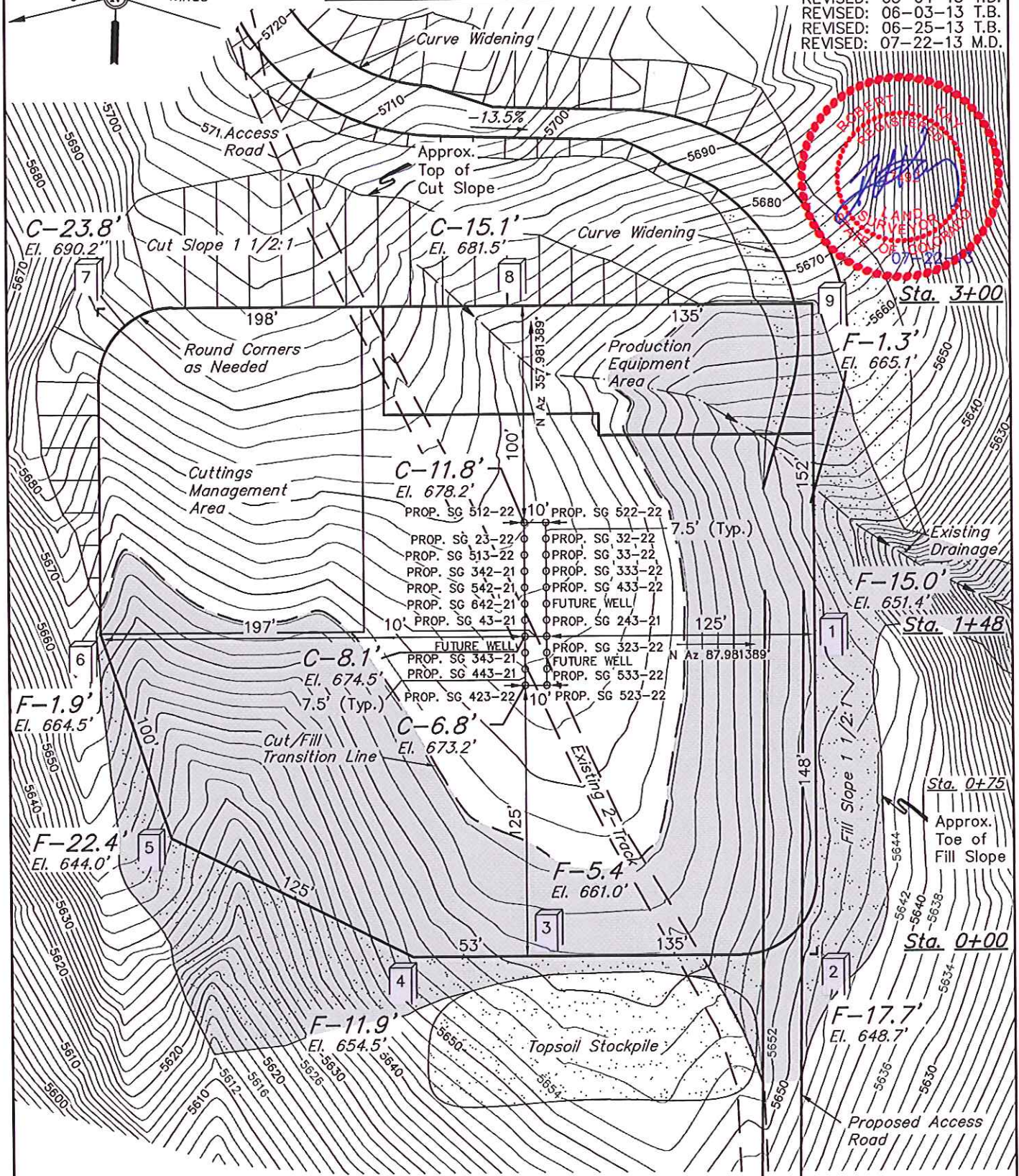


**WPX Energy Rocky Mountain, LLC**  
**PLAT #2\_CONSTRUCTION LAYOUT FOR SG 23-22**  
**SECTION 22, T7S, R96W, 6th. P.M.**

SCALE: 1" = 60'  
 DATE: 04-13-10  
 DRAWN BY: D.B.R.  
 REVISED: 09-06-12 T.B.  
 REVISED: 05-04-13 T.B.  
 REVISED: 06-03-13 T.B.  
 REVISED: 06-25-13 T.B.  
 REVISED: 07-22-13 M.D.



Note: 2' Contour Intervals  
 Elev. Ungraded Ground At Loc. Stake= 5675.0'  
 FINISHED GRADE ELEV. AT LOC. STAKE = 5666.4'

**UINTAH ENGINEERING & LAND SURVEYING**  
 85 So. 200 East \* Vernal, Utah 84078 \* (435) 789-1017



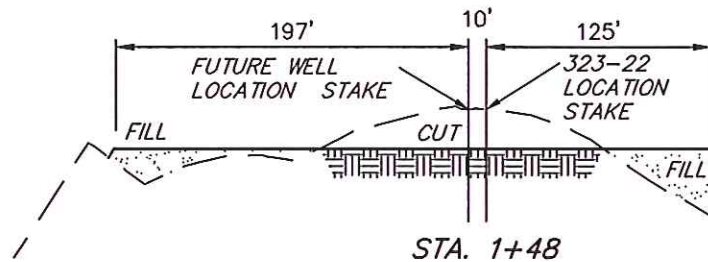
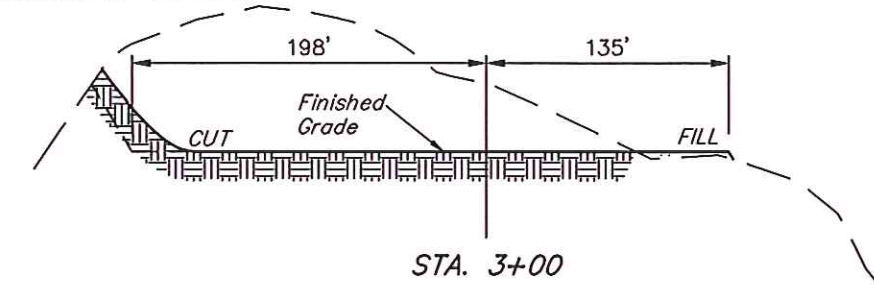
# WPX Energy Rocky Mountain, LLC

PLAT #3\_TYPICAL CROSS SECTION FOR SG 23-22  
SECTION 22, T7S, R96W, 6th P.M.



1" = 40'  
X-Section  
Scale  
1" = 100'

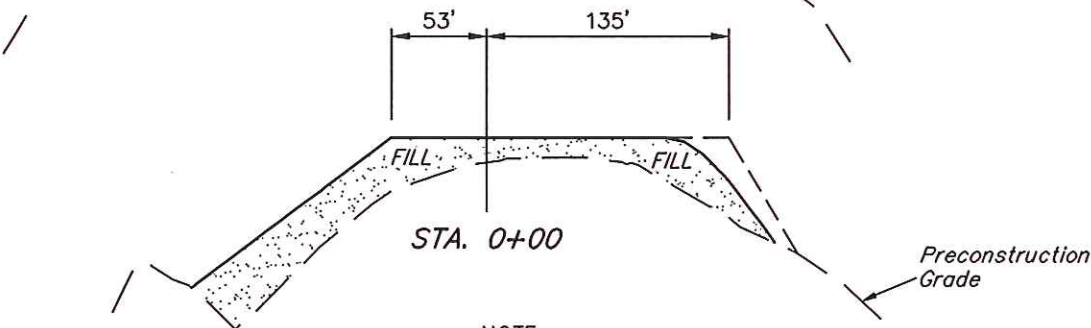
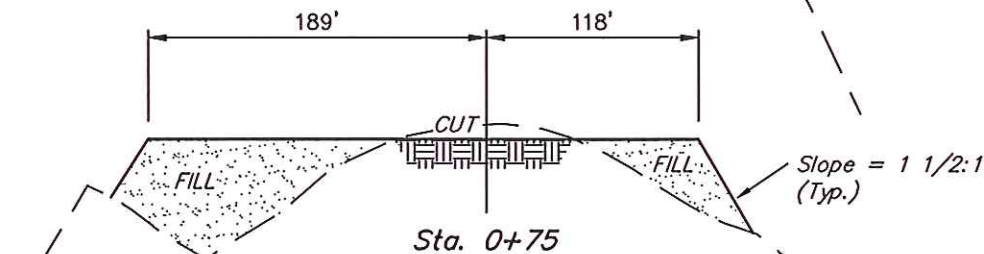
DATE: 04-13-10  
DRAWN BY: D.R.B.  
REVISED: 09-05-12 T.B.  
REVISED: 05-04-13 T.B.  
REVISED: 07-22-13 M.D.



## APPROXIMATE N. ACCESS ROAD YARDAGES

Earthwork Estimates for

FILL = 1,814 Cu. Yds.  
CUT = 1794 Cu. Yds.  
Required material after 10% compaction = 20 Cu. Yds.



NOTE:  
Topsoil should not be Stripped Below Finished Grade on Substructure Area.

\* NOTE:  
FILL QUANTITY INCLUDES 5% FOR COMPACTION

## APPROXIMATE WELL PAD YARDAGES

(6") Topsoil Stripping = 2,560 Cu. Yds.  
Remaining Location = 24,350 Cu. Yds.  
TOTAL CUT = 26,910 CU.YDS.  
FILL = 24,350 CU.YDS.

EXCESS MATERIAL = 2,560 Cu. Yds.  
Topsoil = 2,560 Cu. Yds.  
EXCESS UNBALANCE = 0 Cu. Yds.  
(After Interim Rehabilitation)

UINTAH ENGINEERING & LAND SURVEYING  
85 So. 200 East \* Vernal, Utah 84078 \* (435) 789-1017