

T7S, R96W, 6th. P.M.

SW Cor Sec 15
C.C. 1920 Brass Cap
1.2' High
Lat: 39.430331°
Long: 108.103414°

1982 Brass Cap
0.3' High
Lat: 39.430269°
Long: 108.086911°

WPX Energy Rocky Mountain, LLC

Well location, SG 513-22, located as shown in LOT 8 of Section 22, T7S, R96W, 6th P.M., Garfield County, Colorado.

BASIS OF ELEVATION

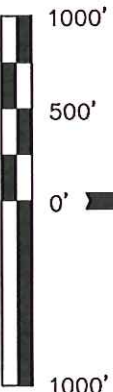
SPOT ELEVATION AT THE NORTHWEST CORNER OF SECTION 30, T7S, R95W, 6th P.M. TAKEN FROM THE FORKED GULCH QUADRANGLE, COLORADO, GARFIELD COUNTY, 7.5 MINUTE SERIES (TOPOGRAPHICAL MAP) PUBLISHED BY THE UNITED STATES DEPARTMENT OF THE INTERIOR, GEOLOGICAL SURVEY. SAID ELEVATION IS MARKED AS BEING 5966 FEET.

BASIS OF BEARINGS

BASIS OF BEARINGS IS A G.P.S. OBSERVATION.

LEGEND:

- = 90° SYMBOL
- = PROPOSED WELL HEAD.
- ▲ = SECTION CORNERS LOCATED.
- △ = SECTION CORNERS RE-ESTABLISHED. (Not Set on Ground.)



CERTIFICATE

THIS IS TO CERTIFY THAT THE ABOVE PLAT WAS PREPARED AND LOCATION AS SHOWN WAS STAKED ON THE GROUND FROM FIELD NOTES OF ACTUAL SURVEYS MADE BY ME OR UNDER MY SUPERVISION AND THAT THE SAME ARE TRUE AND CORRECT TO THE BEST OF MY KNOWLEDGE AND BELIEF.

REGISTERED AND SURVEYOR
REGISTRATION NO. 17492
STATE OF COLORADO
06-06-13

REVISED: 06-06-13 M.D.

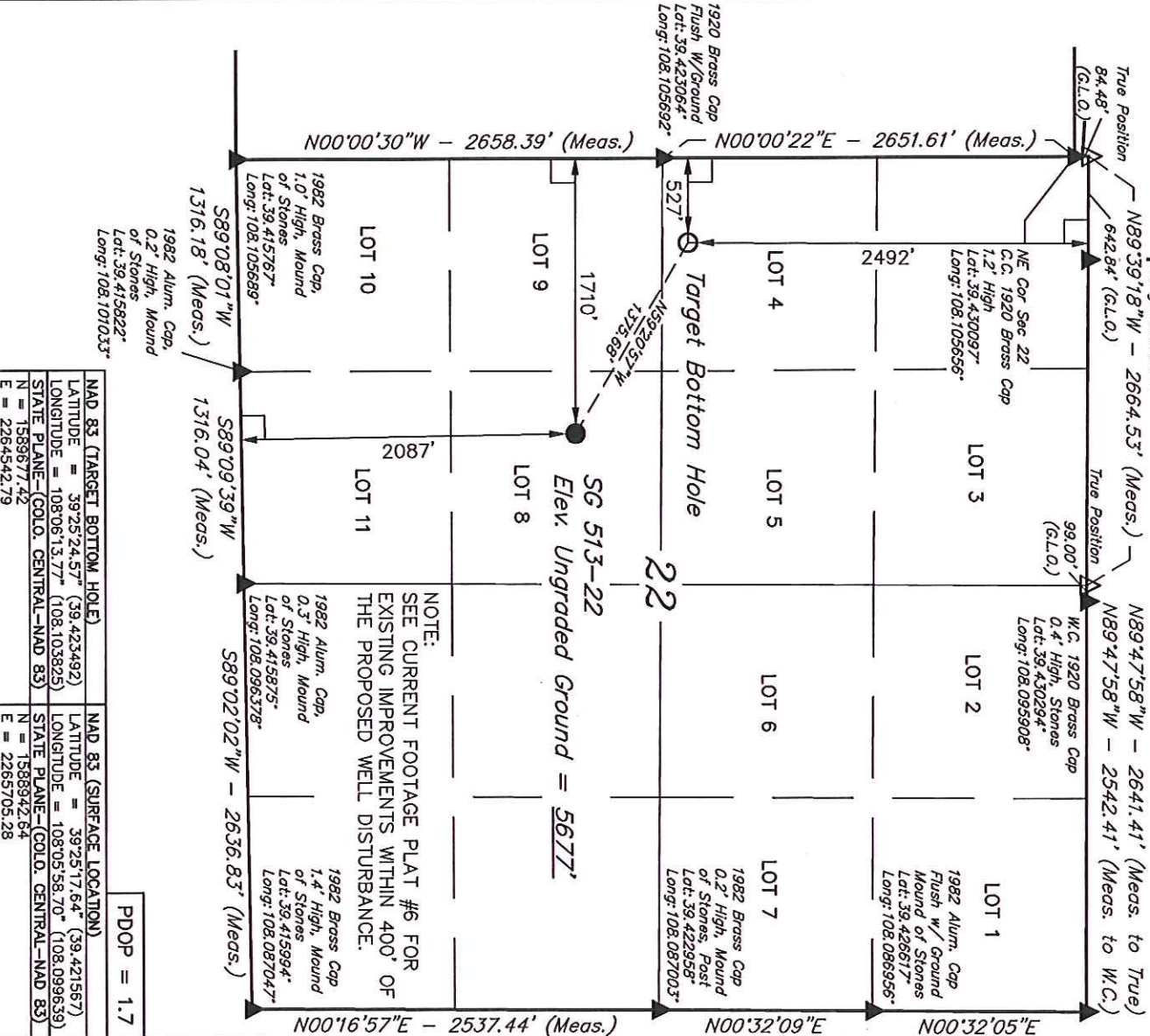
UNTANH ENGINEERING & LAND SURVEYING
85 SOUTH 200 EAST - VERNAL, UTAH 84078
(435) 789-1017

SCALE 1" = 1000'

DATE SURVEYED: 04-24-13 DATE DRAWN: 05-06-13

PARTY B.J. B.B. T.B. REFERENCES G.L.O. PLAT

WEATHER COLD FILE WPX Energy Rocky Mountain, LLC



NOTE:
SEE CURRENT FOOTAGE PLAT #6 FOR
EXISTING IMPROVEMENTS WITHIN 400' OF
THE PROPOSED WELL DISTURBANCE.

NAD 83 (TARGET BOTTOM HOLE)	NAD 83 (SURFACE LOCATION)
LATITUDE = 39°25'24.57" (39.423492)	LATITUDE = 39°25'17.64" (39.421567)
LONGITUDE = 108°06'13.77" (108.103825)	LONGITUDE = 108°05'58.70" (108.098639)
STATE PLANE-(COLO. CENTRAL-NAD 83)	STATE PLANE-(COLO. CENTRAL-NAD 83)
N = 1589677.42	N = 1588942.64
E = 2264542.79	E = 2265705.28

PDOP = 1.7