

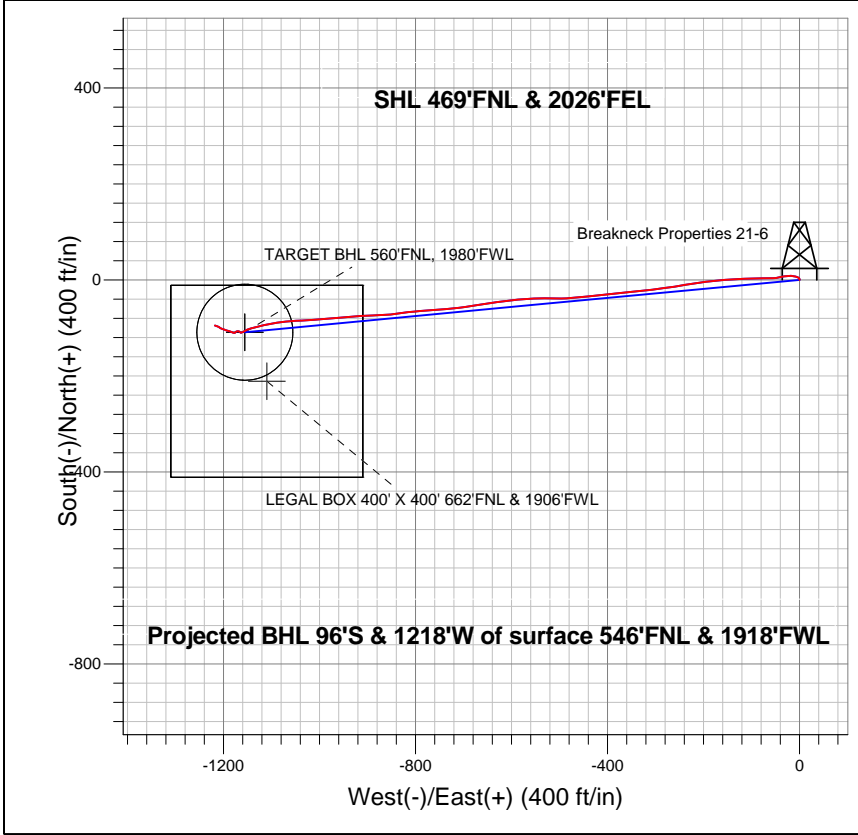
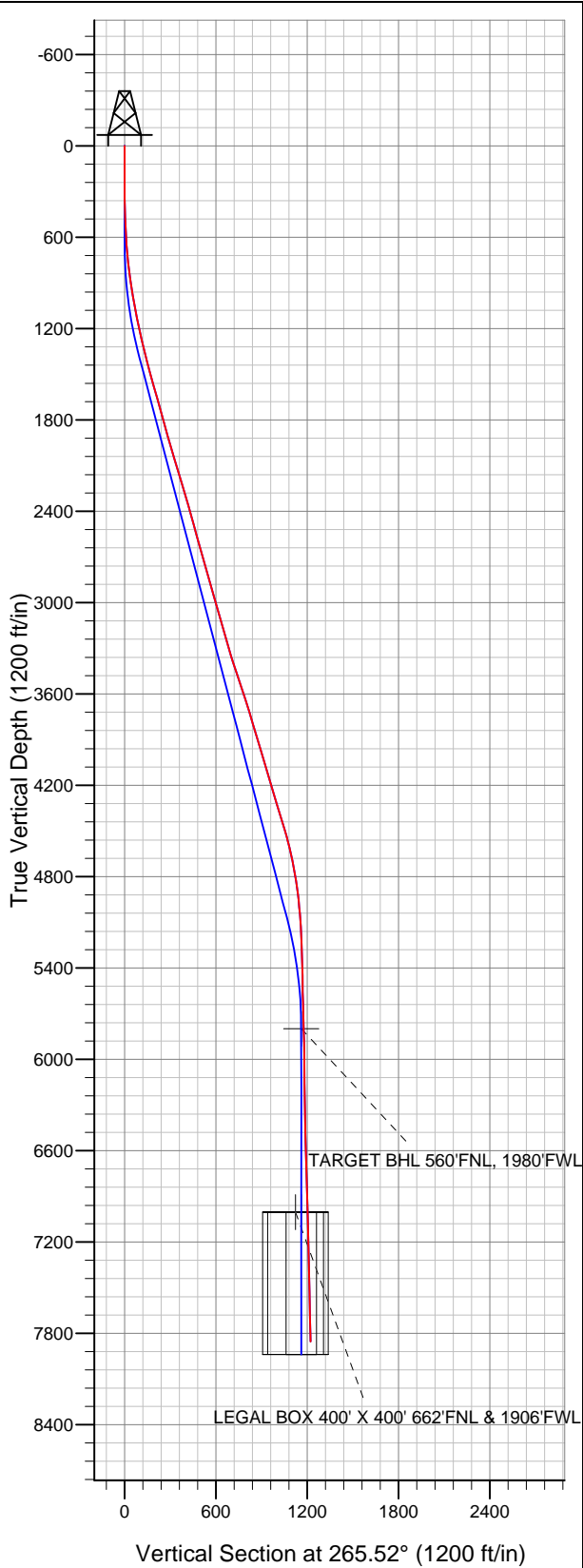


Well Name: Breakneck Properties 21-6

Surface Location: Breakneck Properties 21-6 Pad Sec.6-T3N-R68W
 North American Datum 1983 US State Plane 1983 Colorado Northern Zone
 Ground Elevation: 5082.0

+N/-S	+E/-W	Northing	Easting	Latitude	Longitude	Slot
0.0	0.0	1338138.33	3127300.21	40.260690	-105.043860	
		Original Well Elev	WELL @ 5095.0ft (Original Well Elev)			

EnCana Oil & Gas Weld County CO



LEGEND

- ✕ Breakneck Properties 21-6, Wellbore #1, Plan #3 (4-23-13) V0
- Wellbore #1
- Survey #1

Final Survey Plot

**Projected Final Survey -
 8010'MD & 7855'TVD @ 1222'VS
 1.7deg Inc 276.86 deg AZ**

Project: SEC.6-T3N-R68W
 Site: Breakneck Properties 21-6 Pad Sec.6-T3N-R68W
 Well: Breakneck Properties 21-6
 Plan: Wellbore #1



EnCana Oil & Gas Weld County CO

SEC.6-T3N-R68W

Breakneck Properties 21-6 Pad Sec.6-T3N-R68W

Breakneck Properties 21-6

Wellbore #1

Survey: Survey #1

Standard Survey Report

29 April, 2013

Company:	EnCana Oil & Gas Weld County CO	Local Co-ordinate Reference:	Well Breakneck Properties 21-6
Project:	SEC.6-T3N-R68W	TVD Reference:	WELL @ 5095.0ft (Original Well Elev)
Site:	Breakneck Properties 21-6 Pad Sec.6-T3N-R68W	MD Reference:	WELL @ 5095.0ft (Original Well Elev)
Well:	Breakneck Properties 21-6	North Reference:	True
Wellbore:	Wellbore #1	Survey Calculation Method:	Minimum Curvature
Design:	Wellbore #1	Database:	Landmark

Project	SEC.6-T3N-R68W, Weld County, Colorado		
Map System:	US State Plane 1983	System Datum:	Mean Sea Level
Geo Datum:	North American Datum 1983		Using Well Reference Point
Map Zone:	Colorado Northern Zone		Using geodetic scale factor

Site	Breakneck Properties 21-6 Pad Sec.6-T3N-R68W				
Site Position:		Northing:	1,338,138.33 ft	Latitude:	40.260690
From:	Lat/Long	Easting:	3,127,300.21 ft	Longitude:	-105.043860
Position Uncertainty:	0.0 ft	Slot Radius:	"	Grid Convergence:	0.29 °

Well	Breakneck Properties 21-6					
Well Position	+N/-S	0.0 ft	Northing:	1,338,138.33 ft	Latitude:	40.260690
	+E/-W	0.0 ft	Easting:	3,127,300.21 ft	Longitude:	-105.043860
Position Uncertainty		0.0 ft	Wellhead Elevation:	ft	Ground Level:	5,082.0 ft

Wellbore	Wellbore #1				
Magnetics	Model Name	Sample Date	Declination (°)	Dip Angle (°)	Field Strength (nT)
	IGRF2010	4/23/2013	8.75	66.83	52,831

Design	Wellbore #1				
Audit Notes:					
Version:	1.0	Phase:	ACTUAL	Tie On Depth:	0.0
Vertical Section:		Depth From (TVD) (ft)	+N/-S (ft)	+E/-W (ft)	Direction (°)
		0.0	0.0	0.0	265.52

Survey Program	Date	4/29/2013			
From (ft)	To (ft)	Survey (Wellbore)	Tool Name	Description	
75.0	8,010.0	Survey #1 (Wellbore #1)	MWD	MWD - Standard	

Survey										
Measured Depth (ft)	Inclination (°)	Azimuth (°)	Vertical Depth (ft)	+N/-S (ft)	+E/-W (ft)	Vertical Section (ft)	Dogleg Rate (°/100ft)	Build Rate (°/100ft)	Turn Rate (°/100ft)	
0.0	0.00	0.00	0.0	0.0	0.0	0.0	0.00	0.00	0.00	
75.0	0.30	31.80	75.0	0.2	0.1	-0.1	0.40	0.40	0.00	
165.0	0.40	1.00	165.0	0.7	0.2	-0.3	0.23	0.11	-34.22	
255.0	0.80	339.10	255.0	1.6	0.0	-0.1	0.50	0.44	-24.33	
346.0	1.20	334.00	346.0	3.0	-0.6	0.4	0.45	0.44	-5.60	
436.0	1.90	292.00	435.9	4.4	-2.4	2.1	1.43	0.78	-46.67	
527.0	2.70	293.40	526.9	5.9	-5.8	5.3	0.88	0.88	1.54	
618.0	3.70	282.10	617.7	7.3	-10.6	10.0	1.29	1.10	-12.42	
709.0	5.40	272.80	708.4	8.1	-17.8	17.1	2.03	1.87	-10.22	
801.0	6.90	262.40	799.9	7.6	-27.6	26.9	2.02	1.63	-11.30	
831.0	7.50	261.90	829.7	7.1	-31.3	30.7	2.01	2.00	-1.67	
912.0	8.90	258.20	909.8	5.1	-42.7	42.1	1.85	1.73	-4.57	

Company:	EnCana Oil & Gas Weld County CO	Local Co-ordinate Reference:	Well Breakneck Properties 21-6
Project:	SEC.6-T3N-R68W	TVD Reference:	WELL @ 5095.0ft (Original Well Elev)
Site:	Breakneck Properties 21-6 Pad Sec.6-T3N-R68W	MD Reference:	WELL @ 5095.0ft (Original Well Elev)
Well:	Breakneck Properties 21-6	North Reference:	True
Wellbore:	Wellbore #1	Survey Calculation Method:	Minimum Curvature
Design:	Wellbore #1	Database:	Landmark

Survey										
Measured Depth (ft)	Inclination (°)	Azimuth (°)	Vertical Depth (ft)	+N/-S (ft)	+E/-W (ft)	Vertical Section (ft)	Dogleg Rate (°/100ft)	Build Rate (°/100ft)	Turn Rate (°/100ft)	
997.0	9.40	266.50	993.8	3.3	-56.0	55.6	1.66	0.59	9.76	
1,083.0	10.10	270.70	1,078.5	3.0	-70.6	70.1	1.16	0.81	4.88	
1,169.0	11.80	269.50	1,163.0	3.0	-86.9	86.4	1.99	1.98	-1.40	
1,255.0	13.00	267.40	1,247.0	2.5	-105.4	104.9	1.49	1.40	-2.44	
1,340.0	13.80	266.70	1,329.6	1.5	-125.1	124.6	0.96	0.94	-0.82	
1,426.0	14.90	265.90	1,413.0	0.1	-146.3	145.9	1.30	1.28	-0.93	
1,512.0	15.30	266.30	1,496.0	-1.4	-168.7	168.3	0.48	0.47	0.47	
1,597.0	15.70	262.40	1,577.9	-3.7	-191.3	191.0	1.31	0.47	-4.59	
1,683.0	15.70	262.30	1,660.7	-6.8	-214.3	214.2	0.03	0.00	-0.12	
1,769.0	15.60	260.30	1,743.5	-10.3	-237.3	237.3	0.64	-0.12	-2.33	
1,855.0	15.70	261.00	1,826.3	-14.1	-260.1	260.5	0.25	0.12	0.81	
1,940.0	16.00	261.60	1,908.1	-17.6	-283.1	283.6	0.40	0.35	0.71	
2,026.0	15.80	263.10	1,990.8	-20.7	-306.4	307.1	0.53	-0.23	1.74	
2,112.0	16.50	264.90	2,073.4	-23.2	-330.2	331.0	1.00	0.81	2.09	
2,198.0	17.10	263.70	2,155.7	-25.7	-355.0	355.9	0.81	0.70	-1.40	
2,283.0	17.10	264.90	2,237.0	-28.2	-379.8	380.9	0.42	0.00	1.41	
2,369.0	16.00	263.70	2,319.4	-30.6	-404.2	405.4	1.34	-1.28	-1.40	
2,455.0	16.10	262.80	2,402.1	-33.4	-427.8	429.1	0.31	0.12	-1.05	
2,540.0	15.10	264.20	2,483.9	-36.0	-450.5	452.0	1.26	-1.18	1.65	
2,626.0	15.90	265.80	2,566.8	-38.0	-473.4	474.9	1.05	0.93	1.86	
2,712.0	15.40	270.00	2,649.6	-38.8	-496.6	498.1	1.44	-0.58	4.88	
2,798.0	16.20	270.70	2,732.4	-38.7	-520.0	521.4	0.96	0.93	0.81	
2,883.0	16.30	266.30	2,814.0	-39.3	-543.8	545.2	1.45	0.12	-5.18	
2,969.0	16.10	268.90	2,896.5	-40.3	-567.7	569.1	0.87	-0.23	3.02	
3,055.0	15.90	265.40	2,979.2	-41.5	-591.4	592.8	1.15	-0.23	-4.07	
3,141.0	15.20	262.10	3,062.1	-44.0	-614.3	615.9	1.31	-0.81	-3.84	
3,226.0	15.70	261.60	3,144.0	-47.2	-636.7	638.5	0.61	0.59	-0.59	
3,312.0	15.90	258.90	3,226.8	-51.2	-659.8	661.8	0.89	0.23	-3.14	
3,398.0	16.90	262.30	3,309.3	-55.1	-683.7	686.0	1.61	1.16	3.95	
3,484.0	18.00	263.70	3,391.3	-58.2	-709.3	711.7	1.37	1.28	1.63	
3,569.0	18.60	265.10	3,472.0	-60.8	-735.9	738.4	0.88	0.71	1.65	
3,655.0	18.60	265.80	3,553.5	-63.0	-763.2	765.8	0.26	0.00	0.81	
3,741.0	17.80	265.80	3,635.2	-65.0	-790.0	792.7	0.93	-0.93	0.00	
3,826.0	17.00	263.30	3,716.3	-67.4	-815.3	818.1	1.29	-0.94	-2.94	
3,912.0	16.30	261.90	3,798.7	-70.5	-839.8	842.7	0.94	-0.81	-1.63	
3,998.0	16.90	266.70	3,881.1	-73.0	-864.2	867.3	1.74	0.70	5.58	
4,084.0	16.80	268.10	3,963.4	-74.1	-889.1	892.2	0.49	-0.12	1.63	
4,169.0	16.80	265.40	4,044.8	-75.5	-913.6	916.7	0.92	0.00	-3.18	
4,255.0	16.20	265.10	4,127.3	-77.5	-938.0	941.1	0.70	-0.70	-0.35	
4,341.0	16.50	266.10	4,209.8	-79.4	-962.1	965.4	0.48	0.35	1.16	
4,427.0	17.10	264.90	4,292.1	-81.3	-986.9	990.2	0.81	0.70	-1.40	
4,512.0	17.10	265.80	4,373.4	-83.4	-1,011.8	1,015.2	0.31	0.00	1.06	
4,598.0	16.80	267.40	4,455.6	-84.8	-1,036.8	1,040.3	0.64	-0.35	1.86	
4,684.0	15.70	265.40	4,538.2	-86.3	-1,060.8	1,064.3	1.43	-1.28	-2.33	
4,770.0	13.30	262.30	4,621.4	-88.6	-1,082.2	1,085.8	2.93	-2.79	-3.60	
4,855.0	11.50	260.00	4,704.5	-91.4	-1,100.3	1,104.0	2.20	-2.12	-2.71	
4,941.0	9.60	255.90	4,789.0	-94.6	-1,115.7	1,119.6	2.37	-2.21	-4.77	
5,027.0	7.90	257.20	4,874.0	-97.7	-1,128.4	1,132.6	1.99	-1.98	1.51	
5,112.0	6.40	255.60	4,958.3	-100.1	-1,138.7	1,143.0	1.78	-1.76	-1.88	
5,198.0	4.90	252.80	5,043.9	-102.4	-1,146.8	1,151.3	1.77	-1.74	-3.26	
5,284.0	4.10	240.10	5,129.7	-105.0	-1,153.0	1,157.7	1.48	-0.93	-14.77	
5,370.0	1.80	231.80	5,215.5	-107.4	-1,156.7	1,161.6	2.71	-2.67	-9.65	
5,455.0	2.00	251.40	5,300.5	-108.7	-1,159.2	1,164.1	0.80	0.24	23.06	

Company:	EnCana Oil & Gas Weld County CO	Local Co-ordinate Reference:	Well Breakneck Properties 21-6
Project:	SEC.6-T3N-R68W	TVD Reference:	WELL @ 5095.0ft (Original Well Elev)
Site:	Breakneck Properties 21-6 Pad Sec.6-T3N-R68W	MD Reference:	WELL @ 5095.0ft (Original Well Elev)
Well:	Breakneck Properties 21-6	North Reference:	True
Wellbore:	Wellbore #1	Survey Calculation Method:	Minimum Curvature
Design:	Wellbore #1	Database:	Landmark

Survey										
Measured Depth (ft)	Inclination (°)	Azimuth (°)	Vertical Depth (ft)	+N/-S (ft)	+E/-W (ft)	Vertical Section (ft)	Dogleg Rate (°/100ft)	Build Rate (°/100ft)	Turn Rate (°/100ft)	
5,541.0	2.30	245.20	5,386.4	-109.9	-1,162.2	1,167.2	0.44	0.35	-7.21	
5,627.0	0.80	316.40	5,472.4	-110.2	-1,164.1	1,169.2	2.53	-1.74	82.79	
5,798.0	1.90	300.80	5,643.3	-107.9	-1,167.4	1,172.3	0.67	0.64	-9.12	
5,954.2	2.01	247.31	5,799.5	-107.6	-1,172.2	1,177.0	1.13	0.07	-34.24	
TARGET BHL 560'FNL, 1980'FWL										
5,970.0	2.10	243.10	5,815.3	-107.8	-1,172.7	1,177.5	1.13	0.60	-26.70	
6,141.0	0.40	176.70	5,986.2	-109.9	-1,175.4	1,180.4	1.15	-0.99	-38.83	
6,313.0	0.80	261.60	6,158.2	-110.6	-1,176.6	1,181.6	0.50	0.23	49.36	
6,484.0	1.30	291.80	6,329.2	-110.1	-1,179.6	1,184.6	0.43	0.29	17.66	
6,656.0	1.50	290.90	6,501.1	-108.6	-1,183.5	1,188.3	0.12	0.12	-0.52	
6,827.0	1.70	284.80	6,672.1	-107.1	-1,188.0	1,192.8	0.15	0.12	-3.57	
6,999.0	1.90	288.10	6,844.0	-105.6	-1,193.2	1,197.8	0.13	0.12	1.92	
7,156.4	1.72	289.38	7,001.3	-104.0	-1,197.9	1,202.4	0.12	-0.12	0.81	
LEGAL BOX 400' X 400' 662'FNL & 1906'FWL										
7,158.9	1.71	289.40	7,003.8	-104.0	-1,198.0	1,202.4	0.12	-0.12	0.90	
TARGET CIRCLE 560'FNL & 1980'FWL										
7,170.0	1.70	289.50	7,014.9	-103.9	-1,198.3	1,202.7	0.12	-0.12	0.91	
7,341.0	1.40	290.60	7,185.8	-102.3	-1,202.6	1,206.9	0.18	-0.18	0.64	
7,513.0	1.40	297.10	7,357.8	-100.6	-1,206.5	1,210.6	0.09	0.00	3.78	
7,684.0	1.30	310.20	7,528.7	-98.4	-1,209.8	1,213.8	0.19	-0.06	7.66	
7,856.0	1.60	286.70	7,700.7	-96.4	-1,213.6	1,217.4	0.38	0.17	-13.66	
7,964.0	1.70	279.80	7,808.6	-95.7	-1,216.6	1,220.4	0.21	0.09	-6.39	
8,010.0	1.74	276.86	7,854.6	-95.5	-1,218.0	1,221.7	0.21	0.09	-6.39	

Checked By: _____ Approved By: _____ Date: _____