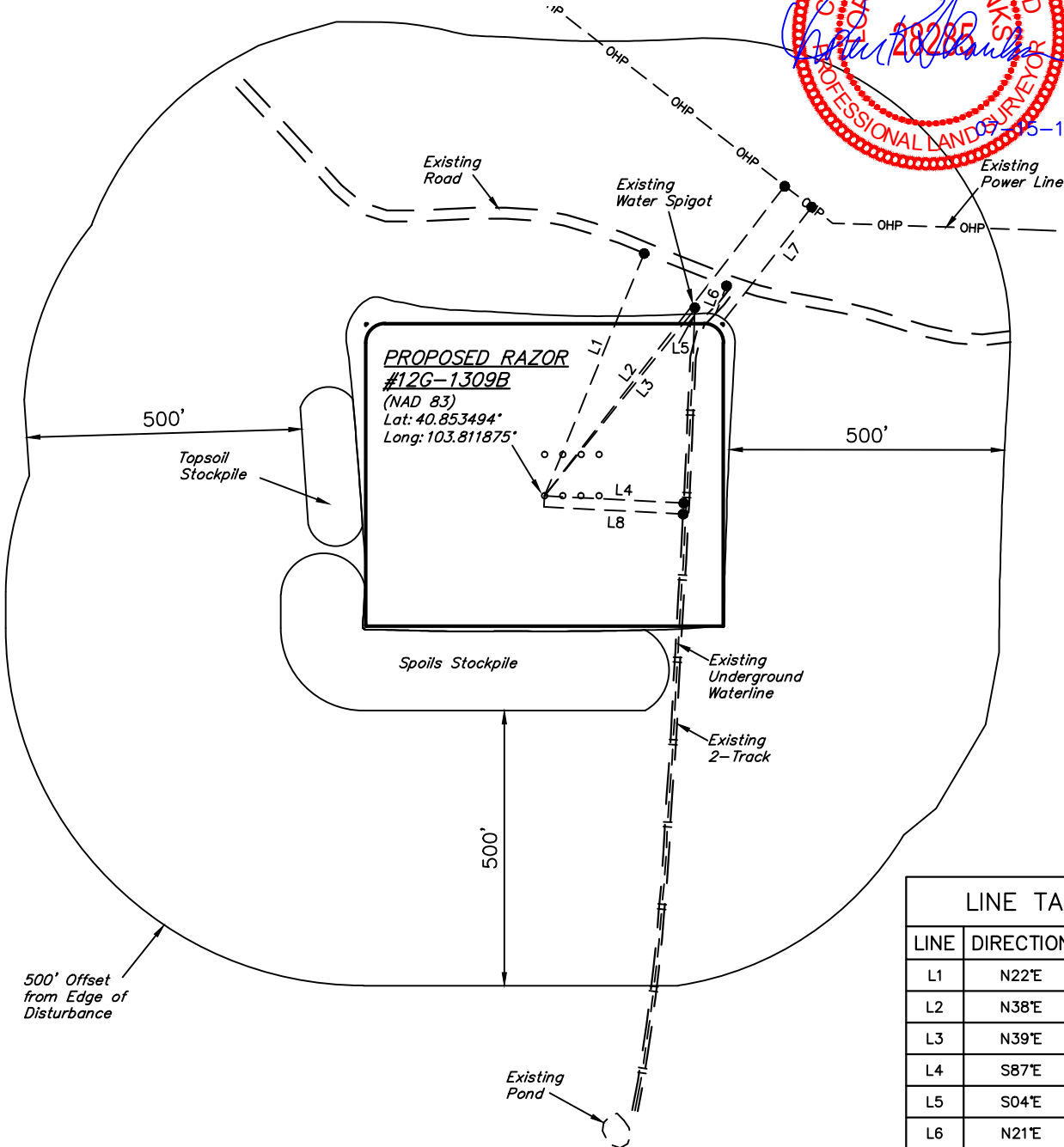
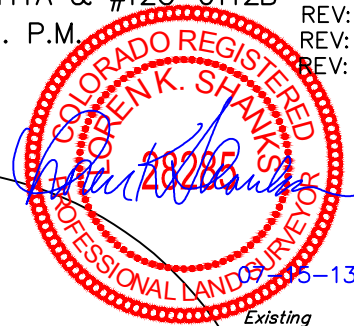


WHITING OIL & GAS CORP.

LOCATION DRAWING FOR

RAZOR FEDERAL #12G-1309A, #12G-1310B, #12G-1311A, #12G-1312B, DATE: 05-11-12
 RAZOR #12G-0109A, #12G-0110B, #12G-0111A & #12G-0112B DRAWN BY: S.R.L.
 SECTION 12, T10N, R58W, 6th. P.M. REV: 05-18-12 H.K.W.
 SW 1/4 NE 1/4 REV: 05-08-13 H.K.W.
 REV: 07-09-13 B.D.H.

SCALE: 1" = 300'



LINE TABLE		
LINE	DIRECTION	LENGTH
L1	N22°E	477'
L2	N38°E	713'
L3	N39°E	435'
L4	S87°E	253'
L5	S04°E	8'
L6	N21°E	57'
L7	N38°E	259'
L7	S87°E	258'