

WHITING OIL & GAS CORP.

LOCATION DRAWING FOR

RAZOR FEDERAL #12F-1301A, #12F-1302B, #12F-1303A,
12F-1304B, #12F-1305A, #12F-1306B, #12F-1307A, #12F-1308B,
RAZOR #12F-0101A, #12F-0102B, #12F-0103A, #12F-0104B,
#12F-0105A, #12F-0106B, #12F-0107A, & #12F-0108B

SECTION 12, T10N, R58W, 6th P.M.

SE 1/4 NW 1/4

SCALE: 1" = 300'

DATE: 05-22-13

DRAWN BY: A.D.

REV: 06-03-13 B.D.H.

REV: 06-25-13 H.K.W.

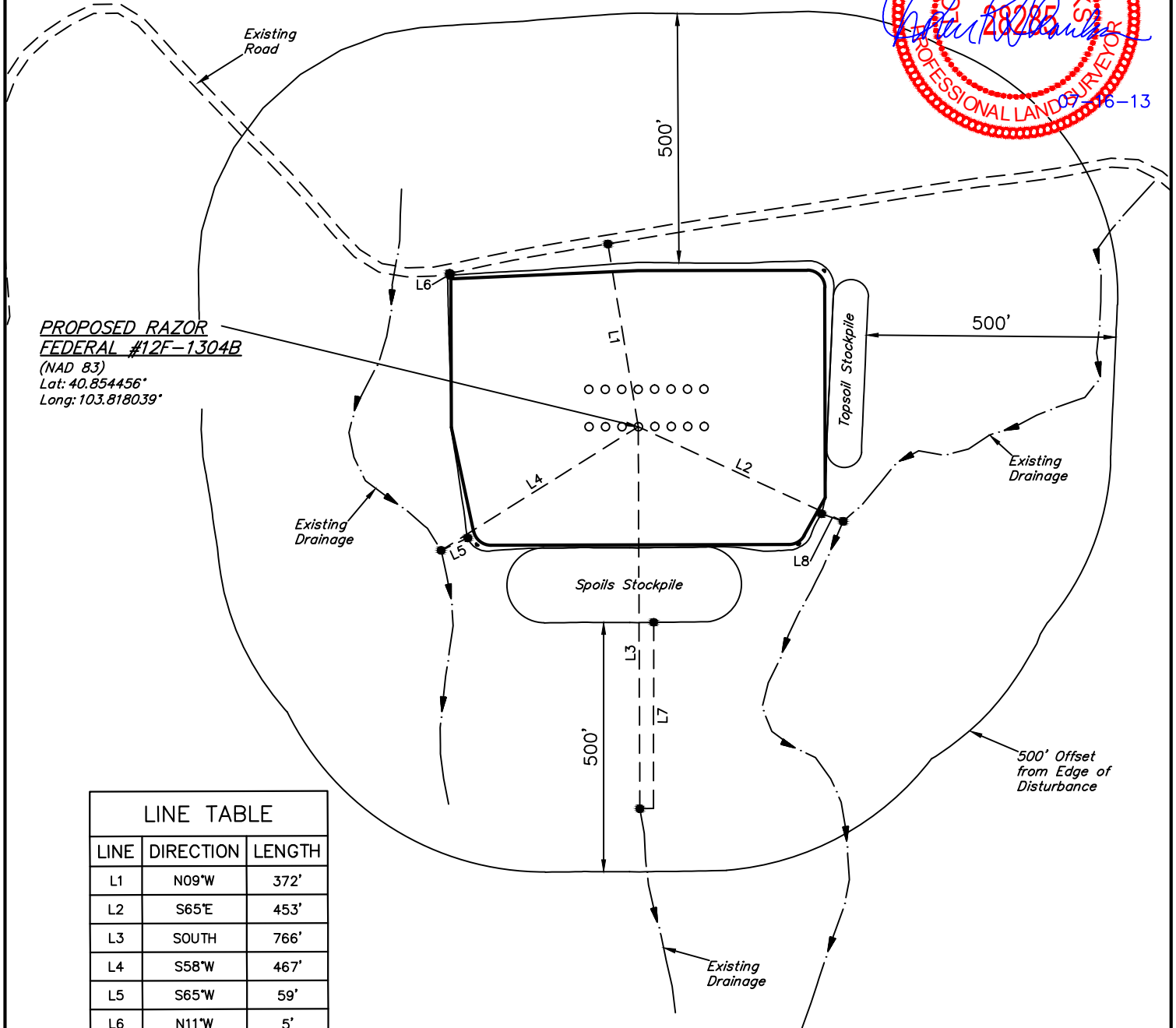
REV: 07-02-13 B.D.H.



**PROPOSED RAZOR
FEDERAL #12F-1304B**

(NAD 83)
Lat: 40.854456°
Long: 103.818039°

LINE TABLE		
LINE	DIRECTION	LENGTH
L1	N09°W	372'
L2	S65°E	453'
L3	SOUTH	766'
L4	S58°W	467'
L5	S65°W	59'
L6	N11°W	5'
L7	SOUTH	373'
L8	S71°E	46'



UINTAH ENGINEERING & LAND SURVEYING

85 So. 200 East * Vernal, Utah 84078 * (435) 789-1017