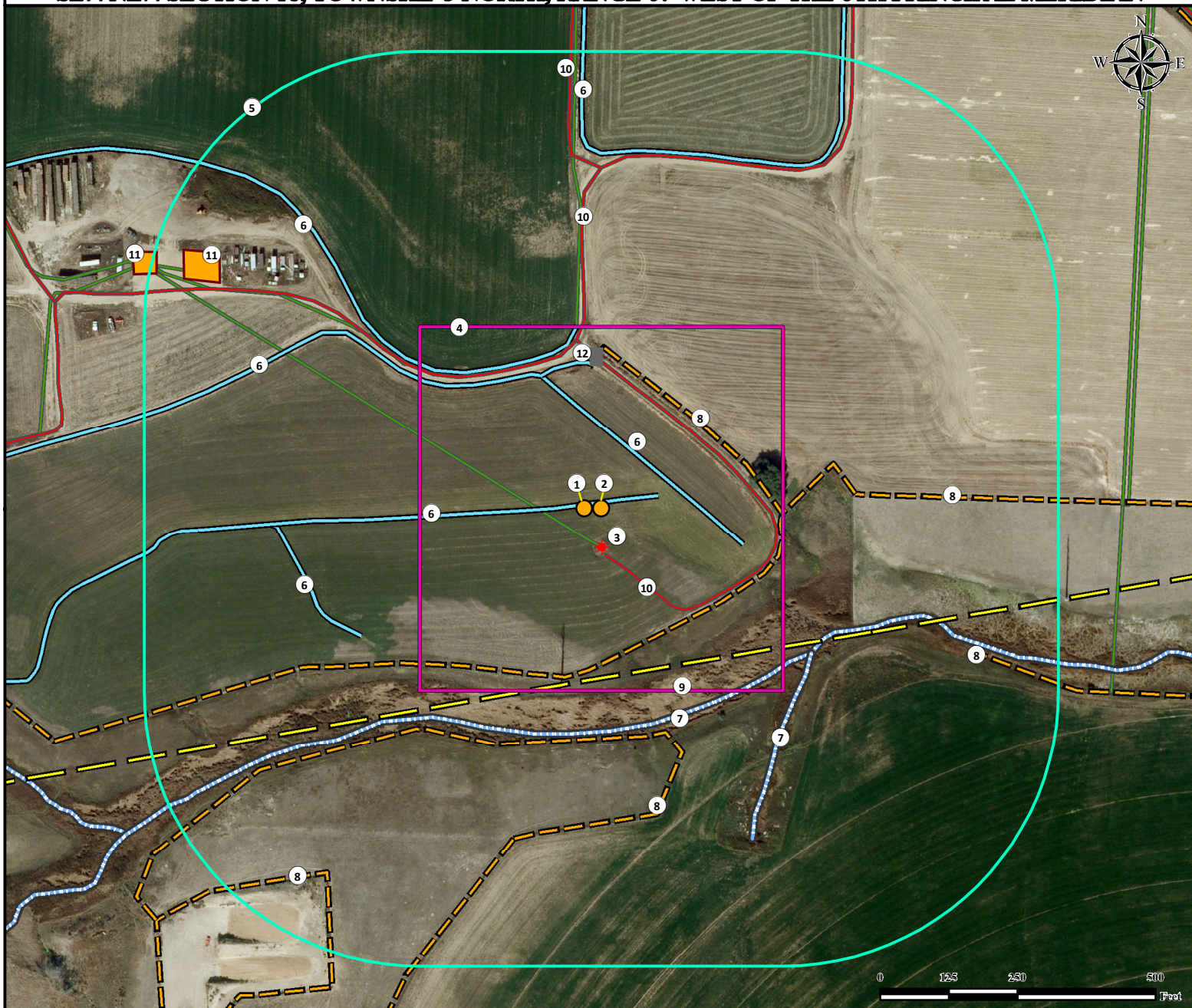


Location Drawing

ELLIOTT 32N-18HZ

Horizontal Multi Well Pad

SE¼ NE¼ SECTION 18, TOWNSHIP 3 NORTH, RANGE 67 WEST OF THE 6TH PRINCIPAL MERIDIAN



- | | | |
|--|--|---|
| 1. Proposed Well ELLIOTT 5C-18HZ. 2. Proposed Well ELLIOTT 32N-18HZ. 3. Existing Well HSR-MARGARET 8-18 is ±70' S. 4. Operational Disturbance Area. 5. 500' Radius. | 6. Ditches are ±13' N, ±116' NE, ±266' NW, ±296' NW, ±492' SW, and ±645' N. 7. Intermittent Streams are ±400' S and ±462' SE. 8. Fences are ±234' NE, ±328' E, ±417' S, ±718' SE and ±827' SW. 9. Powerline is ±303' S. | 10. Private Roads are ±85' S, ±288' NW, and ±620' N. 11. Existing Facilities are ±805' NW and ±913' NW. 12. Cattle Guard is ±276' N. |
|--|--|---|

Legend

- | | | | |
|--|---|---|---|
| ● Proposed Well ★ Existing Well ■ Cattle Guard | □ Disturbance Area 500' Radius Facility Enclosure | - - - Fence — Ditch - - - Intermittent Stream | — Private Road — Powerline — Flowline |
|--|---|---|---|

Reference Location

** All measurements are made from
 Reference Well ELLIOTT 32N-18HZ **
Lat: 40.227594° Long: -104.924895° (NAD83)
Elevation: 4822 Feet

Surface Use: Irrigated Crop

Nearest Building Unit: >1000' NE

Prepared for:

KERR-MCGEE OIL & GAS ONSHORE LP



Use our resources to find yours!
www.petro-fs.com
(303) 928-7128

Field Date: 05/31/2013
 Drafting Date: 08/27/2013
 Drafter: JLF
 Revision: 2

Data Sources:

- Aerial courtesy of Anadarko
 Petroleum Corporation (2010)