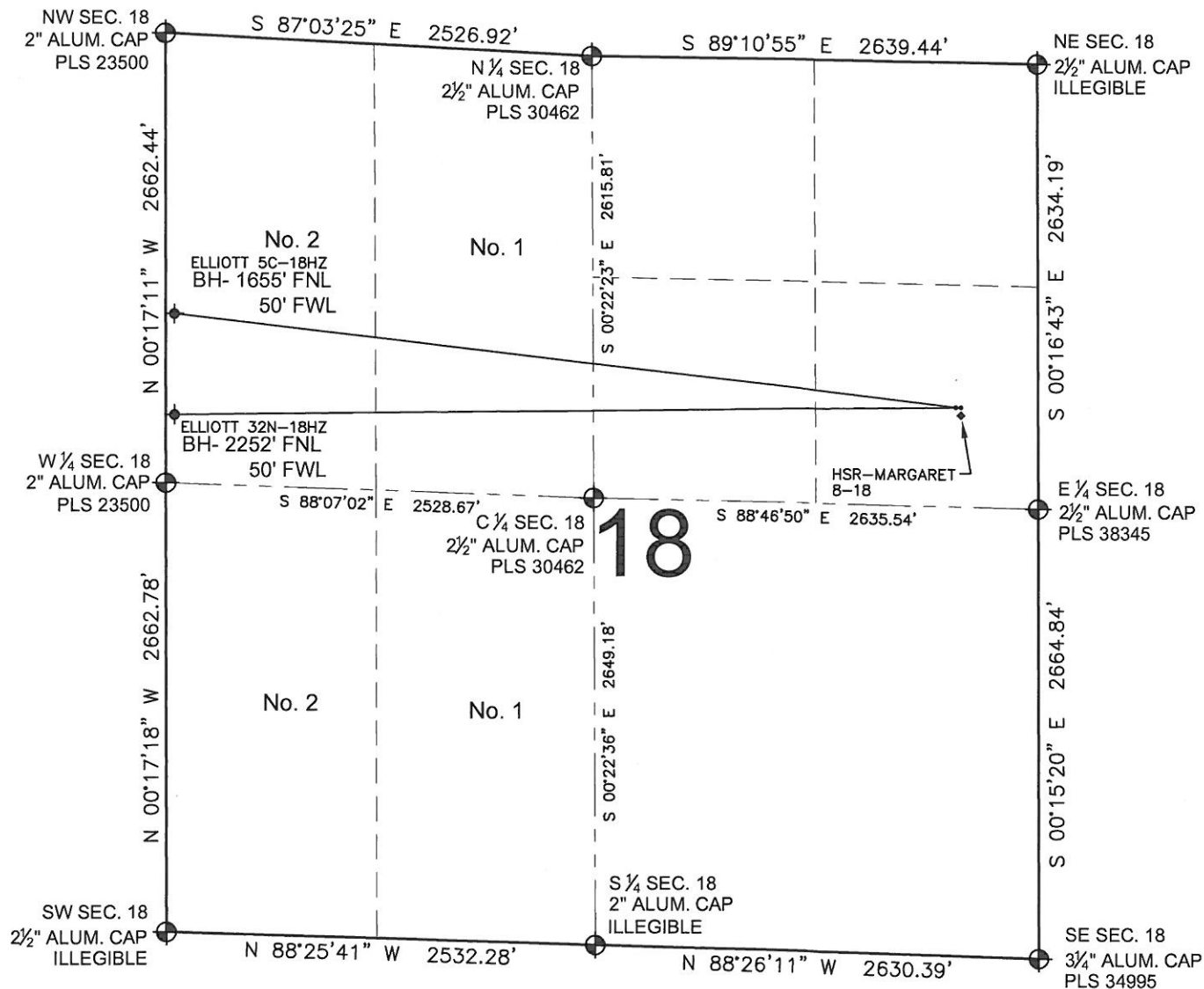


# ELLIOTT 32N-18HZ MULTI-WELL PLAN

SECTION 18, TOWNSHIP 3 NORTH, RANGE 67 WEST, 6TH P.M.



## NOTES:

ELLIOTT 5C-18HZ TO BE AT 2040' FNL, 487' FEL.  
BOTTOM HOLE AT 1655' FNL & 50' FWL.  
ELLIOTT 32N-18HZ TO BE AT 2041' FNL, 457' FEL.  
BOTTOM HOLE AT 2252' FNL & 50' FWL.  
HSR-MARGARET 8-18 IS 2111' FNL, 457' FEL.

## LEGEND

⊕ = EXISTING MONUMENT    ⊕ = BOTTOM HOLE    BH= BOTTOM HOLE  
● = PROPOSED WELL    ⊕ = EXISTING WELL

PREPARED BY:



KERR-MCGEE OIL & GAS ONSHORE LP

FIELD DATE:  
05-31-13

DRAWING DATE:  
07-08-13

SURFACE LOCATION:

SE 1/4 NE 1/4, SEC. 18, T3N, R67W, 6TH P.M.  
WELD COUNTY, COLORADO

