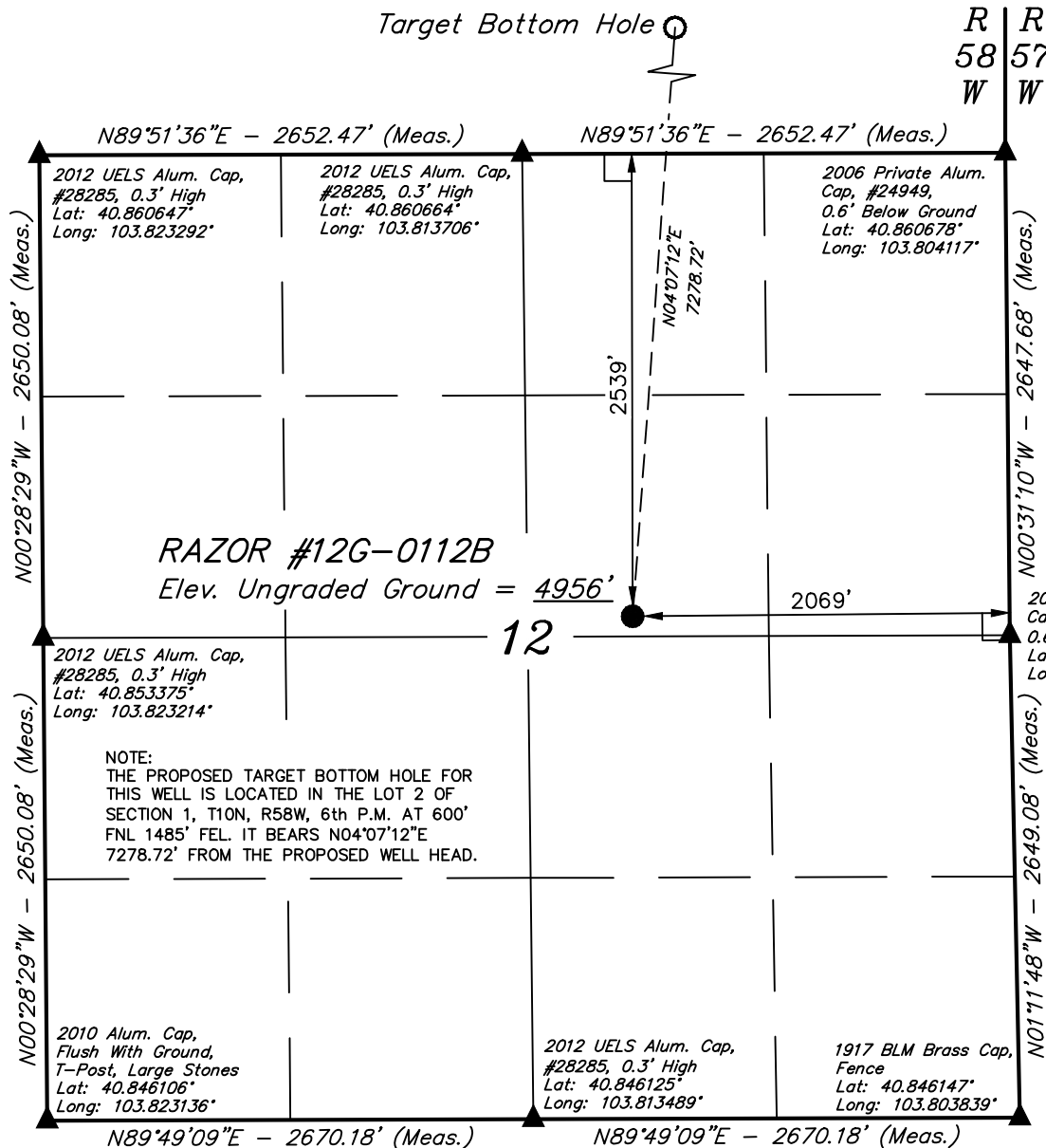


T10N, R58W, 6th P.M.

Target Bottom Hole



WHITING OIL & GAS CORP.

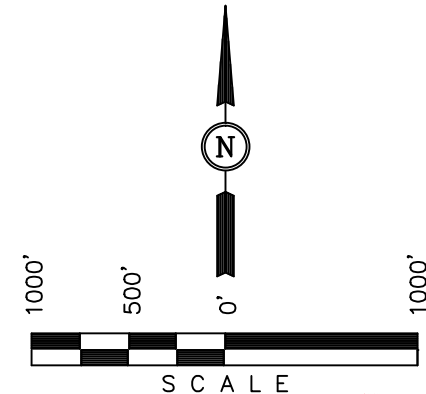
Well location, RAZOR #12G-0112B (SURFACE LOCATION), located as shown in the SW 1/4 NE 1/4 of Section 12, T10N, R58W, 6th P.M., Weld County, Colorado.

BASIS OF ELEVATION

SPOT ELEVATION LOCATED AT THE NORTHEAST CORNER OF SECTION 15, T9N, R58W, 6th P.M. TAKEN FROM THE GATEHOOK SPRING, QUADRANGLE, COLORADO, WELD COUNTY, 7.5 MINUTE QUAD (TOPOGRAPHIC MAP) PUBLISHED BY THE UNITED STATES DEPARTMENT OF THE INTERIOR, GEOLOGICAL SURVEY. SAID ELEVATION IS MARKED AS BEING 4679 FEET.

BASIS OF BEARINGS

BASIS OF BEARINGS IS A G.P.S. OBSERVATION.



CERTIFICATE

THIS IS TO CERTIFY THAT THE ABOVE PLAT WAS PREPARED FROM FIELD NOTES OF ACTUAL SURVEYS MADE BY ME OR UNDER MY SUPERVISION AND THAT THE SAME ARE TRUE AND CORRECT TO THE BEST OF MY KNOWLEDGE AND BELIEF.

REGISTERED LAND SURVEYOR
REGISTRATION NO. 28285
STATE OF COLORADO

REV: 07-09-13 B.D.H.

UINTAH ENGINEERING & LAND SURVEYING
85 SOUTH 200 EAST - VERNAL, UTAH 84078
(435) 789-1017

LEGEND:

- └─┘ = 90° SYMBOL
- = PROPOSED WELL HEAD.
- ▲ = SECTION CORNERS LOCATED.

PDOP = 1.3

NAD 83 (SURFACE LOCATION)
LATITUDE = 40°51'13.32" (40.853700)
LONGITUDE = 103°48'41.46" (103.811517)
NAD 27 (SURFACE LOCATION)
LATITUDE = 40°51'13.38" (40.853717)
LONGITUDE = 103°48'39.65" (103.811014)

SCALE 1" = 1000'	DATE SURVEYED: 05-02-13	DATE DRAWN: 05-07-13
PARTY J.H. C.M. H.K.W.	REFERENCES G.L.O. PLAT	
WEATHER COOL	FILE WHITING OIL & GAS CORP.	

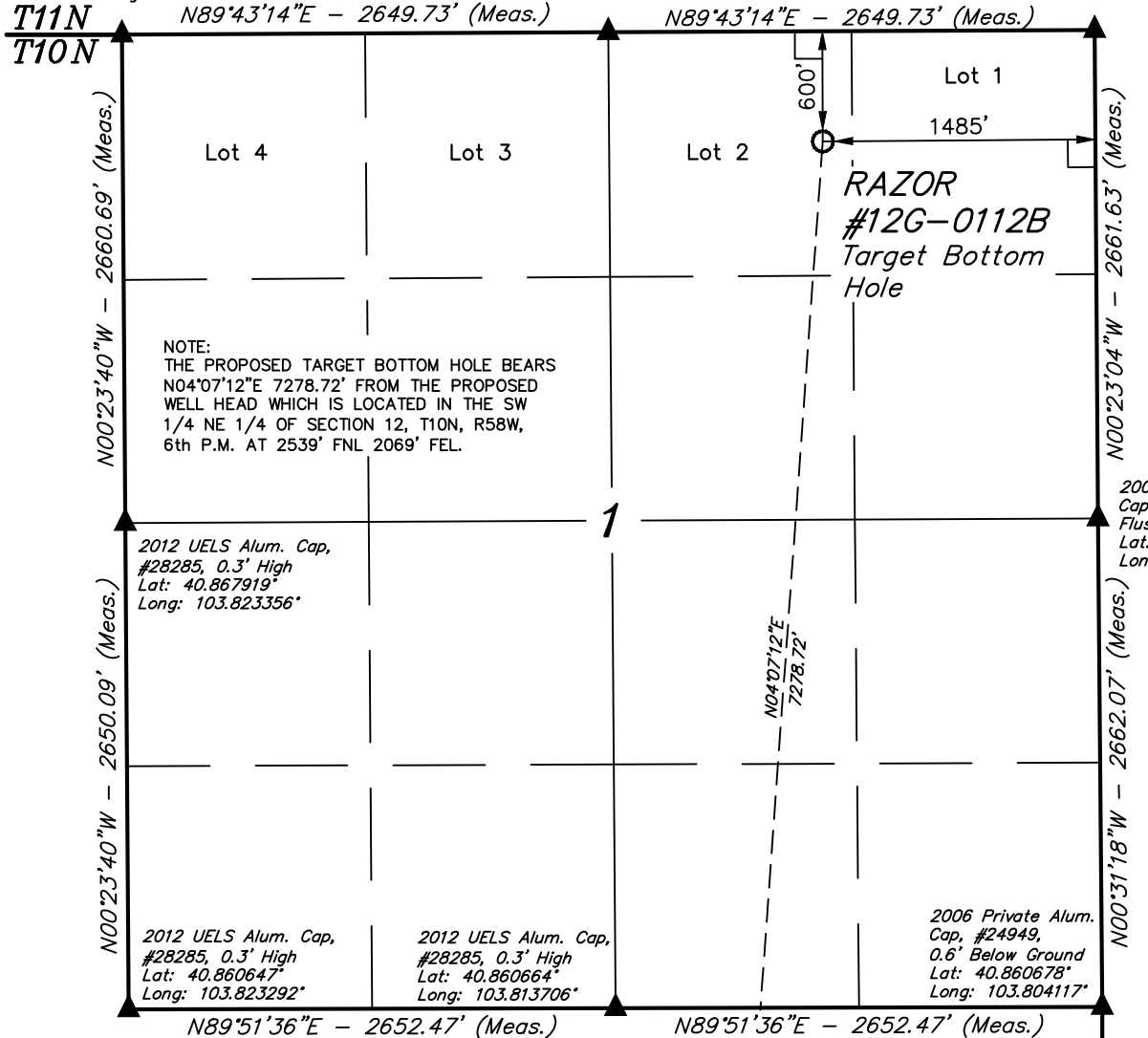
T10N, R58W, 6th P.M.

WHITING OIL & GAS CORP.

2012 UELS Alum. Cap,
#28285, 0.3' High
Lat: 40.875219°
Long: 103.823419°

2012 UELS Alum. Cap,
#28285, 0.3' High
Lat: 40.875256°
Long: 103.813842°

1917 BLM Brass Cap,
0.5' High, N-W Fence
Lat: 40.875286°
Long: 103.804261°



NOTE:
THE PROPOSED TARGET BOTTOM HOLE BEARS
N04°07'12"E 7278.72' FROM THE PROPOSED
WELL HEAD WHICH IS LOCATED IN THE SW
1/4 NE 1/4 OF SECTION 12, T10N, R58W,
6th P.M. AT 2539' FNL 2069' FEL.

2012 UELS Alum. Cap,
#28285, 0.3' High
Lat: 40.867919°
Long: 103.823356°

2012 UELS Alum. Cap,
#28285, 0.3' High
Lat: 40.860647°
Long: 103.823292°

2012 UELS Alum. Cap,
#28285, 0.3' High
Lat: 40.860664°
Long: 103.813706°

2006 Private Alum.
Cap, #24949,
0.6' Below Ground
Lat: 40.860678°
Long: 103.804117°

2006 Private Alum.
Cap, #24949,
Flush With Ground
Lat: 40.867983°
Long: 103.804203°

Surface Location ●

LEGEND:

- └─┘ = 90° SYMBOL
- = PROPOSED WELL HEAD.
- ▲ = SECTION CORNERS LOCATED.

NAD 83 (TARGET BOTTOM HOLE)
LATITUDE = 40°52'25.04" (40.873622)
LONGITUDE = 103°48'34.62" (103.809617)
NAD 27 (TARGET BOTTOM HOLE)
LATITUDE = 40°52'25.09" (40.873636)
LONGITUDE = 103°48'32.82" (103.809117)

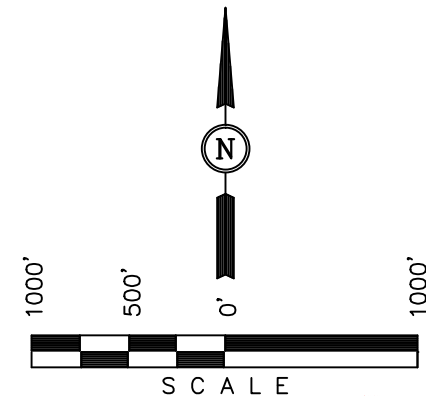
Well location, RAZOR #12G-0112B (TARGET BOTTOM HOLE), located as shown in Lot 2 of Section 1, T10N, R58W, 6th P.M., Weld County, Colorado.

BASIS OF ELEVATION

SPOT ELEVATION LOCATED AT THE NORTHEAST CORNER OF SECTION 15, T9N, R58W, 6th P.M. TAKEN FROM THE GATEHOOK SPRING, QUADRANGLE, COLORADO, WELD COUNTY, 7.5 MINUTE QUAD (TOPOGRAPHIC MAP) PUBLISHED BY THE UNITED STATES DEPARTMENT OF THE INTERIOR, GEOLOGICAL SURVEY. SAID ELEVATION IS MARKED AS BEING 4679 FEET.

BASIS OF BEARINGS

BASIS OF BEARINGS IS A G.P.S. OBSERVATION.



CERTIFICATE

THIS IS TO CERTIFY THAT THE ABOVE PLAT WAS PREPARED FROM FIELD NOTES OF ACTUAL SURVEYS MADE BY ME OR UNDER MY SUPERVISION AND THAT THE SAME ARE TRUE AND CORRECT TO THE BEST OF MY KNOWLEDGE AND BELIEF.

REGISTERED LAND SURVEYOR
REGISTRATION NO. 28285
STATE OF COLORADO

REV: 07-09-13 B.D.H.

UINTAH ENGINEERING & LAND SURVEYING 85 SOUTH 200 EAST - VERNAL, UTAH 84078 (435) 789-1017		
SCALE 1" = 1000'	DATE SURVEYED: 05-02-13	DATE DRAWN: 05-07-13
PARTY J.H. C.M. H.K.W.	REFERENCES G.L.O. PLAT	
WEATHER COOL	FILE WHITING OIL & GAS CORP.	