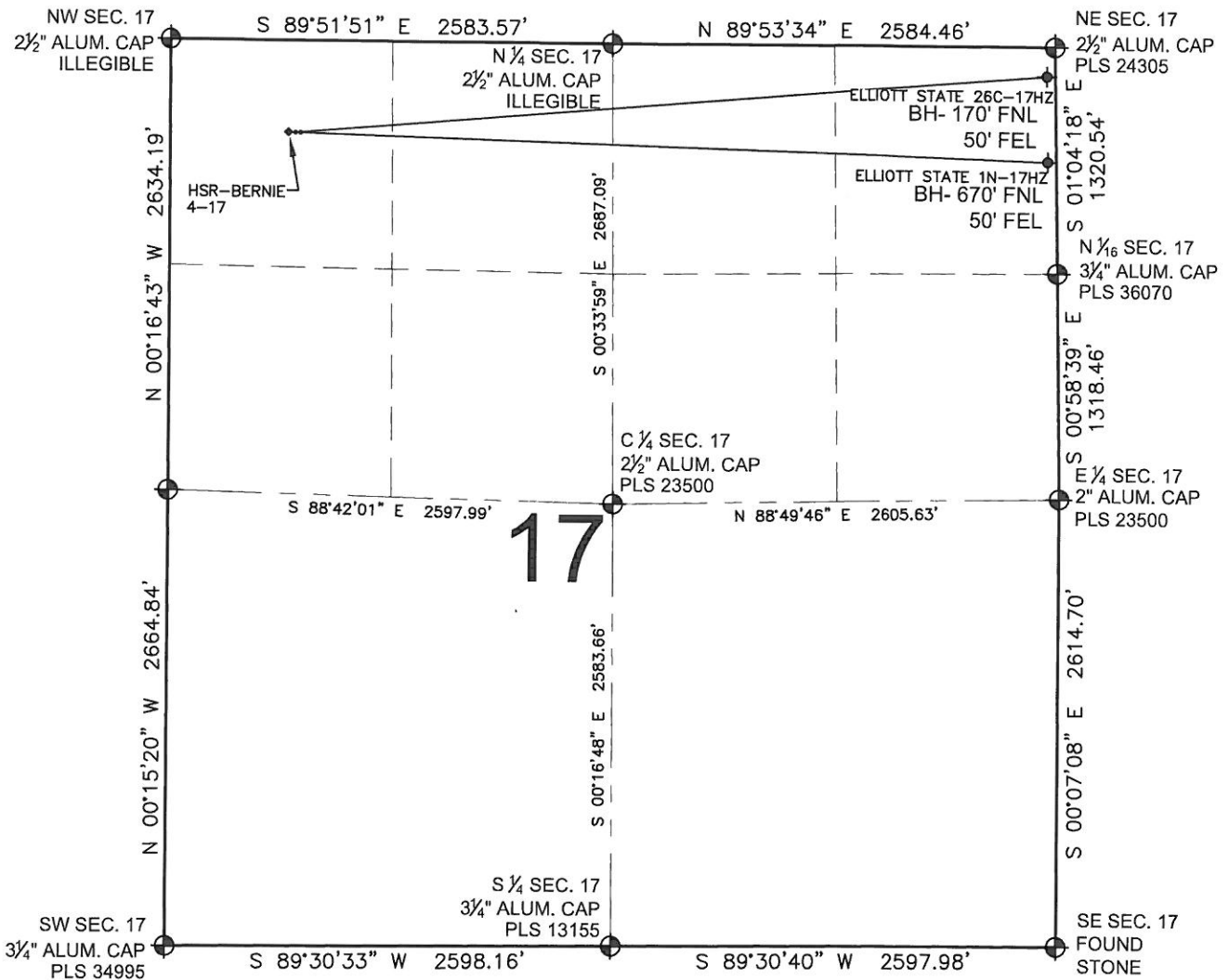


ELLIOTT STATE 26C-17HZ MULTI-WELL PLAN

SECTION 17, TOWNSHIP 3 NORTH, RANGE 67 WEST, 6TH P.M.



NOTES:
 ELLIOTT STATE 26C-17HZ TO BE AT 537' FNL, 730' FWL.
 BOTTOM HOLE AT 170' FNL & 50' FEL.
 ELLIOTT STATE 1N-17HZ TO BE AT 537' FNL, 760' FWL.
 BOTTOM HOLE AT 670' FNL & 50' FEL.
 HSR-BERNIE 4-17 IS 537' FNL, 680' FWL.

LEGEND

- ⊕ = EXISTING MONUMENT
- = PROPOSED WELL
- ⊕ (with BH) = BOTTOM HOLE
- ◆ = EXISTING WELL



PREPARED BY:

PFS llc
 Petroleum Field Services, LLC
 1801 W. 13th Ave.
 Denver, CO 80204

KERR-MCGEE OIL & GAS ONSHORE LP

FIELD DATE:
05-30-13

DRAWING DATE:
07-01-13

SURFACE LOCATION:

NW 1/4 NW 1/4, SEC. 17, T3N, R67W, 6TH P.M.
 WELD COUNTY, COLORADO