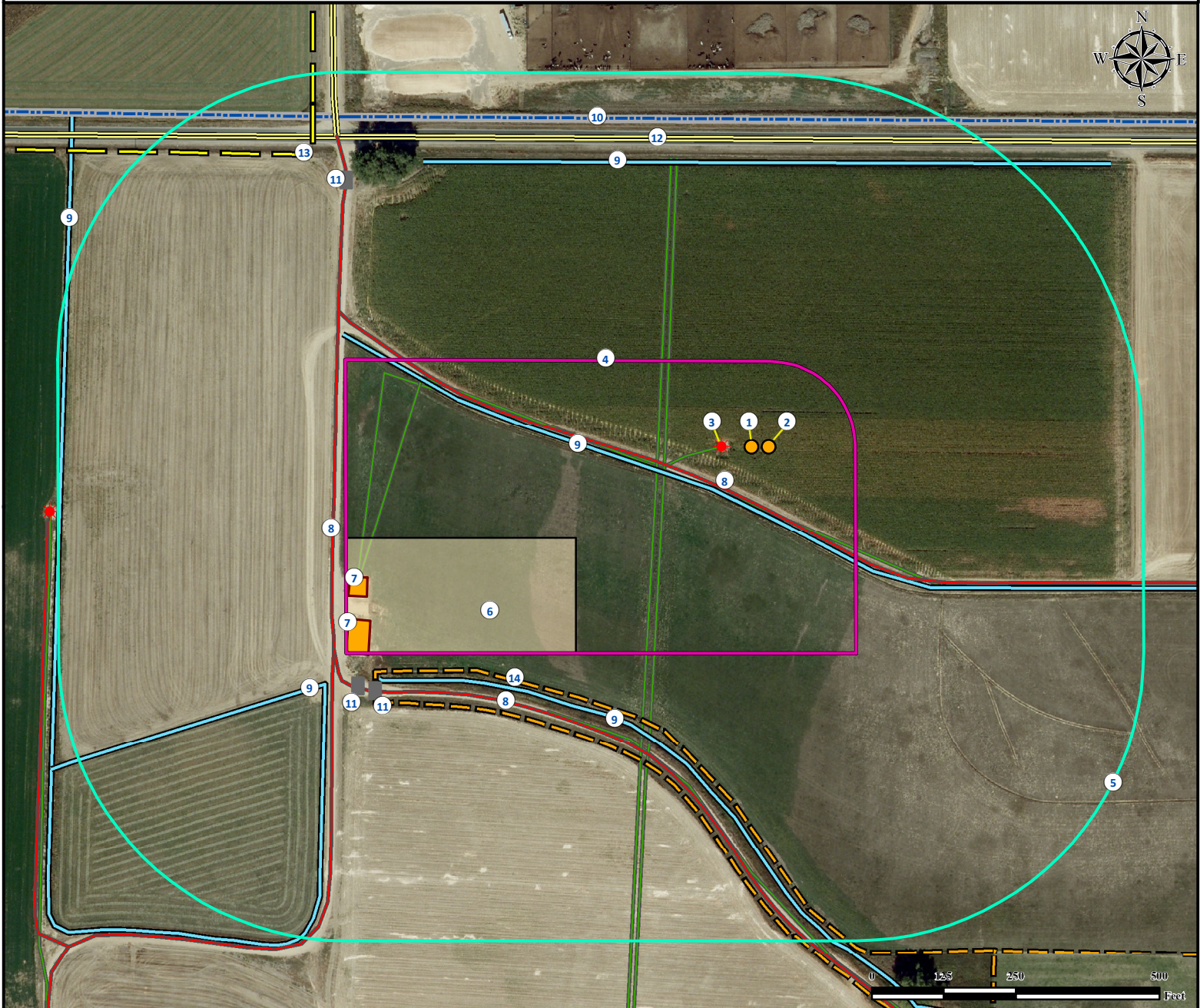


# Location Drawing

## ELLIOTT STATE 26C-17HZ

### Horizontal Multi Well Pad

NW¼ NW¼ SECTION 17, TOWNSHIP 3 NORTH, RANGE 67 WEST OF THE 6TH PRINCIPAL MERIDIAN



1. Proposed Well ELLIOTT STATE 26C-17HZ.
2. Proposed Well ELLIOTT STATE 1N-17HZ.
3. Existing Well BERNIE 4-7 is ±54' W.
4. Disturbance Area.
5. 500' Radius.
6. Proposed Facility is ±345' SW.

7. Existing Facilities are ±707' SW and ±729' SW.
8. Access Roads are ±86' SW, ±558' SW and ±725' W.
9. Ditches are ±96' SW, ±496' N, ±526' SW, ±849' SW and ±1200' W.

10. Concrete Ditch is ±570' N.
11. Cattle Guards are ±780' SW, ±801' SW and ±845' NW.
12. County Road 34 is ±537' N.
13. Powerline is ±919' NW.
14. Fence is ±510' SW.

Legend	
<span style="color: yellow;">●</span>	Proposed Well
<span style="color: red;">★</span>	Existing Well
<span style="background-color: gray; border: 1px solid black; display: inline-block; width: 10px; height: 10px;"></span>	Cattle Guard
<span style="border: 2px solid magenta; display: inline-block; width: 15px; height: 10px;"></span>	Disturbance Area
<span style="border: 2px solid cyan; display: inline-block; width: 15px; height: 10px;"></span>	500' Radius
<span style="background-color: orange; border: 1px solid black; display: inline-block; width: 15px; height: 10px;"></span>	Proposed Facility
<span style="background-color: orange; border: 1px solid black; display: inline-block; width: 15px; height: 10px;"></span>	Facility Enclosure
<span style="border-bottom: 2px solid red; display: inline-block; width: 20px;"></span>	Access Road
<span style="border-bottom: 2px solid cyan; display: inline-block; width: 20px;"></span>	Ditch
<span style="border-bottom: 2px solid green; display: inline-block; width: 20px;"></span>	Pipeline
<span style="border-bottom: 2px dashed yellow; display: inline-block; width: 20px;"></span>	Public Road
<span style="border-bottom: 2px solid yellow; display: inline-block; width: 20px;"></span>	Powerline
<span style="border-bottom: 2px dashed black; display: inline-block; width: 20px;"></span>	Fence

#### Reference Location

\*\* All measurements are made from Reference Well ELLIOTT STATE 26C-17HZ \*\*  
**Lat: 40.231678° Long: -104.920636° (NAD83)**  
**Elevation: 4836 Feet**

Surface Use: Irrigated Crop

Nearest Building Unit: 1000' NW

Prepared for:



**KERR-MCGEE OIL & GAS ONSHORE LP**



*Use our resources to find yours!*  
[www.petro-fs.com](http://www.petro-fs.com)  
**(303) 928-7128**

Field Date: 07/26/2012  
 Drafting Date: 08/27/2013  
 Drafter: JLF  
 Revision: 2

#### Data Sources:

- Aerial courtesy of Anadarko Petroleum Corporation (2010)  
 - Water wells courtesy of CDOWR