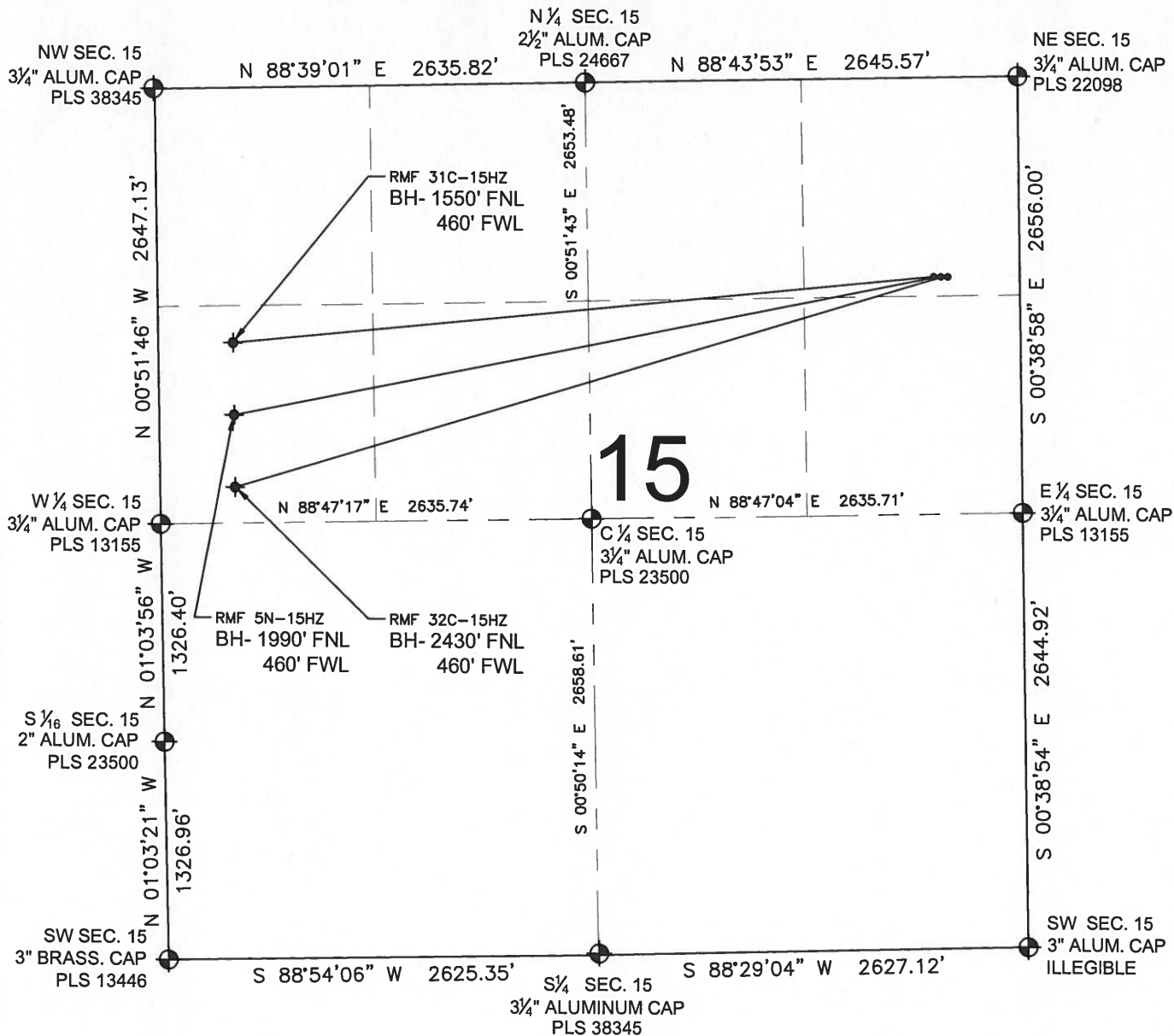


RMF 5N-15HZ MULTI-WELL PLAN

SECTION 15, TOWNSHIP 3 NORTH, RANGE 68 WEST, 6TH P.M.



LEGEND

- ⊕ = EXISTING MONUMENT
- ⬤ = PROPOSED WELL
- ⬥ = BOTTOM HOLE
- ⬥ = EXISTING WELL
- BH= BOTTOM HOLE

NOTES:

RMF 31C-15HZ TO BE AT 1209' FNL, 526' FEL.
 BOTTOM HOLE AT 1550' FNL & 460' FWL.
 RMF 5N-15HZ TO BE AT 1210' FNL, 496' FEL.
 BOTTOM HOLE AT 1990' FNL & 460' FWL.
 RMF 32C-15HZ TO BE AT 1210' FNL, 466' FEL.
 BOTTOM HOLE AT 2430' FNL & 460' FWL.

PREPARED BY:

PFS



Petroleum Field Services, LLC.
 1801 W. 13th Ave.
 Denver, CO 80204

KERR-MCGEE OIL & GAS ONSHORE LP

FIELD DATE:
 08-13-13

DRAWING DATE:
 08-20-13

SURFACE LOCATION:

NE 1/4 NE 1/4, SEC. 15, T3N, R68W, 6TH P.M.
 WELD COUNTY, COLORADO

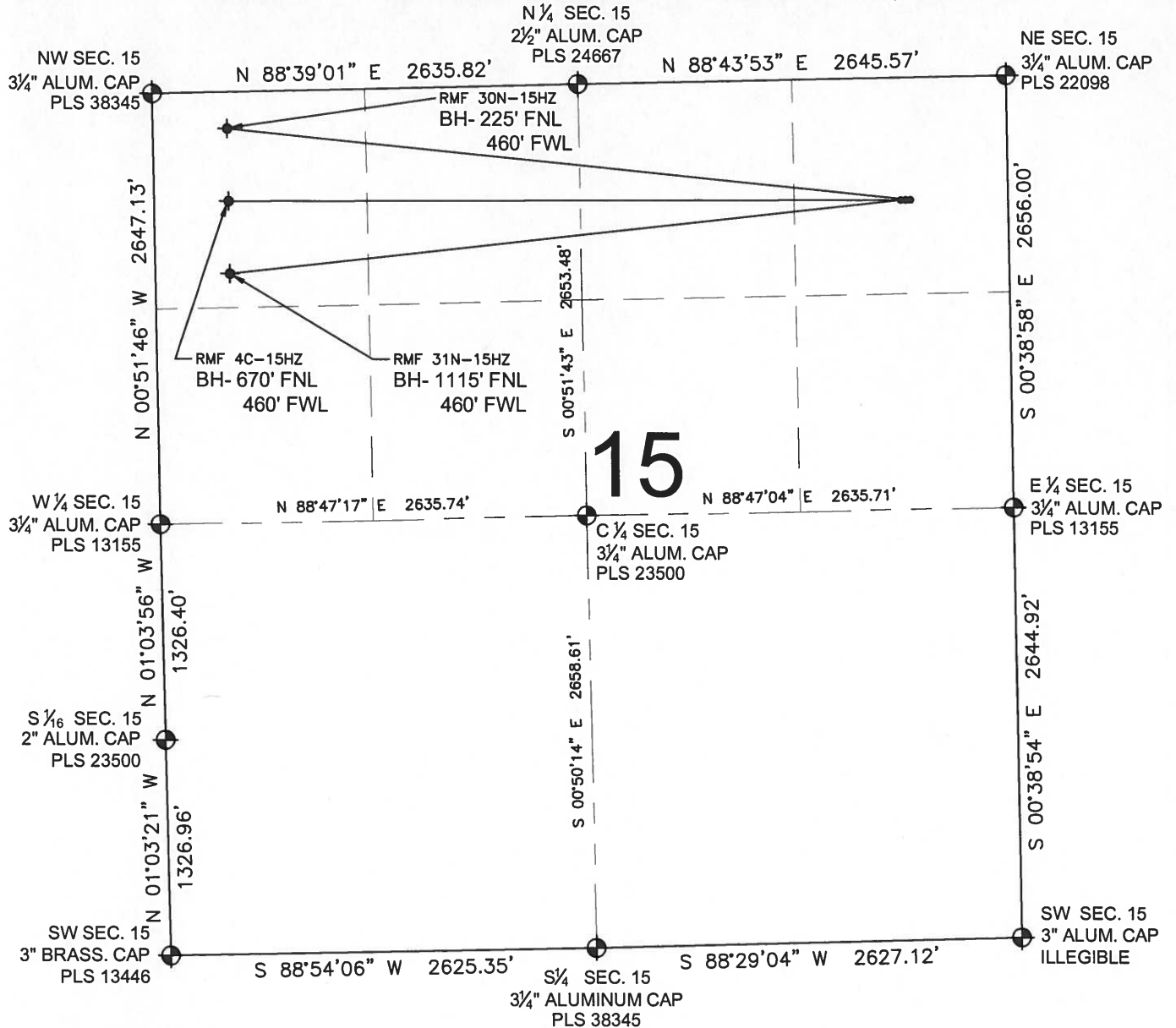


0 500 1000
 SCALE: 1"=1000'

RMF 4C-15HZ

MULTI-WELL PLAN

SECTION 15, TOWNSHIP 3 NORTH, RANGE 68 WEST, 6TH P.M.



LEGEND

- = EXISTING MONUMENT
- ◆ = BOTTOM HOLE
- BH= BOTTOM HOLE
- = PROPOSED WELL
- ◆ = EXISTING WELL

NOTES:

RMF 31N-15HZ TO BE AT 751' FNL, 662' FEL.
BOTTOM HOLE AT 1115' FNL & 460' FWL.
RMF 4C-15HZ TO BE AT 751' FNL, 632' FEL.
BOTTOM HOLE AT 670' FNL & 460' FWL.
RMF 30N-15HZ TO BE AT 751' FNL, 602' FEL.
BOTTOM HOLE AT 225' FNL & 460' FWL.

PREPARED BY:



KERR-MCGEE OIL & GAS ONSHORE LP

FIELD DATE:
08-13-13

DRAWING DATE:
08-19-13

SURFACE LOCATION:

NE 1/4 NE 1/4, SEC. 15, T3N, R68W, 6TH P.M.
WELD COUNTY, COLORADO

