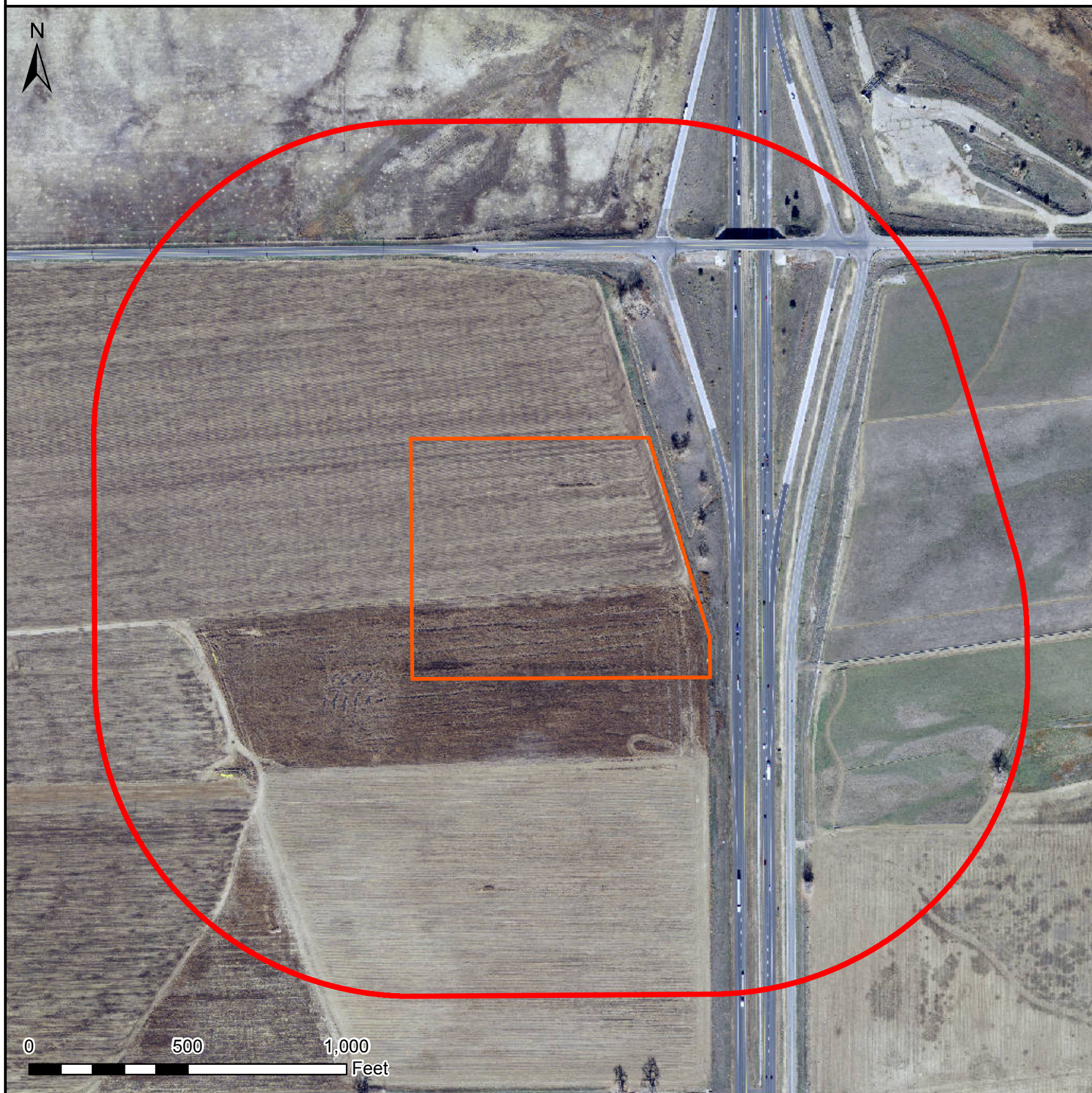


HYDROLOGY MAP RMF 5N-15HZ



Legend

- Well pad (proposed)
- 1000' buffer
- Existing oil/gas well (COGCC)

Nearest Surface Water Feature

Wetlands: 2190' N
Wetlands elevation: 4920'
Well elevation: 4967'

All measurements are made from
the reference well.



Date created: 10/16/2013
Created by: APC Regulatory GIS
Scale: 1:5,000
Projection: NAD83 UTM 13N