

# LITHOLOGY STRIP LOG

## WellSight Systems

Scale 1:240 (5"=100') Imperial  
Measured Depth Log

Well Name: ACE DRAW STATE 44-36 Side Track #1  
Location: SESE SEC. 36, T12N-R97W, MOFFAT COUNTY, COLORADO  
License Number: 05-081-07373-02  
Spud Date: 9/20/2013  
Surface Coordinates: SHL 935' FSL & 656' FEL  
SESE SECTION 36, T12N-R97W  
Bottom Hole Coordinates:  
Ground Elevation (ft): 6673' K.B. Elevation (ft): '  
Logged Interval (ft): 10319' To: ' Total Depth (ft): '  
Formation: LEWIS SH  
Type of Drilling Fluid: Drill/Deepdrill

Region: Sand Wash Basin  
Drilling Completed:

Printed by WellSight Log Viewer from WellSight Systems 1-800-447-1534 www.WellSight.com

### OPERATOR






Company: Forestar Petroleum Corporation  
Address: 1801 Broadway, Suite 600  
Denver, Colorado 80202

### GEOLOGIST



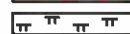


Name: Larry Goessman  
Company:  
Address:




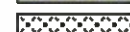
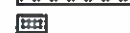
### Comments

### ROCK TYPES

 Anhy  
 Bent  
 Brec  
 Cht  
 Clyst

 Coal  
 Congl  
 Dol  
 Gyp  
 Igne

 Lmst  
 Meta  
 Mrlst  
 Salt  
 Shale

 Sltst3  
 Sltst  
 Ss  
 Till  
 Concrete2

### ACCESSORIES

#### MINERAL

- Gilsonton
- Frac
- Anhy
- Arg
- Bent
- Bit
- Brecfrag
- Calc
- Carb
- Chtdk
- Chtit1
- Chtlt
- Dol
- Feldspar
- Ferrpel
- Ferr
- Gyp
- Hvymin
- Kaol
- Marl

- Minxl
- Nodule
- Phos
- Salt
- Sandy1
- Sil
- Sulphur
- Tuff
- Glau1
- Pyr1
- Silt1
- Mica

#### FOSSIL

- Algae
- Amph
- Belm
- Bioclst
- Brach
- Bryozoa
- Cephal

- Coral
- Crin
- Echin
- Fish
- Foram
- Fossil
- Gastro
- Oolite
- Ostra
- Pelec
- Pellet
- Pisolite
- Plant
- Strom

#### STRINGER

- Anhy
- Arg
- Bent
- Coal
- Dol

- Gyp
- Ls
- Mrst
- Slt1
- Sltstrg
- Ssstrg

#### TEXTURE

- Boundst
- Chalky
- Cryxln
- Earthy
- Finexln
- Grainst
- Lithogr
- Microxln
- Mudst
- Packst
- Wackest

### OTHER SYMBOLS

#### POROSITY TYPE

- Earthy
- Fenest
- Fracture
- Inter
- Moldic
- Organic
- Pinpoint
- Vuggy

#### SORTING

- Well
- Moderate
- Poor

#### ROUNDING

- Rounded
- Subrnd
- Subang
- Angular

#### OIL SHOWS

- Even
- Spotted
- Ques
- Dea1d3
- Dead

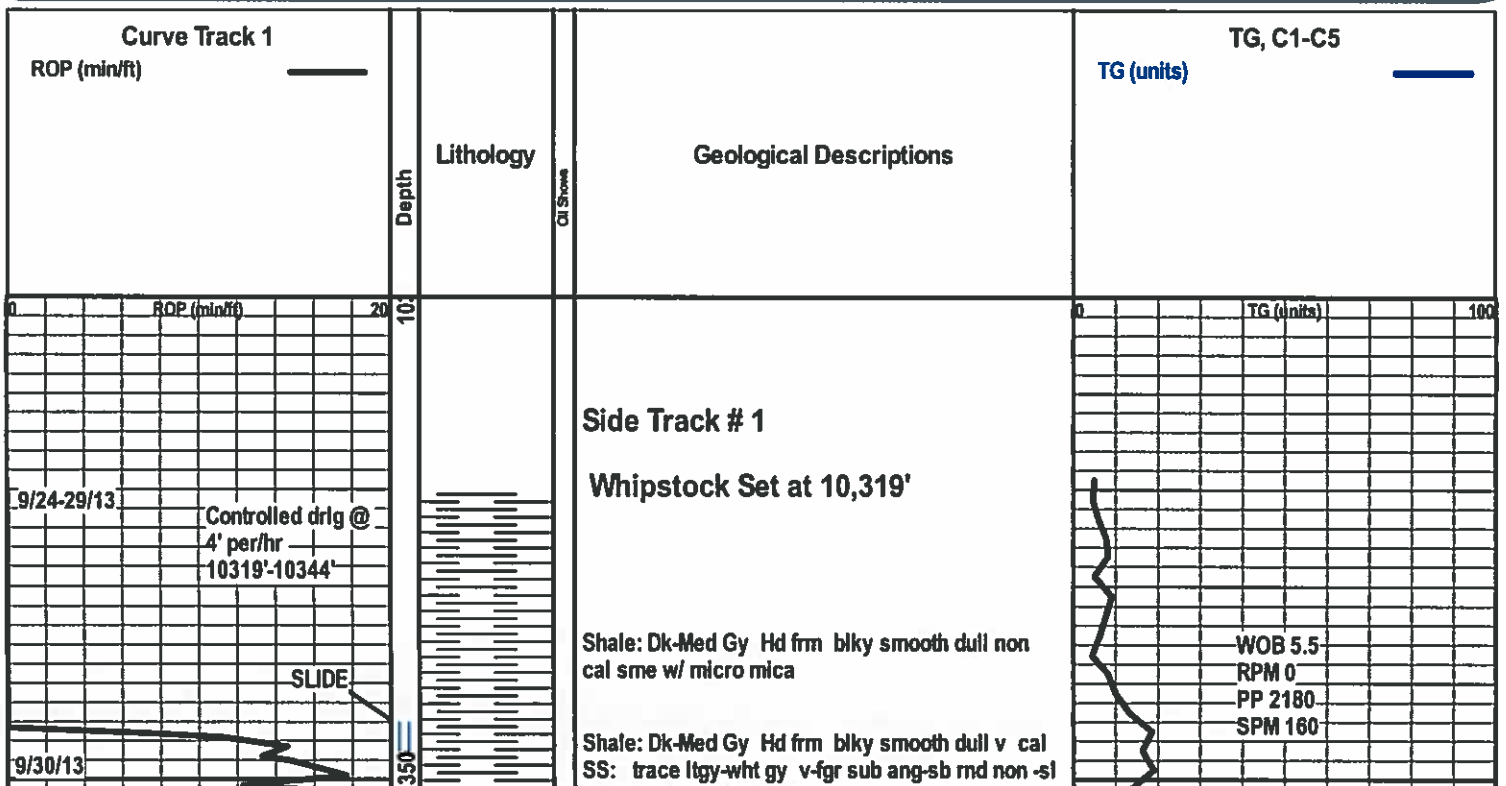
#### INTERVALS

- Core
- Dst

- blank
- Slide3

#### EVENTS

- Rft
- Sidewall bit



calc P vis por NFSOC

Shale: Dk-Med Gy Hd frm blk smooth dull v cal grdg to Sltstn; SS: trace ltgy-wht gy v-fgr sub ang-sb rnd non-sl calc P vis por NFSOC

Shale: Dk-Med Gy Hd frm blk smooth dull sl-non cal sme w/tr micro mica

Shale: Dk-Med Gy Hd frm blk smooth dull sl-non cal sme w/tr micro mica

Shale: Dk-Med Gy Hd frm blk smooth dull v cal grdg to Sltstn; SS: trace ltgy-gry brn v-fgr sub ang-sb rnd sl calc-v calc P vis por NFSOC

Shale: Dk-Med Gy Hd frm blk smooth dull sl-non cal sme w/tr micro mica

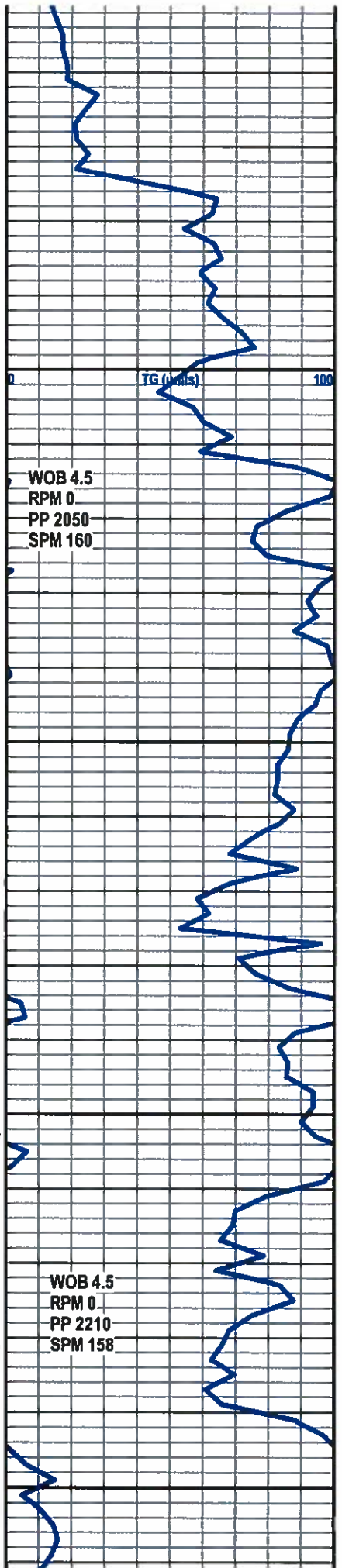
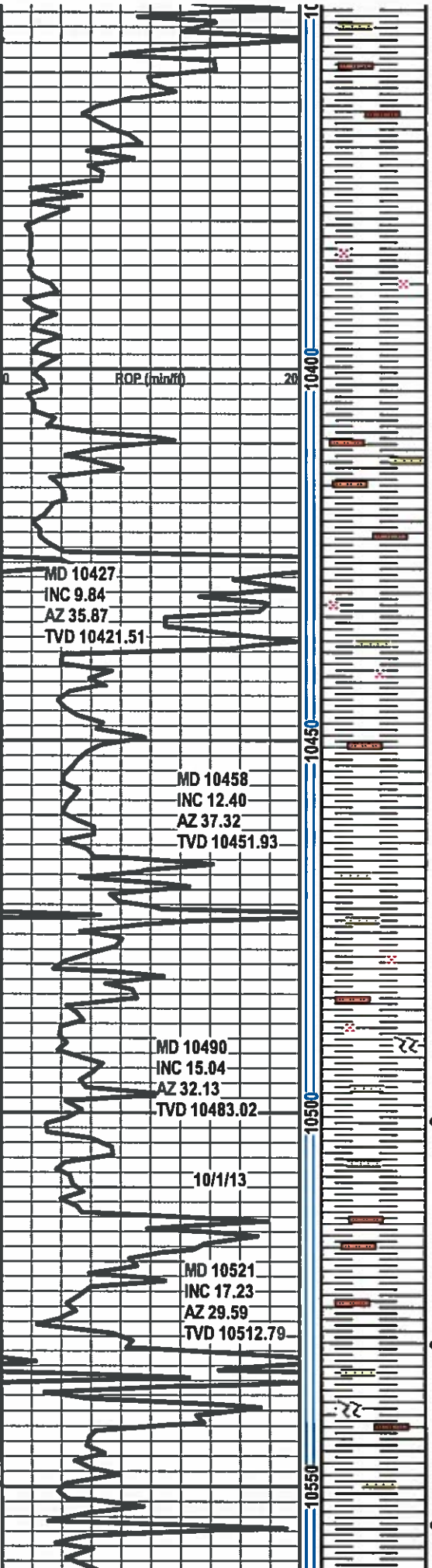
Shale: Dk-Med Gy Hd frm blk smooth dull v cal grdg to Sltstn; SS: trace ltgy-gry brn v-fgr sub ang-sb rnd sl calc-v calc P vis por NFSOC

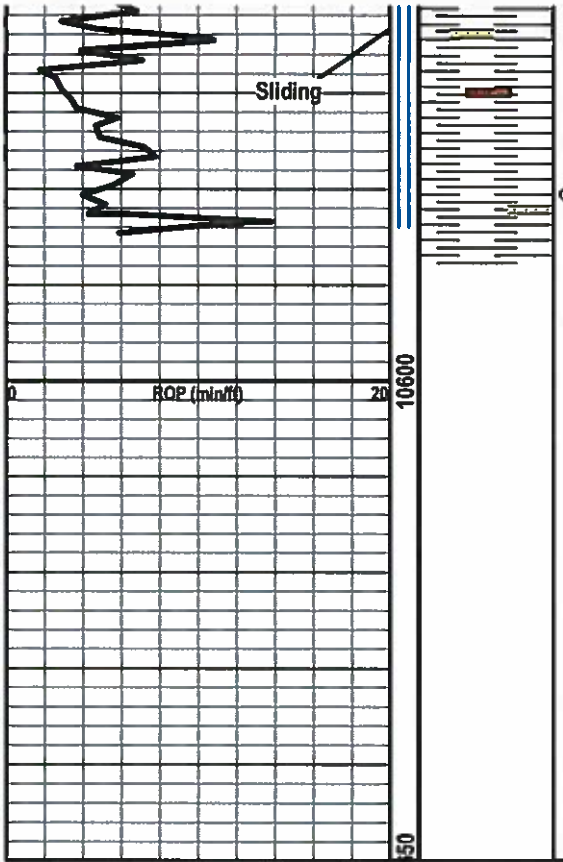
Shale: Dk-Med Gy Hd frm blk smooth dull sl-non cal sme w/tr micro mica:

Shale: Dk-Med Gy Hd frm blk smooth dull v cal grdg to Sltstn; SS: trace ltgy-gry brn v-fgr sub ang-sb rnd sl calc-v calc P vis por Tr brt yel gld fluor inst brt yel cut; Tr one or two calcite slivers w/ mineral fluor.

Shale: Dk-Med Gy Hd frm blk smooth dull v cal grdg to Sltstn; SS: trace ltgy-gry brn v-fgr sub ang-sb rnd sl calc-v calc P vis por Tr brt yel gld fluor inst brt yel cut; Tr one or two calcite slivers w/ mineral fluor.

Shale: Dk-Med Gy Hd frm blk smooth dull v cal grdg to Sltstn; SS: trace ltgy-gry brn v-fgr sub ang-sb rnd sl calc-v calc P vis por Tr brt yel gld fluor inst brt yel cut





Shale: Dk-Med Gy Hd frm blkly smooth dull v cal  
 grdg to Sltstn; SS: trace itgy-gry brn v-fgr sub  
 ang-sb rnd sl calc-v calc P vis por Tr brt yel gld  
 fluor inst brt yel cut

TD WELL @ 10,585' ON 10/1/13, WAITING ON  
 ORDERS

