

WHITING OIL & GAS CORP.
RAZOR #11F-1405A, #11F-1406B, #11F-1407A, #11F-1408B,
#11F-0205A, #11F-0206B, #11F-0207A & #11F-0208B
LOCATED IN WELD COUNTY, COLORADO
SECTION 11, T10N, R58W, 6th P.M.

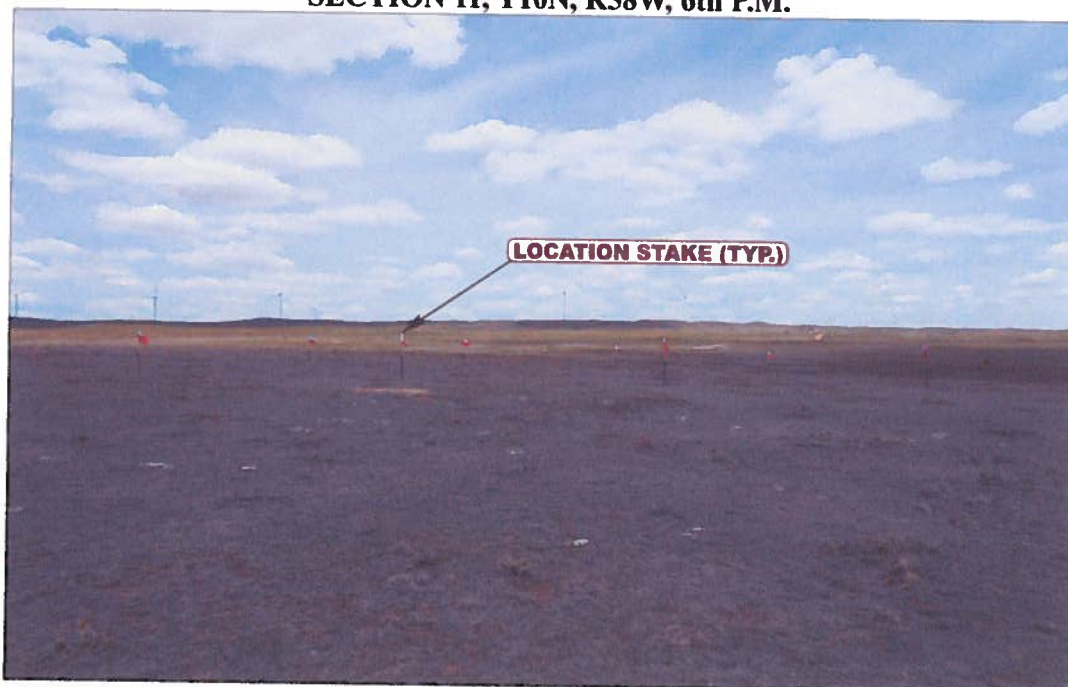


PHOTO: VIEW OF LOCATION STAKES

CAMERA ANGLE: NORTHERLY



PHOTO: VIEW OF LOCATION STAKES

CAMERA ANGLE: EASTERLY



- Since 1964 -

U E L S Uintah Engineering & Land Surveying
85 South 200 East Vernal, Utah 84078
(435) 789-1017 * FAX (435) 789-1813

LOCATION PHOTOS

05 17 13
MONTH DAY YEAR

PHOTO
P1

TAKEN BY: D.N. DRAWN BY: J.L.H. REV: 07-05-13 B.D.H.

WHITING OIL & GAS CORP.
RAZOR #11F-1405A, #11F-1406B, #11F-1407A, #11F-1408B,
#11F-0205A, #11F-0206B, #11F-0207A & #11F-0208B
LOCATED IN WELD COUNTY, COLORADO
SECTION 11, T10N, R58W, 6th P.M.



PHOTO: VIEW OF LOCATION STAKES

CAMERA ANGLE: SOUTHERLY



PHOTO: VIEW OF LOCATION STAKES

CAMERA ANGLE: WESTERLY



- Since 1964 -

UELS

Uintah Engineering & Land Surveying
85 South 200 East Vernal, Utah 84078
(435) 789-1017 * FAX (435) 789-1813

LOCATION PHOTOS

05 17 13
MONTH DAY YEAR

TAKEN BY: D.N. DRAWN BY: J.L.H. REV: 07-05-13 B.D.H.

PHOTO
P2