

WPX Energy Rocky Mtn LLC

FINAL - dated 9/27/13

RWF 24-29

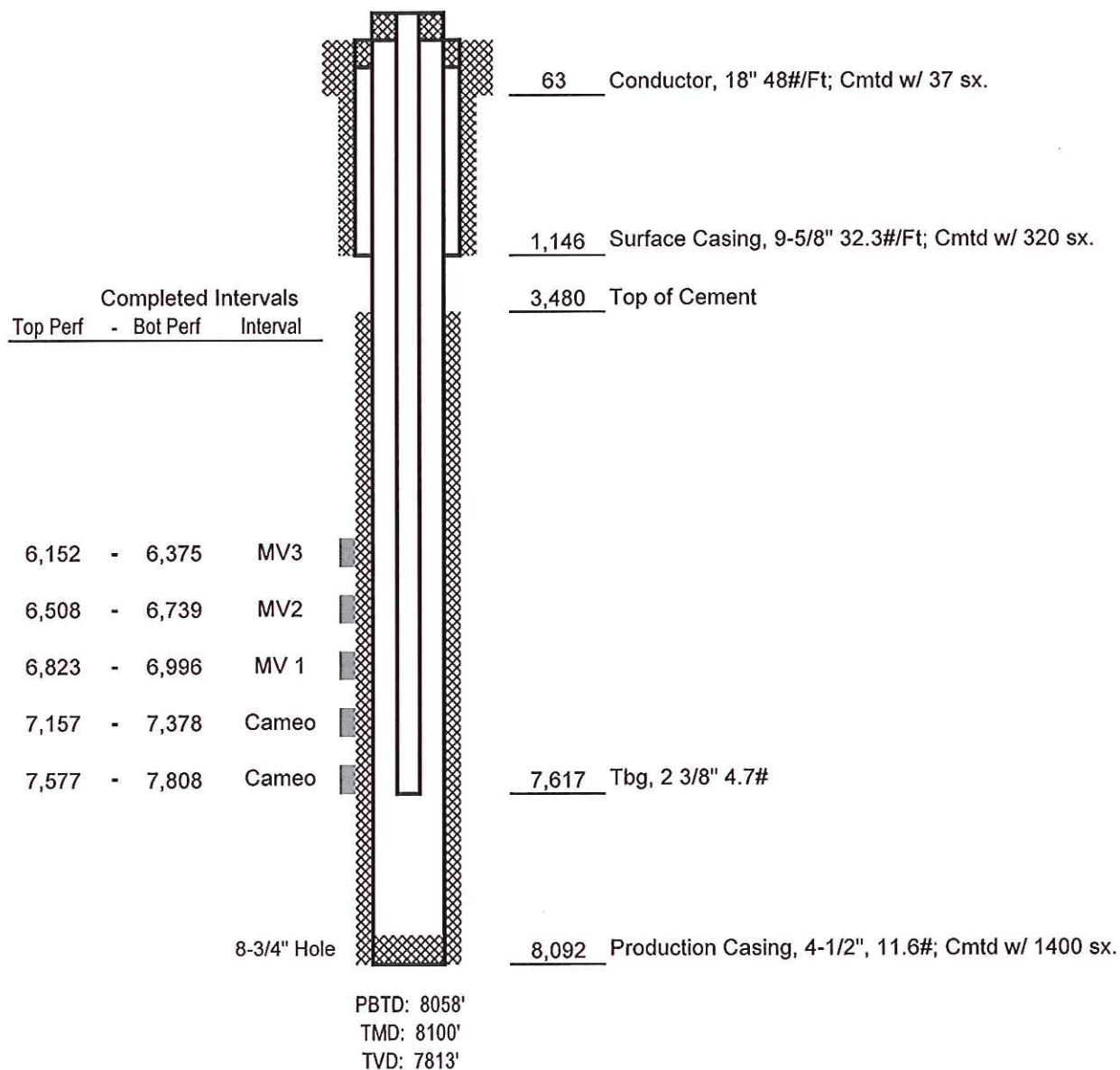
API #05-045-21658-00

511' FSL x 611' FWL - SHL - (SWSW)

353' FSL x 2251' FWL - BHL - (SESW)

Sec. 29-T6S-R94W

Garfield County, Colorado



Not to Scale