

The Road to Excellence Starts with Safety

| | | | |
|--|-----------------------------------|----------------------------------|--------------------------|
| Sold To #: 300721 | Ship To #: 3005205 | Quote #: | Sales Order #: 900527353 |
| Customer: WPX ENERGY ROCKY MOUNTAIN LLC-EBUS | | Customer Rep: Towers, Ron | |
| Well Name: RWF | Well #: 24-29 | API/UWI #: | |
| Field: RULSION | City (SAP): RIFLE | County/Parish: Garfield | State: Colorado |
| Contractor: Nabors | Rig/Platform Name/Num: Nabors 573 | | |
| Job Purpose: Cement Surface Casing | | | |
| Well Type: Development Well | | Job Type: Cement Surface Casing | |
| Sales Person: MAYO, MARK | | Srv Supervisor: ANDREWS, ANTHONY | MBU ID Emp #: 321604 |

Job Personnel

| HES Emp Name | Exp Hrs | Emp # | HES Emp Name | Exp Hrs | Emp # | HES Emp Name | Exp Hrs | Emp # |
|------------------|---------|--------|--------------------------|---------|--------|-------------------------|---------|--------|
| ANDERSON, ADAM S | 3.5 | 456683 | ANDREWS, ANTHONY Michael | 3.5 | 321604 | EICKHOFF, ROBERT Edward | 3.5 | 495311 |

Equipment

| HES Unit # | Distance-1 way | HES Unit # | Distance-1 way | HES Unit # | Distance-1 way | HES Unit # | Distance-1 way |
|------------|----------------|------------|----------------|------------|----------------|------------|----------------|
| | | | | | | | |

Job Hours

| Date | On Location Hours | Operating Hours | Date | On Location Hours | Operating Hours | Date | On Location Hours | Operating Hours |
|---------|-------------------|-----------------|------|-------------------|-----------------|------|-------------------|-----------------|
| 6/21/13 | 3.5 | 2.5 | | | | | | |

TOTAL Total is the sum of each column separately

Job

Job Times

| Formation Name | | Date | Time | Time Zone |
|-----------------------------|-------------------|---------------|-----------------|-----------|
| Formation Depth (MD) Top | Bottom | Called Out | 20 - Jun - 2013 | 20:30 MST |
| Form Type | BHST | On Location | 21 - Jun - 2013 | 00:00 MST |
| Job depth MD | 1100. ft | Job Started | 21 - Jun - 2013 | 01:25 MST |
| Water Depth | Wk Ht Above Floor | Job Completed | 21 - Jun - 2013 | 02:19 MST |
| Perforation Depth (MD) From | To | Departed Loc | 21 - Jun - 2013 | 03:30 MST |

Well Data

| Description | New / Used | Max pressure psig | Size in | ID in | Weight lbm/ft | Thread | Grade | Top MD ft | Bottom MD ft | Top TVD ft | Bottom TVD ft |
|-------------|------------|-------------------|---------|-------|---------------|--------|-------|-----------|--------------|------------|---------------|
|-------------|------------|-------------------|---------|-------|---------------|--------|-------|-----------|--------------|------------|---------------|

Tools and Accessories

| Type | Size | Qty | Make | Depth | Type | Size | Qty | Make | Depth | Type | Size | Qty | Make |
|--------------|------|-----|------|-------|-------------|------|-----|------|-------|----------------|------|-----|------|
| Guide Shoe | | | | | Packer | | | | | Top Plug | | | |
| Float Shoe | | | | | Bridge Plug | | | | | Bottom Plug | | | |
| Float Collar | | | | | Retainer | | | | | SSR plug set | | | |
| Insert Float | | | | | | | | | | Plug Container | | | |
| Stage Tool | | | | | | | | | | Centralizers | | | |

Miscellaneous Materials

| | | | | | | | |
|---------------|------|------------|------|-----------|------|------|---|
| Gelling Agt | Conc | Surfactant | Conc | Acid Type | Qty | Conc | % |
| Treatment Fld | Conc | Inhibitor | Conc | Sand Type | Size | Qty | |

Fluid Data

Stage/Plug #: 1

| Fluid # | Stage Type | Fluid Name | Qty | Qty uom | Mixing Density lbm/gal | Yield ft ³ /sk | Mix Fluid Gal/sk | Rate bbl/min | Total Mix Fluid Gal/sk |
|---------|------------|------------|-----|---------|------------------------|---------------------------|------------------|--------------|------------------------|
|---------|------------|------------|-----|---------|------------------------|---------------------------|------------------|--------------|------------------------|

Stage/Plug #: 1

| Fluid # | Stage Type | Fluid Name | Qty | Qty uom | Mixing Density uom | Yield uom | Mix Fluid uom | Rate uom | Total Mix Fluid uom |
|---------|--------------------|------------|-------|---------|--------------------|-----------|---------------|----------|---------------------|
| 1 | Fresh Water Spacer | | 20.00 | bbl | . | .0 | .0 | .0 | |

Cementing Job Summary

| Stage/Plug #: 1 | | | | | | | | | |
|--|--------------------------|-------------------------------|--------|-----------------------------------|------------------------|---------------------------|------------------|--------------|------------------------|
| Fluid # | Stage Type | Fluid Name | Qty | Qty uom | Mixing Density lbm/gal | Yield ft ³ /sk | Mix Fluid Gal/sk | Rate bbl/min | Total Mix Fluid Gal/sk |
| 2 | VersaCem Lead Cement | VERSACEM (TM) SYSTEM (452010) | 160.0 | sacks | 12.3 | 2.38 | 13.75 | | 13.75 |
| 3 | VersaCem Tail Cement | VERSACEM (TM) SYSTEM (452010) | 160.0 | sacks | 12.8 | 2.11 | 11.75 | | 11.75 |
| 4 | Fresh Water Displacement | | 88.00 | bbl | . | .0 | .0 | .0 | |
| Calculated Values | | Pressures | | Volumes | | | | | |
| Displacement | 87.7 | Shut In: Instant | | Lost Returns | N | Cement Slurry | 127.9 | Pad | |
| Top Of Cement | SURFACE | 5 Min | | Cement Returns | 30 | Actual Displacement | 87.7 | Treatment | |
| Frac Gradient | | 15 Min | | Spacers | 20 | Load and Breakdown | | Total Job | 235.6 |
| Rates | | | | | | | | | |
| Circulating | RIG | Mixing | 8 | Displacement | 10-2 | Avg. Job | 8 | | |
| Cement Left In Pipe | Amount | 36 ft | Reason | Shoe Joint | | | | | |
| Frac Ring # 1 @ | ID | Frac ring # 2 @ | ID | Frac Ring # 3 @ | ID | Frac Ring # 4 @ | ID | | |
| The Information Stated Herein Is Correct | | | | Customer Representative Signature | | | | | |

The Road to Excellence Starts with Safety

| | | | |
|--|-----------------------------------|-------------------------|--------------------------|
| Sold To #: 300721 | Ship To #: 3005205 | Quote #: | Sales Order #: 900527353 |
| Customer: WPX ENERGY ROCKY MOUNTAIN LLC-EBUS | Customer Rep: Towers, Ron | | |
| Well Name: RWF | Well #: 24-29 | API/UWI #: | |
| Field: RULSION | City (SAP): RIFLE | County/Parish: Garfield | State: Colorado |
| Legal Description: | | | |
| Lat: | | Long: | |
| Contractor: Nabors | Rig/Platform Name/Num: Nabors 573 | | |
| Job Purpose: Cement Surface Casing | | Ticket Amount: | |
| Well Type: Development Well | Job Type: Cement Surface Casing | | |
| Sales Person: MAYO, MARK | Srv Supervisor: ANDREWS, ANTHONY | MBU ID Emp #: 321604 | |

| Activity Description | Date/Time | Cht # | Rate bbl/min | Volume bbl | | Pressure psig | | Comments |
|---------------------------------------|------------------|-------|--------------|------------|-------|---------------|--------|--|
| | | | | Stage | Total | Tubing | Casing | |
| Call Out | 06/20/2013 20:30 | | | | | | | |
| Pre-Convoy Safety Meeting | 06/20/2013 22:25 | | | | | | | |
| Crew Leave Yard | 06/20/2013 22:30 | | | | | | | CREW WAS MOVED OVER FROM PREVIOUS JOB, REQUESTED ON LOCATION TIME WAS 2300, CREW ARRIVED @ MIDNIGHT (6/21/13), RIG WAS RIGGING DOWN CASING CREW. |
| Arrive At Loc | 06/21/2013 00:00 | | | | | | | |
| Assessment Of Location Safety Meeting | 06/21/2013 00:15 | | | | | | | |
| Other | 06/21/2013 00:20 | | | | | | | SPOT EQUIPMENT |
| Pre-Rig Up Safety Meeting | 06/21/2013 00:25 | | | | | | | |
| Rig-Up Equipment | 06/21/2013 00:30 | | | | | | | |
| Pre-Job Safety Meeting | 06/21/2013 01:15 | | | | | | | |
| Start Job | 06/21/2013 01:25 | | | | | | | TD: 1160 TP: 1150 SJ: 36' MW: 9.7 PPG 9 5/8" 32.3#/FT CSG IN 13 1/2" OH |
| Test Lines | 06/21/2013 01:27 | | | | | | | 3000 PSI TEST |
| Pump Spacer | 06/21/2013 01:31 | | 4 | 20 | | | 115.0 | FRESH H2O SPACER |
| Activity Description | Date/Time | Cht | Rate bbl/min | Volume bbl | | Pressure psig | | Comments |

Sold To #: 300721

Ship To #: 3005205

Quote #:

Sales Order #: 900527353

SUMMIT Version: 7.3.0081

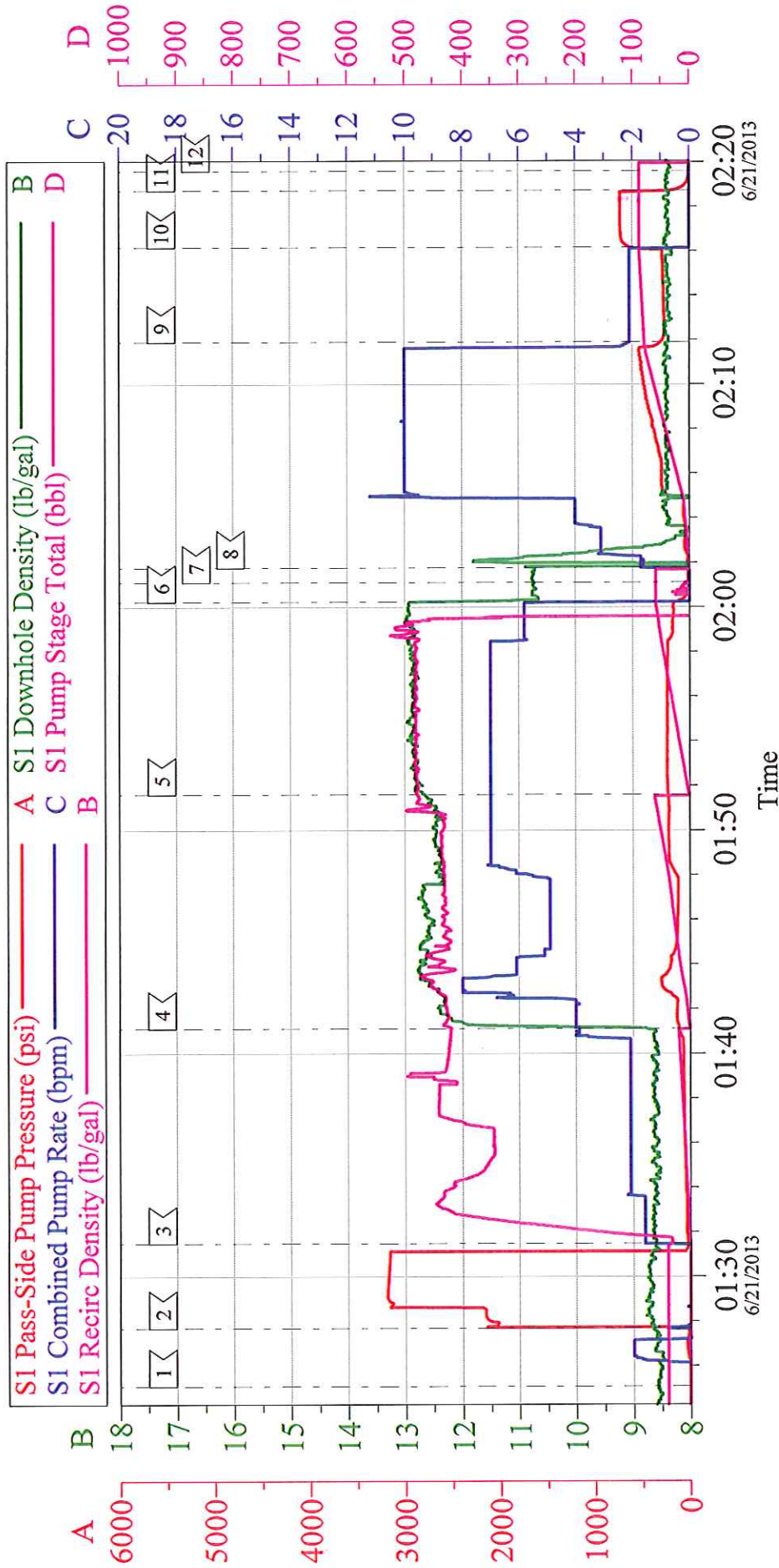
Saturday, June 22, 2013 03:12:00

Cementing Job Log

| | | # | | Stage | Total | Tubing | Casing | |
|---|---------------------|---|----|-------|-------|--------|--------|---|
| Pump Lead Cement | 06/21/2013 01:41 | | 8 | 67.8 | | | 136.0 | 160 SKS @ 12.3 PPG 2.38 YLD 13.75 GAL/SK H2O |
| Pump Tail Cement | 06/21/2013 01:51 | | 8 | 61.1 | | | 224.0 | 160 SKS @ 12.8 PPG 2.11 YLD 11.75 GAL/SK H2O |
| Shutdown | 06/21/2013 02:00 | | | | | | | |
| Drop Plug | 06/21/2013 02:01 | | | | | | | WASH UP ON TOP OF PLUG |
| Pump Displacement | 06/21/2013 02:01 | | 10 | | 87.7 | | 376.0 | FRESH H2O DISPLACEMENT |
| Slow Rate | 06/21/2013 02:11 | | 2 | 77 | | | 297.0 | |
| Bump Plug | 06/21/2013 02:16 | | 2 | 87.7 | | | 722.0 | PLUG BUMPED AT CALCULATED DISPLACEMENT |
| Check Floats | 06/21/2013 02:18 | | | | | | | FLOATS HELD. |
| End Job | 06/21/2013 02:19 | | | | | | | |
| Post-Job Safety Meeting (Pre Rig-Down) | 06/21/2013 02:25 | | | | | | | GOOD CIRCULATION THROUGHOUT JOB. PIPE WAS LEFT STATIC THROUGHOUT JOB. PLUG BUMPED AT CALCULATED DISPLACEMENT. FLOATS HELD. NO ADD HOURS CHARGED. 30 LBS SUGAR USED. |
| Rig-Down Equipment | 06/21/2013 02:30 | | | | | | | |
| Pre-Convoy Safety Meeting | 06/21/2013 03:25 | | | | | | | |
| Crew Leave Location | 06/21/2013 03:30 | | | | | | | THANK YOU FOR CHOOSING HALLIBURTON CEMENTING OF GRAND JUNCTION, COLORADO ANTHONY ANDREWS AND CREW |

WPX - RWF 24-29

9 5/8" SURFACE



| Local Event Log | | | | | |
|--------------------|----------------|---------------------|----------------|---------------|----------------|
| Intersection | SPPP | Intersection | SPPP | Intersection | SPPP |
| 1 START JOB | 01:25:04 3.000 | 2 TEST LINES | 01:27:41 19.08 | 3 PUMP SPACER | 01:31:28 20.62 |
| 4 PUMP LEAD CEMENT | 01:41:07 110.0 | 5 PUMP TAIL CEMENT | 01:51:35 224.0 | 6 SHUTDOWN | 02:00:13 143.0 |
| 7 DROP PLUG | 02:01:06 8.000 | 8 PUMP DISPLACEMENT | 02:01:46 8.560 | 9 SLOW RATE | 02:11:54 297.6 |
| 10 BUMP PLUG | 02:16:09 618.7 | 11 CHECK FLOATS | 02:18:44 190.6 | 12 END JOB | 02:19:36 3.000 |

| | | |
|-----------------------------|------------------------------------|--------------------------|
| Customer: WPX | Job Date: 21-Jun-2013 | Sales Order #: 900527353 |
| Well Description: RWF 24-29 | Job Type: SURFACE | ADC Used: YES |
| Company Rep: RON TOWERS | Cement Supervisor: ANTHONY ANDREWS | Elite #: ADAM ANDERSON |