

T7S, R97W, 6th P.M.

OXY USA WTP LP

Well location, SHELL #797-09-HN1 (SURFACE LOCATION), located as shown in TRACT 94 of Section 9, T7S, R97W, 6th P.M., Garfield County, Colorado.

BASIS OF ELEVATION

SPOT ELEVATION AT THE NORTHWEST CORNER OF SECTION 30, T5S, R95W, 6th P.M. TAKEN FROM THE FORKED GULCH QUADRANGLE, COLORADO, GARFIELD COUNTY, 7.5 MINUTE SERIES (TOPOGRAPHICAL MAP) PUBLISHED BY THE UNITED STATES DEPARTMENT OF THE INTERIOR, GEOLOGICAL SURVEY. SAID ELEVATION IS MARKED AS BEING 5966 FEET.

BASIS OF BEARINGS

BASIS OF BEARINGS IS A G.P.S. OBSERVATION.

LEGEND:

- = 90° SYMBOL
- = PROPOSED WELL HEAD.
- ▲ = SECTION CORNERS LOCATED.
- △ = SECTION CORNERS RE-ESTABLISHED. (Not Set on Ground.)



SCALE

CERTIFICATE

THIS IS TO CERTIFY THAT THE ABOVE PLAT WAS PREPARED FROM FIELD NOTES OF ACTUAL SURVEYS MADE BY A REGISTERED LAND SURVEYOR UNDER MY SUPERVISION AND THAT THE SAME ARE TRUE AND CORRECT TO THE BEST OF MY KNOWLEDGE AND BELIEF.

REVISED: 10-15-13 T.B.
REVISED: 10-11-13 T.B.
REVISED: 06-24-13 T.B.
REVISED: 01-16-08 C.G.
REVISED: 9-18-07 C.G.

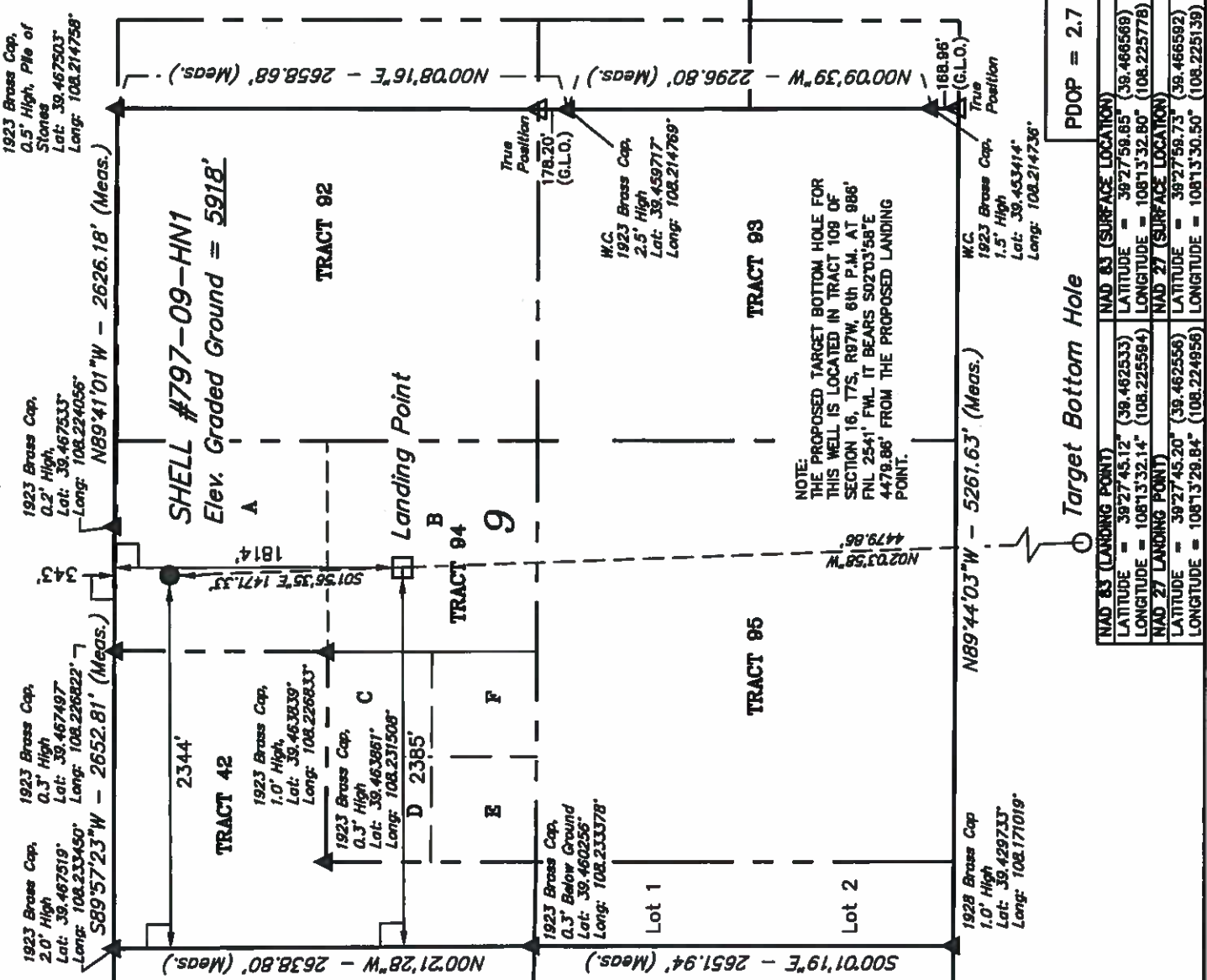
REGISTERED LAND SURVEYOR
REGISTRATION NO. 17870
STATE OF COLORADO
98-15-13

UTAH ENGINEERING & LAND SURVEYING

85 SOUTH 200 EAST - VERNAL, UTAH 84078

(435) 789-1017

SCALE 1" = 1000'	DATE SURVEYED: 07-16-07	DATE DRAWN: 08-01-07
PARTY B.J. D.D. K.G.	REFERENCES G.L.O. PLAT	
WEATHER WARM	FILE	OXY USA WTP LP



Surface Location T7S, R97W, 6th P.M.

OXY USA WTP LP

Well location, SHELL #797-09-HN1 (TARGET BOTTOM HOLE), located as shown in TRACT 109 of Section 16, T7S, R97W, 6th P.M., Garfield County, Colorado.

BASIS OF ELEVATION

SPOT ELEVATION AT THE NORTHWEST CORNER OF SECTION 30, T5S, R95W, 6th P.M. TAKEN FROM THE FORKED GULCH QUADRANGLE, COLORADO, GARFIELD COUNTY, 7.5 MINUTE SERIES (TOPOGRAPHICAL MAP) PUBLISHED BY THE UNITED STATES DEPARTMENT OF THE INTERIOR, GEOLOGICAL SURVEY. SAID ELEVATION IS MARKED AS BEING 5966 FEET.

BASIS OF BEARINGS

BASIS OF BEARINGS IS A G.P.S. OBSERVATION.

LEGEND:

- = 90° SYMBOL
- = PROPOSED WELL HEAD.
- ▲ = SECTION CORNERS LOCATED.
- △ = SECTION CORNERS RE-ESTABLISHED.
(Not Set on Ground.)

1000' 500' 0' 500' 1000'

SCALE

CERTIFICATE

THIS IS TO CERTIFY THAT THE ABOVE PLATONAS PREPARED FROM FIELD NOTES OF ACTUAL SURVEYS MADE BY ME OR UNDER MY SUPERVISION AND THAT THE SAME ARE TRUE AND CORRECT TO THE BEST OF MY KNOWLEDGE AND BELIEF.

REVISED: 10-15-13 T.B.
REVISED: 10-11-13 T.B.
REVISED: 06-24-13 T.B.

UNTAH ENGINEERING & LAND SURVEYING

85 SOUTH 200 EAST - VERNAL, UTAH 84076

(435) 789-1017

SCALE	1" = 1000'	DATE SURVEYED:	07-16-07	DATE DRAWN:	08-01-07
PARTY	B.J. D.D. K.G.	REFERENCES	G.L.O. PLAT		
WEATHER	WARM	FILE	OXY USA WTP LP		

W.C.
1923 Brass Cap,
1.5' High
Lat: 39.453414°
Long: 108.214736°

True
Position

N89°44'03"W - 5261.63' (Meas.)

168.96'

(G.L.O.)

N00°02'08"W - 2617.70' (Meas.)

98.6'

1928 Brass Cap
1.0' High
Lat: 39.429733°
Long: 108.171019°

2541'

TRACT 109

SHELL #797-09-HN1
Target Bottom Hole

TRACT 107

16

1923 Brass Cap
1.5' High, Leaning
Lat: 39.428247°
Long: 108.171311°

N00°03'12"E - 2638.12' (Meas.)

Brass Cap
1.0' High
Lat: 39.516608°
Long: 108.170694°

N00°08'18"W - 2627.76' (Meas.)

1928 Brass Cap
1.0' High
Lat: 39.516608°
Long: 108.246569°

N89°46'10"W - 5262.43' (Meas.)

TRACT 110

NOTE:
THE PROPOSED TARGET BOTTOM HOLE
BEARS S02°03'58"E 4479.86' FROM THE
PROPOSED LANDING POINT WHICH IS
LOCATED IN TRACT 94 OF SECTION 9, T7S,
R97W, 6th P.M. AT 1814' FNL 2385' FWL.

TRACT 108

1923 Brass Cap
1.0' High
Lat: 39.428253°
Long: 108.171497°

N00°04'01"W - 2644.93' (Meas.)

NAD 83 (TARGET BOTTOM HOLE)
LATITUDE = 39°27'00.89" (39.450247)
LONGITUDE = 108°13'30.01" (108.225003)

NAD 27 (TARGET BOTTOM HOLE)
LATITUDE = 39°27'00.97" (39.450268)
LONGITUDE = 108°13'27.71" (108.224384)

LINE TABLE

LINE	DIRECTION	LENGTH
L1	S02°03'58"E	4479.86'
L2	S01°56'35"E	1471.33'