

T7S, R97W, 6th P.M.

OXY USA WTP LP

1923 Brass Cap, 2.0' High  
Lat: 39.487519°  
Long: 108.233450°  
S89°57'23"W - 2652.81' (Meas.)

1923 Brass Cap, 0.3' High  
Lat: 39.467497°  
Long: 108.228022°  
N89°41'01"W - 2626.18' (Meas.)

1923 Brass Cap, 0.5' High, File of Stakes  
Lat: 39.467503°  
Long: 108.214758°

1923 Brass Cap, 0.2' High  
Lat: 39.467533°  
Long: 108.224056°

1923 Brass Cap, 1.0' High  
Lat: 39.463830°  
Long: 108.228833°

1923 Brass Cap, 0.3' High  
Lat: 39.463961°  
Long: 108.231508°

1923 Brass Cap, 0.3' Below Ground  
Lat: 39.460256°  
Long: 108.233378°

1923 Brass Cap, 1.5' High  
Lat: 39.453414°  
Long: 108.214736°

1928 Brass Cap, 1.0' High  
Lat: 39.429733°  
Long: 108.177019°

1923 Brass Cap, 0.3' High  
Lat: 39.467497°  
Long: 108.228022°

1923 Brass Cap, 0.3' High  
Lat: 39.467497°  
Long: 108.228022°

1923 Brass Cap, 0.3' High  
Lat: 39.467497°  
Long: 108.228022°

1923 Brass Cap, 0.3' High  
Lat: 39.467497°  
Long: 108.228022°

1923 Brass Cap, 0.3' High  
Lat: 39.467497°  
Long: 108.228022°

1923 Brass Cap, 0.3' High  
Lat: 39.467497°  
Long: 108.228022°

1923 Brass Cap, 0.3' High  
Lat: 39.467497°  
Long: 108.228022°

1923 Brass Cap, 0.3' High  
Lat: 39.467497°  
Long: 108.228022°

1923 Brass Cap, 0.3' High  
Lat: 39.467497°  
Long: 108.228022°

1923 Brass Cap, 0.3' High  
Lat: 39.467497°  
Long: 108.228022°

1923 Brass Cap, 0.3' High  
Lat: 39.467497°  
Long: 108.228022°

1923 Brass Cap, 0.3' High  
Lat: 39.467497°  
Long: 108.228022°

1923 Brass Cap, 0.3' High  
Lat: 39.467497°  
Long: 108.228022°

1923 Brass Cap, 0.3' High  
Lat: 39.467497°  
Long: 108.228022°

1923 Brass Cap, 0.3' High  
Lat: 39.467497°  
Long: 108.228022°

1923 Brass Cap, 0.3' High  
Lat: 39.467497°  
Long: 108.228022°

1923 Brass Cap, 0.3' High  
Lat: 39.467497°  
Long: 108.228022°

1923 Brass Cap, 0.3' High  
Lat: 39.467497°  
Long: 108.228022°

1923 Brass Cap, 0.3' High  
Lat: 39.467497°  
Long: 108.228022°

1923 Brass Cap, 0.3' High  
Lat: 39.467497°  
Long: 108.228022°

1923 Brass Cap, 0.3' High  
Lat: 39.467497°  
Long: 108.228022°

1923 Brass Cap, 0.3' High  
Lat: 39.467497°  
Long: 108.228022°

1923 Brass Cap, 0.3' High  
Lat: 39.467497°  
Long: 108.228022°

1923 Brass Cap, 0.3' High  
Lat: 39.467497°  
Long: 108.228022°

1923 Brass Cap, 0.3' High  
Lat: 39.467497°  
Long: 108.228022°

1923 Brass Cap, 0.3' High  
Lat: 39.467497°  
Long: 108.228022°

1923 Brass Cap, 0.3' High  
Lat: 39.467497°  
Long: 108.228022°

1923 Brass Cap, 0.3' High  
Lat: 39.467497°  
Long: 108.228022°

1923 Brass Cap, 0.3' High  
Lat: 39.467497°  
Long: 108.228022°

1923 Brass Cap, 0.3' High  
Lat: 39.467497°  
Long: 108.228022°

1923 Brass Cap, 0.3' High  
Lat: 39.467497°  
Long: 108.228022°

1923 Brass Cap, 0.3' High  
Lat: 39.467497°  
Long: 108.228022°

1923 Brass Cap, 0.3' High  
Lat: 39.467497°  
Long: 108.228022°

1923 Brass Cap, 0.3' High  
Lat: 39.467497°  
Long: 108.228022°

1923 Brass Cap, 0.3' High  
Lat: 39.467497°  
Long: 108.228022°

1923 Brass Cap, 0.3' High  
Lat: 39.467497°  
Long: 108.228022°

Well location, SHELL #797-09-HN1 (SURFACE LOCATION), located as shown in TRACT 94 of Section 9, T7S, R97W, 6th P.M., Garfield County, Colorado.

**BASIS OF ELEVATION**  
SPOT ELEVATION AT THE NORTHWEST CORNER OF SECTION 30, T5S, R95W, 6th P.M. TAKEN FROM THE FORKED GULCH QUADRANGLE, COLORADO, GARFIELD COUNTY, 7.5 MINUTE SERIES (TOPOGRAPHICAL MAP) PUBLISHED BY THE UNITED STATES DEPARTMENT OF THE INTERIOR, GEOLOGICAL SURVEY. SAID ELEVATION IS MARKED AS BEING 5966 FEET.

**BASIS OF BEARINGS**  
BASIS OF BEARINGS IS A G.P.S. OBSERVATION.

**LEGEND:**  
└ = 90° SYMBOL  
● = PROPOSED WELL HEAD.  
▲ = SECTION CORNERS LOCATED.  
△ = SECTION CORNERS RE-ESTABLISHED.  
(Not Set on Ground.)



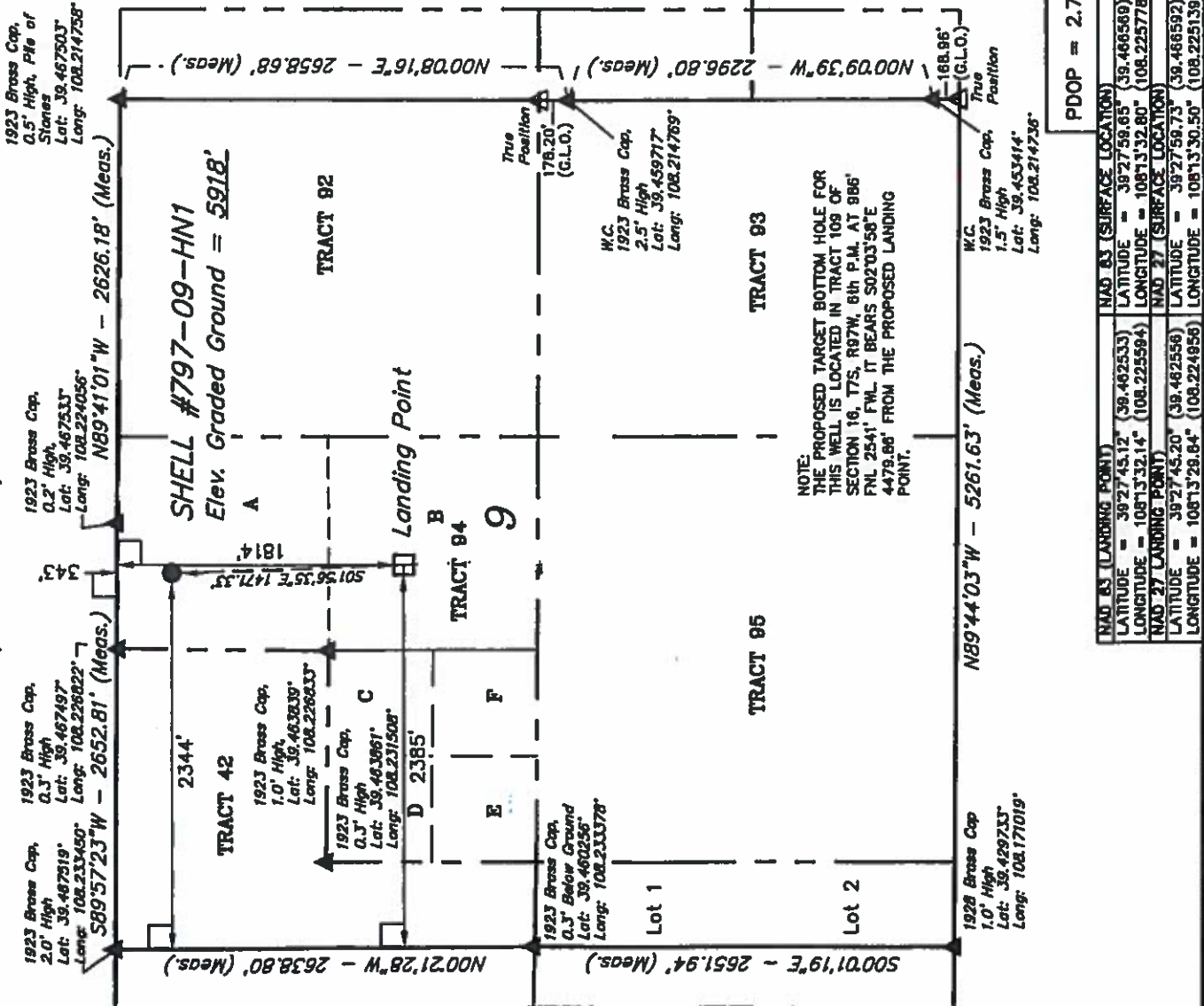
**CERTIFICATE**

THIS IS TO CERTIFY THAT THE ABOVE PLAT WAS PREPARED FROM FIELD NOTES OF ACTUAL SURVEYS MADE BY A LICENSED SURVEYOR UNDER MY SUPERVISION AND THAT THE SAME ARE TRUE AND CORRECT TO THE BEST OF MY KNOWLEDGE AND BELIEF.

REVISED: 10-15-13 T.B.  
REVISED: 10-11-13 T.B.  
REVISED: 06-24-13 T.B.  
REVISED: 01-16-08 C.G.  
REVISED: 9-18-07 C.G.

**UNTAH ENGINEERING & LAND SURVEYING**  
85 SOUTH 200 EAST - VERNAL, UTAH 84078  
(435) 789-1017

SCALE 1" = 1000'	DATE SURVEYED: 07-16-07	DATE DRAWN: 08-01-07
PARTY B.J. D.D. K.G.	REFERENCES G.L.O. PLAT	
WEATHER WARM	FILE	OXY USA WTP LP



NOTE:  
THE PROPOSED TARGET BOTTOM HOLE FOR SECTION 16, T7S, R97W, 6th P.M. AT 986' FNL 2541' FNL. IT BEARS S02°03'58"E 4479.86' FROM THE PROPOSED LANDING POINT.

1923 Brass Cap, 0.5' High, File of Stakes Lat: 39.467503° Long: 108.214758°	1923 Brass Cap, 0.2' High Lat: 39.467533° Long: 108.224056°	1923 Brass Cap, 1.0' High Lat: 39.463830° Long: 108.228833°	1923 Brass Cap, 0.3' High Lat: 39.463961° Long: 108.231508°	1923 Brass Cap, 0.3' Below Ground Lat: 39.460256° Long: 108.233378°	1923 Brass Cap, 1.5' High Lat: 39.453414° Long: 108.214736°	1928 Brass Cap, 1.0' High Lat: 39.429733° Long: 108.177019°
---	---	---	---	---	---	---