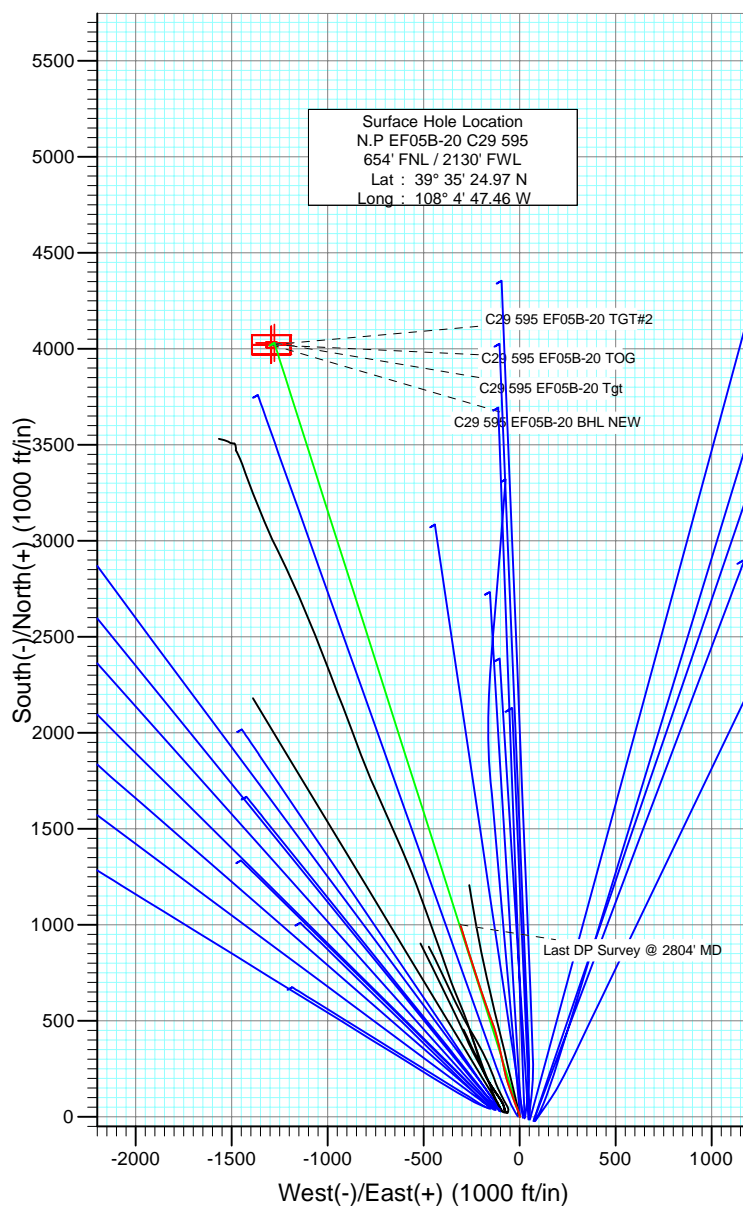
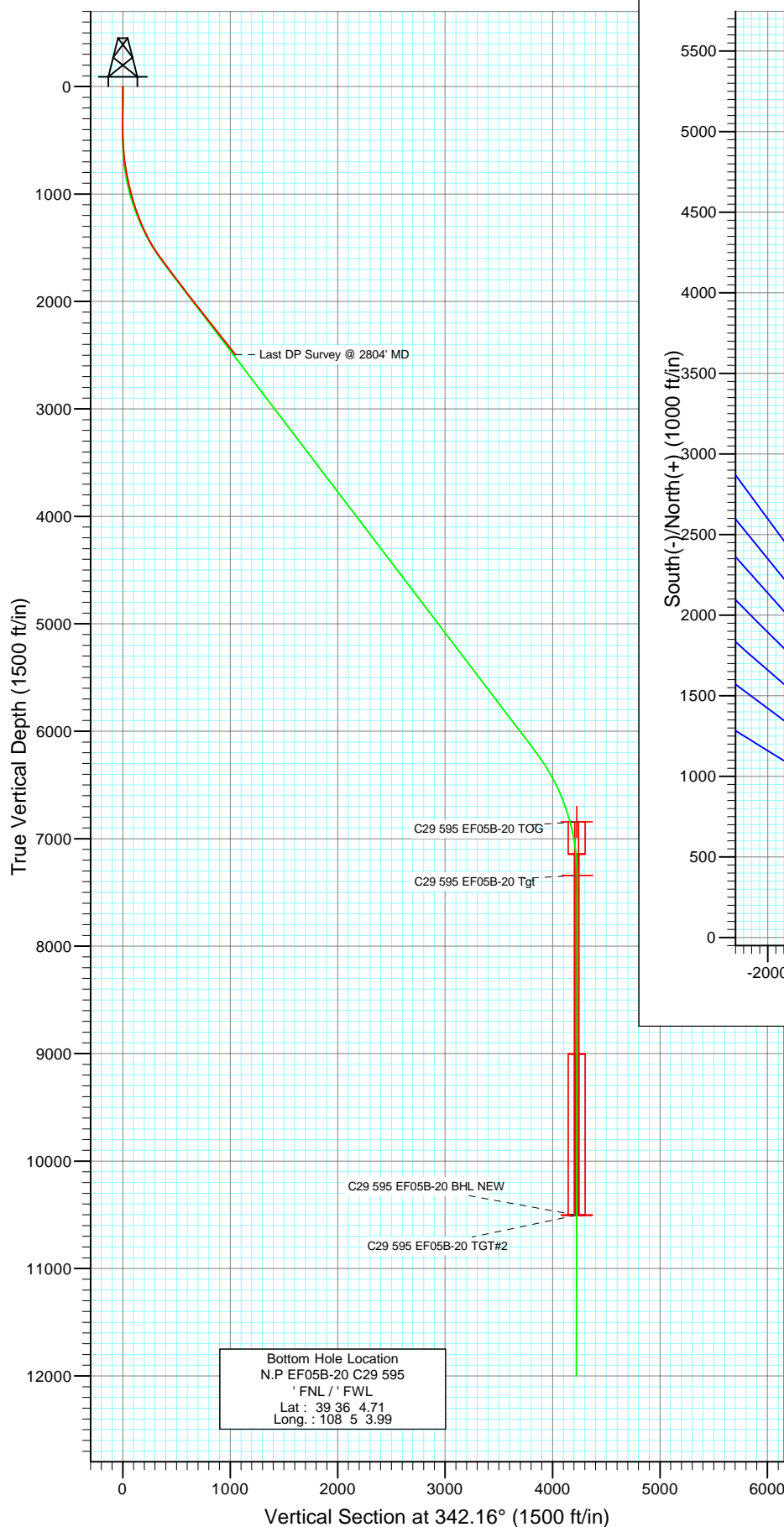




Project: North Piceance  
 Site: C29 595 Pad (NENW Sec29-T5S-R95W)  
 Well: N.P EF05B-20 C29 595  
 Wellbore: DD  
 Design: DD



Azimuths to True North  
 Magnetic North: 10.72°  
 Magnetic Field  
 Strength: 52567.7snT  
 Dip Angle: 65.88°  
 Date: 11/11/2008  
 Model: IGRF200510

DESIGN DETAILS: DD

Job#:85656; LR  
 KB @ 7032.0ft (Patterson 185)

Target	Azimuth	Origin	N/S	E/W	From TVD
No Target (Freehand)	342.16	Slot	0.0	0.0	0.0

# Cathedral Energy Services

## Survey Report

<b>Company:</b>	EnCana Oil & Gas (USA) Inc	<b>Local Co-ordinate Reference:</b>	Well N.P EF05B-20 C29 595
<b>Project:</b>	North Piceance	<b>TVD Reference:</b>	KB @ 7032.0ft (Patterson 185)
<b>Site:</b>	C29 595 Pad (NENW Sec29-T5S-R95W)	<b>MD Reference:</b>	KB @ 7032.0ft (Patterson 185)
<b>Well:</b>	N.P EF05B-20 C29 595	<b>North Reference:</b>	True
<b>Wellbore:</b>	DD	<b>Survey Calculation Method:</b>	Minimum Curvature
<b>Design:</b>	DD	<b>Database:</b>	EDM 2003.21 US Multi Users DB

<b>Project</b>	North Piceance		
<b>Map System:</b>	US State Plane 1983	<b>System Datum:</b>	Mean Sea Level
<b>Geo Datum:</b>	North American Datum 1983		
<b>Map Zone:</b>	Colorado Central Zone		

Site		C29 595 Pad (NENW Sec29-T5S-R95W)				
Site Position:		Northing:	1,650,184.70 ft	Latitude:	39° 35' 24.74 N	
From:	Lat/Long	Easting:	2,273,122.40 ft	Longitude:	108° 4' 46.43 W	
Position Uncertainty:		0.0 ft	Slot Radius:	in	Grid Convergence:	-1.63 °

Well	N.P EF05B-20 C29 595					
Well Position	+N/-S	0.0 ft	Northing:	1,650,209.92 ft	Latitude:	39° 35' 24.97 N
	+E/-W	0.0 ft	Easting:	2,273,042.48 ft	Longitude:	108° 4' 47.46 W
Position Uncertainty		0.0 ft	Wellhead Elevation:	ft	Ground Level:	7,010.0 ft

<b>Wellbore</b>	DD				
<b>Magnetics</b>	<b>Model Name</b>	<b>Sample Date</b>	<b>Declination (°)</b>	<b>Dip Angle (°)</b>	<b>Field Strength (nT)</b>
	IGRF200510	11/11/2008	10.72	65.88	52,568

<b>Design</b>	DD				
<b>Audit Notes:</b>					
<b>Version:</b>	1.0	<b>Phase:</b>	ACTUAL	<b>Tie On Depth:</b>	0.0
<b>Vertical Section:</b>	<b>Depth From (TVD)</b>	<b>+N/-S</b>	<b>+E/-W</b>	<b>Direction</b>	
	(ft)	(ft)	(ft)	(°)	
	0.0	0.0	0.0	342.16	

<b>Survey Program</b>	<b>Date</b>	12/22/2008			
<b>From (ft)</b>	<b>To (ft)</b>	<b>Survey (Wellbore)</b>	<b>Tool Name</b>	<b>Description</b>	
296.0	2,804.0	Survey #1 (DD)	MWD	Geolink MWD	

<b>Survey</b>										
<b>Measured Depth (ft)</b>	<b>Inclination (°)</b>	<b>Azimuth (°)</b>	<b>Vertical Depth (ft)</b>	<b>+N/-S (ft)</b>	<b>+E/-W (ft)</b>	<b>Vertical Section (ft)</b>	<b>Dogleg Rate (°/100ft)</b>	<b>Build Rate (°/100ft)</b>	<b>Formations / Comments</b>	
0.0	0.00	0.00	0.0	0.0	0.0	0.0	0.00	0.00		
296.0	0.20	134.80	296.0	-0.4	0.4	-0.5	0.07	0.07		
389.0	0.60	106.30	389.0	-0.6	0.9	-0.9	0.47	0.43		
482.0	1.70	8.70	482.0	0.6	1.6	0.1	2.02	1.18		
573.0	3.90	345.70	572.9	4.9	1.1	4.4	2.67	2.42		
665.0	6.90	345.60	664.5	13.3	-1.1	13.0	3.26	3.26		
757.0	9.40	341.40	755.5	25.8	-4.9	26.1	2.79	2.72		
849.0	10.90	334.60	846.1	40.8	-11.0	42.2	2.08	1.63		
941.0	13.20	341.30	936.0	58.6	-18.1	61.3	2.92	2.50		
1,032.0	16.00	337.50	1,024.1	80.0	-26.2	84.2	3.25	3.08		
1,124.0	18.20	339.90	1,112.0	105.2	-36.0	111.2	2.51	2.39		
1,216.0	19.90	342.10	1,199.0	133.6	-45.8	141.2	2.01	1.85		
1,307.0	22.90	341.10	1,283.7	165.1	-56.3	174.4	3.32	3.30		

# Cathedral Energy Services

## Survey Report

<b>Company:</b>	EnCana Oil & Gas (USA) Inc	<b>Local Co-ordinate Reference:</b>	Well N.P EF05B-20 C29 595
<b>Project:</b>	North Piceance	<b>TVD Reference:</b>	KB @ 7032.0ft (Patterson 185)
<b>Site:</b>	C29 595 Pad (NENW Sec29-T5S-R95W)	<b>MD Reference:</b>	KB @ 7032.0ft (Patterson 185)
<b>Well:</b>	N.P EF05B-20 C29 595	<b>North Reference:</b>	True
<b>Wellbore:</b>	DD	<b>Survey Calculation Method:</b>	Minimum Curvature
<b>Design:</b>	DD	<b>Database:</b>	EDM 2003.21 US Multi Users DB

Survey									
Measured Depth (ft)	Inclination (°)	Azimuth (°)	Vertical Depth (ft)	+N/-S (ft)	+E/-W (ft)	Vertical Section (ft)	Dogleg Rate (°/100ft)	Build Rate (°/100ft)	Formations / Comments
1,399.0	26.30	342.90	1,367.3	201.6	-68.0	212.7	3.78	3.70	
1,490.0	29.60	349.20	1,447.7	242.9	-78.2	255.2	4.86	3.63	
1,582.0	33.40	347.00	1,526.2	289.9	-88.2	303.0	4.31	4.13	
1,674.0	37.20	346.60	1,601.2	341.7	-100.3	356.0	4.14	4.13	
1,765.0	37.30	346.80	1,673.7	395.3	-113.0	410.9	0.17	0.11	
1,857.0	36.30	343.60	1,747.4	448.6	-127.0	465.9	2.35	-1.09	
1,949.0	36.90	340.10	1,821.2	500.7	-144.1	520.7	2.36	0.65	
2,040.0	36.40	338.60	1,894.2	551.5	-163.3	575.0	1.13	-0.55	
2,132.0	38.40	341.20	1,967.3	604.0	-182.4	630.8	2.77	2.17	
2,316.0	38.70	342.10	2,111.2	712.8	-218.5	745.5	0.35	0.16	
2,407.0	38.10	342.90	2,182.5	766.7	-235.5	802.0	0.86	-0.66	
2,499.0	37.20	342.40	2,255.4	820.3	-252.3	858.2	1.03	-0.98	
2,591.0	39.20	342.80	2,327.7	874.6	-269.3	915.1	2.19	2.17	
2,682.0	38.80	342.90	2,398.4	929.3	-286.2	972.3	0.44	-0.44	
2,754.0	38.10	342.30	2,454.8	972.1	-299.6	1,017.1	1.10	-0.97	
2,804.0	38.10	342.30	2,494.1	1,001.5	-309.0	1,048.0	0.00	0.00	Last DP Survey @ 2804' MD

Targets									
Target Name	Dip Angle (°)	Dip Dir. (°)	TVD (ft)	+N/-S (ft)	+E/-W (ft)	Northing (ft)	Easting (ft)	Latitude	Longitude
- hit/miss target									
- Shape									
C29 595 EF05B-20 TGT	0.00	0.00	10,502.0	4,021.2	-1,293.8	1,654,266.20	2,271,863.34	39° 36' 4.71 N	108° 5' 3.99 W
- survey misses target center by 8614.8ft at 2804.0ft MD (2494.1 TVD, 1001.5 N, -309.0 E)									
- Rectangle (sides W100.0 H200.0 D0.0)									
C29 595 EF05B-20 TOC	0.00	0.00	6,842.0	4,021.2	-1,293.8	1,654,266.20	2,271,863.34	39° 36' 4.71 N	108° 5' 3.99 W
- survey misses target center by 5384.5ft at 2804.0ft MD (2494.1 TVD, 1001.5 N, -309.0 E)									
- Rectangle (sides W100.0 H200.0 D300.0)									
C29 595 EF05B-20 Tgt	0.00	0.00	7,342.0	4,031.2	-1,276.8	1,654,275.75	2,271,880.66	39° 36' 4.81 N	108° 5' 3.77 W
- survey misses target center by 5798.1ft at 2804.0ft MD (2494.1 TVD, 1001.5 N, -309.0 E)									
- Point									
C29 595 EF05B-20 BHL	0.00	0.00	10,502.0	4,021.2	-1,293.8	1,654,266.20	2,271,863.34	39° 36' 4.71 N	108° 5' 3.99 W
- survey misses target center by 8614.8ft at 2804.0ft MD (2494.1 TVD, 1001.5 N, -309.0 E)									
- Rectangle (sides W30.0 H50.0 D0.0)									

Survey Annotations				
Measured Depth (ft)	Vertical Depth (ft)	Local Coordinates		Comment
		+N/-S (ft)	+E/-W (ft)	
2,804.0	2,494.1	1,001.5	-309.0	Last DP Survey @ 2804' MD

Checked By: \_\_\_\_\_ Approved By: \_\_\_\_\_ Date: \_\_\_\_\_