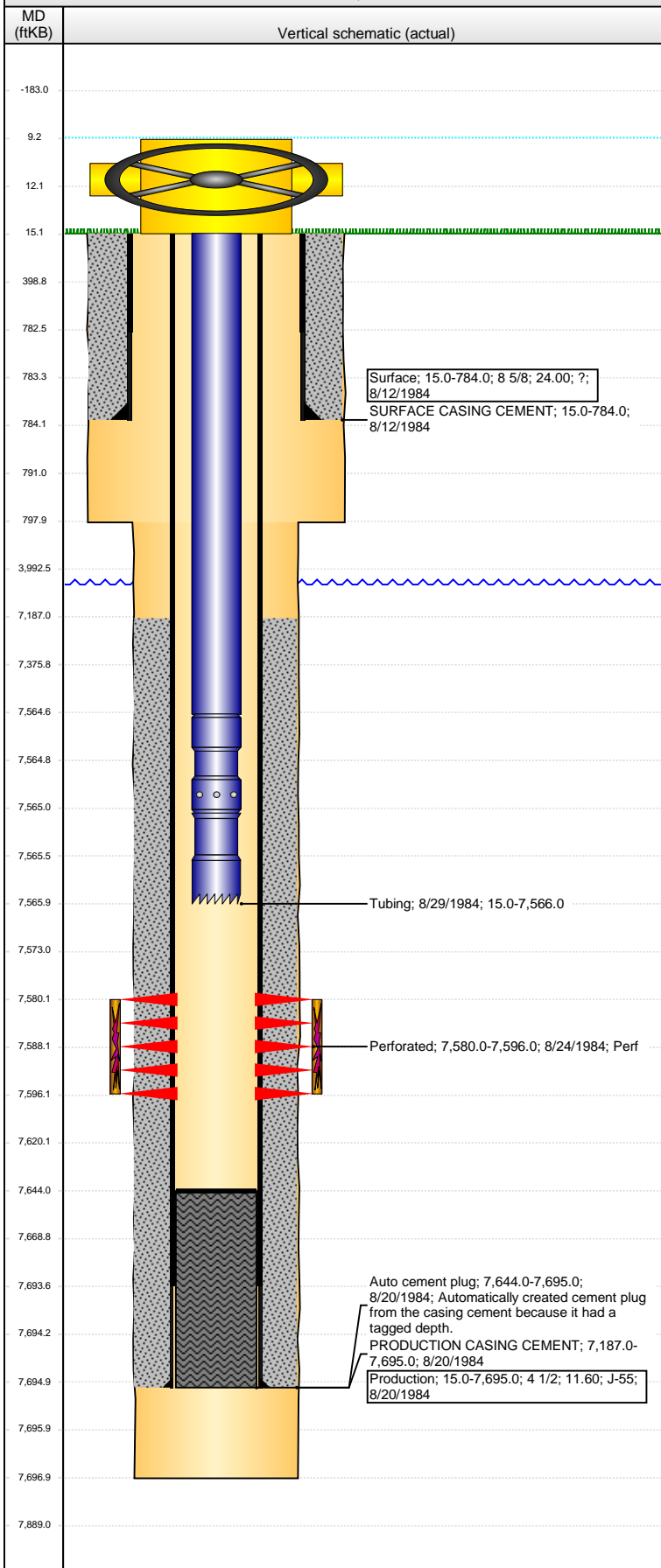


Well Name: GOETZ 02

VERTICAL - ORIGINAL HOLE, 10/30/2013 8:07:27 AM



Well Header

API	Business Unit	District	Well Config
05-123-11871	WATTENBERG	15	VERTICAL
Original KB Elevation (ft)	KB - GL / MSL (ftKB)	Spud Date	P & A Date
4,999.00	15.00	8/11/1984	
Comment			

Directions To Well

Congressional Location

Quarter 1	Quarter 2	Quarter 3	Quarter 4	Section	Township	Twnshp N...	Range	Rng E/W Dir
		NW	NW	22	2	N	64	W

Bottom Hole Location

North-South Distance (ft)	From N or S Line	East-West Distance (ft)	From E or W Line

Plug Back Total Depths

Date	Depth (ftKB)	Method	Com
8/24/1984	7,644.0	CASED HOLE LOG	DEPTH LOGGER ON CBL

Wellbore Sections

Section Des	Size (in)	Act Top (ftKB)	Act Btm (ftKB)
SURFACE	12 1/4	15.0	798.0
PRODUCTION	7 7/8	798.0	7,697.0

Zone Statuses

Zone Name	Status Date	Status	Job
J SAND	9/17/1984	PR	DRILLING/COMPLETION - ORIGINAL, 8/11/1984 00:00

Casing Strings

Surface, 784.0ftKB

Casing Description	Run Date	OD (in)	Wt/Len (l...)	Grade	Top (ftKB)	MD (ftKB)
Surface	8/12/1984	8 5/8	24.00	?	15.0	784.0

Production, 7,695.0ftKB

Casing Description	Run Date	OD (in)	Wt/Len (l...)	Grade	Top (ftKB)	MD (ftKB)
Production	8/20/1984	4 1/2	11.60	J-55	15.0	7,695.0

Cement

Description	Top Depth (ftKB)	Bottom Depth (ftKB)
SURFACE CASING CEMENT	15.0	784.0
PRODUCTION CASING CEMENT	7,187.0	7,695.0

Tubing Components

Item Des	OD (in)	Wt (lb/ft)	Grade	Jts	Len (ft)	Btm (ftKB)	Btm (TVD) (ftKB)
Tubing	2 3/8	4.70	J-55	234	7,549.50	7,564.5	
Seal Nipple	2 3/8			1	0.50	7,565.0	
Notched collar	2 3/8			1	1.00	7,566.0	

Perforation Data

Zone	Bnch/St g	Entered Shot Total	Top (ftKB)	Btm (ftKB)	Date
J SAND, ORIGINAL HOLE		32	7,580.00	7,596.00	8/24/1984

Stimulations & Treatments

Date	Zone	Primary Job Type
8/27/1994	J SAND, ORIGINAL HOLE	DRILLING/COMPLETION - ORIGINAL
Technical Result		Tech Result Details
Comment		Tech Result Note

Other In Hole

Run Date	Des	OD (in)	Top (ftKB)	Btm (ftKB)

Logs

Date	Type	Top (ftKB)	Btm (ftKB)
8/19/1984	COMPENSATED DENSITY	6,500.0	7,697.0
8/19/1984	INDUCTION	15.0	7,697.0
8/24/1984	CEMENT BOND	7,100.0	7,641.0