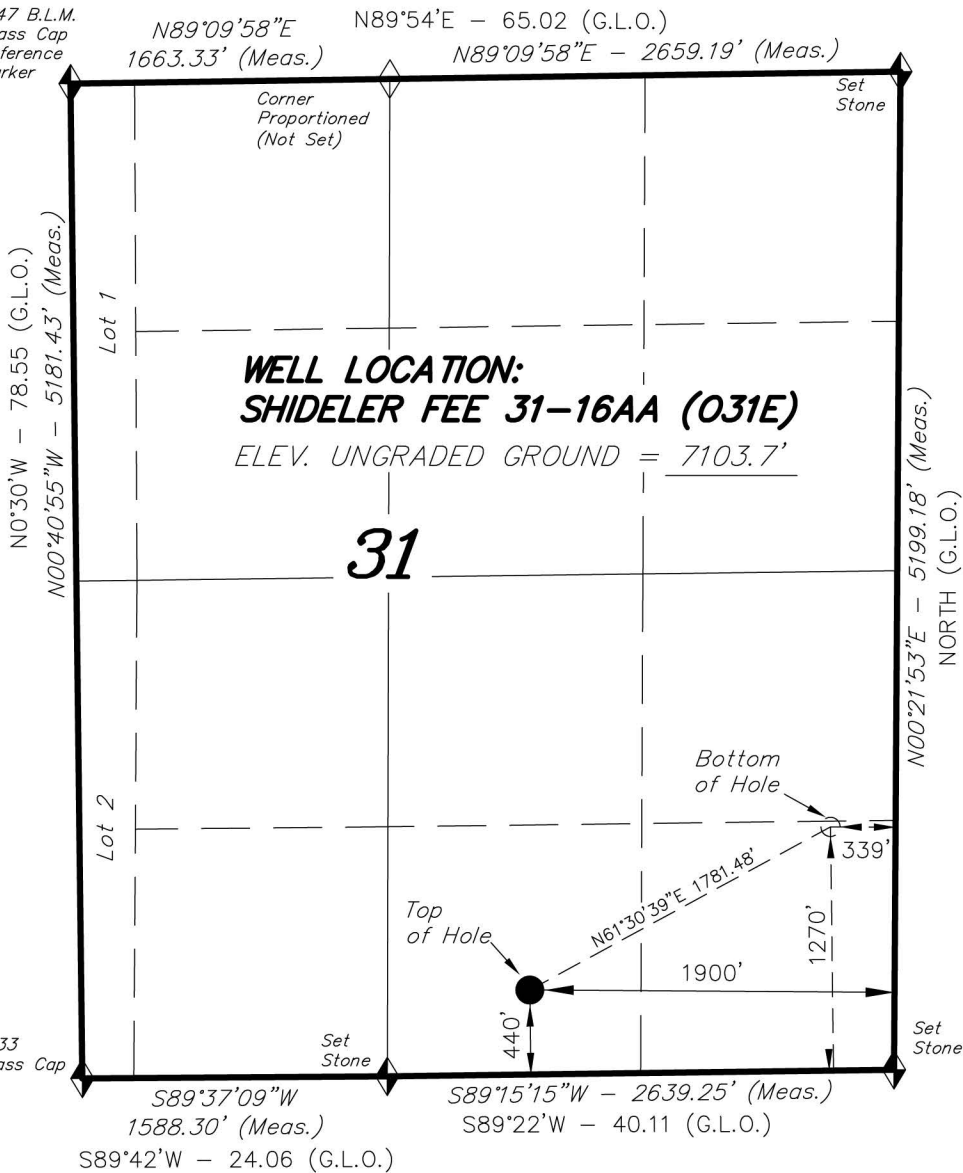


T7S, R92W, 6th P.M.

ENCANA OIL & GAS (USA) INC

1947 B.L.M.
Brass Cap
Reference
Marker



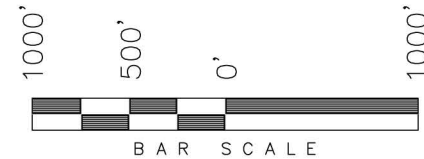
**WELL LOCATION:
SHIDELER FEE 31-16AA (O31E)**

ELEV. UNGRADED GROUND = 7103.7'

31

WELL LOCATION, SHIDELER FEE
31-16AA (O31E), LOCATED AS SHOWN
IN THE SW 1/4 SE 1/4 OF SECTION 31,
T7S, R92W, 6th P.M. GARFIELD COUNTY,
COLORADO.

TARGET BOTTOM HOLE, SHIDELER FEE
31-16AA (O31E), LOCATED AS SHOWN
IN THE SE 1/4 SE 1/4 OF SECTION 31,
T7S, R92W, 6th P.M. GARFIELD COUNTY,
COLORADO.



NOTES:

1. Well footages are measured at right angles to the Section Lines.
2. Bearings are based on Global Positioning Satellite observations.
3. G.P.S. Operator: C.D. Slauch, (PDOP) = 2.9

THIS IS TO CERTIFY THAT THE ABOVE PLAT WAS PREPARED FROM FIELD NOTES OF ACTUAL SURVEYS MADE BY ME OR UNDER MY SUPERVISION. THE LOCATION HAS BEEN STAKED ON THE GROUND AS SHOWN ON THE PLAT, AND THAT THE SAID COORDINATES ARE TRUE AND CORRECT TO THE BEST OF MY KNOWLEDGE AND BELIEF.

Steve C. Slauch
REGISTERED LAND SURVEYOR
REGISTRATION NO. 30125
STATE OF COLORADO
30125

◆ = SECTION CORNERS LOCATED

Basis of elevation is the Rifle 2 Triangulation Station. 39°31'53.80" N Lat. & 107°47'07.78" W Long. (NAD 83). Elevation = 5323.1' (NAVD88).

NAD 83 (SURFACE LOCATION)	
LATITUDE	= 39°23'49.19" (39.396998°)
LONGITUDE	= 107°42'20.45" (107.705682°)
NAD 83 (BOTTOM HOLE LOCATION)	
LATITUDE	= 39°23'57.58" (39.399326°)
LONGITUDE	= 107°42'00.50" (107.700140°)

TRI STATE LAND SURVEYING & CONSULTING

180 NORTH VERNAL AVE. - VERNAL, UTAH 84078
(435) 781-2501

DATE SURVEYED: 11-13-10	SURVEYED BY: C.D.S	SHEET 4
DATE DRAWN: 11-16-11	DRAWN BY: M.W.	
REVISED: 10-18-13 M.W.	SCALE: 1" = 1000'	OF 37