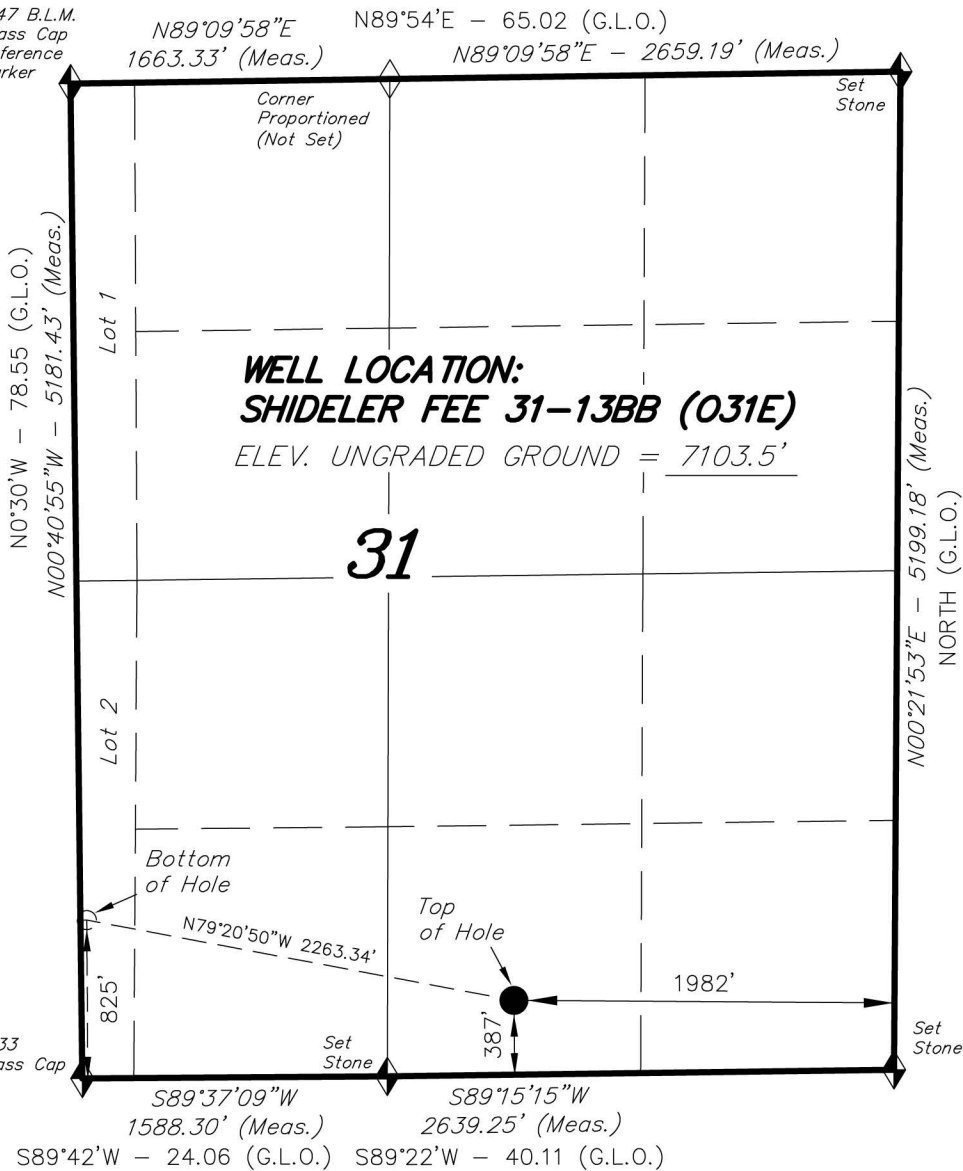


# T7S, R92W, 6th P.M.

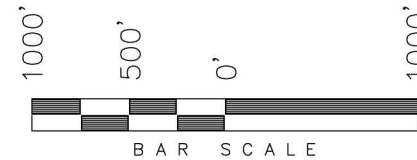
ENCANA OIL & GAS (USA) INC

1947 B.L.M.  
Brass Cap  
Reference  
Marker



WELL LOCATION, SHIDELER FEE  
31-13BB (O31E), LOCATED AS SHOWN  
IN THE SW 1/4 SE 1/4 OF SECTION 31,  
T7S, R92W, 6th P.M. GARFIELD COUNTY,  
COLORADO.

TARGET BOTTOM HOLE, SHIDELER FEE  
31-13BB (O31E), LOCATED AS SHOWN  
IN LOT 2 OF SECTION 31, T7S, R92W,  
6th P.M. GARFIELD COUNTY, COLORADO.



**NOTES:**

1. Well footages are measured at right angles to the Section Lines.
2. Bearings are based on Global Positioning Satellite observations.
3. G.P.S. Operator: C.D. Slauch, (PDOP) = 2.9
4. The Bottom of Hole footages are 825' FSL & 33' FWL.

THIS IS TO CERTIFY THAT THE ABOVE PLAT WAS PREPARED FROM FIELD NOTES OF ACTUAL SURVEYS MADE BY ME OR UNDER MY SUPERVISION. THE LOCATION HAS BEEN STAKED ON THE GROUND AS SHOWN ON THE PLAT, AND THAT THE SAID CORNERS ARE TRUE AND CORRECT TO THE BEST OF MY KNOWLEDGE AND BELIEF.

*Steve C. Slauch*  
REGISTERED LAND SURVEYOR  
REGISTRATION NO. 30125  
STATE OF COLORADO  
# 30125

◆ = SECTION CORNERS LOCATED

Basis of elevation is the Rifle 2 Triangulation Station. 39°31'53.80" N Lat. & 107°47'07.78" W Long. (NAD 83). Elevation = 5323.1' (NAVD88).

NAD 83 (SURFACE LOCATION)	
LATITUDE	= 39°23'48.66" (39.396850°)
LONGITUDE	= 107°42'21.51" (107.705975°)
NAD 83 (BOTTOM HOLE LOCATION)	
LATITUDE	= 39°23'52.81" (39.398003°)
LONGITUDE	= 107°42'49.83" (107.713842°)

**TRI STATE LAND SURVEYING & CONSULTING**

180 NORTH VERNAL AVE. - VERNAL, UTAH 84078  
(435) 781-2501

DATE SURVEYED: 11-13-10	SURVEYED BY: C.D.S	SHEET <b>16</b> OF 37
DATE DRAWN: 11-16-11	DRAWN BY: M.W.	
REVISED: L.C.S. 10-18-13	SCALE: 1" = 1000'	