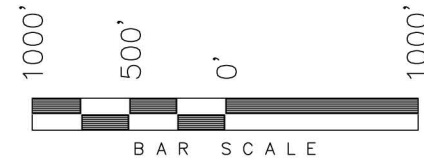
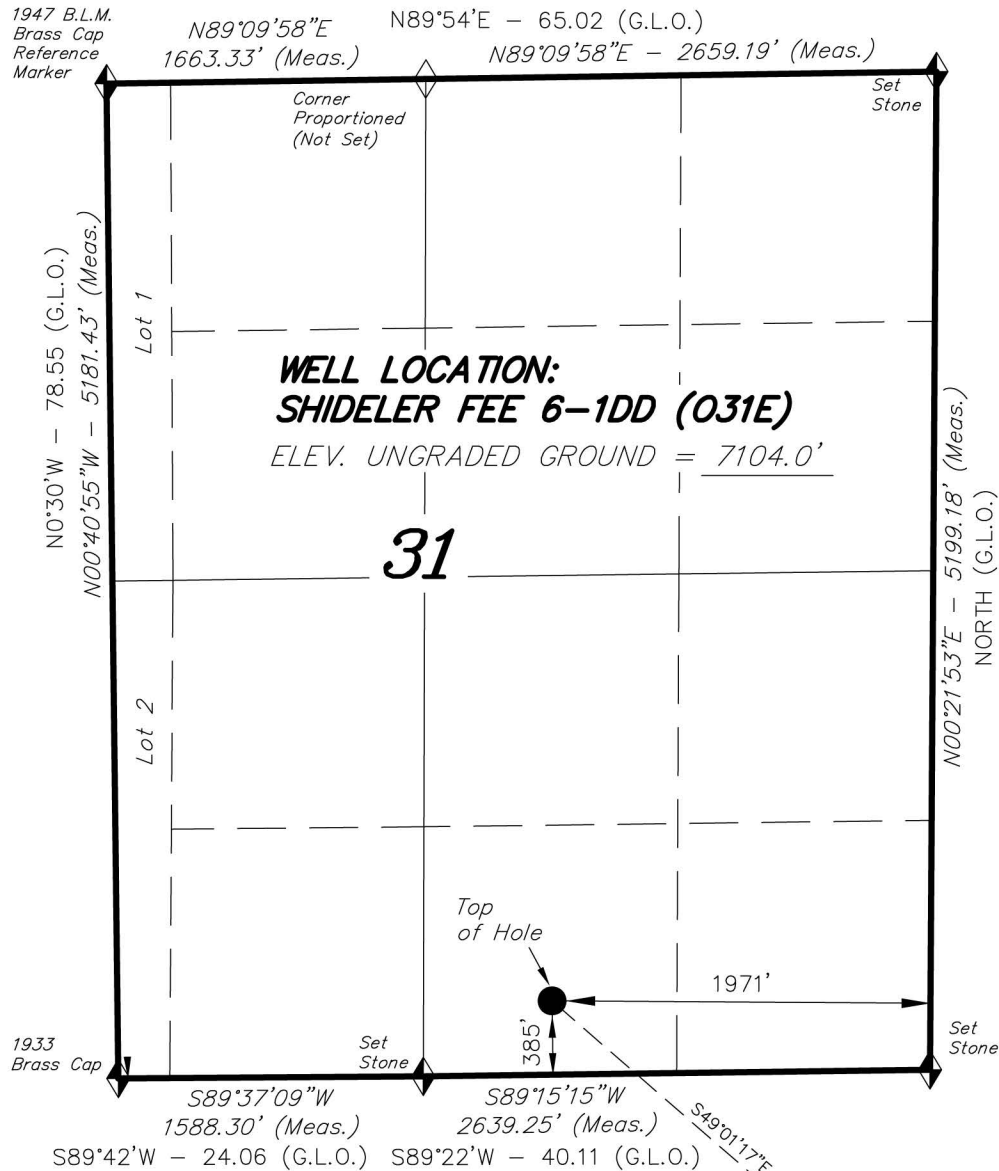


T7S, R92W, 6th P.M.

ENCANA OIL & GAS (USA) INC

WELL LOCATION, SHIDELER FEE 6-1DD (O31E), LOCATED AS SHOWN IN THE SW 1/4 SE 1/4 OF SECTION 31, T7S, R92W, 6th P.M. GARFIELD COUNTY, COLORADO.



NOTES:

1. Well footages are measured at right angles to the Section Lines.
2. Bearings are based on Global Positioning Satellite observations.
3. G.P.S. Operator: C.D. Slauch, (PDOP) = 2.9

THIS IS TO CERTIFY THAT THE ABOVE PLAT WAS PREPARED FROM FIELD NOTES OF ACTUAL SURVEYS MADE BY ME OR UNDER MY SUPERVISION, THE LOCATION HAS BEEN STAKED ON THE GROUND AS SHOWN ON THE PLAT, AND THAT THE SAID CORNERS ARE TRUE AND CORRECT TO THE BEST OF MY KNOWLEDGE AND BELIEF.

REGISTERED LAND SURVEYOR
 REGISTRATION NO. 30125
 STATE OF COLORADO

◆ = SECTION CORNERS LOCATED

Basis of elevation is the Rifle 2 Triangulation Station. 39°31'53.80" N Lat. & 107°47'07.78" W Long. (NAD 83). Elevation = 5323.1' (NAVD88).

NAD 83 (SURFACE LOCATION)	
LATITUDE	= 39°23'48.64" (39.396844°)
LONGITUDE	= 107°42'21.37" (107.705935°)

TRI STATE LAND SURVEYING & CONSULTING

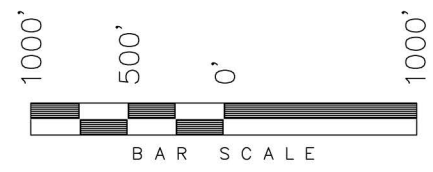
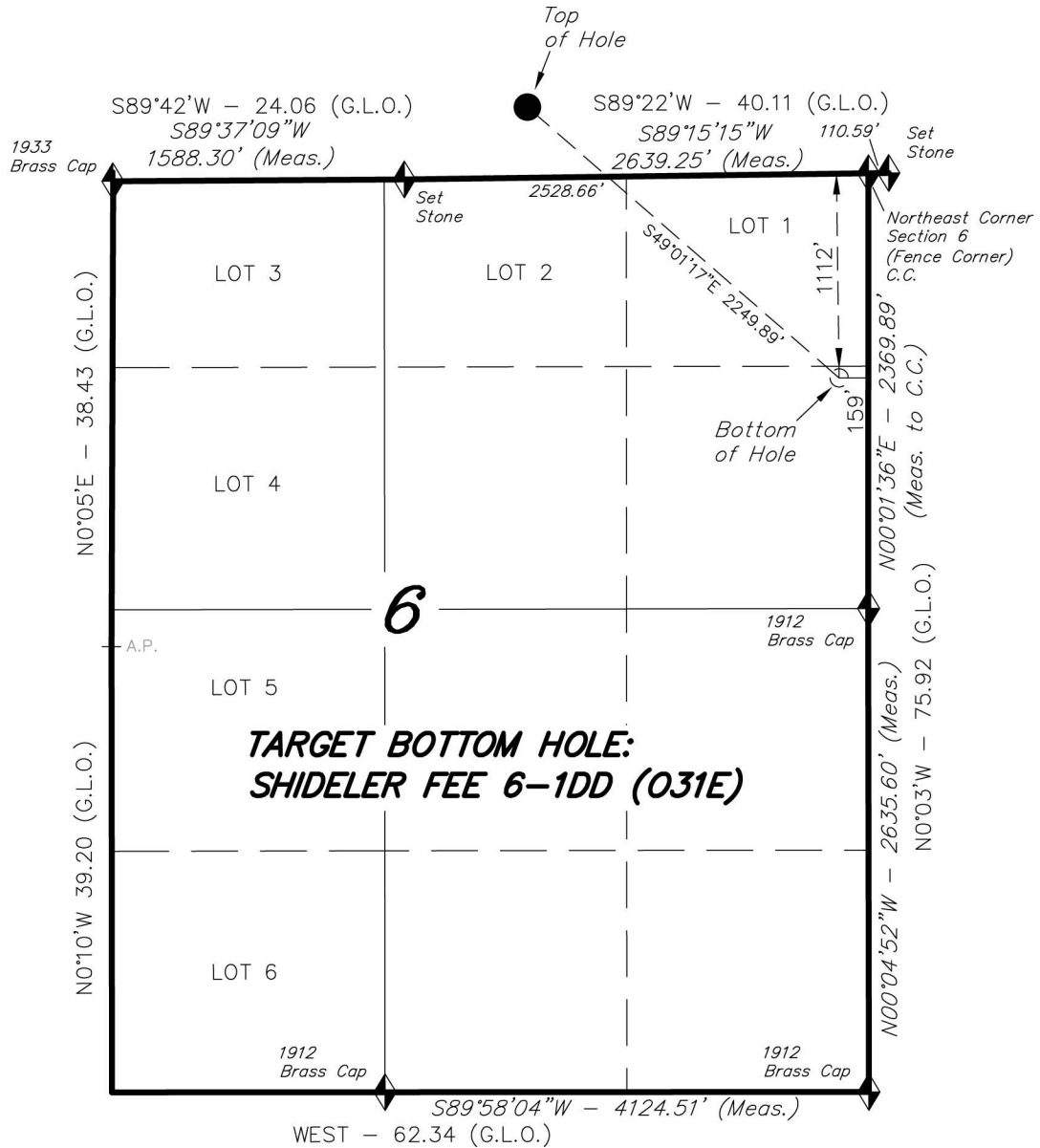
180 NORTH VERNAL AVE. - VERNAL, UTAH 84078
(435) 781-2501

DATE SURVEYED: 11-13-10	SURVEYED BY: C.D.S	SHEET 15
DATE DRAWN: 11-16-11	DRAWN BY: M.W.	
REVISED: 10-18-13 M.W.	SCALE: 1" = 1000'	OF 37

T8S, R92W, 6th P.M.

ENCANA OIL & GAS (USA) INC

TARGET BOTTOM HOLE, SHIDELER FEE 6-1DD (O31E), LOCATED AS SHOWN IN THE SE 1/4 NE 1/4 OF SECTION 6, T8S, R92W, 6th P.M. GARFIELD COUNTY, COLORADO.



- NOTES:**
1. Well footages are measured at right angles to the Section Lines.
 2. Bearings are based on Global Positioning Satellite observations.

**TARGET BOTTOM HOLE:
SHIDELER FEE 6-1DD (O31E)**

THIS IS TO CERTIFY THAT THE ABOVE PLAT WAS PREPARED FROM FIELD NOTES OF ACTUAL SURVEYS MADE BY ME OR UNDER MY SUPERVISION. THE LOCATION HAS BEEN STAKED ON THE GROUND AS SHOWN ON THE PLAT, AND THAT THE SAID CORNERS ARE TRUE AND CORRECT TO THE BEST OF MY KNOWLEDGE AND BELIEF.

Steve White
 REGISTERED LAND SURVEYOR
 REGISTRATION NO. 30125
 STATE OF COLORADO
 # 30125

◆ = SECTION CORNERS LOCATED

Basis of elevation is the Rifle 2 Triangulation Station. 39°31'53.80" N Lat. & 107°47'07.78" W Long. (NAD 83). Elevation = 5323.1' (NAVD88).

NAD 83 (BOTTOM HOLE LOCATION)	
LATITUDE	= 39°23'34.04" (39.392790°)
LONGITUDE	= 107°41'59.75" (107.699932°)

TRI STATE LAND SURVEYING & CONSULTING
 180 NORTH VERNAL AVE. - VERNAL, UTAH 84078
 (435) 781-2501

DATE SURVEYED: 11-13-10	SURVEYED BY: C.D.S	SHEET 15a OF 37
DATE DRAWN: 11-16-11	DRAWN BY: M.W.	
REVISED: 10-18-13 M.W.	SCALE: 1" = 1000'	