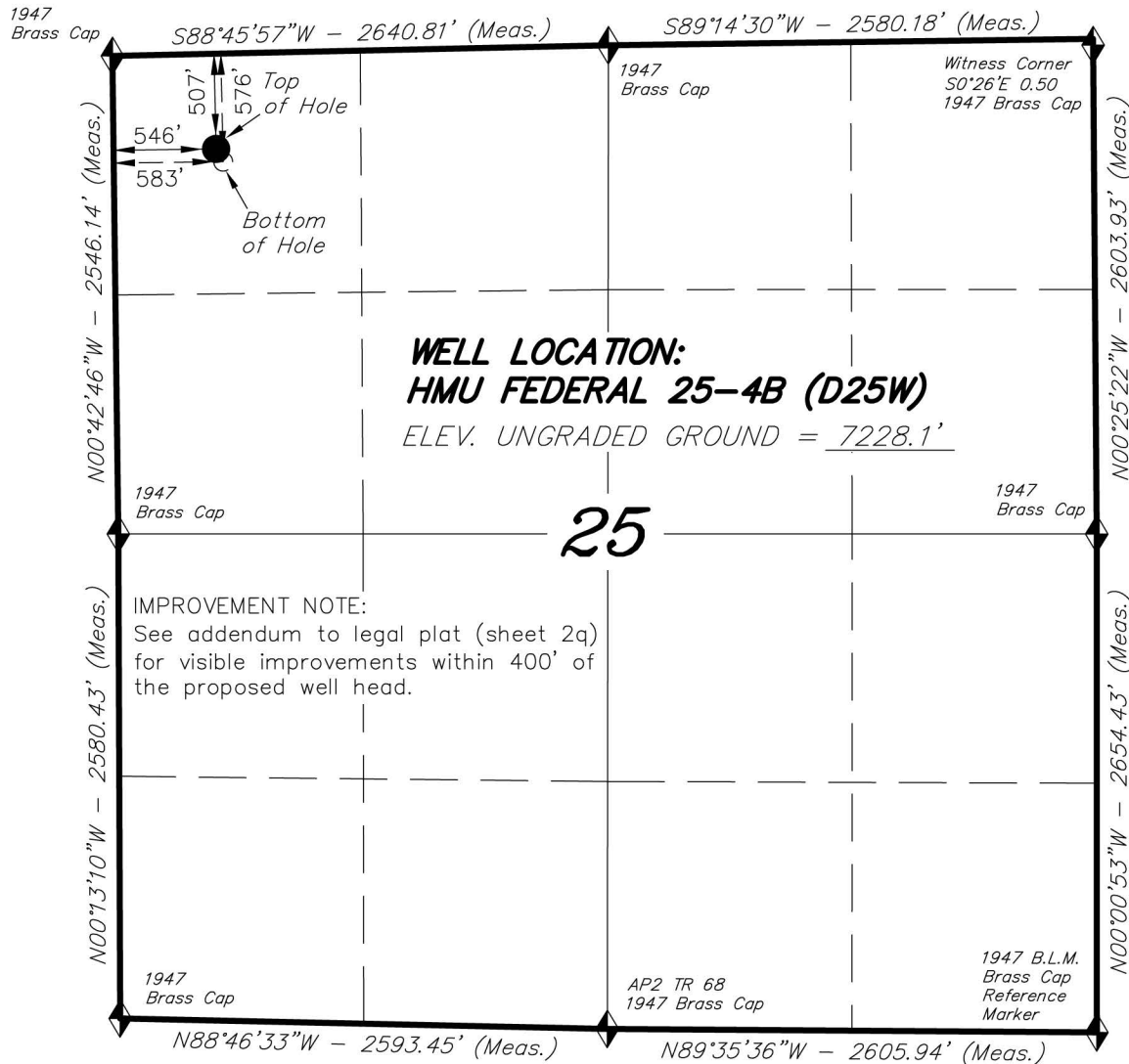
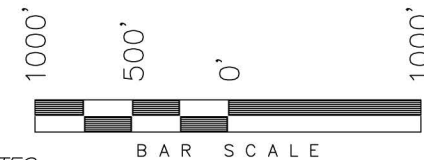


ENCANA OIL & GAS (USA) INC



WELL LOCATION, HMU FEDERAL 25-4B
(D25W), LOCATED AS SHOWN IN THE NW
1/4 NW 1/4 OF SECTION 25, T7S, R93W,
6th P.M. GARFIELD COUNTY, COLORADO.

TARGET BOTTOM HOLE, HMU FEDERAL
25-4B (D25W), LOCATED AS SHOWN IN
THE NW 1/4 NW 1/4 OF SECTION 25,
T7S, R93W, 6th P.M. GARFIELD COUNTY,
COLORADO.



NOTES:

1. Well footages are measured at right angles to the Section Lines.
2. Bearings are based on Global Positioning Satellite observations.
3. G.P.S. Operator: C.D. Slauch, (PDOP) = 3.2
4. The Bottom of Hole bears S28°55'42"E 77.85' from the Top of Hole.

THIS IS TO CERTIFY THAT THE ABOVE PLAT WAS
PREPARED FROM FIELD NOTES OF A SURVEY
MADE BY ME OR UNDER MY SUPERVISION. THE LOCATION
HAS BEEN STAKED ON THE GROUND AS SHOWN ON THE
PLAT, AND THAT THE SAME ARE TRUE AND CORRECT
TO THE BEST OF MY KNOWLEDGE AND BELIEF.

REGISTERED LAND SURVEYOR
REGISTRATION No. 330125
STATE OF COLORADO

TRI STATE LAND SURVEYING & CONSULTING

180 NORTH VERNAL AVE. - VERNAL, UTAH 84078
(435) 781-2501

DATE SURVEYED: 07-08-10	SURVEYED BY: C.D.S.	SHEET 2g OF 8
DATE DRAWN: 07-30-10	DRAWN BY: F.T.M.	
REVISED: L.C.S. 10-07-13	SCALE: 1" = 1000'	

 = SECTION CORNERS LOCATED

Basis of elevation is the Rifle 2 Triangulation Station. 39°31'53.80" N Lat. & 107°47'07.78" W Long. (NAD 83). Elevation = 5323.1' (NAVD88).

NAD 83 (SURFACE HOLE LOCATION)	
LATITUDE	= 39°25'22.38" (39.422882°)
LONGITUDE	= 107°43'50.55" (107.730707°)
NAD 83 (BOTTOM HOLE LOCATION)	
LATITUDE	= 39°25'21.70" (39.422695°)
LONGITUDE	= 107°43'50.07" (107.730574°)