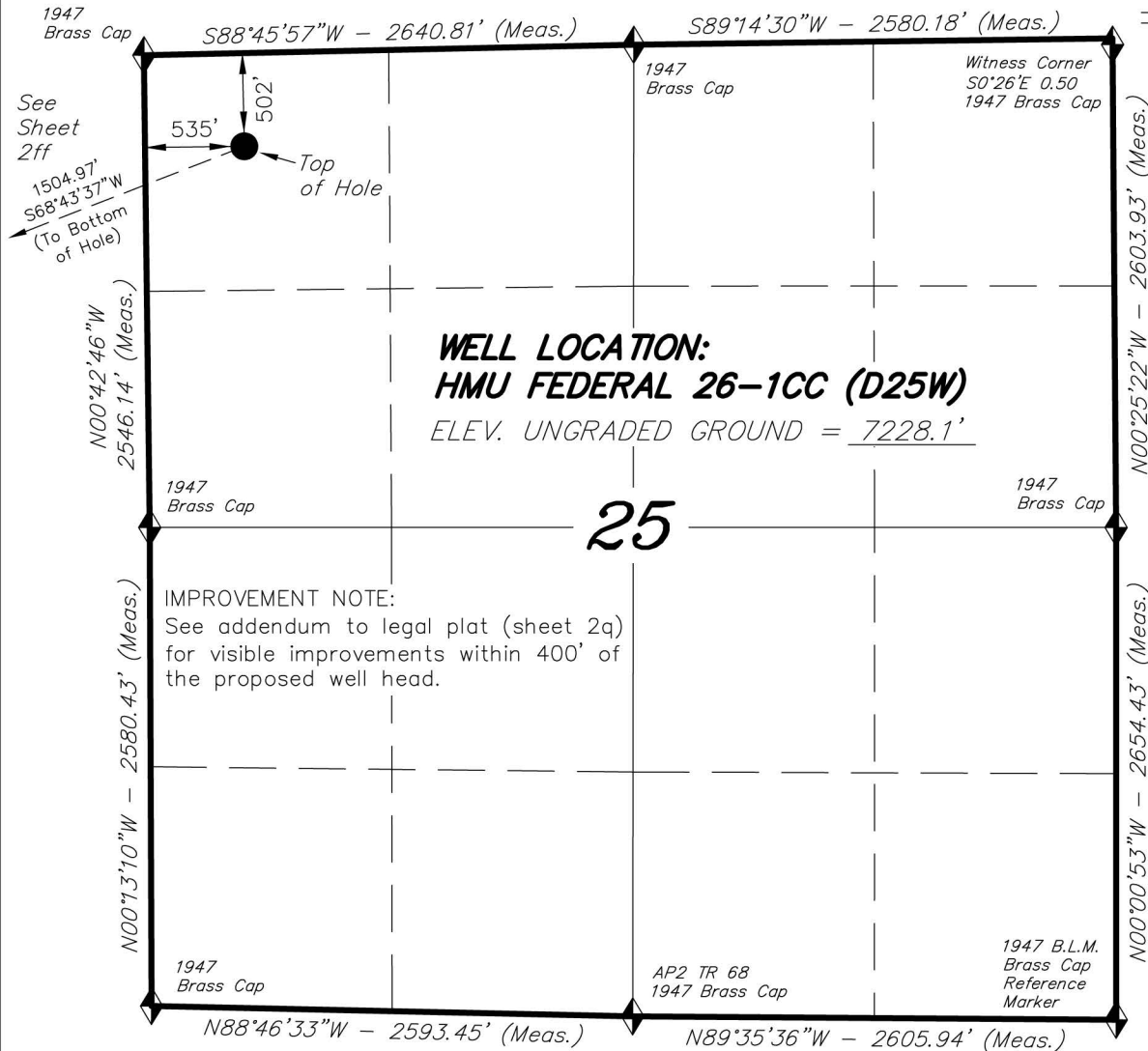
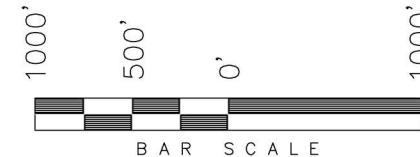


ENCANA OIL & GAS (USA) INC



WELL LOCATION, HMU FEDERAL 26-1CC
(D25W), LOCATED AS SHOWN IN THE NW
1/4 NW 1/4 OF SECTION 25, T7S, R93W,
6th P.M. GARFIELD COUNTY, COLORADO.



NOTES:

1. Well footages are measured at right angles to the Section Lines.
2. Bearings are based on Global Positioning Satellite observations.
3. G.P.S. Operator: C.D. Slauch, (PDOP) = 3.2

THIS IS TO CERTIFY THAT THE ABOVE PLAT WAS
PREPARED FROM FIELD NOTES OF A SURVEY
MADE BY ME OR UNDER MY SUPERVISION. THE LOCATION
HAS BEEN STAKED ON THE GROUND AS SHOWN ON THE
PLAT, AND THAT THE SAME ARE TRUE AND CORRECT
TO THE BEST OF MY KNOWLEDGE AND BELIEF.

REGISTERED LAND SURVEYOR
REGISTRATION No. S30125
STATE OF COLORADO

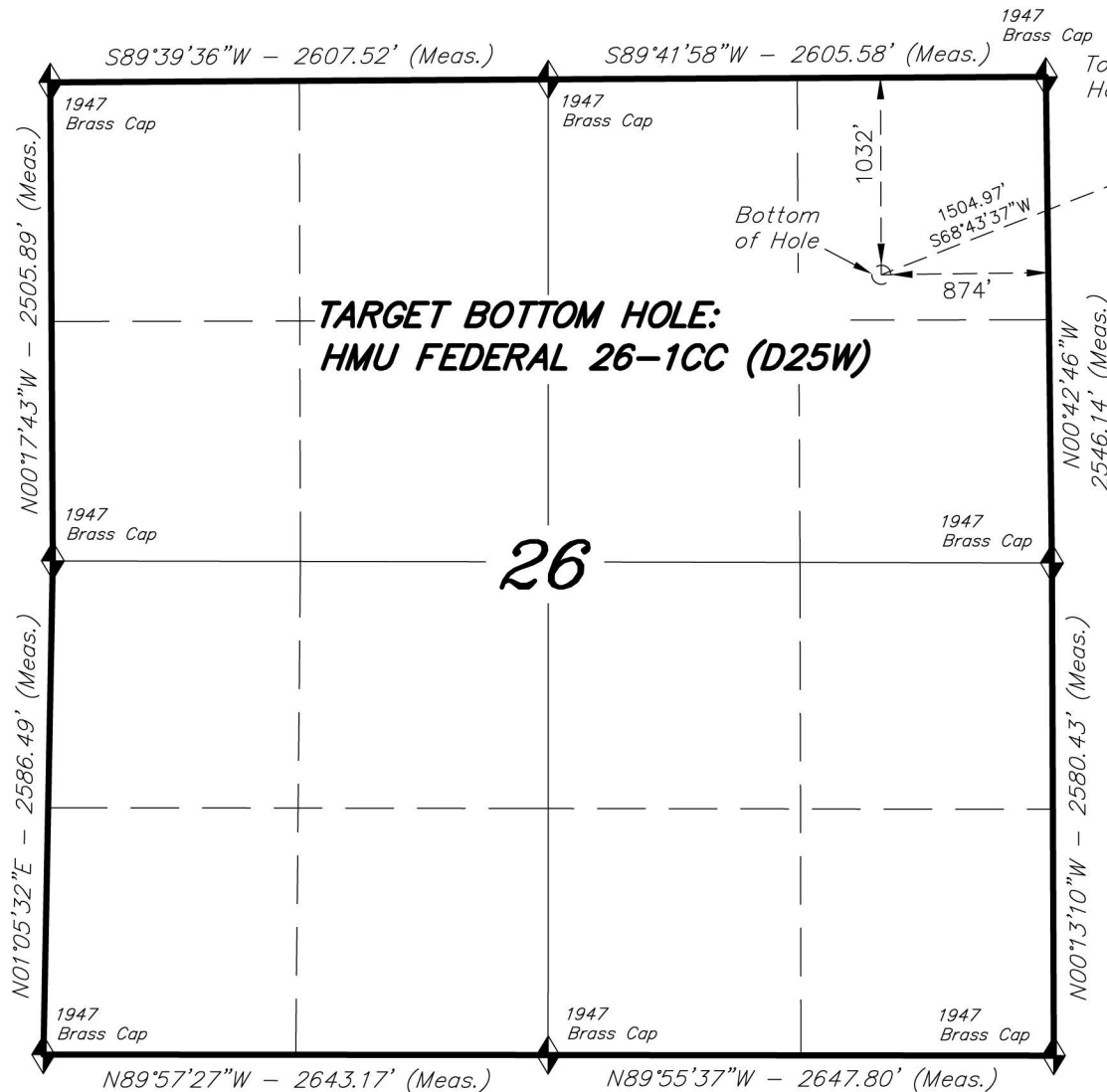
TRI STATE LAND SURVEYING & CONSULTING

180 NORTH VERNAL AVE. – VERNAL, UTAH 84078
(435) 781-2501

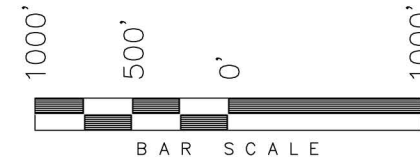
DATE SURVEYED: 07-08-10	SURVEYED BY: C.D.S.	SHEET 2f OF 8
DATE DRAWN: 07-30-10	DRAWN BY: F.T.M.	
REVISED: I.C.S. 10-07-13	SCALE: 1" = 1000'	

T7S, R93W, 6th P.M.

ENCANA OIL & GAS (USA) INC



TARGET BOTTOM HOLE, HMU FEDERAL 26-1CC (D25W), LOCATED AS SHOWN IN THE NE 1/4 NE 1/4 OF SECTION 26, T7S, R93W, 6th P.M., GARFIELD COUNTY, COLORADO.



NOTES:

1. Well footages are measured at right angles to the Section Lines.
2. Bearings are based on Global Positioning Satellite observations.



THIS IS TO CERTIFY THAT THE ABOVE PLAT WAS PREPARED FROM FIELD NOTES OF ACTUAL SURVEYS MADE BY ME OR UNDER MY SUPERVISION. THE LOCATION HAS BEEN STAKED ON THE GROUND AS SHOWN ON THE PLAT, AND THAT THE SAME ARE TRUE AND CORRECT TO THE BEST OF MY KNOWLEDGE AND BELIEF.

10-07-13
30125
REGISTERED LAND SURVEYOR
REGISTRATION No. 30125
STATE OF COLORADO
TRI STATE LAND SURVEYING & CONSULTING

◆ = SECTION CORNERS LOCATED

Basis of elevation is the Rifle 2 Triangulation Station. 39°31'53.80" N Lat. & 107°47'07.78" W Long. (NAD 83). Elevation = 5323.1' (NAVD88).

NAD 83 (BOTTOM HOLE LOCATION)	
LATITUDE	= 39°25'17.03" (39.421398°)
LONGITUDE	= 107°44'08.55" (107.735709°)

TRI STATE LAND SURVEYING & CONSULTING

180 NORTH VERNAL AVE. — VERNAL, UTAH 84078
(435) 781-2501

DATE SURVEYED: 07-08-10	SURVEYED BY: C.D.S.	SHEET 2ff OF 11
DATE DRAWN: 07-30-10	DRAWN BY: F.T.M.	
REVISED: L.C.S. 10-07-13	SCALE: 1" = 1000'	