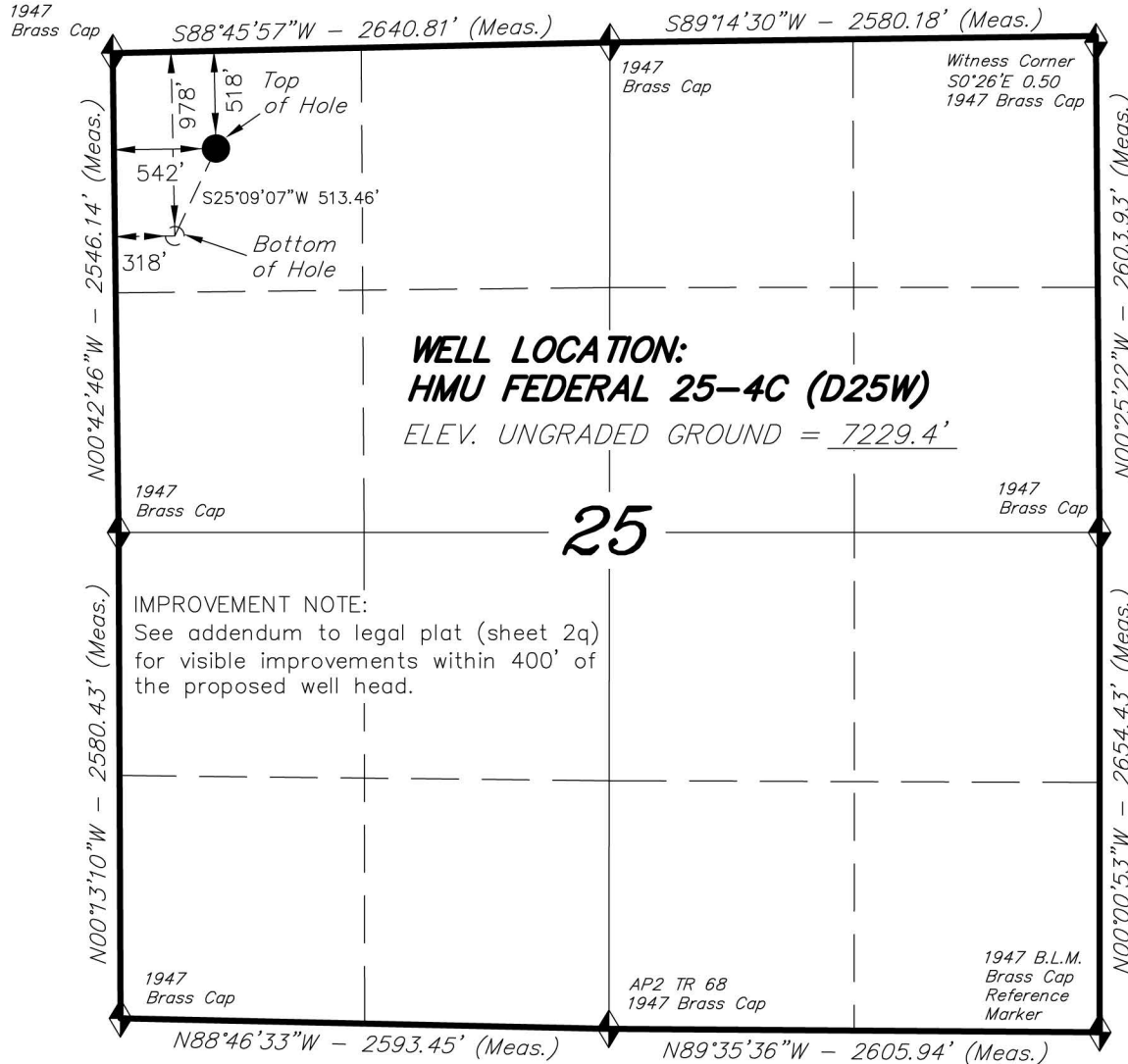


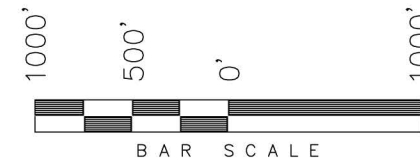
T7S, R93W, 6th P.M.

ENCANA OIL & GAS (USA) INC



WELL LOCATION, HMU FEDERAL 25-4C (D25W), LOCATED AS SHOWN IN THE NW 1/4 NW 1/4 OF SECTION 25, T7S, R93W, 6th P.M. GARFIELD COUNTY, COLORADO.

TARGET BOTTOM HOLE, HMU FEDERAL 25-4C (D25W), LOCATED AS SHOWN IN THE NW 1/4 NW 1/4 OF SECTION 25, T7S, R93W, 6th P.M. GARFIELD COUNTY, COLORADO.



NOTES:

1. Well footages are measured at right angles to the Section Lines.
2. Bearings are based on Global Positioning Satellite observations.
3. G.P.S. Operator: C.D. Slauch, (PDOP) = 3.2

THIS IS TO CERTIFY THAT THE ABOVE PLAT WAS PREPARED FROM FIELD NOTES OF SURVEYS MADE BY ME OR UNDER MY SUPERVISION. LOCATION HAS BEEN STAKED ON THE GROUND AS SHOWN ON THE PLAT, AND THAT THE SAME ARE TRUE AND CORRECT TO THE BEST OF MY KNOWLEDGE AND BELIEF.

Stanley C. Slauch
REGISTERED LAND SURVEYOR
REGISTRATION NO. 30125
STATE OF COLORADO

◆ = SECTION CORNERS LOCATED

Basis of elevation is the Rifle 2 Triangulation Station. 39°31'53.80" N Lat. & 107°47'07.78" W Long. (NAD 83). Elevation = 5323.1' (NAVD88).

NAD 83 (SURFACE HOLE LOCATION)		
LATITUDE	=	39°25'22.27" (39.422852°)
LONGITUDE	=	107°43'50.59" (107.730721°)
NAD 83 (BOTTOM HOLE LOCATION)		
LATITUDE	=	39°25'17.68" (39.421576°)
LONGITUDE	=	107°43'53.38" (107.731494°)

TRI STATE LAND SURVEYING & CONSULTING

180 NORTH VERNAL AVE. - VERNAL, UTAH 84078
(435) 781-2501

DATE SURVEYED: 07-08-10	SURVEYED BY: C.D.S.	SHEET 2h OF 8
DATE DRAWN: 07-30-10	DRAWN BY: F.T.M.	
REVISED: L.C.S. 10-07-13	SCALE: 1" = 1000'	