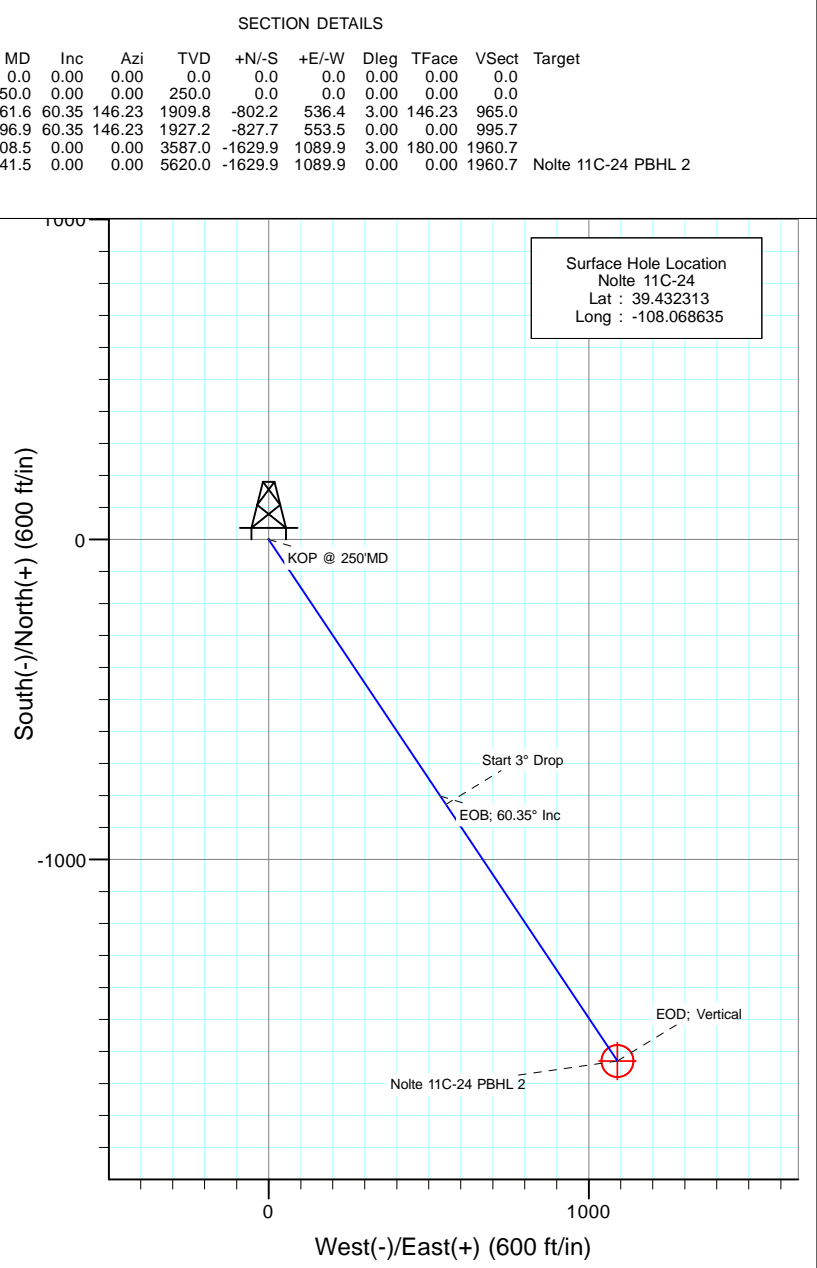
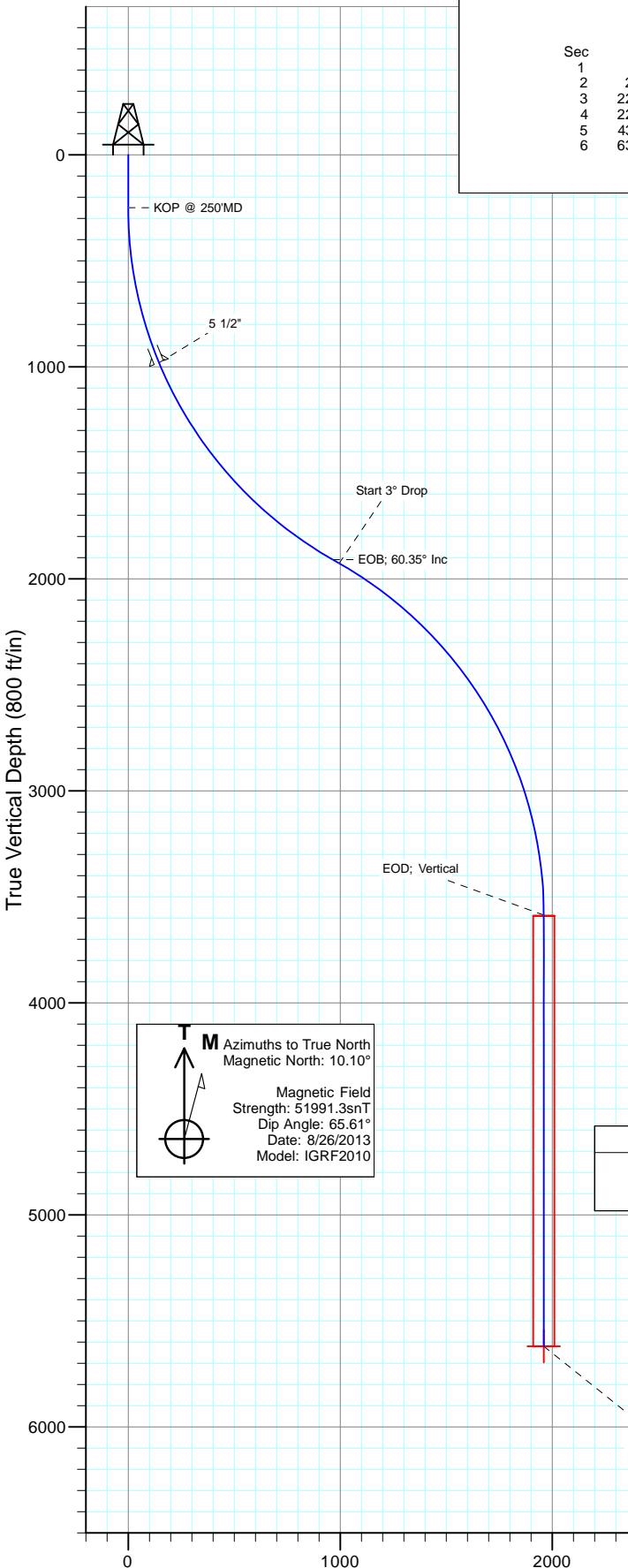


SECTION DETAILS

Sec	MD	Inc	Azi	TVD	+N/-S	+E/-W	Dleg	TFace	V Sect	Target
1	0.0	0.00	0.00	0.0	0.0	0.0	0.00	0.00	0.0	
2	250.0	0.00	0.00	250.0	0.0	0.0	0.00	0.00	0.0	
3	2261.6	60.35	146.23	1909.8	-802.2	536.4	3.00	146.23	965.0	
4	2296.9	60.35	146.23	1927.2	-827.7	553.5	0.00	0.00	995.7	
5	4308.5	0.00	0.00	3587.0	-1629.9	1089.9	3.00	180.00	1960.7	
6	6341.5	0.00	0.00	5620.0	-1629.9	1089.9	0.00	0.00	1960.7	Nolte 11C-24 PBHL 2



Surface Hole Location
 Nolte 11C-24
 Lat : 39.432313
 Long : -108.068635

M Azimuths to True North
 Magnetic North: 10.10°
 Magnetic Field
 Strength: 51991.3snT
 Dip Angle: 65.61°
 Date: 8/26/2013
 Model: IGRF2010

DESIGN TARGET DETAILS

Name	+N/-S	+E/-W	Northing	Easting	Latitude	Longitude
Nolte 11C-24 PBHL 2	-1629.9	1089.9	590935.40	1275597.88	39.427838	-108.064777

Plan #3
 Nolte 11C-24
 WELL @ 5108.1ft (Original Well Elev)
 Ground Elevation @ 5091.1
 NAD 1927 (NADCON CONUS)
 Well Nolte 11C-24, True North

FORMATION TOP DETAILS
 No formation data is available

Vertical Section at 146.23° (800 ft/in)

Cathedral Energy Services

Planning Report

Database: USA EDM 5000 Multi Users DB	Local Co-ordinate Reference: Well Nolte 11C-24
Company: Caerus Oil & Gas (NAD 27)	TVD Reference: WELL @ 5108.1ft (Original Well Elev)
Project: Garfield County, CO	MD Reference: WELL @ 5108.1ft (Original Well Elev)
Site: S14-T7S-R96W	North Reference: True
Well: Nolte 11C-24	Survey Calculation Method: Minimum Curvature
Wellbore: DD	
Design: Plan #3	

Project Garfield County, CO		
Map System: US State Plane 1927 (Exact solution)	System Datum:	Mean Sea Level
Geo Datum: NAD 1927 (NADCON CONUS)		
Map Zone: Colorado Central 502		

Site S14-T7S-R96W					
Site Position:		Northing:	592,603.28 ft	Latitude:	39.432320
From: Lat/Long		Easting:	1,274,372.48 ft	Longitude:	-108.069280
Position Uncertainty:	0.0 ft	Slot Radius:	13.200 in	Grid Convergence:	-1.62 °

Well Nolte 11C-24					
Well Position	+N/-S	0.0 ft	Northing:	592,595.46 ft	Latitude: 39.432313
	+E/-W	0.0 ft	Easting:	1,274,554.52 ft	Longitude: -108.068635
Position Uncertainty		0.0 ft	Wellhead Elevation:	ft	Ground Level: 5,091.1 ft

Wellbore DD					
Magnetics	Model Name	Sample Date	Declination	Dip Angle	Field Strength
	IGRF2010	8/26/2013	(°) 10.10	(°) 65.61	(nT) 51,991

Design Plan #3				
Audit Notes:				
Version:	Phase:	PLAN	Tie On Depth:	0.0
Vertical Section:	Depth From (TVD)	+N/-S	+E/-W	Direction
	(ft)	(ft)	(ft)	(°)
	0.0	0.0	0.0	146.23

Plan Sections										
Measured Depth (ft)	Inclination (°)	Azimuth (°)	Vertical Depth (ft)	+N/-S (ft)	+E/-W (ft)	Dogleg Rate (°/100ft)	Build Rate (°/100ft)	Turn Rate (°/100ft)	TFO (°)	Target
0.0	0.00	0.00	0.0	0.0	0.0	0.00	0.00	0.00	0.00	
250.0	0.00	0.00	250.0	0.0	0.0	0.00	0.00	0.00	0.00	
2,261.6	60.35	146.23	1,909.8	-802.2	536.4	3.00	3.00	0.00	146.23	
2,296.9	60.35	146.23	1,927.2	-827.7	553.5	0.00	0.00	0.00	0.00	
4,308.5	0.00	0.00	3,587.0	-1,629.9	1,089.9	3.00	-3.00	0.00	180.00	
6,341.5	0.00	0.00	5,620.0	-1,629.9	1,089.9	0.00	0.00	0.00	0.00	Nolte 11C-24 PBHL 2

Cathedral Energy Services

Planning Report

Database:	USA EDM 5000 Multi Users DB	Local Co-ordinate Reference:	Well Nolte 11C-24
Company:	Caerus Oil & Gas (NAD 27)	TVD Reference:	WELL @ 5108.1ft (Original Well Elev)
Project:	Garfield County, CO	MD Reference:	WELL @ 5108.1ft (Original Well Elev)
Site:	S14-T7S-R96W	North Reference:	True
Well:	Nolte 11C-24	Survey Calculation Method:	Minimum Curvature
Wellbore:	DD		
Design:	Plan #3		

Planned Survey									
Measured Depth (ft)	Inclination (°)	Azimuth (°)	Vertical Depth (ft)	+N/-S (ft)	+E/-W (ft)	Vertical Section (ft)	Dogleg Rate (°/100ft)	Build Rate (°/100ft)	Comments / Formations
0.0	0.00	0.00	0.0	0.0	0.0	0.0	0.00	0.00	
100.0	0.00	0.00	100.0	0.0	0.0	0.0	0.00	0.00	
200.0	0.00	0.00	200.0	0.0	0.0	0.0	0.00	0.00	
250.0	0.00	0.00	250.0	0.0	0.0	0.0	0.00	0.00	KOP @ 250'MD
300.0	1.50	146.23	300.0	-0.5	0.4	0.7	3.00	3.00	
400.0	4.50	146.23	399.8	-4.9	3.3	5.9	3.00	3.00	
500.0	7.50	146.23	499.3	-13.6	9.1	16.3	3.00	3.00	
600.0	10.50	146.23	598.0	-26.6	17.8	32.0	3.00	3.00	
700.0	13.50	146.23	695.8	-43.9	29.3	52.8	3.00	3.00	
800.0	16.50	146.23	792.4	-65.4	43.7	78.6	3.00	3.00	
900.0	19.50	146.23	887.5	-91.1	60.9	109.5	3.00	3.00	
1,000.0	22.50	146.23	980.9	-120.9	80.8	145.4	3.00	3.00	5 1/2"
1,100.0	25.50	146.23	1,072.2	-154.7	103.4	186.0	3.00	3.00	
1,200.0	28.50	146.23	1,161.3	-192.4	128.6	231.4	3.00	3.00	
1,300.0	31.50	146.23	1,247.9	-234.0	156.4	281.4	3.00	3.00	
1,400.0	34.50	146.23	1,331.8	-279.2	186.7	335.9	3.00	3.00	
1,500.0	37.50	146.23	1,412.6	-328.1	219.4	394.7	3.00	3.00	
1,600.0	40.50	146.23	1,490.4	-380.4	254.4	457.6	3.00	3.00	
1,700.0	43.50	146.23	1,564.7	-436.0	291.5	524.5	3.00	3.00	
1,800.0	46.50	146.23	1,635.4	-494.8	330.8	595.2	3.00	3.00	
1,900.0	49.50	146.23	1,702.3	-556.5	372.1	669.5	3.00	3.00	
2,000.0	52.50	146.23	1,765.2	-621.1	415.3	747.2	3.00	3.00	
2,100.0	55.50	146.23	1,824.0	-688.4	460.3	828.1	3.00	3.00	
2,200.0	58.50	146.23	1,878.4	-758.1	506.9	912.0	3.00	3.00	
2,261.6	60.35	146.23	1,909.8	-802.2	536.4	965.0	3.00	3.00	EOB; 60.35° Inc
2,296.9	60.35	146.23	1,927.2	-827.7	553.5	995.7	0.00	0.00	Start 3° Drop
2,300.0	60.26	146.23	1,928.8	-829.9	554.9	998.4	3.00	-3.00	
2,400.0	57.26	146.23	1,980.6	-901.0	602.5	1,083.9	3.00	-3.00	
2,500.0	54.26	146.23	2,036.9	-969.7	648.4	1,166.5	3.00	-3.00	
2,600.0	51.26	146.23	2,097.4	-1,035.9	692.7	1,246.1	3.00	-3.00	
2,700.0	48.26	146.23	2,162.0	-1,099.3	735.1	1,322.4	3.00	-3.00	
2,800.0	45.26	146.23	2,230.5	-1,159.9	775.6	1,395.3	3.00	-3.00	
2,900.0	42.26	146.23	2,302.7	-1,217.3	814.0	1,464.4	3.00	-3.00	
3,000.0	39.26	146.23	2,378.5	-1,271.6	850.3	1,529.7	3.00	-3.00	
3,100.0	36.26	146.23	2,457.5	-1,322.5	884.3	1,590.9	3.00	-3.00	
3,200.0	33.26	146.23	2,539.7	-1,369.9	916.0	1,647.9	3.00	-3.00	
3,300.0	30.26	146.23	2,624.7	-1,413.6	945.3	1,700.5	3.00	-3.00	
3,400.0	27.26	146.23	2,712.3	-1,453.6	972.0	1,748.6	3.00	-3.00	
3,500.0	24.26	146.23	2,802.4	-1,489.7	996.1	1,792.1	3.00	-3.00	
3,600.0	21.26	146.23	2,894.6	-1,521.9	1,017.6	1,830.8	3.00	-3.00	
3,700.0	18.26	146.23	2,988.7	-1,550.0	1,036.4	1,864.6	3.00	-3.00	
3,800.0	15.26	146.23	3,084.4	-1,573.9	1,052.5	1,893.4	3.00	-3.00	
3,900.0	12.26	146.23	3,181.6	-1,593.7	1,065.7	1,917.2	3.00	-3.00	
4,000.0	9.26	146.23	3,279.8	-1,609.2	1,076.0	1,935.8	3.00	-3.00	
4,100.0	6.26	146.23	3,378.9	-1,620.4	1,083.5	1,949.3	3.00	-3.00	
4,200.0	3.26	146.23	3,478.5	-1,627.3	1,088.2	1,957.6	3.00	-3.00	
4,308.5	0.00	0.00	3,587.0	-1,629.9	1,089.9	1,960.7	3.00	-3.00	EOB; Vertical
4,400.0	0.00	0.00	3,678.5	-1,629.9	1,089.9	1,960.7	0.00	0.00	
4,500.0	0.00	0.00	3,778.5	-1,629.9	1,089.9	1,960.7	0.00	0.00	
4,600.0	0.00	0.00	3,878.5	-1,629.9	1,089.9	1,960.7	0.00	0.00	
4,700.0	0.00	0.00	3,978.5	-1,629.9	1,089.9	1,960.7	0.00	0.00	
4,800.0	0.00	0.00	4,078.5	-1,629.9	1,089.9	1,960.7	0.00	0.00	

Cathedral Energy Services

Planning Report

Database: USA EDM 5000 Multi Users DB
Company: Caerus Oil & Gas (NAD 27)
Project: Garfield County, CO
Site: S14-T7S-R96W
Well: Nolte 11C-24
Wellbore: DD
Design: Plan #3

Local Co-ordinate Reference: Well Nolte 11C-24
TVD Reference: WELL @ 5108.1ft (Original Well Elev)
MD Reference: WELL @ 5108.1ft (Original Well Elev)
North Reference: True
Survey Calculation Method: Minimum Curvature

Planned Survey

Measured Depth (ft)	Inclination (°)	Azimuth (°)	Vertical Depth (ft)	+N/-S (ft)	+E/-W (ft)	Vertical Section (ft)	Dogleg Rate (°/100ft)	Build Rate (°/100ft)	Comments / Formations
4,900.0	0.00	0.00	4,178.5	-1,629.9	1,089.9	1,960.7	0.00	0.00	
5,000.0	0.00	0.00	4,278.5	-1,629.9	1,089.9	1,960.7	0.00	0.00	
5,100.0	0.00	0.00	4,378.5	-1,629.9	1,089.9	1,960.7	0.00	0.00	
5,200.0	0.00	0.00	4,478.5	-1,629.9	1,089.9	1,960.7	0.00	0.00	
5,300.0	0.00	0.00	4,578.5	-1,629.9	1,089.9	1,960.7	0.00	0.00	
5,400.0	0.00	0.00	4,678.5	-1,629.9	1,089.9	1,960.7	0.00	0.00	
5,500.0	0.00	0.00	4,778.5	-1,629.9	1,089.9	1,960.7	0.00	0.00	
5,600.0	0.00	0.00	4,878.5	-1,629.9	1,089.9	1,960.7	0.00	0.00	
5,700.0	0.00	0.00	4,978.5	-1,629.9	1,089.9	1,960.7	0.00	0.00	
5,800.0	0.00	0.00	5,078.5	-1,629.9	1,089.9	1,960.7	0.00	0.00	
5,900.0	0.00	0.00	5,178.5	-1,629.9	1,089.9	1,960.7	0.00	0.00	
6,000.0	0.00	0.00	5,278.5	-1,629.9	1,089.9	1,960.7	0.00	0.00	
6,100.0	0.00	0.00	5,378.5	-1,629.9	1,089.9	1,960.7	0.00	0.00	
6,200.0	0.00	0.00	5,478.5	-1,629.9	1,089.9	1,960.7	0.00	0.00	
6,300.0	0.00	0.00	5,578.5	-1,629.9	1,089.9	1,960.7	0.00	0.00	
6,341.5	0.00	0.00	5,620.0	-1,629.9	1,089.9	1,960.7	0.00	0.00	PBHL @ 6,341' MD

Targets

Target Name - hit/miss target - Shape	Dip Angle (°)	Dip Dir. (°)	TVD (ft)	+N/-S (ft)	+E/-W (ft)	Northing (ft)	Easting (ft)	Latitude	Longitude
Nolte 11C-24 PBHL 2 - plan hits target center - Circle (radius 50.0)	0.00	0.00	5,620.0	-1,629.9	1,089.9	590,935.40	1,275,597.88	39.427838	-108.064777

Casing Points

Measured Depth (ft)	Vertical Depth (ft)	Name	Casing Diameter (in)	Hole Diameter (in)
1,000.0	980.9	5 1/2"	5.500	6.000

Plan Annotations

Measured Depth (ft)	Vertical Depth (ft)	Local Coordinates		Comment
		+N/-S (ft)	+E/-W (ft)	
250.0	250.0	0.0	0.0	KOP @ 250'MD
2,261.6	1,909.8	-802.2	536.4	EOB; 60.35° Inc
2,296.9	1,927.2	-827.7	553.5	Start 3° Drop
4,308.5	3,587.0	-1,629.9	1,089.9	EOD; Vertical
6,341.5	5,620.0	-1,629.9	1,089.9	PBHL @ 6,341' MD

Caerus Oil & Gas (NAD 27)

Garfield County, CO

S14-T7S-R96W

Nolte 11C-24

DD

Plan #3

Anticollision Report

09 September, 2013

Cathedral Energy Services

Anticollision Report

Company:	Caerus Oil & Gas (NAD 27)	Local Co-ordinate Reference:	Well Nolte 11C-24
Project:	Garfield County, CO	TVD Reference:	WELL @ 5108.1ft (Original Well Elev)
Reference Site:	S14-T7S-R96W	MD Reference:	WELL @ 5108.1ft (Original Well Elev)
Site Error:	0.0ft	North Reference:	True
Reference Well:	Nolte 11C-24	Survey Calculation Method:	Minimum Curvature
Well Error:	0.0ft	Output errors are at	2.00 sigma
Reference Wellbore	DD	Database:	USA EDM 5000 Multi Users DB
Reference Design:	Plan #3	Offset TVD Reference:	Offset Datum

Reference	Plan #3		
Filter type:	NO GLOBAL FILTER: Using user defined selection & filtering criteria		
Interpolation Method:	MD Interval 100.0ft	Error Model:	ISCWSA
Depth Range:	Unlimited	Scan Method:	Closest Approach 3D
Results Limited by:	Maximum center-center distance of 1,356.1ft	Error Surface:	Elliptical Conic
Warning Levels Evaluated at:	2.00 Sigma		

Survey Tool Program		Date	8/29/2013		
From (ft)	To (ft)	Survey (Wellbore)	Tool Name	Description	
0.0	6,341.5	Plan #3 (DD)	MWD	Geolink MWD	

Cathedral Energy Services

Anticollision Report

Company:	Caerus Oil & Gas (NAD 27)	Local Co-ordinate Reference:	Well Nolte 11C-24
Project:	Garfield County, CO	TVD Reference:	WELL @ 5108.1ft (Original Well Elev)
Reference Site:	S14-T7S-R96W	MD Reference:	WELL @ 5108.1ft (Original Well Elev)
Site Error:	0.0ft	North Reference:	True
Reference Well:	Nolte 11C-24	Survey Calculation Method:	Minimum Curvature
Well Error:	0.0ft	Output errors are at	2.00 sigma
Reference Wellbore	DD	Database:	USA EDM 5000 Multi Users DB
Reference Design:	Plan #3	Offset TVD Reference:	Offset Datum

Summary

Site Name	Reference Measured Depth (ft)	Offset Measured Depth (ft)	Distance Between Centres (ft)	Distance Between Ellipses (ft)	Separation Factor	Warning
S14-T7S-R96W						
Nolte 11A-24 - DD - Plan #3	200.0	209.7	16.0	15.4	25.045	CC
Nolte 11A-24 - DD - Plan #3	222.3	232.0	16.0	15.3	22.362	ES
Nolte 11A-24 - DD - Plan #3	1,500.0	1,513.3	105.1	90.2	7.034	SF
Nolte 11B-24 - DD - Plan #3	301.7	311.5	7.4	6.4	7.375	CC, ES
Nolte 11B-24 - DD - Plan #3	2,000.0	1,992.4	77.7	48.4	2.651	SF
Nolte 13A-13 - DD - Plan #3	163.1	172.8	64.8	64.2	127.079	CC
Nolte 13A-13 - DD - Plan #3	200.0	209.4	64.8	64.1	101.489	ES
Nolte 13A-13 - DD - Plan #3	500.0	495.7	98.4	96.7	57.216	SF
Nolte 13B-13 - DD - Plan #3	200.0	209.7	56.9	56.2	89.099	CC
Nolte 13B-13 - DD - Plan #3	218.5	228.2	56.9	56.2	80.962	ES
Nolte 13B-13 - DD - Plan #3	500.0	500.0	83.3	81.6	48.266	SF
Nolte 13C-13 - DD - Plan #3	163.2	172.7	64.0	63.5	125.693	CC
Nolte 13C-13 - DD - Plan #3	200.0	209.2	64.0	63.4	100.406	ES
Nolte 13C-13 - DD - Plan #3	600.0	588.4	119.7	117.5	54.275	SF
Nolte 13D-13 - DD - Plan #3	200.0	209.7	56.0	55.3	87.776	CC
Nolte 13D-13 - DD - Plan #3	239.2	248.9	56.1	55.3	72.370	ES
Nolte 13D-13 - DD - Plan #3	500.0	503.1	74.0	72.2	42.373	SF
Nolte 14A-13 - DD - Plan #3	200.0	209.7	48.0	47.3	75.234	CC
Nolte 14A-13 - DD - Plan #3	228.5	238.2	48.0	47.3	65.151	ES
Nolte 14A-13 - DD - Plan #3	600.0	604.3	73.9	71.8	34.102	SF
Nolte 14B-13 - DD - Plan #3	200.0	209.7	40.0	39.3	62.681	CC
Nolte 14B-13 - DD - Plan #3	228.6	238.3	40.0	39.3	54.261	ES
Nolte 14B-13 - DD - Plan #3	500.0	509.0	49.9	48.2	28.973	SF
Nolte 14C-13 - DD - Plan #3	200.0	209.7	32.5	31.8	50.895	CC
Nolte 14C-13 - DD - Plan #3	228.8	238.5	32.5	31.8	44.041	ES
Nolte 14C-13 - DD - Plan #3	500.0	509.0	42.9	41.1	24.931	SF
Nolte 14D-13 - DD - Plan #3	200.0	209.7	24.0	23.4	37.596	CC
Nolte 14D-13 - DD - Plan #3	229.1	238.8	24.0	23.3	32.501	ES
Nolte 14D-13 - DD - Plan #3	1,400.0	1,414.2	166.1	155.3	15.335	SF
Nolte 43A-14 - DD - Plan #3	200.0	209.7	49.0	48.4	76.765	CC
Nolte 43A-14 - DD - Plan #3	237.5	247.2	49.1	48.4	63.855	ES
Nolte 43A-14 - DD - Plan #3	400.0	406.7	55.9	54.5	41.689	SF
Nolte 43B-14 - DD - Plan #3	200.0	209.7	41.2	40.6	64.547	CC
Nolte 43B-14 - DD - Plan #3	228.2	237.9	41.3	40.6	56.021	ES
Nolte 43B-14 - DD - Plan #3	400.0	408.2	46.3	44.9	34.494	SF
Nolte 43C-14 - DD - Plan #3	200.0	209.7	33.5	32.9	52.481	CC
Nolte 43C-14 - DD - Plan #3	228.2	237.9	33.6	32.9	45.572	ES
Nolte 43C-14 - DD - Plan #3	400.0	409.4	38.0	36.7	28.315	SF
Nolte 44A-14 - DD - Plan #3	200.0	209.7	26.0	25.4	40.686	CC
Nolte 44A-14 - DD - Plan #3	228.2	237.9	26.1	25.3	35.366	ES
Nolte 44A-14 - DD - Plan #3	400.0	409.5	30.8	29.5	22.987	SF
Nolte 44B-14 - DD - Plan #3	200.0	209.7	18.9	18.2	29.514	CC
Nolte 44B-14 - DD - Plan #3	228.1	237.8	19.0	18.2	25.710	ES
Nolte 44B-14 - DD - Plan #3	400.0	409.5	24.2	22.8	18.066	SF
Nolte 44C-14 - DD - Plan #3	200.0	209.7	12.8	12.2	20.027	CC, ES
Nolte 44C-14 - DD - Plan #3	300.0	309.7	13.4	12.5	13.610	SF
Nolte SWD 1-14 - DD - Plan #3	200.0	209.7	10.0	9.4	15.644	CC
Nolte SWD 1-14 - DD - Plan #3	228.3	238.0	10.1	9.4	13.675	ES
Nolte SWD 1-14 - DD - Plan #3	300.0	309.7	10.6	9.6	10.706	SF

CC - Min centre to center distance or convergent point, SF - min separation factor, ES - min ellipse separation

Cathedral Energy Services

Anticollision Report

Company:	Caerus Oil & Gas (NAD 27)	Local Co-ordinate Reference:	Well Nolte 11C-24
Project:	Garfield County, CO	TVD Reference:	WELL @ 5108.1ft (Original Well Elev)
Reference Site:	S14-T7S-R96W	MD Reference:	WELL @ 5108.1ft (Original Well Elev)
Site Error:	0.0ft	North Reference:	True
Reference Well:	Nolte 11C-24	Survey Calculation Method:	Minimum Curvature
Well Error:	0.0ft	Output errors are at	2.00 sigma
Reference Wellbore	DD	Database:	USA EDM 5000 Multi Users DB
Reference Design:	Plan #3	Offset TVD Reference:	Offset Datum

Offset Design													Offset Site Error:	0.0 ft	
Survey Program: 0-MWD													Offset Well Error:		0.0 ft
Reference		Offset		Semi Major Axis			Distance			Total	Separation	Warning			
Measured Depth (ft)	Vertical Depth (ft)	Measured Depth (ft)	Vertical Depth (ft)	Reference (ft)	Offset (ft)	Highside Toolface (°)	Offset Wellbore Centre +N/-S (ft)	+E/-W (ft)	Between Centres (ft)	Between Ellipses (ft)	Uncertainty Axis	Factor			
0.0	0.0	9.7	9.7	0.0	0.0	27.57	14.2	7.4	16.0						
100.0	100.0	109.7	109.7	0.1	0.1	27.57	14.2	7.4	16.0	15.7	0.29	55.255			
200.0	200.0	209.7	209.7	0.3	0.3	27.57	14.2	7.4	16.0	15.4	0.64	25.045	CC		
222.3	222.3	232.0	232.0	0.4	0.4	-118.86	14.2	7.4	16.0	15.3	0.72	22.362	ES		
300.0	300.0	309.7	309.7	0.5	0.5	-120.59	14.2	7.4	16.3	15.3	0.99	16.500			
400.0	399.8	410.0	409.9	0.7	0.7	-125.39	12.0	9.7	18.1	16.7	1.36	13.318			
500.0	499.3	510.4	510.0	0.9	0.9	-127.51	6.2	15.8	20.9	19.1	1.78	11.734			
600.0	598.0	610.8	609.4	1.2	1.2	-127.59	-3.2	25.7	24.8	22.5	2.31	10.732			
700.0	695.8	711.3	708.1	1.6	1.5	-126.39	-16.2	39.4	29.6	26.6	2.97	9.955			
800.0	792.4	811.8	805.7	2.1	2.0	-124.54	-32.7	56.9	35.4	31.6	3.81	9.293			
900.0	887.5	912.3	901.8	2.7	2.5	-122.42	-52.7	78.0	42.2	37.4	4.84	8.727			
1,000.0	980.9	1,012.8	996.3	3.4	3.2	-120.26	-76.2	102.8	50.1	44.0	6.07	8.254			
1,100.0	1,072.2	1,113.2	1,088.8	4.1	3.9	-118.18	-103.1	131.2	59.0	51.5	7.50	7.866			
1,200.0	1,161.3	1,213.6	1,179.1	5.0	4.7	-116.23	-133.2	163.0	68.9	59.8	9.13	7.549			
1,300.0	1,247.9	1,313.9	1,267.0	5.9	5.7	-114.44	-166.6	198.3	79.8	68.9	10.95	7.292			
1,400.0	1,331.8	1,414.2	1,352.1	6.9	6.7	-112.79	-203.0	236.7	91.8	78.8	12.95	7.087			
1,500.0	1,412.6	1,513.3	1,434.7	8.0	7.7	-112.64	-240.6	276.4	105.1	90.2	14.95	7.034	SF		
1,600.0	1,490.4	1,611.9	1,517.0	9.2	8.7	-114.69	-278.0	315.9	120.6	103.8	16.82	7.171			
1,700.0	1,564.7	1,709.9	1,598.8	10.5	9.7	-118.07	-315.2	355.1	138.7	120.2	18.51	7.491			
1,800.0	1,635.4	1,806.9	1,679.7	11.9	10.7	-122.08	-352.0	394.0	159.9	140.0	19.97	8.007			
1,900.0	1,702.3	1,902.7	1,759.6	13.3	11.7	-126.26	-388.3	432.3	184.9	163.7	21.18	8.729			
2,000.0	1,765.2	1,997.0	1,838.2	14.8	12.7	-130.29	-424.0	470.1	214.1	192.0	22.16	9.662			
2,100.0	1,824.0	2,089.5	1,915.4	16.4	13.7	-133.99	-459.1	507.1	247.9	224.9	22.95	10.800			
2,200.0	1,878.4	2,180.0	1,990.9	18.0	14.6	-137.27	-493.5	543.4	286.2	262.6	23.60	12.131			
2,300.0	1,928.8	2,268.5	2,064.7	19.7	15.6	-140.46	-527.0	578.8	329.0	305.0	24.04	13.685			
2,400.0	1,980.6	2,357.7	2,139.2	21.3	16.5	-144.05	-560.8	614.5	371.5	347.2	24.23	15.331			
2,500.0	2,036.9	2,449.1	2,215.4	22.8	17.4	-146.52	-595.5	651.1	410.5	385.8	24.70	16.623			
2,600.0	2,097.4	2,542.4	2,293.2	24.3	18.4	-148.19	-630.9	688.4	445.7	420.3	25.41	17.544			
2,700.0	2,162.0	2,637.3	2,372.4	25.7	19.4	-149.27	-666.9	726.5	476.8	450.5	26.33	18.107			
2,800.0	2,230.5	2,733.6	2,452.8	27.1	20.4	-149.88	-703.4	765.0	503.6	476.2	27.46	18.338			
2,900.0	2,302.7	2,831.1	2,534.0	28.4	21.5	-150.10	-740.3	804.0	526.1	497.3	28.78	18.276			
3,000.0	2,378.5	2,917.8	2,606.8	29.5	22.3	-150.09	-772.8	838.3	544.7	514.6	30.12	18.086			
3,100.0	2,457.5	3,000.0	2,677.5	30.6	23.1	-150.08	-801.6	868.7	562.0	530.6	31.34	17.933			
3,200.0	2,539.7	3,079.0	2,747.2	31.6	23.7	-150.09	-827.3	895.8	577.9	545.4	32.43	17.817			
3,300.0	2,624.7	3,159.4	2,819.5	32.6	24.4	-150.09	-851.4	921.2	592.4	559.0	33.46	17.708			
3,400.0	2,712.3	3,239.7	2,893.1	33.4	24.9	-150.09	-873.3	944.4	605.7	571.3	34.39	17.610			
3,500.0	2,802.4	3,319.8	2,967.9	34.2	25.4	-150.09	-893.0	965.2	617.5	582.3	35.24	17.523			
3,600.0	2,894.6	3,400.0	3,044.0	34.8	25.9	-150.09	-910.6	983.8	627.9	591.9	36.00	17.444			
3,700.0	2,988.7	3,479.7	3,120.5	35.4	26.2	-150.08	-925.9	1,000.0	636.9	600.3	36.65	17.379			
3,800.0	3,084.4	3,559.6	3,198.1	35.9	26.6	-150.07	-939.0	1,013.8	644.5	607.3	37.21	17.319			
3,900.0	3,181.6	3,639.4	3,276.3	36.3	26.8	-150.06	-949.9	1,025.3	650.7	613.0	37.69	17.264			
4,000.0	3,279.8	3,719.2	3,355.1	36.6	27.0	-150.04	-958.5	1,034.3	655.4	617.3	38.08	17.212			
4,100.0	3,378.9	3,800.0	3,435.3	36.8	27.2	-150.01	-964.9	1,041.1	658.6	620.2	38.38	17.161			
4,200.0	3,478.5	3,878.7	3,513.9	36.9	27.3	-149.98	-968.9	1,045.3	660.4	621.8	38.57	17.119			
4,300.0	3,578.5	3,958.5	3,593.6	36.9	27.3	-149.94	-970.6	1,047.2	660.7	622.0	38.69	17.074			
4,358.6	3,637.1	4,011.7	3,646.8	37.0	27.3	-149.94	-970.7	1,047.2	660.7	621.9	38.76	17.045			
4,400.0	3,678.5	4,053.1	3,688.2	37.0	27.4	-3.70	-970.7	1,047.2	660.6	621.7	38.82	17.015			
4,500.0	3,778.5	4,153.1	3,788.2	37.0	27.4	-3.70	-970.7	1,047.2	660.6	621.6	38.95	16.957			
4,600.0	3,878.5	4,253.1	3,888.2	37.0	27.5	-3.70	-970.7	1,047.2	660.6	621.5	39.09	16.898			
4,700.0	3,978.5	4,353.1	3,988.2	37.1	27.5	-3.70	-970.7	1,047.2	660.6	621.3	39.23	16.838			
4,800.0	4,078.5	4,453.1	4,088.2	37.1	27.5	-3.70	-970.7	1,047.2	660.6	621.2	39.37	16.778			

CC - Min centre to center distance or convergent point, SF - min separation factor, ES - min ellipse separation

Cathedral Energy Services

Anticollision Report

Company:	Caerus Oil & Gas (NAD 27)	Local Co-ordinate Reference:	Well Nolte 11C-24
Project:	Garfield County, CO	TVD Reference:	WELL @ 5108.1ft (Original Well Elev)
Reference Site:	S14-T7S-R96W	MD Reference:	WELL @ 5108.1ft (Original Well Elev)
Site Error:	0.0ft	North Reference:	True
Reference Well:	Nolte 11C-24	Survey Calculation Method:	Minimum Curvature
Well Error:	0.0ft	Output errors are at	2.00 sigma
Reference Wellbore	DD	Database:	USA EDM 5000 Multi Users DB
Reference Design:	Plan #3	Offset TVD Reference:	Offset Datum

Offset Design S14-T7S-R96W - Nolte 11A-24 - DD - Plan #3													Offset Site Error:	0.0 ft
Survey Program: 0-MWD													Offset Well Error:	0.0 ft
Reference		Offset		Semi Major Axis			Distance						Warning	
Measured Depth (ft)	Vertical Depth (ft)	Measured Depth (ft)	Vertical Depth (ft)	Reference (ft)	Offset (ft)	Highside Toolface (°)	Offset Wellbore Centre +N/-S (ft)	+E/-W (ft)	Between Centres (ft)	Between Ellipses (ft)	Total Uncertainty Axis	Separation Factor		
4,900.0	4,178.5	4,553.1	4,188.2	37.2	27.6	-3.70	-970.7	1,047.2	660.6	621.0	39.51	16.717		
5,000.0	4,278.5	4,653.1	4,288.2	37.2	27.6	-3.70	-970.7	1,047.2	660.6	620.9	39.66	16.655		
5,100.0	4,378.5	4,753.1	4,388.2	37.2	27.7	-3.70	-970.7	1,047.2	660.6	620.8	39.81	16.593		
5,200.0	4,478.5	4,853.1	4,488.2	37.3	27.8	-3.70	-970.7	1,047.2	660.6	620.6	39.96	16.530		
5,300.0	4,578.5	4,953.1	4,588.2	37.3	27.8	-3.70	-970.7	1,047.2	660.6	620.4	40.11	16.467		
5,400.0	4,678.5	5,053.1	4,688.2	37.4	27.9	-3.70	-970.7	1,047.2	660.6	620.3	40.27	16.403		
5,500.0	4,778.5	5,153.1	4,788.2	37.4	27.9	-3.70	-970.7	1,047.2	660.6	620.1	40.43	16.339		
5,600.0	4,878.5	5,253.1	4,888.2	37.5	28.0	-3.70	-970.7	1,047.2	660.6	620.0	40.59	16.274		
5,700.0	4,978.5	5,353.1	4,988.2	37.5	28.0	-3.70	-970.7	1,047.2	660.6	619.8	40.75	16.209		
5,800.0	5,078.5	5,453.1	5,088.2	37.6	28.1	-3.70	-970.7	1,047.2	660.6	619.6	40.92	16.143		
5,900.0	5,178.5	5,553.1	5,188.2	37.6	28.1	-3.70	-970.7	1,047.2	660.6	619.5	41.09	16.077		
6,000.0	5,278.5	5,653.1	5,288.2	37.7	28.2	-3.70	-970.7	1,047.2	660.6	619.3	41.26	16.011		
6,100.0	5,378.5	5,753.1	5,388.2	37.7	28.3	-3.70	-970.7	1,047.2	660.6	619.1	41.43	15.944		
6,200.0	5,478.5	5,853.1	5,488.2	37.8	28.3	-3.70	-970.7	1,047.2	660.6	619.0	41.61	15.877		
6,300.0	5,578.5	5,953.1	5,588.2	37.8	28.4	-3.70	-970.7	1,047.2	660.6	618.8	41.78	15.810		
6,341.5	5,620.0	5,994.6	5,629.7	37.8	28.4	-3.70	-970.7	1,047.2	660.6	618.7	41.86	15.782		

Cathedral Energy Services

Anticollision Report

Company:	Caerus Oil & Gas (NAD 27)	Local Co-ordinate Reference:	Well Nolte 11C-24
Project:	Garfield County, CO	TVD Reference:	WELL @ 5108.1ft (Original Well Elev)
Reference Site:	S14-T7S-R96W	MD Reference:	WELL @ 5108.1ft (Original Well Elev)
Site Error:	0.0ft	North Reference:	True
Reference Well:	Nolte 11C-24	Survey Calculation Method:	Minimum Curvature
Well Error:	0.0ft	Output errors are at	2.00 sigma
Reference Wellbore	DD	Database:	USA EDM 5000 Multi Users DB
Reference Design:	Plan #3	Offset TVD Reference:	Offset Datum

Offset Design S14-T7S-R96W - Nolte 11B-24 - DD - Plan #3													Offset Site Error:	0.0 ft
Survey Program: 0-MWD													Offset Well Error:	0.0 ft
Reference		Offset		Semi Major Axis			Distance				Total Uncertainty Axis	Separation Factor	Warning	
Measured Depth (ft)	Vertical Depth (ft)	Measured Depth (ft)	Vertical Depth (ft)	Reference (ft)	Offset (ft)	Highside Toolface (°)	Offset Wellbore Centre +N/-S (ft)	+E/-W (ft)	Between Centres (ft)	Between Ellipses (ft)				
0.0	0.0	9.7	9.7	0.0	0.0	27.59	7.1	3.7	8.0					
100.0	100.0	109.7	109.7	0.1	0.1	27.59	7.1	3.7	8.0	7.7	0.29	27.597		
200.0	200.0	209.7	209.7	0.3	0.3	27.75	7.1	3.7	8.0	7.3	0.64	12.486		
300.0	300.0	309.8	309.7	0.5	0.5	-100.42	4.6	5.7	7.4	6.4	1.00	7.425		
301.7	301.7	311.5	311.4	0.5	0.5	-100.01	4.6	5.8	7.4	6.4	1.01	7.375 CC, ES		
400.0	399.8	409.7	409.3	0.7	0.7	-77.82	-1.8	11.0	8.3	6.9	1.41	5.854		
500.0	499.3	509.4	508.1	0.9	1.0	-62.81	-12.3	19.5	10.5	8.6	1.89	5.582		
600.0	598.0	609.0	605.9	1.2	1.4	-54.82	-26.7	31.2	13.6	11.2	2.42	5.626		
700.0	695.8	708.4	702.4	1.6	1.9	-50.96	-45.1	46.2	17.2	14.1	3.03	5.662		
800.0	792.4	807.6	797.4	2.1	2.4	-49.37	-67.2	64.2	21.1	17.4	3.77	5.611		
900.0	887.5	906.6	890.6	2.7	3.0	-49.06	-93.1	85.3	25.4	20.7	4.64	5.474		
1,000.0	980.9	1,005.5	981.8	3.4	3.7	-49.49	-122.7	109.4	29.9	24.3	5.67	5.279		
1,100.0	1,072.2	1,104.2	1,070.8	4.1	4.6	-50.35	-155.8	136.4	34.8	27.9	6.89	5.053		
1,200.0	1,161.3	1,202.7	1,157.3	5.0	5.5	-51.46	-192.4	166.2	39.9	31.6	8.29	4.819		
1,300.0	1,247.9	1,301.1	1,241.1	5.9	6.4	-52.70	-232.3	198.7	45.4	35.5	9.88	4.590		
1,400.0	1,331.8	1,400.0	1,322.6	6.9	7.5	-54.02	-275.7	234.0	51.1	39.4	11.68	4.373		
1,500.0	1,412.6	1,497.3	1,399.8	8.0	8.6	-55.34	-321.6	271.4	57.1	43.4	13.66	4.177		
1,600.0	1,490.4	1,596.3	1,475.6	9.2	9.8	-57.20	-370.9	311.6	62.9	47.0	15.92	3.953		
1,700.0	1,564.7	1,696.0	1,551.7	10.5	11.1	-62.25	-420.9	352.3	66.6	47.7	18.90	3.522		
1,800.0	1,635.4	1,795.5	1,627.6	11.9	12.3	-70.72	-470.8	392.9	68.8	46.2	22.57	3.049		
1,900.0	1,702.3	1,894.3	1,703.0	13.3	13.5	-82.47	-520.4	433.3	71.6	45.2	26.39	2.714		
2,000.0	1,765.2	1,992.4	1,777.8	14.8	14.7	-96.50	-569.5	473.3	77.7	48.4	29.31	2.651 SF		
2,100.0	1,824.0	2,089.3	1,851.7	16.4	15.9	-110.74	-618.1	512.9	89.6	59.2	30.44	2.943		
2,200.0	1,878.4	2,184.8	1,924.5	18.0	17.0	-123.19	-666.0	551.9	108.8	78.8	29.93	3.634		
2,300.0	1,928.8	2,278.8	1,996.3	19.7	18.2	-133.20	-713.2	590.3	135.0	106.5	28.52	4.733		
2,400.0	1,980.6	2,373.4	2,068.4	21.3	19.3	-140.37	-760.6	629.0	162.8	135.6	27.24	5.976		
2,500.0	2,036.9	2,469.6	2,141.7	22.8	20.5	-144.58	-808.8	668.2	188.0	161.1	26.81	7.009		
2,600.0	2,097.4	2,567.0	2,216.0	24.3	21.7	-147.02	-857.7	708.0	209.4	182.4	27.05	7.741		
2,700.0	2,162.0	2,665.4	2,291.1	25.7	22.9	-148.28	-907.0	748.2	226.7	198.9	27.83	8.146		
2,800.0	2,230.5	2,763.1	2,365.6	27.1	24.1	-148.69	-956.0	788.1	239.7	210.6	29.06	8.248		
2,900.0	2,302.7	2,853.0	2,436.0	28.4	25.1	-148.83	-999.4	823.5	250.7	220.4	30.33	8.267		
3,000.0	2,378.5	2,942.7	2,508.7	29.5	26.1	-148.96	-1,040.1	856.6	261.1	229.6	31.51	8.287		
3,100.0	2,457.5	3,032.1	2,583.5	30.6	27.0	-149.08	-1,078.0	887.5	270.8	238.2	32.60	8.307		
3,200.0	2,539.7	3,121.2	2,660.3	31.6	27.8	-149.19	-1,113.0	916.0	279.8	246.2	33.60	8.327		
3,300.0	2,624.7	3,210.1	2,739.0	32.6	28.5	-149.29	-1,145.2	942.2	288.1	253.6	34.52	8.347		
3,400.0	2,712.3	3,300.0	2,820.4	33.4	29.2	-149.38	-1,174.7	966.3	295.8	260.4	35.35	8.366		
3,500.0	2,802.4	3,387.2	2,901.0	34.2	29.7	-149.47	-1,200.6	987.3	302.6	266.6	36.08	8.388		
3,600.0	2,894.6	3,475.5	2,984.0	34.8	30.2	-149.55	-1,223.8	1,006.2	308.8	272.1	36.72	8.408		
3,700.0	2,988.7	3,563.7	3,068.2	35.4	30.7	-149.63	-1,244.0	1,022.7	314.2	276.9	37.28	8.428		
3,800.0	3,084.4	3,651.7	3,153.4	35.9	31.1	-149.69	-1,261.1	1,036.6	318.8	281.1	37.75	8.446		
3,900.0	3,181.6	3,739.6	3,239.5	36.3	31.3	-149.75	-1,275.1	1,048.1	322.7	284.5	38.13	8.463		
4,000.0	3,279.8	3,827.4	3,326.1	36.6	31.6	-149.81	-1,286.1	1,057.0	325.8	287.3	38.42	8.479		
4,100.0	3,378.9	3,915.2	3,413.3	36.8	31.7	-149.85	-1,293.9	1,063.4	328.0	289.4	38.63	8.492		
4,200.0	3,478.5	4,000.0	3,497.9	36.9	31.8	-149.89	-1,298.6	1,067.2	329.6	290.8	38.75	8.504		
4,300.0	3,578.5	4,092.2	3,590.0	36.9	31.9	-149.93	-1,300.3	1,068.6	330.3	291.5	38.80	8.513		
4,329.4	3,607.9	4,119.7	3,617.6	36.9	31.9	-149.94	-1,300.3	1,068.6	330.4	291.5	38.82	8.509		
4,400.0	3,678.5	4,190.3	3,688.2	37.0	31.9	-3.70	-1,300.3	1,068.6	330.3	291.4	38.92	8.486		
4,500.0	3,778.5	4,290.3	3,788.2	37.0	32.0	-3.70	-1,300.3	1,068.6	330.3	291.2	39.06	8.457		
4,600.0	3,878.5	4,390.3	3,888.2	37.0	32.0	-3.70	-1,300.3	1,068.6	330.3	291.1	39.19	8.427		
4,700.0	3,978.5	4,490.3	3,988.2	37.1	32.0	-3.70	-1,300.3	1,068.6	330.3	290.9	39.33	8.397		
4,800.0	4,078.5	4,590.3	4,088.2	37.1	32.1	-3.70	-1,300.3	1,068.6	330.3	290.8	39.48	8.367		
4,900.0	4,178.5	4,690.3	4,188.2	37.2	32.1	-3.70	-1,300.3	1,068.6	330.3	290.7	39.62	8.336		

CC - Min centre to center distance or convergent point, SF - min separation factor, ES - min ellipse separation

Cathedral Energy Services

Anticollision Report

Company:	Caerus Oil & Gas (NAD 27)	Local Co-ordinate Reference:	Well Nolte 11C-24
Project:	Garfield County, CO	TVD Reference:	WELL @ 5108.1ft (Original Well Elev)
Reference Site:	S14-T7S-R96W	MD Reference:	WELL @ 5108.1ft (Original Well Elev)
Site Error:	0.0ft	North Reference:	True
Reference Well:	Nolte 11C-24	Survey Calculation Method:	Minimum Curvature
Well Error:	0.0ft	Output errors are at	2.00 sigma
Reference Wellbore	DD	Database:	USA EDM 5000 Multi Users DB
Reference Design:	Plan #3	Offset TVD Reference:	Offset Datum

Offset Design S14-T7S-R96W - Nolte 11B-24 - DD - Plan #3													Offset Site Error:	0.0 ft
Survey Program: 0-MWD													Offset Well Error:	0.0 ft
Reference		Offset		Semi Major Axis			Distance						Warning	
Measured Depth (ft)	Vertical Depth (ft)	Measured Depth (ft)	Vertical Depth (ft)	Reference (ft)	Offset (ft)	Highside Toolface (°)	Offset Wellbore Centre +N/-S (ft)	+E/-W (ft)	Between Centres (ft)	Between Ellipses (ft)	Total Uncertainty Axis	Separation Factor		
5,000.0	4,278.5	4,790.3	4,288.2	37.2	32.2	-3.70	-1,300.3	1,068.6	330.3	290.5	39.77	8.305		
5,100.0	4,378.5	4,890.3	4,388.2	37.2	32.2	-3.70	-1,300.3	1,068.6	330.3	290.4	39.92	8.273		
5,200.0	4,478.5	4,990.3	4,488.2	37.3	32.3	-3.70	-1,300.3	1,068.6	330.3	290.2	40.07	8.242		
5,300.0	4,578.5	5,090.3	4,588.2	37.3	32.3	-3.70	-1,300.3	1,068.6	330.3	290.1	40.23	8.210		
5,400.0	4,678.5	5,190.3	4,688.2	37.4	32.4	-3.70	-1,300.3	1,068.6	330.3	289.9	40.39	8.178		
5,500.0	4,778.5	5,290.3	4,788.2	37.4	32.4	-3.70	-1,300.3	1,068.6	330.3	289.7	40.55	8.146		
5,600.0	4,878.5	5,390.3	4,888.2	37.5	32.5	-3.70	-1,300.3	1,068.6	330.3	289.6	40.71	8.113		
5,700.0	4,978.5	5,490.3	4,988.2	37.5	32.5	-3.70	-1,300.3	1,068.6	330.3	289.4	40.87	8.080		
5,800.0	5,078.5	5,590.3	5,088.2	37.6	32.6	-3.70	-1,300.3	1,068.6	330.3	289.2	41.04	8.047		
5,900.0	5,178.5	5,690.3	5,188.2	37.6	32.6	-3.70	-1,300.3	1,068.6	330.3	289.1	41.21	8.014		
6,000.0	5,278.5	5,790.3	5,288.2	37.7	32.7	-3.70	-1,300.3	1,068.6	330.3	288.9	41.38	7.981		
6,100.0	5,378.5	5,890.3	5,388.2	37.7	32.7	-3.70	-1,300.3	1,068.6	330.3	288.7	41.56	7.948		
6,200.0	5,478.5	5,990.3	5,488.2	37.8	32.8	-3.70	-1,300.3	1,068.6	330.3	288.5	41.73	7.914		
6,300.0	5,578.5	6,090.3	5,588.2	37.8	32.8	-3.70	-1,300.3	1,068.6	330.3	288.4	41.91	7.880		
6,341.5	5,620.0	6,131.9	5,629.7	37.8	32.9	-3.70	-1,300.3	1,068.6	330.3	288.3	41.99	7.866		

Cathedral Energy Services

Anticollision Report

Company:	Caerus Oil & Gas (NAD 27)	Local Co-ordinate Reference:	Well Nolte 11C-24
Project:	Garfield County, CO	TVD Reference:	WELL @ 5108.1ft (Original Well Elev)
Reference Site:	S14-T7S-R96W	MD Reference:	WELL @ 5108.1ft (Original Well Elev)
Site Error:	0.0ft	North Reference:	True
Reference Well:	Nolte 11C-24	Survey Calculation Method:	Minimum Curvature
Well Error:	0.0ft	Output errors are at	2.00 sigma
Reference Wellbore	DD	Database:	USA EDM 5000 Multi Users DB
Reference Design:	Plan #3	Offset TVD Reference:	Offset Datum

Offset Design													Offset Site Error:	0.0 ft	
Survey Program: 0-MWD													Offset Well Error:		0.0 ft
Reference															
Offset				Semi Major Axis			Distance								
Measured Depth (ft)	Vertical Depth (ft)	Measured Depth (ft)	Vertical Depth (ft)	Reference (ft)	Offset (ft)	Highside Toolface (°)	Offset Wellbore Centre +N/-S (ft)	+E/-W (ft)	Between Centres (ft)	Between Ellipses (ft)	Total Uncertainty Axis	Separation Factor	Warning		
0.0	0.0	9.7	9.7	0.0	0.0	18.65	61.4	20.7	64.8						
100.0	100.0	109.7	109.7	0.1	0.1	18.65	61.4	20.7	64.8	64.5	0.29	223.784			
163.1	163.1	172.8	172.8	0.3	0.3	18.65	61.4	20.7	64.8	64.2	0.51	127.079	CC		
200.0	200.0	209.4	209.4	0.3	0.3	18.65	61.4	20.7	64.8	64.1	0.64	101.489	ES		
300.0	300.0	306.1	306.0	0.5	0.5	-127.39	63.9	22.2	68.1	67.1	0.98	69.359			
400.0	399.8	400.0	399.6	0.7	0.7	-128.75	70.3	26.2	79.2	77.9	1.33	59.403			
500.0	499.3	495.7	494.5	0.9	1.0	-131.11	80.8	32.7	98.4	96.7	1.72	57.216	SF		
600.0	598.0	586.7	584.0	1.2	1.3	-133.36	94.6	41.1	125.7	123.5	2.14	58.662			
700.0	695.8	674.0	669.2	1.6	1.7	-135.12	111.2	51.4	160.8	158.2	2.61	61.590			
800.0	792.4	757.0	749.1	2.1	2.1	-136.31	130.1	63.0	203.4	200.3	3.13	65.048			
900.0	887.5	835.2	823.5	2.7	2.6	-136.99	150.5	75.5	253.0	249.3	3.69	68.578			
1,000.0	980.9	908.1	892.0	3.4	3.0	-137.24	171.9	88.7	309.0	304.7	4.29	71.952			
1,100.0	1,072.2	975.7	954.6	4.1	3.5	-137.10	193.7	102.1	370.9	366.0	4.95	74.948			
1,200.0	1,161.3	1,037.9	1,011.3	5.0	4.0	-136.60	215.4	115.5	438.2	432.5	5.65	77.543			
1,300.0	1,247.9	1,100.0	1,067.1	5.9	4.5	-135.88	238.7	129.8	510.3	503.9	6.41	79.564			
1,400.0	1,331.8	1,145.9	1,107.7	6.9	4.9	-134.54	256.8	141.0	586.6	579.4	7.23	81.121			
1,500.0	1,412.6	1,200.0	1,154.9	8.0	5.4	-133.16	279.3	154.8	666.8	658.6	8.14	81.866			
1,600.0	1,490.4	1,233.3	1,183.6	9.2	5.7	-130.87	293.7	163.6	750.2	741.0	9.18	81.744			
1,700.0	1,564.7	1,269.7	1,214.7	10.5	6.1	-128.27	309.9	173.6	836.5	826.1	10.38	80.612			
1,800.0	1,635.4	1,300.0	1,240.2	11.9	6.4	-124.95	323.8	182.1	925.3	913.4	11.81	78.343			
1,900.0	1,702.3	1,329.2	1,264.6	13.3	6.7	-121.01	337.5	190.6	1,016.1	1,002.6	13.53	75.091			
2,000.0	1,765.2	1,352.8	1,284.0	14.8	6.9	-116.06	348.8	197.5	1,108.7	1,093.1	15.61	71.028			
2,100.0	1,824.0	1,372.5	1,300.2	16.4	7.1	-110.01	358.4	203.4	1,202.6	1,184.6	18.02	66.733			
2,200.0	1,878.4	1,400.0	1,322.6	18.0	7.4	-103.85	372.0	211.8	1,297.7	1,277.2	20.54	63.170			

CC - Min centre to center distance or convergent point, SF - min separation factor, ES - min ellipse separation

Cathedral Energy Services

Anticollision Report

Company:	Caerus Oil & Gas (NAD 27)	Local Co-ordinate Reference:	Well Nolte 11C-24
Project:	Garfield County, CO	TVD Reference:	WELL @ 5108.1ft (Original Well Elev)
Reference Site:	S14-T7S-R96W	MD Reference:	WELL @ 5108.1ft (Original Well Elev)
Site Error:	0.0ft	North Reference:	True
Reference Well:	Nolte 11C-24	Survey Calculation Method:	Minimum Curvature
Well Error:	0.0ft	Output errors are at	2.00 sigma
Reference Wellbore	DD	Database:	USA EDM 5000 Multi Users DB
Reference Design:	Plan #3	Offset TVD Reference:	Offset Datum

Offset Design													Offset Site Error:	0.0 ft	
Survey Program: 0-MWD													Offset Well Error:		0.0 ft
Reference															
Offset				Semi Major Axis			Distance								
Measured Depth (ft)	Vertical Depth (ft)	Measured Depth (ft)	Vertical Depth (ft)	Reference (ft)	Offset (ft)	Highside Toolface (°)	Offset Wellbore Centre +N/-S (ft)	+E/-W (ft)	Between Centres (ft)	Between Ellipses (ft)	Total Uncertainty Axis	Separation Factor	Warning		
0.0	0.0	9.7	9.7	0.0	0.0	17.40	54.3	17.0	56.9						
100.0	100.0	109.7	109.7	0.1	0.1	17.40	54.3	17.0	56.9	56.6	0.29	196.641			
200.0	200.0	209.7	209.7	0.3	0.3	17.40	54.3	17.0	56.9	56.2	0.64	89.099 CC			
218.5	218.5	228.2	228.2	0.4	0.4	-128.87	54.3	17.0	56.9	56.2	0.70	80.962 ES			
300.0	300.0	308.0	308.0	0.5	0.5	-128.99	55.0	17.5	58.1	57.1	0.99	59.004			
400.0	399.8	404.7	404.6	0.7	0.7	-130.56	59.2	20.8	66.7	65.3	1.34	49.715			
500.0	499.3	500.0	499.3	0.9	0.9	-132.82	67.2	27.0	83.3	81.6	1.73	48.266 SF			
600.0	598.0	592.5	590.7	1.2	1.2	-134.83	78.5	35.8	107.9	105.8	2.15	50.104			
700.0	695.8	681.9	678.3	1.6	1.6	-136.28	92.7	46.8	140.4	137.7	2.64	53.259			
800.0	792.4	767.4	761.1	2.1	1.9	-137.17	109.3	59.7	180.2	177.0	3.17	56.808			
900.0	887.5	848.3	838.6	2.7	2.4	-137.59	127.7	74.0	226.9	223.1	3.76	60.326			
1,000.0	980.9	924.5	910.5	3.4	2.9	-137.62	147.4	89.2	280.1	275.7	4.40	63.634			
1,100.0	1,072.2	1,000.0	980.9	4.1	3.4	-137.40	169.2	106.1	339.2	334.1	5.10	66.482			
1,200.0	1,161.3	1,061.2	1,037.0	5.0	3.8	-136.72	188.4	121.0	403.7	397.9	5.84	69.177			
1,300.0	1,247.9	1,121.7	1,091.7	5.9	4.3	-135.82	208.8	136.8	473.2	466.6	6.63	71.362			
1,400.0	1,331.8	1,176.9	1,141.0	6.9	4.8	-134.62	228.6	152.1	547.0	539.6	7.49	73.060			
1,500.0	1,412.6	1,227.1	1,185.0	8.0	5.2	-133.08	247.5	166.8	624.8	616.4	8.42	74.217			
1,600.0	1,490.4	1,272.3	1,224.2	9.2	5.7	-131.15	265.4	180.7	706.1	696.6	9.45	74.754			
1,700.0	1,564.7	1,312.7	1,258.7	10.5	6.1	-128.78	282.0	193.5	790.4	779.8	10.60	74.589			
1,800.0	1,635.4	1,348.7	1,289.1	11.9	6.4	-125.88	297.2	205.3	877.3	865.4	11.92	73.615			
1,900.0	1,702.3	1,380.3	1,315.4	13.3	6.8	-122.35	311.0	216.0	966.5	953.1	13.46	71.809			
2,000.0	1,765.2	1,400.0	1,331.8	14.8	7.0	-117.60	319.7	222.8	1,057.7	1,042.3	15.33	68.991			
2,100.0	1,824.0	1,431.3	1,357.4	16.4	7.3	-112.86	333.9	233.8	1,150.3	1,132.9	17.43	66.005			
2,200.0	1,878.4	1,451.2	1,373.6	18.0	7.5	-106.63	343.1	240.9	1,244.2	1,224.4	19.85	62.670			
2,300.0	1,928.8	1,468.3	1,387.3	19.7	7.7	-103.13	351.1	247.1	1,339.1	1,317.2	21.96	60.969			

CC - Min centre to center distance or convergent point, SF - min separation factor, ES - min ellipse separation

Cathedral Energy Services

Anticollision Report

Company:	Caerus Oil & Gas (NAD 27)	Local Co-ordinate Reference:	Well Nolte 11C-24
Project:	Garfield County, CO	TVD Reference:	WELL @ 5108.1ft (Original Well Elev)
Reference Site:	S14-T7S-R96W	MD Reference:	WELL @ 5108.1ft (Original Well Elev)
Site Error:	0.0ft	North Reference:	True
Reference Well:	Nolte 11C-24	Survey Calculation Method:	Minimum Curvature
Well Error:	0.0ft	Output errors are at	2.00 sigma
Reference Wellbore	DD	Database:	USA EDM 5000 Multi Users DB
Reference Design:	Plan #3	Offset TVD Reference:	Offset Datum

Offset Design													Offset Site Error:	0.0 ft	
Survey Program: 0-MWD													Offset Well Error:		0.0 ft
Reference															
Offset				Semi Major Axis			Distance								
Measured Depth (ft)	Vertical Depth (ft)	Measured Depth (ft)	Vertical Depth (ft)	Reference (ft)	Offset (ft)	Highside Toolface (°)	Offset Wellbore Centre +N/-S (ft)	+E/-W (ft)	Between Centres (ft)	Between Ellipses (ft)	Total Uncertainty Axis	Separation Factor	Warning		
0.0	0.0	9.5	9.5	0.0	0.0	27.53	56.7	29.6	64.0						
100.0	100.0	109.5	109.5	0.1	0.1	27.53	56.7	29.6	64.0	63.7	0.29	221.757			
163.2	163.2	172.7	172.7	0.3	0.3	27.53	56.7	29.6	64.0	63.5	0.51	125.693 CC			
200.0	200.0	209.2	209.2	0.3	0.3	27.54	56.7	29.6	64.0	63.4	0.64	100.406 ES			
300.0	300.0	306.0	306.0	0.5	0.5	-118.31	58.8	31.7	67.2	66.2	0.98	68.379			
400.0	399.8	402.0	401.7	0.7	0.7	-119.55	64.1	37.3	77.3	76.0	1.34	57.589			
500.0	499.3	496.4	495.2	0.9	1.0	-121.86	72.7	46.1	94.8	93.1	1.74	54.367			
600.0	598.0	588.4	585.7	1.2	1.3	-124.23	84.1	57.9	119.7	117.5	2.21	54.275 SF			
700.0	695.8	677.3	672.3	1.6	1.7	-126.17	97.9	72.3	151.8	149.1	2.73	55.501			
800.0	792.4	762.5	754.4	2.1	2.1	-127.55	113.8	88.7	190.8	187.5	3.33	57.230			
900.0	887.5	843.5	831.4	2.7	2.6	-128.40	131.3	106.8	236.4	232.4	4.00	59.099			
1,000.0	980.9	920.0	903.0	3.4	3.1	-128.80	149.9	126.1	288.0	283.3	4.73	60.950			
1,100.0	1,072.2	991.8	969.3	4.1	3.7	-128.80	169.1	146.0	345.3	339.8	5.51	62.672			
1,200.0	1,161.3	1,058.8	1,030.1	5.0	4.2	-128.44	188.6	166.2	407.8	401.5	6.36	64.168			
1,300.0	1,247.9	1,120.8	1,085.6	5.9	4.7	-127.74	207.9	186.2	475.0	467.8	7.25	65.530			
1,400.0	1,331.8	1,183.9	1,141.0	6.9	5.3	-126.88	228.7	207.8	546.4	538.1	8.22	66.506			
1,500.0	1,412.6	1,249.9	1,199.1	8.0	5.9	-126.06	250.6	230.5	620.3	611.1	9.25	67.050			
1,600.0	1,490.4	1,312.8	1,254.3	9.2	6.4	-125.12	271.5	252.1	696.6	686.3	10.34	67.347			
1,700.0	1,564.7	1,372.4	1,306.7	10.5	6.9	-124.00	291.3	272.6	775.2	763.7	11.50	67.383			
1,800.0	1,635.4	1,428.5	1,356.0	11.9	7.4	-122.64	309.9	291.9	855.9	843.1	12.75	67.151			
1,900.0	1,702.3	1,481.0	1,402.0	13.3	7.9	-121.00	327.3	310.0	938.6	924.5	14.09	66.619			
2,000.0	1,765.2	1,529.7	1,444.8	14.8	8.3	-119.00	343.5	326.7	1,023.3	1,007.8	15.56	65.756			
2,100.0	1,824.0	1,574.5	1,484.1	16.4	8.7	-116.60	358.4	342.1	1,109.8	1,092.6	17.20	64.539			
2,200.0	1,878.4	1,615.2	1,519.9	18.0	9.1	-113.71	371.9	356.1	1,197.9	1,178.9	19.02	62.975			
2,300.0	1,928.8	1,652.1	1,552.3	19.7	9.4	-112.64	384.1	368.8	1,287.4	1,266.7	20.73	62.091			

CC - Min centre to center distance or convergent point, SF - min separation factor, ES - min ellipse separation

Cathedral Energy Services

Anticollision Report

Company:	Caerus Oil & Gas (NAD 27)	Local Co-ordinate Reference:	Well Nolte 11C-24
Project:	Garfield County, CO	TVD Reference:	WELL @ 5108.1ft (Original Well Elev)
Reference Site:	S14-T7S-R96W	MD Reference:	WELL @ 5108.1ft (Original Well Elev)
Site Error:	0.0ft	North Reference:	True
Reference Well:	Nolte 11C-24	Survey Calculation Method:	Minimum Curvature
Well Error:	0.0ft	Output errors are at	2.00 sigma
Reference Wellbore	DD	Database:	USA EDM 5000 Multi Users DB
Reference Design:	Plan #3	Offset TVD Reference:	Offset Datum

Offset Design													Offset Site Error:	0.0 ft	
Survey Program: 0-MWD													Offset Well Error:		0.0 ft
Reference															
Offset				Semi Major Axis			Distance								
Measured Depth (ft)	Vertical Depth (ft)	Measured Depth (ft)	Vertical Depth (ft)	Reference (ft)	Offset (ft)	Highside Toolface (°)	Offset Wellbore Centre +N/-S (ft)	+E/-W (ft)	Between Centres (ft)	Between Ellipses (ft)	Total Uncertainty Axis	Separation Factor	Warning		
0.0	0.0	9.7	9.7	0.0	0.0	27.53	49.6	25.9	56.0						
100.0	100.0	109.7	109.7	0.1	0.1	27.53	49.6	25.9	56.0	55.7	0.29	193.914			
200.0	200.0	209.7	209.7	0.3	0.3	27.53	49.6	25.9	56.0	55.3	0.64	87.776 CC			
239.2	239.2	248.9	248.9	0.4	0.4	-118.88	49.6	25.9	56.1	55.3	0.77	72.370 ES			
300.0	300.0	309.5	309.5	0.5	0.5	-119.26	49.7	25.9	56.3	55.3	0.99	57.054			
400.0	399.8	406.7	406.7	0.7	0.7	-121.86	51.2	28.4	61.6	60.2	1.35	45.714			
500.0	499.3	503.1	502.7	0.9	0.9	-124.89	55.4	35.0	74.0	72.2	1.75	42.373 SF			
600.0	598.0	597.8	596.6	1.2	1.1	-127.41	62.0	45.5	93.5	91.3	2.21	42.390			
700.0	695.8	690.3	687.6	1.6	1.5	-129.14	70.9	59.4	120.0	117.3	2.75	43.717			
800.0	792.4	779.8	774.8	2.1	1.8	-130.15	81.7	76.5	153.2	149.8	3.37	45.464			
900.0	887.5	866.1	857.8	2.7	2.3	-130.61	94.2	96.2	192.7	188.6	4.08	47.246			
1,000.0	980.9	948.6	936.2	3.4	2.8	-130.66	108.0	118.0	238.1	233.3	4.87	48.928			
1,100.0	1,072.2	1,027.1	1,009.7	4.1	3.3	-130.38	122.8	141.4	289.2	283.5	5.73	50.474			
1,200.0	1,161.3	1,100.0	1,076.8	5.0	3.8	-129.80	138.0	165.4	345.5	338.8	6.65	51.931			
1,300.0	1,247.9	1,177.3	1,147.0	5.9	4.4	-129.19	155.2	192.6	406.2	398.6	7.66	52.997			
1,400.0	1,331.8	1,253.9	1,216.6	6.9	5.0	-128.74	172.5	219.9	469.8	461.1	8.73	53.846			
1,500.0	1,412.6	1,328.0	1,283.8	8.0	5.6	-128.33	189.1	246.1	536.1	526.3	9.82	54.579			
1,600.0	1,490.4	1,399.1	1,348.3	9.2	6.1	-127.90	205.1	271.4	605.1	594.1	10.96	55.212			
1,700.0	1,564.7	1,467.3	1,410.2	10.5	6.7	-127.36	220.4	295.6	676.7	664.5	12.14	55.744			
1,800.0	1,635.4	1,532.2	1,469.1	11.9	7.2	-126.68	235.0	318.6	750.8	737.5	13.37	56.169			
1,900.0	1,702.3	1,593.7	1,524.9	13.3	7.7	-125.81	248.8	340.5	827.4	812.8	14.65	56.463			
2,000.0	1,765.2	1,651.6	1,577.4	14.8	8.1	-124.70	261.9	361.0	906.4	890.4	16.02	56.597			
2,100.0	1,824.0	1,705.7	1,626.6	16.4	8.6	-123.30	274.0	380.3	987.7	970.2	17.47	56.544			
2,200.0	1,878.4	1,756.0	1,672.2	18.0	9.0	-121.56	285.3	398.1	1,071.1	1,052.1	19.03	56.274			
2,300.0	1,928.8	1,802.6	1,714.5	19.7	9.3	-121.21	295.8	414.6	1,156.3	1,135.8	20.54	56.307			
2,400.0	1,980.6	1,850.6	1,758.0	21.3	9.7	-127.00	306.6	431.7	1,241.5	1,220.2	21.29	58.314			
2,500.0	2,036.9	1,902.5	1,805.1	22.8	10.1	-131.86	318.3	450.1	1,325.3	1,303.3	21.98	60.304			

CC - Min centre to center distance or convergent point, SF - min separation factor, ES - min ellipse separation

Cathedral Energy Services

Anticollision Report

Company:	Caerus Oil & Gas (NAD 27)	Local Co-ordinate Reference:	Well Nolte 11C-24
Project:	Garfield County, CO	TVD Reference:	WELL @ 5108.1ft (Original Well Elev)
Reference Site:	S14-T7S-R96W	MD Reference:	WELL @ 5108.1ft (Original Well Elev)
Site Error:	0.0ft	North Reference:	True
Reference Well:	Nolte 11C-24	Survey Calculation Method:	Minimum Curvature
Well Error:	0.0ft	Output errors are at	2.00 sigma
Reference Wellbore	DD	Database:	USA EDM 5000 Multi Users DB
Reference Design:	Plan #3	Offset TVD Reference:	Offset Datum

Offset Design													Offset Site Error:	0.0 ft	
Survey Program: 0-MWD													Offset Well Error:		0.0 ft
Reference															
Offset				Semi Major Axis			Distance								
Measured Depth (ft)	Vertical Depth (ft)	Measured Depth (ft)	Vertical Depth (ft)	Reference (ft)	Offset (ft)	Highside Toolface (°)	Offset Wellbore Centre +N/-S (ft)	+E/-W (ft)	Between Centres (ft)	Between Ellipses (ft)	Total Uncertainty Axis	Separation Factor	Warning		
0.0	0.0	9.7	9.7	0.0	0.0	27.53	42.5	22.2	48.0						
100.0	100.0	109.7	109.7	0.1	0.1	27.53	42.5	22.2	48.0	47.7	0.29	166.206			
200.0	200.0	209.7	209.7	0.3	0.3	27.53	42.5	22.2	48.0	47.3	0.64	75.234	CC		
228.5	228.5	238.2	238.2	0.4	0.4	-118.82	42.5	22.2	48.0	47.3	0.74	65.151	ES		
300.0	300.0	309.7	309.7	0.5	0.5	-119.38	42.5	22.2	48.3	47.3	0.99	48.926			
400.0	399.8	409.4	409.4	0.7	0.7	-124.39	42.6	22.2	51.1	49.7	1.35	37.900			
500.0	499.3	507.2	507.2	0.9	0.8	-130.17	43.4	25.1	59.2	57.5	1.73	34.171			
600.0	598.0	604.3	603.9	1.2	1.0	-133.76	45.7	32.6	73.9	71.8	2.17	34.102	SF		
700.0	695.8	700.0	698.8	1.6	1.3	-135.42	49.4	44.7	94.8	92.1	2.68	35.388			
800.0	792.4	794.1	791.3	2.1	1.6	-135.82	54.4	60.9	121.5	118.2	3.29	36.899			
900.0	887.5	885.9	880.7	2.7	2.0	-135.51	60.5	81.0	153.8	149.8	4.02	38.276			
1,000.0	980.9	975.1	966.4	3.4	2.5	-134.80	67.7	104.3	191.5	186.7	4.86	39.428			
1,100.0	1,072.2	1,061.4	1,048.2	4.1	3.0	-133.85	75.7	130.6	234.4	228.6	5.81	40.379			
1,200.0	1,161.3	1,144.4	1,125.7	5.0	3.5	-132.76	84.5	159.2	282.2	275.4	6.84	41.259			
1,300.0	1,247.9	1,229.1	1,203.8	5.9	4.1	-131.81	94.0	190.4	334.1	326.1	7.96	41.962			
1,400.0	1,331.8	1,312.5	1,280.8	6.9	4.7	-131.29	103.5	221.2	389.0	379.9	9.12	42.659			
1,500.0	1,412.6	1,393.6	1,355.6	8.0	5.3	-131.01	112.6	251.2	446.9	436.6	10.30	43.369			
1,600.0	1,490.4	1,472.3	1,428.2	9.2	5.8	-130.83	121.5	280.2	507.7	496.2	11.51	44.092			
1,700.0	1,564.7	1,548.3	1,498.3	10.5	6.4	-130.66	130.1	308.3	571.5	558.7	12.75	44.821			
1,800.0	1,635.4	1,621.4	1,565.7	11.9	6.9	-130.43	138.4	335.3	638.1	624.1	14.01	45.539			
1,900.0	1,702.3	1,691.4	1,630.2	13.3	7.4	-130.10	146.3	361.1	707.7	692.3	15.31	46.222			
2,000.0	1,765.2	1,758.1	1,691.8	14.8	7.9	-129.62	153.8	385.8	780.0	763.3	16.65	46.844			
2,100.0	1,824.0	1,821.3	1,750.1	16.4	8.4	-128.94	161.0	409.1	855.0	836.9	18.05	47.376			
2,200.0	1,878.4	1,880.9	1,805.0	18.0	8.8	-128.03	167.7	431.1	932.6	913.1	19.52	47.786			
2,300.0	1,928.8	1,936.9	1,856.7	19.7	9.2	-128.19	174.0	451.8	1,012.5	991.6	20.91	48.429			
2,400.0	1,980.6	1,994.3	1,909.6	21.3	9.6	-132.82	180.5	473.0	1,092.2	1,070.5	21.67	50.411			
2,500.0	2,036.9	2,055.4	1,966.0	22.8	10.1	-136.62	187.4	495.6	1,170.0	1,147.5	22.40	52.219			
2,600.0	2,097.4	2,120.0	2,025.6	24.3	10.6	-139.70	194.7	519.5	1,245.4	1,222.2	23.16	53.767			
2,700.0	2,162.0	2,188.1	2,088.4	25.7	11.1	-142.20	202.4	544.6	1,318.2	1,294.3	23.96	55.011			

Cathedral Energy Services

Anticollision Report

Company:	Caerus Oil & Gas (NAD 27)	Local Co-ordinate Reference:	Well Nolte 11C-24
Project:	Garfield County, CO	TVD Reference:	WELL @ 5108.1ft (Original Well Elev)
Reference Site:	S14-T7S-R96W	MD Reference:	WELL @ 5108.1ft (Original Well Elev)
Site Error:	0.0ft	North Reference:	True
Reference Well:	Nolte 11C-24	Survey Calculation Method:	Minimum Curvature
Well Error:	0.0ft	Output errors are at	2.00 sigma
Reference Wellbore	DD	Database:	USA EDM 5000 Multi Users DB
Reference Design:	Plan #3	Offset TVD Reference:	Offset Datum

Offset Design													Offset Site Error:	0.0 ft	
Survey Program: 0-MWD													Offset Well Error:		0.0 ft
Reference															
Offset				Semi Major Axis			Distance								
Measured Depth (ft)	Vertical Depth (ft)	Measured Depth (ft)	Vertical Depth (ft)	Reference (ft)	Offset (ft)	Highside Toolface (°)	Offset Wellbore Centre +N/-S (ft)	+E/-W (ft)	Between Centres (ft)	Between Ellipses (ft)	Total Uncertainty Axis	Separation Factor	Warning		
0.0	0.0	9.7	9.7	0.0	0.0	27.52	35.5	18.5	40.0						
100.0	100.0	109.7	109.7	0.1	0.1	27.52	35.5	18.5	40.0	39.7	0.29	138.428			
200.0	200.0	209.7	209.7	0.3	0.3	27.52	35.5	18.5	40.0	39.3	0.64	62.681 CC			
228.6	228.6	238.3	238.3	0.4	0.4	-118.85	35.5	18.5	40.0	39.3	0.74	54.261 ES			
300.0	300.0	309.7	309.7	0.5	0.5	-119.52	35.5	18.5	40.3	39.3	0.99	40.821			
400.0	399.8	409.5	409.5	0.7	0.7	-125.51	35.5	18.5	43.1	41.8	1.35	32.002			
500.0	499.3	509.0	509.0	0.9	0.8	-135.14	35.5	18.5	49.9	48.2	1.72	28.973 SF			
600.0	598.0	607.7	607.7	1.2	1.0	-144.32	35.4	19.3	62.1	60.0	2.10	29.528			
700.0	695.8	706.2	706.0	1.6	1.2	-148.80	35.4	24.9	79.4	76.8	2.50	31.721			
800.0	792.4	804.2	803.5	2.1	1.4	-150.06	35.2	35.4	100.9	98.0	2.96	34.050			
900.0	887.5	901.5	899.5	2.7	1.7	-149.57	34.9	50.7	126.4	122.9	3.53	35.838			
1,000.0	980.9	997.7	993.6	3.4	2.0	-148.19	34.6	70.7	155.8	151.6	4.23	36.864			
1,100.0	1,072.2	1,092.6	1,085.3	4.1	2.5	-146.38	34.2	95.0	189.1	184.0	5.08	37.222			
1,200.0	1,161.3	1,185.8	1,174.1	5.0	3.0	-144.39	33.7	123.3	226.2	220.1	6.09	37.136			
1,300.0	1,247.9	1,277.3	1,259.8	5.9	3.6	-142.33	33.2	155.3	267.2	259.9	7.26	36.806			
1,400.0	1,331.8	1,366.8	1,342.2	6.9	4.2	-140.31	32.6	190.3	311.9	303.3	8.54	36.522			
1,500.0	1,412.6	1,454.3	1,422.4	8.0	4.8	-138.86	32.0	225.3	360.2	350.3	9.86	36.533			
1,600.0	1,490.4	1,539.8	1,500.7	9.2	5.4	-137.93	31.5	259.7	411.9	400.7	11.19	36.818			
1,700.0	1,564.7	1,623.2	1,577.1	10.5	6.1	-137.32	30.9	293.1	466.9	454.4	12.52	37.288			
1,800.0	1,635.4	1,704.1	1,651.2	11.9	6.7	-136.88	30.4	325.5	525.2	511.3	13.86	37.883			
1,900.0	1,702.3	1,782.4	1,722.9	13.3	7.3	-136.52	29.8	356.9	586.7	571.5	15.22	38.559			
2,000.0	1,765.2	1,857.8	1,792.0	14.8	7.8	-136.17	29.3	387.1	651.3	634.7	16.58	39.278			
2,100.0	1,824.0	1,930.1	1,858.2	16.4	8.4	-135.77	28.9	416.1	719.0	701.0	17.97	40.004			
2,200.0	1,878.4	1,999.1	1,921.5	18.0	8.9	-135.27	28.4	443.8	789.7	770.3	19.40	40.703			
2,300.0	1,928.8	2,065.0	1,981.8	19.7	9.4	-135.58	28.0	470.2	863.1	842.4	20.73	41.646			
2,400.0	1,980.6	2,132.0	2,043.2	21.3	9.9	-139.04	27.5	497.1	935.9	914.5	21.49	43.543			
2,500.0	2,036.9	2,202.4	2,107.7	22.8	10.5	-141.78	27.0	525.4	1,006.2	983.8	22.31	45.091			
2,600.0	2,097.4	2,276.0	2,175.1	24.3	11.0	-143.94	26.6	554.9	1,073.5	1,050.3	23.20	46.271			
2,700.0	2,162.0	2,352.7	2,245.3	25.7	11.6	-145.64	26.0	585.6	1,137.6	1,113.5	24.16	47.093			
2,800.0	2,230.5	2,432.0	2,318.0	27.1	12.2	-146.95	25.5	617.4	1,198.4	1,173.2	25.19	47.581			
2,900.0	2,302.7	2,514.0	2,393.1	28.4	12.9	-147.96	25.0	650.3	1,255.6	1,229.4	26.29	47.769			
3,000.0	2,378.5	2,598.3	2,470.3	29.5	13.5	-148.70	24.4	684.1	1,309.2	1,281.8	27.45	47.694			

CC - Min centre to center distance or convergent point, SF - min separation factor, ES - min ellipse separation

Cathedral Energy Services

Anticollision Report

Company:	Caerus Oil & Gas (NAD 27)	Local Co-ordinate Reference:	Well Nolte 11C-24
Project:	Garfield County, CO	TVD Reference:	WELL @ 5108.1ft (Original Well Elev)
Reference Site:	S14-T7S-R96W	MD Reference:	WELL @ 5108.1ft (Original Well Elev)
Site Error:	0.0ft	North Reference:	True
Reference Well:	Nolte 11C-24	Survey Calculation Method:	Minimum Curvature
Well Error:	0.0ft	Output errors are at	2.00 sigma
Reference Wellbore	DD	Database:	USA EDM 5000 Multi Users DB
Reference Design:	Plan #3	Offset TVD Reference:	Offset Datum

Offset Design S14-T7S-R96W - Nolte 14C-13 - DD - Plan #3													Offset Site Error:	0.0 ft
Survey Program: 0-MWD													Offset Well Error:	0.0 ft
Reference		Offset		Semi Major Axis			Distance			Total Uncertainty Axis	Separation Factor	Warning		
Measured Depth (ft)	Vertical Depth (ft)	Measured Depth (ft)	Vertical Depth (ft)	Reference (ft)	Offset (ft)	Highside Toolface (°)	Offset Wellbore Centre +N/-S (ft)	+E/-W (ft)	Between Centres (ft)				Between Ellipses (ft)	
0.0	0.0	9.7	9.7	0.0	0.0	27.17	28.9	14.8	32.5					
100.0	100.0	109.7	109.7	0.1	0.1	27.17	28.9	14.8	32.5	32.2	0.29	112.363		
200.0	200.0	209.7	209.7	0.3	0.3	27.17	28.9	14.8	32.5	31.8	0.64	50.895 CC		
228.8	228.8	238.5	238.5	0.4	0.4	-119.23	28.9	14.8	32.5	31.8	0.74	44.041 ES		
300.0	300.0	309.7	309.7	0.5	0.5	-120.05	28.9	14.8	32.8	31.8	0.99	33.214		
400.0	399.8	409.5	409.5	0.7	0.7	-127.26	28.9	14.8	35.7	34.4	1.35	26.507		
500.0	499.3	509.0	509.0	0.9	0.8	-138.26	28.9	14.8	42.9	41.1	1.72	24.931 SF		
600.0	598.0	608.8	608.8	1.2	1.0	-145.91	27.9	17.8	54.5	52.4	2.10	25.916		
700.0	695.8	708.8	708.4	1.6	1.2	-148.90	25.2	25.6	69.2	66.7	2.53	27.399		
800.0	792.4	808.9	807.5	2.1	1.5	-149.25	20.8	38.4	86.5	83.4	3.03	28.543		
900.0	887.5	908.8	905.7	2.7	1.8	-148.19	14.7	56.0	106.2	102.5	3.66	29.046		
1,000.0	980.9	1,008.5	1,002.6	3.4	2.2	-146.39	6.9	78.5	128.4	123.9	4.44	28.913		
1,100.0	1,072.2	1,107.8	1,097.6	4.1	2.7	-144.25	-2.4	105.5	153.1	147.7	5.40	28.322		
1,200.0	1,161.3	1,206.6	1,190.6	5.0	3.4	-141.96	-13.3	137.0	180.4	173.8	6.56	27.486		
1,300.0	1,247.9	1,304.8	1,281.2	5.9	4.1	-139.65	-25.6	172.7	210.3	202.4	7.91	26.579		
1,400.0	1,331.8	1,400.2	1,367.6	6.9	4.8	-137.63	-38.8	210.8	243.1	233.7	9.37	25.945		
1,500.0	1,412.6	1,493.3	1,451.9	8.0	5.5	-136.54	-51.7	248.3	279.5	268.6	10.82	25.826		
1,600.0	1,490.4	1,584.9	1,534.8	9.2	6.2	-136.13	-64.4	285.1	319.4	307.1	12.26	26.055		
1,700.0	1,564.7	1,674.9	1,616.2	10.5	7.0	-136.13	-76.9	321.3	362.8	349.1	13.67	26.535		
1,800.0	1,635.4	1,762.8	1,695.8	11.9	7.7	-136.37	-89.1	356.7	409.6	394.6	15.06	27.201		
1,900.0	1,702.3	1,848.5	1,773.4	13.3	8.4	-136.73	-101.0	391.2	460.1	443.6	16.42	28.010		
2,000.0	1,765.2	1,931.8	1,848.8	14.8	9.0	-137.13	-112.6	424.6	514.0	496.2	17.77	28.927		
2,100.0	1,824.0	2,012.4	1,921.7	16.4	9.7	-137.49	-123.8	457.1	571.5	552.4	19.10	29.920		
2,200.0	1,878.4	2,090.1	1,992.0	18.0	10.3	-137.77	-134.5	488.3	632.4	612.0	20.43	30.958		
2,300.0	1,928.8	2,165.0	2,059.8	19.7	10.9	-138.63	-144.9	518.4	696.6	675.0	21.63	32.202		
2,400.0	1,980.6	2,240.9	2,128.5	21.3	11.5	-141.65	-155.5	548.9	760.1	737.7	22.37	33.975		
2,500.0	2,036.9	2,319.8	2,199.9	22.8	12.2	-143.97	-166.4	580.7	820.6	797.4	23.20	35.371		
2,600.0	2,097.4	2,401.5	2,273.9	24.3	12.8	-145.75	-177.8	613.5	877.7	853.6	24.12	36.392		
2,700.0	2,162.0	2,485.9	2,350.2	25.7	13.5	-147.10	-189.5	647.5	931.3	906.2	25.13	37.059		
2,800.0	2,230.5	2,572.6	2,428.6	27.1	14.2	-148.09	-201.5	682.3	981.1	954.9	26.23	37.403		
2,900.0	2,302.7	2,661.4	2,509.0	28.4	15.0	-148.79	-213.8	718.0	1,027.1	999.6	27.42	37.459		
3,000.0	2,378.5	2,752.0	2,591.0	29.5	15.7	-149.24	-226.4	754.5	1,069.0	1,040.3	28.69	37.265		
3,100.0	2,457.5	2,844.3	2,674.6	30.6	16.4	-149.47	-239.2	791.6	1,106.8	1,076.8	30.03	36.857		
3,200.0	2,539.7	2,938.0	2,759.3	31.6	17.2	-149.50	-252.2	829.3	1,140.5	1,109.0	31.45	36.269		
3,300.0	2,624.7	3,027.6	2,840.5	32.6	17.9	-149.40	-264.7	865.2	1,170.1	1,137.2	32.85	35.614		
3,400.0	2,712.3	3,100.0	2,906.9	33.4	18.5	-149.37	-274.1	892.5	1,196.6	1,162.6	34.01	35.185		
3,500.0	2,802.4	3,180.2	2,981.6	34.2	19.0	-149.30	-283.5	919.9	1,220.4	1,185.3	35.11	34.758		
3,600.0	2,894.6	3,257.4	3,054.7	34.8	19.4	-149.26	-291.7	943.5	1,241.6	1,205.5	36.08	34.414		
3,700.0	2,988.7	3,335.1	3,129.2	35.4	19.8	-149.21	-298.9	964.4	1,260.0	1,223.0	36.94	34.112		
3,800.0	3,084.4	3,413.4	3,205.1	35.9	20.1	-149.17	-305.1	982.5	1,275.6	1,237.9	37.68	33.849		
3,900.0	3,181.6	3,500.0	3,289.9	36.3	20.4	-149.10	-310.9	999.1	1,288.3	1,250.0	38.35	33.593		
4,000.0	3,279.8	3,571.1	3,360.0	36.6	20.6	-149.08	-314.6	1,010.0	1,298.2	1,259.4	38.81	33.447		
4,100.0	3,378.9	3,650.4	3,438.7	36.8	20.8	-149.03	-317.8	1,019.3	1,305.1	1,265.9	39.20	33.296		
4,200.0	3,478.5	3,730.0	3,518.0	36.9	20.9	-148.97	-320.0	1,025.5	1,309.2	1,269.7	39.47	33.172		
4,300.0	3,578.5	3,809.7	3,597.6	36.9	21.0	-148.91	-321.0	1,028.5	1,310.3	1,270.7	39.62	33.071		
4,400.0	3,678.5	3,900.2	3,688.2	37.0	21.0	-2.67	-321.1	1,028.9	1,310.2	1,270.4	39.75	32.963		
4,500.0	3,778.5	4,000.2	3,788.2	37.0	21.1	-2.67	-321.1	1,028.9	1,310.2	1,270.3	39.88	32.857		
4,600.0	3,878.5	4,100.2	3,888.2	37.0	21.1	-2.67	-321.1	1,028.9	1,310.2	1,270.2	40.01	32.750		
4,700.0	3,978.5	4,200.2	3,988.2	37.1	21.2	-2.67	-321.1	1,028.9	1,310.2	1,270.0	40.14	32.641		
4,800.0	4,078.5	4,300.2	4,088.2	37.1	21.2	-2.67	-321.1	1,028.9	1,310.2	1,269.9	40.27	32.531		
4,900.0	4,178.5	4,400.2	4,188.2	37.2	21.3	-2.67	-321.1	1,028.9	1,310.2	1,269.8	40.41	32.420		
5,000.0	4,278.5	4,500.2	4,288.2	37.2	21.4	-2.67	-321.1	1,028.9	1,310.2	1,269.6	40.55	32.307		

CC - Min centre to center distance or convergent point, SF - min separation factor, ES - min ellipse separation

Cathedral Energy Services

Anticollision Report

Company:	Caerus Oil & Gas (NAD 27)	Local Co-ordinate Reference:	Well Nolte 11C-24
Project:	Garfield County, CO	TVD Reference:	WELL @ 5108.1ft (Original Well Elev)
Reference Site:	S14-T7S-R96W	MD Reference:	WELL @ 5108.1ft (Original Well Elev)
Site Error:	0.0ft	North Reference:	True
Reference Well:	Nolte 11C-24	Survey Calculation Method:	Minimum Curvature
Well Error:	0.0ft	Output errors are at	2.00 sigma
Reference Wellbore	DD	Database:	USA EDM 5000 Multi Users DB
Reference Design:	Plan #3	Offset TVD Reference:	Offset Datum

Offset Design													Offset Site Error:	0.0 ft	
Survey Program: 0-MWD													Offset Well Error:		0.0 ft
Reference													Warning		
Offset				Semi Major Axis			Distance								
Measured Depth (ft)	Vertical Depth (ft)	Measured Depth (ft)	Vertical Depth (ft)	Reference (ft)	Offset (ft)	Highside Toolface (°)	Offset Wellbore Centre +N/-S (ft)	+E/-W (ft)	Between Centres (ft)	Between Ellipses (ft)	Total Uncertainty Axis	Separation Factor	Warning		
5,100.0	4,378.5	4,600.2	4,388.2	37.2	21.4	-2.67	-321.1	1,028.9	1,310.2	1,269.5	40.70	32.194			
5,200.0	4,478.5	4,700.2	4,488.2	37.3	21.5	-2.67	-321.1	1,028.9	1,310.2	1,269.3	40.84	32.079			
5,300.0	4,578.5	4,800.2	4,588.2	37.3	21.6	-2.67	-321.1	1,028.9	1,310.2	1,269.2	40.99	31.963			
5,400.0	4,678.5	4,900.2	4,688.2	37.4	21.6	-2.67	-321.1	1,028.9	1,310.2	1,269.0	41.14	31.846			
5,500.0	4,778.5	5,000.2	4,788.2	37.4	21.7	-2.67	-321.1	1,028.9	1,310.2	1,268.9	41.29	31.728			
5,600.0	4,878.5	5,100.2	4,888.2	37.5	21.8	-2.67	-321.1	1,028.9	1,310.2	1,268.7	41.45	31.609			
5,700.0	4,978.5	5,200.2	4,988.2	37.5	21.8	-2.67	-321.1	1,028.9	1,310.2	1,268.6	41.61	31.489			
5,800.0	5,078.5	5,300.2	5,088.2	37.6	21.9	-2.67	-321.1	1,028.9	1,310.2	1,268.4	41.77	31.369			
5,900.0	5,178.5	5,400.2	5,188.2	37.6	22.0	-2.67	-321.1	1,028.9	1,310.2	1,268.2	41.93	31.247			
6,000.0	5,278.5	5,500.2	5,288.2	37.7	22.1	-2.67	-321.1	1,028.9	1,310.2	1,268.1	42.09	31.125			
6,100.0	5,378.5	5,600.2	5,388.2	37.7	22.1	-2.67	-321.1	1,028.9	1,310.2	1,267.9	42.26	31.002			
6,200.0	5,478.5	5,700.2	5,488.2	37.8	22.2	-2.67	-321.1	1,028.9	1,310.2	1,267.7	42.43	30.878			
6,300.0	5,578.5	5,800.2	5,588.2	37.8	22.3	-2.67	-321.1	1,028.9	1,310.2	1,267.6	42.60	30.754			
6,341.5	5,620.0	5,841.7	5,629.7	37.8	22.3	-2.67	-321.1	1,028.9	1,310.2	1,267.5	42.67	30.702			

Cathedral Energy Services

Anticollision Report

Company:	Caerus Oil & Gas (NAD 27)	Local Co-ordinate Reference:	Well Nolte 11C-24
Project:	Garfield County, CO	TVD Reference:	WELL @ 5108.1ft (Original Well Elev)
Reference Site:	S14-T7S-R96W	MD Reference:	WELL @ 5108.1ft (Original Well Elev)
Site Error:	0.0ft	North Reference:	True
Reference Well:	Nolte 11C-24	Survey Calculation Method:	Minimum Curvature
Well Error:	0.0ft	Output errors are at	2.00 sigma
Reference Wellbore	DD	Database:	USA EDM 5000 Multi Users DB
Reference Design:	Plan #3	Offset TVD Reference:	Offset Datum

Offset Design S14-T7S-R96W - Nolte 14D-13 - DD - Plan #3													Offset Site Error:	0.0 ft	
Survey Program: 0-MWD													Offset Well Error:		0.0 ft
Reference		Offset		Semi Major Axis			Distance			Total Uncertainty Axis	Separation Factor	Warning			
Measured Depth (ft)	Vertical Depth (ft)	Measured Depth (ft)	Vertical Depth (ft)	Reference (ft)	Offset (ft)	Highside Toolface (°)	Offset Wellbore Centre +N/-S (ft)	+E/-W (ft)	Between Centres (ft)				Between Ellipses (ft)		
0.0	0.0	9.7	9.7	0.0	0.0	27.56	21.3	11.1	24.0						
100.0	100.0	109.7	109.7	0.1	0.1	27.56	21.3	11.1	24.0	23.7	0.29	82.975			
200.0	200.0	209.7	209.7	0.3	0.3	27.56	21.3	11.1	24.0	23.4	0.64	37.596 CC			
229.1	229.1	238.8	238.8	0.4	0.4	-118.91	21.3	11.1	24.0	23.3	0.74	32.501 ES			
300.0	300.0	309.7	309.7	0.5	0.5	-120.02	21.3	11.1	24.3	23.3	0.99	24.621			
400.0	399.8	409.6	409.6	0.7	0.7	-129.45	21.3	11.1	27.3	26.0	1.35	20.274			
500.0	499.3	509.9	509.8	0.9	0.9	-138.09	19.6	13.8	33.5	31.7	1.73	19.380			
600.0	598.0	610.4	610.0	1.2	1.1	-141.93	15.0	20.8	41.7	39.6	2.15	19.399			
700.0	695.8	711.1	709.7	1.6	1.3	-142.81	7.5	32.3	51.6	49.0	2.65	19.458			
800.0	792.4	811.9	808.8	2.1	1.7	-142.02	-2.8	48.2	63.1	59.8	3.28	19.249			
900.0	887.5	912.8	906.7	2.7	2.1	-140.35	-16.0	68.5	76.1	72.0	4.06	18.739			
1,000.0	980.9	1,013.8	1,003.2	3.4	2.7	-138.24	-31.9	93.1	90.7	85.6	5.03	18.027			
1,100.0	1,072.2	1,114.6	1,098.0	4.1	3.3	-135.95	-50.6	122.0	106.9	100.7	6.20	17.237			
1,200.0	1,161.3	1,215.3	1,190.8	5.0	4.0	-133.62	-72.0	154.9	124.8	117.2	7.58	16.460			
1,300.0	1,247.9	1,315.9	1,281.2	5.9	4.9	-131.33	-96.0	191.8	144.4	135.2	9.16	15.759			
1,400.0	1,331.8	1,414.2	1,367.8	6.9	5.7	-129.62	-121.2	230.7	166.1	155.3	10.83	15.335 SF			
1,500.0	1,412.6	1,511.0	1,453.1	8.0	6.6	-129.31	-146.2	269.2	191.1	178.6	12.45	15.348			
1,600.0	1,490.4	1,606.8	1,537.5	9.2	7.4	-129.95	-170.9	307.3	219.3	205.3	14.00	15.664			
1,700.0	1,564.7	1,701.4	1,620.8	10.5	8.3	-131.14	-195.2	344.8	250.9	235.5	15.47	16.217			
1,800.0	1,635.4	1,794.4	1,702.7	11.9	9.1	-132.63	-219.2	381.8	286.1	269.2	16.86	16.969			
1,900.0	1,702.3	1,885.6	1,783.1	13.3	9.9	-134.22	-242.7	418.1	325.0	306.9	18.17	17.893			
2,000.0	1,765.2	1,974.9	1,861.7	14.8	10.7	-135.80	-265.7	453.5	367.8	348.4	19.40	18.965			
2,100.0	1,824.0	2,061.8	1,938.3	16.4	11.5	-137.28	-288.1	488.1	414.6	394.0	20.56	20.165			
2,200.0	1,878.4	2,146.3	2,012.6	18.0	12.3	-138.61	-309.9	521.6	465.4	443.7	21.68	21.468			
2,300.0	1,928.8	2,228.2	2,084.8	19.7	13.0	-140.28	-331.0	554.2	519.9	497.3	22.64	22.963			
2,400.0	1,980.6	2,311.1	2,157.8	21.3	13.7	-143.31	-352.4	587.1	573.8	550.6	23.21	24.723			
2,500.0	2,036.9	2,396.6	2,233.1	22.8	14.5	-145.56	-374.4	621.1	624.4	600.5	23.92	26.104			
2,600.0	2,097.4	2,484.5	2,310.6	24.3	15.3	-147.20	-397.1	656.0	671.4	646.6	24.77	27.106			
2,700.0	2,162.0	2,574.6	2,389.9	25.7	16.1	-148.38	-420.3	691.8	714.5	688.8	25.75	27.750			
2,800.0	2,230.5	2,666.7	2,471.0	27.1	16.9	-149.18	-444.0	728.4	753.6	726.7	26.85	28.064			
2,900.0	2,302.7	2,760.4	2,553.5	28.4	17.8	-149.67	-468.2	765.6	788.5	760.4	28.07	28.087			
3,000.0	2,378.5	2,855.5	2,637.3	29.5	18.7	-149.88	-492.7	803.4	819.1	789.7	29.41	27.854			
3,100.0	2,457.5	2,950.0	2,720.5	30.6	19.5	-149.87	-517.1	840.9	845.4	814.6	30.84	27.418			
3,200.0	2,539.7	3,026.9	2,788.9	31.6	20.1	-149.84	-536.1	870.3	868.7	836.6	32.06	27.094			
3,300.0	2,624.7	3,100.0	2,855.3	32.6	20.7	-149.84	-552.9	896.1	890.0	856.8	33.17	26.832			
3,400.0	2,712.3	3,178.3	2,927.5	33.4	21.2	-149.81	-569.2	921.3	909.4	875.1	34.21	26.581			
3,500.0	2,802.4	3,254.1	2,998.7	34.2	21.7	-149.80	-583.5	943.4	926.7	891.6	35.14	26.373			
3,600.0	2,894.6	3,330.1	3,070.9	34.8	22.1	-149.79	-596.3	963.1	942.0	906.1	35.97	26.188			
3,700.0	2,988.7	3,400.0	3,138.2	35.4	22.4	-149.79	-606.7	979.1	955.3	918.6	36.68	26.047			
3,800.0	3,084.4	3,482.2	3,218.1	35.9	22.7	-149.76	-617.2	995.2	966.5	929.1	37.34	25.887			
3,900.0	3,181.6	3,558.5	3,292.9	36.3	23.0	-149.74	-625.2	1,007.6	975.6	937.7	37.86	25.767			
4,000.0	3,279.8	3,634.8	3,368.3	36.6	23.2	-149.71	-631.6	1,017.5	982.6	944.3	38.29	25.662			
4,100.0	3,378.9	3,700.0	3,433.1	36.8	23.3	-149.69	-635.8	1,023.9	987.5	948.9	38.60	25.586			
4,200.0	3,478.5	3,787.6	3,520.4	36.9	23.4	-149.64	-639.5	1,029.6	990.1	951.3	38.85	25.489			
4,300.0	3,578.5	3,864.1	3,596.8	36.9	23.5	-149.59	-640.9	1,031.8	990.7	951.7	38.97	25.423			
4,381.7	3,660.2	3,937.1	3,669.9	37.0	23.5	-149.58	-641.0	1,032.0	990.7	951.7	39.07	25.359			
4,400.0	3,678.5	3,955.4	3,688.2	37.0	23.5	-3.35	-641.0	1,032.0	990.6	951.5	39.10	25.337			
4,500.0	3,778.5	4,055.4	3,788.2	37.0	23.6	-3.35	-641.0	1,032.0	990.6	951.3	39.23	25.252			
4,600.0	3,878.5	4,155.4	3,888.2	37.0	23.6	-3.35	-641.0	1,032.0	990.6	951.2	39.36	25.167			
4,700.0	3,978.5	4,255.4	3,988.2	37.1	23.7	-3.35	-641.0	1,032.0	990.6	951.1	39.50	25.080			
4,800.0	4,078.5	4,355.4	4,088.2	37.1	23.7	-3.35	-641.0	1,032.0	990.6	950.9	39.63	24.992			
4,900.0	4,178.5	4,455.4	4,188.2	37.2	23.8	-3.35	-641.0	1,032.0	990.6	950.8	39.78	24.903			

CC - Min centre to center distance or convergent point, SF - min separation factor, ES - min ellipse separation

Cathedral Energy Services

Anticollision Report

Company:	Caerus Oil & Gas (NAD 27)	Local Co-ordinate Reference:	Well Nolte 11C-24
Project:	Garfield County, CO	TVD Reference:	WELL @ 5108.1ft (Original Well Elev)
Reference Site:	S14-T7S-R96W	MD Reference:	WELL @ 5108.1ft (Original Well Elev)
Site Error:	0.0ft	North Reference:	True
Reference Well:	Nolte 11C-24	Survey Calculation Method:	Minimum Curvature
Well Error:	0.0ft	Output errors are at	2.00 sigma
Reference Wellbore	DD	Database:	USA EDM 5000 Multi Users DB
Reference Design:	Plan #3	Offset TVD Reference:	Offset Datum

Offset Design													Offset Site Error:	0.0 ft	
Survey Program: 0-MWD													Offset Well Error:		0.0 ft
Reference															
Offset				Semi Major Axis			Distance								
Measured Depth (ft)	Vertical Depth (ft)	Measured Depth (ft)	Vertical Depth (ft)	Reference (ft)	Offset (ft)	Highside Toolface (°)	Offset Wellbore Centre +N/-S (ft)	+E/-W (ft)	Between Centres (ft)	Between Ellipses (ft)	Total Uncertainty Axis	Separation Factor	Warning		
5,000.0	4,278.5	4,555.4	4,288.2	37.2	23.8	-3.35	-641.0	1,032.0	990.6	950.6	39.92	24.814			
5,100.0	4,378.5	4,655.4	4,388.2	37.2	23.9	-3.35	-641.0	1,032.0	990.6	950.5	40.07	24.723			
5,200.0	4,478.5	4,755.4	4,488.2	37.3	24.0	-3.35	-641.0	1,032.0	990.6	950.4	40.22	24.632			
5,300.0	4,578.5	4,855.4	4,588.2	37.3	24.0	-3.35	-641.0	1,032.0	990.6	950.2	40.37	24.539			
5,400.0	4,678.5	4,955.4	4,688.2	37.4	24.1	-3.35	-641.0	1,032.0	990.6	950.0	40.52	24.446			
5,500.0	4,778.5	5,055.4	4,788.2	37.4	24.2	-3.35	-641.0	1,032.0	990.6	949.9	40.68	24.352			
5,600.0	4,878.5	5,155.4	4,888.2	37.5	24.2	-3.35	-641.0	1,032.0	990.6	949.7	40.84	24.258			
5,700.0	4,978.5	5,255.4	4,988.2	37.5	24.3	-3.35	-641.0	1,032.0	990.6	949.6	41.00	24.163			
5,800.0	5,078.5	5,355.4	5,088.2	37.6	24.3	-3.35	-641.0	1,032.0	990.6	949.4	41.16	24.067			
5,900.0	5,178.5	5,455.4	5,188.2	37.6	24.4	-3.35	-641.0	1,032.0	990.6	949.2	41.32	23.970			
6,000.0	5,278.5	5,555.4	5,288.2	37.7	24.5	-3.35	-641.0	1,032.0	990.6	949.1	41.49	23.873			
6,100.0	5,378.5	5,655.4	5,388.2	37.7	24.6	-3.35	-641.0	1,032.0	990.6	948.9	41.66	23.776			
6,200.0	5,478.5	5,755.4	5,488.2	37.8	24.6	-3.35	-641.0	1,032.0	990.6	948.7	41.84	23.678			
6,300.0	5,578.5	5,855.4	5,588.2	37.8	24.7	-3.35	-641.0	1,032.0	990.6	948.6	42.01	23.580			
6,341.5	5,620.0	5,896.9	5,629.7	37.8	24.7	-3.35	-641.0	1,032.0	990.6	948.5	42.08	23.539			

Cathedral Energy Services

Anticollision Report

Company:	Caerus Oil & Gas (NAD 27)	Local Co-ordinate Reference:	Well Nolte 11C-24
Project:	Garfield County, CO	TVD Reference:	WELL @ 5108.1ft (Original Well Elev)
Reference Site:	S14-T7S-R96W	MD Reference:	WELL @ 5108.1ft (Original Well Elev)
Site Error:	0.0ft	North Reference:	True
Reference Well:	Nolte 11C-24	Survey Calculation Method:	Minimum Curvature
Well Error:	0.0ft	Output errors are at	2.00 sigma
Reference Wellbore	DD	Database:	USA EDM 5000 Multi Users DB
Reference Design:	Plan #3	Offset TVD Reference:	Offset Datum

Offset Design													Offset Site Error:	0.0 ft	
Survey Program: 0-MWD													Offset Well Error:		0.0 ft
S14-T7S-R96W - Nolte 43A-14 - DD - Plan #3															
Reference		Offset		Semi Major Axis			Offset Wellbore Centre		Distance		Total	Separation	Warning		
Measured Depth (ft)	Vertical Depth (ft)	Measured Depth (ft)	Vertical Depth (ft)	Reference (ft)	Offset (ft)	Highside Tooface (")	+N/-S (ft)	+E/-W (ft)	Between Centres (ft)	Between Ellipses (ft)	Uncertainty Axis	Factor			
0.0	0.0	9.7	9.7	0.0	0.0	15.75	47.2	13.3	49.0						
100.0	100.0	109.7	109.7	0.1	0.1	15.75	47.2	13.3	49.0	48.7	0.29	169.359			
200.0	200.0	209.7	209.7	0.3	0.3	15.75	47.2	13.3	49.0	48.4	0.64	76.765 CC			
237.5	237.5	247.2	247.2	0.4	0.4	-130.64	47.2	13.3	49.1	48.4	0.77	63.855 ES			
300.0	300.0	309.5	309.5	0.5	0.5	-131.05	47.2	13.3	49.5	48.5	0.99	50.091			
400.0	399.8	406.7	406.6	0.7	0.7	-136.22	50.1	12.7	55.9	54.5	1.34	41.689 SF			
500.0	499.3	502.0	501.6	0.9	0.9	-143.79	57.6	11.3	71.6	69.9	1.70	42.148			
600.0	598.0	594.0	592.9	1.2	1.1	-150.25	69.3	9.0	97.5	95.4	2.05	47.479			
700.0	695.8	681.7	679.1	1.6	1.4	-154.75	84.5	6.0	133.1	130.7	2.40	55.568			
800.0	792.4	764.0	759.4	2.1	1.8	-157.65	102.2	2.6	177.8	175.0	2.73	65.161			
900.0	887.5	840.3	833.1	2.7	2.1	-159.47	121.7	-1.2	230.7	227.7	3.06	75.505			
1,000.0	980.9	910.1	899.8	3.4	2.5	-160.55	142.0	-5.2	291.1	287.7	3.38	86.108			
1,100.0	1,072.2	973.3	959.5	4.1	2.9	-161.12	162.5	-9.2	358.1	354.4	3.71	96.562			
1,200.0	1,161.3	1,029.9	1,012.2	5.0	3.3	-161.29	182.4	-13.1	431.0	427.0	4.05	106.499			
1,300.0	1,247.9	1,079.9	1,058.4	5.9	3.6	-161.13	201.3	-16.8	509.0	504.6	4.41	115.499			
1,400.0	1,331.8	1,123.6	1,098.3	6.9	3.9	-160.63	218.8	-20.2	591.6	586.7	4.81	123.043			
1,500.0	1,412.6	1,161.3	1,132.4	8.0	4.2	-159.78	234.6	-23.3	677.9	672.6	5.28	128.507			
1,600.0	1,490.4	1,200.0	1,167.1	9.2	4.5	-158.70	251.5	-26.6	767.5	761.7	5.84	131.512			
1,700.0	1,564.7	1,220.1	1,184.9	10.5	4.7	-156.65	260.5	-28.3	859.7	853.1	6.61	130.115			
1,800.0	1,635.4	1,241.9	1,204.2	11.9	4.9	-153.96	270.5	-30.3	954.2	946.6	7.65	124.661			
1,900.0	1,702.3	1,259.1	1,219.3	13.3	5.0	-149.97	278.6	-31.9	1,050.4	1,041.3	9.18	114.377			
2,000.0	1,765.2	1,272.2	1,230.7	14.8	5.2	-143.76	284.8	-33.1	1,148.0	1,136.5	11.52	99.630			
2,100.0	1,824.0	1,300.0	1,254.9	16.4	5.4	-136.56	298.3	-35.7	1,246.8	1,232.3	14.48	86.121			
2,200.0	1,878.4	1,300.0	1,254.9	18.0	5.4	-119.35	298.3	-35.7	1,345.9	1,326.1	19.79	68.000			

CC - Min centre to center distance or convergent point, SF - min separation factor, ES - min ellipse separation

Cathedral Energy Services

Anticollision Report

Company:	Caerus Oil & Gas (NAD 27)	Local Co-ordinate Reference:	Well Nolte 11C-24
Project:	Garfield County, CO	TVD Reference:	WELL @ 5108.1ft (Original Well Elev)
Reference Site:	S14-T7S-R96W	MD Reference:	WELL @ 5108.1ft (Original Well Elev)
Site Error:	0.0ft	North Reference:	True
Reference Well:	Nolte 11C-24	Survey Calculation Method:	Minimum Curvature
Well Error:	0.0ft	Output errors are at	2.00 sigma
Reference Wellbore	DD	Database:	USA EDM 5000 Multi Users DB
Reference Design:	Plan #3	Offset TVD Reference:	Offset Datum

Offset Design													Offset Site Error:	0.0 ft	
Survey Program: 0-MWD													Offset Well Error:		0.0 ft
S14-T7S-R96W - Nolte 43B-14 - DD - Plan #3															
Reference		Offset		Semi Major Axis			Distance				Total Uncertainty Axis	Separation Factor	Warning		
Measured Depth (ft)	Vertical Depth (ft)	Measured Depth (ft)	Vertical Depth (ft)	Reference (ft)	Offset (ft)	Highside Tooface (°)	Offset Wellbore Centre +N/-S (ft)	+E/-W (ft)	Between Centres (ft)	Between Ellipses (ft)					
0.0	0.0	9.7	9.7	0.0	0.0	13.47	40.1	9.6	41.2						
100.0	100.0	109.7	109.7	0.1	0.1	13.47	40.1	9.6	41.2	40.9	0.29	142.371			
200.0	200.0	209.7	209.7	0.3	0.3	13.47	40.1	9.6	41.2	40.6	0.64	64.547 CC			
228.2	228.2	237.9	237.9	0.4	0.4	-132.86	40.1	9.6	41.3	40.6	0.74	56.021 ES			
300.0	300.0	309.7	309.7	0.5	0.5	-133.41	40.1	9.6	41.7	40.7	0.99	42.180			
400.0	399.8	408.2	408.2	0.7	0.7	-138.44	40.9	9.4	46.3	44.9	1.34	34.494 SF			
500.0	499.3	504.4	504.3	0.9	0.9	-146.54	46.2	8.2	59.9	58.2	1.70	35.287			
600.0	598.0	597.6	596.9	1.2	1.1	-153.42	55.7	5.9	83.8	81.8	2.05	40.945			
700.0	695.8	686.7	684.9	1.6	1.3	-158.00	68.9	2.8	117.7	115.3	2.38	49.372			
800.0	792.4	770.5	767.1	2.1	1.6	-160.83	85.0	-0.9	160.7	158.0	2.71	59.348			
900.0	887.5	848.4	842.7	2.7	2.0	-162.55	103.0	-5.2	212.1	209.1	3.02	70.165			
1,000.0	980.9	919.8	911.4	3.4	2.3	-163.55	122.2	-9.7	271.2	267.9	3.33	81.376			
1,100.0	1,072.2	984.7	973.0	4.1	2.7	-164.07	141.8	-14.3	337.0	333.4	3.64	92.621			
1,200.0	1,161.3	1,042.7	1,027.6	5.0	3.1	-164.23	161.1	-18.8	408.9	405.0	3.95	103.562			
1,300.0	1,247.9	1,100.0	1,080.9	5.9	3.4	-164.20	181.6	-23.6	486.2	481.9	4.27	113.790			
1,400.0	1,331.8	1,139.2	1,116.9	6.9	3.7	-163.70	196.6	-27.1	567.9	563.3	4.62	123.013			
1,500.0	1,412.6	1,178.1	1,152.4	8.0	4.0	-163.01	212.2	-30.7	653.7	648.7	5.01	130.470			
1,600.0	1,490.4	1,200.0	1,172.2	9.2	4.2	-161.68	221.2	-32.9	742.9	737.4	5.50	135.035			
1,700.0	1,564.7	1,238.9	1,207.2	10.5	4.5	-160.43	237.9	-36.8	834.7	828.6	6.09	137.020			
1,800.0	1,635.4	1,261.6	1,227.4	11.9	4.7	-158.23	247.9	-39.1	928.9	922.0	6.93	134.122			
1,900.0	1,702.3	1,279.6	1,243.4	13.3	4.8	-154.95	256.0	-41.0	1,025.0	1,016.9	8.15	125.775			
2,000.0	1,765.2	1,300.0	1,261.3	14.8	5.0	-150.39	265.4	-43.2	1,122.5	1,112.6	9.94	112.962			
2,100.0	1,824.0	1,300.0	1,261.3	16.4	5.0	-140.62	265.4	-43.2	1,221.0	1,207.7	13.36	91.385			
2,200.0	1,878.4	1,300.0	1,261.3	18.0	5.0	-122.06	265.4	-43.2	1,320.3	1,301.2	19.06	69.276			

CC - Min centre to center distance or convergent point, SF - min separation factor, ES - min ellipse separation

Cathedral Energy Services

Anticollision Report

Company:	Caerus Oil & Gas (NAD 27)	Local Co-ordinate Reference:	Well Nolte 11C-24
Project:	Garfield County, CO	TVD Reference:	WELL @ 5108.1ft (Original Well Elev)
Reference Site:	S14-T7S-R96W	MD Reference:	WELL @ 5108.1ft (Original Well Elev)
Site Error:	0.0ft	North Reference:	True
Reference Well:	Nolte 11C-24	Survey Calculation Method:	Minimum Curvature
Well Error:	0.0ft	Output errors are at	2.00 sigma
Reference Wellbore	DD	Database:	USA EDM 5000 Multi Users DB
Reference Design:	Plan #3	Offset TVD Reference:	Offset Datum

Offset Design													Offset Site Error:	0.0 ft		
Survey Program: 0-MWD													Offset Well Error:	0.0 ft		
Reference																
Offset				Semi Major Axis			Distance									
Measured Depth (ft)	Vertical Depth (ft)	Measured Depth (ft)	Vertical Depth (ft)	Reference (ft)	Offset (ft)	Highside Toolface (°)	Offset Wellbore Centre +N/-S (ft)	+E/-W (ft)	Between Centres (ft)	Between Ellipses (ft)	Total Uncertainty Axis	Separation Factor	Warning			
0.0	0.0	9.7	9.7	0.0	0.0	10.19	33.0	5.9	33.5							
100.0	100.0	109.7	109.7	0.1	0.1	10.19	33.0	5.9	33.5	33.2	0.29	115.723				
200.0	200.0	209.7	209.7	0.3	0.3	10.19	33.0	5.9	33.5	32.9	0.64	52.481 CC				
228.2	228.2	237.9	237.9	0.4	0.4	-136.16	33.0	5.9	33.6	32.9	0.74	45.572 ES				
300.0	300.0	309.7	309.7	0.5	0.5	-136.79	33.0	5.9	34.0	33.0	0.99	34.411				
400.0	399.8	409.4	409.4	0.7	0.7	-142.13	33.0	5.9	38.0	36.7	1.34	28.315 SF				
500.0	499.3	506.4	506.3	0.9	0.8	-150.65	35.8	4.9	49.6	47.9	1.70	29.247				
600.0	598.0	600.0	599.6	1.2	1.0	-157.99	42.8	2.3	71.6	69.5	2.04	35.128				
700.0	695.8	691.0	689.8	1.6	1.3	-162.78	53.8	-1.7	103.6	101.3	2.36	43.827				
800.0	792.4	776.2	773.7	2.1	1.5	-165.62	67.7	-6.7	145.1	142.4	2.68	54.221				
900.0	887.5	855.5	851.2	2.7	1.9	-167.30	83.8	-12.6	195.2	192.2	2.97	65.638				
1,000.0	980.9	928.3	921.6	3.4	2.2	-168.30	101.2	-19.0	253.0	249.8	3.26	77.692				
1,100.0	1,072.2	1,000.0	990.2	4.1	2.6	-168.93	120.8	-26.1	317.9	314.4	3.53	89.962				
1,200.0	1,161.3	1,057.8	1,045.0	5.0	2.9	-169.16	138.2	-32.5	388.8	385.0	3.80	102.441				
1,300.0	1,247.9	1,123.9	1,107.4	5.9	3.2	-169.37	158.4	-39.9	463.8	459.7	4.07	114.051				
1,400.0	1,331.8	1,186.0	1,166.1	6.9	3.6	-169.45	177.4	-46.8	542.0	537.7	4.34	125.019				
1,500.0	1,412.6	1,243.8	1,220.8	8.0	3.9	-169.39	195.1	-53.3	623.5	618.9	4.61	135.251				
1,600.0	1,490.4	1,297.4	1,271.4	9.2	4.2	-169.21	211.5	-59.3	707.8	702.9	4.89	144.609				
1,700.0	1,564.7	1,346.5	1,317.8	10.5	4.5	-168.88	226.5	-64.8	794.8	789.6	5.20	152.762				
1,800.0	1,635.4	1,390.9	1,359.9	11.9	4.8	-168.37	240.1	-69.7	884.2	878.7	5.55	159.310				
1,900.0	1,702.3	1,430.7	1,397.5	13.3	5.0	-167.64	252.3	-74.2	975.9	969.9	5.97	163.590				
2,000.0	1,765.2	1,465.6	1,430.5	14.8	5.2	-166.60	263.0	-78.1	1,069.5	1,063.0	6.49	164.733				
2,100.0	1,824.0	1,495.6	1,458.8	16.4	5.4	-165.09	272.1	-81.4	1,164.7	1,157.5	7.21	161.560				
2,200.0	1,878.4	1,520.5	1,482.4	18.0	5.5	-162.82	279.8	-84.2	1,261.4	1,253.2	8.27	152.612				

CC - Min centre to center distance or convergent point, SF - min separation factor, ES - min ellipse separation

Cathedral Energy Services

Anticollision Report

Company:	Caerus Oil & Gas (NAD 27)	Local Co-ordinate Reference:	Well Nolte 11C-24
Project:	Garfield County, CO	TVD Reference:	WELL @ 5108.1ft (Original Well Elev)
Reference Site:	S14-T7S-R96W	MD Reference:	WELL @ 5108.1ft (Original Well Elev)
Site Error:	0.0ft	North Reference:	True
Reference Well:	Nolte 11C-24	Survey Calculation Method:	Minimum Curvature
Well Error:	0.0ft	Output errors are at	2.00 sigma
Reference Wellbore	DD	Database:	USA EDM 5000 Multi Users DB
Reference Design:	Plan #3	Offset TVD Reference:	Offset Datum

Offset Design													Offset Site Error:	0.0 ft	
Survey Program: 0-MWD													Offset Well Error:		0.0 ft
Reference															
Offset				Semi Major Axis			Distance								
Measured Depth (ft)	Vertical Depth (ft)	Measured Depth (ft)	Vertical Depth (ft)	Reference (ft)	Offset (ft)	Highside Toolface (°)	Offset Wellbore Centre +N/-S (ft)	+E/-W (ft)	Between Centres (ft)	Between Ellipses (ft)	Total Uncertainty Axis	Separation Factor	Warning		
0.0	0.0	9.7	9.7	0.0	0.0	4.92	25.9	2.2	26.0						
100.0	100.0	109.7	109.7	0.1	0.1	4.92	25.9	2.2	26.0	25.7	0.29	89.676			
200.0	200.0	209.7	209.7	0.3	0.3	4.92	25.9	2.2	26.0	25.4	0.64	40.686	CC		
228.2	228.2	237.9	237.9	0.4	0.4	-141.45	25.9	2.2	26.1	25.3	0.74	35.366	ES		
300.0	300.0	309.7	309.7	0.5	0.5	-142.18	25.9	2.2	26.5	25.5	0.99	26.831			
400.0	399.8	409.5	409.5	0.7	0.7	-148.09	25.9	2.2	30.8	29.5	1.34	22.987	SF		
500.0	499.3	508.2	508.2	0.9	0.8	-156.11	26.4	1.9	40.6	38.9	1.69	24.020			
600.0	598.0	604.7	604.6	1.2	1.0	-163.21	29.5	0.2	58.9	56.9	2.03	28.997			
700.0	695.8	698.5	698.2	1.6	1.2	-167.91	35.3	-3.0	85.8	83.5	2.36	36.433			
800.0	792.4	788.7	787.9	2.1	1.4	-170.80	43.3	-7.6	121.0	118.4	2.67	45.394			
900.0	887.5	874.6	873.0	2.7	1.6	-172.60	53.3	-13.2	164.0	161.1	2.96	55.385			
1,000.0	980.9	955.6	953.0	3.4	1.9	-173.74	64.7	-19.6	214.3	211.0	3.24	66.136			
1,100.0	1,072.2	1,031.2	1,027.2	4.1	2.1	-174.49	77.1	-26.6	271.3	267.8	3.50	77.492			
1,200.0	1,161.3	1,100.0	1,094.4	5.0	2.4	-174.97	89.9	-33.7	334.6	330.8	3.74	89.399			
1,300.0	1,247.9	1,165.3	1,157.9	5.9	2.7	-175.29	103.4	-41.3	403.5	399.5	3.97	101.577			
1,400.0	1,331.8	1,223.5	1,214.1	6.9	2.9	-175.47	116.4	-48.6	477.6	473.4	4.18	114.144			
1,500.0	1,412.6	1,275.7	1,264.3	8.0	3.2	-175.55	128.9	-55.7	556.3	551.9	4.38	126.935			
1,600.0	1,490.4	1,322.0	1,308.6	9.2	3.4	-175.54	140.7	-62.3	639.1	634.5	4.57	139.838			
1,700.0	1,564.7	1,362.6	1,347.3	10.5	3.6	-175.43	151.6	-68.4	725.5	720.7	4.75	152.683			
1,800.0	1,635.4	1,398.4	1,381.2	11.9	3.8	-175.23	161.5	-74.0	815.0	810.1	4.93	165.250			
1,900.0	1,702.3	1,437.7	1,418.3	13.3	4.1	-174.99	172.6	-80.2	906.9	901.8	5.13	176.951			
2,000.0	1,765.2	1,472.1	1,450.9	14.8	4.3	-174.60	182.3	-85.7	1,000.8	995.4	5.33	187.616			
2,100.0	1,824.0	1,501.6	1,478.8	16.4	4.4	-174.02	190.7	-90.3	1,096.3	1,090.7	5.58	196.438			
2,200.0	1,878.4	1,526.0	1,501.9	18.0	4.6	-173.10	197.6	-94.2	1,193.2	1,187.3	5.91	201.817			
2,300.0	1,928.8	1,545.7	1,520.5	19.7	4.7	-172.50	203.1	-97.4	1,291.3	1,285.0	6.28	205.765			

CC - Min centre to center distance or covergent point, SF - min separation factor, ES - min ellipse separation

Cathedral Energy Services

Anticollision Report

Company:	Caerus Oil & Gas (NAD 27)	Local Co-ordinate Reference:	Well Nolte 11C-24
Project:	Garfield County, CO	TVD Reference:	WELL @ 5108.1ft (Original Well Elev)
Reference Site:	S14-T7S-R96W	MD Reference:	WELL @ 5108.1ft (Original Well Elev)
Site Error:	0.0ft	North Reference:	True
Reference Well:	Nolte 11C-24	Survey Calculation Method:	Minimum Curvature
Well Error:	0.0ft	Output errors are at	2.00 sigma
Reference Wellbore	DD	Database:	USA EDM 5000 Multi Users DB
Reference Design:	Plan #3	Offset TVD Reference:	Offset Datum

Offset Design													Offset Site Error:	0.0 ft	
Survey Program: 0-MWD													Offset Well Error:		0.0 ft
Reference															
Offset				Semi Major Axis			Distance								
Measured Depth (ft)	Vertical Depth (ft)	Measured Depth (ft)	Vertical Depth (ft)	Reference (ft)	Offset (ft)	Highside Toolface (°)	Offset Wellbore Centre +N/-S (ft)	+E/-W (ft)	Between Centres (ft)	Between Ellipses (ft)	Total Uncertainty Axis	Separation Factor	Warning		
0.0	0.0	9.7	9.7	0.0	0.0	-4.47	18.8	-1.5	18.9						
100.0	100.0	109.7	109.7	0.1	0.1	-4.47	18.8	-1.5	18.9	18.6	0.29	65.034			
200.0	200.0	209.7	209.7	0.3	0.3	-4.47	18.8	-1.5	18.9	18.2	0.64	29.514	CC		
228.1	228.1	237.8	237.8	0.4	0.4	-150.85	18.8	-1.5	19.0	18.2	0.74	25.710	ES		
300.0	300.0	309.7	309.7	0.5	0.5	-151.63	18.8	-1.5	19.4	18.4	0.99	19.669			
400.0	399.8	409.5	409.5	0.7	0.7	-157.48	18.8	-1.5	24.2	22.8	1.34	18.066	SF		
500.0	499.3	508.9	508.9	0.9	0.8	-164.16	18.8	-1.5	34.1	32.4	1.68	20.227			
600.0	598.0	605.5	605.4	1.2	1.0	-170.94	20.2	-4.0	51.7	49.7	2.02	25.600			
700.0	695.8	700.0	699.6	1.6	1.2	-176.53	24.0	-10.6	78.9	76.6	2.34	33.670			
800.0	792.4	791.2	790.2	2.1	1.4	179.94	29.2	-19.6	114.4	111.8	2.66	43.022			
900.0	887.5	882.5	880.9	2.7	1.6	178.02	34.4	-28.8	155.1	152.1	2.97	52.206			
1,000.0	980.9	971.5	969.3	3.4	1.8	176.92	39.5	-37.8	200.6	197.3	3.27	61.282			
1,100.0	1,072.2	1,058.0	1,055.2	4.1	2.1	176.26	44.5	-46.5	250.7	247.1	3.56	70.321			
1,200.0	1,161.3	1,141.8	1,138.4	5.0	2.3	175.83	49.3	-54.9	305.2	301.4	3.85	79.383			
1,300.0	1,247.9	1,222.6	1,218.7	5.9	2.5	175.54	53.9	-63.1	364.1	360.0	4.11	88.509			
1,400.0	1,331.8	1,300.2	1,295.8	6.9	2.7	175.32	58.4	-70.9	427.1	422.7	4.37	97.727			
1,500.0	1,412.6	1,374.5	1,369.6	8.0	2.9	175.14	62.6	-78.4	494.1	489.4	4.62	107.042			
1,600.0	1,490.4	1,445.1	1,439.8	9.2	3.1	174.98	66.7	-85.5	564.8	560.0	4.85	116.453			
1,700.0	1,564.7	1,512.0	1,506.2	10.5	3.2	174.82	70.5	-92.2	639.1	634.1	5.08	125.929			
1,800.0	1,635.4	1,574.9	1,568.7	11.9	3.4	174.65	74.1	-98.6	716.9	711.6	5.29	135.409			
1,900.0	1,702.3	1,633.7	1,627.0	13.3	3.5	174.44	77.5	-104.5	797.8	792.2	5.51	144.798			
2,000.0	1,765.2	1,688.1	1,681.1	14.8	3.7	174.20	80.6	-109.9	881.6	875.9	5.73	153.949			
2,100.0	1,824.0	1,738.1	1,730.7	16.4	3.8	173.90	83.5	-115.0	968.2	962.2	5.95	162.637			
2,200.0	1,878.4	1,783.5	1,775.8	18.0	3.9	173.51	86.1	-119.6	1,057.2	1,051.0	6.20	170.533			
2,300.0	1,928.8	1,824.5	1,816.6	19.7	4.1	173.35	88.5	-123.7	1,148.4	1,141.9	6.47	177.380			
2,400.0	1,980.6	1,867.2	1,858.9	21.3	4.2	174.25	90.9	-128.0	1,238.8	1,232.1	6.76	183.193			
2,500.0	2,036.9	1,914.5	1,905.9	22.8	4.3	174.92	93.6	-132.7	1,326.9	1,319.8	7.09	187.262			

CC - Min centre to center distance or covergent point, SF - min separation factor, ES - min ellipse separation

Cathedral Energy Services

Anticollision Report

Company:	Caerus Oil & Gas (NAD 27)	Local Co-ordinate Reference:	Well Nolte 11C-24
Project:	Garfield County, CO	TVD Reference:	WELL @ 5108.1ft (Original Well Elev)
Reference Site:	S14-T7S-R96W	MD Reference:	WELL @ 5108.1ft (Original Well Elev)
Site Error:	0.0ft	North Reference:	True
Reference Well:	Nolte 11C-24	Survey Calculation Method:	Minimum Curvature
Well Error:	0.0ft	Output errors are at	2.00 sigma
Reference Wellbore	DD	Database:	USA EDM 5000 Multi Users DB
Reference Design:	Plan #3	Offset TVD Reference:	Offset Datum

Offset Design													Offset Site Error:	0.0 ft	
Survey Program: 0-MWD													Offset Well Error:		0.0 ft
Reference															
Offset				Semi Major Axis			Distance								
Measured Depth (ft)	Vertical Depth (ft)	Measured Depth (ft)	Vertical Depth (ft)	Reference (ft)	Offset (ft)	Highside Tooface (")	Offset Wellbore Centre +N/-S (ft)	+E/-W (ft)	Between Centres (ft)	Between Ellipses (ft)	Total Uncertainty Axis	Separation Factor	Warning		
0.0	0.0	9.7	9.7	0.0	0.0	-23.81	11.7	-5.2	12.8						
100.0	100.0	109.7	109.7	0.1	0.1	-23.81	11.7	-5.2	12.8	12.5	0.29	44.114			
200.0	200.0	209.7	209.7	0.3	0.3	-23.81	11.7	-5.2	12.8	12.2	0.64	20.027 CC, ES			
227.8	227.8	237.5	237.5	0.4	0.4	-170.12	11.7	-5.2	12.9	12.2	0.74	17.520			
300.0	300.0	309.7	309.7	0.5	0.5	-170.52	11.7	-5.2	13.4	12.5	0.99	13.610 SF			
400.0	399.8	409.5	409.5	0.7	0.7	-173.22	11.7	-5.2	18.6	17.3	1.34	13.956			
500.0	499.3	508.3	508.3	0.9	0.8	178.85	11.2	-8.2	30.2	28.5	1.68	17.956			
600.0	598.0	606.4	606.0	1.2	1.0	170.57	9.4	-15.8	49.3	47.2	2.04	24.117			
700.0	695.8	704.7	703.7	1.6	1.3	164.51	3.7	-24.9	72.2	69.7	2.45	29.492			
800.0	792.4	800.8	799.1	2.1	1.5	161.62	-3.0	-34.0	99.7	96.8	2.88	34.661			
900.0	887.5	895.4	893.1	2.7	1.7	160.60	-9.7	-43.0	132.0	128.7	3.32	39.770			
1,000.0	980.9	988.3	985.3	3.4	2.0	160.43	-16.2	-51.8	169.0	165.2	3.77	44.831			
1,100.0	1,072.2	1,079.2	1,075.6	4.1	2.2	160.63	-22.6	-60.4	210.5	206.3	4.22	49.877			
1,200.0	1,161.3	1,167.9	1,163.7	5.0	2.4	160.98	-28.8	-68.8	256.5	251.9	4.67	54.933			
1,300.0	1,247.9	1,254.2	1,249.4	5.9	2.7	161.37	-34.9	-77.0	306.9	301.8	5.11	60.006			
1,400.0	1,331.8	1,337.8	1,332.4	6.9	2.9	161.74	-40.7	-84.9	361.6	356.0	5.56	65.089			
1,500.0	1,412.6	1,418.4	1,412.5	8.0	3.1	162.06	-46.4	-92.6	420.4	414.4	5.99	70.159			
1,600.0	1,490.4	1,496.0	1,489.5	9.2	3.3	162.30	-51.8	-99.9	483.3	476.9	6.43	75.178			
1,700.0	1,564.7	1,570.1	1,563.1	10.5	3.5	162.45	-57.0	-107.0	550.0	543.2	6.87	80.088			
1,800.0	1,635.4	1,640.7	1,633.2	11.9	3.7	162.51	-62.0	-113.7	620.5	613.2	7.32	84.815			
1,900.0	1,702.3	1,707.6	1,699.6	13.3	3.9	162.45	-66.7	-120.0	694.5	686.7	7.78	89.261			
2,000.0	1,765.2	1,770.5	1,762.1	14.8	4.0	162.28	-71.1	-126.0	771.8	763.5	8.27	93.300			
2,100.0	1,824.0	1,829.3	1,820.5	16.4	4.2	161.96	-75.2	-131.5	852.3	843.5	8.81	96.778			
2,200.0	1,878.4	1,883.9	1,874.7	18.0	4.3	161.48	-79.1	-136.7	935.7	926.3	9.40	99.507			
2,300.0	1,928.8	1,934.4	1,924.8	19.7	4.5	161.49	-82.6	-141.5	1,021.6	1,011.6	9.95	102.653			
2,400.0	1,980.6	1,986.4	1,976.4	21.3	4.6	163.69	-86.3	-146.4	1,106.7	1,096.6	10.08	109.798			
2,500.0	2,036.9	2,042.7	2,032.4	22.8	4.8	165.37	-90.2	-151.7	1,189.1	1,178.8	10.29	115.568			
2,600.0	2,097.4	2,103.2	2,092.5	24.3	4.9	166.67	-94.5	-157.5	1,268.5	1,258.0	10.57	120.065			
2,700.0	2,162.0	2,167.8	2,156.6	25.7	5.1	167.68	-99.0	-163.6	1,344.8	1,333.9	10.90	123.428			

Cathedral Energy Services

Anticollision Report

Company:	Caerus Oil & Gas (NAD 27)	Local Co-ordinate Reference:	Well Nolte 11C-24
Project:	Garfield County, CO	TVD Reference:	WELL @ 5108.1ft (Original Well Elev)
Reference Site:	S14-T7S-R96W	MD Reference:	WELL @ 5108.1ft (Original Well Elev)
Site Error:	0.0ft	North Reference:	True
Reference Well:	Nolte 11C-24	Survey Calculation Method:	Minimum Curvature
Well Error:	0.0ft	Output errors are at	2.00 sigma
Reference Wellbore	DD	Database:	USA EDM 5000 Multi Users DB
Reference Design:	Plan #3	Offset TVD Reference:	Offset Datum

Offset Design													Offset Site Error:	0.0 ft	
Survey Program: 0-MWD													Offset Well Error:		0.0 ft
Reference															
Offset				Semi Major Axis			Distance								
Measured Depth (ft)	Vertical Depth (ft)	Measured Depth (ft)	Vertical Depth (ft)	Reference (ft)	Offset (ft)	Highside Toolface (°)	Offset Wellbore Centre +N/-S (ft)	+E/-W (ft)	Between Centres (ft)	Between Ellipses (ft)	Total Uncertainty Axis	Separation Factor	Warning		
0.0	0.0	9.7	9.7	0.0	0.0	-62.45	4.6	-8.9	10.0						
100.0	100.0	109.7	109.7	0.1	0.1	-62.45	4.6	-8.9	10.0	9.7	0.29	34.447			
200.0	200.0	209.7	209.7	0.3	0.3	-62.45	4.6	-8.9	10.0	9.4	0.64	15.644	CC		
228.3	228.3	238.0	238.0	0.4	0.4	151.60	4.6	-8.9	10.1	9.4	0.74	13.675	ES		
300.0	300.0	309.7	309.7	0.5	0.5	153.01	4.6	-8.9	10.6	9.6	0.99	10.706	SF		
400.0	399.8	409.5	409.5	0.7	0.7	161.82	4.6	-8.9	15.4	14.1	1.34	11.540			
500.0	499.3	509.0	509.0	0.9	0.8	169.09	4.6	-8.9	25.6	23.9	1.68	15.208			
600.0	598.0	607.7	607.7	1.2	1.0	173.17	4.6	-8.9	41.0	39.0	2.02	20.325			
700.0	695.8	705.5	705.5	1.6	1.2	175.41	4.6	-8.9	61.7	59.4	2.35	26.273			
800.0	792.4	802.1	802.1	2.1	1.4	176.72	4.6	-8.9	87.6	84.9	2.67	32.768			
900.0	887.5	897.2	897.2	2.7	1.5	177.54	4.6	-8.9	118.4	115.4	2.98	39.674			
1,000.0	980.9	990.6	990.6	3.4	1.7	178.07	4.6	-8.9	154.2	150.9	3.29	46.922			
1,100.0	1,072.2	1,081.9	1,081.9	4.1	1.8	178.44	4.6	-8.9	194.9	191.3	3.58	54.476			
1,200.0	1,161.3	1,171.0	1,171.0	5.0	2.0	178.70	4.6	-8.9	240.3	236.4	3.86	62.323			
1,300.0	1,247.9	1,257.6	1,257.6	5.9	2.1	178.89	4.6	-8.9	290.3	286.1	4.12	70.457			
1,400.0	1,331.8	1,341.5	1,341.5	6.9	2.3	179.03	4.6	-8.9	344.7	340.3	4.37	78.881			
1,500.0	1,412.6	1,422.3	1,422.3	8.0	2.4	179.14	4.6	-8.9	403.5	398.9	4.61	87.601			
1,600.0	1,490.4	1,500.1	1,500.1	9.2	2.6	179.22	4.6	-8.9	466.4	461.6	4.83	96.621			
1,700.0	1,564.7	1,574.4	1,574.4	10.5	2.7	179.29	4.6	-8.9	533.3	528.3	5.03	105.947			
1,800.0	1,635.4	1,645.1	1,645.1	11.9	2.8	179.34	4.6	-8.9	604.0	598.8	5.23	115.581			
1,900.0	1,702.3	1,712.0	1,712.0	13.3	2.9	179.38	4.6	-8.9	678.3	672.9	5.40	125.522			
2,000.0	1,765.2	1,774.9	1,774.9	14.8	3.1	179.40	4.6	-8.9	756.0	750.4	5.57	135.763			
2,100.0	1,824.0	1,833.7	1,833.7	16.4	3.2	179.42	4.6	-8.9	836.9	831.2	5.72	146.290			
2,200.0	1,878.4	1,888.1	1,888.1	18.0	3.2	179.43	4.6	-8.9	920.7	914.9	5.86	157.078			
2,300.0	1,928.8	1,938.5	1,938.5	19.7	3.3	179.45	4.6	-8.9	1,007.2	1,001.1	6.05	166.476			
2,400.0	1,980.6	1,990.3	1,990.3	21.3	3.4	179.53	4.6	-8.9	1,092.6	1,086.2	6.45	169.320			
2,500.0	2,036.9	2,046.6	2,046.6	22.8	3.5	179.60	4.6	-8.9	1,175.3	1,168.4	6.86	171.378			
2,600.0	2,097.4	2,107.1	2,107.1	24.3	3.6	179.65	4.6	-8.9	1,254.9	1,247.6	7.26	172.766			
2,700.0	2,162.0	2,171.7	2,171.7	25.7	3.7	179.69	4.6	-8.9	1,331.2	1,323.5	7.67	173.578			

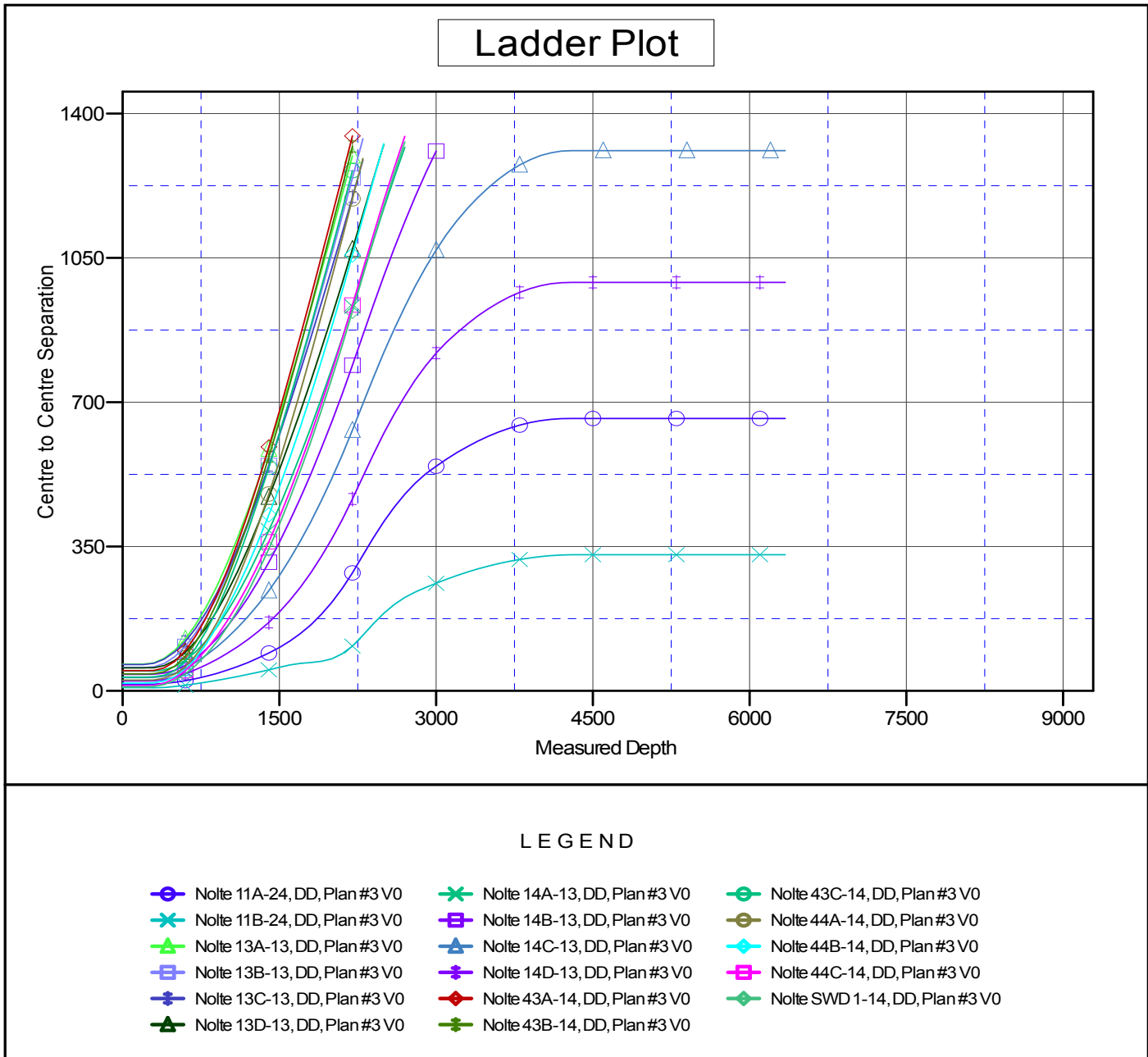
CC - Min centre to center distance or convergent point, SF - min separation factor, ES - min ellipse separation

Cathedral Energy Services

Anticollision Report

Company: Caerus Oil & Gas (NAD 27)	Local Co-ordinate Reference: Well Nolte 11C-24	
Project: Garfield County, CO	TVD Reference: WELL @ 5108.1ft (Original Well Elev)	
Reference Site: S14-T7S-R96W	MD Reference: WELL @ 5108.1ft (Original Well Elev)	
Site Error: 0.0ft	North Reference: True	
Reference Well: Nolte 11C-24	Survey Calculation Method: Minimum Curvature	
Well Error: 0.0ft	Output errors are at 2.00 sigma	
Reference Wellbore DD	Database: USA EDM 5000 Multi Users DB	
Reference Design: Plan #3	Offset TVD Reference: Offset Datum	

Reference Depths are relative to WELL @ 5108.1ft (Original Well Elev) Coordinates are relative to: Nolte 11C-24
 Offset Depths are relative to Offset Datum Coordinate System is US State Plane 1927 (Exact solution), Colorado Central 502
 Central Meridian is -105.500000 ° Grid Convergence at Surface is: -1.62°



CC - Min centre to center distance or convergent point, SF - min separation factor, ES - min ellipse separation