

T7S, R96W, 6th P.M.

Caerus Piceance LLC

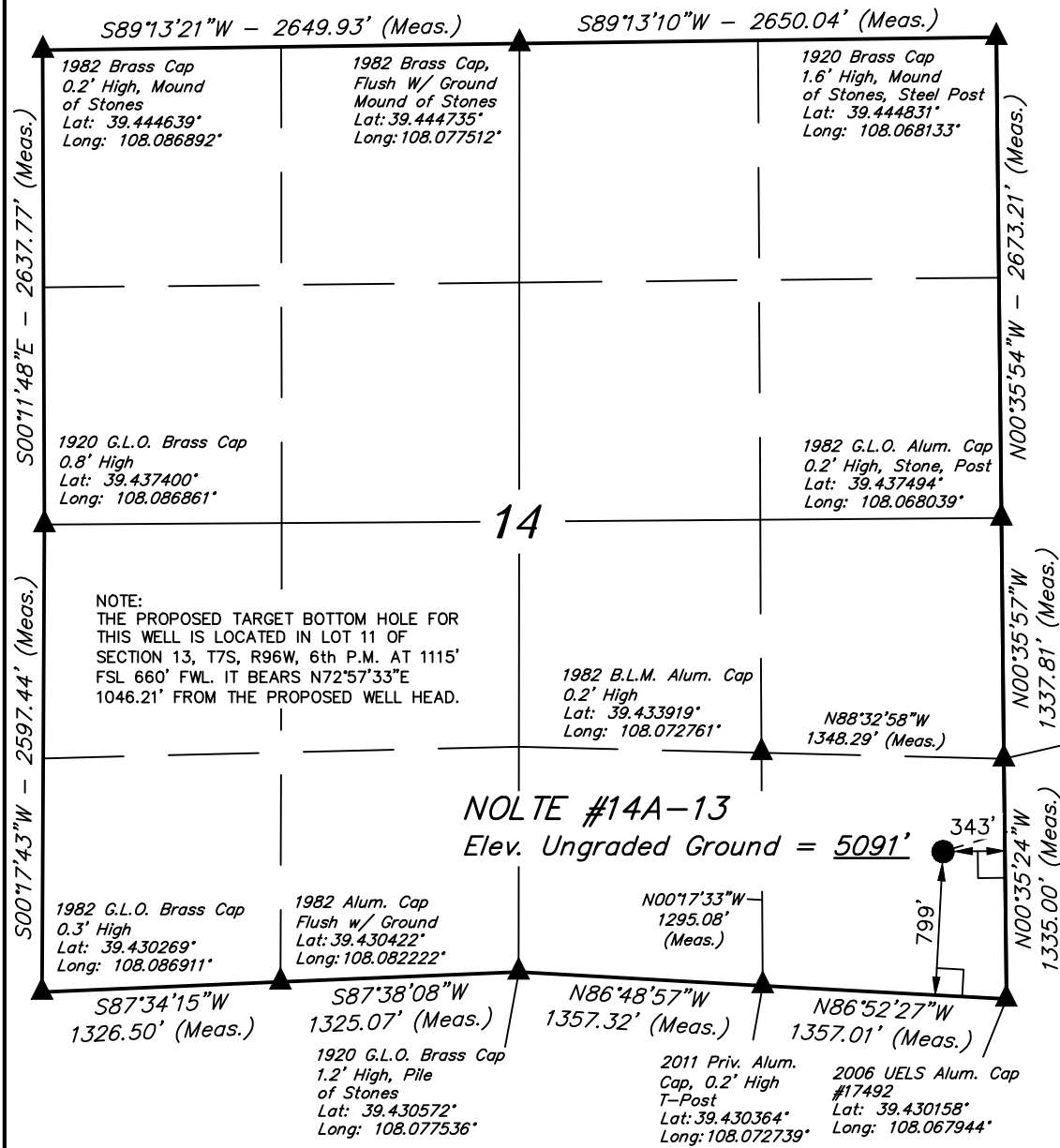
Well location, NOLTE #14A-13 (SURFACE LOCATION), located as shown in the SE 1/4 SE 1/4 of Section 14, T7S, R96W, 6th P.M., Garfield County, Colorado.

BASIS OF ELEVATION

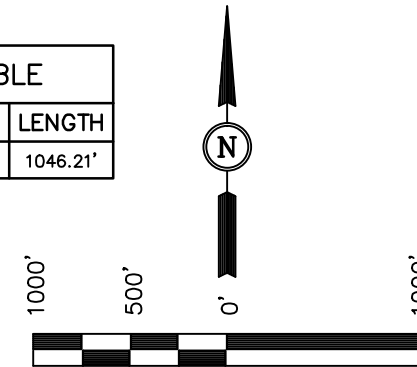
SPOT ELEVATION AT THE NORTHWEST CORNER OF SECTION 30, T5S, R95W, 6th P.M., TAKEN FROM THE FORKED GULCH QUADRANGLE, GARFIELD COUNTY, COLORADO, 7.5 MINUTE QUAD. (TOPOGRAPHIC MAP) PUBLISHED BY THE UNITED STATES DEPARTMENT OF THE INTERIOR, GEOLOGICAL SURVEY. SAID ELEVATION IS MARKED AS BEING 5966 FEET.

BASIS OF BEARINGS

BASIS OF BEARINGS IS A G.P.S. OBSERVATION.



LINE TABLE		
LINE	DIRECTION	LENGTH
L1	N72°57'33"E	1046.21'



THIS IS TO CERTIFY THAT THE ABOVE PLAT WAS PREPARED FROM FIELD NOTES OF ACTUAL SURVEYS MADE BY ME OR UNDER MY SUPERVISION AND THAT THE SAME ARE TRUE AND CORRECT TO THE BEST OF MY KNOWLEDGE AND BELIEF.

REGISTERED LAND SURVEYOR
REGISTRATION NO. 17492
STATE OF COLORADO
09-04-13

UINTAH ENGINEERING & LAND SURVEYING

85 SOUTH 200 EAST - VERNAL, UTAH 84078

(435) 789-1017

LEGEND:

- └─┘ = 90° SYMBOL
- = PROPOSED WELL HEAD.
- ▲ = SECTION CORNERS LOCATED.

PDOP = 2.1

NAD 83 (SURFACE LOCATION)	
LATITUDE	= 39°25'56.67" (39.432408)
LONGITUDE	= 108°04'09.08" (108.069189)
NAD 27 (SURFACE LOCATION)	
LATITUDE	= 39°25'56.75" (39.432431)
LONGITUDE	= 108°04'06.80" (108.068556)

SCALE 1" = 1000'	DATE SURVEYED: 06-13-13	DATE DRAWN: 08-29-13
PARTY B.J. B.B. T.B.	REFERENCES G.L.O. PLAT	
WEATHER WARM	FILE Caerus Piceance LLC	

T7S, R96W, 6th P.M.

E 1/4 Cor. Sec. 12
1973 Brass Cap
0.1' High, Steel Post
Lat: 39.452428°
Long: 108.049101°

W.C. 1984 Priv. Brass Cap
Flush w/Ground, #18480
Lat: 39.445840°
Long: 108.049016°

Caerus Piceance LLC

Well location, NOLTE #14A-13 (TARGET BOTTOM HOLE), located as shown in LOT 11 of Section 13, T7S, R96W, 6th P.M., Garfield County, Colorado.

LINE TABLE		
LINE	DIRECTION	LENGTH
L1	N72°57'33"E	1046.21'

BASIS OF ELEVATION

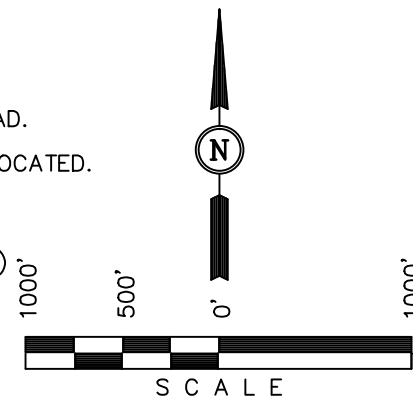
SPOT ELEVATION AT THE NORTHWEST CORNER OF SECTION 30, T5S, R95W, 6th P.M., TAKEN FROM THE FORKED GULCH QUADRANGLE, GARFIELD COUNTY, COLORADO, 7.5 MINUTE QUAD. (TOPOGRAPHIC MAP) PUBLISHED BY THE UNITED STATES DEPARTMENT OF THE INTERIOR, GEOLOGICAL SURVEY. SAID ELEVATION IS MARKED AS BEING 5966 FEET.

BASIS OF BEARINGS

BASIS OF BEARINGS IS A G.P.S. OBSERVATION.

LEGEND:

- └─┘ = 90° SYMBOL
- = PROPOSED WELL HEAD.
- ▲ = SECTION CORNERS LOCATED.
- △ = SECTION CORNERS RE-ESTABLISHED. (Not Set on Ground.)



CERTIFICATE

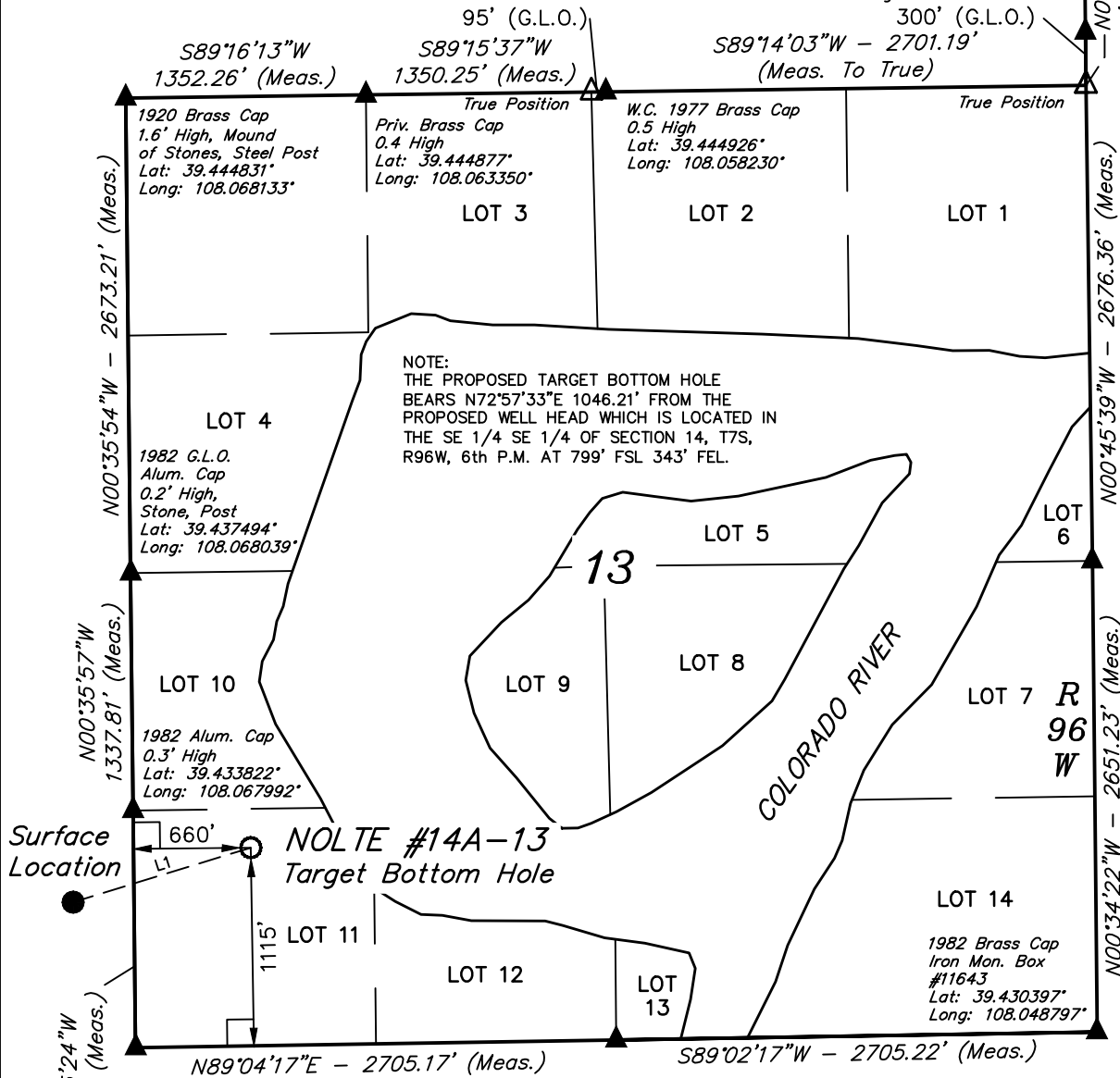
THIS IS TO CERTIFY THAT THE ABOVE PLAT WAS PREPARED FROM FIELD NOTES OF ACTUAL SURVEYS MADE BY ME OR UNDER MY SUPERVISION AND THAT THE SAME ARE TRUE AND CORRECT TO THE BEST OF MY KNOWLEDGE AND BELIEF.

REGISTERED LAND SURVEYOR
REGISTRATION NO. 17492
STATE OF COLORADO
09-04-13

UINTAH ENGINEERING & LAND SURVEYING

85 SOUTH 200 EAST - VERNAL, UTAH 84078

(435) 789-1017



NOTE:
THE PROPOSED TARGET BOTTOM HOLE BEARS N72°57'33"E 1046.21' FROM THE PROPOSED WELL HEAD WHICH IS LOCATED IN THE SE 1/4 SE 1/4 OF SECTION 14, T7S, R96W, 6th P.M. AT 799' FSL 343' FEL.

NAD 83 (TARGET BOTTOM HOLE)	
LATITUDE = 39°25'59.69" (39.433247)	
LONGITUDE = 108°03'56.33" (108.065647)	
NAD 27 (TARGET BOTTOM HOLE)	
LATITUDE = 39°25'59.77" (39.433269)	
LONGITUDE = 108°03'54.06" (108.065017)	

SCALE 1" = 1000'	DATE SURVEYED: 06-13-13	DATE DRAWN: 08-29-13
PARTY B.J. B.B. T.B.	REFERENCES G.L.O. PLAT	
WEATHER WARM	FILE Caerus Piceance LLC	