

# T7S, R96W, 6th P.M.

## Caerus Piceance LLC

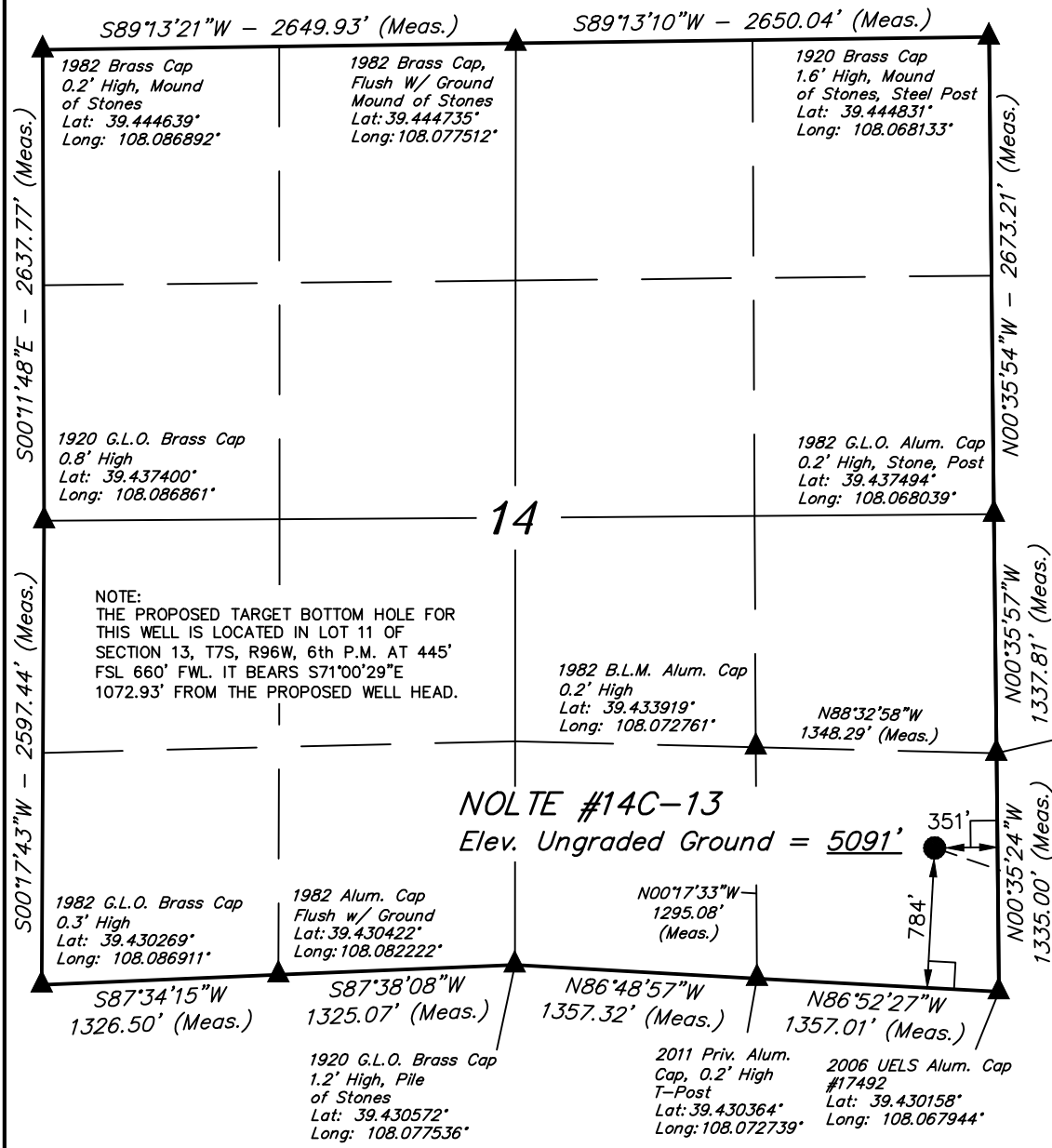
Well location, NOLTE #14C-13 (SURFACE LOCATION), located as shown in the SE 1/4 SE 1/4 of Section 14, T7S, R96W, 6th P.M., Garfield County, Colorado.

### BASIS OF ELEVATION

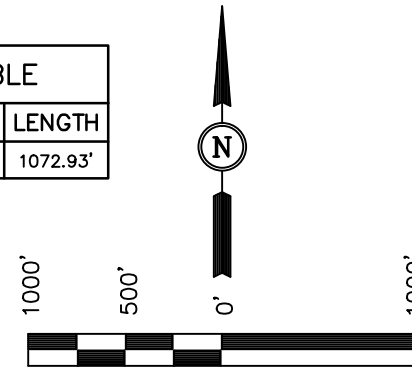
SPOT ELEVATION AT THE NORTHWEST CORNER OF SECTION 30, T5S, R95W, 6th P.M., TAKEN FROM THE FORKED GULCH QUADRANGLE, GARFIELD COUNTY, COLORADO, 7.5 MINUTE QUAD. (TOPOGRAPHIC MAP) PUBLISHED BY THE UNITED STATES DEPARTMENT OF THE INTERIOR, GEOLOGICAL SURVEY. SAID ELEVATION IS MARKED AS BEING 5966 FEET.

### BASIS OF BEARINGS

BASIS OF BEARINGS IS A G.P.S. OBSERVATION.



| LINE TABLE |             |          |
|------------|-------------|----------|
| LINE       | DIRECTION   | LENGTH   |
| L1         | S71°00'29"E | 1072.93' |



CERTIFICATE

THIS IS TO CERTIFY THAT THE ABOVE PLAT WAS PREPARED FROM FIELD NOTES OF ACTUAL SURVEYS MADE BY ME OR UNDER MY SUPERVISION AND THAT THE SAME ARE TRUE AND CORRECT TO THE BEST OF MY KNOWLEDGE AND BELIEF.

REGISTERED LAND SURVEYOR  
REGISTRATION NO. 17492  
STATE OF COLORADO  
09-04-13

## UINTAH ENGINEERING & LAND SURVEYING

85 SOUTH 200 EAST - VERNAL, UTAH 84078

(435) 789-1017

### LEGEND:

- └─┘ = 90° SYMBOL
- = PROPOSED WELL HEAD.
- ▲ = SECTION CORNERS LOCATED.

PDOP = 2.1

| NAD 83 (SURFACE LOCATION) |                              |
|---------------------------|------------------------------|
| LATITUDE                  | = 39°25'56.53" (39.432369)   |
| LONGITUDE                 | = 108°04'09.17" (108.069214) |
| NAD 27 (SURFACE LOCATION) |                              |
| LATITUDE                  | = 39°25'56.61" (39.432392)   |
| LONGITUDE                 | = 108°04'06.90" (108.068583) |

|                         |                             |                         |
|-------------------------|-----------------------------|-------------------------|
| SCALE<br>1" = 1000'     | DATE SURVEYED:<br>06-13-13  | DATE DRAWN:<br>08-29-13 |
| PARTY<br>B.J. B.B. T.B. | REFERENCES<br>G.L.O. PLAT   |                         |
| WEATHER<br>WARM         | FILE<br>Caerus Piceance LLC |                         |

T7S, R96W, 6th P.M.

E 1/4 Cor. Sec. 12  
1973 Brass Cap  
0.1' High, Steel Post  
Lat: 39.452428°  
Long: 108.049101°

W.C. 1984 Priv. Brass Cap  
Flush w/Ground, #18480  
Lat: 39.445840°  
Long: 108.049016°

Caerus Piceance LLC

Well location, NOLTE #14C-13 (TARGET BOTTOM HOLE), located as shown in LOT 11 of Section 13, T7S, R96W, 6th P.M., Garfield County, Colorado.

| LINE TABLE |             |          |
|------------|-------------|----------|
| LINE       | DIRECTION   | LENGTH   |
| L1         | S71°00'29"E | 1072.93' |

**BASIS OF ELEVATION**

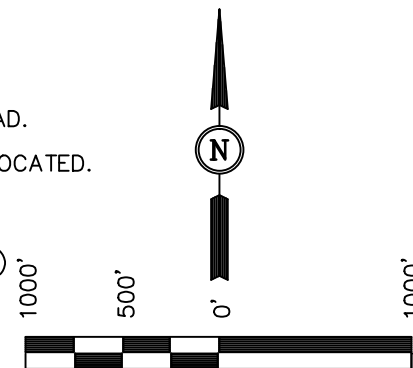
SPOT ELEVATION AT THE NORTHWEST CORNER OF SECTION 30, T5S, R95W, 6th P.M., TAKEN FROM THE FORKED GULCH QUADRANGLE, GARFIELD COUNTY, COLORADO, 7.5 MINUTE QUAD. (TOPOGRAPHIC MAP) PUBLISHED BY THE UNITED STATES DEPARTMENT OF THE INTERIOR, GEOLOGICAL SURVEY. SAID ELEVATION IS MARKED AS BEING 5966 FEET.

**BASIS OF BEARINGS**

BASIS OF BEARINGS IS A G.P.S. OBSERVATION.

**LEGEND:**

- └─┘ = 90° SYMBOL
- = PROPOSED WELL HEAD.
- ▲ = SECTION CORNERS LOCATED.
- △ = SECTION CORNERS RE-ESTABLISHED. (Not Set on Ground.)



**CERTIFICATE**

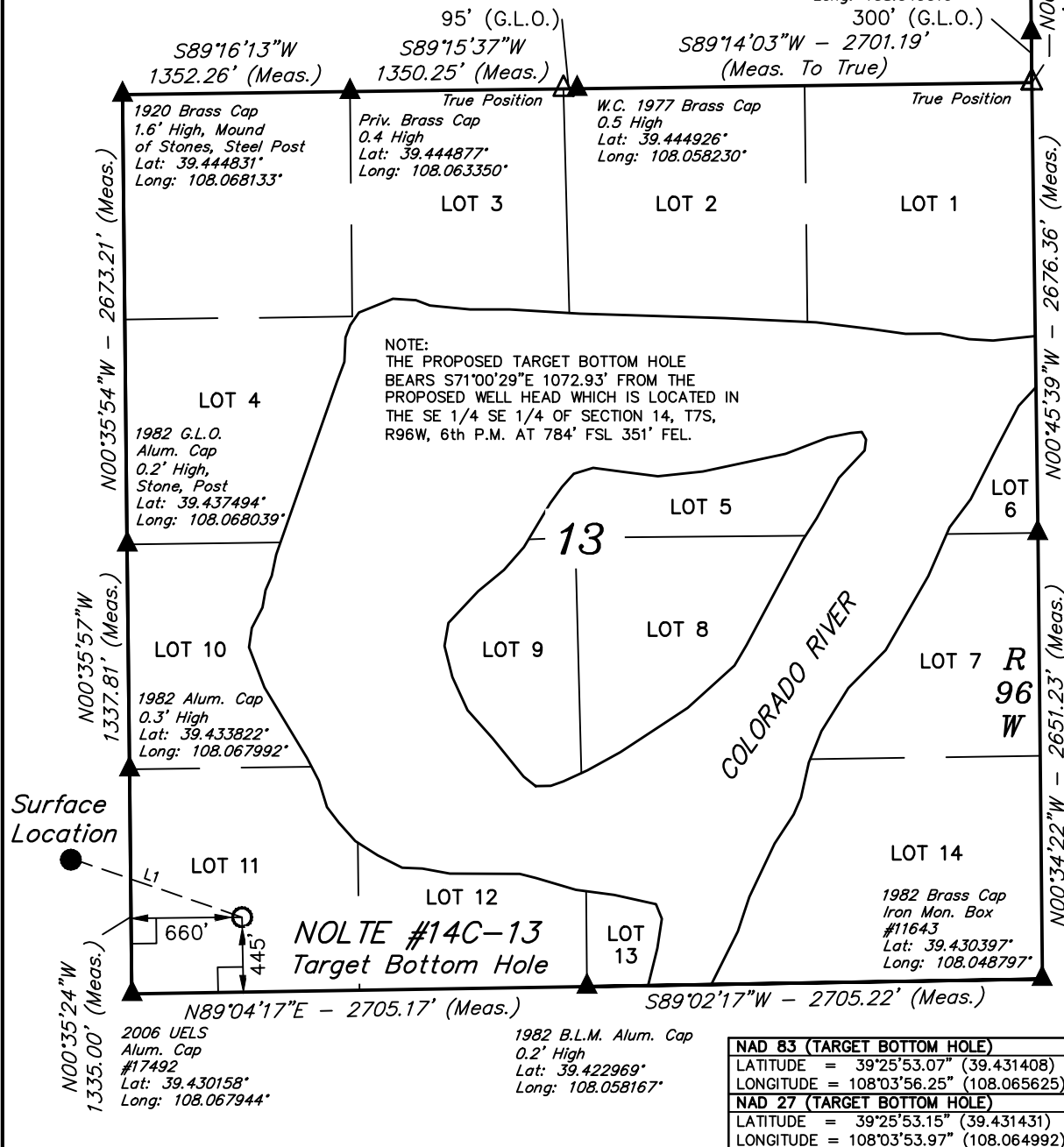
THIS IS TO CERTIFY THAT THE ABOVE PLAT WAS PREPARED FROM FIELD NOTES OF ACTUAL SURVEYS MADE BY ME OR UNDER MY SUPERVISION AND THAT THE SAME ARE TRUE AND CORRECT TO THE BEST OF MY KNOWLEDGE AND BELIEF.

ROBERT L. HAYES  
REGISTERED LAND SURVEYOR  
REGISTRATION NO. 17492  
STATE OF COLORADO  
09-04-13

**UINTAH ENGINEERING & LAND SURVEYING**

85 SOUTH 200 EAST - VERNAL, UTAH 84078

(435) 789-1017



|  |
|--|
| <b>NAD 83 (TARGET BOTTOM HOLE)</b>     |
| LATITUDE = 39°25'53.07" (39.431408)    |
| LONGITUDE = 108°03'56.25" (108.065625) |
| <b>NAD 27 (TARGET BOTTOM HOLE)</b>     |
| LATITUDE = 39°25'53.15" (39.431431)    |
| LONGITUDE = 108°03'53.97" (108.064992) |

|                         |                             |                         |
|-------------------------|-----------------------------|-------------------------|
| SCALE<br>1" = 1000'     | DATE SURVEYED:<br>06-13-13  | DATE DRAWN:<br>08-29-13 |
| PARTY<br>B.J. B.B. T.B. | REFERENCES<br>G.L.O. PLAT   |                         |
| WEATHER<br>WARM         | FILE<br>Caerus Piceance LLC |                         |