

98/8<sup>u</sup>

# HALLIBURTON

# Cementing Job Summary

The Road to Excellence Starts with Safety

<b>Sold To #:</b> 303331	<b>Ship To #:</b> 3100336	<b>Quote #:</b>	<b>Sales Order #:</b> 900759095
<b>Customer:</b> KOCH EXPLORATION COMPANY L L C		<b>Customer Rep:</b> Douglas, Howard	
<b>Well Name:</b> Wyatt		<b>Well #:</b> 25-43	<b>API/UWI #:</b>
<b>Field:</b>	<b>City (SAP):</b> MEEKER	<b>County/Parish:</b> Rio Blanco	<b>State:</b> Colorado
<b>Contractor:</b> CAPSTAR		<b>Rig/Platform Name/Num:</b> 311	
<b>Job Purpose:</b> Cement Surface Casing			
<b>Well Type:</b> Development Well		<b>Job Type:</b> Cement Surface Casing	
<b>Sales Person:</b> KRUGER, ROBERT		<b>Srvc Supervisor:</b> SMITH, KC	<b>MBU ID Emp #:</b> 462378

### Job Personnel

HES Emp Name	Exp Hrs	Emp #	HES Emp Name	Exp Hrs	Emp #	HES Emp Name	Exp Hrs	Emp #
BONE, JEFFERSON Eldon	8.8	491216	BUSHMAN, JOSH M	8.8	530613	ESTEP, KENNETH	8.8	214387
SMITH, KC Hyrum	8.8	462378						

### Equipment

HES Unit #	Distance-1 way	HES Unit #	Distance-1 way	HES Unit #	Distance-1 way	HES Unit #	Distance-1 way
10783493	120 mile	11061777	120 mile	11108221	120 mile	11139328	120 mile
11263212	120 mile	11307428	120 mile	11501021	120 mile		

### Job Hours

Date	On Location Hours	Operating Hours	Date	On Location Hours	Operating Hours	Date	On Location Hours	Operating Hours
9/22/2013	8.8	2						

TOTAL Total is the sum of each column separately

Job				Job Times			
Formation Name	Formation Depth (MD)	Top	Bottom	Date	Time	Time Zone	
				Called Out	22 - Sep - 2013	02:00	MST
				On Location	22 - Sep - 2013	06:00	MST
	1143. ft			Job Started	22 - Sep - 2013	12:10	MST
				Job Completed	22 - Sep - 2013	13:30	MST
				Departed Loc	22 - Sep - 2013	14:45	MST

### Well Data

Description	New / Used	Max pressure psig	Size in	ID in	Weight lbm/ft	Thread	Grade	Top MD ft	Bottom MD ft	Top TVD ft	Bottom TVD ft
Surface OH				12.25				250.	850.		
Surface OH				12.25				850.	1176.		
Conductor Casing	Unknown		13.375	12.715	48.		J-55	.	250.		
Surface Casing	Unknown		9.625	8.921	36.		J-55	.	1176.		

### Tools and Accessories

Type	Size	Qty	Make	Depth	Type	Size	Qty	Make	Depth	Type	Size	Qty	Make
Guide Shoe					Packer					Top Plug	9.625	1	HES
Float Shoe	9.625	1		1140	Bridge Plug					Bottom Plug			
Float Collar	9.625	1		1100	Retainer					SSR plug set			
Insert Float										Plug Container	9.625	1	HES
Stage Tool										Centralizers			

### Miscellaneous Materials

Gelling Agt	Conc	Surfactant	Conc	Acid Type	Qty	Conc	%
Treatment Fld	Conc	Inhibitor	Conc	Sand Type	Size	Qty	

### Fluid Data

Stage/Plug #: 1											
Fluid #	Stage Type	Fluid Name			Qty	Qty uom	Mixing Density lbm/gal	Yield ft <sup>3</sup> /sk	Mix Fluid Gal/sk	Rate bbl/min	Total Mix Fluid Gal/sk

called @ 2AM  
 POR BAM  
 on loc  
 PER ROB KRUGER. PER LEAD-TIME REQUESTED.

1	TUNED SPACER III	TUNED SPACER III - SBM (483826)	40.00	bbl	12.3	.0	.0	4.0	
	34.9 gal/bbl	FRESH WATER							
	192.8 lbm/bbl	BARITE, BULK (100003681)							
2	VariCem V1	VARICEM (TM) CEMENT (452009)	230.0	sacks	12.5	2.33	13.33	4.0	13.33
3	HalCem	HALCEM (TM) SYSTEM (452986)	110.0	sacks	14.2	1.61	8.03	4.0	8.03
	10 %	CAL-SEAL 60, 50 LB BAG (101217146)							
	1 %	CALCIUM CHLORIDE, PELLET, 50 LB (101509387)							
	0.125 lbm	POLY-E-FLAKE (101216940)							
	8.03 Gal	FRESH WATER							
4	Displacement Mud		85.00	bbl	12.	.0	.0	4.0	
5	Top-Out Cement	HALCEM (TM) SYSTEM (452986)	0	sacks	14.2	1.61	7.93	1.0	7.93
	10 %	CAL-SEAL 60, 50 LB BAG (101217146)							
	1 %	CALCIUM CHLORIDE, PELLET, 50 LB (101509387)							
	0.125 lbm	POLY-E-FLAKE (101216940)							
	7.931 Gal	FRESH WATER							
<b>Calculated Values</b>		<b>Pressures</b>			<b>Volumes</b>				
Displacement	85	Shut In: Instant		Lost Returns	none	Cement Slurry	127	Pad	
Top Of Cement		5 Min		Cement Returns	56	Actual Displacement	85	Treatment	
Frac Gradient		15 Min		Spacers	40	Load and Breakdown		Total Job	
<b>Rates</b>									
Circulating		Mixing	5	Displacement	5	Avg. Job	5		
Cement Left In Pipe	Amount	40 ft	Reason	Shoe Joint					
Frac Ring # 1 @	ID	Frac ring # 2 @	ID	Frac Ring # 3 @	ID	Frac Ring # 4 @	ID		
<b>The Information Stated Herein Is Correct</b>				Customer Representative Signature					

*The Road to Excellence Starts with Safety*

<b>Sold To #:</b> 303331	<b>Ship To #:</b> 3100336	<b>Quote #:</b>	<b>Sales Order #:</b> 900759095
<b>Customer:</b> KOCH EXPLORATION COMPANY L L C		<b>Customer Rep:</b> Douglas, Howard	
<b>Well Name:</b> Wyatt		<b>Well #:</b> 25-43	<b>API/UWI #:</b>
<b>Field:</b>	<b>City (SAP):</b> MEEKER	<b>County/Parish:</b> Rio Blanco	<b>State:</b> Colorado
<b>Legal Description:</b>			
<b>Lat:</b> N 0 deg. OR N 0 deg. 0 min. 0 secs.		<b>Long:</b> E 0 deg. OR E 0 deg. 0 min. 0 secs.	
<b>Contractor:</b> CAPSTAR		<b>Rig/Platform Name/Num:</b> 311	
<b>Job Purpose:</b> Cement Surface Casing			<b>Ticket Amount:</b>
<b>Well Type:</b> Development Well		<b>Job Type:</b> Cement Surface Casing	
<b>Sales Person:</b> KRUGER, ROBERT		<b>Srvc Supervisor:</b> SMITH, KC	<b>MBU ID Emp #:</b> 462378

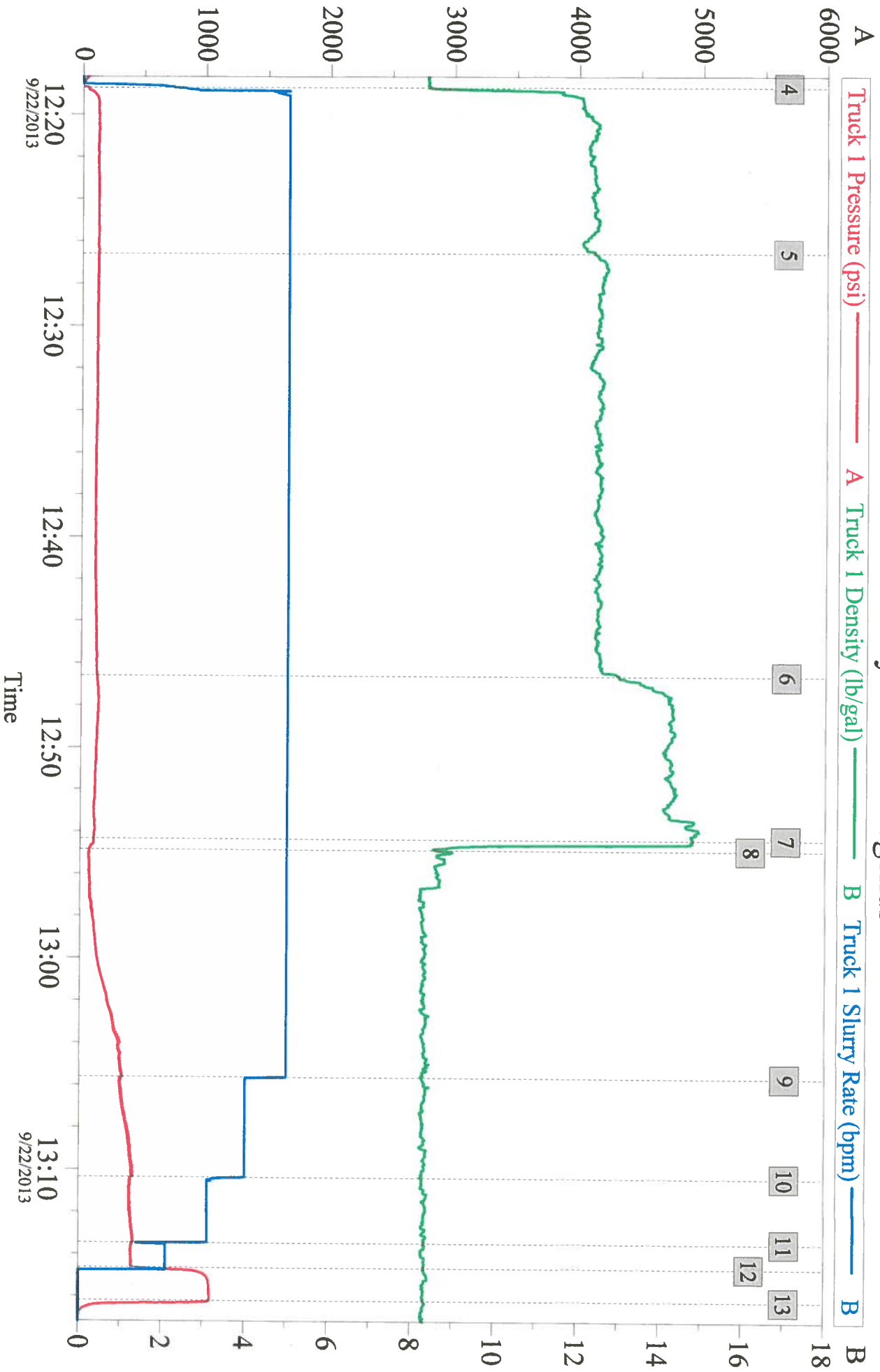
Activity Description	Date/Time	Cht #	Rate bbl/min	Volume bbl		Pressure psig		Comments
				Stage	Total	Tubing	Casing	
Call Out	09/22/2013 02:00							Crew Called out for Job. Requested on location @ 08:00.
Pre-Convoy Safety Meeting	09/22/2013 03:55							Met w/crew to discuss safety and hazards of travel to location
Depart from Service Center or Other Site	09/22/2013 04:00							Entered into Journey Management.
Arrive At Loc	09/22/2013 06:00							Ended Journey Management. Casing crew still running casing.
Assessment Of Location Safety Meeting	09/22/2013 06:05							Met w/crew to discuss hazards of site, location of materials and safety precautions. Met with Company rep to get numbers and discuss when and where to spot equipment. Wait until casing has been ran before spotting Equipment as per Company Rep.
Comment	09/22/2013 06:10							Waiting for rig to finish running casing.
Comment	09/22/2013 10:45							Spot Equipment into position.
Rig-Up Equipment	09/22/2013 10:50							Casing Crew finishes running casing and begins to rig down.
Pre-Rig Up Safety Meeting	09/22/2013 10:55							Met w/crew to discuss the best way to rig up, safety and hazards involved.
Rig-Up Equipment	09/22/2013 11:00							Rig up water, product, and iron.

Activity Description	Date/Time	Cht #	Rate bbl/min	Volume bbl		Pressure psig		Comments
				Stage	Total	Tubing	Casing	
Pre-Job Safety Meeting	09/22/2013 11:50							Met with Rig Crew, Co. Rep, and our crew to discuss job procedures, contingencies, and safety measures.
Rig-Up Completed	09/22/2013 12:00							Stab cmt head and finish rigging up the iron on the floor.
Comment	09/22/2013 12:13							Fill lines with fresh water for pressure test
Test Lines	09/22/2013 12:16							Pressure test iron to 3000 psi
Pump Spacer	09/22/2013 12:18		4	40	40		39.0	Pump Tuned Spacer @ 12.3 lb/gal.
Pump Lead Cement	09/22/2013 12:26		5	95	135		128.0	Pumped 230 sks VariCem Cement @ 12.5 lb/gal, 2.33 cuft/sk, 13.33 gal/sk.
Pump Tail Cement	09/22/2013 12:46		5	32	167		128.0	Pumped 110 sks HalCem Cement @ 14.2 lb/gal, 1.61 cuft/sk, 8.03 gal/sk.
Drop Top Plug	09/22/2013 12:54						106.0	Drop top plug. Wash pumps and lines on top of plug.
Pump Displacement	09/22/2013 12:54		5				71.0	Pump Displacement 85 bbls of Fresh Water.
Slow Rate	09/22/2013 13:05		4				341.0	Slow displacement rate to 4 barrels per minute.
Slow Rate	09/22/2013 13:10		3				422.0	Slow displacement rate to 3 barrels per minute.
Slow Rate	09/22/2013 13:13		2	75	242		432.0	Slow rate to 2 bpm to land the plug.
Bump Plug	09/22/2013 13:14		2	85	252		441.0	Bump plug after 85 barrels of displacement gone. Over pressure to 1055 psi.
Check Floats	09/22/2013 13:16							Held for 2 min, check floats as per Company Rep. Floats held. 1/2 bbl back.
End Job	09/22/2013 13:30							Cement to surface and holding. 56 bbls back to surface. Job Complete.
Post-Job Safety Meeting (Pre Rig-Down)	09/22/2013 13:35							Met w/crew to discuss rigging down safely.
Rig-Down Equipment	09/22/2013 13:45							Rig everything down.

Activity Description	Date/Time	Cht #	Rate bbl/ min	Volume bbl		Pressure psig		Comments
				Stage	Total	Tubing	Casing	
Pre-Convoy Safety Meeting	09/22/2013 14:30							Met w/crew to discuss fit-for-duty, safety and hazards of travel back.
Depart Location for Service Center or Other Site	09/22/2013 14:45							Entered into Journey Management.

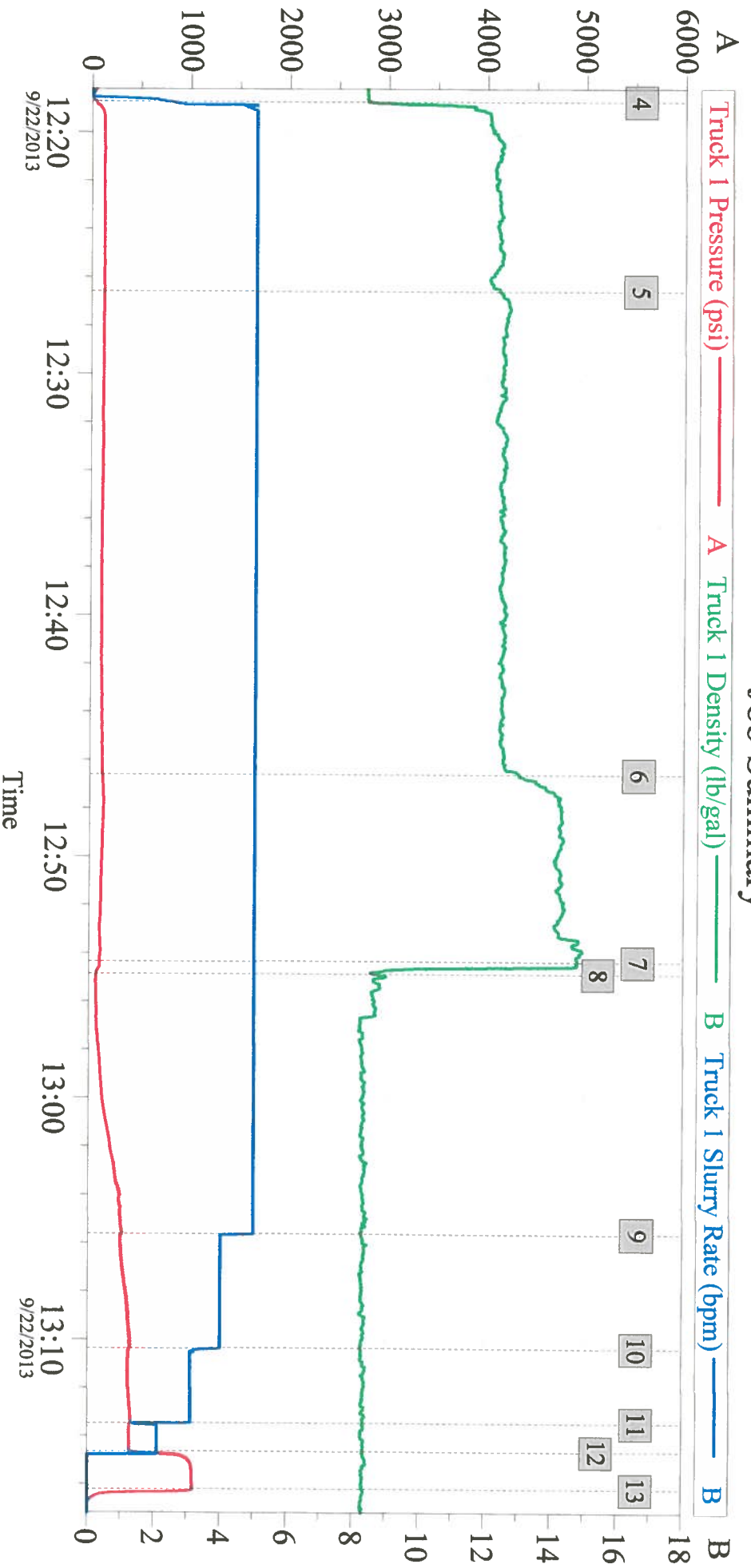
# Koch, Wyatt 25-43, Surface

## Job Summary without Legends



Customer: Koch	Job Date: 22-Sep-2013	Sales Order #: 900759095
Job Description: Surface	UWI: Wyatt 25-43	Elite #: 11501021
Service Supervisor: KC Smith	Service Operator: Ken Estep	

# Koch, Wyatt 25-43, Surface Job Summary



Customer: Koch	Job Date: 22-Sep-2013	Sales Order #: 900759095
Job Description: Surface	UWI: Wyatt 25-43	Elite #: 11501021
Service Supervisor: KC Smith	Service Operator: Ken Estep	