



---

**Corporate Office**

1775 Sherman Street, #3000  
Denver, Colorado 80203  
303.860.5800  
www.pdce.com

October 2, 2013

State of Colorado, Oil & Gas Conservation Commission  
Attn: Matt Lepore  
1120 Lincoln Street, Suite 801  
Denver, CO 80203

Re: **Letter to the Director, Rule 318A.e.**  
Gaddis 36M-243  
NWNW, Section 36 T4N R68W  
Weld County, Colorado

Dear Director:

PDC Energy ("PDC") hereby certifies to the Director that PDC holds all minerals in the proposed 160 acre wellbore spacing unit consisting of the E2W2 of Section 36 in T4N R68W; therefore, no 30-day notice is needed to owners in the proposed wellbore spacing unit. This horizontal well location crosses existing unit boundaries and requires the formation of the proposed unit. PDC hereby requests the Director to approve the well.

If you should have any questions or concerns regarding this permit, please contact the undersigned at (303) 860-5800.

Sincerely,

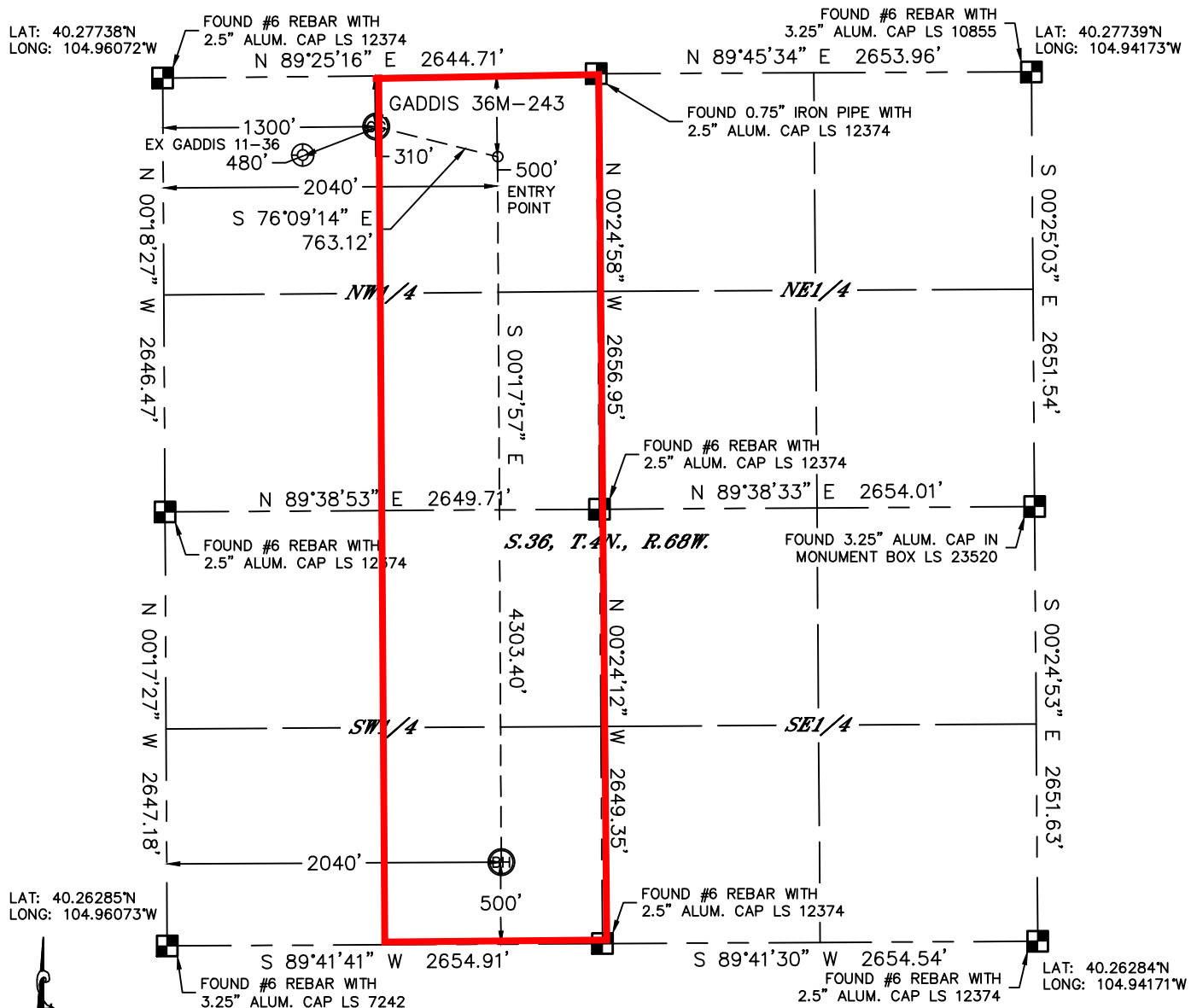
A handwritten signature in blue ink, appearing to read "Liz Lindow", written over the word "Sincerely,".

Liz Lindow  
Regulatory Analyst  
PDC Energy, Inc.

# WELL LOCATION CERTIFICATE

THIS MAP DOES NOT REPRESENT A BOUNDARY SURVEY

SECTION: 36  
TOWNSHIP: 4N  
RANGE: 68W



In accordance with a request from Mac Neumann with PDC ENERGY Lat40', Inc. has determined the surface location of the GADDIS 36M-243 to be 310' from the NORTH line and 1300' from the WEST line and the bottom hole to be 500' from the SOUTH line and 2040' from the WEST line as measured at right angles from the section lines of Section 36, Township 4 North, Range 68 West of the Sixth Principal Meridian, County of Weld, State of Colorado.

I hereby state that this Well Location Certificate was prepared by me, or under my direct supervision, that the fieldwork was completed on 11/13/2012, for and on behalf of PDC ENERGY. That this is not a Land Survey Plat or an Improvement Survey Plat, and that it is not to be relied upon for establishment of fence, building, or other future improvement lines.

NOTE:

- 1) Bearings shown are Grid Bearings of the Colorado State Plane Coordinate System, North Zone, North American Datum 1983/2007. The lineal dimensions as contained herein are based upon the "U.S. Survey Foot."
- 2) Ground elevations are based on an observed GPS elevation (NAVD 1988 DATUM).
- 3) NEAREST EXISTING WELL: GADDIS 11-36, 480'
- 4) IMPROVEMENTS: See LOCATION DRAWING for all visible improvements within 400' of disturbed area.
- 5) SURFACE USE: CROPLAND
- 6) INSTRUMENT OPERATOR: WYATT HALL

SURFACE LOCATION

LAT: 40.27654°N  
LONG: 104.95606°W  
PDOP: 1.7  
ELEV: 5057'  
1/4,1/4: NW1/4NW1/4  
NEAREST PROPERTY LINE: 310' NORTH

BOTTOM HOLE

LAT: 40.26422°N  
LONG: 104.95342°W



### ENTRY POINT

LAT: 40.27603°N  
LONG: 104.95341°W

NOTE

NOTE  
According to Colorado law, you must commence any legal action based upon any defect in this W.L.C. within three years after you discover such defect. In no event, may any action based upon any defect in this survey be commenced more than ten years after the date of the certificate shown hereon. (13-80-105 C.R.S.)

### LEGEND

-  = ALIQUOT MONUMENT AS DESCRIBED  
 = CALCULATED POSITION

Brian T. Brinkman—On behalf of L&L, Inc.  
Colorado Licensed Professional Land Surveyor No. 38175  
DATE: 11/27/2018  
PROJECT#: 2018-0001

DATE: 11/27/2012  
PROJECT#: 2011351

