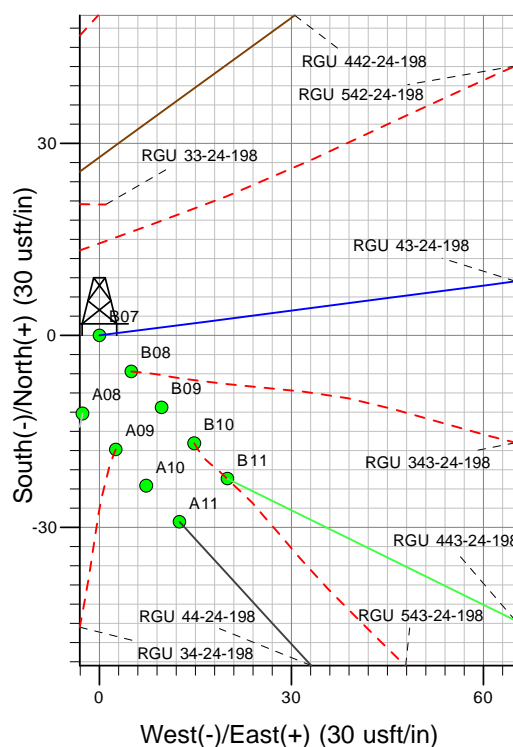
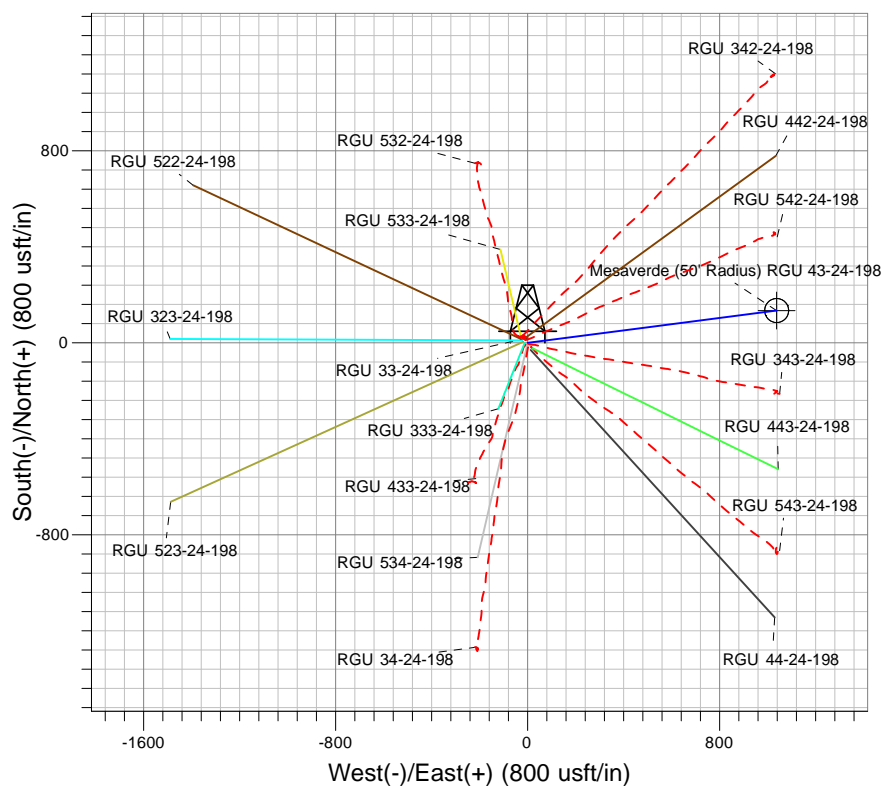
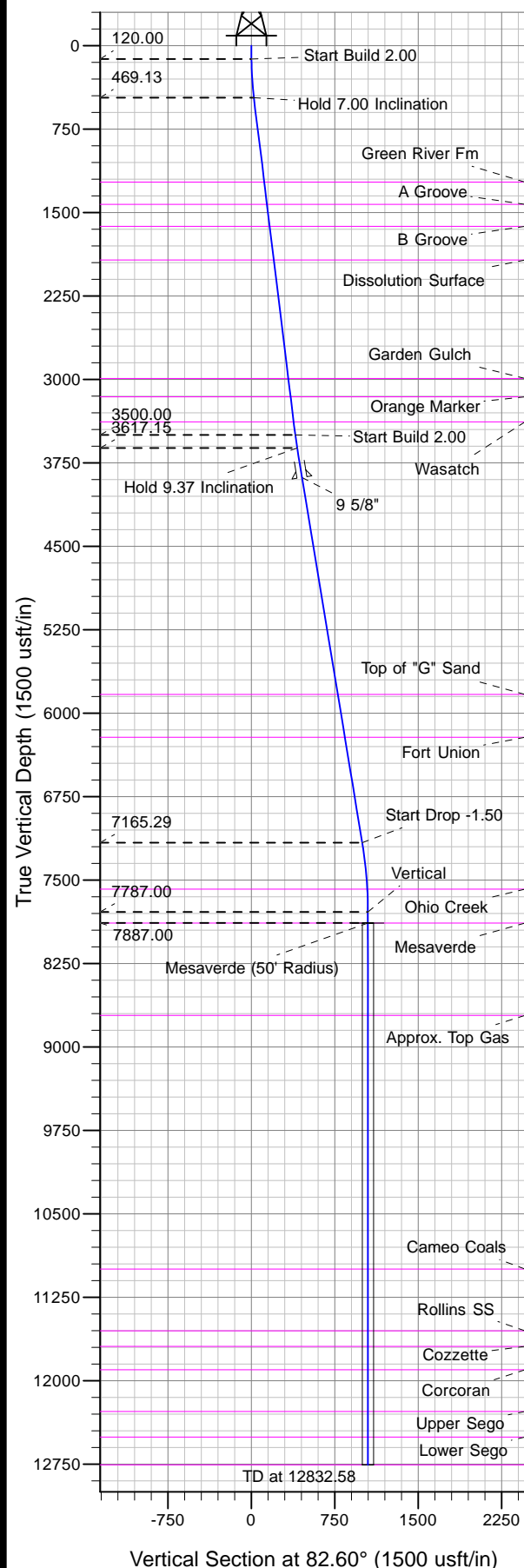




Well Name: RGU 43-24-198
Surface Location: RGU 33-24-198 Pad
North American Datum 1983 , US State Plane 1983, Colorado Central Zone
Ground Elevation: 6596.00

+N/-S	+E/-W	Northing	Easting	Latitude	Longitude	Slot
0.00	0.00	1782441.30	2204018.90	39.94747	-108.33930	B07

KELLY BUSHING @ 6617.00usft (Cyclone 29 (21' RKB) kjs)



Project: RG 24-01S-098W
Site: RGU 33-24-198 Pad
Well: RGU 43-24-198
Plan 2 06Jun13 kjs



Azimuths to True North
Magnetic North: 10.31°
Magnetic Field
Strength: 52245.5snT
Dip Angle: 65.99°
Date: 6/7/2013
Model: IGRF2010

ANNOTATIONS

TVD	MD	Inc	Azi	+N/-S	+E/-W	Vsect	Departure	Annotation
120.00	120.00	0.00	0.00	0.00	0.00	0.00	0.00	Start Build 2.00
469.13	470.00	7.00	82.60	2.75	21.18	21.35	21.35	Hold 7.00 Inclination
3500.00	3523.63	7.00	82.60	50.65	390.22	393.50	393.50	Start Build 2.00
3617.15	3642.00	9.37	82.60	52.82	406.93	410.35	410.35	Hold 9.37 Inclination
7165.29	7238.09	9.37	82.60	128.16	987.38	995.66	995.66	Start Drop -1.50
7787.00	7862.58	0.00	0.00	134.71	1037.89	1046.60	1046.60	Vertical
7887.00	7962.58	0.00	0.00	134.71	1037.89	1046.60	1046.60	Mesaverde
12757.00	12832.58	0.00	0.00	134.71	1037.89	1046.60	1046.60	TD at 12832.58