

CHEVRON - MID-CONTINENT EBIZ
760 Horizon Dr
Grand Junction, CO 81506

SKR 598-25-BV-22

Interval 1
Garfield County, Colorado

Sales Order: 900659002

Post Job Report

For: Kieth Hejl
Date: Monday, August 12, 2013

Notice: Although the information contained in this report is based on sound engineering practices, the copyright owner(s) does (do) not accept any responsibility whatsoever, in negligence or otherwise, for any loss or damage arising from the possession or use of the report whether in terms of correctness or otherwise. The application, therefore, by the user of this report or any part thereof, is solely at the user's own risk.

HALLIBURTON

Table of Contents

1.0 Well Information 3

 1.1 Customer Information 3

 1.2 Pipe Information 4

 1.3 Perforation Intervals 4

2.0 Actual Stage Summary 5

 2.1 Stage Summary 5

3.0 Performance Highlights..... 8

 3.1 Job Summary..... 8

 3.2 Job Event Log 9

4.0 Attachments..... 10

 4.1 Treating Chart 10

 4.2 Chemical Chart 11

 4.3 Averages Chart..... 12

 4.4 Net Pressure Plot 13

1.0 WELL INFORMATION**1.1 Customer Information**

| | |
|-----------------------------------|------------------------------|
| Customer | CHEVRON - MID-CONTINENT EBIZ |
| Sales Order | 900659002 |
| Well Name | SKR |
| Rig Type | None |
| Interval | 1 |
| Well Number | 598-25-BV-22 |
| Job Date | 12-Aug-2013 |
| County | Garfield |
| State | Colorado |
| UWI/API | 0504515429 |
| Country | United States of America |
| H2S Present | Unknown |
| CO2 Present | Unknown |
| Customer Representative | Kieth Hejl |
| Halliburton Representative | Swanson |

1.2 Pipe Information

| Equipment | Top MD ft | Bottom MD ft | OD in | ID in | Weight lb/ft |
|--------------|--------------|--------------------|----------|----------|-----------------|
| Surface Pipe | 0.0 | 50.0 | 5.000 | 4.000 | |
| Casing | 0.0 | 5062.0 | 4.500 | 4.000 | 11.60 |

1.3 Perforation Intervals

| Top MD ft | Bottom MD ft | Number of Shots | Perf Density spf | Perf Diameter in |
|--------------|-----------------|-----------------|---------------------|---------------------|
| 4787.0 | 5012.0 | 27 | 0.1 | 0.340 |

2.0 ACTUAL STAGE SUMMARY

2.1 Stage Summary

| Stage Number | Stage Time | Start Time | End Time | Time min | Pump Time min | Max Treat Pr psi | Max Slurry Rate bpm |
|--------------|-----------------------|------------|-----------------------|----------|---------------|------------------|---------------------|
| 1 | 12-Aug-13 18:07:51 | 18:06:54 | 12-Aug-13 18:07:51 | 0.98 | 0.92 | 5103 | 39.4 |
| 2 | 12-Aug-13 18:11:41 | 18:07:52 | 12-Aug-13 18:11:41 | 3.83 | 3.83 | 6346 | 64.3 |
| 3 | 12-Aug-13 18:44:23 | 18:11:42 | 12-Aug-13 18:44:23 | 32.70 | 32.70 | 4817 | 64.5 |
| 4 | 12-Aug-13 19:06:13 | 18:44:24 | 12-Aug-13 19:06:13 | 21.83 | 21.83 | 4403 | 64.5 |
| 5 | 12-Aug-13 19:22:21 | 19:06:14 | 12-Aug-13 19:22:21 | 16.13 | 16.13 | 4922 | 64.5 |
| 6 | 12-Aug-13 19:25:51 | 19:22:22 | 12-Aug-13 19:25:51 | 3.50 | 3.07 | 5176 | 64.5 |
| 7 | 12-Aug-13 19:28:28 | 19:25:52 | 12-Aug-13 19:28:28 | 2.62 | 0.00 | 0 | 0.0 |

| Stage Number | Stage Time | Max Wellhead Rate bpm | Max Prop Conc lb/gal | Max Slurry Prop Conc lb/gal | Avg Treating Pressure psi | Avg Clean Rate bpm | Avg Slurry Rate bpm |
|--------------|-----------------------|-----------------------|----------------------|-----------------------------|---------------------------|--------------------|---------------------|
| 1 | 12-Aug-13 18:07:51 | 39.4 | 0.30 | 0.30 | 2557 | 32.1 | 32.2 |
| 2 | 12-Aug-13 18:11:41 | 64.3 | 0.42 | 0.42 | 5415 | 59.6 | 60.3 |
| 3 | 12-Aug-13 18:44:23 | 64.5 | 0.62 | 0.63 | 4464 | 62.9 | 64.5 |
| 4 | 12-Aug-13 19:06:13 | 64.5 | 0.85 | 0.85 | 4314 | 62.2 | 64.5 |

| Stage Number | Stage Time | Max Wellhead Rate bpm | Max Prop Conc lb/gal | Max Slurry Prop Conc lb/gal | Avg Treating Pressure psi | Avg Clean Rate bpm | Avg Slurry Rate bpm |
|--------------|-----------------------|-----------------------|----------------------|-----------------------------|---------------------------|--------------------|---------------------|
| 5 | 12-Aug-13 19:22:21 | 64.5 | 1.11 | 1.11 | 4603 | 61.6 | 64.4 |
| 6 | 12-Aug-13 19:25:51 | 64.5 | 0.15 | 0.00 | 4502 | 56.0 | 56.0 |
| 7 | 12-Aug-13 19:28:28 | 0.0 | 0.00 | 0.00 | 0 | 0.0 | 0.0 |

| Stage Number | Stage Time | Avg Wellhead Rate bpm | Avg Slurry Prop Conc lb/gal | Avg Hydraulic Horsepower hp | Clean Volume gal | Slurry Volume gal | Wellhead Volume gal |
|--------------|-----------------------|-----------------------|-----------------------------|-----------------------------|------------------|-------------------|---------------------|
| 1 | 12-Aug-13 18:07:51 | 32.2 | 0.26 | 2017 | 1296 | 1300 | 1239 |
| 2 | 12-Aug-13 18:11:41 | 60.3 | 0.27 | 8004 | 9593 | 9710 | 9710 |
| 3 | 12-Aug-13 18:44:23 | 64.5 | 0.54 | 7053 | 86423 | 88560 | 88560 |
| 4 | 12-Aug-13 19:06:13 | 64.5 | 0.80 | 6816 | 57061 | 59124 | 59124 |
| 5 | 12-Aug-13 19:22:21 | 64.4 | 1.00 | 7259 | 41724 | 43612 | 43612 |
| 6 | 12-Aug-13 19:25:51 | 56.0 | 0.00 | 6174 | 7210 | 7210 | 7210 |
| 7 | 12-Aug-13 19:28:28 | 0.0 | 0.00 | 0 | 0 | 0 | 0 |
| Total | | | | | 203307 | 209517 | 209456 |

| Stage Number | Stage Time | Prop Mass 100*lb |
|--------------|--------------------|------------------|
| 1 | 12-Aug-13 18:07:51 | 0.81 |

| Stage Number | Stage Time | Prop Mass 100*lb |
|--------------|--------------------|---------------------|
| 2 | 12-Aug-13 18:11:41 | 25.88 |
| 3 | 12-Aug-13 18:44:23 | 470.66 |
| 4 | 12-Aug-13 19:06:13 | 454.59 |
| 5 | 12-Aug-13 19:22:21 | 416.14 |
| 6 | 12-Aug-13 19:25:51 | 0.00 |
| 7 | 12-Aug-13 19:28:28 | 0.00 |
| Total | | 1368.09 |

3.0 PERFORMANCE HIGHLIGHTS

3.1 Job Summary

| | | |
|------------|--------------------|--|
| Start Time | 12-Aug-13 17:58:36 | |
| End Time | 12-Aug-13 19:28:28 | |

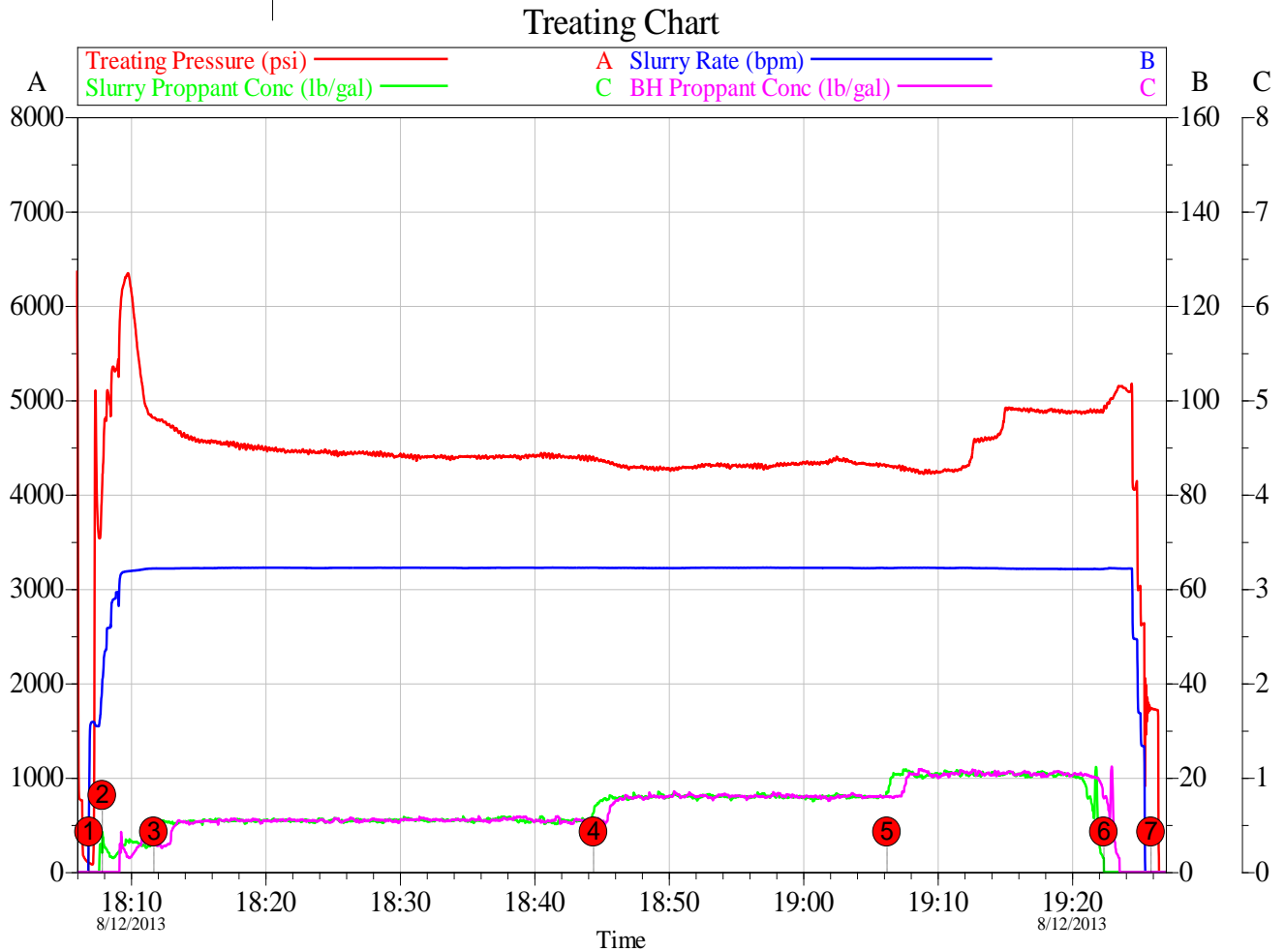
| SKR 598-25-BV-22 Stage 1 | | |
|-----------------------------|--------------|-------|
| 8/12/2013 | | |
| Engineering Notes | | |
| Engineer on Location | Daniel Davis | |
| ISDP | 1734 | psi |
| Initial Pressure(Breakdown) | 5103 | psi |
| Max Pressure | 6346 | psi |
| Average Pressure | 4499 | psi |
| Max Rate | 64.5 | bpm |
| Average Rate | 64.5 | bpm |
| Proppant Design Volume | 127,200 | lbs |
| Proppant in Formation | 128,300 | lbs |
| FR-66 Used | 44 | gals |
| BE-7 Used | 165 | gals |
| SandWedge WF | 130 | lbs |
| SCW-4212 Used | 30 | gals |
| Clean Volume | 4841 | bbls |
| Start Time | 6:06 PM | HH:MM |
| End Time | 7:28 PM | HH:MM |
| Job Notes: | | |
| Job pumped to completion. | | |

3.2 Job Event Log

| Stage Number | Event Number | Time | Description | Comment | Treating Pressure psi | Slurry Rate bpm | Braden Pressure psi | Job Slurry Vol gal |
|--------------|--------------|-----------------------|-----------------|----------------------|-----------------------|-----------------|---------------------|--------------------|
| | 1 | 12-Aug-13 17:58:36 | Start Job | Starting Job | | | | |
| 1 | | 18:06:53 | Stage 1 | Pad | 97 | 15.0 | 280 | 10 |
| | | 18:06:54 | Start Averaging | Start Avg Trt 1 | 96 | 19.5 | 280 | 24 |
| | 2 | 18:07:21 | Break Formation | Break Formation | 5103 | 31.1 | 281 | 613 |
| 2 | | 18:07:52 | Stage 2 | Proppant Laden Fluid | 4150 | 39.4 | 283 | 1300 |
| 3 | | 18:11:42 | Stage 3 | Proppant Laden Fluid | 4817 | 64.3 | 285 | 11010 |
| 4 | | 18:44:24 | Stage 4 | Proppant Laden Fluid | 4393 | 64.5 | 287 | 99570 |
| 5 | | 19:06:14 | Stage 5 | Proppant Laden Fluid | 4311 | 64.5 | 287 | 158694 |
| 6 | | 19:22:22 | Stage 6 | Flush | 4925 | 64.3 | 289 | 202307 |
| 7 | | 19:25:52 | Stage 7 | Shut-In | 1732 | 0.0 | 288 | 209517 |
| | 3 | 19:25:53 | ISIP | ISDP = 1734 psi | 1734 | 0.0 | 288 | 209517 |
| | | 19:28:28 | End Averaging | End Avg Trt 1 | 13 | 0.0 | 289 | 209517 |
| | 4 | 19:28:32 | End Job | Ending Job | 13 | 0.0 | 289 | 209517 |

4.0 ATTACHMENTS

4.1 Treating Chart

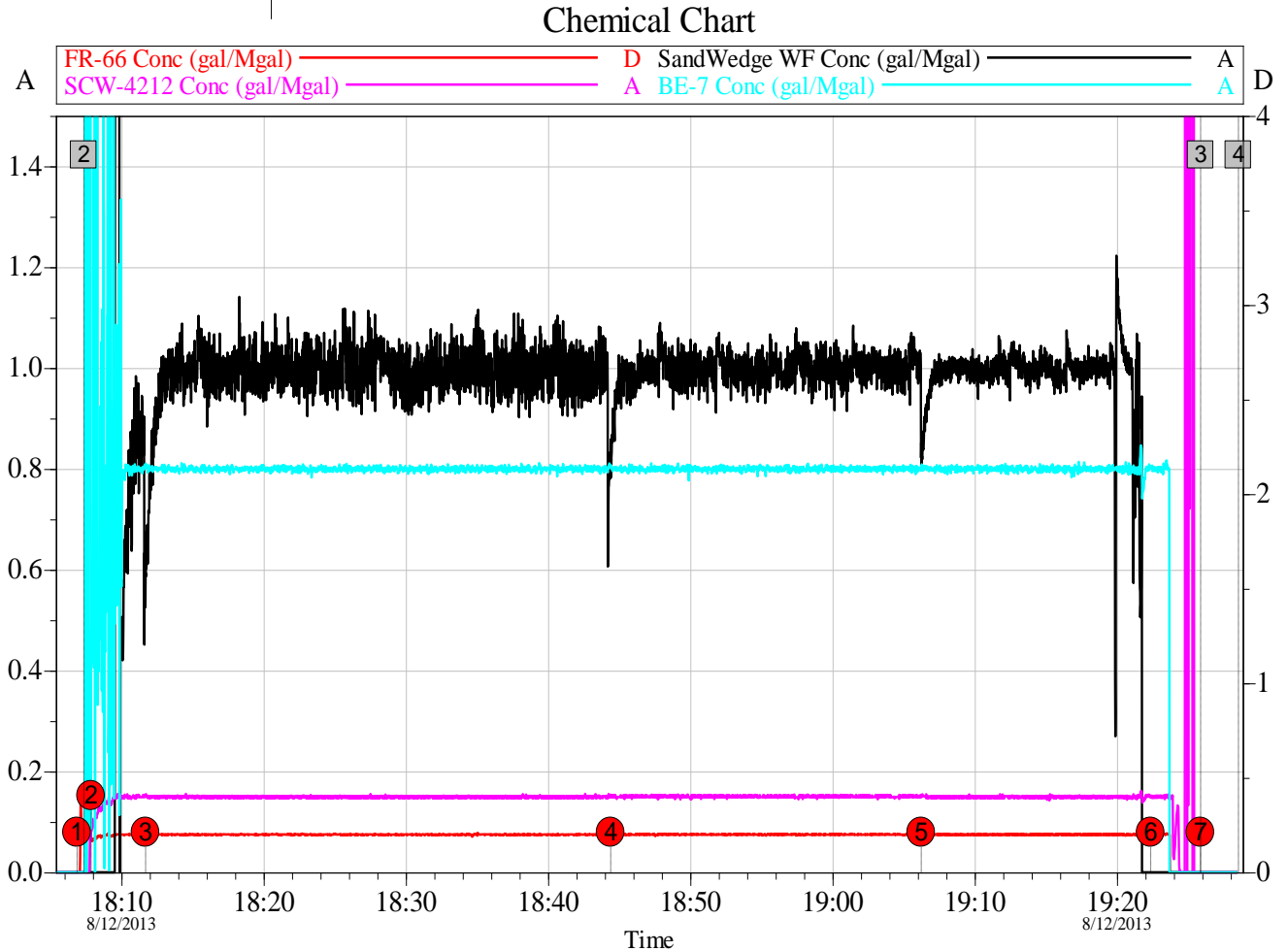


Customer: CHEVRON - MID-CONTINENT EBIZ
Well Description: SKR 598-25-BV-22

Job Date: 12-Aug-2013
UWI: 0504515429

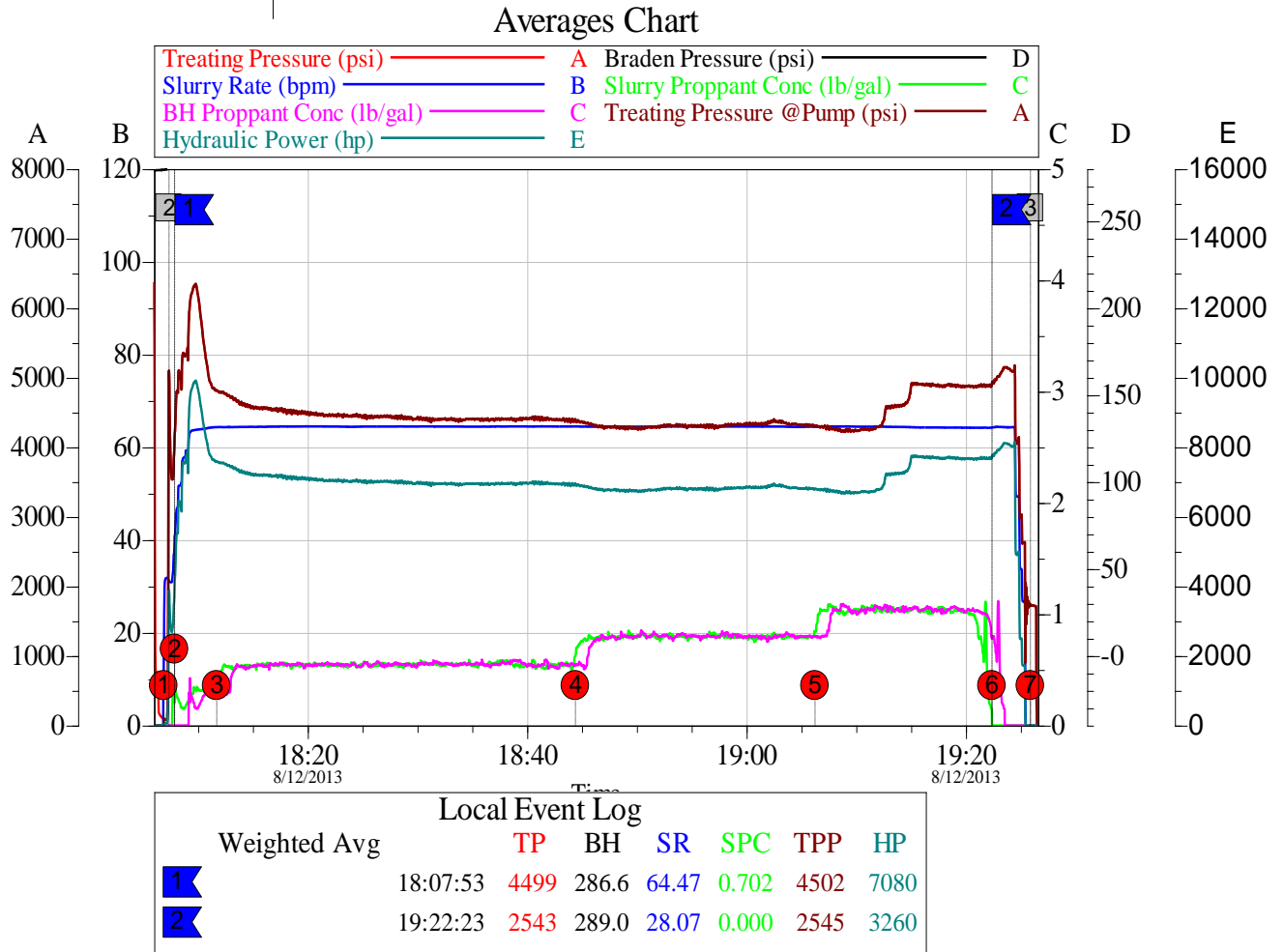
Sales Order #: 900659002

4.2 Chemical Chart



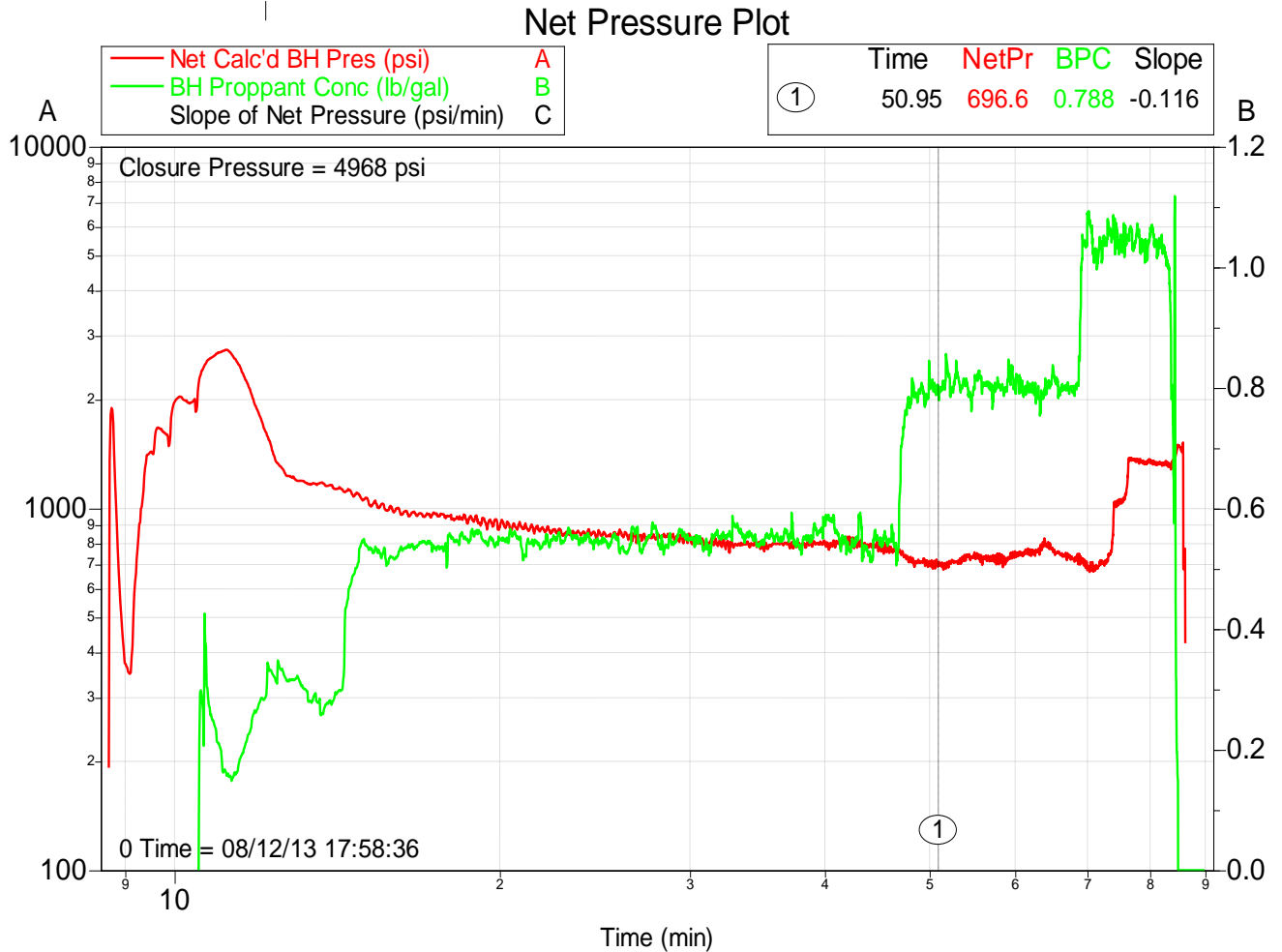
| | | |
|--|-----------------------|--------------------------|
| Customer: CHEVRON - MID-CONTINENT EBIZ | Job Date: 12-Aug-2013 | Sales Order #: 900659002 |
| Well Description: SKR 598-25-BV-22 | UWI: 0504515429 | |

4.3 Averages Chart



| | | | | | |
|-------------------|------------------------------|-----------|-------------|----------------|-----------|
| Customer: | CHEVRON - MID-CONTINENT EBIZ | Job Date: | 12-Aug-2013 | Sales Order #: | 900659002 |
| Well Description: | SKR 598-25-BV-22 | UWI: | 0504515429 | | |

4.4 Net Pressure Plot



Customer: CHEVRON - MID-CONTINENT EBIZ
Well Description: SKR 598-25-BV-22

Job Date: 12-Aug-2013
UWI: 0504515429

Sales Order #: 900659002