



XTO - Wellbore Diagram

Well Name: Hill Ranch 28-15

API/UWI	E/W Dist (ft)	E/W Ref	N/S Dist (ft)	N/S Ref	Location	Field Name	County	State/Province
05071078110000	2,567.0	FEL	366.0	FSL	T34S-R67W-S28	Purgatoire River	Las Animas	Colorado
Well Configuration Type	XTO ID B	Orig KB Elev (ft)	Gr Elev (ft)	KB-Grd (ft)	Spud Date	PBTD (All) (ftKB)	Total Depth (ftKB)	Method Of Production
Vertical	94758	8,041.00	8,041.00	0.00	8/21/2003	Original Hole - 2468.0	2,540.0	PCP

Well Config: Vertical - Original Hole, 10/22/2013 1:26:59 PM

Schematic - Actual		Incl	ftKB (TVD)	ftKB (MD)	Zones		Top (ftKB)	Btm (ftKB)									
					Raton	885.0	1,486.0										
					Vermejo	2,083.0	2,353.0										
Casing Strings																	
Casing Description	OD (in)	Wt (lbs/ft)	String Grade	Top Connection	Set Depth (ftKB)												
Conductor	12 1/4				4.0												
Casing Description	OD (in)	Wt (lbs/ft)	String Grade	Top Connection	Set Depth (ftKB)												
Surface	8 5/8	24.00	J-55		565.0												
Casing Description	OD (in)	Wt (lbs/ft)	String Grade	Top Connection	Set Depth (ftKB)												
Production	5 1/2	15.50	J-55		2,490.0												
Cement																	
Description	Type	String															
Surface Casing Cement	casing	Surface, 565.0ftKB															
Comment																	
Description	Type	String															
Production Casing Cement	casing	Production, 2,490.0ftKB															
Comment																	
Description	Type	String															
Conductor Casing Cement	casing	Conductor, 4.0ftKB															
Comment																	
Perforations																	
Date	Top (ftKB)	Btm (ftKB)	Shot Dens (shots/ft)	Hole Diameter (in)	Phasing (°)	Curr... Status	Zone										
5/20/2005	885.0	887.0	4.0	0.400	120		Raton										
5/20/2005	927.0	929.0	4.0	0.400	120		Raton										
5/20/2005	942.0	944.0	4.0	0.400	120		Raton										
5/19/2005	1,028.0	1,029.0	4.0	0.400	120		Raton										
5/19/2005	1,101.5	1,104.5	4.0	0.400	120		Raton										
5/19/2005	1,158.0	1,159.0	4.0	0.400	120		Raton										
5/19/2005	1,161.0	1,162.0	4.0	0.400	120		Raton										
5/19/2005	1,184.0	1,185.0	4.0	0.400	120		Raton										
5/19/2005	1,194.0	1,196.0	4.0	0.400	120		Raton										
5/19/2005	1,205.0	1,206.0	4.0	0.400	120		Raton										
5/19/2005	1,240.0	1,242.0	4.0	0.400	120		Raton										
5/19/2005	1,255.0	1,258.0	4.0	0.400	120		Raton										
5/18/2005	1,321.0	1,322.0	4.0	0.400	120		Raton										
5/18/2005	1,391.0	1,394.0	4.0	0.400	120		Raton										
5/18/2005	1,484.0	1,486.0	4.0	0.400	120		Raton										
9/19/2003	2,083.0	2,085.0	3.0				Vermejo										
9/19/2003	2,160.0	2,162.0	3.0				Vermejo										
9/19/2003	2,186.0	2,190.0	3.0				Vermejo										
9/19/2003	2,217.0	2,220.0	3.0				Vermejo										
9/19/2003	2,231.0	2,232.5	3.0				Vermejo										
9/18/2003	2,277.0	2,279.0	3.0				Vermejo										
9/18/2003	2,280.0	2,282.0	3.0				Vermejo										
9/18/2003	2,346.0	2,349.0	3.0				Vermejo										
9/18/2003	2,352.0	2,353.0	3.0				Vermejo										
Tubing Strings																	
Tubing Description	Run Date	Set Depth (ftKB)															
Tubing - Production	2/29/2012	2,397.5															
Tubing Components																	
Item Description	Jts	Model	OD (in)	Wt (lbs/...	Gra...	Top Thread	Len (ft)	Top (ftKB) Btm (ftKB)									
Tubing	75	T&C Upset	2 7/8	6.50	J-55		2,368.50	0.0 2,368.5									
Tubing Sub	1	T&C Upset	2 7/8	6.50	J-55		4.10	2,368.5 2,372.6									
Stator	1	30H2...	3 1/2				23.45	2,372.6 2,396.1									
No Turn Tool	1		5 1/2				1.05	2,396.1 2,397.1									

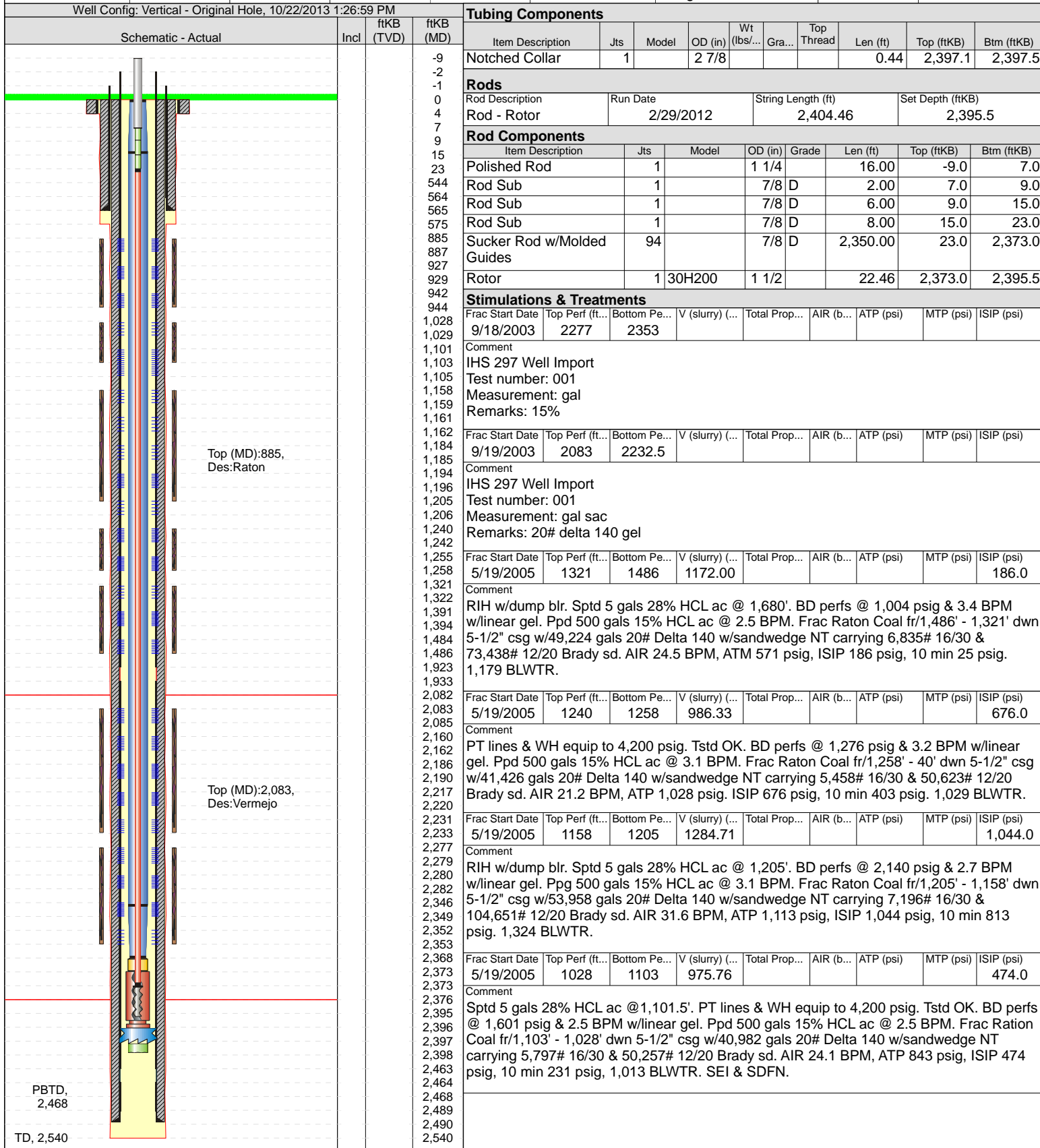


XTO - Wellbore Diagram

Well Name: Hill Ranch 28-15

API/UWI	E/W Dist (ft)	E/W Ref	N/S Dist (ft)	N/S Ref	Location	Field Name	County	State/Province
05071078110000	2,567.0	FEL	366.0	FSL	T34S-R67W-S28	Purgatoire River	Las Animas	Colorado
Well Configuration Type	XTO ID B	Orig KB Elev (ft)	Gr Elev (ft)	KB-Grd (ft)	Spud Date	PBTD (All) (ftKB)	Total Depth (ftKB)	Method Of Production
Vertical	94758	8,041.00	8,041.00	0.00	8/21/2003	Original Hole - 2468.0	2,540.0	PCP

Well Config: Vertical - Original Hole, 10/22/2013 1:26:59 PM





XTO - Wellbore Diagram

Well Name: Hill Ranch 28-15

API/UWI	E/W Dist (ft)	E/W Ref	N/S Dist (ft)	N/S Ref	Location	Field Name	County	State/Province
05071078110000	2,567.0	FEL	366.0	FSL	T34S-R67W-S28	Purgatoire River	Las Animas	Colorado
Well Configuration Type	XTO ID B	Orig KB Elev (ft)	Gr Elev (ft)	KB-Grd (ft)	Spud Date	PBTD (All) (ftKB)	Total Depth (ftKB)	Method Of Production
Vertical	94758	8,041.00	8,041.00	0.00	8/21/2003	Original Hole - 2468.0	2,540.0	PCP

Well Config: Vertical - Original Hole, 10/22/2013 1:26:59 PM

Stimulations & Treatments

Schematic - Actual	Incl	ftKB (TVD)	ftKB (MD)	Frac Start Date	Top Perf (ft...	Bottom Pe...	V (slurry) (...	Total Prop...	AIR (b...	ATP (psi)	MTP (psi)	ISIP (psi)
			-9	5/20/2005	885	944	1343.29					720.0
			-2	Comment								
			-1	Sptd 5 gals 28% HCl ac @ 943'. PT lines & WH equip to 4,200 psig. Tstd OK. BD perfs @								
			0	986 psig & 2.7 BPM w/linear gel. Ppd 500 gals 15% HCL ac @ 2.5 BPM. Frac Raton Coal								
			4	fr/944' - 885' dwn 5-1/2" csg w/56,418 gals 20# Delta 140 w/sandwedge NT carrying								
			7	10,056# 16/30 & 79,064# 12/20 Brady sd. AIR 24.1 BPM, ATP 1,384 psig. ISIP 720 psig,								
			9	10 min 481 psig. 1,377 BLWTR. RDMO Patterson WL & Halliburton frac equip. SWI &								
			15	SDFN								
			23									
			544									
			564									
			565									
			575	Comment								
			885	IHS 297 Well Import								
			887	Test number: 001								
			927	Measurement: gal lb								
			929	Remarks: 20# delta 140 gel								
			942									
			944									
			1,028									
			1,029									
			1,101									
			1,103									
			1,105									
			1,158									
			1,159									
			1,161									
			1,162									
			1,184									
			1,185									
			1,194									
			1,196									
			1,205									
			1,206									
			1,240									
			1,242									
			1,255									
			1,258									
			1,321									
			1,322									
			1,391									
			1,394									
			1,484									
			1,486									
			1,923									
			1,933									
			2,082									
			2,083									
			2,085									
			2,160									
			2,162									
			2,186									
			2,190									
			2,217									
			2,220									
			2,231									
			2,233									
			2,277									
			2,279									
			2,280									
			2,282									
			2,346									
			2,349									
			2,352									
			2,353									
			2,368									
			2,373									
			2,373									
			2,376									
			2,395									
			2,396									
			2,397									
			2,398									
			2,463									
			2,464									
			2,468									
			2,489									
			2,490									
			2,540									