

# BONANZA CREEK ENERGY OPERATING

Well Name: **North Platte K-O-13HNC**

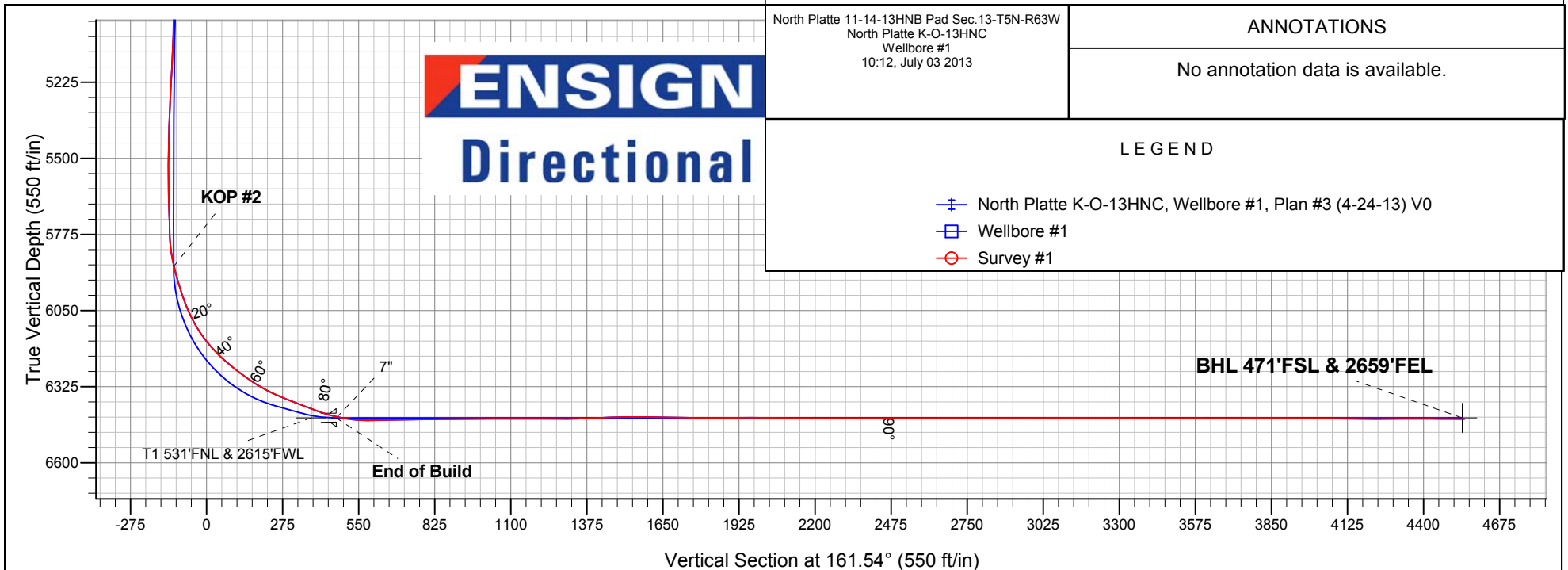
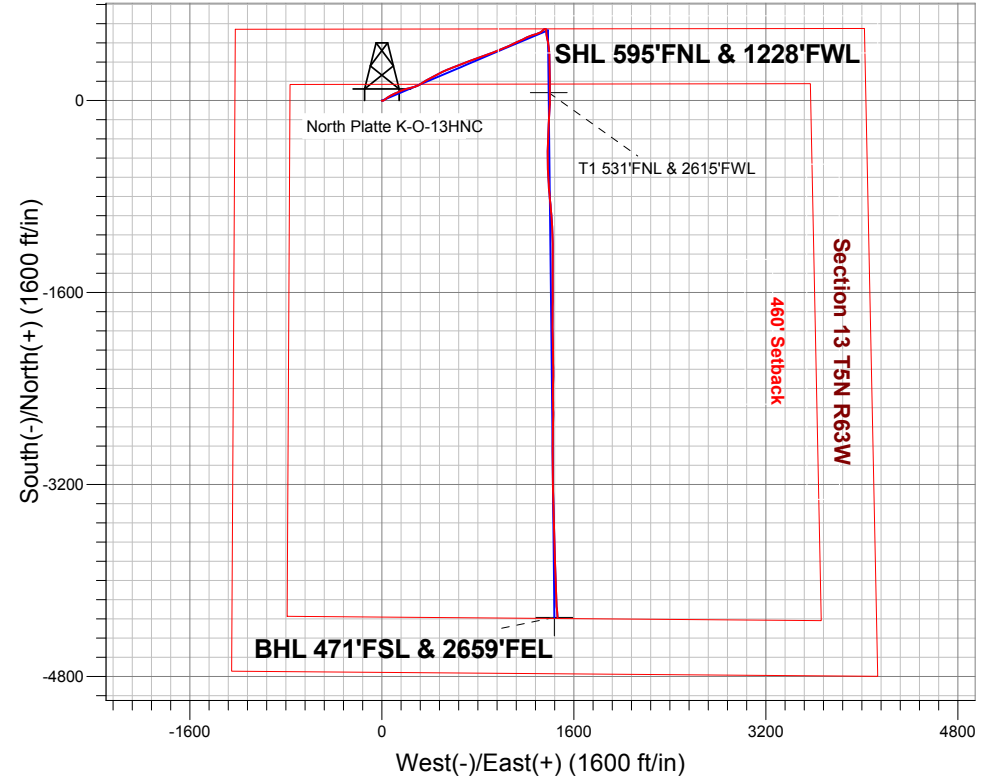
Surface Location: North Platte 11-14-13HNB Pad Sec.13-T5N-R63W  
 North American Datum 1983 , US State Plane 1983 , Colorado Northern Zone  
 Ground Elevation: 4630.0

+N/-S	+E/-W	Northing	Easting	Latitude	Longitude	Slot
0.0	0.0	1392316.98	3309146.25	40.405000	-104.389880	

Ensign 136 - RKB 12' WELL @ 4642.0ft (Ensign 136 - RKB 12')

## FINAL SURVEY

Projected Bottom Hole Location  
 11275' MD 6442' TVD 4306' S & 1463' E of SHL  
 89.6 degree Incl @ 175.4 degree AZM



North Platte 11-14-13HNB Pad Sec.13-T5N-R63W  
 North Platte K-O-13HNC  
 Wellbore #1  
 10:12, July 03 2013

### ANNOTATIONS

No annotation data is available.

### LEGEND

- North Platte K-O-13HNC, Wellbore #1, Plan #3 (4-24-13) V0
- Wellbore #1
- Survey #1



# **BONANZA CREEK ENERGY OPERATING**

**SEC.13-T5N-R63W**

**North Platte 11-14-13HNB Pad Sec.13-T5N-R63W**

**North Platte K-O-13HNC**

**Wellbore #1**

**Survey: Survey #1**

## **Standard Survey Report**

**03 July, 2013**



<b>Company:</b>	BONANZA CREEK ENERGY OPERATING	<b>Local Co-ordinate Reference:</b>	Well North Platte K-O-13HNC
<b>Project:</b>	SEC.13-T5N-R63W	<b>TVD Reference:</b>	WELL @ 4642.0ft (Ensign 136 - RKB 12')
<b>Site:</b>	North Platte 11-14-13HNB Pad Sec.13-T5N-R63W	<b>MD Reference:</b>	WELL @ 4642.0ft (Ensign 136 - RKB 12')
<b>Well:</b>	North Platte K-O-13HNC	<b>North Reference:</b>	True
<b>Wellbore:</b>	Wellbore #1	<b>Survey Calculation Method:</b>	Minimum Curvature
<b>Design:</b>	Wellbore #1	<b>Database:</b>	Landmark

Survey									
Measured Depth (ft)	Inclination (°)	Azimuth (°)	Vertical Depth (ft)	+N/-S (ft)	+E/-W (ft)	Vertical Section (ft)	Dogleg Rate (°/100ft)	Build Rate (°/100ft)	Turn Rate (°/100ft)
1,157.0	19.40	65.40	1,138.8	69.1	132.6	-23.7	0.56	-0.22	-1.54
1,248.0	19.90	65.20	1,224.5	81.9	160.4	-27.0	0.55	0.55	-0.22
1,339.0	19.60	72.60	1,310.1	93.0	189.0	-28.5	2.77	-0.33	8.13
1,441.0	18.60	75.70	1,406.5	102.1	221.1	-27.0	1.40	-0.98	3.04
1,567.0	18.60	76.30	1,526.0	111.8	260.1	-23.9	0.15	0.00	0.48
1,695.0	19.70	64.00	1,646.9	126.1	299.3	-25.1	3.26	0.86	-9.61
1,822.0	18.90	58.00	1,766.8	146.4	336.0	-32.7	1.68	-0.63	-4.72
1,949.0	18.90	56.60	1,886.9	168.6	370.6	-42.9	0.36	0.00	-1.10
2,076.0	17.20	62.90	2,007.7	188.5	404.5	-51.0	2.04	-1.34	4.96
2,203.0	17.10	63.40	2,129.1	205.4	437.9	-56.5	0.14	-0.08	0.39
2,330.0	17.30	61.80	2,250.4	222.7	471.3	-62.3	0.40	0.16	-1.26
2,456.0	19.30	64.80	2,370.0	240.4	506.6	-68.0	1.75	1.59	2.38
2,584.0	18.60	68.90	2,491.1	256.8	544.8	-71.4	1.17	-0.55	3.20
2,713.0	20.40	66.60	2,612.7	273.1	584.6	-74.3	1.52	1.40	-1.78
2,841.0	22.40	71.70	2,731.8	289.6	628.3	-76.2	2.13	1.56	3.98
2,969.0	20.80	69.10	2,850.9	305.4	672.7	-77.2	1.46	-1.25	-2.03
3,098.0	21.50	67.30	2,971.2	322.7	715.9	-79.9	0.74	0.54	-1.40
3,226.0	20.70	68.20	3,090.6	340.2	758.5	-83.0	0.67	-0.63	0.70
3,354.0	17.40	70.60	3,211.6	354.9	797.6	-84.6	2.65	-2.58	1.88
3,482.0	17.90	68.70	3,333.5	368.4	834.0	-86.0	0.60	0.39	-1.48
3,611.0	18.60	72.40	3,456.0	381.8	872.0	-86.7	1.05	0.54	2.87
3,739.0	19.10	71.20	3,577.2	394.8	911.3	-86.5	0.49	0.39	-0.94
3,868.0	19.70	70.10	3,698.9	409.0	951.7	-87.2	0.54	0.47	-0.85
3,996.0	18.30	66.20	3,819.9	424.4	990.4	-89.6	1.48	-1.09	-3.05
4,125.0	19.90	63.80	3,941.8	442.3	1,028.6	-94.5	1.38	1.24	-1.86
4,253.0	19.20	62.90	4,062.4	461.5	1,066.9	-100.6	0.60	-0.55	-0.70
4,381.0	18.20	67.10	4,183.7	478.9	1,104.1	-105.4	1.31	-0.78	3.28
4,510.0	17.30	65.40	4,306.5	494.7	1,140.1	-109.0	0.81	-0.70	-1.32
4,638.0	16.70	65.40	4,428.9	510.3	1,174.1	-113.0	0.47	-0.47	0.00
4,766.0	14.70	62.90	4,552.1	525.3	1,205.3	-117.4	1.65	-1.56	-1.95
4,895.0	15.00	68.40	4,676.8	538.9	1,235.4	-120.8	1.12	0.23	4.26
5,023.0	14.70	76.60	4,800.6	548.8	1,266.6	-120.3	1.66	-0.23	6.41
5,151.0	11.90	69.90	4,925.1	557.1	1,294.8	-119.3	2.49	-2.19	-5.23
5,280.0	9.40	62.60	5,051.9	566.5	1,316.6	-121.3	2.20	-1.94	-5.66
5,408.0	8.00	48.10	5,178.4	577.3	1,332.5	-126.5	2.02	-1.09	-11.33
5,536.0	6.40	47.60	5,305.4	588.0	1,344.4	-133.0	1.25	-1.25	-0.39
5,665.0	4.00	46.90	5,433.9	596.0	1,353.0	-137.8	1.86	-1.86	-0.54
5,793.0	2.10	108.40	5,561.7	598.3	1,358.5	-138.2	2.75	-1.48	48.05
5,922.0	1.70	99.80	5,690.7	597.2	1,362.7	-135.9	0.38	-0.31	-6.67
5,964.0	1.80	108.10	5,732.6	596.9	1,363.9	-135.2	0.65	0.24	19.76
6,007.0	2.10	119.30	5,775.6	596.3	1,365.2	-134.2	1.12	0.70	26.05
6,050.0	6.20	156.60	5,818.5	593.8	1,366.8	-131.3	10.94	9.53	86.74
6,093.0	10.70	171.90	5,861.0	587.7	1,368.3	-125.1	11.61	10.47	35.58
6,136.0	14.60	175.60	5,903.0	578.3	1,369.3	-115.9	9.26	9.07	8.60
6,178.0	16.80	174.30	5,943.4	567.0	1,370.3	-104.8	5.30	5.24	-3.10
6,221.0	18.50	174.90	5,984.4	554.0	1,371.5	-92.1	3.98	3.95	1.40
6,264.0	21.30	171.00	6,024.8	539.5	1,373.4	-77.8	7.20	6.51	-9.07
6,307.0	25.20	168.20	6,064.3	522.8	1,376.5	-61.0	9.42	9.07	-6.51
6,350.0	30.20	169.40	6,102.4	503.2	1,380.3	-41.2	11.70	11.63	2.79
6,393.0	35.60	170.00	6,138.5	480.3	1,384.5	-18.1	12.58	12.56	1.40
6,435.0	40.50	172.10	6,171.5	454.7	1,388.5	7.5	12.07	11.67	5.00
6,478.0	45.30	174.30	6,203.0	425.6	1,391.9	36.1	11.69	11.16	5.12
6,521.0	49.30	176.80	6,232.2	394.1	1,394.4	66.8	10.24	9.30	5.81

<b>Company:</b>	BONANZA CREEK ENERGY OPERATING	<b>Local Co-ordinate Reference:</b>	Well North Platte K-O-13HNC
<b>Project:</b>	SEC.13-T5N-R63W	<b>TVD Reference:</b>	WELL @ 4642.0ft (Ensign 136 - RKB 12')
<b>Site:</b>	North Platte 11-14-13HNB Pad Sec.13-T5N-R63W	<b>MD Reference:</b>	WELL @ 4642.0ft (Ensign 136 - RKB 12')
<b>Well:</b>	North Platte K-O-13HNC	<b>North Reference:</b>	True
<b>Wellbore:</b>	Wellbore #1	<b>Survey Calculation Method:</b>	Minimum Curvature
<b>Design:</b>	Wellbore #1	<b>Database:</b>	Landmark

Survey									
Measured Depth (ft)	Inclination (°)	Azimuth (°)	Vertical Depth (ft)	+N/-S (ft)	+E/-W (ft)	Vertical Section (ft)	Dogleg Rate (°/100ft)	Build Rate (°/100ft)	Turn Rate (°/100ft)
6,564.0	52.60	178.90	6,259.3	360.8	1,395.6	98.8	8.56	7.67	4.88
6,607.0	55.00	180.00	6,284.7	326.1	1,395.9	131.8	5.95	5.58	2.56
6,649.0	57.90	178.60	6,307.9	291.1	1,396.4	165.2	7.44	6.90	-3.33
6,692.0	61.80	178.70	6,329.5	253.9	1,397.2	200.7	9.07	9.07	0.23
6,735.0	65.40	178.00	6,348.6	215.4	1,398.3	237.6	8.50	8.37	-1.63
6,778.0	68.30	178.90	6,365.5	175.9	1,399.4	275.4	7.01	6.74	2.09
6,821.0	70.00	179.40	6,380.8	135.7	1,400.0	313.7	4.10	3.95	1.16
6,863.0	70.30	179.60	6,395.1	96.2	1,400.4	351.3	0.84	0.71	0.48
6,906.0	70.50	180.10	6,409.5	55.7	1,400.5	389.8	1.19	0.47	1.16
<b>T1 531'FNL &amp; 2615'FWL</b>									
6,949.0	73.20	180.30	6,422.9	14.9	1,400.3	428.5	6.29	6.28	0.47
6,992.0	77.50	181.70	6,433.7	-26.7	1,399.6	467.7	10.48	10.00	3.26
7,034.0	82.30	183.30	6,441.1	-68.0	1,397.8	506.3	12.03	11.43	3.81
7,148.0	91.50	183.50	6,447.3	-181.5	1,391.0	611.9	8.07	8.07	0.18
7,191.0	91.60	183.10	6,446.1	-224.4	1,388.6	651.8	0.96	0.23	-0.93
7,233.0	90.60	182.80	6,445.3	-266.4	1,386.4	690.9	2.49	-2.38	-0.71
7,276.0	91.30	182.40	6,444.6	-309.3	1,384.4	731.0	1.87	1.63	-0.93
7,318.0	90.30	181.40	6,444.0	-351.3	1,383.1	770.4	3.37	-2.38	-2.38
7,361.0	91.30	181.00	6,443.4	-394.3	1,382.2	810.9	2.50	2.33	-0.93
7,404.0	91.00	179.80	6,442.5	-437.3	1,381.9	851.6	2.88	-0.70	-2.79
7,447.0	91.50	179.80	6,441.6	-480.3	1,382.0	892.4	1.16	1.16	0.00
7,490.0	89.60	179.10	6,441.2	-523.3	1,382.4	933.4	4.71	-4.42	-1.63
7,532.0	90.00	178.90	6,441.3	-565.2	1,383.1	973.4	1.06	0.95	-0.48
7,575.0	90.00	177.70	6,441.3	-608.2	1,384.4	1,014.6	2.79	0.00	-2.79
7,618.0	89.70	175.90	6,441.4	-651.2	1,386.8	1,056.1	4.24	-0.70	-4.19
7,661.0	90.00	176.30	6,441.6	-694.1	1,389.7	1,097.7	1.16	0.70	0.93
7,703.0	89.60	175.80	6,441.7	-736.0	1,392.6	1,138.4	1.52	-0.95	-1.19
7,746.0	90.10	174.90	6,441.8	-778.8	1,396.1	1,180.2	2.39	1.16	-2.09
7,789.0	89.50	174.30	6,442.0	-821.6	1,400.2	1,222.1	1.97	-1.40	-1.40
7,832.0	89.80	174.50	6,442.2	-864.4	1,404.4	1,264.0	0.84	0.70	0.47
7,874.0	91.30	174.70	6,441.8	-906.2	1,408.3	1,304.9	3.60	3.57	0.48
7,917.0	92.10	175.40	6,440.5	-949.1	1,412.0	1,346.7	2.47	1.86	1.63
7,960.0	92.20	176.50	6,438.9	-991.9	1,415.1	1,388.3	2.57	0.23	2.56
8,003.0	91.80	176.50	6,437.4	-1,034.8	1,417.7	1,429.8	0.93	-0.93	0.00
8,045.0	91.90	177.30	6,436.1	-1,076.7	1,420.0	1,470.3	1.92	0.24	1.90
8,088.0	90.70	178.00	6,435.1	-1,119.7	1,421.7	1,511.6	3.23	-2.79	1.63
8,131.0	90.10	178.60	6,434.8	-1,162.7	1,423.0	1,552.8	1.97	-1.40	1.40
8,174.0	89.60	179.10	6,434.9	-1,205.6	1,423.9	1,593.9	1.64	-1.16	1.16
8,216.0	88.90	179.60	6,435.5	-1,247.6	1,424.3	1,633.9	2.05	-1.67	1.19
8,259.0	88.70	180.30	6,436.4	-1,290.6	1,424.4	1,674.7	1.69	-0.47	1.63
8,302.0	89.10	179.60	6,437.2	-1,333.6	1,424.4	1,715.5	1.87	0.93	-1.63
8,345.0	89.40	179.80	6,437.8	-1,376.6	1,424.6	1,756.3	0.84	0.70	0.47
8,388.0	89.90	181.00	6,438.0	-1,419.6	1,424.3	1,797.0	3.02	1.16	2.79
8,430.0	90.10	180.30	6,438.0	-1,461.6	1,423.9	1,836.7	1.73	0.48	-1.67
8,473.0	90.70	180.00	6,437.7	-1,504.6	1,423.7	1,877.5	1.56	1.40	-0.70
8,516.0	90.60	179.40	6,437.2	-1,547.6	1,424.0	1,918.3	1.41	-0.23	-1.40
8,559.0	90.00	179.60	6,437.0	-1,590.6	1,424.3	1,959.2	1.47	-1.40	0.47
8,602.0	89.60	180.50	6,437.2	-1,633.6	1,424.3	2,000.0	2.29	-0.93	2.09
8,644.0	88.40	181.20	6,437.9	-1,675.6	1,423.7	2,039.7	3.31	-2.86	1.67
8,687.0	89.30	180.30	6,438.8	-1,718.6	1,423.1	2,080.3	2.96	2.09	-2.09
8,730.0	89.30	180.30	6,439.3	-1,761.6	1,422.9	2,121.0	0.00	0.00	0.00
8,773.0	90.00	180.70	6,439.5	-1,804.6	1,422.5	2,161.7	1.87	1.63	0.93
8,815.0	89.60	179.80	6,439.7	-1,846.6	1,422.3	2,201.5	2.34	-0.95	-2.14

<b>Company:</b>	BONANZA CREEK ENERGY OPERATING	<b>Local Co-ordinate Reference:</b>	Well North Platte K-O-13HNC
<b>Project:</b>	SEC.13-T5N-R63W	<b>TVD Reference:</b>	WELL @ 4642.0ft (Ensign 136 - RKB 12')
<b>Site:</b>	North Platte 11-14-13HNB Pad Sec.13-T5N-R63W	<b>MD Reference:</b>	WELL @ 4642.0ft (Ensign 136 - RKB 12')
<b>Well:</b>	North Platte K-O-13HNC	<b>North Reference:</b>	True
<b>Wellbore:</b>	Wellbore #1	<b>Survey Calculation Method:</b>	Minimum Curvature
<b>Design:</b>	Wellbore #1	<b>Database:</b>	Landmark

Survey									
Measured Depth (ft)	Inclination (°)	Azimuth (°)	Vertical Depth (ft)	+N/-S (ft)	+E/-W (ft)	Vertical Section (ft)	Dogleg Rate (°/100ft)	Build Rate (°/100ft)	Turn Rate (°/100ft)
8,858.0	89.80	179.80	6,439.9	-1,889.6	1,422.5	2,242.3	0.47	0.47	0.00
8,901.0	90.00	179.30	6,440.0	-1,932.6	1,422.8	2,283.2	1.25	0.47	-1.16
8,944.0	89.90	179.10	6,440.0	-1,975.6	1,423.4	2,324.2	0.52	-0.23	-0.47
8,987.0	89.90	178.70	6,440.1	-2,018.6	1,424.3	2,365.2	0.93	0.00	-0.93
9,029.0	90.20	179.40	6,440.1	-2,060.5	1,425.0	2,405.3	1.81	0.71	1.67
9,072.0	90.20	179.30	6,439.9	-2,103.5	1,425.4	2,446.2	0.23	0.00	-0.23
9,115.0	90.20	179.40	6,439.8	-2,146.5	1,425.9	2,487.2	0.23	0.00	0.23
9,158.0	90.30	179.40	6,439.6	-2,189.5	1,426.4	2,528.1	0.23	0.23	0.00
9,200.0	90.10	180.00	6,439.4	-2,231.5	1,426.6	2,568.0	1.51	-0.48	1.43
9,243.0	90.20	179.80	6,439.3	-2,274.5	1,426.7	2,608.9	0.52	0.23	-0.47
9,286.0	89.70	181.20	6,439.4	-2,317.5	1,426.3	2,649.5	3.46	-1.16	3.26
9,329.0	90.00	181.00	6,439.5	-2,360.5	1,425.5	2,690.1	0.84	0.70	-0.47
9,371.0	90.10	180.50	6,439.4	-2,402.5	1,424.9	2,729.7	1.21	0.24	-1.19
9,414.0	90.20	180.00	6,439.3	-2,445.5	1,424.7	2,770.5	1.19	0.23	-1.16
9,457.0	90.10	180.00	6,439.2	-2,488.5	1,424.7	2,811.3	0.23	-0.23	0.00
9,500.0	90.30	178.70	6,439.1	-2,531.5	1,425.2	2,852.2	3.06	0.47	-3.02
9,543.0	90.50	178.60	6,438.8	-2,574.5	1,426.2	2,893.3	0.52	0.47	-0.23
9,585.0	89.90	179.80	6,438.6	-2,616.5	1,426.8	2,933.3	3.19	-1.43	2.86
9,628.0	90.50	180.10	6,438.5	-2,659.5	1,426.9	2,974.1	1.56	1.40	0.70
9,671.0	90.10	181.90	6,438.2	-2,702.5	1,426.1	3,014.7	4.29	-0.93	4.19
9,714.0	90.40	180.70	6,438.0	-2,745.5	1,425.1	3,055.2	2.88	0.70	-2.79
9,756.0	89.60	181.00	6,438.0	-2,787.5	1,424.5	3,094.8	2.03	-1.90	0.71
9,799.0	90.10	181.00	6,438.2	-2,830.5	1,423.8	3,135.4	1.16	1.16	0.00
9,842.0	90.80	181.20	6,437.8	-2,873.5	1,422.9	3,175.9	1.69	1.63	0.47
9,885.0	89.30	180.90	6,437.8	-2,916.4	1,422.1	3,216.4	3.56	-3.49	-0.70
9,928.0	89.00	179.60	6,438.4	-2,959.4	1,422.0	3,257.2	3.10	-0.70	-3.02
9,970.0	89.30	179.60	6,439.0	-3,001.4	1,422.3	3,297.1	0.71	0.71	0.00
10,013.0	90.10	180.00	6,439.3	-3,044.4	1,422.4	3,337.9	2.08	1.86	0.93
10,056.0	89.90	179.40	6,439.3	-3,087.4	1,422.6	3,378.8	1.47	-0.47	-1.40
10,099.0	90.20	179.10	6,439.2	-3,130.4	1,423.2	3,419.8	0.99	0.70	-0.70
10,142.0	89.80	178.60	6,439.2	-3,173.4	1,424.1	3,460.8	1.49	-0.93	-1.16
10,184.0	89.60	178.20	6,439.4	-3,215.4	1,425.2	3,501.0	1.06	-0.48	-0.95
10,227.0	90.90	179.10	6,439.3	-3,258.4	1,426.2	3,542.1	3.68	3.02	2.09
10,270.0	90.50	178.00	6,438.7	-3,301.4	1,427.3	3,583.3	2.72	-0.93	-2.56
10,313.0	88.50	178.40	6,439.1	-3,344.3	1,428.7	3,624.5	4.74	-4.65	0.93
10,356.0	89.90	178.70	6,439.7	-3,387.3	1,429.8	3,665.6	3.33	3.26	0.70
10,398.0	91.00	178.60	6,439.4	-3,429.3	1,430.8	3,705.7	2.63	2.62	-0.24
10,441.0	91.00	178.40	6,438.6	-3,472.3	1,431.9	3,746.9	0.47	0.00	-0.47
10,484.0	89.40	178.20	6,438.5	-3,515.3	1,433.2	3,788.0	3.75	-3.72	-0.47
10,529.0	90.50	178.90	6,438.5	-3,560.3	1,434.3	3,831.1	2.90	2.44	1.56
10,571.0	89.80	179.10	6,438.4	-3,602.3	1,435.0	3,871.2	1.73	-1.67	0.48
10,614.0	89.90	178.00	6,438.5	-3,645.2	1,436.1	3,912.3	2.57	0.23	-2.56
10,657.0	88.60	178.20	6,439.1	-3,688.2	1,437.5	3,953.5	3.06	-3.02	0.47
10,700.0	89.20	178.40	6,439.9	-3,731.2	1,438.8	3,994.7	1.47	1.40	0.47
10,743.0	89.40	178.60	6,440.4	-3,774.2	1,439.9	4,035.8	0.66	0.47	0.47
10,785.0	89.40	179.30	6,440.9	-3,816.2	1,440.7	4,075.9	1.67	0.00	1.67
10,828.0	89.50	178.90	6,441.3	-3,859.1	1,441.4	4,116.9	0.96	0.23	-0.93
10,873.0	89.80	178.00	6,441.6	-3,904.1	1,442.6	4,160.0	2.11	0.67	-2.00
10,918.0	90.00	177.70	6,441.6	-3,949.1	1,444.3	4,203.1	0.80	0.44	-0.67
10,962.0	90.00	177.20	6,441.6	-3,993.1	1,446.2	4,245.5	1.14	0.00	-1.14
11,007.0	90.10	177.50	6,441.6	-4,038.0	1,448.3	4,288.8	0.70	0.22	0.67
11,052.0	90.30	176.80	6,441.4	-4,082.9	1,450.6	4,332.1	1.62	0.44	-1.56
11,097.0	90.00	178.40	6,441.3	-4,127.9	1,452.5	4,375.4	3.62	-0.67	3.56

<b>Company:</b>	BONANZA CREEK ENERGY OPERATING	<b>Local Co-ordinate Reference:</b>	Well North Platte K-O-13HNC
<b>Project:</b>	SEC.13-T5N-R63W	<b>TVD Reference:</b>	WELL @ 4642.0ft (Ensign 136 - RKB 12')
<b>Site:</b>	North Platte 11-14-13HNB Pad Sec.13-T5N-R63W	<b>MD Reference:</b>	WELL @ 4642.0ft (Ensign 136 - RKB 12')
<b>Well:</b>	North Platte K-O-13HNC	<b>North Reference:</b>	True
<b>Wellbore:</b>	Wellbore #1	<b>Survey Calculation Method:</b>	Minimum Curvature
<b>Design:</b>	Wellbore #1	<b>Database:</b>	Landmark

Survey									
Measured Depth (ft)	Inclination (°)	Azimuth (°)	Vertical Depth (ft)	+N/-S (ft)	+E/-W (ft)	Vertical Section (ft)	Dogleg Rate (°/100ft)	Build Rate (°/100ft)	Turn Rate (°/100ft)
11,141.0	89.80	177.20	6,441.4	-4,171.9	1,454.1	4,417.6	2.76	-0.45	-2.73
11,186.0	89.80	176.50	6,441.6	-4,216.8	1,456.6	4,461.0	1.56	0.00	-1.56
11,220.0	89.60	175.40	6,441.7	-4,250.7	1,459.0	4,494.0	3.29	-0.59	-3.24
11,273.2	89.60	175.40	6,442.1	-4,303.8	1,463.3	4,545.6	0.00	0.00	0.00
<b>BHL 470'FSL &amp; 2685'FEL</b>									
11,275.0	89.60	175.40	6,442.1	-4,305.5	1,463.4	4,547.4	0.00	0.00	0.00

Design Targets									
Target Name	Dip Angle (°)	Dip Dir. (°)	TVD (ft)	+N/-S (ft)	+E/-W (ft)	Northing (ft)	Easting (ft)	Latitude	Longitude
- hit/miss target									
- Shape									
T1 531'FNL & 2615'FV	0.00	0.00	6,438.0	65.6	1,386.9	1,392,399.99	3,310,534.98	40.405180	-104.384900
- survey misses target center by 33.1ft at 6906.0ft MD (6409.5 TVD, 55.7 N, 1400.5 E)									
- Point									
BHL 470'FSL & 2685'FV	0.00	0.00	6,438.0	-4,306.1	1,434.5	1,388,029.37	3,310,637.30	40.393180	-104.384730
- survey misses target center by 29.1ft at 11273.2ft MD (6442.1 TVD, -4303.8 N, 1463.3 E)									
- Point									

Checked By: \_\_\_\_\_ Approved By: \_\_\_\_\_ Date: \_\_\_\_\_