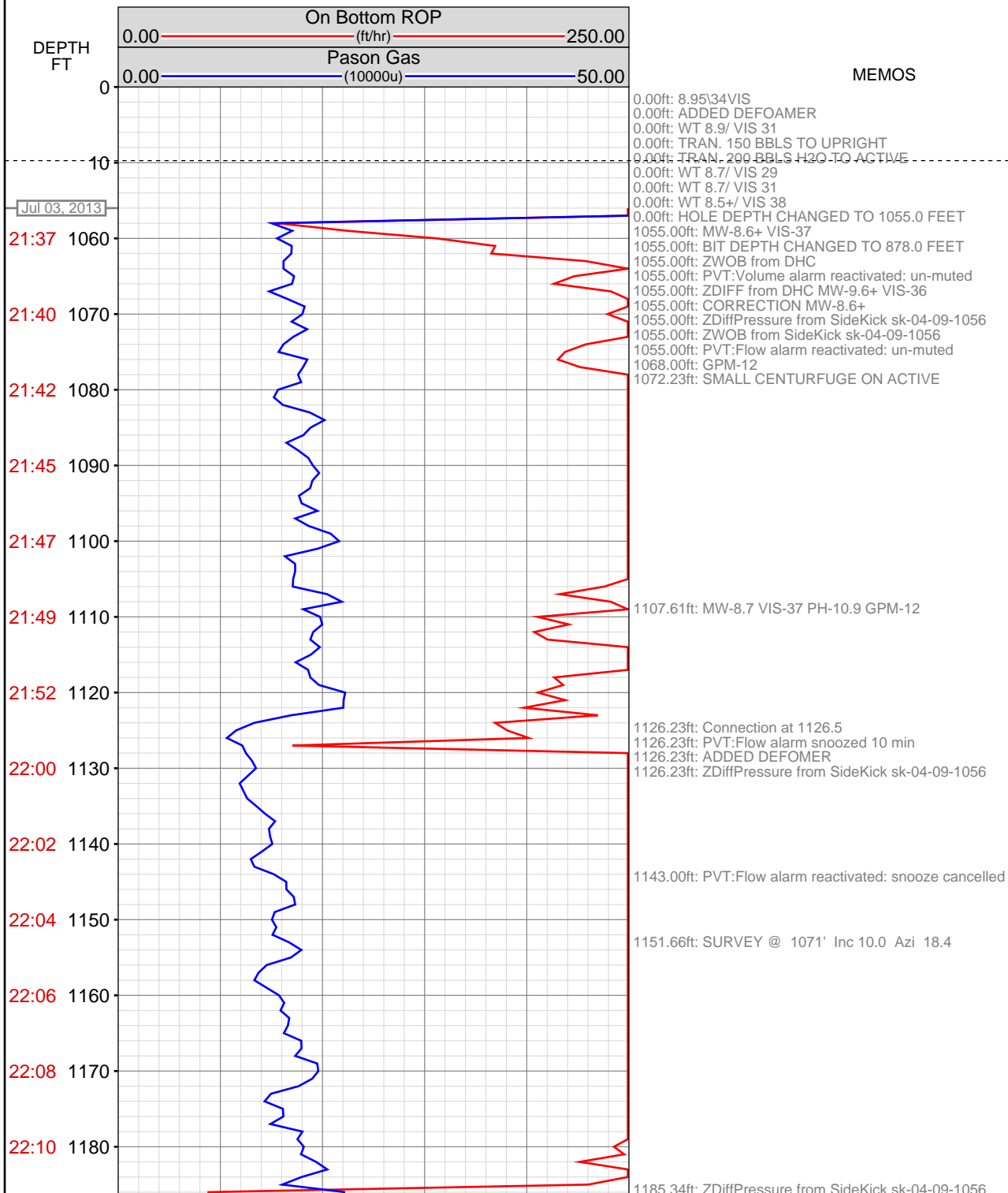
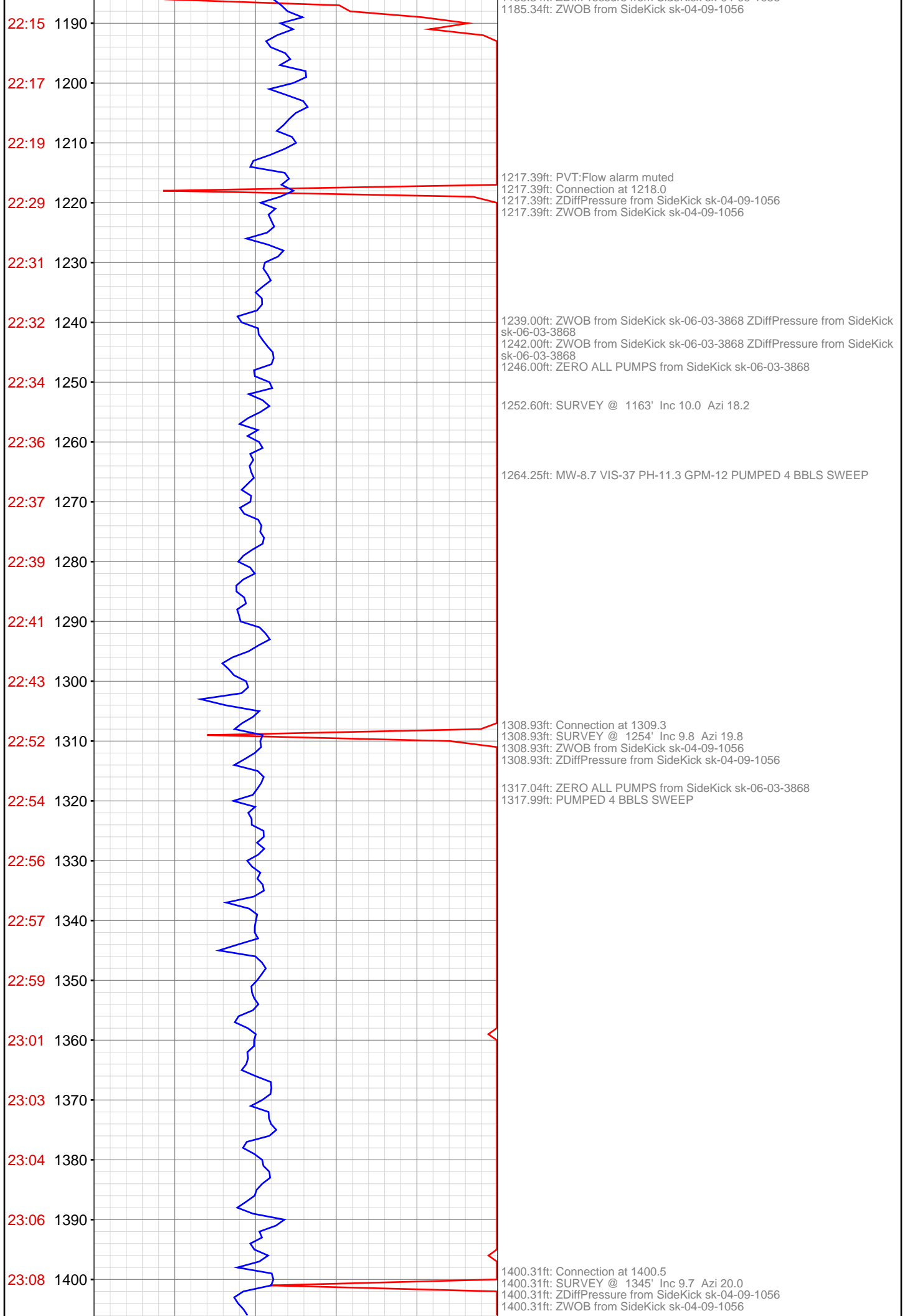
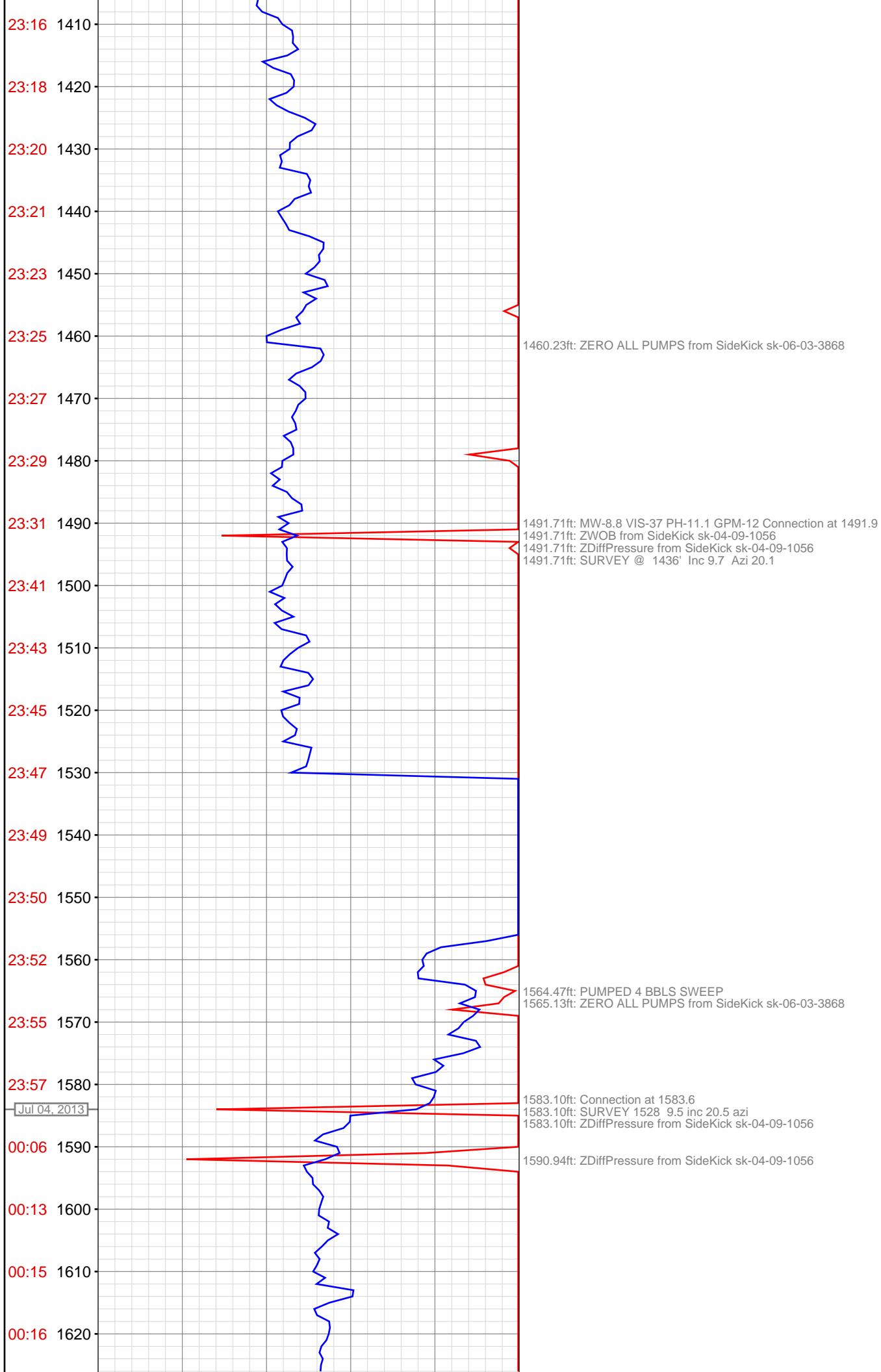


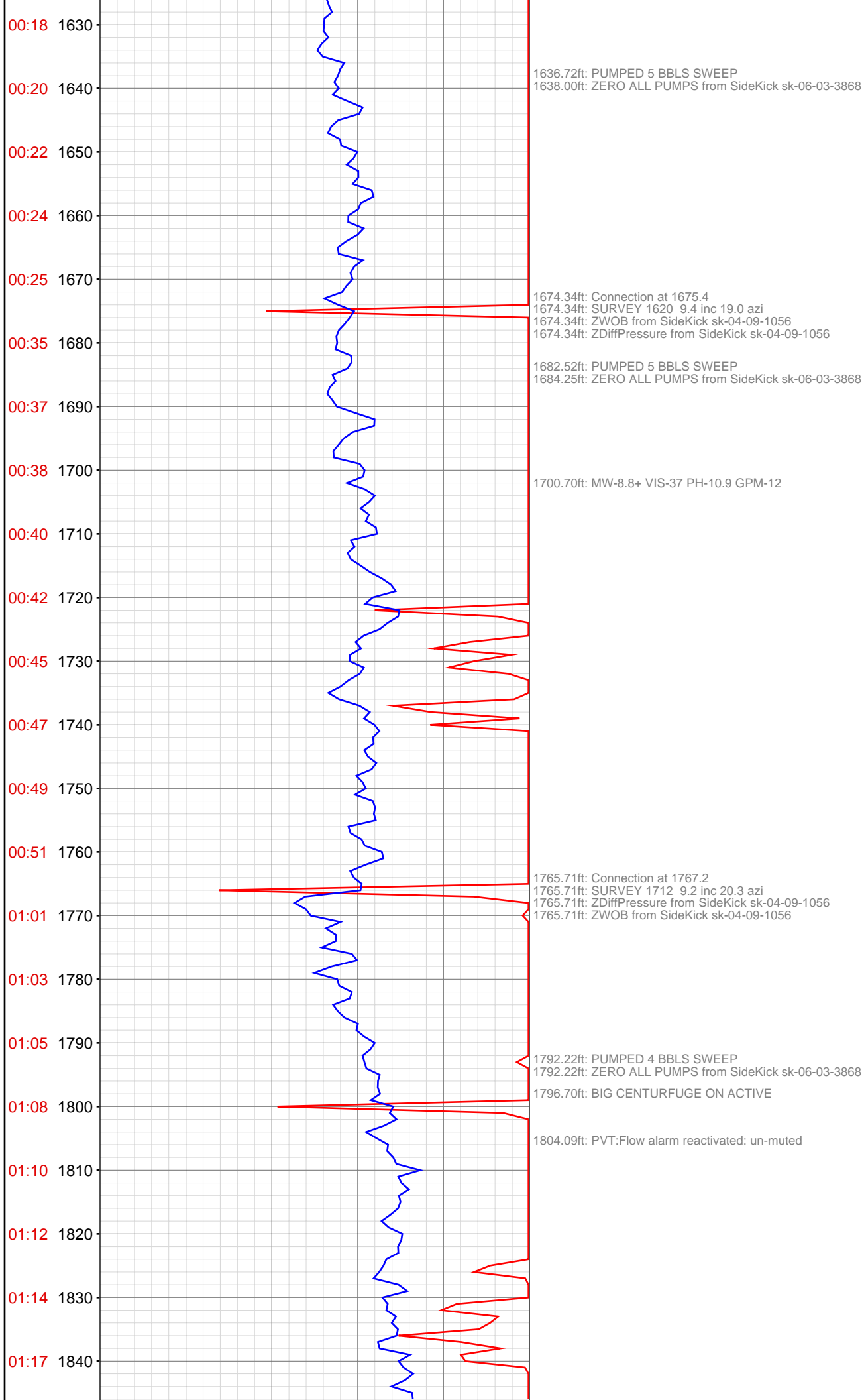
OPERATOR: EnCana Oil & Gas (USA), Inc.
WELL: HAGEN 15-14D
FIELD:
LOCATION: NE NW SEC 22, T007S, R95W6
COUNTRY: USA
RIG: Pat-UTI 303

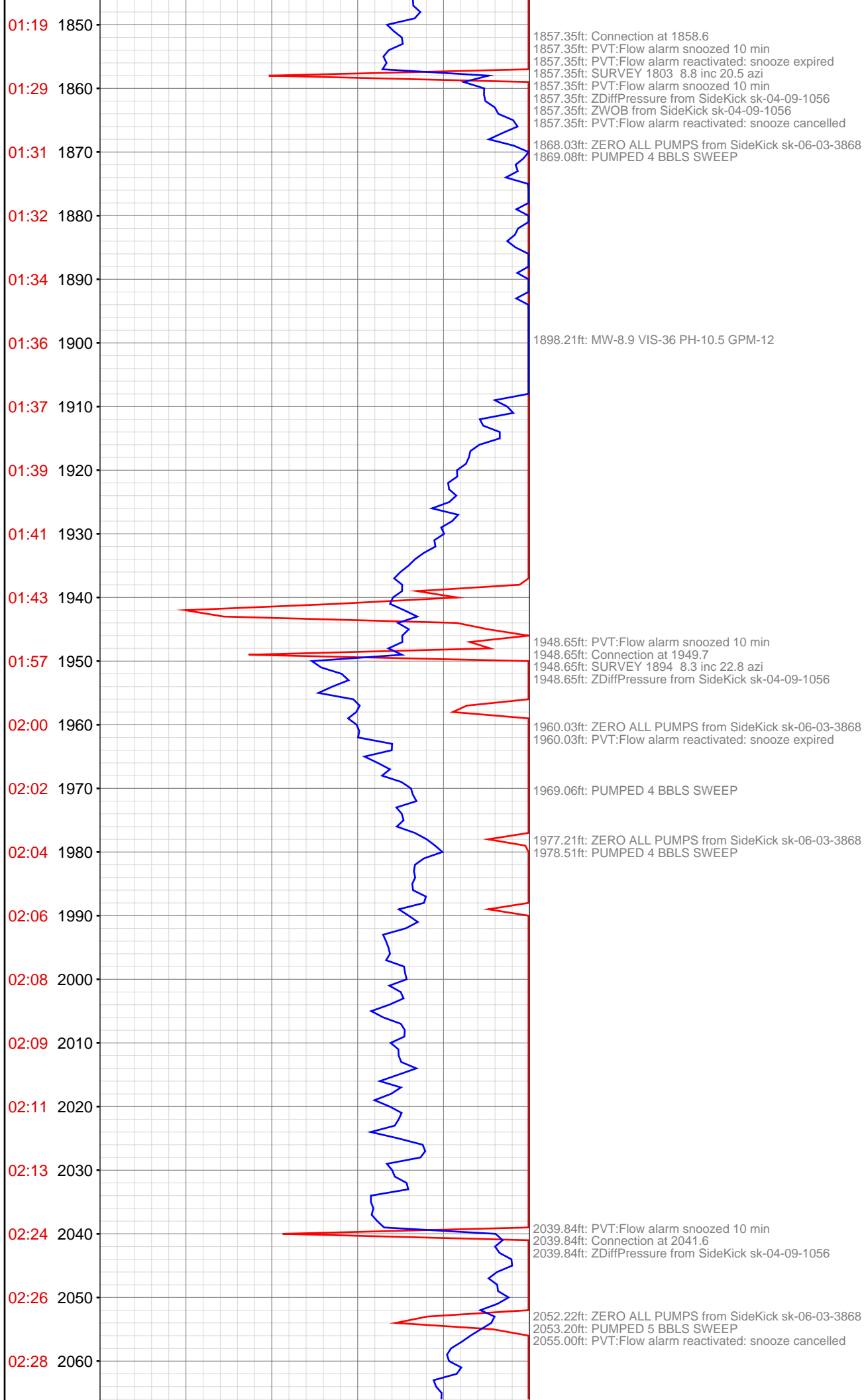
CONTRACTOR: Patterson-UTI Drilling Company
UNIQUE WELL ID: 05 045 22022
SPUD DATE: Jul 03, 2013 21:30
RELEASE DATE: Jul 07, 2013 20:00

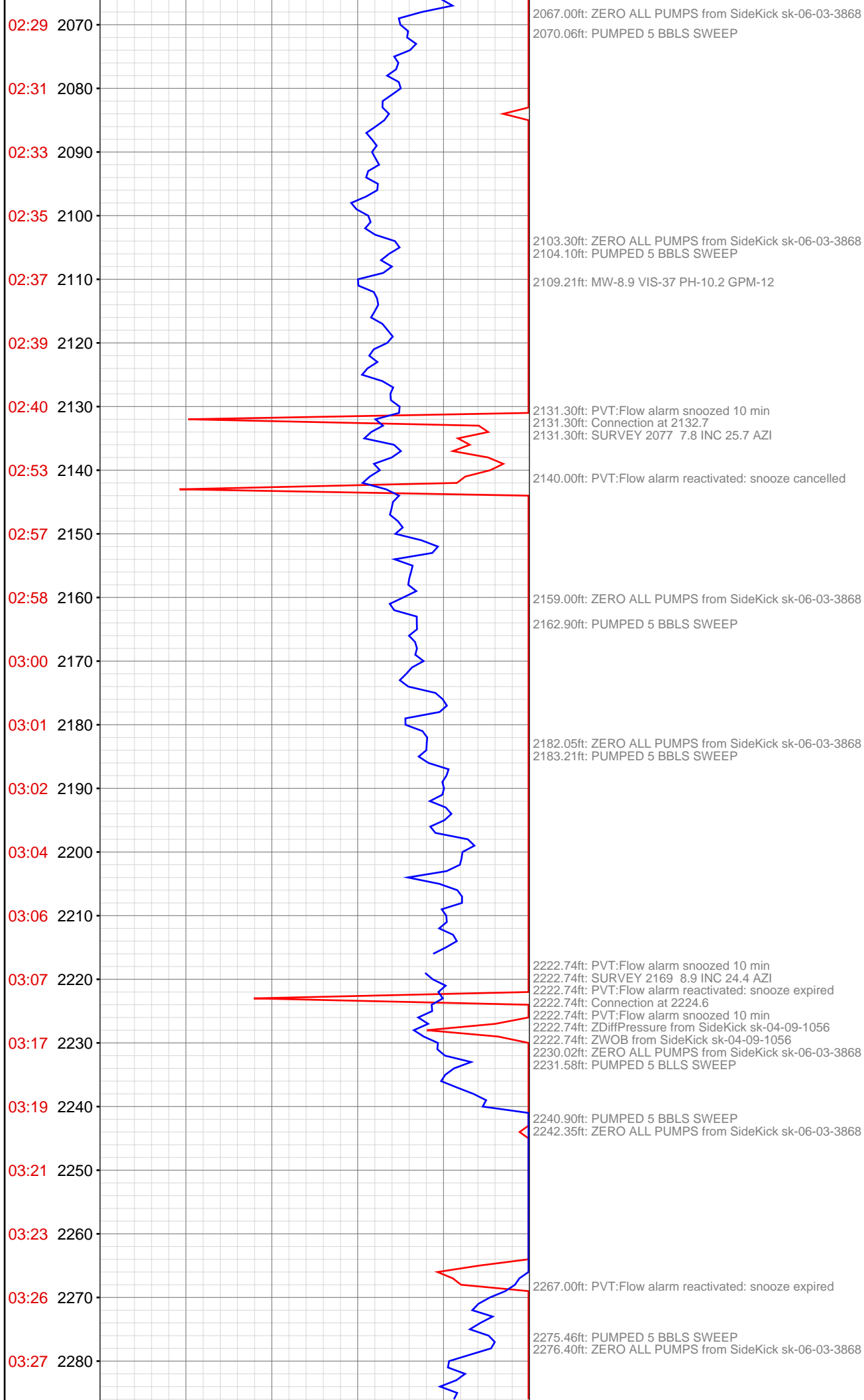


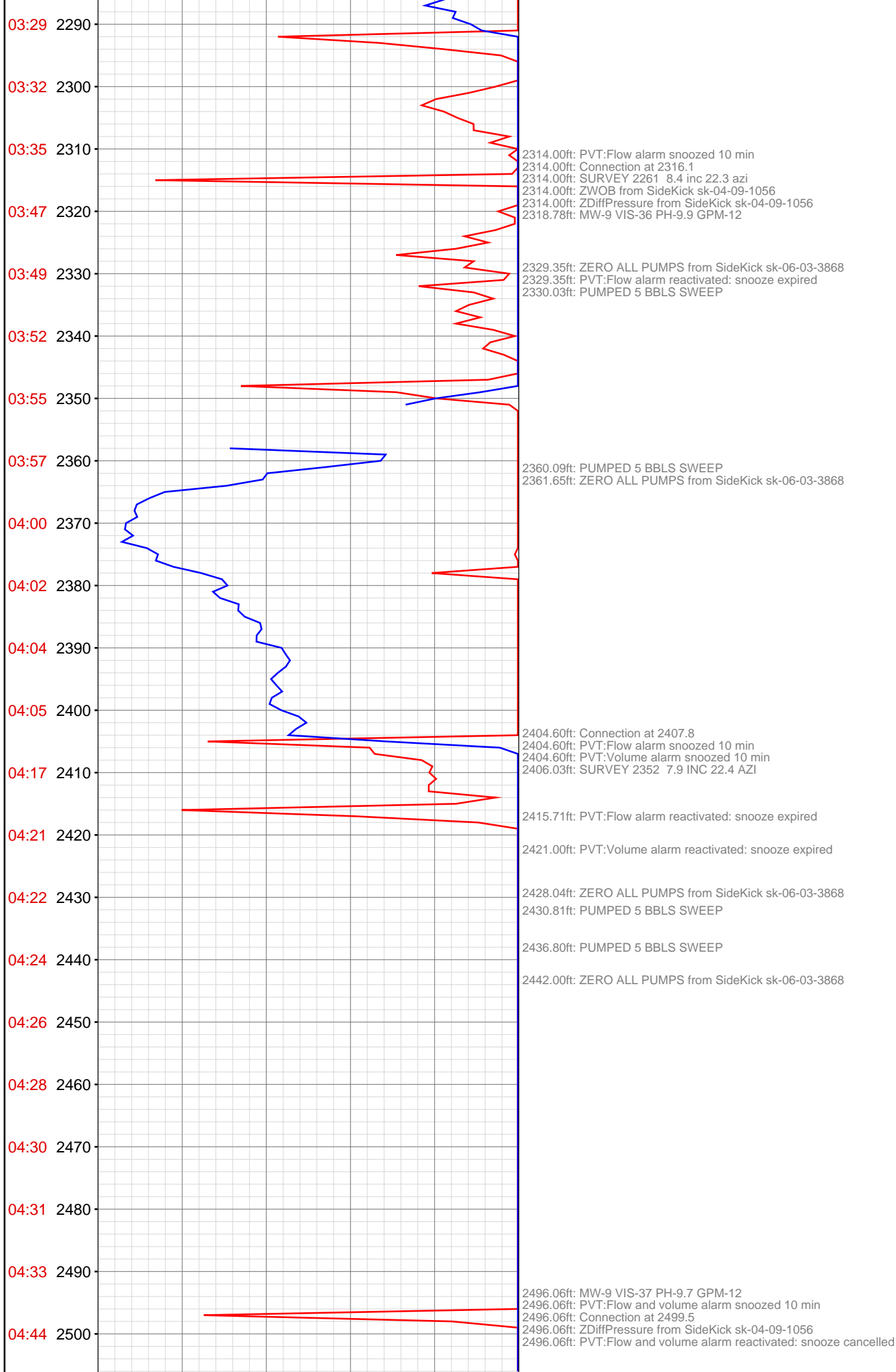


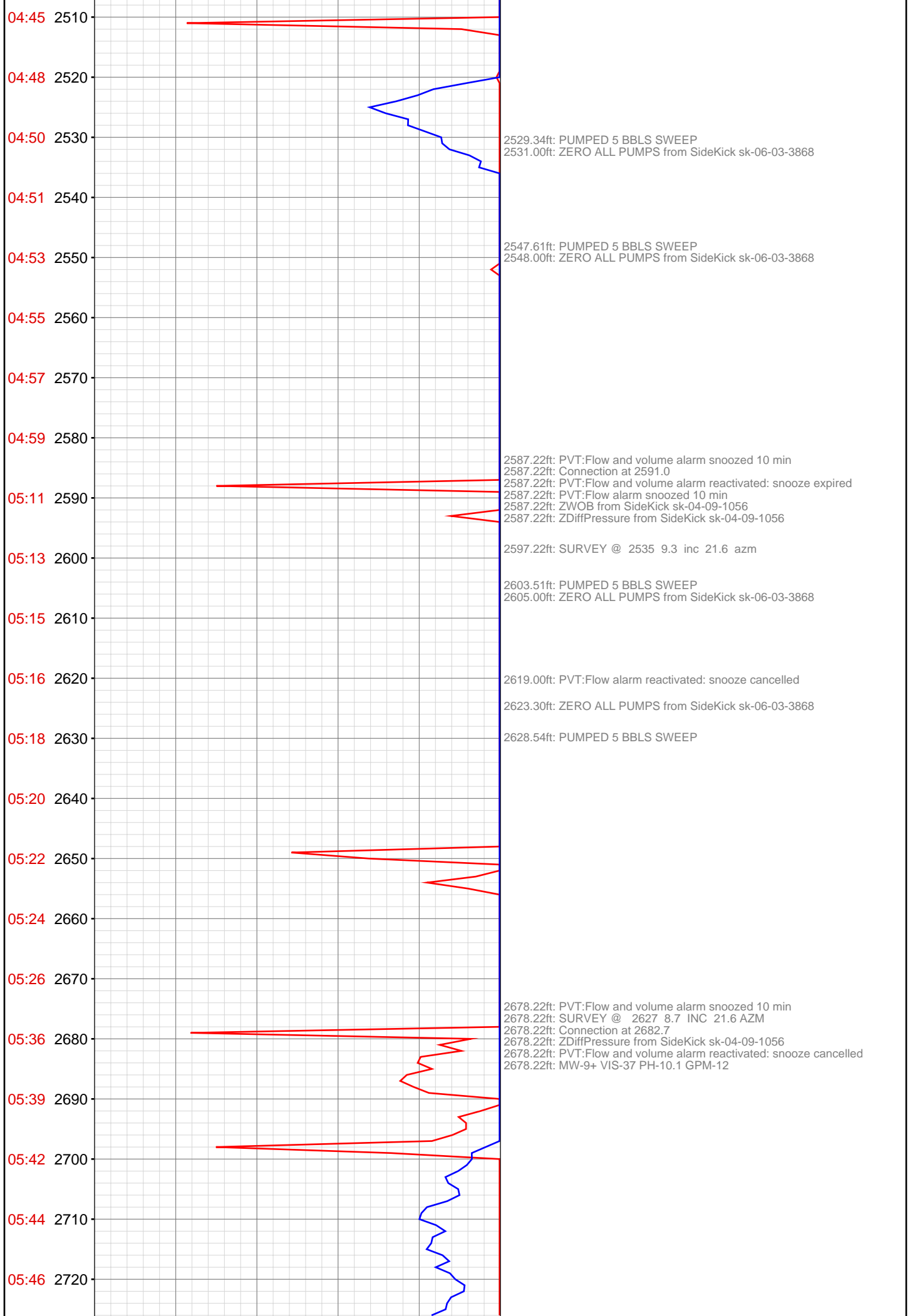


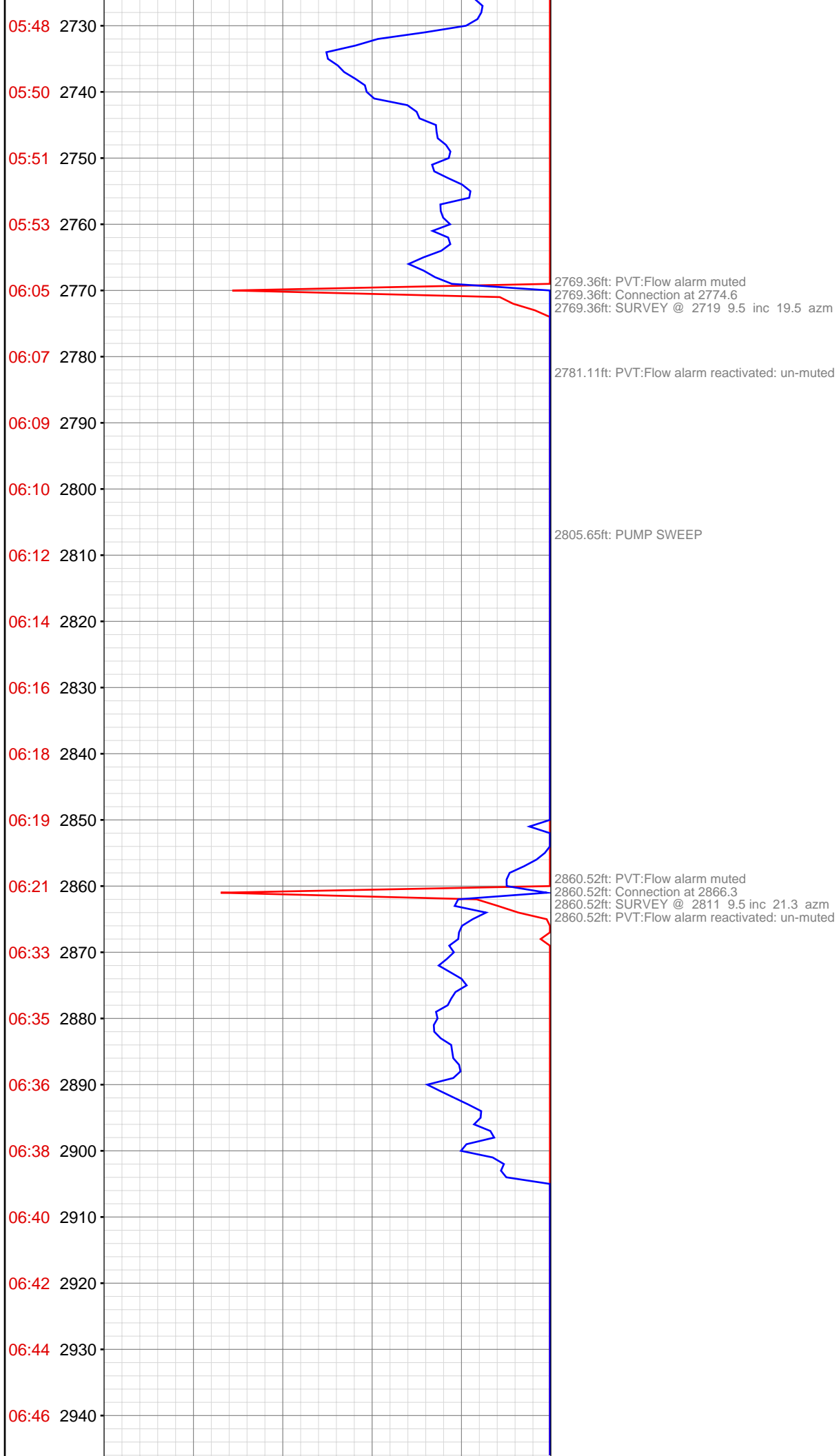


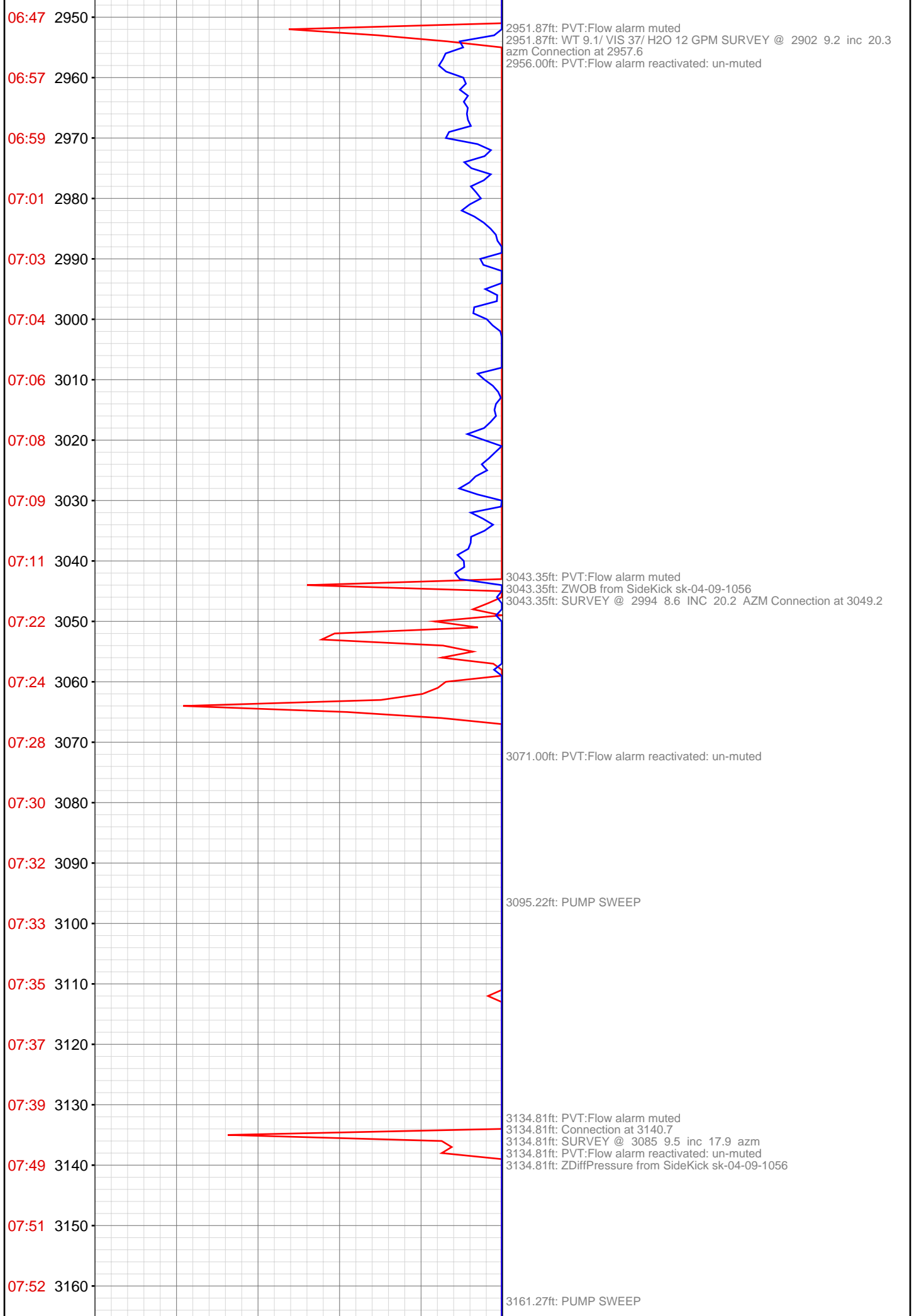












07:54 3170
07:55 3180
07:57 3190
07:59 3200
08:01 3210
08:02 3220
08:12 3230
08:14 3240
08:16 3250
08:17 3260
08:19 3270
08:21 3280
08:23 3290
08:25 3300
08:27 3310
08:37 3320
08:40 3330
08:42 3340
08:45 3350
08:46 3360
08:48 3370
08:51 3380

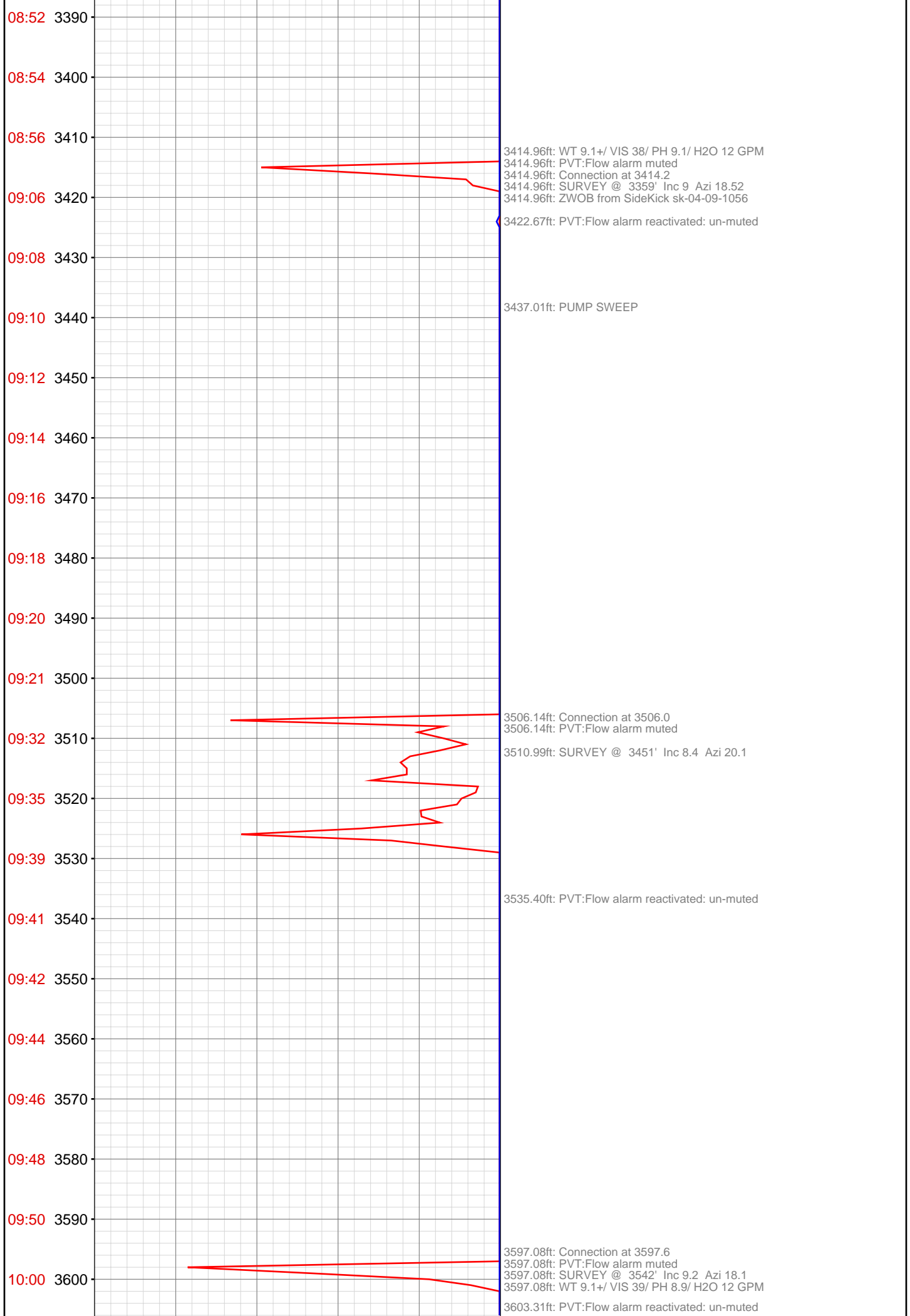
3167.50ft: WT 9.1+/- VIS 37/ H2O 12 GPM

3226.12ft: PVT:Flow alarm muted
3226.12ft: Connection at 3231.6
3226.12ft: PVT:Flow alarm reactivated: un-muted
3228.04ft: SURVEY @ 3176 8.8 inc 20.2 azm

3317.45ft: ZWOB from SideKick sk-04-09-1056
3317.45ft: PVT:Flow alarm muted
3317.45ft: SURVEY @ 3268 8.3 INC 21.9 AZM
3317.45ft: Connection at 3323.4
3317.45ft: IN TALLY: HOLE DEPTH SET TO 3323.4

3348.23ft: PVT:Flow alarm reactivated: un-muted

3355.51ft: PUMP SWEEP



10:02 3610
10:04 3620
10:06 3630
10:07 3640
10:09 3650
10:11 3660
10:12 3670
10:14 3680
10:24 3690
10:26 3700
10:28 3710
10:29 3720
10:31 3730
10:33 3740
10:35 3750
10:37 3760
10:39 3770
10:49 3780
10:51 3790
10:53 3800
10:55 3810
10:59 3820

3618.31ft: PUMP SWEEP

3688.45ft: PVT:Flow alarm muted
3688.45ft: Connection at 3688.7
3688.45ft: SURVEY @ 3633' Inc 9 Azi 17.2
3688.45ft: PVT:Flow alarm reactivated: un-muted

3780.02ft: PVT:Flow alarm muted
3780.02ft: ZWOB from SideKick sk-04-09-1056
3780.02ft: Connection at 3780.4
3780.02ft: SURVEY 3725' Inc 8.6 Azi 19.5

3798.03ft: PUMP SWEEP
3800.69ft: PVT:Flow alarm reactivated: un-muted

3815.09ft: WT 9.2/ VIS 38/ PH 9.0/ H2O 12 GPM

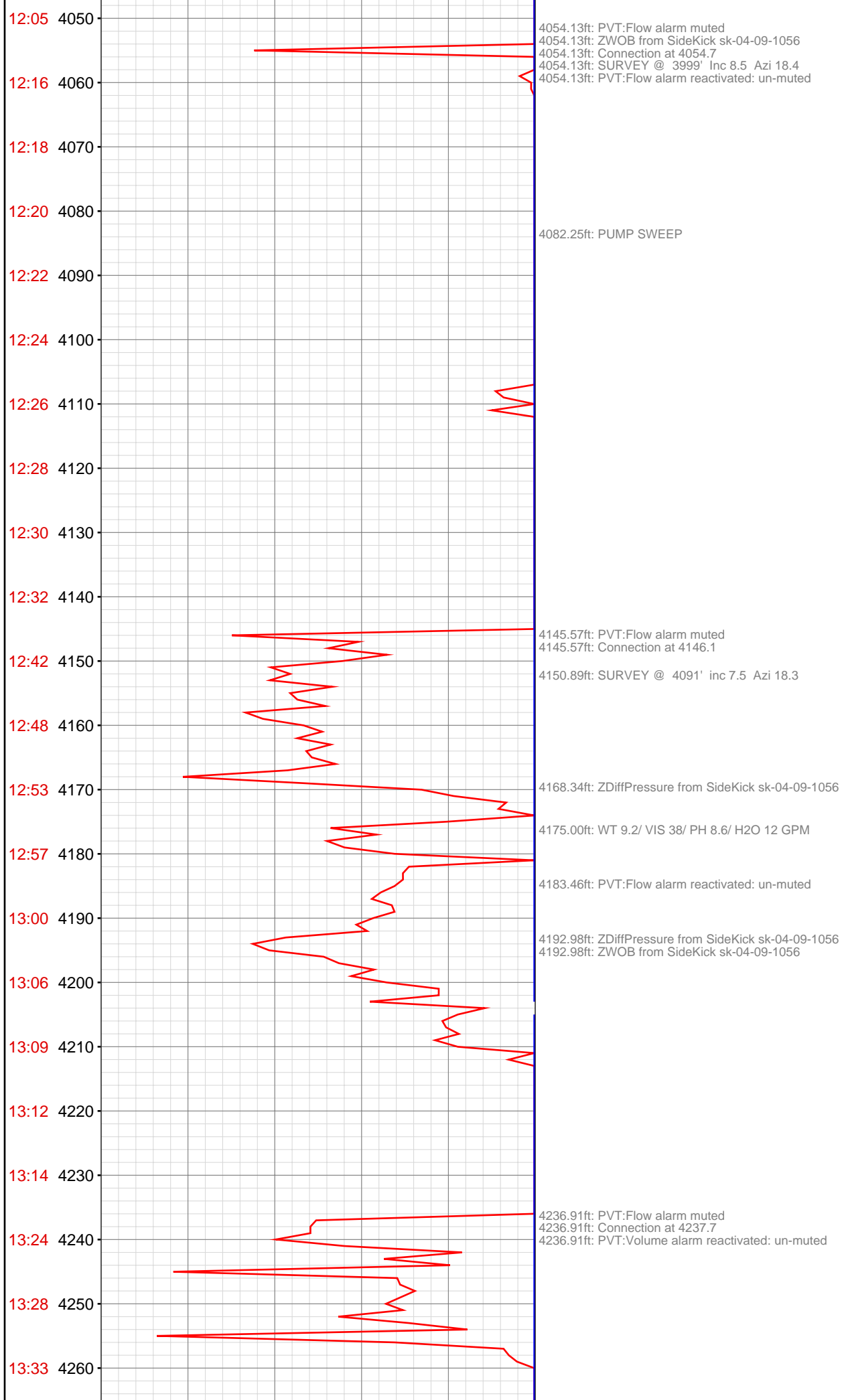
11:01 3830
11:02 3840
11:04 3850
11:06 3860
11:08 3870
11:21 3880
11:26 3890
11:28 3900
11:29 3910
11:31 3920
11:34 3930
11:36 3940
11:37 3950
11:39 3960
11:50 3970
11:53 3980
11:55 3990
11:56 4000
11:58 4010
12:00 4020
12:02 4030
12:04 4040

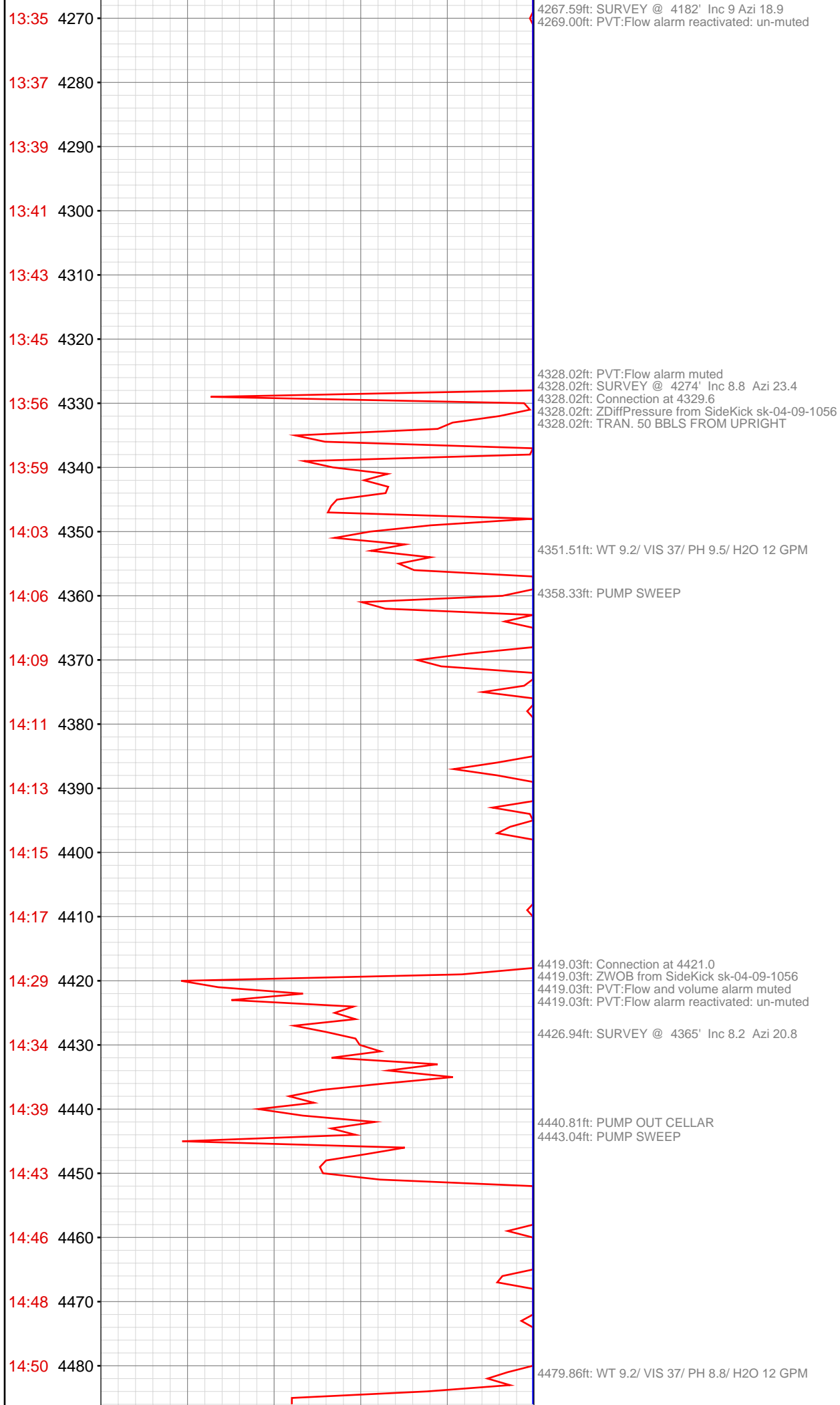
3871.19ft: PVT:Flow alarm muted
3871.19ft: Connection at 3871.7
3871.19ft: PVT:Flow alarm reactivated: un-muted

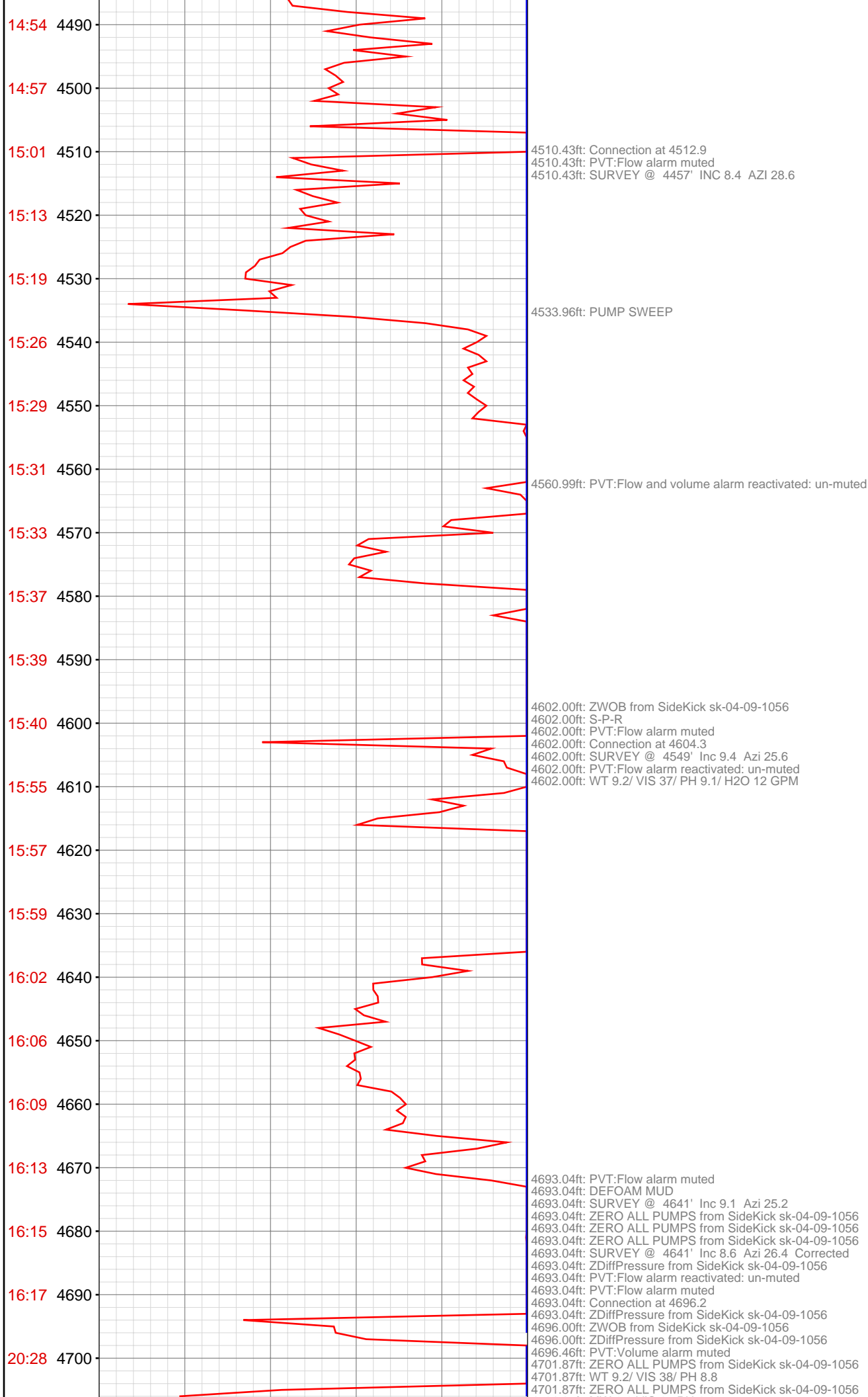
3899.28ft: SURVEY @ 3816' Inc 7.9 Azi 19.5

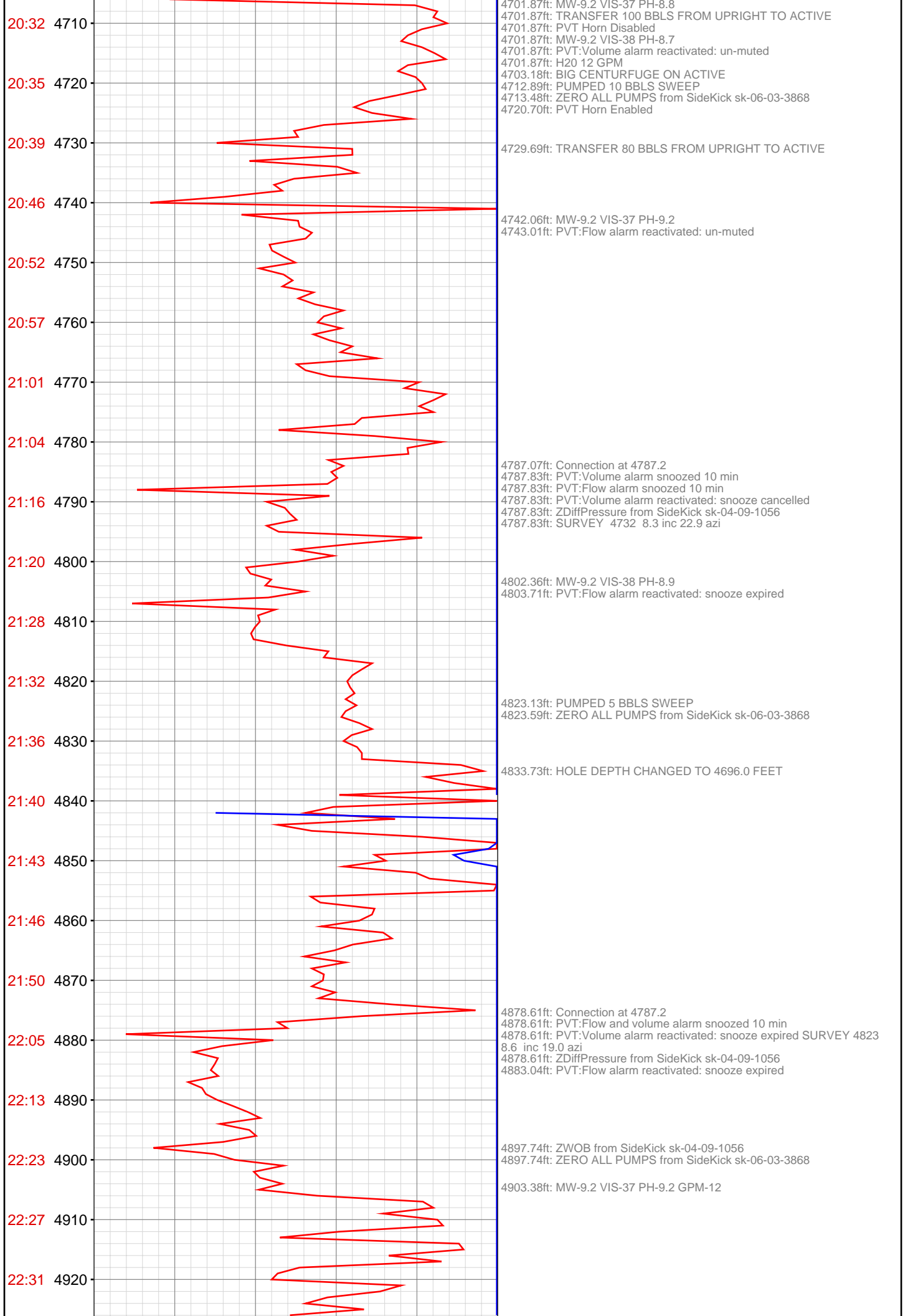
3962.89ft: PVT:Flow alarm muted
3962.89ft: Connection at 3963.3
3962.89ft: SURVEY @ 3908' Inc 8.8 Azi 16.9
3962.89ft: PVT:Flow alarm reactivated: un-muted

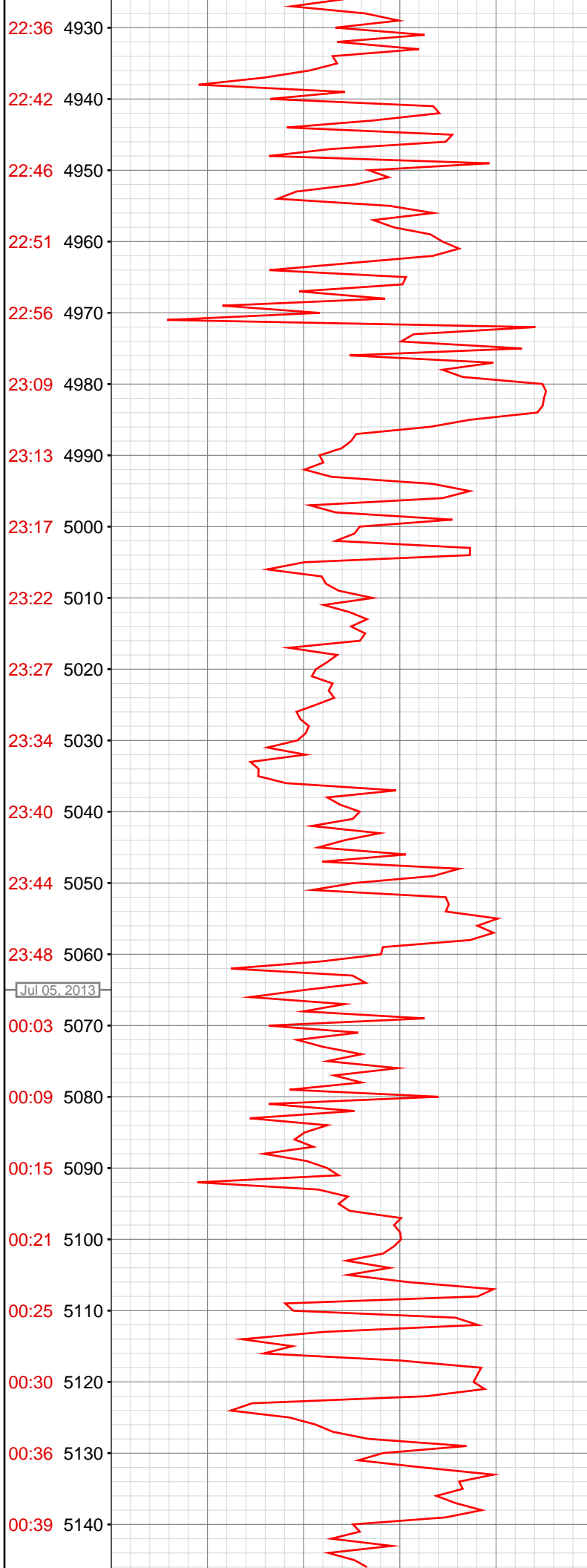
4024.44ft: WT 9.2/ VIS 39/ PH 8.8/ H2O 12 GPM











4970.14ft: Connection at 4970.1
4970.14ft: PVT:Flow alarm snoozed 10 min
4970.14ft: SURVEY 4915 9.4 inc 18.4 azi
4970.14ft: ZDiffPressure from SideKick sk-04-09-1056
4970.14ft: ZWOB from SideKick sk-04-09-1056
4972.74ft: PVT:Flow alarm reactivated: snooze cancelled
4975.46ft: ZERO ALL PUMPS from SideKick sk-06-03-3868
4976.05ft: PUMPED 5 BBLS SWEEP

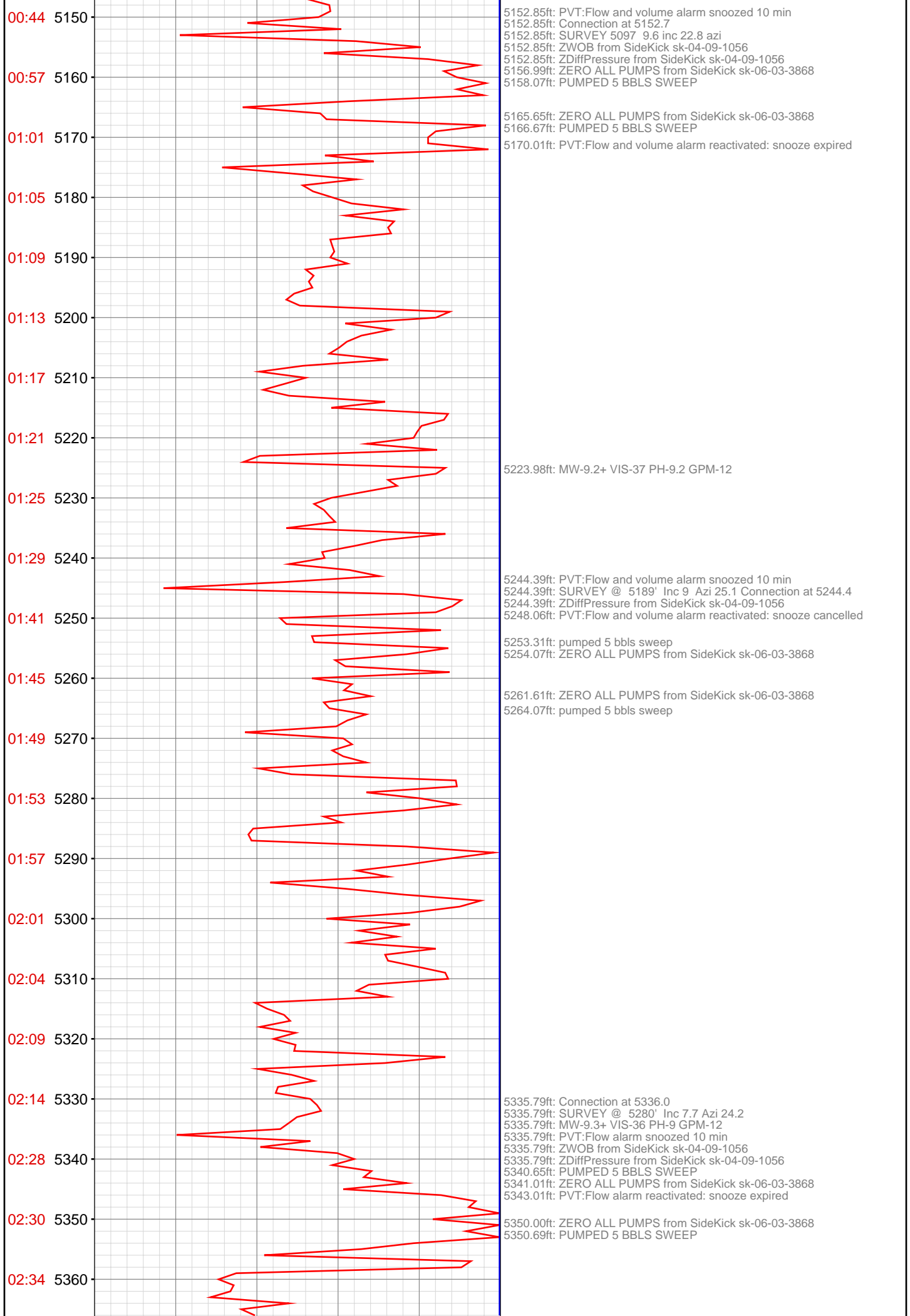
4984.15ft: ZERO ALL PUMPS from SideKick sk-06-03-3868
4986.06ft: PUMPED 5 BBLS SWEEP

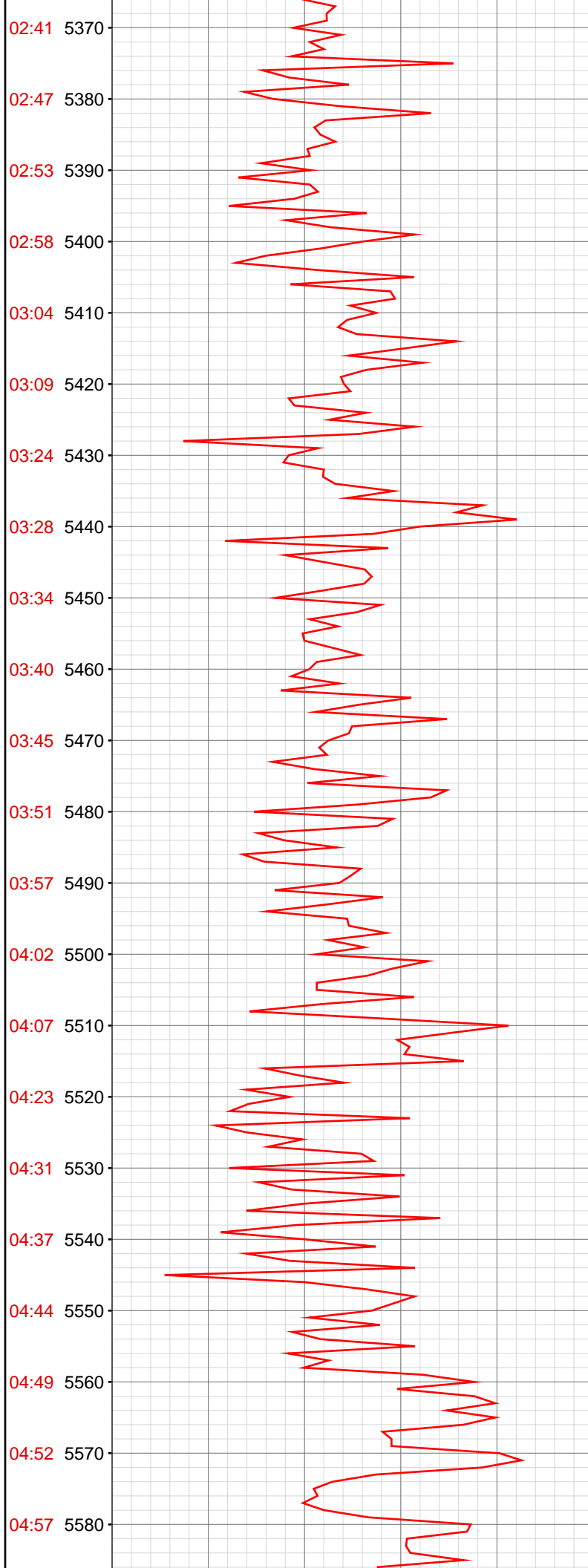
5008.69ft: MW-9.2 VIS-37 PH-9.1 GPM-12

5061.61ft: PVT:Flow and volume alarm snoozed 10 min
5061.61ft: Connection at 5061.3
5061.61ft: SURVEY 5006 8.8 inc 17.2 azi
5061.61ft: ZDiffPressure from SideKick sk-04-09-1056
5061.61ft: PVT:Flow alarm reactivated: snooze expired
5068.18ft: PVT:Volume alarm reactivated: snooze expired

5091.08ft: ZDiffPressure from SideKick sk-04-09-1056
5092.95ft: PUMPED 5 BBLS SWEEP
5093.01ft: ZERO ALL PUMPS from SideKick sk-06-03-3868

5118.54ft: MW-9.2+ VIS-37 PH-9 GPM-12





02:41 5370

02:47 5380

02:53 5390

02:58 5400

03:04 5410

03:09 5420

03:24 5430

03:28 5440

03:34 5450

03:40 5460

03:45 5470

03:51 5480

03:57 5490

04:02 5500

04:07 5510

04:23 5520

04:31 5530

04:37 5540

04:44 5550

04:49 5560

04:52 5570

04:57 5580

5427.49ft: Connection at 5427.6
5427.49ft: PVT:Flow alarm snoozed 10 min
5427.49ft: ZDiffPressure from SideKick sk-04-09-1056
5431.23ft: PVT:Flow alarm reactivated: snooze cancelled
5432.05ft: MW-9.4 VIS-36 PH-9.1 GPM-12 SURVEY @ 5372' Inc 6.9 Azi 24.5

5441.08ft: ZDiffPressure from SideKick sk-04-09-1056
5444.39ft: ZERO ALL PUMPS from SideKick sk-06-03-3868

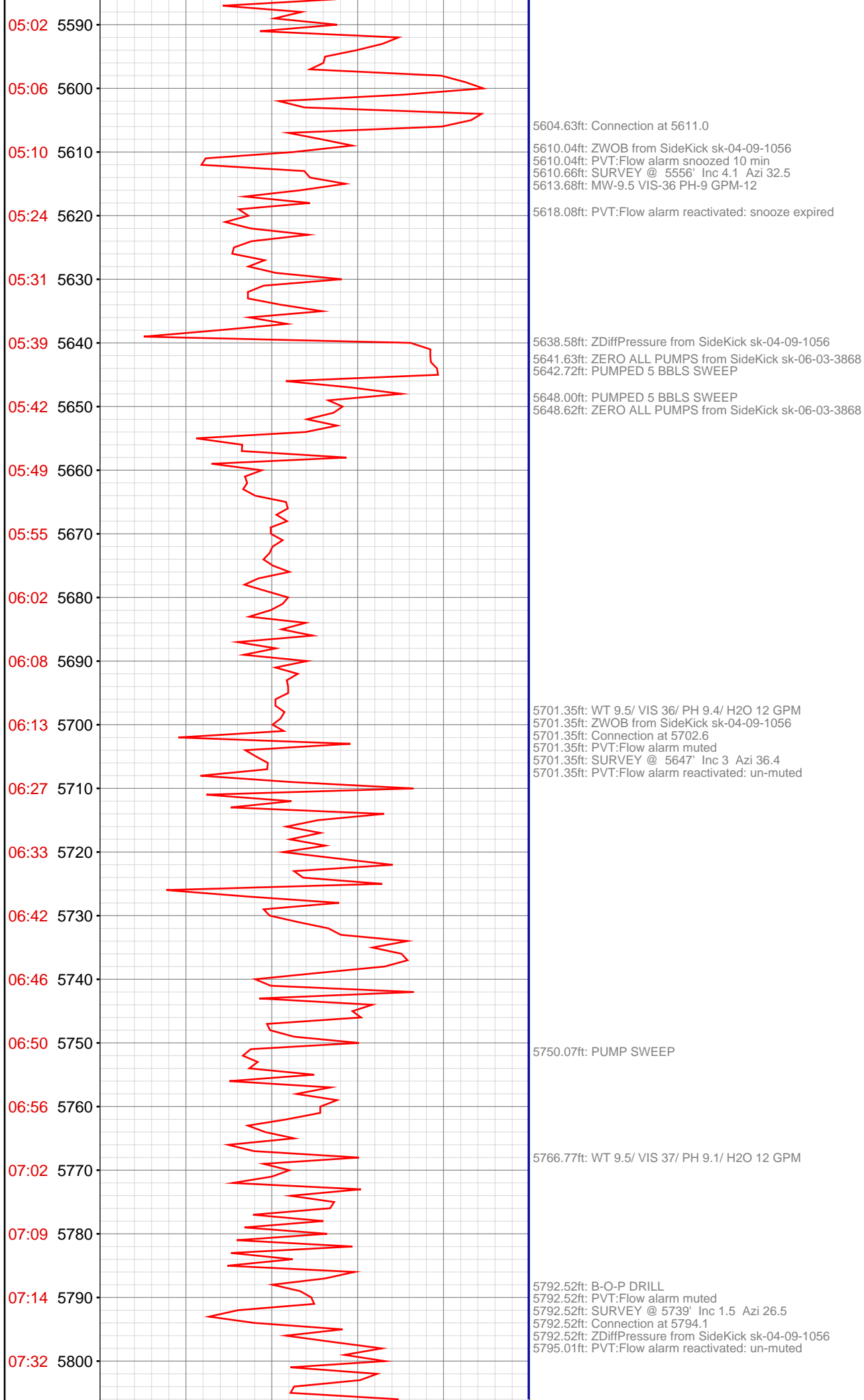
5475.16ft: ZERO ALL PUMPS from SideKick sk-06-03-3868
5476.90ft: PUMPED 5 BBLs SWEEP

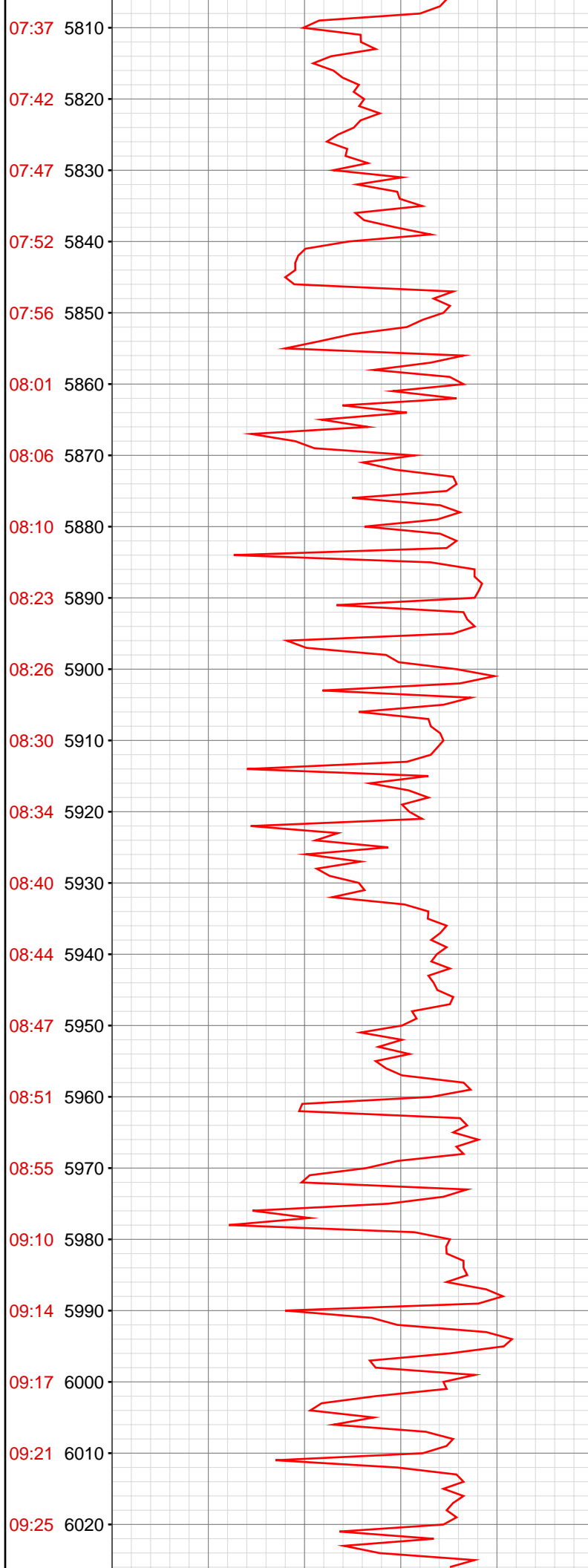
5505.32ft: GA - Manual purge

5518.70ft: PVT:Flow alarm muted
5518.70ft: Connection at 5519.5
5518.70ft: SURVEY 5464 5.8 inc 30.9 azi
5518.70ft: PVT:Flow alarm reactivated: un-muted

5535.11ft: MW-9.4+ VIS-36 PH-9 GPM-12

5544.59ft: ZDiffPressure from SideKick sk-04-09-1056
5545.01ft: PUMPED 5 BBLs SWEEP
5545.31ft: ZERO ALL PUMPS from SideKick sk-06-03-3868





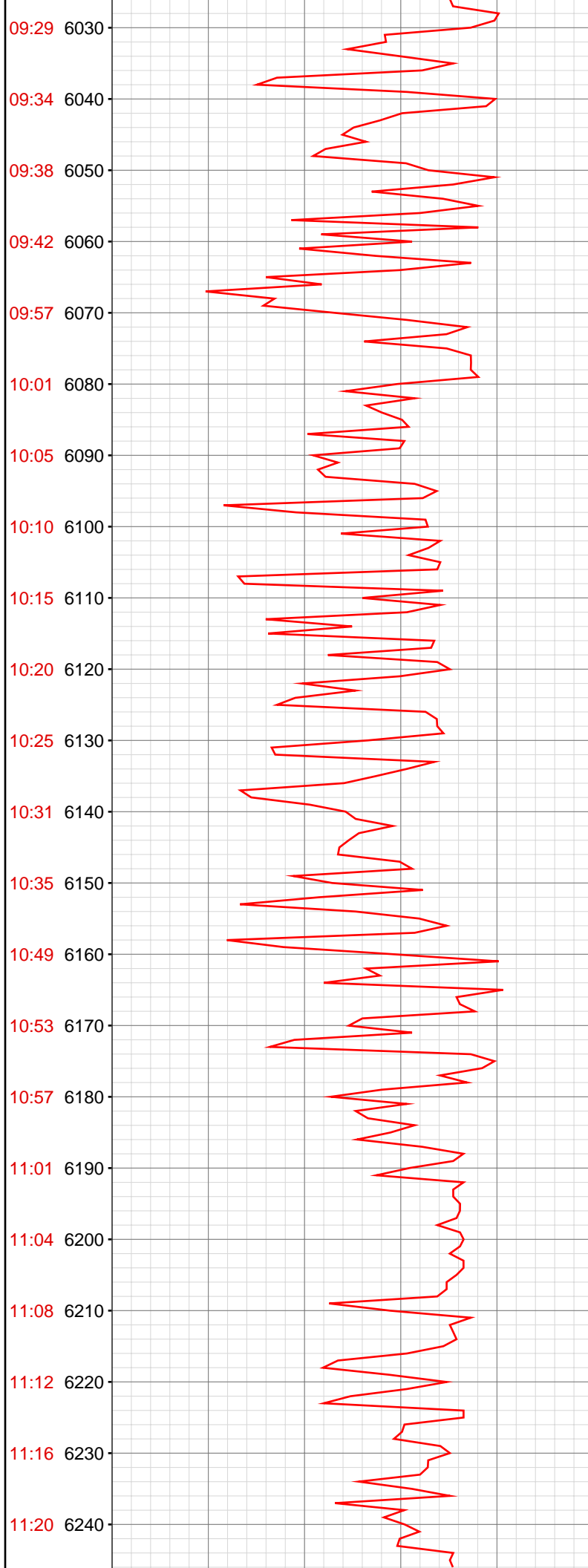
5840.75ft: PUMP SWEEP
5843.90ft: WT 9.5/ VIS 36/ PH 8.8/ H2O 12 GPM

5883.92ft: PVT:Flow alarm muted
5883.92ft: Connection at 5885.7
5883.92ft: SURVEY @ 5830 1.1 inc 37.8 azm
5883.92ft: ZDiffPressure from SideKick sk-04-09-1056
5883.92ft: PVT:Flow alarm reactivated: un-muted

5908.46ft: PUMP OUT TRIP TANK

5975.43ft: Connection at 5976.9
5975.43ft: PVT:Flow alarm muted
5975.43ft: SURVEY @ 5921 1.0 inc 39.9 azm
5975.43ft: H2O 10 GPM
5976.15ft: PVT:Flow alarm reactivated: un-muted
5979.33ft: WT 9.5/ VIS 37/ PH 9.1/ H2O 10 GPM

6023.10ft: H2O 8 GPM



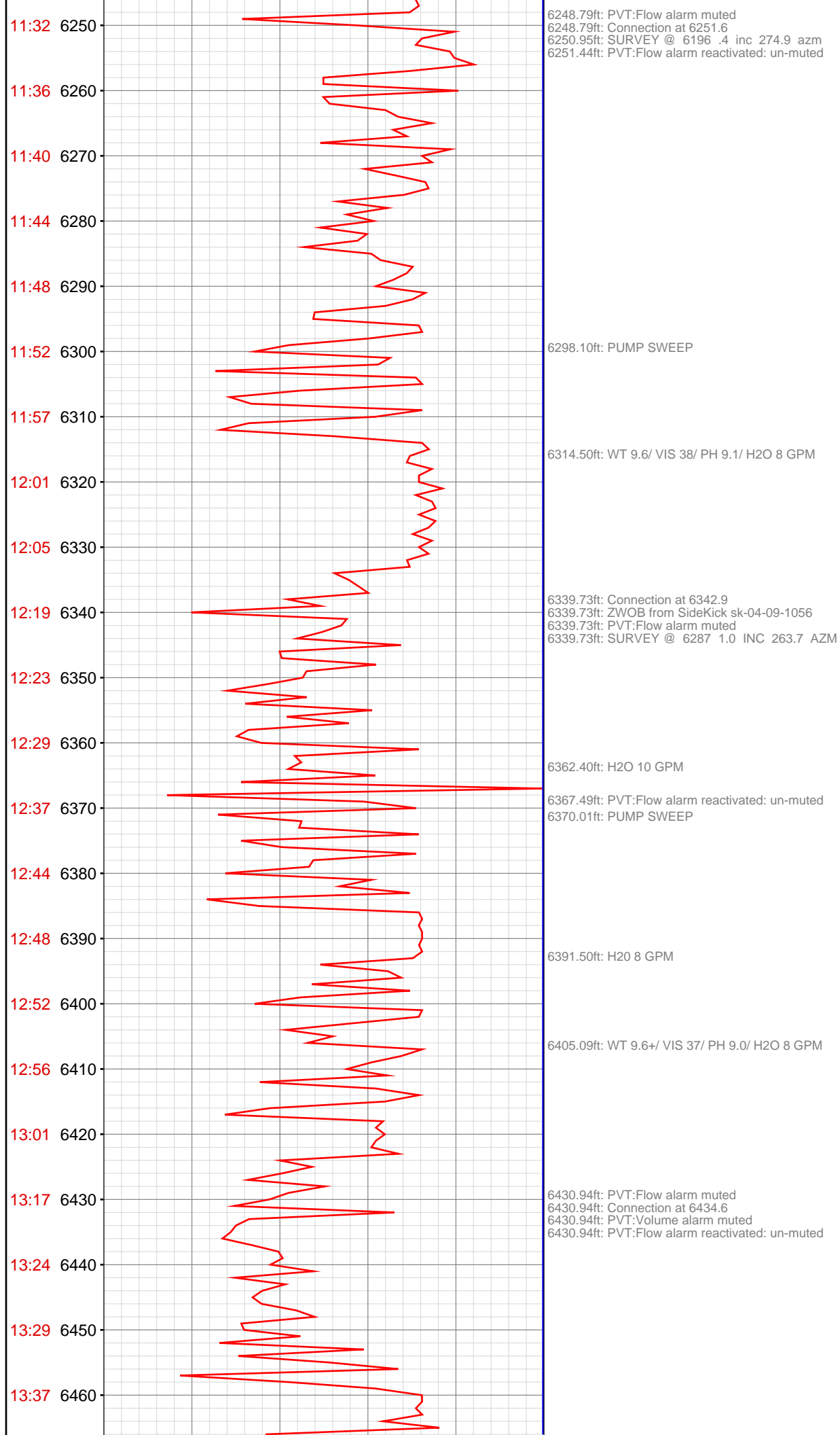
6066.63ft: ZWOB from SideKick sk-04-09-1056
6066.63ft: PVT:Flow alarm muted
6066.63ft: Connection at 6068.4
6066.63ft: SURVEY @ 6013 .5 inc 20.5 azm

6089.37ft: WT 9.5/ VIS 37/ PH 9.1/ H2O 8 GPM

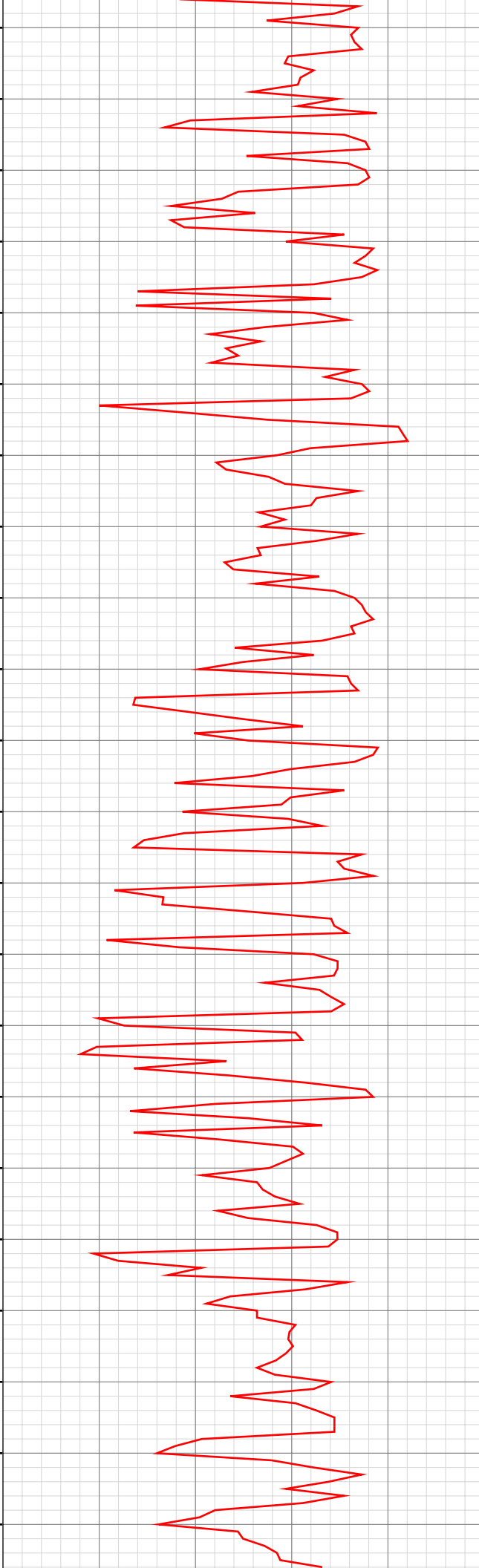
6112.50ft: PVT:Flow alarm reactivated: un-muted
6114.67ft: PUMP SWEEP

6157.91ft: PVT:Flow alarm muted
6157.91ft: Connection at 6159.9
6157.91ft: SURVEY @ 6104 .2 inc 357.6 azm
6157.91ft: PVT:Flow alarm reactivated: un-muted

6183.83ft: WT 9.5+/ VIS 38/ PH 9.2/ H2O 8 GPM
6186.09ft: PUMP SWEEP



13:41 6470
13:45 6480
13:49 6490
13:54 6500
13:58 6510
14:03 6520
14:17 6530
14:21 6540
14:24 6550
14:28 6560
14:34 6570
14:38 6580
16:12 6590
16:17 6600
16:22 6610
16:41 6620
16:47 6630
16:51 6640
16:57 6650
17:01 6660
17:05 6670
17:10 6680



6468.01ft: PVT:Volume alarm reactivated: un-muted

6522.08ft: ZWOB from SideKick sk-04-09-1056
6522.08ft: PVT:Flow alarm muted
6522.08ft: Connection at 6526.1
6522.08ft: ZDiffPressure from SideKick sk-04-09-1056
6522.08ft: WT 9.6+/ VIS 37/ PH 9.0/ H2O 8 GPM
6523.49ft: SURVEY @ 6471' Inc .3 Azi 218.9
6525.00ft: PVT:Flow alarm reactivated: un-muted

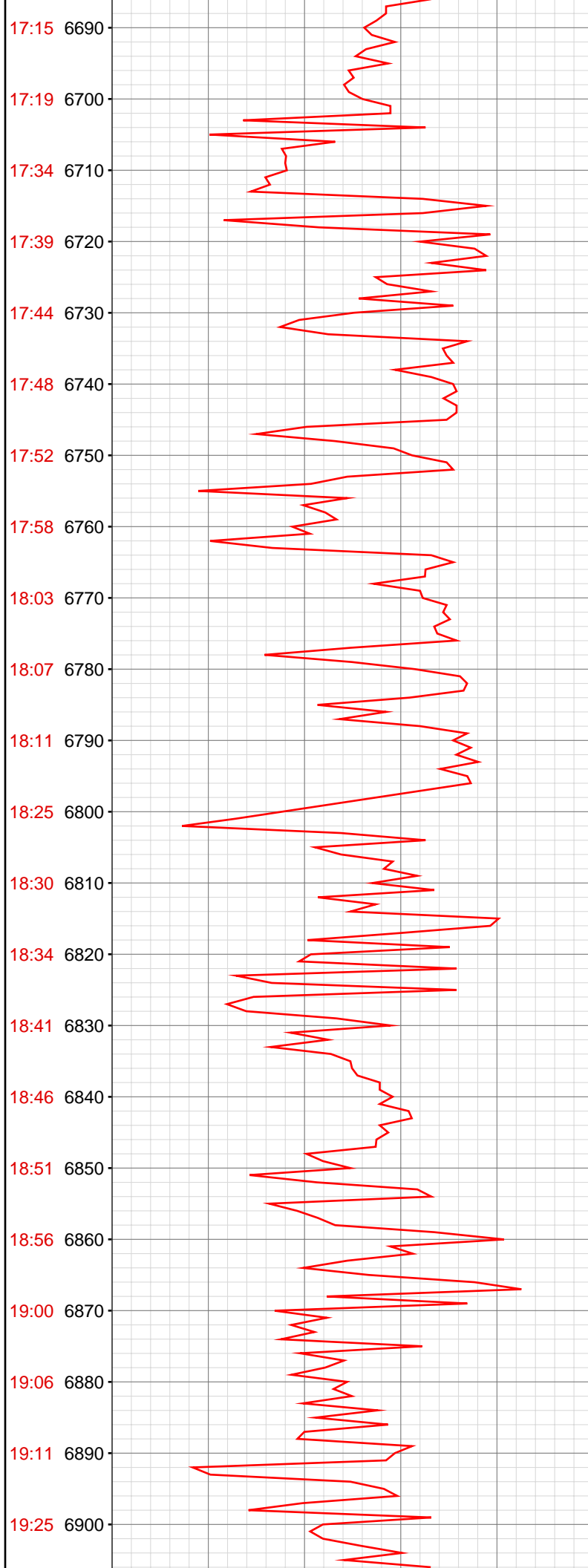
6590.32ft: PVT:Flow alarm muted
6590.32ft: ZERO ALL PUMPS from SideKick sk-04-09-1056
6590.32ft: PVT:Flow alarm reactivated: un-muted
6590.32ft: WT 9.6+/ VIS 36/ PH 9.0/ H2O 8 GPM
6590.32ft: ZWOB from SideKick sk-04-09-1056
6590.32ft: ZDiffPressure from SideKick sk-04-09-1056

6613.39ft: S-P-R
6613.39ft: PVT:Flow alarm muted
6613.39ft: Connection at 6617.6
6613.39ft: SURVEY @ 6562' Inc .9 Azi 246
6613.39ft: PVT:Flow alarm reactivated: un-muted

6626.18ft: PUMP SWEEP

6642.32ft: WT 9.7/ VIS 36/ PH 8.8/ H2O 8 GPM

6652.23ft: H2O 6 GPM



6704.92ft: Connection at 6708.9
6704.92ft: PVT:Flow alarm muted
6704.92ft: SURVEY @ 6653' Inc .7 Azi 290.3
6704.92ft: ZDiffPressure from SideKick sk-04-09-1056
6704.92ft: PVT:Flow alarm reactivated: un-muted

6786.52ft: MW-9.7 VIS-37 PH-9 GPM-6

6796.19ft: Connection at 6800.1
6796.19ft: SURVEY 6745 0.7 inc 298.5 azi
6796.19ft: PVT:Flow alarm snoozed 10 min
6796.19ft: ZDiffPressure from SideKick sk-04-09-1056
6796.19ft: ZWOB from SideKick sk-04-09-1056
6796.19ft: IN TALLY: HOLE DEPTH SET TO 6800.1
6800.13ft: PVT:Flow alarm reactivated: snooze cancelled

6807.41ft: ZERO ALL PUMPS from SideKick sk-06-03-3868

6883.10ft: MW-9.7+ VIS-38 PH-9.6 GPM-6

6891.21ft: Connection at 6891.7
6891.21ft: SURVEY 6836 1.0 inc 287.0 azi
6891.21ft: PVT:Flow alarm snoozed 10 min
6891.21ft: ZDiffPressure from SideKick sk-04-09-1056
6891.21ft: ZWOB from SideKick sk-04-09-1056

6903.22ft: PUMPED 5 BBLS SWEEP
6904.10ft: ZERO ALL PUMPS from SideKick sk-06-03-3868

6904.43ft: PVT:Flow alarm reactivated: snooze expired
6908.56ft: PUMPED 5 BBLS SWEEP
6908.76ft: ZERO ALL PUMPS from SideKick sk-06-03-3868

6969.78ft: MW-9.8+ VIS-38 PH-9.5 GPM-6

6982.64ft: Connection at 6982.8
6982.64ft: PVT:Flow alarm snoozed 10 min
6982.64ft: ZDiffPressure from SideKick sk-04-09-1056
6982.64ft: SURVEY 6927 1.2 inc 263.0 azi
6982.64ft: ZDiffPressure from SideKick sk-04-09-1056
6982.64ft: ZWOB from SideKick sk-04-09-1056

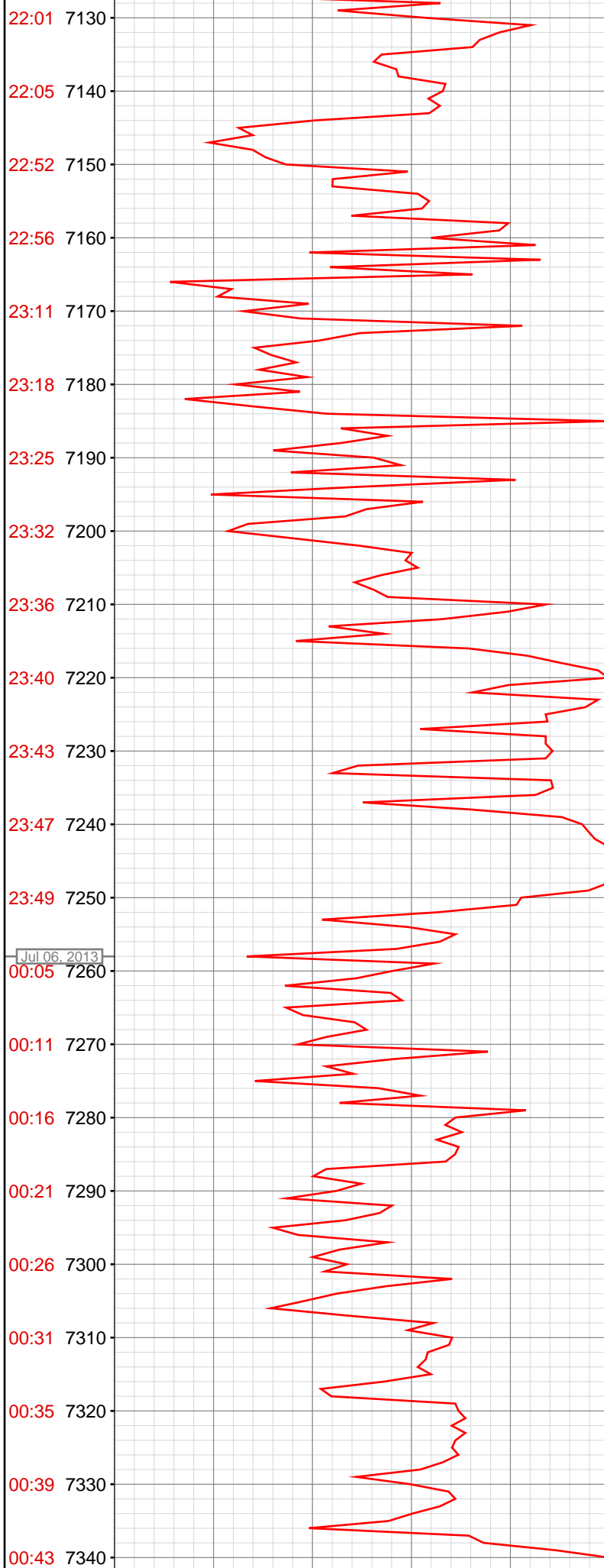
6997.74ft: PVT:Flow alarm reactivated: snooze expired

7017.68ft: PUMPED 5 BBLS SWEEP
7018.67ft: ZERO ALL PUMPS from SideKick sk-06-03-3868

7073.98ft: MW-9.9+ VIS-37 PH-9.3 GPM-6
7073.98ft: Connection at 7074.6
7073.98ft: SURVEY 7019 1.9 inc 262.4 azi
7073.98ft: PVT:Flow alarm snoozed 10 min
7073.98ft: ZDiffPressure from SideKick sk-04-09-1056

7083.17ft: PVT:Flow alarm reactivated: snooze expired
7083.17ft: PVT:Flow alarm snoozed 10 min

7094.36ft: PVT:Flow alarm reactivated: snooze expired



7132.38ft: ZERO ALL PUMPS from SideKick sk-06-03-3868

7146.88ft: PVT:Flow alarm snoozed 10 min
7146.88ft: ZDiffPressure from SideKick sk-04-09-1056
7148.00ft: PVT:Flow alarm reactivated: snooze cancelled
7149.90ft: PVT:Flow alarm snoozed 10 min
7149.90ft: MW-9.9+ VIS-36 PH-9.1 GPM-6
7149.90ft: PVT:Flow alarm reactivated: un-muted
7149.90ft: PVT:Flow alarm muted
7149.90ft: ZDiffPressure from SideKick sk-04-09-1056

7165.78ft: Connection at 7166.3
7166.14ft: MW-9.9+ VIS-36 PH-9 GPM-6
7167.68ft: PVT:Flow alarm reactivated: un-muted
7167.91ft: SURVEY 7111 1.0 inc 252.0 azi

7194.95ft: ZDiffPressure from SideKick sk-04-09-1056

7198.72ft: ZERO ALL PUMPS from SideKick sk-06-03-3868
7201.51ft: PVT:Flow alarm snoozed 10 min

7208.07ft: PVT:Flow alarm reactivated: snooze cancelled

7257.45ft: Connection at 7257.6
7257.45ft: SURVEY 7202 .9 inc 213.5 azi
7257.45ft: PVT:Flow alarm snoozed 10 min
7257.45ft: PVT:Flow alarm muted
7257.45ft: ZDiffPressure from SideKick sk-04-09-1056

7274.08ft: ZDiffPressure from SideKick sk-04-09-1056

7279.99ft: ZERO ALL PUMPS from SideKick sk-06-03-3868

7286.71ft: SENT 5BBLs SWEEP

7348.26ft: ZERO ALL PUMPS from SideKick sk-04-09-1056

