

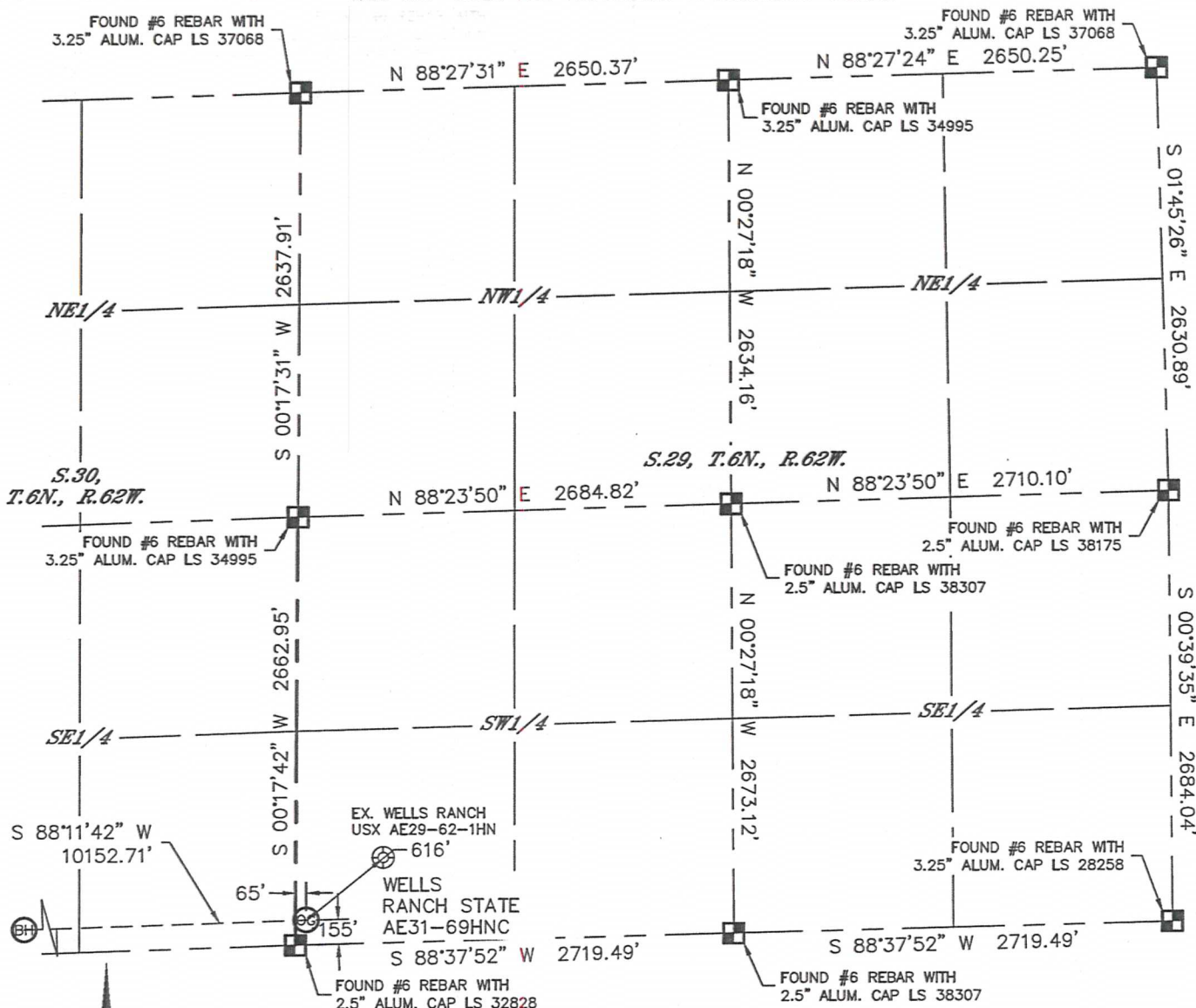


Lat40°, Inc. 1635 Foxtrail Drive, Suite 325 Loveland, CO 970-776-3321

WELL LOCATION CERTIFICATE

SECTION: 29
TOWNSHIP: 6N
RANGE: 62W

THIS MAP DOES NOT REPRESENT A BOUNDARY SURVEY



In accordance with a request from Preston Foster with Noble Energy Inc. Lat40°, Inc. has determined the surface location of the WELLS RANCH STATE AE31-69HNC to be 155' from the SOUTH line and 65' from the WEST line as measured at right angles from the section lines of Section 29, Township 6 North, Range 62 West and the bottom hole to be 60' from the SOUTH line and 535' from the WEST line as measured at right angles from the section lines of Section 25, Township 6 North, Range 63 West of the Sixth Principal Meridian, County of Weld, State of Colorado.

I hereby state that this Well Location Certificate was prepared by me, or under my direct supervision, that the fieldwork was completed on 8/1/2013, for and on behalf of Noble Energy Inc. That this is not a Land Survey Plat or an Improvement Survey Plat, and that it is not to be relied upon for establishment of fence, building, or other future improvement lines.

NOTE:

- Bearings shown are Grid Bearings of the Colorado State Plane Coordinate System, North Zone, North American Datum 1983/2007. The lined dimensions as contained herein are based upon the "U.S. Survey Foot."
 - Ground elevations are based on an observed GPS elevation (NAVD 1988 DATUM).
 - IMPROVEMENTS: See LOCATION DRAWING for all visible improvements within 500' of disturbed area.
 - SURFACE USE: RANGELAND
 - INSTRUMENT OPERATOR: ADAM KELLY
 - NEAREST EXISTING WELL: WELLS RANCH USX AE29-62-1HN, 616'
- NEAREST CULTURAL ITEMS:
BUILDING: 650' NE
BUILDING UNIT: 5280'+
HIGH OCCUPANCY BUILDING UNIT: 5280'+
DESIGNATED OUTSIDE ACTIVITY AREA: 5280'+
PUBLIC ROAD: 5280'+
ABOVEGROUND UTILITY: 5280'+
RAILROAD: 5280'+
PROPERTY LINE: 65' W

SURFACE LOCATION

LAT: 40.45084°N
LONG: 104.35628°W
PDOP: 1.5
ELEV: 4745'
1/4, 1/4: SW1/4SW1/4

BOTTOM HOLE

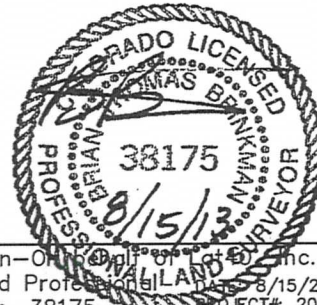
LAT: 40.45031°N
LONG: 104.39275°W

LEGEND

- = ALIQUOT MONUMENT AS DESCRIBED
○ = CALCULATED POSITION

SHEET 1 OF 3

Brian T. Brinkman - On behalf of Lat40°, Inc.
Colorado Licensed Professional Land Surveyor No. 38175
8/15/2013
PROJECT#: 2013028



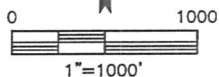
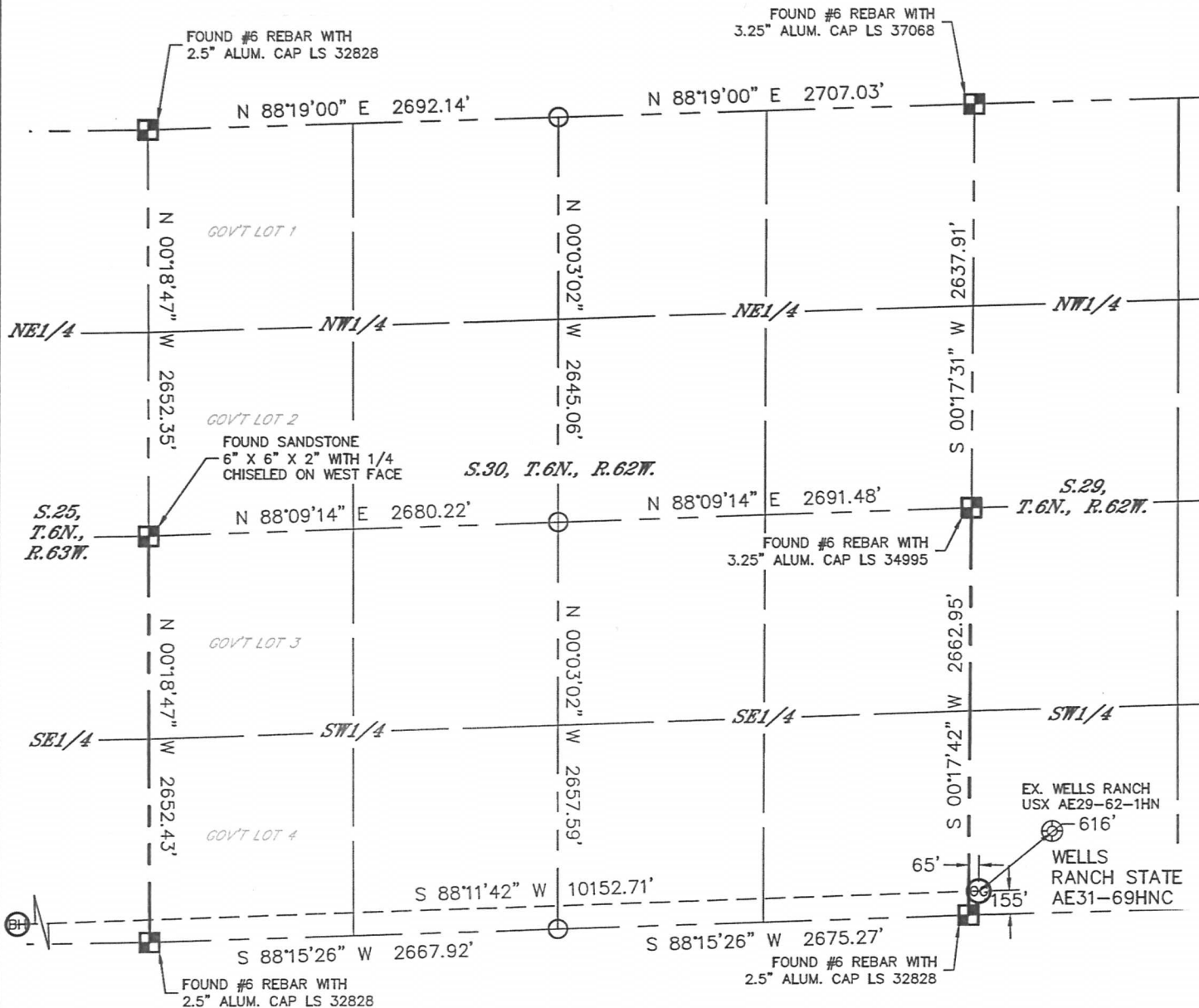


Lat40°, Inc. 1635 Foxtrail Drive, Suite 325 Loveland, CO 970-776-3321

WELL LOCATION CERTIFICATE

THIS MAP DOES NOT REPRESENT A BOUNDARY SURVEY

SECTION: 29
TOWNSHIP: 6N
RANGE: 62W



LEGEND

- = ALIQUOT MONUMENT AS DESCRIBED
- = CALCULATED POSITION

SHEET 2 OF 3

Brian T. Brinkman—On behalf of Lat40°, Inc.
Colorado Licensed Professional Land Surveyor
Land Surveyor No. 38175 PROJECT# 2013028



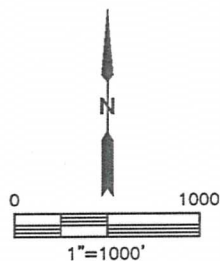
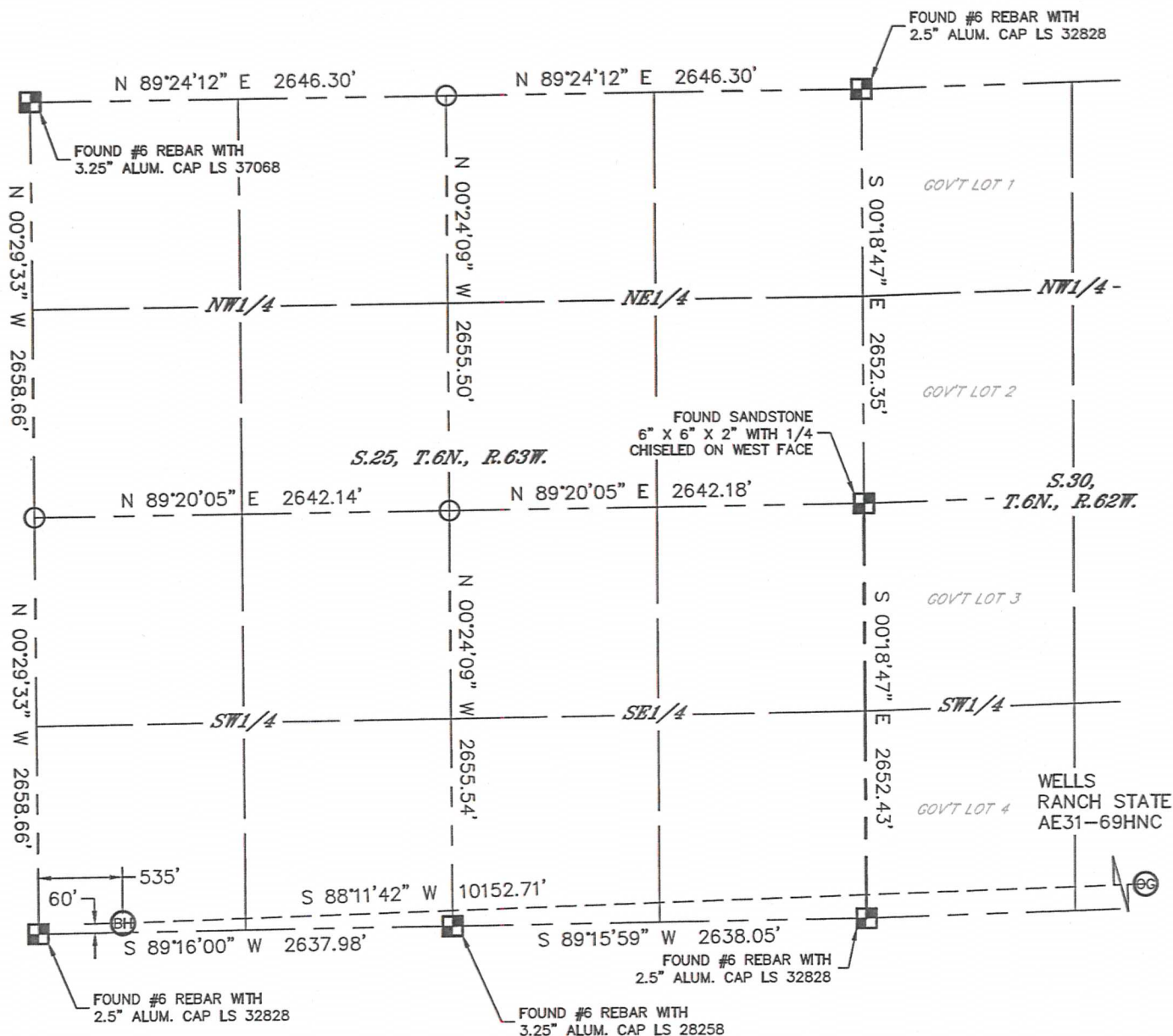


Lat40°, Inc. 1635 Foxtrail Drive, Suite 325 Loveland, CO 970-776-3321

WELL LOCATION CERTIFICATE

THIS MAP DOES NOT REPRESENT A BOUNDARY SURVEY

SECTION: 29
TOWNSHIP: 6N
RANGE: 62W

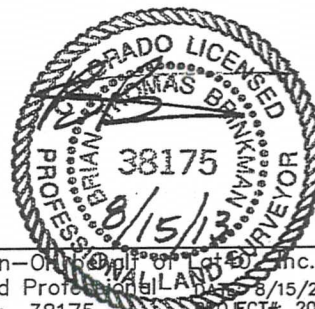


LEGEND

- = ALIQUOT MONUMENT AS DESCRIBED
- = CALCULATED POSITION

SHEET 3 OF 3

Brian T. Brinkman—On behalf of Lat40°, Inc.
Colorado Licensed Professional Land Surveyor
Land Surveyor No. 38175 PROJECT#: 2013028



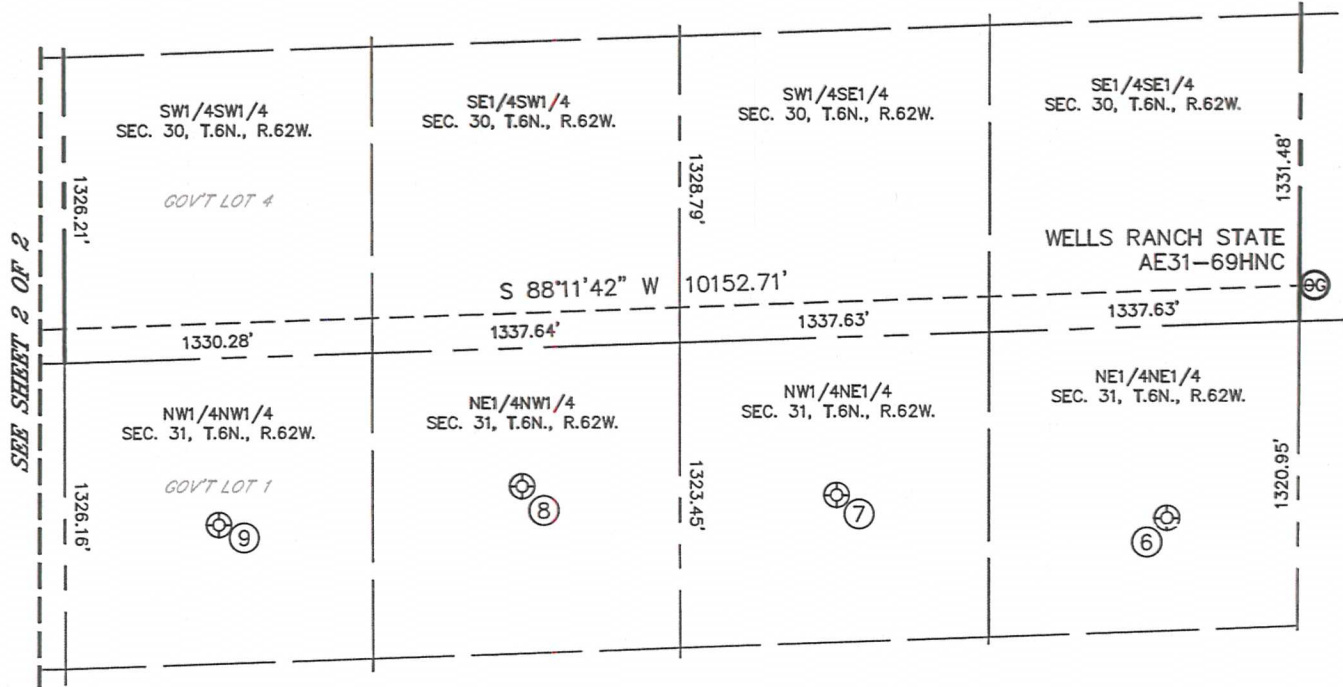


Lat40°, Inc. 1635 Foxtrail Drive, Suite 325 Loveland, CO 970-776-3321

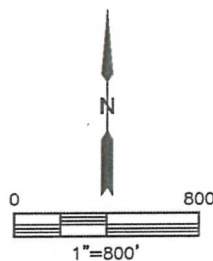
SITE SKETCH

WELLS RANCH STATE AE31-69HNC

SECTION: 29
TOWNSHIP: 6N
RANGE: 62W



WELL NO.	WELL NAME	SHL FOOTAGE				SHL LAT°	SHL LONG°	PDOP	ELEV (FT.)	1/4/1/4
6	WELLS RANCH USX AE 31-01P	831	FNL	567	FEL	40.44810	-104.35862	2.1	4727	NENE
7	WELLS RANCH USX AE 31-02P	683	FNL	1992	FEL	40.44844	-104.36373	2.2	4714	NWNE
8	WELLS RANCH USX AE 31-03P	597	FNL	1983	FWL	40.44861	-104.36861	2.2	4706	NENW
9	WELLS RANCH USX AE 31-04	721	FNL	665	FWL	40.44821	-104.37335	1.9	4697	NWNW



SHEET 1 OF 2

DATE: 8/14/2013
PROJECT#: 2013028

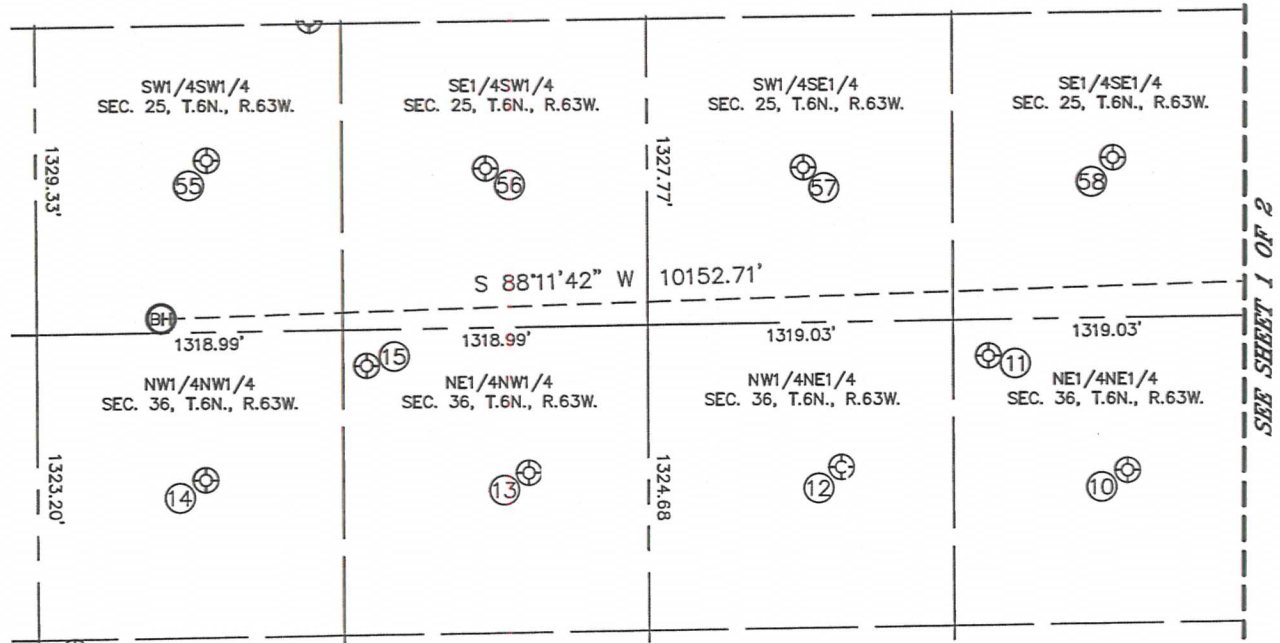


Lat40°, Inc. 1635 Foxtrail Drive, Suite 325 Loveland, CO 970-776-3321

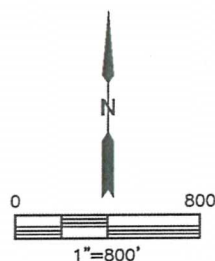
SITE SKETCH

WELLS RANCH STATE AE31-69HNC

SECTION: 29
TOWNSHIP: 6N
RANGE: 62W



WELL NO.	WELL NAME	SHL FOOTAGE				SHL LAT°	SHL LONG°	PDOP	ELEV (FT.)	1/4/1/4
10	WELLS RANCH 41-36	664	FNL	570	FEL	40.44833	-104.37778	1.8	4698	NENE
11	WELLS RANCH 36R	157	FNL	1168	FEL	40.44972	-104.37992	1.7	4708	NENE
12	WELLS RANCH 31-36	632	FNL	1803	FEL	40.44842	-104.38221	1.8	4716	NWNE
13	WELLS RANCH 21-36	634	FNL	2120	FWL	40.44841	-104.38707	1.6	4737	NENW
14	WELLS RANCH 11-36	642	FNL	724	FWL	40.44839	-104.39208	1.5	4795	NWNW
15	WELLS RANCH 36J	157	FNL	1420	FWL	40.44972	-104.38957	1.5	4765	NENW
55	WELLS RANCH USX AA 25-13	743	FSL	736	FWL	40.45219	-104.39202	1.9	4776	SWSW
56	WELLS RANCH USX AA 25-14	689	FSL	1940	FWL	40.45204	-104.38769	2.0	4757	SESW
57	WELLS RANCH USX AA 25-15	671	FSL	1963	FEL	40.45199	-104.38275	2.3	4720	SWSE
58	WELLS RANCH USX AA 25-16	692	FSL	629	FEL	40.45205	-104.37796	2.5	4707	SESE



SHEET 2 OF 2

DATE: 8/14/2013
PROJECT#: 2013028