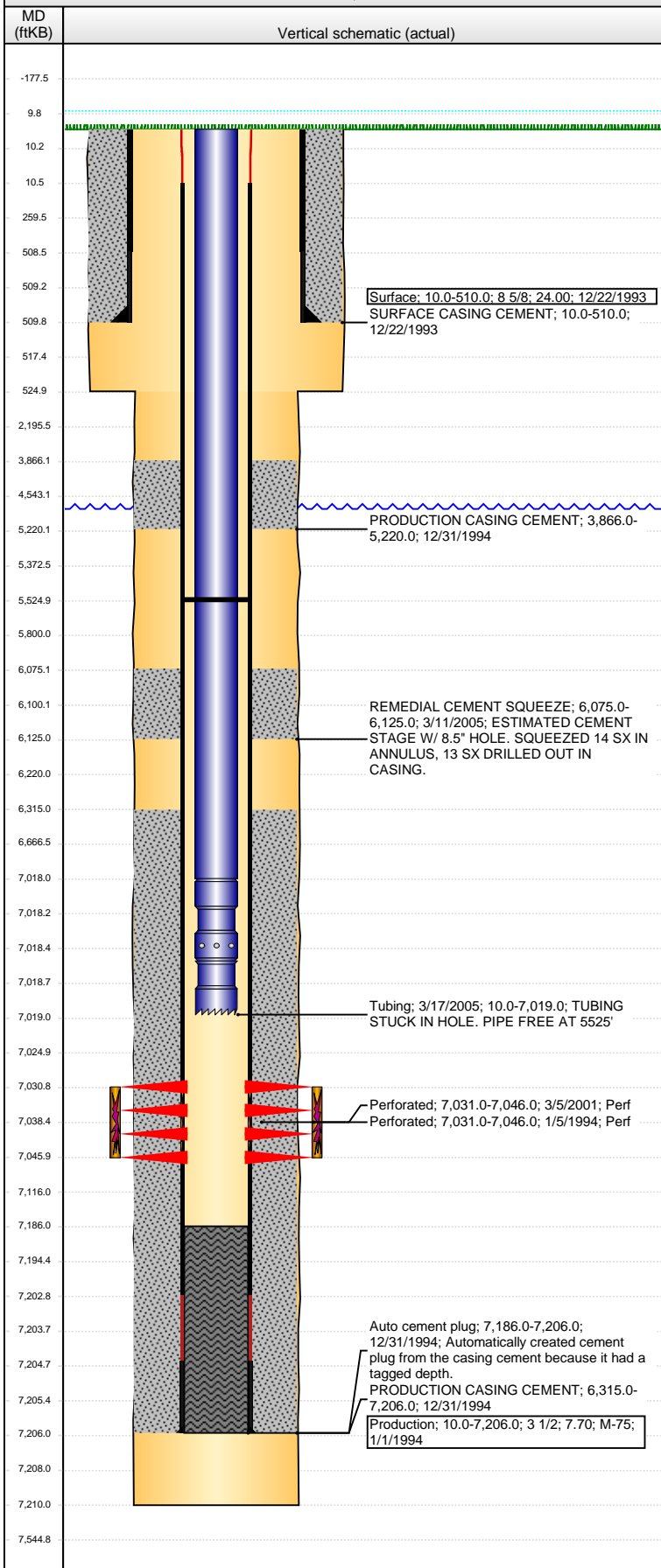


Well Name: RITER C18-10

VERTICAL - ORIGINAL HOLE, 10/22/2013 10:03:20 AM



Well Header

API	Business Unit	District	Well Config
05-123-17513	WATTENBERG	15	VERTICAL
Original KB Elevation (ft)	KB - GL / MSL (ftKB)	Spud Date	P & A Date
4,815.00	10.00	12/21/1993	

Comment

TUBING IS STUCK @ 5525' (FREE POINT FOUND FROM WIRELINE), WELL WAS MOST LIKELY FRAC'D INTO

Directions To Well

WCR 44 AND WCR 51 NORTH 3/10 THEN EAST 2/10 INTO

Congressional Location

Quarter 1	Quarter 2	Quarter 3	Quarter 4	Section	Township	Twnshp N...	Range	Rng E/W Dir
		NW	SE	18	4	N	64	W

Bottom Hole Location

North-South Distance (ft)	From N or S Line	East-West Distance (ft)	From E or W Line

Plug Back Total Depths

Date	Depth (ftKB)	Method	Com
1/5/1994	7,186.0	CASED HOLE LOG	CBL DEPTH LOGGER
1/5/1994	7,203.0	CASING TALLY	TOP OF FLOAT COLLAR
3/13/2012	5,525.0	TAG	FREE POINT FROM WIRELINE

Wellbore Sections

Section Des	Size (in)	Act Top (ftKB)	Act Btm (ftKB)
SURFACE	12 1/4	10.0	525.0
PRODUCTION	7 7/8	525.0	7,210.0

Zone Statuses

Zone Name	Status Date	Status	Job
CODL	1/18/1994	PR	DRILLING/COMPLETION - ORIGINAL, 12/21/1993 00:00
CODL	3/14/2001	PR	RE-FRAC, 3/2/2001 00:00

Casing Strings

Surface, 510.0ftKB

Casing Description	Run Date	OD (in)	Wt/Len (l...)	Grade	Top (ftKB)	MD (ftKB)
Surface	12/22/1993	8 5/8	24.00		10.0	510.0

Production, 7,206.0ftKB

Casing Description	Run Date	OD (in)	Wt/Len (l...)	Grade	Top (ftKB)	MD (ftKB)
Production	1/1/1994	3 1/2	7.70	M-75	10.0	7,206.0

Cement

Description	Top Depth (ftKB)	Bottom Depth (ftKB)
SURFACE CASING CEMENT	10.0	510.0
PRODUCTION CASING CEMENT	3,866.0	5,220.0
PRODUCTION CASING CEMENT	6,315.0	7,206.0
REMEDIAL CEMENT SQUEEZE	6,075.0	6,125.0

Tubing Components

Item Des	OD (in)	Wt (lb/ft)	Grade	Jts	Len (ft)	Btm (ftKB)	Btm (TVD) (ftKB)
Tubing	2 1/16	3.25	J-55	212	7,008.00	7,018.0	
Seal Nipple	2 1/16			1	0.50	7,018.5	
Notched collar	2 1/16			1	0.50	7,019.0	

Perforation Data

Zone	Bnch/St g	Entered Shot Total	Top (ftKB)	Btm (ftKB)	Date
CODL, ORIGINAL HOLE		46	7,031.00	7,046.00	1/5/1994
CODL, ORIGINAL HOLE		60	7,031.00	7,046.00	3/5/2001

Stimulations & Treatments

Date	Zone	Primary Job Type
1/7/1994	CODL, ORIGINAL HOLE	DRILLING/COMPLETION - ORIGINAL
Technical Result	Tech Result Details	Tech Result Note

Comment

Well Name: RITER C18-10

VERTICAL - ORIGINAL HOLE, 10/22/2013 10:03:23 AM

Stimulations & Treatments

Date 3/10/2001	Zone CODL, ORIGINAL HOLE	Primary Job Type RE-FRAC
Technical Result	Tech Result Details	Tech Result Note
Comment		

Other In Hole

Run Date	Des	OD (in)	Top (ftKB)	Btm (ftKB)

Logs

Date	Type	Top (ftKB)	Btm (ftKB)
12/31/1993	COMPENSATED DENSITY	4,000.0	7,220.0
12/31/1993	INDUCTION	4,000.0	7,220.0
1/5/1994	CBL/CCL/GR	3,610.0	7,182.0

