

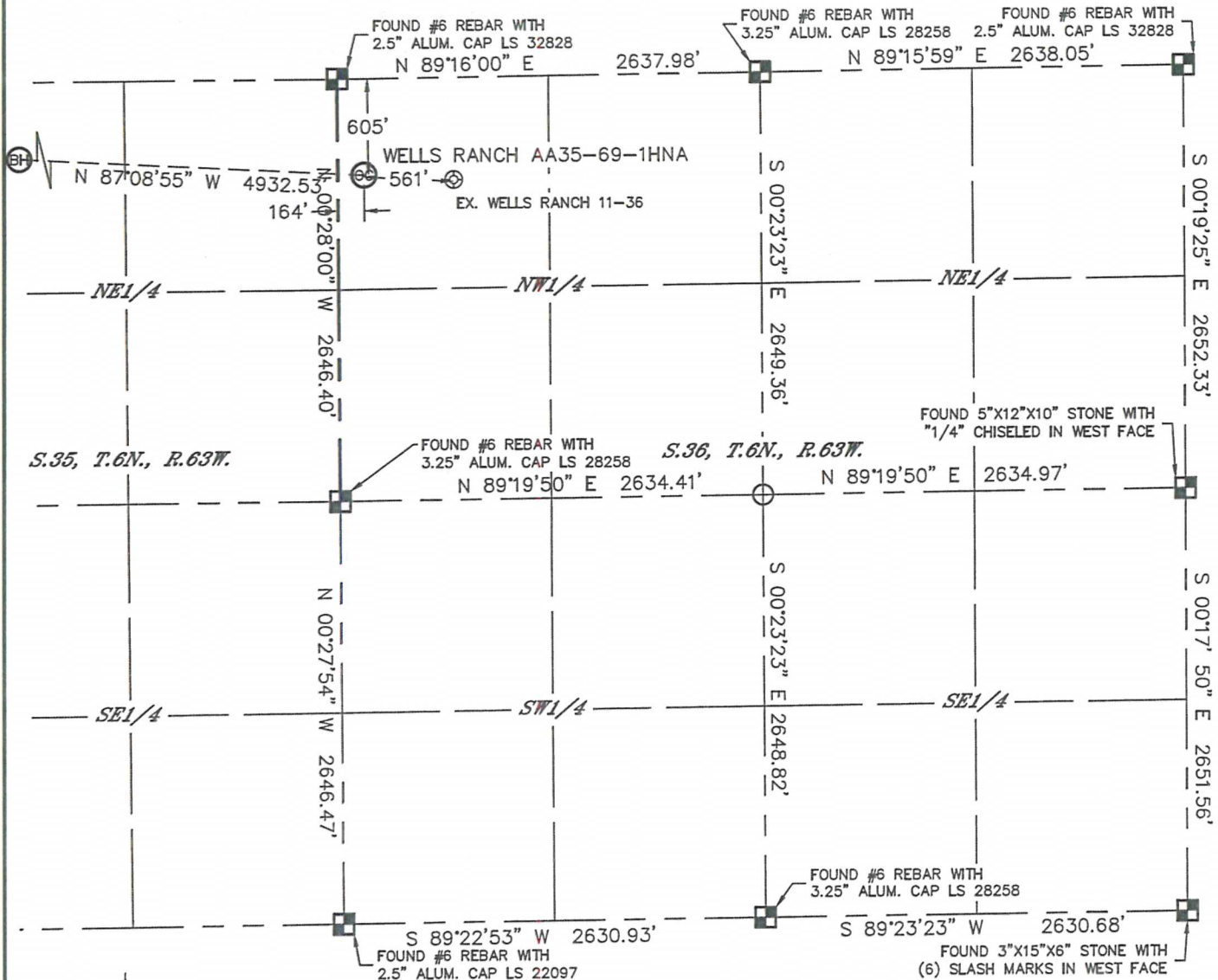


Lat40°, Inc. 1635 Foxtrail Drive, Suite 325 Loveland, CO 970-776-3321

# WELL LOCATION CERTIFICATE

SECTION: 36  
TOWNSHIP: 6N  
RANGE: 63W

THIS MAP DOES NOT REPRESENT A BOUNDARY SURVEY



In accordance with a request from JACOB RICE with Noble Energy Inc. Lat40°, Inc. has determined the surface location of the WELLS RANCH AA35-69-1HNA to be 605' from the NORTH line and 164' from the WEST line as measured at right angles from the section lines of Section 36, Township 6 North, Range 63 West and the bottom hole to be 330' from the NORTH line and 535' from the WEST line of Section 35, Township 6 North, Range 63 West of the Sixth Principal Meridian, County of Weld, State of Colorado.

I hereby state that this Well Location Certificate was prepared by me, or under my direct supervision, that the fieldwork was completed on 8/2/2013, for and on behalf of Noble Energy Inc. That this is not a Land Survey Plat or an Improvement Survey Plat, and that it is not to be relied upon for establishment of fence, building, or other future improvement lines.



NOTE: 1"=1000'

- 1) Bearings shown are Grid Bearings of the Colorado State Plane Coordinate System, North Zone, North American Datum 1983/2007. The lineal dimensions as contained herein are based upon the "U.S. Survey Foot."
  - 2) Ground elevations are based on an observed GPS elevation (NAVD 1988 DATUM).
  - 3) IMPROVEMENTS: See LOCATION DRAWING for all visible improvements within 500' of disturbed area.
  - 4) SURFACE USE: RANGELAND
  - 5) INSTRUMENT OPERATOR: ADAM KELLY
  - 6) NEAREST EXISTING WELL: WELLS RANCH 11-36 561'
- NEAREST CULTURAL ITEMS:  
BUILDING: 5280'+  
BUILDING UNIT: 5280'+  
HIGH OCCUPANCY BUILDING UNIT: 5280'+  
DESIGNATED OUTSIDE ACTIVITY AREA: 5280'+  
PUBLIC ROAD: 5280'+  
ABOVEGROUND UTILITY: 5280'+  
RAILROAD: 5280'+  
PROPERTY LINE: 164' WEST

**SURFACE LOCATION**  
LAT: 40.44849°N  
LONG: 104.39409°W  
PDOP: 1.2  
ELEV: 4809'  
1/4, 1/4: NW1/4NW1/4

**BOTTOM HOLE**  
LAT: 40.44933°N  
LONG: 104.41178°W

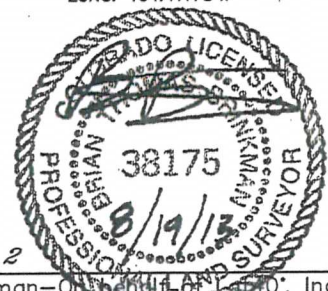
## LEGEND

- = ALIQUOT MONUMENT AS DESCRIBED  
○ = CALCULATED POSITION

SHEET 1 OF 2

Brian T. Brinkman—On Behalf of Lat40°, Inc.  
Colorado Licensed Professional  
Land Surveyor No. 38175

DATE: 8/19/2013  
PROJECT#: 2013028



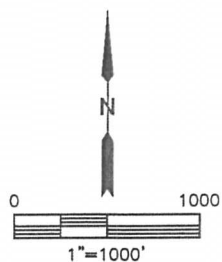
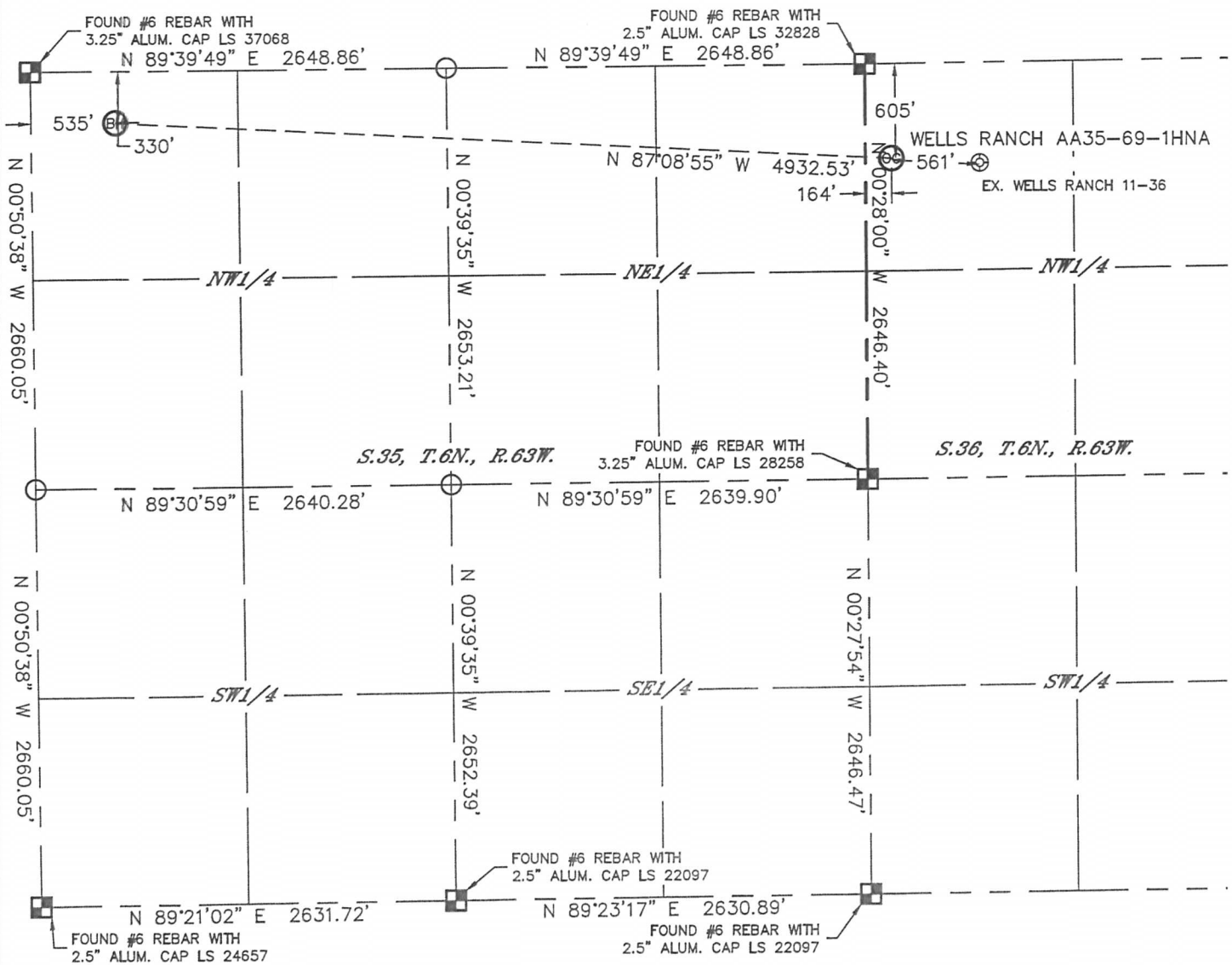


Lat40°, Inc. 1635 Foxtrail Drive, Suite 325 Loveland, CO 970-776-3321

# WELL LOCATION CERTIFICATE

THIS MAP DOES NOT REPRESENT A BOUNDARY SURVEY

SECTION: 36  
TOWNSHIP: 6N  
RANGE: 63W



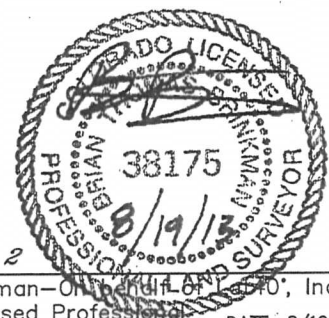
## LEGEND

- = ALIQUOT MONUMENT AS DESCRIBED
- = CALCULATED POSITION

## SHEET 2 OF 2

Brian T. Brinkman—Owner, Lat40°, Inc.  
Colorado Licensed Professional  
Land Surveyor No. 38175

DATE: 8/19/2013  
PROJECT#: 2013028



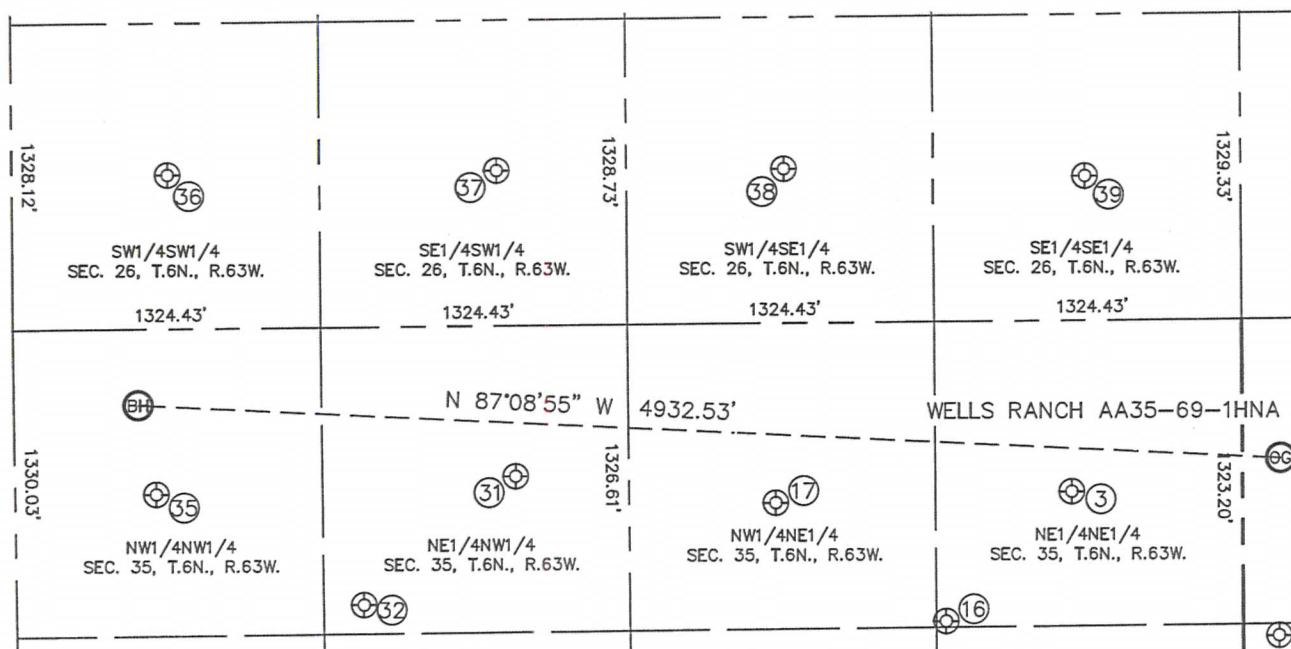


Lat40°, Inc. 1635 Foxtrail Drive, Suite 325 Loveland, CO 970-776-3321

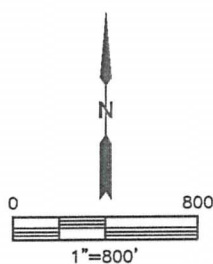
## SITE SKETCH

WELLS RANCH AA35-69-1HNA

SECTION: 36  
TOWNSHIP: 6N  
RANGE: 63W



WELL NO.	WELL NAME	SHL FOOTAGE				SHL LAT°	SHL LONG°	PDOP	ELEV (FT.)	1/4/1/4
3	WELLS RANCH USX AA 35-1	741	FNL	737	FEL	40.44813	-104.39733	1.9	4794	NENE
16	WELLS RANCH-USX AA 35-17	1298	FNL	1282	FEL	40.44661	-104.39930	1.5	4783	NENE
17	WELLS RANCH USX AA35-02	778	FNL	2012	FEL	40.44805	-104.40191	1.5	4792	NWNE
31	WELLS RANCH USX AA 35-03	651	FNL	2156	FWL	40.44842	-104.40595	1.6	4797	NENW
32	WELLS RANCH-USXAA 35-19	1202	FNL	1496	FWL	40.44692	-104.40832	1.7	4790	NENW
35	WELLS RANCH USX AA35-04	716	FNL	608	FWL	40.44827	-104.41151	1.8	4823	NWNW
36	WELLS RANCH AA 26-13X	667	FSL	670	FWL	40.45206	-104.41128	1.8	4820	SWSW
37	WELLS RANCH AA 26-14	674	FSL	2087	FWL	40.45206	-104.40620	1.8	4812	SESW
38	WELLS RANCH AA 26-15	669	FSL	1968	FEL	40.45202	-104.40173	1.7	4822	SWSE
39	WELLS RANCH AA 26-16	626	FSL	672	FEL	40.45188	-104.39708	1.6	4818	SESE



DATE: 8/19/2013  
PROJECT#: 2013028