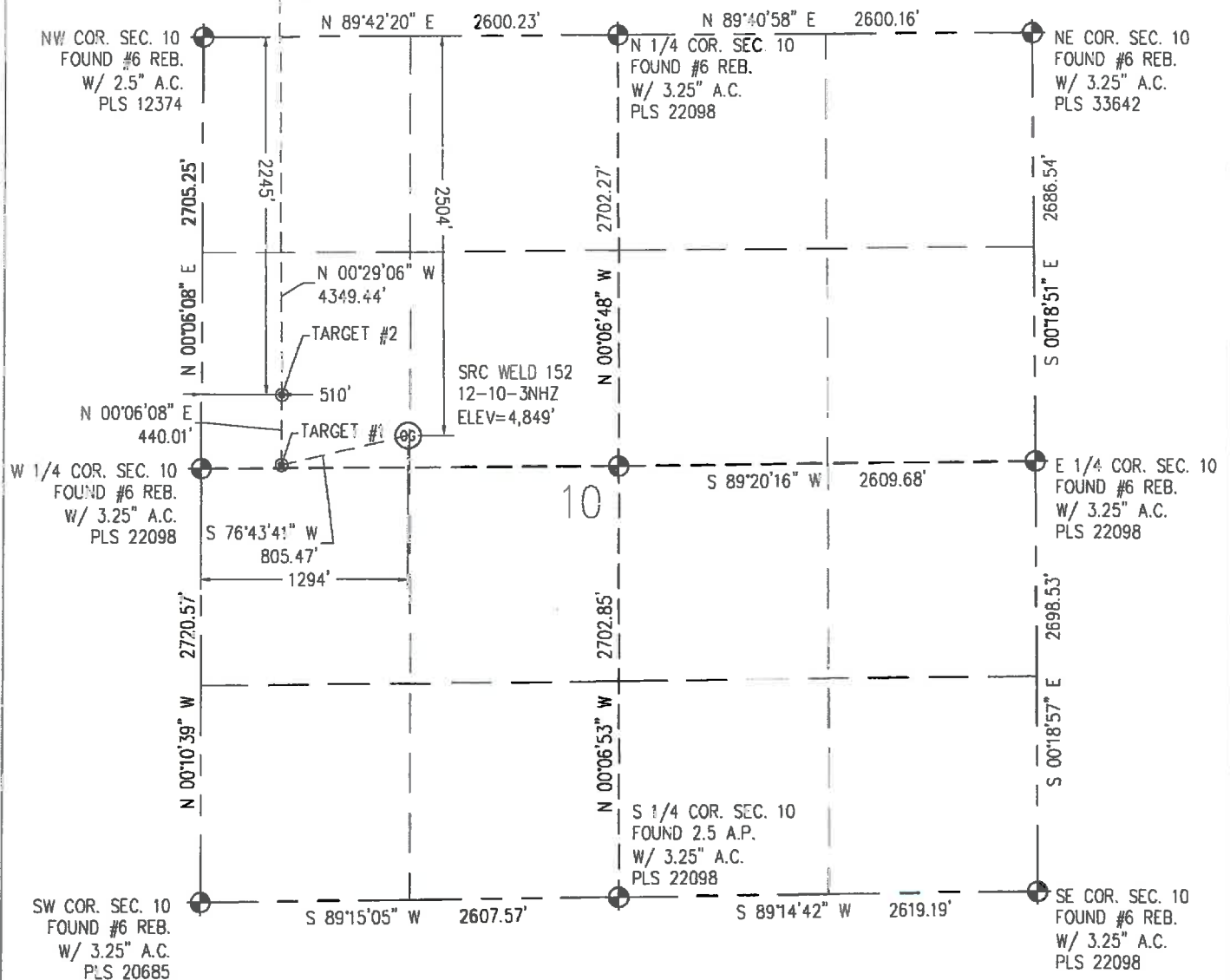


WELL LOCATION CERTIFICATE
THIS MAP DOES NOT REPRESENT A BOUNDARY SURVEY

SEE SHEET 2 OF 2



IN ACCORDANCE WITH A REQUEST FROM CRAIG RASMUSON - SYNERGY RESOURCES, BASELINE ENGINEERING CORP. HAS DETERMINED THE LOCATION OF THE SRC WELD 152 12-10-3NHZ TO BE 2,504' FNL AND 1,294' FWL, AS MEASURED AT NINETY (90) DEGREES FROM THE SECTION LINE OF SECTION 10, TOWNSHIP 6 NORTH, RANGE 67 WEST AND THE BOTTOM HOLE LOCATION TO BE 2,105' FSL AND 510' FWL OF SECTION 3, TOWNSHIP 6 NORTH, RANGE 67 WEST, 6TH PRINCIPAL MERIDIAN, WELD COUNTY, COLORADO.

I HEREBY CERTIFY THAT THIS WELL LOCATION CERTIFICATE WAS PREPARED BY ME, OR UNDER MY DIRECT SUPERVISION, THAT THE FIELD WORK WAS COMPLETED ON 4/20/2012, THAT IT IS NOT A LAND SURVEY PLAT OR AN IMPROVEMENT SURVEY PLAT, AND THAT IT IS NOT TO BE RELIED UPON FOR ESTABLISHMENT OF FENCE, BUILDING, OR OTHER FUTURE IMPROVEMENT LINES.

Scale 1" = 1000 ft

NOTES:

- 1) LAT/LONG SHOWN ARE BASED ON A GPS OBSERVATION (NAD83).
- 2) BEARINGS SHOWN ARE GRID BEARINGS OF THE COLORADO STATE PLANE COORDINATE SYSTEM, NORTH ZONE, NORTH AMERICAN DATUM 1983/2007.
- 3) GROUND ELEVATIONS ARE BASED ON A GPS OBSERVATION (NAVD 88 DATUM).
- 4) ALL DISTANCES SHOWN ARE FIELD MEASURED UNLESS OTHERWISE NOTED
- 5) THE NEAREST EXISTING WELL IS: NONE IN QUARTER SECTION
- 6) IMPROVEMENTS. SEE LOCATION DRAWING EXHIBIT FOR ALL VISIBLE IMPROVEMENTS WITHIN 600' OF WELL HEAD.
- 7) SURFACE USE. CORN FIELD.

SURFACE HOLE:
LATITUDE: 40.502120° N
LONGITUDE: 104.884227° W
PDOP: 1.0
1/4, 1/4 SW: 40W1/4
NEAREST PROPERTY LINE: 200' S
BOTTOM HOLE:
LATITUDE: 40.514774° N
LONGITUDE: 104.887060° W

TARGET #1:
LATITUDE: 40.501630° N
LONGITUDE: 104.887049° W
TARGET #2:
LATITUDE: 40.502838° N
LONGITUDE: 104.887036° W

LEGEND

- - FIELD/SET SURVEY MONUMENT PER MONUMENT RECORD EXCEPTIONS NOTED.
- - CALCULATED SURVEY MONUMENT POSITION
- (C) - CALCULATED DIMENSION

NOTICE: According to Colorado law you MUST commence any legal action based upon any defect in this W.L.C. within three years after you first discover such defect. In no event may any action based upon any defect in this W.L.C. be commenced more than ten years from this said date of the certification shown hereon.



AARON A. DEMO
Professional Land Surveyor Registration No. 38285
State of Colorado
FOR AND ON BEHALF OF BASELINE ENGINEERING CORP.

Completed
10/15/2013

JOB#: SYN06N67W10-01

WELL LOCATION CERTIFICATE
THIS MAP DOES NOT REPRESENT A BOUNDARY SURVEYWITNESS COR. NW COR. SEC. 3
FOUND #6 REB.
W/ 3.25" A.C.
PLS 34995N 89°16'55" E
350.05' (C)

N 89°16'08" E

2634.03'

N 89°16'00" E

2634.28'

NE COR. SEC. 3
FOUND #6 REB.
W/ 2.5" A.C.
PLS 12374WITNESS COR.
NW COR. SEC. 3
FOUND #6 REB.
W/ 3.25" A.C.
PLS 34995N 01°06'27" W
558.41'N 1/4 COR. SEC. 3
FOUND #6 REB.
W/ 2.5" A.C.
PLS 37929NW COR. SEC. 3
FOUND #6 REB.
W/ 3.25" A.C.
PLS 34995N 01°06'27" W
755.75'

2609.87'

2622.83'

N 01°06'39" W
1282.07'

N 00°44'26" W

S 00°21'30" E

W 1/4 COR. SEC. 3
FOUND #6 REB.
W/ 3.25" A.C.
PLS 22098

S 89°34'08" W

2617.37'

S 89°32'58" W

2616.82'

E 1/4 COR. SEC. 3
FOUND #6 REB.
W/ 3.25" A.C.
PLS 33642510'
BOTTOM HOLE
SRC WELD 152
12-1C-3NHZC 1/4 COR. SEC. 3
FOUND #6 REB.
W/ 3.25" A.C.
PLS 22098N 01°06'43" W
2563.83'

N 00°43'41" W

S 00°21'24" E

N 00°29'06" W
4349.44'NW COR. SEC. 10
FOUND #6 REB.
W/ 2.5" A.C.
PLS 12374

S 89°42'20" W

2600.23'

N 1/4 COR. SEC. 10
FOUND #6 REB.
W/ 3.25" A.C.
PLS 22098

S 89°40'58" W

2600.16'

NE COR. SEC. 10
FOUND #6 REB.
W/ 3.25" A.C.
PLS 33642

SEE SHEET 1 OF 2

0 1000
Scale 1" = 1000 ft

IN ACCORDANCE WITH A REQUEST FROM CRAIG RASMUSON - SYNERGY RESOURCES, BASELINE ENGINEERING CORP. HAS DETERMINED THE LOCATION OF THE SRC WELD 152 12-1C-3NHZ TO BE 2,504' FWL AND 1,294' FWL, AS MEASURED AT NINETY (90) DEGREES FROM THE SECTION LINE OF SECTION 10, TOWNSHIP 6 NORTH, RANGE 67 WEST AND THE BOTTOM HOLE LOCATION TO BE 2,105' FSL AND 510' FWL OF SECTION 3, TOWNSHIP 6 NORTH, RANGE 67 WEST, 6TH PRINCIPAL MERIDIAN, WELD COUNTY, COLORADO.

I HEREBY CERTIFY THAT THIS WELL LOCATION CERTIFICATE WAS PREPARED BY ME, OR UNDER MY DIRECT SUPERVISION, THAT THE FIELD WORK WAS COMPLETED ON 4/20/2012, THAT IT IS NOT A LAND SURVEY PLAT OR AN IMPROVEMENT SURVEY PLAT, AND THAT IT IS NOT TO BE RELIED UPON FOR ESTABLISHMENT OF FENCE, BUILDING, OR OTHER FUTURE IMPROVEMENT LINES.

NOTES:

- 1) LAT/LONG SHOWN ARE BASED ON A GPS OBSERVATION (NAD83).
- 2) BEARINGS SHOWN ARE GRID BEARINGS OF THE COLORADO STATE PLANE COORDINATE SYSTEM, NORTH ZONE, NORTH AMERICAN DATUM 1983/2007.
- 3) GROUND ELEVATIONS ARE BASED ON A GPS OBSERVATION (NAVD 88 DATUM).
- 4) ALL DISTANCES SHOWN ARE FIELD MEASURED UNLESS OTHERWISE NOTED.
- 5) THE NEAREST EXISTING WELL IS: NONE IN QUARTER SECTION.
- 6) IMPROVEMENTS: SEE LOCATION DRAWING EXHIBIT FOR ALL VISIBLE IMPROVEMENTS WITHIN 600' OF WELL HEAD.
- 7) SURFACE USE: CORN FIELD.

SURFACE HOLE:

LATITUDE: 40.502120° N
LONGITUDE: 104.884227° W
PDOP: 1.0
1/4, 1/4, SW1/4NW1/4
NEAREST PROPERTY LINE: 200' S
BOTTOM HOLE:
LATITUDE: 40.514774° N
LONGITUDE: 104.887060° W

TARGET #1:

LATITUDE: 40.501630° N
LONGITUDE: 104.887049° W
TARGET #2:
LATITUDE: 40.502838° N
LONGITUDE: 104.887036° W

LEGEND

- - FOUND/SET SURVEY MONUMENT PER MONUMENT RECORD EXCEPTS NOTED
- - CALCULATED SURVEY MONUMENT POSITION
- (C) - CALCULATED DIMENSION

AARON A. DEMO

Professional Land Surveyor Registration No. 38285
State of Colorado
FOR AND ON BEHALF OF BASELINE ENGINEERING CORP.

Completed
10/15/2013

NOTICE: According to Colorado law you MUST commence any legal action based upon any defect in this W.L.C. within three years after you first discover such defect. In no event may any action based upon any defect in this W.L.C. be commenced more than ten years from this said date of the certification shown hereon.

JOB#: SY106N67W1C-01