

Synergy Resources

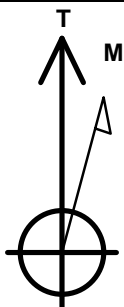
Well Name: **SRC Weld 152 12-10-3NHZ**

Surface Location: SRC Weld 152 Pad Sec.10-T6N-R67W
North American Datum 1983 , US State Plane 1983 , Colorado Northern Zone
Ground Elevation: 4849.0

+N/-S	+E/-W	Northing	Easting	Latitude	Longitude	Slot
0.0	0.0	1426357.38	3171239.44	40.502120	-104.884227	
Original Well Elev WELL @ 4861.0ft (Original Well Elev)						

WELBORE TARGET DETAILS

Name	TVD	+N/-S	+E/-W	Shape
SHL 2504'FSL & 1294'FWL, Sec.10		0.0	0.0	Point
460' Setback BHL	2.0	4610.1	-837.7	Polygon
460' Setback SHL	2.0	260.0	-834.0	Polygon
Half Section Line	2.0	-200.0	-1294.0	Polygon
BHL 2105'FSL & 510'FWL, Sec.3	7100.0	4610.1	-787.7	Point



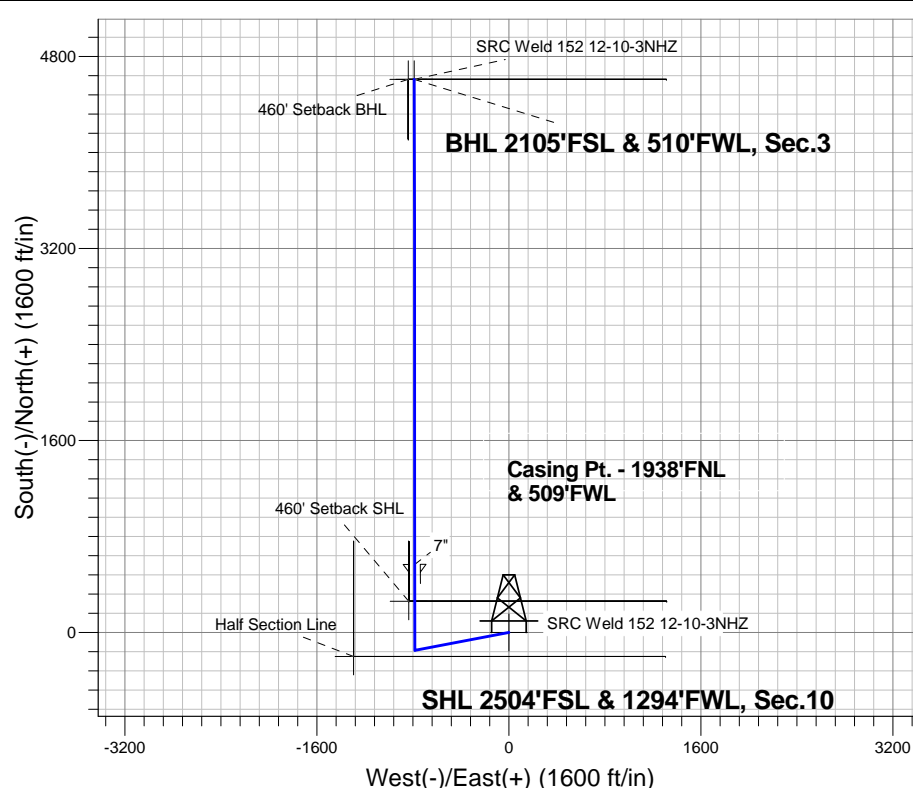
Azimuths to True North
Magnetic North: 8.62°

Magnetic Field
Strength: 52925.0snT
Dip Angle: 67.03°
Date: 10/18/2013
Model: IGRF2010

SRC Weld 152 Pad Sec.10-T6N-R67W
SRC Weld 152 12-10-3NHZ
Plan #2 (10-17-13)
9:31, October 18 2013

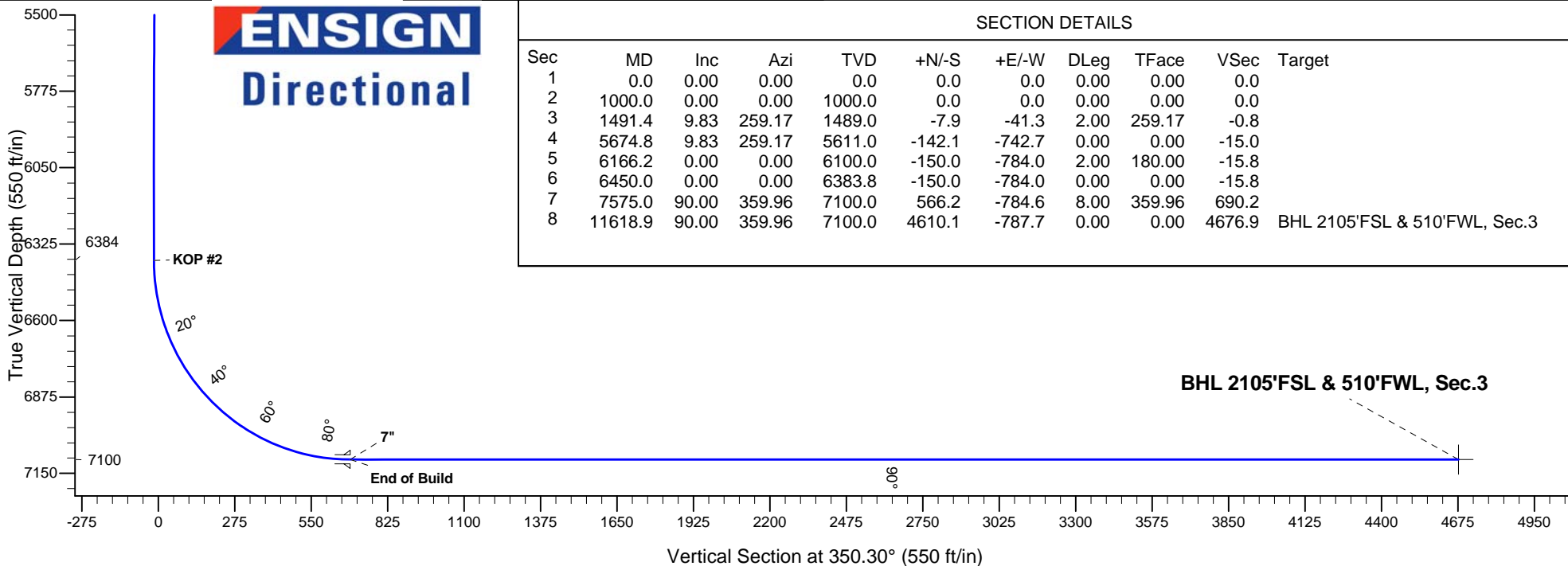
ANNOTATIONS

TVD	MD	Annotation
1000.0	1000.0	KOP #1
6383.8	6450.0	KOP #2
7100.0	7575.0	End of Build



SECTION DETAILS

Sec	MD	Inc	Azi	TVD	+N/-S	+E/-W	DLeg	TFace	VSec	Target
1	0.0	0.00	0.00	0.0	0.0	0.0	0.00	0.00	0.0	
2	1000.0	0.00	0.00	1000.0	0.0	0.0	0.00	0.00	0.0	
3	1491.4	9.83	259.17	1489.0	-7.9	-41.3	2.00	259.17	-0.8	
4	5674.8	9.83	259.17	5611.0	-142.1	-742.7	0.00	0.00	-15.0	
5	6166.2	0.00	0.00	6100.0	-150.0	-784.0	2.00	180.00	-15.8	
6	6450.0	0.00	0.00	6383.8	-150.0	-784.0	0.00	0.00	-15.8	
7	7575.0	90.00	359.96	7100.0	566.2	-784.6	8.00	359.96	690.2	
8	11618.9	90.00	359.96	7100.0	4610.1	-787.7	0.00	0.00	4676.9	BHL 2105'FSL & 510'FWL, Sec.3





Directional

Synergy Resources

SEC.10-T6N-R67W

SRC Weld 152 Pad Sec.10-T6N-R67W

SRC Weld 152 12-10-3NHZ

Wellbore #1

Plan: Plan #2 (10-17-13)

Standard Planning Report

18 October, 2013

Database:	Landmark	Local Co-ordinate Reference:	Well SRC Weld 152 12-10-3NHZ
Company:	Synergy Resources	TVD Reference:	WELL @ 4861.0ft (Original Well Elev)
Project:	SEC.10-T6N-R67W	MD Reference:	WELL @ 4861.0ft (Original Well Elev)
Site:	SRC Weld 152 Pad Sec.10-T6N-R67W	North Reference:	True
Well:	SRC Weld 152 12-10-3NHZ	Survey Calculation Method:	Minimum Curvature
Wellbore:	Wellbore #1		
Design:	Plan #2 (10-17-13)		

Project	SEC.10-T6N-R67W, Weld County, CO		
Map System:	US State Plane 1983	System Datum:	Mean Sea Level
Geo Datum:	North American Datum 1983		Using Well Reference Point
Map Zone:	Colorado Northern Zone		Using geodetic scale factor

Site						SRC Weld 152 Pad Sec.10-T6N-R67W											
Site Position:						Northing:			1,426,318.75 ft			Latitude:			40.50213		
From:			Lat/Long			Easting:			3,171,289.77 ft			Longitude:			-104.884047		
Position Uncertainty:			0.0 ft			Slot Radius:			"			Grid Convergence:			0.40 °		

Well	SRC Weld 152 12-10-3NHZ					
Well Position	+N-S	39.0 ft	Northing:	1,426,357.38 ft	Latitude:	40.502120
	+E-W	-50.1 ft	Easting:	3,171,239.44 ft	Longitude:	-104.884227
Position Uncertainty		0.0 ft	Wellhead Elevation:	ft	Ground Level:	4,849.0 ft

Wellbore	Wellbore #1				
Magnetics	Model Name	Sample Date	Declination (°)	Dip Angle (°)	Field Strength (nT)
	IGRF2010	10/18/2013	8.62	67.03	52,925

Design	Plan #2 (10-17-13)			
Audit Notes:				
Version:	Phase:	PROTOTYPE	Tie On Depth:	0.0
Vertical Section:	Depth From (TVD) (ft)	+N/-S (ft)	+E/-W (ft)	Direction (°)
	0.0	0.0	0.0	350.30

Plan Sections										
Measured Depth (ft)	Inclination (°)	Azimuth (°)	Vertical Depth (ft)	+N/-S (ft)	+E/-W (ft)	Dogleg Rate (°/100ft)	Build Rate (°/100ft)	Turn Rate (°/100ft)	TFO (°)	Target
0.0	0.00	0.00	0.0	0.0	0.0	0.00	0.00	0.00	0.00	
1,000.0	0.00	0.00	1,000.0	0.0	0.0	0.00	0.00	0.00	0.00	
1,491.4	9.83	259.17	1,489.0	-7.9	-41.3	2.00	2.00	0.00	259.17	
5,674.8	9.83	259.17	5,611.0	-142.1	-742.7	0.00	0.00	0.00	0.00	
6,166.2	0.00	0.00	6,100.0	-150.0	-784.0	2.00	-2.00	0.00	180.00	
6,450.0	0.00	0.00	6,383.8	-150.0	-784.0	0.00	0.00	0.00	0.00	
7,575.0	90.00	359.96	7,100.0	566.2	-784.6	8.00	8.00	0.00	359.96	
11,618.9	90.00	359.96	7,100.0	4,610.1	-787.7	0.00	0.00	0.00	0.00	BHL 2105'FSL & 51

Database:	Landmark	Local Co-ordinate Reference:	Well SRC Weld 152 12-10-3NHZ
Company:	Synergy Resources	TVD Reference:	WELL @ 4861.0ft (Original Well Elev)
Project:	SEC.10-T6N-R67W	MD Reference:	WELL @ 4861.0ft (Original Well Elev)
Site:	SRC Weld 152 Pad Sec.10-T6N-R67W	North Reference:	True
Well:	SRC Weld 152 12-10-3NHZ	Survey Calculation Method:	Minimum Curvature
Wellbore:	Wellbore #1		
Design:	Plan #2 (10-17-13)		

Planned Survey									
Measured Depth (ft)	Inclination (°)	Azimuth (°)	Vertical Depth (ft)	+N/-S (ft)	+E/-W (ft)	Vertical Section (ft)	Dogleg Rate (°/100ft)	Build Rate (°/100ft)	Turn Rate (°/100ft)
0.0	0.00	0.00	0.0	0.0	0.0	0.0	0.00	0.00	0.00
1.0	0.00	0.00	1.0	0.0	0.0	0.0	0.00	0.00	0.00
SHL 2504'FSL & 1294'FWL, Sec.10									
2.0	0.00	0.00	2.0	0.0	0.0	0.0	0.00	0.00	0.00
460' Setback BHL - 460' Setback SHL - Half Section Line									
100.0	0.00	0.00	100.0	0.0	0.0	0.0	0.00	0.00	0.00
200.0	0.00	0.00	200.0	0.0	0.0	0.0	0.00	0.00	0.00
300.0	0.00	0.00	300.0	0.0	0.0	0.0	0.00	0.00	0.00
400.0	0.00	0.00	400.0	0.0	0.0	0.0	0.00	0.00	0.00
500.0	0.00	0.00	500.0	0.0	0.0	0.0	0.00	0.00	0.00
600.0	0.00	0.00	600.0	0.0	0.0	0.0	0.00	0.00	0.00
700.0	0.00	0.00	700.0	0.0	0.0	0.0	0.00	0.00	0.00
800.0	0.00	0.00	800.0	0.0	0.0	0.0	0.00	0.00	0.00
900.0	0.00	0.00	900.0	0.0	0.0	0.0	0.00	0.00	0.00
1,000.0	0.00	0.00	1,000.0	0.0	0.0	0.0	0.00	0.00	0.00
KOP #1									
1,100.0	2.00	259.17	1,100.0	-0.3	-1.7	0.0	2.00	2.00	0.00
1,200.0	4.00	259.17	1,199.8	-1.3	-6.9	-0.1	2.00	2.00	0.00
1,300.0	6.00	259.17	1,299.5	-2.9	-15.4	-0.3	2.00	2.00	0.00
1,400.0	8.00	259.17	1,398.7	-5.2	-27.4	-0.6	2.00	2.00	0.00
1,491.4	9.83	259.17	1,489.0	-7.9	-41.3	-0.8	2.00	2.00	0.00
1,500.0	9.83	259.17	1,497.5	-8.2	-42.7	-0.9	0.00	0.00	0.00
1,600.0	9.83	259.17	1,596.0	-11.4	-59.5	-1.2	0.00	0.00	0.00
1,700.0	9.83	259.17	1,694.5	-14.6	-76.3	-1.5	0.00	0.00	0.00
1,800.0	9.83	259.17	1,793.1	-17.8	-93.0	-1.9	0.00	0.00	0.00
1,900.0	9.83	259.17	1,891.6	-21.0	-109.8	-2.2	0.00	0.00	0.00
2,000.0	9.83	259.17	1,990.1	-24.2	-126.6	-2.6	0.00	0.00	0.00
2,100.0	9.83	259.17	2,088.7	-27.4	-143.3	-2.9	0.00	0.00	0.00
2,200.0	9.83	259.17	2,187.2	-30.6	-160.1	-3.2	0.00	0.00	0.00
2,300.0	9.83	259.17	2,285.7	-33.8	-176.9	-3.6	0.00	0.00	0.00
2,400.0	9.83	259.17	2,384.3	-37.0	-193.6	-3.9	0.00	0.00	0.00
2,500.0	9.83	259.17	2,482.8	-40.3	-210.4	-4.2	0.00	0.00	0.00
2,600.0	9.83	259.17	2,581.3	-43.5	-227.2	-4.6	0.00	0.00	0.00
2,700.0	9.83	259.17	2,679.9	-46.7	-243.9	-4.9	0.00	0.00	0.00
2,800.0	9.83	259.17	2,778.4	-49.9	-260.7	-5.3	0.00	0.00	0.00
2,900.0	9.83	259.17	2,876.9	-53.1	-277.5	-5.6	0.00	0.00	0.00
3,000.0	9.83	259.17	2,975.5	-56.3	-294.2	-5.9	0.00	0.00	0.00
3,100.0	9.83	259.17	3,074.0	-59.5	-311.0	-6.3	0.00	0.00	0.00
3,200.0	9.83	259.17	3,172.5	-62.7	-327.8	-6.6	0.00	0.00	0.00
3,300.0	9.83	259.17	3,271.0	-65.9	-344.5	-6.9	0.00	0.00	0.00
3,400.0	9.83	259.17	3,369.6	-69.1	-361.3	-7.3	0.00	0.00	0.00
3,500.0	9.83	259.17	3,468.1	-72.3	-378.1	-7.6	0.00	0.00	0.00
3,600.0	9.83	259.17	3,566.6	-75.5	-394.8	-8.0	0.00	0.00	0.00
3,700.0	9.83	259.17	3,665.2	-78.7	-411.6	-8.3	0.00	0.00	0.00
3,800.0	9.83	259.17	3,763.7	-82.0	-428.4	-8.6	0.00	0.00	0.00
3,900.0	9.83	259.17	3,862.2	-85.2	-445.1	-9.0	0.00	0.00	0.00
4,000.0	9.83	259.17	3,960.8	-88.4	-461.9	-9.3	0.00	0.00	0.00
4,100.0	9.83	259.17	4,059.3	-91.6	-478.7	-9.7	0.00	0.00	0.00
4,200.0	9.83	259.17	4,157.8	-94.8	-495.4	-10.0	0.00	0.00	0.00
4,300.0	9.83	259.17	4,256.4	-98.0	-512.2	-10.3	0.00	0.00	0.00
4,400.0	9.83	259.17	4,354.9	-101.2	-529.0	-10.7	0.00	0.00	0.00
4,500.0	9.83	259.17	4,453.4	-104.4	-545.7	-11.0	0.00	0.00	0.00
4,600.0	9.83	259.17	4,552.0	-107.6	-562.5	-11.3	0.00	0.00	0.00

Database:	Landmark	Local Co-ordinate Reference:	Well SRC Weld 152 12-10-3NHZ
Company:	Synergy Resources	TVD Reference:	WELL @ 4861.0ft (Original Well Elev)
Project:	SEC.10-T6N-R67W	MD Reference:	WELL @ 4861.0ft (Original Well Elev)
Site:	SRC Weld 152 Pad Sec.10-T6N-R67W	North Reference:	True
Well:	SRC Weld 152 12-10-3NHZ	Survey Calculation Method:	Minimum Curvature
Wellbore:	Wellbore #1		
Design:	Plan #2 (10-17-13)		

Planned Survey									
Measured Depth (ft)	Inclination (°)	Azimuth (°)	Vertical Depth (ft)	+N/-S (ft)	+E/-W (ft)	Vertical Section (ft)	Dogleg Rate (°/100ft)	Build Rate (°/100ft)	Turn Rate (°/100ft)
4,700.0	9.83	259.17	4,650.5	-110.8	-579.3	-11.7	0.00	0.00	0.00
4,800.0	9.83	259.17	4,749.0	-114.0	-596.0	-12.0	0.00	0.00	0.00
4,900.0	9.83	259.17	4,847.6	-117.2	-612.8	-12.4	0.00	0.00	0.00
5,000.0	9.83	259.17	4,946.1	-120.5	-629.6	-12.7	0.00	0.00	0.00
5,100.0	9.83	259.17	5,044.6	-123.7	-646.3	-13.0	0.00	0.00	0.00
5,200.0	9.83	259.17	5,143.2	-126.9	-663.1	-13.4	0.00	0.00	0.00
5,300.0	9.83	259.17	5,241.7	-130.1	-679.9	-13.7	0.00	0.00	0.00
5,400.0	9.83	259.17	5,340.2	-133.3	-696.6	-14.0	0.00	0.00	0.00
5,500.0	9.83	259.17	5,438.8	-136.5	-713.4	-14.4	0.00	0.00	0.00
5,600.0	9.83	259.17	5,537.3	-139.7	-730.2	-14.7	0.00	0.00	0.00
5,674.8	9.83	259.17	5,611.0	-142.1	-742.7	-15.0	0.00	0.00	0.00
5,700.0	9.32	259.17	5,635.8	-142.9	-746.8	-15.1	2.00	-2.00	0.00
5,800.0	7.32	259.17	5,734.8	-145.6	-761.0	-15.3	2.00	-2.00	0.00
5,900.0	5.32	259.17	5,834.2	-147.7	-771.9	-15.6	2.00	-2.00	0.00
6,000.0	3.32	259.17	5,933.9	-149.1	-779.3	-15.7	2.00	-2.00	0.00
6,100.0	1.32	259.17	6,033.8	-149.9	-783.2	-15.8	2.00	-2.00	0.00
6,166.2	0.00	0.00	6,100.0	-150.0	-784.0	-15.8	2.00	-2.00	0.00
6,200.0	0.00	0.00	6,133.8	-150.0	-784.0	-15.8	0.00	0.00	0.00
6,300.0	0.00	0.00	6,233.8	-150.0	-784.0	-15.8	0.00	0.00	0.00
6,400.0	0.00	0.00	6,333.8	-150.0	-784.0	-15.8	0.00	0.00	0.00
6,450.0	0.00	0.00	6,383.8	-150.0	-784.0	-15.8	0.00	0.00	0.00
KOP #2									
6,500.0	4.00	359.96	6,433.7	-148.3	-784.0	-14.1	8.00	8.00	0.00
6,600.0	12.00	359.96	6,532.7	-134.4	-784.0	-0.4	8.00	8.00	0.00
6,700.0	20.00	359.96	6,628.7	-106.8	-784.0	26.8	8.00	8.00	0.00
6,800.0	28.00	359.96	6,720.0	-66.2	-784.1	66.8	8.00	8.00	0.00
6,900.0	36.00	359.96	6,804.8	-13.2	-784.1	119.0	8.00	8.00	0.00
7,000.0	44.00	359.96	6,881.3	51.0	-784.2	182.3	8.00	8.00	0.00
7,100.0	52.00	359.96	6,948.2	125.2	-784.2	255.5	8.00	8.00	0.00
7,200.0	60.00	359.96	7,004.0	208.1	-784.3	337.2	8.00	8.00	0.00
7,300.0	68.00	359.96	7,047.8	297.9	-784.3	425.7	8.00	8.00	0.00
7,400.0	76.00	359.96	7,078.7	392.9	-784.4	519.4	8.00	8.00	0.00
7,500.0	84.00	359.96	7,096.1	491.3	-784.5	616.4	8.00	8.00	0.00
7,575.0	90.00	359.96	7,100.0	566.2	-784.6	690.2	8.00	8.00	0.00
End of Build - 7"									
7,600.0	90.00	359.96	7,100.0	591.2	-784.6	714.9	0.01	0.01	0.00
7,700.0	90.00	359.96	7,100.0	691.2	-784.7	813.5	0.00	0.00	0.00
7,800.0	90.00	359.96	7,100.0	791.2	-784.7	912.0	0.00	0.00	0.00
7,900.0	90.00	359.96	7,100.0	891.2	-784.8	1,010.6	0.00	0.00	0.00
8,000.0	90.00	359.96	7,100.0	991.2	-784.9	1,109.2	0.00	0.00	0.00
8,100.0	90.00	359.96	7,100.0	1,091.2	-785.0	1,207.8	0.00	0.00	0.00
8,200.0	90.00	359.96	7,100.0	1,191.2	-785.0	1,306.4	0.00	0.00	0.00
8,300.0	90.00	359.96	7,100.0	1,291.2	-785.1	1,405.0	0.00	0.00	0.00
8,400.0	90.00	359.96	7,100.0	1,391.2	-785.2	1,503.6	0.00	0.00	0.00
8,500.0	90.00	359.96	7,100.0	1,491.2	-785.3	1,602.1	0.00	0.00	0.00
8,600.0	90.00	359.96	7,100.0	1,591.2	-785.4	1,700.7	0.00	0.00	0.00
8,700.0	90.00	359.96	7,100.0	1,691.2	-785.4	1,799.3	0.00	0.00	0.00
8,800.0	90.00	359.96	7,100.0	1,791.2	-785.5	1,897.9	0.00	0.00	0.00
8,900.0	90.00	359.96	7,100.0	1,891.2	-785.6	1,996.5	0.00	0.00	0.00
9,000.0	90.00	359.96	7,100.0	1,991.2	-785.7	2,095.1	0.00	0.00	0.00
9,100.0	90.00	359.96	7,100.0	2,091.2	-785.7	2,193.6	0.00	0.00	0.00
9,200.0	90.00	359.96	7,100.0	2,191.2	-785.8	2,292.2	0.00	0.00	0.00
9,300.0	90.00	359.96	7,100.0	2,291.2	-785.9	2,390.8	0.00	0.00	0.00
9,400.0	90.00	359.96	7,100.0	2,391.2	-786.0	2,489.4	0.00	0.00	0.00

Database:	Landmark	Local Co-ordinate Reference:	Well SRC Weld 152 12-10-3NHZ
Company:	Synergy Resources	TVD Reference:	WELL @ 4861.0ft (Original Well Elev)
Project:	SEC.10-T6N-R67W	MD Reference:	WELL @ 4861.0ft (Original Well Elev)
Site:	SRC Weld 152 Pad Sec.10-T6N-R67W	North Reference:	True
Well:	SRC Weld 152 12-10-3NHZ	Survey Calculation Method:	Minimum Curvature
Wellbore:	Wellbore #1		
Design:	Plan #2 (10-17-13)		

Planned Survey									
Measured Depth (ft)	Inclination (°)	Azimuth (°)	Vertical Depth (ft)	+N/-S (ft)	+E/-W (ft)	Vertical Section (ft)	Dogleg Rate (°/100ft)	Build Rate (°/100ft)	Turn Rate (°/100ft)
9,500.0	90.00	359.96	7,100.0	2,491.2	-786.1	2,588.0	0.00	0.00	0.00
9,600.0	90.00	359.96	7,100.0	2,591.2	-786.1	2,686.6	0.00	0.00	0.00
9,700.0	90.00	359.96	7,100.0	2,691.2	-786.2	2,785.2	0.00	0.00	0.00
9,800.0	90.00	359.96	7,100.0	2,791.2	-786.3	2,883.7	0.00	0.00	0.00
9,900.0	90.00	359.96	7,100.0	2,891.2	-786.4	2,982.3	0.00	0.00	0.00
10,000.0	90.00	359.96	7,100.0	2,991.2	-786.4	3,080.9	0.00	0.00	0.00
10,100.0	90.00	359.96	7,100.0	3,091.2	-786.5	3,179.5	0.00	0.00	0.00
10,200.0	90.00	359.96	7,100.0	3,191.2	-786.6	3,278.1	0.00	0.00	0.00
10,300.0	90.00	359.96	7,100.0	3,291.2	-786.7	3,376.7	0.00	0.00	0.00
10,400.0	90.00	359.96	7,100.0	3,391.2	-786.8	3,475.2	0.00	0.00	0.00
10,500.0	90.00	359.96	7,100.0	3,491.2	-786.8	3,573.8	0.00	0.00	0.00
10,600.0	90.00	359.96	7,100.0	3,591.2	-786.9	3,672.4	0.00	0.00	0.00
10,700.0	90.00	359.96	7,100.0	3,691.2	-787.0	3,771.0	0.00	0.00	0.00
10,800.0	90.00	359.96	7,100.0	3,791.2	-787.1	3,869.6	0.00	0.00	0.00
10,900.0	90.00	359.96	7,100.0	3,891.2	-787.2	3,968.2	0.00	0.00	0.00
11,000.0	90.00	359.96	7,100.0	3,991.2	-787.2	4,066.7	0.00	0.00	0.00
11,100.0	90.00	359.96	7,100.0	4,091.2	-787.3	4,165.3	0.00	0.00	0.00
11,200.0	90.00	359.96	7,100.0	4,191.2	-787.4	4,263.9	0.00	0.00	0.00
11,300.0	90.00	359.96	7,100.0	4,291.2	-787.5	4,362.5	0.00	0.00	0.00
11,400.0	90.00	359.96	7,100.0	4,391.2	-787.5	4,461.1	0.00	0.00	0.00
11,500.0	90.00	359.96	7,100.0	4,491.2	-787.6	4,559.7	0.00	0.00	0.00
11,600.0	90.00	359.96	7,100.0	4,591.2	-787.7	4,658.3	0.00	0.00	0.00
11,618.9	90.00	359.96	7,100.0	4,610.1	-787.7	4,676.9	0.00	0.00	0.00
BHL 2105'FSL & 510'FWL, Sec.3									

Database:	Landmark	Local Co-ordinate Reference:	Well SRC Weld 152 12-10-3NHZ
Company:	Synergy Resources	TVD Reference:	WELL @ 4861.0ft (Original Well Elev)
Project:	SEC.10-T6N-R67W	MD Reference:	WELL @ 4861.0ft (Original Well Elev)
Site:	SRC Weld 152 Pad Sec.10-T6N-R67W	North Reference:	True
Well:	SRC Weld 152 12-10-3NHZ	Survey Calculation Method:	Minimum Curvature
Wellbore:	Wellbore #1		
Design:	Plan #2 (10-17-13)		

Targets									
Target Name									
- hit/miss target	Dip Angle	Dip Dir.	TVD	+N/-S	+E/-W	Northing	Easting	Latitude	Longitude
- Shape	(°)	(°)	(ft)	(ft)	(ft)	(ft)	(ft)		
460' Setback BHL	0.00	0.00	2.0	4,610.1	-837.7	1,430,961.40	3,170,369.78	40.514774	-104.887240
- plan misses target center by 4685.6ft at 2.0ft MD (2.0 TVD, 0.0 N, 0.0 E)									
- Polygon									
Point 1			2.0	0.0	0.0	1,430,961.40	3,170,369.78		
Point 2			2.0	0.0	2,150.0	1,430,976.33	3,172,519.65		
Point 3			2.0	0.0	0.0	1,430,961.40	3,170,369.78		
Point 4			2.0	-500.0	0.0	1,430,461.43	3,170,373.25		
460' Setback SHL	0.00	0.00	2.0	260.0	-834.0	1,426,611.55	3,170,403.69	40.502834	-104.887226
- plan misses target center by 873.6ft at 2.0ft MD (2.0 TVD, 0.0 N, 0.0 E)									
- Polygon									
Point 1			2.0	0.0	0.0	1,426,611.55	3,170,403.69		
Point 2			2.0	0.0	2,150.0	1,426,626.48	3,172,553.56		
Point 3			2.0	0.0	0.0	1,426,611.55	3,170,403.69		
Point 4			2.0	500.0	0.0	1,427,111.52	3,170,400.21		
SHL 2504'FSL & 1294'	0.00	0.00	1.0	0.0	0.0	1,426,357.39	3,171,239.44	40.502120	-104.884227
- plan hits target center									
- Point									
Half Section Line	0.00	0.00	2.0	-200.0	-1,294.0	1,426,148.38	3,169,946.91	40.501571	-104.888880
- plan misses target center by 1309.4ft at 2.0ft MD (2.0 TVD, 0.0 N, 0.0 E)									
- Polygon									
Point 1			2.0	0.0	0.0	1,426,148.38	3,169,946.91		
Point 2			2.0	0.0	2,600.0	1,426,166.44	3,172,546.75		
Point 3			2.0	0.0	0.0	1,426,148.38	3,169,946.91		
Point 4			2.0	960.0	0.0	1,427,108.32	3,169,940.24		
BHL 2105'FSL & 510'I	0.00	0.00	7,100.0	4,610.1	-787.7	1,430,961.75	3,170,419.76	40.514774	-104.887060
- plan hits target center									
- Point									

Casing Points					
Measured Depth (ft)	Vertical Depth (ft)	Name	Casing Diameter (")	Hole Diameter (")	
7,575.0	7,100.0	7"	7	7-1/2	

Plan Annotations					
Measured Depth (ft)	Vertical Depth (ft)	Local Coordinates		Comment	
		+N/-S (ft)	+E/-W (ft)		
1,000.0	1,000.0	0.0	0.0	KOP #1	
6,450.0	6,383.8	-150.0	-784.0	KOP #2	
7,575.0	7,100.0	566.2	-784.6	End of Build	



Directional

Synergy Resources

SEC.10-T6N-R67W

SRC Weld 152 Pad Sec.10-T6N-R67W

SRC Weld 152 12-10-3NHZ

Wellbore #1

Plan #2 (10-17-13)

Anticollision Report

18 October, 2013

Company:	Synergy Resources	Local Co-ordinate Reference:	Well SRC Weld 152 12-10-3NHZ
Project:	SEC.10-T6N-R67W	TVD Reference:	WELL @ 4861.0ft (Original Well Elev)
Reference Site:	SRC Weld 152 Pad Sec.10-T6N-R67W	MD Reference:	WELL @ 4861.0ft (Original Well Elev)
Site Error:	0.0ft	North Reference:	True
Reference Well:	SRC Weld 152 12-10-3NHZ	Survey Calculation Method:	Minimum Curvature
Well Error:	0.0ft	Output errors are at	2.00 sigma
Reference Wellbore	Wellbore #1	Database:	Landmark
Reference Design:	Plan #2 (10-17-13)	Offset TVD Reference:	Offset Datum

Offset Design													Offset Site Error:	0.0 ft
Survey Program: 0-MWD													Offset Well Error:	0.0 ft
Reference		Offset		Semi Major Axis			Distance							Warning
Measured Depth (ft)	Vertical Depth (ft)	Measured Depth (ft)	Vertical Depth (ft)	Reference (ft)	Offset (ft)	Highside Toolface (°)	Offset Wellbore Centre +N/-S (ft)	+E/-W (ft)	Between Centres (ft)	Between Ellipses (ft)	Minimum Separation (ft)	Separation Factor		
1,600.0	1,596.0	1,599.0	1,599.0	3.6	3.5	-175.95	-0.9	28.4	88.6	81.8	6.78	13.056		
1,700.0	1,694.5	1,701.7	1,701.5	3.9	3.7	-176.11	-2.5	23.3	100.5	93.3	7.20	13.965		
1,800.0	1,793.1	1,805.0	1,804.4	4.2	3.9	-175.88	-5.2	14.5	108.9	101.3	7.62	14.288		
1,900.0	1,891.6	1,907.2	1,905.9	4.6	4.1	-175.38	-8.8	2.7	114.1	106.0	8.06	14.156		
2,000.0	1,990.1	2,007.1	2,005.0	4.9	4.4	-174.86	-12.6	-9.5	118.6	110.1	8.50	13.952		
2,100.0	2,088.7	2,107.0	2,104.1	5.3	4.6	-174.39	-16.4	-21.7	123.1	114.2	8.95	13.758		
2,200.0	2,187.2	2,206.9	2,203.1	5.6	4.9	-173.95	-20.2	-33.9	127.6	118.2	9.40	13.573		
2,300.0	2,285.7	2,306.8	2,302.2	6.0	5.1	-173.54	-24.0	-46.1	132.2	122.3	9.87	13.398		
2,400.0	2,384.3	2,406.7	2,401.3	6.4	5.4	-173.15	-27.7	-58.3	136.7	126.4	10.33	13.232		
2,500.0	2,482.8	2,506.6	2,500.3	6.8	5.7	-172.79	-31.5	-70.5	141.3	130.5	10.81	13.075		
2,600.0	2,581.3	2,606.5	2,599.4	7.1	6.0	-172.46	-35.3	-82.7	145.9	134.6	11.28	12.927		
2,700.0	2,679.9	2,706.4	2,698.5	7.5	6.3	-172.14	-39.1	-94.9	150.4	138.7	11.76	12.787		
2,800.0	2,778.4	2,806.3	2,797.6	7.9	6.6	-171.84	-42.8	-107.0	155.0	142.8	12.25	12.655		
2,900.0	2,876.9	2,906.2	2,896.6	8.3	6.9	-171.56	-46.6	-119.2	159.6	146.8	12.74	12.530		
3,000.0	2,975.5	3,006.1	2,995.7	8.7	7.2	-171.30	-50.4	-131.4	164.2	150.9	13.23	12.411		
3,100.0	3,074.0	3,105.9	3,094.8	9.1	7.5	-171.05	-54.2	-143.6	168.7	155.0	13.72	12.299		
3,200.0	3,172.5	3,205.8	3,193.9	9.5	7.8	-170.81	-58.0	-155.8	173.3	159.1	14.22	12.193		
3,300.0	3,271.0	3,305.7	3,292.9	9.9	8.1	-170.59	-61.7	-168.0	177.9	163.2	14.71	12.092		
3,400.0	3,369.6	3,405.6	3,392.0	10.2	8.4	-170.37	-65.5	-180.2	182.5	167.3	15.21	11.996		
3,500.0	3,468.1	3,505.5	3,491.1	10.6	8.7	-170.17	-69.3	-192.4	187.1	171.4	15.72	11.905		
3,600.0	3,566.6	3,605.4	3,590.2	11.0	9.1	-169.98	-73.1	-204.6	191.7	175.5	16.22	11.819		
3,700.0	3,665.2	3,705.3	3,689.2	11.4	9.4	-169.79	-76.9	-216.8	196.3	179.6	16.73	11.736		
3,800.0	3,763.7	3,805.2	3,788.3	11.8	9.7	-169.62	-80.6	-229.0	200.9	183.7	17.23	11.658		
3,900.0	3,862.2	3,905.1	3,887.4	12.2	10.0	-169.45	-84.4	-241.2	205.5	187.8	17.74	11.583		
4,000.0	3,960.8	4,005.0	3,986.4	12.6	10.3	-169.29	-88.2	-253.4	210.1	191.8	18.25	11.511		
4,100.0	4,059.3	4,104.9	4,085.5	13.0	10.7	-169.13	-92.0	-265.6	214.7	195.9	18.76	11.443		
4,200.0	4,157.8	4,204.8	4,184.6	13.4	11.0	-168.99	-95.8	-277.8	219.3	200.0	19.27	11.378		
4,300.0	4,256.4	4,304.7	4,283.7	13.8	11.3	-168.84	-99.5	-290.0	223.9	204.1	19.79	11.316		
4,400.0	4,354.9	4,404.5	4,382.7	14.2	11.6	-168.71	-103.3	-302.2	228.5	208.2	20.30	11.256		
4,500.0	4,453.4	4,504.4	4,481.8	14.6	11.9	-168.58	-107.1	-314.3	233.1	212.3	20.82	11.199		
4,600.0	4,552.0	4,604.3	4,580.9	15.0	12.3	-168.45	-110.9	-326.5	237.7	216.4	21.33	11.144		
4,700.0	4,650.5	4,704.2	4,680.0	15.4	12.6	-168.33	-114.7	-338.7	242.4	220.5	21.85	11.091		
4,800.0	4,749.0	4,804.1	4,779.0	15.8	12.9	-168.22	-118.4	-350.9	247.0	224.6	22.37	11.041		
4,900.0	4,847.6	4,904.0	4,878.1	16.2	13.2	-168.11	-122.2	-363.1	251.6	228.7	22.89	10.992		
5,000.0	4,946.1	5,003.9	4,977.2	16.6	13.6	-168.00	-126.0	-375.3	256.2	232.8	23.41	10.945		
5,100.0	5,044.6	5,103.8	5,076.2	17.0	13.9	-167.89	-129.8	-387.5	260.8	236.9	23.93	10.900		
5,200.0	5,143.2	5,203.7	5,175.3	17.4	14.2	-167.79	-133.5	-399.7	265.4	241.0	24.45	10.857		
5,300.0	5,241.7	5,303.6	5,274.4	17.8	14.6	-167.70	-137.3	-411.9	270.1	245.1	24.97	10.815		
5,400.0	5,340.2	5,403.5	5,373.5	18.2	14.9	-167.60	-141.1	-424.1	274.7	249.2	25.49	10.775		
5,500.0	5,438.8	5,500.0	5,469.2	18.6	15.2	-167.53	-144.7	-435.7	279.5	253.5	26.00	10.753		
5,600.0	5,537.3	5,591.3	5,560.0	19.0	15.4	-167.62	-147.4	-444.3	286.8	260.4	26.43	10.852		
5,674.8	5,611.0	5,659.1	5,627.7	19.3	15.5	-167.80	-148.8	-449.0	294.2	267.5	26.74	11.004		
5,700.0	5,635.8	5,682.0	5,650.5	19.3	15.6	-167.89	-149.2	-450.2	297.0	270.2	26.84	11.065		
5,800.0	5,734.8	5,772.3	5,740.8	19.6	15.7	-168.25	-150.2	-453.4	307.8	280.6	27.20	11.315		
5,900.0	5,834.2	5,865.7	5,834.2	19.8	15.9	-168.64	-150.4	-454.0	317.9	290.4	27.53	11.549		
6,000.0	5,933.9	5,965.4	5,933.9	20.0	16.0	-168.93	-150.4	-454.0	325.3	297.5	27.85	11.682		
6,100.0	6,033.8	6,065.3	6,033.8	20.2	16.2	-169.08	-150.4	-454.0	329.3	301.1	28.14	11.700		
6,166.2	6,100.0	6,131.5	6,100.0	20.3	16.3	90.06	-150.4	-454.0	330.0	301.7	28.34	11.647		
6,200.0	6,133.8	6,165.3	6,133.8	20.3	16.4	90.06	-150.4	-454.0	330.0	301.6	28.46	11.595		
6,300.0	6,233.8	6,265.3	6,233.8	20.5	16.5	90.06	-150.4	-454.0	330.0	301.2	28.84	11.443		
6,400.0	6,333.8	6,365.3	6,333.8	20.6	16.7	90.06	-150.4	-454.0	330.0	300.8	29.22	11.295		
6,450.0	6,383.8	6,415.3	6,383.8	20.7	16.8	90.06	-150.4	-454.0	330.0	300.6	29.41	11.222		

CC - Min centre to center distance or convergent point, SF - min separation factor, ES - min ellipse separation

Company:	Synergy Resources	Local Co-ordinate Reference:	Well SRC Weld 152 12-10-3NHZ
Project:	SEC.10-T6N-R67W	TVD Reference:	WELL @ 4861.0ft (Original Well Elev)
Reference Site:	SRC Weld 152 Pad Sec.10-T6N-R67W	MD Reference:	WELL @ 4861.0ft (Original Well Elev)
Site Error:	0.0ft	North Reference:	True
Reference Well:	SRC Weld 152 12-10-3NHZ	Survey Calculation Method:	Minimum Curvature
Well Error:	0.0ft	Output errors are at	2.00 sigma
Reference Wellbore	Wellbore #1	Database:	Landmark
Reference Design:	Plan #2 (10-17-13)	Offset TVD Reference:	Offset Datum

Offset Design												Offset Site Error:	0.0 ft
Survey Program: 0-MWD												Offset Well Error:	0.0 ft
Reference		Offset		Semi Major Axis			Distance						Warning
Measured Depth (ft)	Vertical Depth (ft)	Measured Depth (ft)	Vertical Depth (ft)	Reference (ft)	Offset (ft)	Highside Toolface (°)	Offset Wellbore Centre +N/-S (ft)	+E/-W (ft)	Between Centres (ft)	Between Ellipses (ft)	Minimum Separation (ft)	Separation Factor	
6,450.2	6,384.0	6,415.5	6,384.0	20.7	16.8	90.06	-150.4	-454.0	330.0	300.6	29.41	11.222	
6,500.0	6,433.7	6,465.2	6,433.7	20.7	16.9	90.41	-150.4	-454.0	330.0	300.4	29.62	11.144	
6,550.0	6,483.5	6,515.0	6,483.5	20.8	17.0	91.30	-150.4	-454.0	330.1	300.3	29.87	11.053	
6,600.0	6,532.7	6,564.2	6,532.7	20.8	17.1	92.76	-150.4	-454.0	330.4	300.3	30.16	10.955	
6,650.0	6,581.2	6,614.2	6,582.7	20.9	17.1	94.62	-149.3	-454.0	331.2	300.7	30.49	10.862	
6,700.0	6,628.7	6,665.3	6,633.6	20.9	17.2	96.48	-144.7	-454.0	332.3	301.5	30.79	10.791	
6,750.0	6,675.1	6,717.3	6,684.8	21.0	17.3	98.32	-136.3	-454.0	333.7	302.7	31.06	10.746	
6,800.0	6,720.0	6,770.1	6,736.2	21.0	17.4	100.12	-124.0	-454.0	335.5	304.2	31.27	10.728	
6,850.0	6,763.3	6,823.9	6,787.5	21.0	17.4	101.87	-107.6	-454.0	337.6	306.1	31.44	10.736	
6,900.0	6,804.8	6,878.7	6,838.2	21.1	17.5	103.56	-87.1	-454.0	339.9	308.3	31.56	10.769	
6,950.0	6,844.2	6,934.4	6,888.0	21.1	17.5	105.17	-62.2	-454.0	342.4	310.8	31.64	10.824	
7,000.0	6,881.3	6,991.1	6,936.6	21.1	17.6	106.70	-33.0	-454.1	345.1	313.4	31.68	10.893	
7,050.0	6,916.0	7,048.7	6,983.5	21.2	17.6	108.15	0.5	-454.1	347.8	316.1	31.71	10.970	
7,100.0	6,948.2	7,107.3	7,028.2	21.3	17.7	109.48	38.3	-454.1	350.6	318.9	31.74	11.047	
7,150.0	6,977.5	7,166.9	7,070.4	21.3	17.7	110.71	80.4	-454.1	353.4	321.5	31.83	11.100	
7,200.0	7,004.0	7,227.3	7,109.4	21.4	17.8	111.83	126.5	-454.2	356.0	324.0	31.98	11.133	
7,250.0	7,027.5	7,288.6	7,144.9	21.6	17.9	112.82	176.4	-454.2	358.4	326.2	32.22	11.125	
7,300.0	7,047.8	7,350.7	7,176.3	21.7	18.1	113.67	229.9	-454.3	360.7	328.1	32.59	11.066	
7,350.0	7,064.9	7,413.4	7,203.3	21.9	18.4	114.40	286.5	-454.3	362.6	329.5	33.13	10.945	
7,400.0	7,078.7	7,476.7	7,225.4	22.1	18.7	114.98	345.8	-454.4	364.2	330.4	33.84	10.762	
7,450.0	7,089.1	7,540.5	7,242.2	22.4	19.1	115.42	407.3	-454.4	365.5	330.7	34.74	10.521	
7,500.0	7,096.1	7,604.6	7,253.6	22.7	19.6	115.71	470.4	-454.4	366.3	330.5	35.82	10.227	
7,550.0	7,099.6	7,668.9	7,259.3	23.1	20.2	115.85	534.4	-454.5	366.7	329.6	37.08	9.889	
7,575.0	7,100.0	7,700.9	7,260.0	23.3	20.5	115.86	566.5	-454.5	366.8	329.0	37.77	9.710	
7,600.0	7,100.0	7,725.9	7,260.0	23.5	20.8	115.86	591.4	-454.5	366.8	328.5	38.30	9.576	
7,700.0	7,100.0	7,825.9	7,260.0	24.4	21.9	115.86	691.4	-454.6	366.8	326.3	40.51	9.054	
7,800.0	7,100.0	7,925.9	7,260.0	25.4	23.2	115.86	791.4	-454.7	366.8	323.9	42.90	8.551	
7,900.0	7,100.0	8,025.9	7,260.0	26.6	24.5	115.86	891.4	-454.8	366.8	321.3	45.43	8.074	
8,000.0	7,100.0	8,125.9	7,260.0	27.9	25.9	115.86	991.4	-454.9	366.8	318.7	48.08	7.628	
8,100.0	7,100.0	8,225.9	7,260.0	29.2	27.4	115.86	1,091.4	-454.9	366.8	315.9	50.85	7.213	
8,200.0	7,100.0	8,325.9	7,260.0	30.6	28.9	115.86	1,191.4	-455.0	366.8	313.1	53.70	6.831	
8,300.0	7,100.0	8,425.9	7,260.0	32.1	30.5	115.86	1,291.4	-455.1	366.8	310.2	56.62	6.478	
8,400.0	7,100.0	8,525.9	7,260.0	33.6	32.1	115.86	1,391.4	-455.2	366.8	307.2	59.61	6.153	
8,500.0	7,100.0	8,625.9	7,260.0	35.2	33.8	115.86	1,491.4	-455.2	366.8	304.1	62.66	5.854	
8,600.0	7,100.0	8,725.9	7,260.0	36.8	35.4	115.86	1,591.4	-455.3	366.8	301.0	65.75	5.578	
8,700.0	7,100.0	8,825.9	7,260.0	38.4	37.1	115.86	1,691.4	-455.4	366.8	297.9	68.88	5.325	
8,800.0	7,100.0	8,925.9	7,260.0	40.1	38.8	115.86	1,791.4	-455.5	366.8	294.7	72.05	5.090	
8,900.0	7,100.0	9,025.9	7,260.0	41.8	40.6	115.86	1,891.4	-455.6	366.8	291.5	75.25	4.874	
9,000.0	7,100.0	9,125.9	7,260.0	43.5	42.3	115.86	1,991.4	-455.6	366.8	288.3	78.48	4.674	
9,100.0	7,100.0	9,225.9	7,260.0	45.2	44.1	115.86	2,091.4	-455.7	366.8	285.0	81.73	4.488	
9,200.0	7,100.0	9,325.9	7,260.0	46.9	45.9	115.86	2,191.4	-455.8	366.8	281.8	85.00	4.315	
9,300.0	7,100.0	9,425.9	7,260.0	48.7	47.7	115.86	2,291.4	-455.9	366.8	278.5	88.30	4.154	
9,400.0	7,100.0	9,525.9	7,260.0	50.4	49.5	115.86	2,391.4	-455.9	366.8	275.2	91.60	4.004	
9,500.0	7,100.0	9,625.9	7,260.0	52.2	51.3	115.86	2,491.4	-456.0	366.8	271.9	94.93	3.864	
9,600.0	7,100.0	9,725.9	7,260.0	54.0	53.1	115.86	2,591.4	-456.1	366.8	268.5	98.27	3.733	
9,700.0	7,100.0	9,825.9	7,260.0	55.8	54.9	115.86	2,691.4	-456.2	366.8	265.2	101.62	3.609	
9,800.0	7,100.0	9,925.9	7,260.0	57.6	56.7	115.86	2,791.4	-456.3	366.8	261.8	104.98	3.494	
9,900.0	7,100.0	10,025.9	7,260.0	59.4	58.6	115.86	2,891.4	-456.3	366.8	258.4	108.35	3.385	
10,000.0	7,100.0	10,125.9	7,260.0	61.2	60.4	115.86	2,991.4	-456.4	366.8	255.1	111.73	3.283	
10,100.0	7,100.0	10,225.9	7,260.0	63.0	62.2	115.86	3,091.4	-456.5	366.8	251.7	115.12	3.186	
10,200.0	7,100.0	10,325.9	7,260.0	64.9	64.1	115.86	3,191.4	-456.6	366.8	248.3	118.51	3.095	
10,300.0	7,100.0	10,425.9	7,260.0	66.7	66.0	115.86	3,291.4	-456.6	366.8	244.9	121.92	3.009	

CC - Min centre to center distance or convergent point, SF - min separation factor, ES - min ellipse separation

Company:	Synergy Resources	Local Co-ordinate Reference:	Well SRC Weld 152 12-10-3NHZ
Project:	SEC.10-T6N-R67W	TVD Reference:	WELL @ 4861.0ft (Original Well Elev)
Reference Site:	SRC Weld 152 Pad Sec.10-T6N-R67W	MD Reference:	WELL @ 4861.0ft (Original Well Elev)
Site Error:	0.0ft	North Reference:	True
Reference Well:	SRC Weld 152 12-10-3NHZ	Survey Calculation Method:	Minimum Curvature
Well Error:	0.0ft	Output errors are at	2.00 sigma
Reference Wellbore	Wellbore #1	Database:	Landmark
Reference Design:	Plan #2 (10-17-13)	Offset TVD Reference:	Offset Datum

Offset Design												Offset Site Error:	0.0 ft
Survey Program: 0-MWD												Offset Well Error:	0.0 ft
Reference		Offset		Semi Major Axis			Distance						
Measured Depth (ft)	Vertical Depth (ft)	Measured Depth (ft)	Vertical Depth (ft)	Reference (ft)	Offset (ft)	Highside Toolface (°)	Offset Wellbore Centre +N/-S (ft)	+E/-W (ft)	Between Centres (ft)	Between Ellipses (ft)	Minimum Separation (ft)	Separation Factor	Warning
10,400.0	7,100.0	10,525.9	7,260.0	68.5	67.8	115.86	3,391.4	-456.7	366.8	241.5	125.32	2.927	
10,500.0	7,100.0	10,625.9	7,260.0	70.4	69.7	115.86	3,491.4	-456.8	366.8	238.0	128.74	2.849	
10,600.0	7,100.0	10,725.9	7,260.0	72.2	71.5	115.86	3,591.4	-456.9	366.8	234.6	132.16	2.775	
10,700.0	7,100.0	10,825.9	7,260.0	74.1	73.4	115.86	3,691.4	-456.9	366.8	231.2	135.59	2.705	
10,800.0	7,100.0	10,925.9	7,260.0	75.9	75.3	115.86	3,791.4	-457.0	366.8	227.8	139.02	2.638	
10,900.0	7,100.0	11,025.9	7,260.0	77.8	77.2	115.86	3,891.4	-457.1	366.8	224.3	142.45	2.575	
11,000.0	7,100.0	11,125.9	7,260.0	79.7	79.0	115.86	3,991.4	-457.2	366.8	220.9	145.89	2.514	
11,100.0	7,100.0	11,225.9	7,260.0	81.5	80.9	115.86	4,091.4	-457.3	366.8	217.5	149.33	2.456	
11,200.0	7,100.0	11,325.9	7,260.0	83.4	82.8	115.86	4,191.4	-457.3	366.8	214.0	152.78	2.401	
11,300.0	7,100.0	11,425.9	7,260.0	85.2	84.7	115.86	4,291.4	-457.4	366.8	210.6	156.23	2.348	
11,400.0	7,100.0	11,525.9	7,260.0	87.1	86.6	115.86	4,391.4	-457.5	366.8	207.1	159.68	2.297	
11,500.0	7,100.0	11,625.9	7,260.0	89.0	88.4	115.86	4,491.4	-457.6	366.8	203.7	163.14	2.248	
11,600.0	7,100.0	11,725.9	7,260.0	90.9	90.3	115.86	4,591.4	-457.6	366.8	200.2	166.59	2.202	
11,606.9	7,100.0	11,732.9	7,260.0	91.0	90.5	115.86	4,598.4	-457.7	366.8	200.0	166.83	2.199	
11,618.9	7,100.0	11,744.6	7,260.0	91.2	90.7	115.86	4,610.1	-457.7	366.8	199.5	167.24	2.193 SF	

Company:	Synergy Resources	Local Co-ordinate Reference:	Well SRC Weld 152 12-10-3NHZ
Project:	SEC.10-T6N-R67W	TVD Reference:	WELL @ 4861.0ft (Original Well Elev)
Reference Site:	SRC Weld 152 Pad Sec.10-T6N-R67W	MD Reference:	WELL @ 4861.0ft (Original Well Elev)
Site Error:	0.0ft	North Reference:	True
Reference Well:	SRC Weld 152 12-10-3NHZ	Survey Calculation Method:	Minimum Curvature
Well Error:	0.0ft	Output errors are at	2.00 sigma
Reference Wellbore	Wellbore #1	Database:	Landmark
Reference Design:	Plan #2 (10-17-13)	Offset TVD Reference:	Offset Datum

Offset Design SRC Weld 152 Pad Sec.10-T6N-R67W - SRC Weld 152 21-10-3CHZ - Wellbore #1 - Plan #2 (10-17-13)													Offset Site Error: 0.0 ft
Survey Program: 0-MWD													Offset Well Error: 0.0 ft
Reference	Offset	Semi Major Axis		Distance		Warning							
Measured Depth (ft)	Vertical Depth (ft)	Measured Depth (ft)	Vertical Depth (ft)	Reference (ft)	Offset (ft)	Highside Toolface (°)	Offset Wellbore Centre +N/-S (ft)	+E/-W (ft)	Between Centres (ft)	Between Ellipses (ft)	Minimum Separation (ft)	Separation Factor	
0.0	0.0	0.0	0.0	0.0	0.0	90.16	-0.4	130.2	130.2				
100.0	100.0	99.0	99.0	0.1	0.1	90.16	-0.4	130.2	130.2	129.9	0.22	581.959	
200.0	200.0	199.0	199.0	0.3	0.3	90.16	-0.4	130.2	130.2	129.5	0.67	193.664	
300.0	300.0	299.0	299.0	0.6	0.6	90.16	-0.4	130.2	130.2	129.0	1.12	116.043	
400.0	400.0	399.0	399.0	0.8	0.8	90.16	-0.4	130.2	130.2	128.6	1.57	82.840	
500.0	500.0	499.0	499.0	1.0	1.0	90.16	-0.4	130.2	130.2	128.1	2.02	64.411	
600.0	600.0	599.0	599.0	1.2	1.2	90.16	-0.4	130.2	130.2	127.7	2.47	52.689	
700.0	700.0	699.0	699.0	1.5	1.5	90.16	-0.4	130.2	130.2	127.2	2.92	44.577	
800.0	800.0	799.0	799.0	1.7	1.7	90.16	-0.4	130.2	130.2	126.8	3.37	38.629	
900.0	900.0	899.0	899.0	1.9	1.9	90.16	-0.4	130.2	130.2	126.3	3.82	34.082	
1,000.0	1,000.0	999.0	999.0	2.1	2.1	90.16	-0.4	130.2	130.2	125.9	4.27	30.493 CC, ES	
1,100.0	1,100.0	1,094.7	1,094.7	2.3	2.3	-168.99	-0.7	131.7	133.5	128.8	4.68	28.542	
1,200.0	1,199.8	1,189.7	1,189.6	2.5	2.5	-168.93	-1.7	136.3	143.4	138.4	5.06	28.337 SF	
1,300.0	1,299.5	1,283.5	1,283.0	2.8	2.7	-168.83	-3.4	143.8	160.0	154.5	5.45	29.335	
1,400.0	1,398.7	1,375.4	1,374.3	3.0	2.9	-168.72	-5.7	154.1	183.0	177.2	5.85	31.285	
1,491.4	1,489.0	1,461.3	1,459.4	3.2	3.2	-168.64	-8.3	165.8	209.0	202.8	6.22	33.626	
1,500.0	1,497.5	1,469.5	1,467.5	3.3	3.2	-168.65	-8.5	166.9	211.6	205.3	6.25	33.845	
1,600.0	1,596.0	1,564.9	1,562.0	3.6	3.4	-168.74	-11.4	179.9	241.7	235.0	6.67	36.226	
1,700.0	1,694.5	1,660.2	1,656.4	3.9	3.7	-168.81	-14.3	192.9	271.8	264.7	7.10	38.286	
1,800.0	1,793.1	1,755.6	1,750.8	4.2	4.0	-168.87	-17.2	206.0	301.8	294.3	7.53	40.069	
1,900.0	1,891.6	1,851.0	1,845.2	4.6	4.3	-168.91	-20.1	219.0	331.9	323.9	7.98	41.609	
2,000.0	1,990.1	1,946.3	1,939.7	4.9	4.6	-168.95	-23.0	232.0	362.0	353.6	8.42	42.969	
2,100.0	2,088.7	2,041.7	2,034.1	5.3	4.9	-168.98	-25.9	245.1	392.1	383.2	8.88	44.164	
2,200.0	2,187.2	2,137.1	2,128.5	5.6	5.2	-169.01	-28.8	258.1	422.2	412.8	9.34	45.221	
2,300.0	2,285.7	2,232.4	2,222.9	6.0	5.5	-169.03	-31.7	271.2	452.3	442.5	9.80	46.162	
2,400.0	2,384.3	2,327.8	2,317.4	6.4	5.8	-169.06	-34.5	284.2	482.3	472.1	10.26	47.003	
2,500.0	2,482.8	2,423.2	2,411.8	6.8	6.1	-169.07	-37.4	297.2	512.4	501.7	10.73	47.758	
2,600.0	2,581.3	2,518.5	2,506.2	7.1	6.4	-169.09	-40.3	310.3	542.5	531.3	11.20	48.440	
2,700.0	2,679.9	2,613.9	2,600.7	7.5	6.7	-169.11	-43.2	323.3	572.6	560.9	11.67	49.058	
2,800.0	2,778.4	2,709.3	2,695.1	7.9	7.1	-169.12	-46.1	336.3	602.7	590.5	12.15	49.620	
2,900.0	2,876.9	2,804.6	2,789.5	8.3	7.4	-169.13	-49.0	349.4	632.8	620.1	12.62	50.132	
3,000.0	2,975.5	2,900.0	2,883.9	8.7	7.7	-169.14	-51.9	362.4	662.9	649.8	13.10	50.602	
3,100.0	3,074.0	2,995.4	2,978.4	9.1	8.0	-169.15	-54.8	375.4	692.9	679.4	13.58	51.033	
3,200.0	3,172.5	3,090.7	3,072.8	9.5	8.4	-169.16	-57.7	388.5	723.0	709.0	14.06	51.430	
3,300.0	3,271.0	3,186.1	3,167.2	9.9	8.7	-169.17	-60.6	401.5	753.1	738.6	14.54	51.797	
3,400.0	3,369.6	3,281.5	3,261.7	10.2	9.0	-169.18	-63.5	414.5	783.2	768.2	15.02	52.137	
3,500.0	3,468.1	3,376.8	3,356.1	10.6	9.3	-169.19	-66.4	427.6	813.3	797.8	15.51	52.452	
3,600.0	3,566.6	3,472.2	3,450.5	11.0	9.7	-169.19	-69.3	440.6	843.4	827.4	15.99	52.746	
3,700.0	3,665.2	3,567.6	3,544.9	11.4	10.0	-169.20	-72.1	453.6	873.4	857.0	16.47	53.019	
3,800.0	3,763.7	3,663.0	3,639.4	11.8	10.3	-169.20	-75.0	466.7	903.5	886.6	16.96	53.275	
3,900.0	3,862.2	3,758.3	3,733.8	12.2	10.6	-169.21	-77.9	479.7	933.6	916.2	17.45	53.515	
4,000.0	3,960.8	3,853.7	3,828.2	12.6	11.0	-169.21	-80.8	492.8	963.7	945.8	17.93	53.739	
4,100.0	4,059.3	3,949.1	3,922.6	13.0	11.3	-169.22	-83.7	505.8	993.8	975.4	18.42	53.950	

Offset Design SRC Weld 152 Pad Sec.10-T6N-R67W - SRC Weld 152 22-10-3NHZ - Wellbore #1 - Plan #2 (10-17-13)													Offset Site Error:	0.0 ft
Survey Program: 0-MWD													Offset Well Error:	0.0 ft
Reference		Offset		Semi Major Axis			Distance						Warning	
Measured Depth Depth (ft)	Vertical Depth Depth (ft)	Measured Depth Depth (ft)	Vertical Depth Depth (ft)	Reference (ft)	Offset (ft)	Highside Toolface (^)	Offset Wellbore Centre +N/-S (ft)	+E/-W (ft)	Between Centres (ft)	Between Ellipses (ft)	Minimum Separation (ft)	Separation Factor		
0.0	0.0	0.0	0.0	0.0	0.0	90.19	-0.4	110.1	110.1					
100.0	100.0	100.0	100.0	0.1	0.1	90.19	-0.4	110.1	110.1	109.9	0.22	489.969		
200.0	200.0	200.0	200.0	0.3	0.3	90.19	-0.4	110.1	110.1	109.5	0.67	163.323		
300.0	300.0	300.0	300.0	0.6	0.6	90.19	-0.4	110.1	110.1	109.0	1.12	97.994		
400.0	400.0	400.0	400.0	0.8	0.8	90.19	-0.4	110.1	110.1	108.6	1.57	69.996		
500.0	500.0	500.0	500.0	1.0	1.0	90.19	-0.4	110.1	110.1	108.1	2.02	54.441		
600.0	600.0	600.0	600.0	1.2	1.2	90.19	-0.4	110.1	110.1	107.7	2.47	44.543		
700.0	700.0	700.0	700.0	1.5	1.5	90.19	-0.4	110.1	110.1	107.2	2.92	37.690		
800.0	800.0	800.0	800.0	1.7	1.7	90.19	-0.4	110.1	110.1	106.8	3.37	32.665		
900.0	900.0	900.0	900.0	1.9	1.9	90.19	-0.4	110.1	110.1	106.3	3.82	28.822		
1,000.0	1,000.0	1,000.0	1,000.0	2.1	2.1	90.19	-0.4	110.1	110.1	105.9	4.27	25.788	CC, ES	
1,100.0	1,100.0	1,100.0	1,100.0	2.3	2.4	-169.14	-0.4	110.1	111.8	107.1	4.70	23.783		
1,200.0	1,199.8	1,199.8	1,199.8	2.5	2.6	-169.61	-0.4	110.1	117.0	111.9	5.12	22.854		
1,300.0	1,299.5	1,299.5	1,299.5	2.8	2.8	-170.30	-0.4	110.1	125.6	120.0	5.54	22.685	SF	
1,400.0	1,398.7	1,398.7	1,398.7	3.0	3.0	-171.11	-0.4	110.1	137.6	131.6	5.95	23.124		
1,491.4	1,489.0	1,489.0	1,489.0	3.2	3.2	-171.90	-0.4	110.1	151.6	145.3	6.33	23.959		
1,500.0	1,497.5	1,497.5	1,497.5	3.3	3.3	-171.98	-0.4	110.1	153.1	146.7	6.37	24.046		
1,600.0	1,596.0	1,596.0	1,596.0	3.6	3.5	-172.78	-0.4	110.1	170.0	163.2	6.80	24.989		
1,700.0	1,694.5	1,689.4	1,689.4	3.9	3.7	-173.20	-0.9	111.4	188.2	181.0	7.22	26.077		
1,800.0	1,793.1	1,781.5	1,781.4	4.2	3.8	-173.15	-2.7	115.4	209.3	201.7	7.63	27.442		
1,900.0	1,891.6	1,872.4	1,872.0	4.6	4.0	-172.75	-5.6	121.9	233.1	225.0	8.04	28.995		
2,000.0	1,990.1	1,962.0	1,961.0	4.9	4.2	-172.14	-9.7	131.0	259.6	251.1	8.46	30.695		
2,100.0	2,088.7	2,057.2	2,055.4	5.3	4.4	-171.43	-14.7	142.2	287.7	278.8	8.89	32.362		
2,200.0	2,187.2	2,153.1	2,150.5	5.6	4.7	-170.85	-19.7	153.5	315.9	306.6	9.33	33.864		
2,300.0	2,285.7	2,249.0	2,245.6	6.0	4.9	-170.36	-24.8	164.8	344.1	334.3	9.77	35.211		
2,400.0	2,384.3	2,344.9	2,340.7	6.4	5.2	-169.95	-29.8	176.1	372.3	362.1	10.23	36.412		
2,500.0	2,482.8	2,440.8	2,435.8	6.8	5.4	-169.59	-34.8	187.4	400.6	389.9	10.68	37.505		
2,600.0	2,581.3	2,536.7	2,530.9	7.1	5.7	-169.28	-39.9	198.7	428.8	417.7	11.14	38.491		
2,700.0	2,679.9	2,632.6	2,626.0	7.5	6.0	-169.01	-44.9	210.0	457.1	445.5	11.61	39.385		
2,800.0	2,778.4	2,728.5	2,721.1	7.9	6.2	-168.77	-50.0	221.3	485.3	473.3	12.07	40.199		
2,900.0	2,876.9	2,824.4	2,816.2	8.3	6.5	-168.56	-55.0	232.5	513.6	501.1	12.54	40.942		
3,000.0	2,975.5	2,920.3	2,911.3	8.7	6.8	-168.37	-60.1	243.8	541.9	528.9	13.02	41.623		
3,100.0	3,074.0	3,016.2	3,006.4	9.1	7.1	-168.19	-65.1	255.1	570.2	556.7	13.50	42.248		
3,200.0	3,172.5	3,112.1	3,101.5	9.5	7.4	-168.04	-70.1	266.4	598.5	584.5	13.98	42.823		
3,300.0	3,271.0	3,208.0	3,196.6	9.9	7.7	-167.90	-75.2	277.7	626.8	612.3	14.46	43.355		
3,400.0	3,369.6	3,303.9	3,291.7	10.2	8.0	-167.77	-80.2	289.0	655.1	640.1	14.94	43.847		
3,500.0	3,468.1	3,399.8	3,386.9	10.6	8.3	-167.65	-85.3	300.3	683.4	667.9	15.42	44.303		
3,600.0	3,566.6	3,495.7	3,482.0	11.0	8.6	-167.54	-90.3	311.6	711.7	695.7	15.91	44.727		
3,700.0	3,665.2	3,591.6	3,577.1	11.4	8.9	-167.44	-95.4	322.9	740.0	723.6	16.40	45.122		
3,800.0	3,763.7	3,687.5	3,672.2	11.8	9.2	-167.35	-100.4	334.2	768.3	751.4	16.89	45.491		
3,900.0	3,862.2	3,783.4	3,767.3	12.2	9.5	-167.26	-105.4	345.5	796.6	779.2	17.38	45.836		
4,000.0	3,960.8	3,879.3	3,862.4	12.6	9.8	-167.18	-110.5	356.8	824.9	807.0	17.87	46.159		
4,100.0	4,059.3	3,975.2	3,957.5	13.0	10.1	-167.10	-115.5	368.1	853.2	834.8	18.36	46.462		
4,200.0	4,157.8	4,071.1	4,052.6	13.4	10.4	-167.03	-120.6	379.4	881.5	862.7	18.86	46.747		
4,300.0	4,256.4	4,167.0	4,147.7	13.8	10.7	-166.97	-125.6	390.7	909.8	890.5	19.35	47.016		
4,400.0	4,354.9	4,263.0	4,242.8	14.2	11.0	-166.90	-130.7	402.0	938.1	918.3	19.85	47.269		
4,500.0	4,453.4	4,358.9	4,337.9	14.6	11.3	-166.85	-135.7	413.3	966.5	946.1	20.34	47.508		
4,600.0	4,552.0	4,455.9	4,434.2	15.0	11.6	-166.79	-140.8	424.7	994.8	973.9	20.84	47.730		

Company:	Synergy Resources	Local Co-ordinate Reference:	Well SRC Weld 152 12-10-3NHZ
Project:	SEC.10-T6N-R67W	TVD Reference:	WELL @ 4861.0ft (Original Well Elev)
Reference Site:	SRC Weld 152 Pad Sec.10-T6N-R67W	MD Reference:	WELL @ 4861.0ft (Original Well Elev)
Site Error:	0.0ft	North Reference:	True
Reference Well:	SRC Weld 152 12-10-3NHZ	Survey Calculation Method:	Minimum Curvature
Well Error:	0.0ft	Output errors are at	2.00 sigma
Reference Wellbore	Wellbore #1	Database:	Landmark
Reference Design:	Plan #2 (10-17-13)	Offset TVD Reference:	Offset Datum

Offset Design													Offset Site Error:	0.0 ft
Survey Program: 0-MWD													Offset Well Error:	0.0 ft
Reference		Offset		Semi Major Axis			Distance							Warning
Measured Depth (ft)	Vertical Depth (ft)	Measured Depth (ft)	Vertical Depth (ft)	Reference (ft)	Offset (ft)	Highside Toolface (°)	Offset Wellbore Centre +N/-S (ft)	+E/-W (ft)	Between Centres (ft)	Between Ellipses (ft)	Minimum Separation (ft)	Separation Factor		
0.0	0.0	0.0	0.0	0.0	0.0	90.42	-0.4	50.1	50.1					
100.0	100.0	100.0	100.0	0.1	0.1	90.42	-0.4	50.1	50.1	49.8	0.22	222.718		
200.0	200.0	200.0	200.0	0.3	0.3	90.42	-0.4	50.1	50.1	49.4	0.67	74.239		
300.0	300.0	300.0	300.0	0.6	0.6	90.42	-0.4	50.1	50.1	48.9	1.12	44.544		
400.0	400.0	400.0	400.0	0.8	0.8	90.42	-0.4	50.1	50.1	48.5	1.57	31.817		
500.0	500.0	500.0	500.0	1.0	1.0	90.42	-0.4	50.1	50.1	48.0	2.02	24.746		
600.0	600.0	600.0	600.0	1.2	1.2	90.42	-0.4	50.1	50.1	47.6	2.47	20.247		
700.0	700.0	700.0	700.0	1.5	1.5	90.42	-0.4	50.1	50.1	47.1	2.92	17.132		
800.0	800.0	800.0	800.0	1.7	1.7	90.42	-0.4	50.1	50.1	46.7	3.37	14.848		
900.0	900.0	900.0	900.0	1.9	1.9	90.42	-0.4	50.1	50.1	46.2	3.82	13.101		
1,000.0	1,000.0	1,000.0	1,000.0	2.1	2.1	90.42	-0.4	50.1	50.1	45.8	4.27	11.722 CC, ES		
1,100.0	1,100.0	1,100.0	1,100.0	2.3	2.4	-169.12	-0.4	50.1	51.8	47.1	4.70	11.009		
1,200.0	1,199.8	1,199.8	1,199.8	2.5	2.6	-170.10	-0.4	50.1	56.9	51.8	5.12	11.120		
1,300.0	1,299.5	1,299.5	1,299.5	2.8	2.8	-171.38	-0.4	50.1	65.5	60.0	5.54	11.838		
1,400.0	1,398.7	1,398.7	1,398.7	3.0	3.0	-172.70	-0.4	50.1	77.6	71.6	5.95	13.042		
1,491.4	1,489.0	1,489.0	1,489.0	3.2	3.2	-173.79	-0.4	50.1	91.7	85.3	6.33	14.489		
1,500.0	1,497.5	1,497.5	1,497.5	3.3	3.3	-173.89	-0.4	50.1	93.1	86.8	6.36	14.633		
1,600.0	1,596.0	1,596.0	1,596.0	3.6	3.5	-174.84	-0.4	50.1	110.1	103.3	6.80	16.192		
1,700.0	1,694.5	1,694.5	1,694.5	3.9	3.7	-175.53	-0.4	50.1	127.1	119.9	7.24	17.554		
1,800.0	1,793.1	1,793.1	1,793.1	4.2	3.9	-176.06	-0.4	50.1	144.2	136.5	7.69	18.752		
1,900.0	1,891.6	1,891.6	1,891.6	4.6	4.1	-176.17	-1.4	48.8	159.9	151.8	8.12	19.690		
2,000.0	1,990.1	2,000.3	2,000.1	4.9	4.3	-175.57	-4.9	44.8	172.7	164.2	8.54	20.225		
2,100.0	2,088.7	2,105.0	2,104.5	5.3	4.5	-174.36	-11.0	37.8	182.5	173.6	8.97	20.349		
2,200.0	2,187.2	2,207.2	2,205.9	5.6	4.7	-172.74	-18.9	28.5	189.9	180.5	9.41	20.174		
2,300.0	2,285.7	2,306.9	2,304.8	6.0	5.0	-171.20	-27.0	19.2	197.1	187.2	9.87	19.971		
2,400.0	2,384.3	2,406.5	2,403.6	6.4	5.2	-169.76	-35.0	9.9	204.4	194.1	10.34	19.771		
2,500.0	2,482.8	2,506.1	2,502.5	6.8	5.4	-168.43	-43.0	0.6	211.9	201.1	10.82	19.578		
2,600.0	2,581.3	2,605.7	2,601.3	7.1	5.7	-167.19	-51.1	-8.8	219.4	208.1	11.32	19.388		
2,700.0	2,679.9	2,705.3	2,700.1	7.5	5.9	-166.03	-59.1	-18.1	227.1	215.3	11.83	19.203		
2,800.0	2,778.4	2,804.9	2,799.0	7.9	6.2	-164.95	-67.2	-27.4	234.8	222.5	12.34	19.023		
2,900.0	2,876.9	2,904.5	2,897.8	8.3	6.5	-163.93	-75.2	-36.7	242.6	229.8	12.87	18.850		
3,000.0	2,975.5	3,004.1	2,996.7	8.7	6.8	-162.98	-83.2	-46.1	250.5	237.1	13.41	18.682		
3,100.0	3,074.0	3,103.7	3,095.5	9.1	7.0	-162.09	-91.3	-55.4	258.5	244.5	13.96	18.520		
3,200.0	3,172.5	3,203.3	3,194.4	9.5	7.3	-161.25	-99.3	-64.7	266.5	252.0	14.51	18.365		
3,300.0	3,271.0	3,302.9	3,293.2	9.9	7.6	-160.46	-107.3	-74.0	274.5	259.5	15.07	18.216		
3,400.0	3,369.6	3,402.5	3,392.0	10.2	7.9	-159.72	-115.4	-83.4	282.7	267.0	15.64	18.073		
3,500.0	3,468.1	3,502.1	3,490.9	10.6	8.2	-159.01	-123.4	-92.7	290.8	274.6	16.21	17.936		
3,600.0	3,566.6	3,601.7	3,589.7	11.0	8.5	-158.35	-131.5	-102.0	299.0	282.2	16.79	17.805		
3,700.0	3,665.2	3,698.7	3,686.0	11.4	8.8	-157.78	-139.1	-110.9	307.4	290.1	17.36	17.710		
3,800.0	3,763.7	3,791.9	3,778.8	11.8	9.0	-157.63	-144.8	-117.5	317.5	299.7	17.86	17.783		
3,900.0	3,862.2	3,884.7	3,871.4	12.2	9.2	-157.90	-148.5	-121.8	329.6	311.3	18.31	17.999		
4,000.0	3,960.8	3,976.9	3,963.5	12.6	9.4	-158.55	-150.2	-123.8	343.8	325.0	18.73	18.349		
4,100.0	4,059.3	4,072.6	4,059.3	13.0	9.5	-159.48	-150.4	-123.9	359.6	340.4	19.13	18.792		
4,200.0	4,157.8	4,171.2	4,157.8	13.4	9.7	-160.39	-150.4	-123.9	375.6	356.1	19.54	19.222		
4,300.0	4,256.4	4,269.7	4,256.4	13.8	9.9	-161.23	-150.4	-123.9	391.8	371.8	19.95	19.634		
4,400.0	4,354.9	4,368.2	4,354.9	14.2	10.1	-162.00	-150.4	-123.9	408.0	387.6	20.37	20.029		
4,500.0	4,453.4	4,466.8	4,453.4	14.6	10.3	-162.71	-150.4	-123.9	424.3	403.5	20.79	20.408		
4,600.0	4,552.0	4,565.3	4,552.0	15.0	10.5	-163.37	-150.4	-123.9	440.6	419.4	21.21	20.771		
4,700.0	4,650.5	4,663.8	4,650.5	15.4	10.7	-163.98	-150.4	-123.9	457.0	435.4	21.64	21.119		
4,800.0	4,749.0	4,762.4	4,749.0	15.8	10.9	-164.55	-150.4	-123.9	473.5	451.4	22.07	21.453		
4,900.0	4,847.6	4,860.9	4,847.6	16.2	11.1	-165.08	-150.4	-123.9	490.0	467.5	22.50	21.774		
5,000.0	4,946.1	4,959.4	4,946.1	16.6	11.3	-165.58	-150.4	-123.9	506.5	483.6	22.94	22.081		

CC - Min centre to center distance or convergent point, SF - min separation factor, ES - min ellipse separation

Company:	Synergy Resources	Local Co-ordinate Reference:	Well SRC Weld 152 12-10-3NHZ
Project:	SEC.10-T6N-R67W	TVD Reference:	WELL @ 4861.0ft (Original Well Elev)
Reference Site:	SRC Weld 152 Pad Sec.10-T6N-R67W	MD Reference:	WELL @ 4861.0ft (Original Well Elev)
Site Error:	0.0ft	North Reference:	True
Reference Well:	SRC Weld 152 12-10-3NHZ	Survey Calculation Method:	Minimum Curvature
Well Error:	0.0ft	Output errors are at	2.00 sigma
Reference Wellbore	Wellbore #1	Database:	Landmark
Reference Design:	Plan #2 (10-17-13)	Offset TVD Reference:	Offset Datum

Offset Design												Offset Site Error:	0.0 ft
Survey Program: 0-MWD												Offset Well Error:	0.0 ft
Reference		Offset		Semi Major Axis			Distance						
Measured Depth (ft)	Vertical Depth (ft)	Measured Depth (ft)	Vertical Depth (ft)	Reference (ft)	Offset (ft)	Highside Toolface (°)	Offset Wellbore Centre +N/-S (ft)	+E/-W (ft)	Between Centres (ft)	Between Ellipses (ft)	Minimum Separation (ft)	Separation Factor	Warning
5,100.0	5,044.6	5,058.0	5,044.6	17.0	11.5	-166.05	-150.4	-123.9	523.1	499.7	23.38	22.377	
5,200.0	5,143.2	5,156.5	5,143.2	17.4	11.7	-166.48	-150.4	-123.9	539.7	515.9	23.81	22.662	
5,300.0	5,241.7	5,255.0	5,241.7	17.8	11.9	-166.89	-150.4	-123.9	556.3	532.0	24.26	22.935	
5,400.0	5,340.2	5,353.6	5,340.2	18.2	12.1	-167.28	-150.4	-123.9	572.9	548.2	24.70	23.198	
5,500.0	5,438.8	5,452.1	5,438.8	18.6	12.3	-167.64	-150.4	-123.9	589.6	564.5	25.14	23.451	
5,600.0	5,537.3	5,550.6	5,537.3	19.0	12.5	-167.99	-150.4	-123.9	606.3	580.7	25.59	23.695	
5,674.8	5,611.0	5,624.3	5,611.0	19.3	12.6	-168.24	-150.4	-123.9	618.8	592.9	25.92	23.872	
5,700.0	5,635.8	5,649.2	5,635.8	19.3	12.7	-168.33	-150.4	-123.9	622.9	596.9	26.04	23.921	
5,800.0	5,734.8	5,748.1	5,734.8	19.6	12.9	-168.65	-150.4	-123.9	637.1	610.6	26.47	24.070	
5,900.0	5,834.2	5,847.5	5,834.2	19.8	13.1	-168.88	-150.4	-123.9	647.9	621.1	26.87	24.112	
6,000.0	5,933.9	5,947.2	5,933.9	20.0	13.3	-169.04	-150.4	-123.9	655.3	628.1	27.25	24.053	
6,100.0	6,033.8	6,047.1	6,033.8	20.2	13.5	-169.12	-150.4	-123.9	659.3	631.7	27.59	23.896	
6,166.2	6,100.0	6,113.3	6,100.0	20.3	13.6	90.03	-150.4	-123.9	660.1	632.2	27.81	23.734	
6,200.0	6,133.8	6,147.1	6,133.8	20.3	13.7	90.03	-150.4	-123.9	660.1	632.1	27.94	23.621	
6,300.0	6,233.8	6,247.1	6,233.8	20.5	13.9	90.03	-150.4	-123.9	660.1	631.7	28.34	23.291	
6,400.0	6,333.8	6,347.1	6,333.8	20.6	14.1	90.03	-150.4	-123.9	660.1	631.3	28.74	22.970	
6,450.0	6,383.8	6,397.1	6,383.8	20.7	14.2	90.03	-150.4	-123.9	660.1	631.1	28.93	22.812	
6,500.0	6,433.7	6,447.2	6,433.8	20.7	14.3	90.08	-148.6	-123.9	660.1	630.9	29.12	22.667	
6,550.0	6,483.5	6,497.3	6,483.6	20.8	14.4	90.08	-143.4	-123.9	660.1	630.8	29.29	22.539	
6,600.0	6,532.7	6,547.3	6,532.9	20.8	14.5	90.07	-134.7	-124.0	660.1	630.6	29.43	22.427	
6,650.0	6,581.2	6,597.4	6,581.4	20.9	14.6	90.07	-122.6	-124.0	660.1	630.5	29.56	22.329	
6,700.0	6,628.7	6,647.4	6,629.0	20.9	14.7	90.07	-107.1	-124.0	660.1	630.4	29.68	22.240	
6,750.0	6,675.1	6,697.5	6,675.4	21.0	14.7	90.07	-88.3	-124.0	660.1	630.3	29.79	22.155	
6,800.0	6,720.0	6,747.6	6,720.4	21.0	14.8	90.07	-66.3	-124.0	660.1	630.1	29.91	22.068	
6,850.0	6,763.3	6,797.6	6,763.7	21.0	14.8	90.06	-41.3	-124.0	660.1	630.0	30.04	21.972	
6,900.0	6,804.8	6,847.7	6,805.2	21.1	14.9	90.06	-13.3	-124.1	660.1	629.9	30.19	21.860	
6,950.0	6,844.2	6,897.7	6,844.6	21.1	15.0	90.06	17.6	-124.1	660.0	629.7	30.38	21.725	
7,000.0	6,881.3	6,947.8	6,881.8	21.1	15.0	90.05	51.1	-124.1	660.0	629.4	30.61	21.562	
7,050.0	6,916.0	6,997.8	6,916.5	21.2	15.1	90.05	87.1	-124.1	660.0	629.1	30.90	21.363	
7,100.0	6,948.2	7,047.8	6,948.6	21.3	15.2	90.05	125.4	-124.2	660.0	628.8	31.25	21.124	
7,150.0	6,977.5	7,097.9	6,978.0	21.3	15.4	90.04	166.0	-124.2	660.0	628.4	31.67	20.843	
7,200.0	7,004.0	7,147.9	7,004.4	21.4	15.7	90.04	208.4	-124.2	660.0	627.9	32.17	20.520	
7,250.0	7,027.5	7,197.9	7,027.9	21.6	16.0	90.03	252.6	-124.3	660.0	627.3	32.75	20.155	
7,300.0	7,047.8	7,248.0	7,048.2	21.7	16.3	90.03	298.3	-124.3	660.0	626.6	33.42	19.751	
7,350.0	7,064.9	7,298.0	7,065.2	21.9	16.7	90.02	345.3	-124.4	660.0	625.9	34.17	19.315	
7,400.0	7,078.7	7,348.0	7,078.9	22.1	17.2	90.02	393.4	-124.4	660.0	625.0	35.01	18.852	
7,450.0	7,089.1	7,398.0	7,089.3	22.4	17.6	90.01	442.3	-124.4	660.0	624.1	35.93	18.370	
7,500.0	7,096.1	7,448.0	7,096.2	22.7	18.1	90.01	491.9	-124.5	660.0	623.1	36.92	17.876	
7,550.0	7,099.6	7,498.0	7,099.6	23.1	18.7	90.00	541.7	-124.5	660.0	622.0	37.98	17.378	
7,575.0	7,100.0	7,523.1	7,100.0	23.3	19.0	90.00	566.7	-124.5	660.0	621.5	38.53	17.129	
7,600.0	7,100.0	7,548.0	7,100.0	23.5	19.3	90.00	591.7	-124.6	660.0	620.9	39.11	16.877	
7,700.0	7,100.0	7,648.0	7,100.0	24.4	20.5	90.00	691.7	-124.6	660.0	618.5	41.52	15.895	
7,800.0	7,100.0	7,748.0	7,100.0	25.4	21.8	90.00	791.7	-124.7	660.0	615.9	44.14	14.953	
7,900.0	7,100.0	7,848.0	7,100.0	26.6	23.2	90.00	891.7	-124.8	660.0	613.1	46.92	14.066	
8,000.0	7,100.0	7,948.0	7,100.0	27.9	24.7	90.00	991.7	-124.9	660.0	610.2	49.85	13.240	
8,100.0	7,100.0	8,048.0	7,100.0	29.2	26.2	90.00	1,091.7	-125.0	660.0	607.1	52.89	12.478	
8,200.0	7,100.0	8,148.0	7,100.0	30.6	27.8	90.00	1,191.7	-125.1	660.0	604.0	56.03	11.778	
8,300.0	7,100.0	8,248.0	7,100.0	32.1	29.4	90.00	1,291.7	-125.1	660.0	600.7	59.26	11.137	
8,400.0	7,100.0	8,348.0	7,100.0	33.6	31.1	90.00	1,391.7	-125.2	660.0	597.4	62.56	10.550	
8,500.0	7,100.0	8,448.0	7,100.0	35.2	32.8	90.00	1,491.7	-125.3	660.0	594.1	65.91	10.013	
8,600.0	7,100.0	8,548.0	7,100.0	36.8	34.5	90.00	1,591.7	-125.4	660.0	590.7	69.32	9.521	
8,700.0	7,100.0	8,648.0	7,100.0	38.4	36.2	90.00	1,691.7	-125.5	660.0	587.2	72.77	9.069	

CC - Min centre to center distance or convergent point, SF - min separation factor, ES - min ellipse separation

Company:	Synergy Resources	Local Co-ordinate Reference:	Well SRC Weld 152 12-10-3NHZ
Project:	SEC.10-T6N-R67W	TVD Reference:	WELL @ 4861.0ft (Original Well Elev)
Reference Site:	SRC Weld 152 Pad Sec.10-T6N-R67W	MD Reference:	WELL @ 4861.0ft (Original Well Elev)
Site Error:	0.0ft	North Reference:	True
Reference Well:	SRC Weld 152 12-10-3NHZ	Survey Calculation Method:	Minimum Curvature
Well Error:	0.0ft	Output errors are at	2.00 sigma
Reference Wellbore	Wellbore #1	Database:	Landmark
Reference Design:	Plan #2 (10-17-13)	Offset TVD Reference:	Offset Datum

Offset Design												Offset Site Error:	0.0 ft
Survey Program: 0-MWD												Offset Well Error:	0.0 ft
Reference		Offset		Semi Major Axis			Distance						Warning
Measured Depth (ft)	Vertical Depth (ft)	Measured Depth (ft)	Vertical Depth (ft)	Reference (ft)	Offset (ft)	Highside Toolface (°)	Offset Wellbore Centre +N/-S (ft)	+E/-W (ft)	Between Centres (ft)	Between Ellipses (ft)	Minimum Separation (ft)	Separation Factor	
8,800.0	7,100.0	8,748.0	7,100.0	40.1	38.0	90.00	1,791.7	-125.6	660.0	583.7	76.26	8.654	
8,900.0	7,100.0	8,848.0	7,100.0	41.8	39.8	90.00	1,891.7	-125.6	660.0	580.2	79.78	8.272	
9,000.0	7,100.0	8,948.0	7,100.0	43.5	41.5	90.00	1,991.7	-125.7	660.0	576.6	83.33	7.920	
9,100.0	7,100.0	9,048.0	7,100.0	45.2	43.3	90.00	2,091.7	-125.8	659.9	573.0	86.91	7.594	
9,200.0	7,100.0	9,148.0	7,100.0	46.9	45.1	90.00	2,191.7	-125.9	659.9	569.4	90.51	7.292	
9,300.0	7,100.0	9,248.0	7,100.0	48.7	46.9	90.00	2,291.7	-126.0	659.9	565.8	94.12	7.011	
9,400.0	7,100.0	9,348.0	7,100.0	50.4	48.8	90.00	2,391.7	-126.1	659.9	562.2	97.76	6.751	
9,500.0	7,100.0	9,448.0	7,100.0	52.2	50.6	90.00	2,491.7	-126.1	659.9	558.5	101.41	6.508	
9,600.0	7,100.0	9,548.0	7,100.0	54.0	52.4	90.00	2,591.7	-126.2	659.9	554.8	105.07	6.281	
9,700.0	7,100.0	9,648.0	7,100.0	55.8	54.3	90.00	2,691.7	-126.3	659.9	551.2	108.75	6.068	
9,800.0	7,100.0	9,748.0	7,100.0	57.6	56.1	90.00	2,791.7	-126.4	659.9	547.5	112.44	5.869	
9,900.0	7,100.0	9,848.0	7,100.0	59.4	58.0	90.00	2,891.7	-126.5	659.9	543.8	116.14	5.682	
10,000.0	7,100.0	9,948.0	7,100.0	61.2	59.8	90.00	2,991.7	-126.5	659.9	540.1	119.85	5.506	
10,100.0	7,100.0	10,048.0	7,100.0	63.0	61.7	90.00	3,091.7	-126.6	659.9	536.3	123.56	5.341	
10,200.0	7,100.0	10,148.0	7,100.0	64.9	63.6	90.00	3,191.7	-126.7	659.9	532.6	127.29	5.184	
10,300.0	7,100.0	10,248.0	7,100.0	66.7	65.4	90.00	3,291.7	-126.8	659.9	528.9	131.02	5.037	
10,400.0	7,100.0	10,348.0	7,100.0	68.5	67.3	90.00	3,391.7	-126.9	659.9	525.1	134.76	4.897	
10,500.0	7,100.0	10,448.0	7,100.0	70.4	69.2	90.00	3,491.7	-127.0	659.9	521.4	138.50	4.764	
10,600.0	7,100.0	10,548.0	7,100.0	72.2	71.0	90.00	3,591.7	-127.0	659.9	517.6	142.25	4.639	
10,700.0	7,100.0	10,648.0	7,100.0	74.1	72.9	90.00	3,691.7	-127.1	659.9	513.9	146.01	4.519	
10,800.0	7,100.0	10,748.0	7,100.0	75.9	74.8	90.00	3,791.7	-127.2	659.9	510.1	149.77	4.406	
10,900.0	7,100.0	10,848.0	7,100.0	77.8	76.7	90.00	3,891.7	-127.3	659.9	506.3	153.53	4.298	
11,000.0	7,100.0	10,948.0	7,100.0	79.7	78.6	90.00	3,991.7	-127.4	659.9	502.6	157.30	4.195	
11,100.0	7,100.0	11,048.0	7,100.0	81.5	80.5	90.00	4,091.7	-127.5	659.8	498.8	161.07	4.097	
11,200.0	7,100.0	11,148.0	7,100.0	83.4	82.4	90.00	4,191.7	-127.5	659.8	495.0	164.84	4.003	
11,300.0	7,100.0	11,248.0	7,100.0	85.2	84.2	90.00	4,291.7	-127.6	659.8	491.2	168.62	3.913	
11,400.0	7,100.0	11,348.0	7,100.0	87.1	86.1	90.00	4,391.7	-127.7	659.8	487.4	172.40	3.827	
11,500.0	7,100.0	11,448.0	7,100.0	89.0	88.0	90.00	4,491.7	-127.8	659.8	483.6	176.19	3.745	
11,600.0	7,100.0	11,548.0	7,100.0	90.9	89.9	90.00	4,591.7	-127.9	659.8	479.8	179.97	3.666	
11,614.0	7,100.0	11,562.1	7,100.0	91.1	90.2	90.00	4,605.7	-127.9	659.8	479.3	180.50	3.655	
11,618.9	7,100.0	11,566.8	7,100.0	91.2	90.3	90.00	4,610.5	-127.9	659.8	479.1	180.69	3.652 SF	

Company:	Synergy Resources	Local Co-ordinate Reference:	Well SRC Weld 152 12-10-3NHZ
Project:	SEC.10-T6N-R67W	TVD Reference:	WELL @ 4861.0ft (Original Well Elev)
Reference Site:	SRC Weld 152 Pad Sec.10-T6N-R67W	MD Reference:	WELL @ 4861.0ft (Original Well Elev)
Site Error:	0.0ft	North Reference:	True
Reference Well:	SRC Weld 152 12-10-3NHZ	Survey Calculation Method:	Minimum Curvature
Well Error:	0.0ft	Output errors are at	2.00 sigma
Reference Wellbore	Wellbore #1	Database:	Landmark
Reference Design:	Plan #2 (10-17-13)	Offset TVD Reference:	Offset Datum

Offset Design													Offset Site Error:	0.0 ft
Survey Program: 0-MWD													Offset Well Error:	0.0 ft
Reference		Offset		Semi Major Axis			Distance							Warning
Measured Depth (ft)	Vertical Depth (ft)	Measured Depth (ft)	Vertical Depth (ft)	Reference (ft)	Offset (ft)	Highside Toolface (°)	Offset Wellbore Centre +N/-S (ft)	+E/-W (ft)	Between Centres (ft)	Between Ellipses (ft)	Minimum Separation (ft)	Separation Factor		
0.0	0.0	0.0	0.0	0.0	0.0	90.26	-0.4	80.1	80.1					
100.0	100.0	100.0	100.0	0.1	0.1	90.26	-0.4	80.1	80.1	79.9	0.22	356.343		
200.0	200.0	200.0	200.0	0.3	0.3	90.26	-0.4	80.1	80.1	79.4	0.67	118.781		
300.0	300.0	300.0	300.0	0.6	0.6	90.26	-0.4	80.1	80.1	79.0	1.12	71.269		
400.0	400.0	400.0	400.0	0.8	0.8	90.26	-0.4	80.1	80.1	78.5	1.57	50.906		
500.0	500.0	500.0	500.0	1.0	1.0	90.26	-0.4	80.1	80.1	78.1	2.02	39.594		
600.0	600.0	600.0	600.0	1.2	1.2	90.26	-0.4	80.1	80.1	77.6	2.47	32.395		
700.0	700.0	700.0	700.0	1.5	1.5	90.26	-0.4	80.1	80.1	77.2	2.92	27.411		
800.0	800.0	800.0	800.0	1.7	1.7	90.26	-0.4	80.1	80.1	76.7	3.37	23.756		
900.0	900.0	900.0	900.0	1.9	1.9	90.26	-0.4	80.1	80.1	76.3	3.82	20.961		
1,000.0	1,000.0	1,000.0	1,000.0	2.1	2.1	90.26	-0.4	80.1	80.1	75.8	4.27	18.755 CC, ES		
1,100.0	1,100.0	1,100.0	1,100.0	2.3	2.4	-169.14	-0.4	80.1	81.8	77.1	4.70	17.396		
1,200.0	1,199.8	1,199.8	1,199.8	2.5	2.6	-169.77	-0.4	80.1	87.0	81.8	5.12	16.987		
1,300.0	1,299.5	1,299.5	1,299.5	2.8	2.8	-170.67	-0.4	80.1	95.5	90.0	5.54	17.261		
1,400.0	1,398.7	1,398.7	1,398.7	3.0	3.0	-171.69	-0.4	80.1	107.6	101.6	5.95	18.081		
1,491.4	1,489.0	1,489.0	1,489.0	3.2	3.2	-172.61	-0.4	80.1	121.6	115.3	6.33	19.221		
1,500.0	1,497.5	1,497.5	1,497.5	3.3	3.3	-172.70	-0.4	80.1	123.1	116.7	6.36	19.337		
1,600.0	1,596.0	1,596.0	1,596.0	3.6	3.5	-173.59	-0.4	80.1	140.0	133.2	6.80	20.588		
1,700.0	1,694.5	1,694.5	1,694.5	3.9	3.7	-174.28	-0.4	80.1	157.0	149.8	7.24	21.676		
1,800.0	1,793.1	1,793.1	1,793.1	4.2	3.9	-174.84	-0.4	80.1	174.0	166.3	7.69	22.630		
1,900.0	1,891.6	1,891.6	1,891.6	4.6	4.1	-175.30	-0.4	80.1	191.0	182.9	8.14	23.471		
2,000.0	1,990.1	1,990.1	1,990.1	4.9	4.4	-175.69	-0.4	80.1	208.0	199.4	8.59	24.217		
2,100.0	2,088.7	2,088.7	2,088.7	5.3	4.6	-176.02	-0.4	80.1	225.1	216.0	9.04	24.883		
2,200.0	2,187.2	2,187.2	2,187.2	5.6	4.8	-176.30	-0.4	80.1	242.1	232.6	9.50	25.480		
2,300.0	2,285.7	2,285.7	2,285.7	6.0	5.0	-176.54	-0.4	80.1	259.1	249.2	9.96	26.019		
2,400.0	2,384.3	2,384.3	2,384.3	6.4	5.2	-176.75	-0.4	80.1	276.2	265.8	10.42	26.507		
2,500.0	2,482.8	2,482.8	2,482.8	6.8	5.5	-176.94	-0.4	80.1	293.2	282.3	10.88	26.950		
2,600.0	2,581.3	2,577.8	2,577.8	7.1	5.7	-176.93	-1.3	80.7	310.7	299.4	11.31	27.462		
2,700.0	2,679.9	2,671.5	2,671.4	7.5	5.8	-176.42	-4.7	82.9	329.6	317.9	11.73	28.098		
2,800.0	2,778.4	2,764.5	2,764.1	7.9	6.0	-175.52	-10.6	86.7	349.9	337.7	12.15	28.805		
2,900.0	2,876.9	2,856.5	2,855.6	8.3	6.2	-174.30	-19.0	92.0	371.7	359.1	12.57	29.563		
3,000.0	2,975.5	2,948.3	2,946.4	8.7	6.4	-172.83	-29.8	98.9	395.1	382.1	13.01	30.361		
3,100.0	3,074.0	3,044.7	3,041.8	9.1	6.6	-171.31	-42.1	106.8	419.4	405.9	13.48	31.111		
3,200.0	3,172.5	3,141.1	3,137.1	9.5	6.8	-169.97	-54.4	114.7	443.9	430.0	13.96	31.801		
3,300.0	3,271.0	3,237.6	3,232.4	9.9	7.0	-168.76	-66.7	122.5	468.6	454.2	14.45	32.437		
3,400.0	3,369.6	3,334.0	3,327.8	10.2	7.3	-167.67	-78.9	130.4	493.6	478.6	14.95	33.021		
3,500.0	3,468.1	3,430.5	3,423.1	10.6	7.5	-166.69	-91.2	138.2	518.6	503.2	15.45	33.560		
3,600.0	3,566.6	3,526.9	3,518.4	11.0	7.8	-165.80	-103.5	146.1	543.8	527.8	15.97	34.057		
3,700.0	3,665.2	3,623.4	3,613.8	11.4	8.0	-164.98	-115.8	154.0	569.1	552.6	16.49	34.516		
3,800.0	3,763.7	3,726.0	3,715.3	11.8	8.3	-164.22	-128.5	162.1	594.3	577.3	17.03	34.903		
3,900.0	3,862.2	3,837.5	3,826.1	12.2	8.6	-163.74	-139.3	169.0	617.6	600.0	17.57	35.143		
4,000.0	3,960.8	3,950.5	3,938.7	12.6	8.9	-163.62	-146.5	173.6	638.6	620.5	18.10	35.277		
4,100.0	4,059.3	4,064.5	4,052.7	13.0	9.1	-163.81	-150.0	175.9	657.2	638.6	18.61	35.318		
4,200.0	4,157.8	4,169.7	4,157.8	13.4	9.3	-164.22	-150.4	176.1	673.8	654.7	19.07	35.334		
4,300.0	4,256.4	4,268.2	4,256.4	13.8	9.5	-164.60	-150.4	176.1	690.3	670.8	19.52	35.354		
4,400.0	4,354.9	4,366.8	4,354.9	14.2	9.7	-164.97	-150.4	176.1	706.8	686.8	19.98	35.367		
4,500.0	4,453.4	4,465.3	4,453.4	14.6	10.0	-165.32	-150.4	176.1	723.3	702.8	20.44	35.380		
4,600.0	4,552.0	4,563.8	4,552.0	15.0	10.2	-165.65	-150.4	176.1	739.8	718.9	20.90	35.394		
4,700.0	4,650.5	4,662.4	4,650.5	15.4	10.4	-165.97	-150.4	176.1	756.4	735.0	21.36	35.407		
4,800.0	4,749.0	4,760.9	4,749.0	15.8	10.6	-166.28	-150.4	176.1	773.0	751.2	21.82	35.420		
4,900.0	4,847.6	4,859.4	4,847.6	16.2	10.8	-166.57	-150.4	176.1	789.6	767.3	22.28	35.432		
5,000.0	4,946.1	4,958.0	4,946.1	16.6	11.0	-166.86	-150.4	176.1	806.2	783.5	22.75	35.445		

CC - Min centre to center distance or convergent point, SF - min separation factor, ES - min ellipse separation

Company:	Synergy Resources	Local Co-ordinate Reference:	Well SRC Weld 152 12-10-3NHZ
Project:	SEC.10-T6N-R67W	TVD Reference:	WELL @ 4861.0ft (Original Well Elev)
Reference Site:	SRC Weld 152 Pad Sec.10-T6N-R67W	MD Reference:	WELL @ 4861.0ft (Original Well Elev)
Site Error:	0.0ft	North Reference:	True
Reference Well:	SRC Weld 152 12-10-3NHZ	Survey Calculation Method:	Minimum Curvature
Well Error:	0.0ft	Output errors are at	2.00 sigma
Reference Wellbore	Wellbore #1	Database:	Landmark
Reference Design:	Plan #2 (10-17-13)	Offset TVD Reference:	Offset Datum

Offset Design												Offset Site Error:	0.0 ft
Survey Program: 0-MWD												Offset Well Error:	0.0 ft
Reference		Offset		Semi Major Axis			Distance						
Measured Depth (ft)	Vertical Depth (ft)	Measured Depth (ft)	Vertical Depth (ft)	Reference (ft)	Offset (ft)	Highside Toolface (°)	Offset Wellbore Centre +N/-S (ft)	+E/-W (ft)	Between Centres (ft)	Between Ellipses (ft)	Minimum Separation (ft)	Separation Factor	Warning
5,100.0	5,044.6	5,056.5	5,044.6	17.0	11.2	-167.13	-150.4	176.1	822.9	799.6	23.21	35.457	
5,200.0	5,143.2	5,155.0	5,143.2	17.4	11.4	-167.39	-150.4	176.1	839.5	815.8	23.67	35.469	
5,300.0	5,241.7	5,253.6	5,241.7	17.8	11.6	-167.63	-150.4	176.1	856.2	832.1	24.13	35.481	
5,400.0	5,340.2	5,352.1	5,340.2	18.2	11.8	-167.87	-150.4	176.1	872.9	848.3	24.59	35.492	
5,500.0	5,438.8	5,450.6	5,438.8	18.6	12.0	-168.11	-150.4	176.1	889.6	864.5	25.06	35.503	
5,600.0	5,537.3	5,549.2	5,537.3	19.0	12.2	-168.33	-150.4	176.1	906.3	880.8	25.52	35.514	
5,674.8	5,611.0	5,622.8	5,611.0	19.3	12.4	-168.49	-150.4	176.1	918.8	893.0	25.87	35.521	
5,700.0	5,635.8	5,647.7	5,635.8	19.3	12.5	-168.56	-150.4	176.1	922.9	897.0	25.99	35.506	
5,800.0	5,734.8	5,746.6	5,734.8	19.6	12.7	-168.79	-150.4	176.1	937.1	910.7	26.45	35.425	
5,900.0	5,834.2	5,846.0	5,834.2	19.8	12.9	-168.96	-150.4	176.1	948.0	921.1	26.89	35.259	
6,000.0	5,933.9	5,945.7	5,933.9	20.0	13.1	-169.07	-150.4	176.1	955.4	928.1	27.29	35.013	
6,100.0	6,033.8	6,045.7	6,033.8	20.2	13.3	-169.14	-150.4	176.1	959.3	931.7	27.65	34.691	
6,166.2	6,100.0	6,111.9	6,100.0	20.3	13.5	90.02	-150.4	176.1	960.1	932.2	27.89	34.427	
6,200.0	6,133.8	6,145.7	6,133.8	20.3	13.5	90.02	-150.4	176.1	960.1	932.1	28.02	34.262	
6,300.0	6,233.8	6,245.7	6,233.8	20.5	13.7	90.02	-150.4	176.1	960.1	931.7	28.42	33.781	
6,400.0	6,333.8	6,345.7	6,333.8	20.6	14.0	90.02	-150.4	176.1	960.1	931.3	28.82	33.312	
6,450.0	6,383.8	6,395.7	6,383.8	20.7	14.1	90.02	-150.4	176.1	960.1	931.1	29.02	33.082	
6,500.0	6,433.7	6,445.6	6,433.7	20.7	14.2	90.17	-150.4	176.1	960.1	930.9	29.22	32.857	
6,550.0	6,483.5	6,495.3	6,483.5	20.8	14.3	90.48	-150.4	176.1	960.1	930.7	29.42	32.637	
6,600.0	6,532.7	6,544.6	6,532.7	20.8	14.4	90.98	-150.4	176.1	960.2	930.6	29.62	32.424	
6,650.0	6,581.2	6,594.6	6,582.7	20.9	14.5	91.62	-149.3	176.1	960.5	930.7	29.81	32.224	
6,700.0	6,628.7	6,645.7	6,633.6	20.9	14.6	92.27	-144.7	176.1	960.9	930.9	29.98	32.049	
6,750.0	6,675.1	6,697.7	6,684.9	21.0	14.7	92.91	-136.3	176.1	961.4	931.3	30.14	31.899	
6,800.0	6,720.0	6,750.6	6,736.4	21.0	14.8	93.54	-124.0	176.1	962.0	931.7	30.28	31.768	
6,850.0	6,763.3	6,804.5	6,787.6	21.0	14.8	94.16	-107.6	176.1	962.7	932.3	30.42	31.649	
6,900.0	6,804.8	6,859.3	6,838.4	21.1	14.9	94.77	-87.0	176.0	963.6	933.0	30.56	31.534	
6,950.0	6,844.2	6,915.0	6,888.3	21.1	15.0	95.35	-62.1	176.0	964.5	933.8	30.71	31.410	
7,000.0	6,881.3	6,971.8	6,936.9	21.1	15.1	95.91	-32.9	176.0	965.4	934.5	30.88	31.266	
7,050.0	6,916.0	7,029.5	6,983.8	21.2	15.2	96.45	0.7	176.0	966.4	935.3	31.09	31.086	
7,100.0	6,948.2	7,088.1	7,028.5	21.3	15.2	96.96	38.6	175.9	967.4	936.0	31.35	30.857	
7,150.0	6,977.5	7,147.7	7,070.7	21.3	15.3	97.43	80.7	175.9	968.4	936.7	31.68	30.566	
7,200.0	7,004.0	7,208.2	7,109.7	21.4	15.6	97.86	126.9	175.9	969.3	937.2	32.10	30.196	
7,250.0	7,027.5	7,269.5	7,145.2	21.6	15.8	98.25	176.9	175.8	970.2	937.6	32.62	29.742	
7,300.0	7,047.8	7,331.6	7,176.6	21.7	16.2	98.59	230.4	175.8	971.1	937.8	33.25	29.202	
7,350.0	7,064.9	7,394.4	7,203.5	21.9	16.6	98.87	287.1	175.7	971.8	937.8	34.00	28.581	
7,400.0	7,078.7	7,457.7	7,225.6	22.1	17.1	99.11	346.5	175.7	972.4	937.5	34.88	27.880	
7,450.0	7,089.1	7,521.5	7,242.4	22.4	17.6	99.28	408.0	175.6	972.8	937.0	35.88	27.116	
7,500.0	7,096.1	7,585.6	7,253.7	22.7	18.2	99.40	471.1	175.6	973.1	936.2	36.99	26.309	
7,550.0	7,099.6	7,650.0	7,259.3	23.1	18.9	99.46	535.1	175.5	973.3	935.1	38.20	25.476	
7,575.0	7,100.0	7,681.8	7,260.0	23.3	19.2	99.46	567.0	175.5	973.3	934.5	38.84	25.057	
7,600.0	7,100.0	7,706.8	7,260.0	23.5	19.5	99.46	592.0	175.5	973.3	933.9	39.40	24.701	
7,700.0	7,100.0	7,806.8	7,260.0	24.4	20.7	99.46	692.0	175.4	973.3	931.5	41.77	23.303	
7,800.0	7,100.0	7,906.8	7,260.0	25.4	22.0	99.46	792.0	175.3	973.3	929.0	44.33	21.955	
7,900.0	7,100.0	8,006.8	7,260.0	26.6	23.4	99.46	892.0	175.2	973.3	926.2	47.06	20.681	
8,000.0	7,100.0	8,106.8	7,260.0	27.9	24.9	99.46	992.0	175.1	973.3	923.3	49.93	19.491	
8,100.0	7,100.0	8,206.8	7,260.0	29.2	26.4	99.46	1,092.0	175.1	973.3	920.3	52.92	18.390	
8,200.0	7,100.0	8,306.8	7,260.0	30.6	28.0	99.46	1,192.0	175.0	973.3	917.3	56.01	17.376	
8,300.0	7,100.0	8,406.8	7,260.0	32.1	29.6	99.46	1,292.0	174.9	973.3	914.1	59.18	16.445	
8,400.0	7,100.0	8,506.8	7,260.0	33.6	31.2	99.46	1,392.0	174.8	973.3	910.8	62.43	15.591	
8,500.0	7,100.0	8,606.8	7,260.0	35.2	32.9	99.46	1,492.0	174.7	973.2	907.5	65.73	14.807	
8,600.0	7,100.0	8,706.8	7,260.0	36.8	34.6	99.46	1,592.0	174.6	973.2	904.2	69.08	14.088	
8,700.0	7,100.0	8,806.8	7,260.0	38.4	36.3	99.46	1,692.0	174.6	973.2	900.8	72.48	13.428	

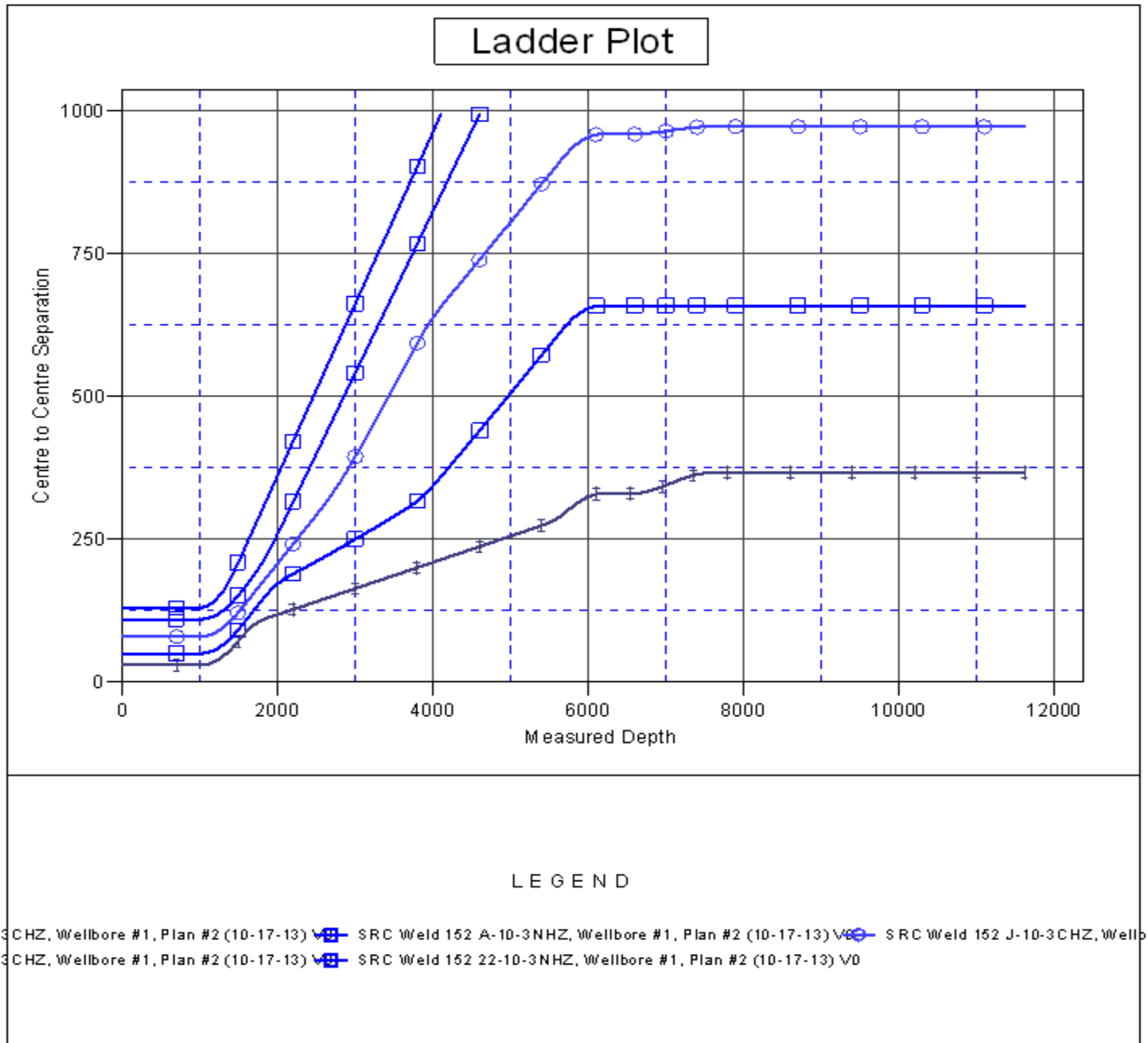
CC - Min centre to center distance or convergent point, SF - min separation factor, ES - min ellipse separation

Company:	Synergy Resources	Local Co-ordinate Reference:	Well SRC Weld 152 12-10-3NHZ
Project:	SEC.10-T6N-R67W	TVD Reference:	WELL @ 4861.0ft (Original Well Elev)
Reference Site:	SRC Weld 152 Pad Sec.10-T6N-R67W	MD Reference:	WELL @ 4861.0ft (Original Well Elev)
Site Error:	0.0ft	North Reference:	True
Reference Well:	SRC Weld 152 12-10-3NHZ	Survey Calculation Method:	Minimum Curvature
Well Error:	0.0ft	Output errors are at	2.00 sigma
Reference Wellbore	Wellbore #1	Database:	Landmark
Reference Design:	Plan #2 (10-17-13)	Offset TVD Reference:	Offset Datum

Offset Design SRC Weld 152 Pad Sec.10-T6N-R67W - SRC Weld 152 J-10-3CHZ - Wellbore #1 - Plan #2 (10-17-13)												Offset Site Error:	0.0 ft
Survey Program: 0-MWD												Offset Well Error:	0.0 ft
Reference		Offset		Semi Major Axis			Distance						
Measured Depth (ft)	Vertical Depth (ft)	Measured Depth (ft)	Vertical Depth (ft)	Reference (ft)	Offset (ft)	Highside Toolface (°)	Offset Wellbore Centre +N/-S (ft)	+E/-W (ft)	Between Centres (ft)	Between Ellipses (ft)	Minimum Separation (ft)	Separation Factor	Warning
8,800.0	7,100.0	8,906.8	7,260.0	40.1	38.1	99.46	1,792.0	174.5	973.2	897.3	75.91	12.820	
8,900.0	7,100.0	9,006.8	7,260.0	41.8	39.8	99.46	1,892.0	174.4	973.2	893.8	79.38	12.260	
9,000.0	7,100.0	9,106.8	7,260.0	43.5	41.6	99.46	1,992.0	174.3	973.2	890.3	82.88	11.742	
9,100.0	7,100.0	9,206.8	7,260.0	45.2	43.4	99.46	2,092.0	174.2	973.2	886.8	86.41	11.263	
9,200.0	7,100.0	9,306.8	7,260.0	46.9	45.2	99.46	2,192.0	174.1	973.2	883.3	89.95	10.819	
9,300.0	7,100.0	9,406.8	7,260.0	48.7	47.0	99.46	2,292.0	174.1	973.2	879.7	93.52	10.406	
9,400.0	7,100.0	9,506.8	7,260.0	50.4	48.8	99.46	2,392.0	174.0	973.2	876.1	97.10	10.022	
9,500.0	7,100.0	9,606.8	7,260.0	52.2	50.6	99.46	2,492.0	173.9	973.2	872.5	100.70	9.664	
9,600.0	7,100.0	9,706.8	7,260.0	54.0	52.5	99.46	2,592.0	173.8	973.2	868.9	104.32	9.329	
9,700.0	7,100.0	9,806.8	7,260.0	55.8	54.3	99.46	2,692.0	173.7	973.2	865.2	107.95	9.015	
9,800.0	7,100.0	9,906.8	7,260.0	57.6	56.2	99.46	2,792.0	173.6	973.2	861.6	111.59	8.721	
9,900.0	7,100.0	10,006.8	7,260.0	59.4	58.0	99.46	2,892.0	173.6	973.2	857.9	115.24	8.445	
10,000.0	7,100.0	10,106.8	7,260.0	61.2	59.9	99.46	2,992.0	173.5	973.2	854.3	118.90	8.185	
10,100.0	7,100.0	10,206.8	7,260.0	63.0	61.7	99.46	3,092.0	173.4	973.2	850.6	122.56	7.940	
10,200.0	7,100.0	10,306.8	7,260.0	64.9	63.6	99.46	3,192.0	173.3	973.2	846.9	126.24	7.709	
10,300.0	7,100.0	10,406.8	7,260.0	66.7	65.5	99.46	3,292.0	173.2	973.2	843.2	129.92	7.490	
10,400.0	7,100.0	10,506.8	7,260.0	68.5	67.3	99.46	3,392.0	173.1	973.1	839.5	133.61	7.283	
10,500.0	7,100.0	10,606.8	7,260.0	70.4	69.2	99.46	3,492.0	173.1	973.1	835.8	137.31	7.087	
10,600.0	7,100.0	10,706.8	7,260.0	72.2	71.1	99.46	3,592.0	173.0	973.1	832.1	141.01	6.901	
10,700.0	7,100.0	10,806.8	7,260.0	74.1	72.9	99.46	3,692.0	172.9	973.1	828.4	144.72	6.724	
10,800.0	7,100.0	10,906.8	7,260.0	75.9	74.8	99.46	3,792.0	172.8	973.1	824.7	148.43	6.556	
10,900.0	7,100.0	11,006.8	7,260.0	77.8	76.7	99.46	3,892.0	172.7	973.1	821.0	152.14	6.396	
11,000.0	7,100.0	11,106.8	7,260.0	79.7	78.6	99.46	3,992.0	172.6	973.1	817.3	155.86	6.243	
11,100.0	7,100.0	11,206.8	7,260.0	81.5	80.5	99.46	4,092.0	172.6	973.1	813.5	159.59	6.098	
11,200.0	7,100.0	11,306.8	7,260.0	83.4	82.4	99.46	4,192.0	172.5	973.1	809.8	163.32	5.958	
11,300.0	7,100.0	11,406.8	7,260.0	85.2	84.3	99.46	4,292.0	172.4	973.1	806.1	167.05	5.825	
11,400.0	7,100.0	11,506.8	7,260.0	87.1	86.1	99.46	4,392.0	172.3	973.1	802.3	170.78	5.698	
11,500.0	7,100.0	11,606.8	7,260.0	89.0	88.0	99.46	4,492.0	172.2	973.1	798.6	174.52	5.576	
11,600.0	7,100.0	11,706.8	7,260.0	90.9	89.9	99.46	4,592.0	172.1	973.1	794.8	178.26	5.459	
11,618.5	7,100.0	11,725.3	7,260.0	91.2	90.3	99.46	4,610.5	172.1	973.1	794.1	178.95	5.438	
11,618.9	7,100.0	11,725.3	7,260.0	91.2	90.3	99.46	4,610.5	172.1	973.1	794.1	178.96	5.438 SF	

Company:	Synergy Resources	Local Co-ordinate Reference:	Well SRC Weld 152 12-10-3NHZ
Project:	SEC.10-T6N-R67W	TVD Reference:	WELL @ 4861.0ft (Original Well Elev)
Reference Site:	SRC Weld 152 Pad Sec.10-T6N-R67W	MD Reference:	WELL @ 4861.0ft (Original Well Elev)
Site Error:	0.0ft	North Reference:	True
Reference Well:	SRC Weld 152 12-10-3NHZ	Survey Calculation Method:	Minimum Curvature
Well Error:	0.0ft	Output errors are at	2.00 sigma
Reference Wellbore	Wellbore #1	Database:	Landmark
Reference Design:	Plan #2 (10-17-13)	Offset TVD Reference:	Offset Datum

Reference Depths are relative to WELL @ 4861.0ft (Original Well Elev) Coordinates are relative to: SRC Weld 152 12-10-3NHZ
 Offset Depths are relative to Offset Datum Coordinate System is US State Plane 1983, Colorado Northern Zone
 Central Meridian is -105.500000 ° Grid Convergence at Surface is: 0.40°



Company:	Synergy Resources	Local Co-ordinate Reference:	Well SRC Weld 152 12-10-3NHZ
Project:	SEC.10-T6N-R67W	TVD Reference:	WELL @ 4861.0ft (Original Well Elev)
Reference Site:	SRC Weld 152 Pad Sec.10-T6N-R67W	MD Reference:	WELL @ 4861.0ft (Original Well Elev)
Site Error:	0.0ft	North Reference:	True
Reference Well:	SRC Weld 152 12-10-3NHZ	Survey Calculation Method:	Minimum Curvature
Well Error:	0.0ft	Output errors are at	2.00 sigma
Reference Wellbore	Wellbore #1	Database:	Landmark
Reference Design:	Plan #2 (10-17-13)	Offset TVD Reference:	Offset Datum

Reference Depths are relative to WELL @ 4861.0ft (Original Well Elev) Coordinates are relative to: SRC Weld 152 12-10-3NHZ
 Offset Depths are relative to Offset Datum Coordinate System is US State Plane 1983, Colorado Northern Zone
 Central Meridian is -105.500000 ° Grid Convergence at Surface is: 0.40°

