



October 4, 2013

Director
Colorado Oil and Gas Conservation Commission
1120 Lincoln Street, Suite 801
Denver, CO 80203

Re: 30 Day Certification Letter – Rule 318 A.(e)
Weld 152 #12-10-3NHZ
Township 6 North, Range 67 West
Section 10
Weld County, Colorado

Dear Director,

Synergy Resources Corporation (SRC) is planning to drill the captioned horizontal well in accordance with the provisions of COGCC Rule 318A.(e).

SRC's proposed wellbore spacing unit consist of the NW/4 Section 10, T6N, R67W and the SW/4 of Section 3, T6N, R67W, creating a 320-acre wellbore spacing unit for the Niobrara formation. SRC is not the only owner within the proposed spacing unit and such provided notice to the remaining owner(s) within said proposed spacing unit as required under COGCC Rule 318A(I).e(6). The 30 Day Notice expired October 4, 2013.

Enclosed is a copy of the plat illustrating the proposed wellbore spacing unit.

Thank you for your attention to this matter. SRC respectfully requests that the Director approve the captioned Horizontal well.

If you have any questions or issues regarding this permit, please contact Craig Rasmuson at (970) 737-1073.

Sincerely,

Craig Rasmuson

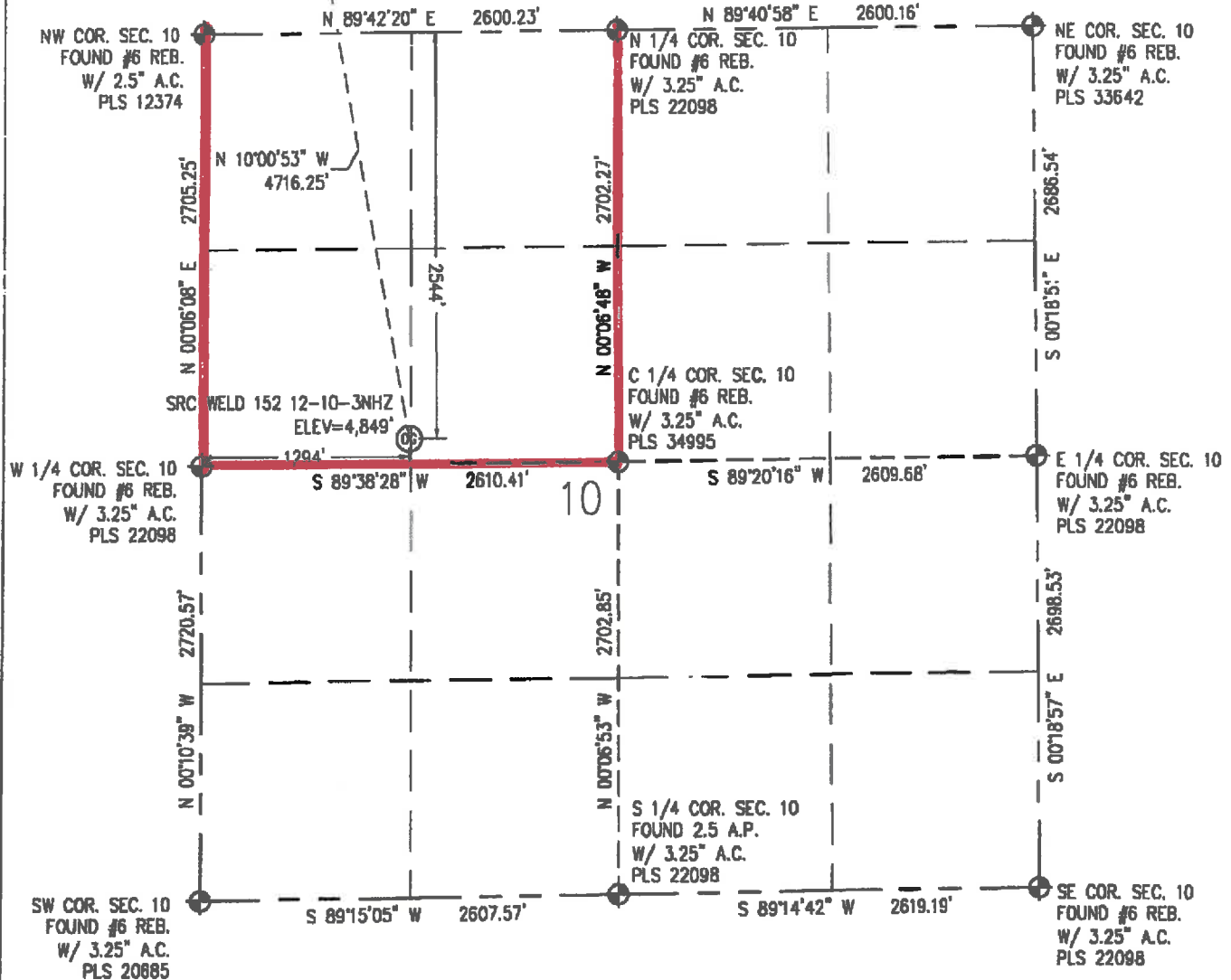
Craig Rasmuson
Synergy Resources Corporation

WELL LOCATION CERTIFICATE

THIS MAP DOES NOT REPRESENT A BOUNDARY SURVEY

SECTION 10
TOWNSHIP 6 NORTH
RANGE 67 WEST

SEE SHEET 2 OF 2



IN ACCORDANCE WITH A REQUEST FROM CRAIG RASMUSON - SYNERGY RESOURCES, BASELINE ENGINEERING CORP. HAS DETERMINED THE LOCATION OF THE SRC WELD 152 12-10-3NHZ TO BE 2,544' FNL AND 1,294' FNL, AS MEASURED AT NINETY (90) DEGREES FROM THE SECTION LINE OF SECTION 10, TOWNSHIP 6 NORTH, RANGE 67 WEST AND THE BOTTOM HOLE LOCATION TO BE 2,105' FSL AND 510' FNL OF SECTION 3, TOWNSHIP 6 NORTH, RANGE 67 WEST, 6TH PRINCIPAL MERIDIAN, WELD COUNTY, COLORADO.

I HEREBY CERTIFY THAT THIS WELL LOCATION CERTIFICATE WAS PREPARED BY ME, OR UNDER MY DIRECT SUPERVISION, THAT THE FIELD WORK WAS COMPLETED ON 4/20/2012, THAT IT IS NOT A LAND SURVEY PLAT OR AN IMPROVEMENT SURVEY PLAT, AND THAT IT IS NOT TO BE RELIED UPON FOR ESTABLISHMENT OF FENCE, BUILDING, OR OTHER FUTURE IMPROVEMENT LINES.

Scale 1" = 1000 ft



NOTES:

- 1) LAT/LONG SHOWN ARE BASED ON A GPS OBSERVATION (NAD83).
- 2) BEARINGS SHOWN ARE GRID BEARINGS OF THE COLORADO STATE PLANE COORDINATE SYSTEM, NORTH ZONE, NORTH AMERICAN DATUM 1983/2007.
- 3) GROUND ELEVATIONS ARE BASED ON A GPS OBSERVATION (NAD 88 DATUM).
- 4) ALL DISTANCES SHOWN ARE FIELD MEASURED UNLESS OTHERWISE NOTED.
- 5) THE NEAREST EXISTING WELL IS: NONE IN QUARTER SECTION.
- 6) IMPROVEMENTS: SEE LOCATION DRAWING EXHIBIT FOR ALL VISIBLE IMPROVEMENTS WITHIN 600' OF WELL HEAD.
- 7) SURFACE USE: CORN FIELD.

SURFACE HOLE:
LATITUDE: 40.502013° N
LONGITUDE: 104.884227° W
PDOP: 1.0
1/4, 1/4: SW1/4NW1/4
NEAREST PROPERTY LINE: 160' S

BOTTOM HOLE:
LATITUDE: 40.514774° N
LONGITUDE: 104.887060° W

LEGEND

- - FOUND/SET SURVEY MONUMENT PER MONUMENT RECORD EXCEPTIONS NOTED.
- - CALCULATED SURVEY MONUMENT POSITION
- (C) - CALCULATED DIMENSION

AARON A DEMO
Professional Land Surveyor Registration No. 38285
State of Colorado
FOR AND ON BEHALF OF BASELINE ENGINEERING CORP.

Completed
8/23/2013

NOTICE: According to Colorado law you MUST commence any legal action based upon any defect in this WLLC within three years after you first discover such defect. In no event may any action based upon any defect in this WLLC be commenced more than ten years from this said date of the certification shown hereon.

JOB #: SYNDEN67W10-01

WELL LOCATION CERTIFICATE
THIS MAP DOES NOT REPRESENT A BOUNDARY SURVEYWITNESS COR. NW COR. SEC. 3
FOUND #6 REB.
W/ 3.25" A.C.
PLS 34995WITNESS COR.
NW COR. SEC. 3
FOUND #6 REB.
W/ 3.25" A.C.
PLS 34995NW COR. SEC. 3
FOUND #6 REB.
W/ 3.25" A.C.
PLS 34995W 1/4 COR. SEC. 3
FOUND #6 REB.
W/ 3.25" A.C.
PLS 22098BOTTOM HOLE
SRC WELD 152 12-10-3NHZN 1/4 COR. SEC. 3
FOUND #6 REB.
W/ 2.5" A.C.
PLS 37929NE COR. SEC. 3
FOUND #6 REB.
W/ 2.5 A.C.
PLS 12374E 1/4 COR. SEC. 3
FOUND #6 REB.
W/ 3.25" A.C.
PLS 33642C 1/4 COR. SEC. 3
FOUND #6 REB.
W/ 3.25" A.C.
PLS 22098NW COR. SEC. 10
FOUND #6 REB.
W/ 2.5" A.C.
PLS 12374

SEE SHEET 1 OF 2

N 1/4 COR. SEC. 10
FOUND #6 REB.
W/ 3.25" A.C.
PLS 22098NE COR. SEC. 10
FOUND #6 REB.
W/ 3.25" A.C.
PLS 33642

IN ACCORDANCE WITH A REQUEST FROM CRAIG RASMUSON - SYNERGY RESOURCES, BASELINE ENGINEERING CORP. HAS DETERMINED THE LOCATION OF THE SRC WELD 152 12-10-3NHZ TO BE 2,544' FSL AND 1,284' FWL, AS MEASURED AT NINETY (90) DEGREES FROM THE SECTION LINE OF SECTION 10, TOWNSHIP 6 NORTH, RANGE 67 WEST AND THE BOTTOM HOLE LOCATION TO BE 2,105' FSL AND 510' FWL OF SECTION 3, TOWNSHIP 6 NORTH, RANGE 67 WEST, 6TH PRINCIPAL MERIDIAN, WELD COUNTY, COLORADO.

I HEREBY CERTIFY THAT THIS WELL LOCATION CERTIFICATE WAS PREPARED BY ME, OR UNDER MY DIRECT SUPERVISION, THAT THE FIELD WORK WAS COMPLETED ON 4/20/2012, THAT IT IS NOT A LAND SURVEY PLAT OR AN IMPROVEMENT SURVEY PLAT, AND THAT IT IS NOT TO BE RELIED UPON FOR ESTABLISHMENT OF FENCE, BUILDING, OR OTHER FUTURE IMPROVEMENT LINES.

Scale 1" = 1000 ft

**NOTES:**

- 1) LAT/LONG SHOWN ARE BASED ON A GPS OBSERVATION (NAD83).
- 2) BEARINGS SHOWN ARE GRID BEARINGS OF THE COLORADO STATE PLANE COORDINATE SYSTEM, NORTH ZONE, NORTH AMERICAN DATUM 1983/2007.
- 3) GROUND ELEVATIONS ARE BASED ON A GPS OBSERVATION (NAVD 88 DATUM).
- 4) ALL DISTANCES SHOWN ARE FIELD MEASURED UNLESS OTHERWISE NOTED.
- 5) THE NEAREST EXISTING WELL IS: NONE IN QUARTER SECTION.
- 6) IMPROVEMENTS: SEE LOCATION DRAWING EXHIBIT FOR ALL VISIBLE IMPROVEMENTS WITHIN 600' OF WELL HEAD.
- 7) SURFACE USE: CORN FIELD.

SURFACE HOLE:
LATITUDE: 40.502013° N
LONGITUDE: 104.884227° W
PDOP: 1.0
1/4, 1/4: SW1/4NW1/4
NEAREST PROPERTY LINE: 160' S

BOTTOM HOLE:
LATITUDE: 40.514774° N
LONGITUDE: 104.887060° W

LEGEND

- FOUND/SET SURVEY MONUMENT PER MONUMENT RECORD EXCEPTIONS NOTED.
- CALCULATED SURVEY MONUMENT POSITION
- (C) - CALCULATED DIMENSION

AARON A. DEMO
Professional Land Surveyor Registration No. 38285
State of Colorado
FOR AND ON BEHALF OF BASELINE ENGINEERING CORP.

Completed
8/23/2013

JOB#: SYNO6N67W10-01