

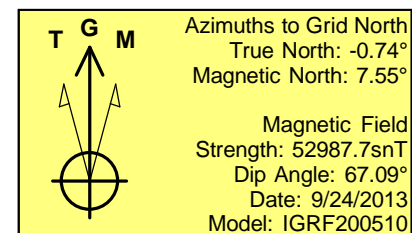
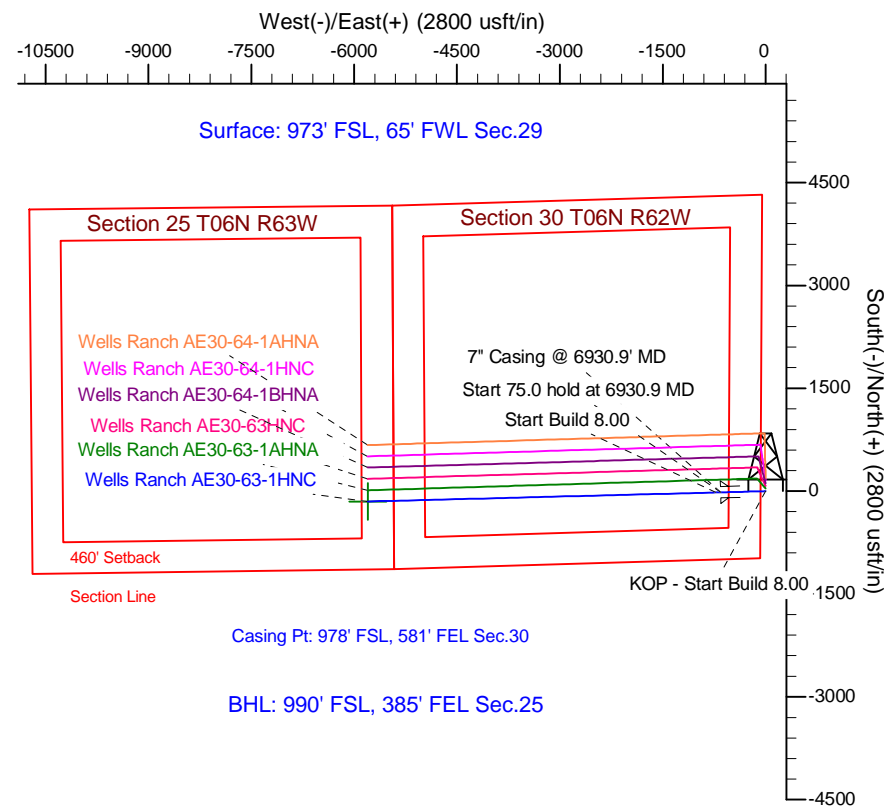
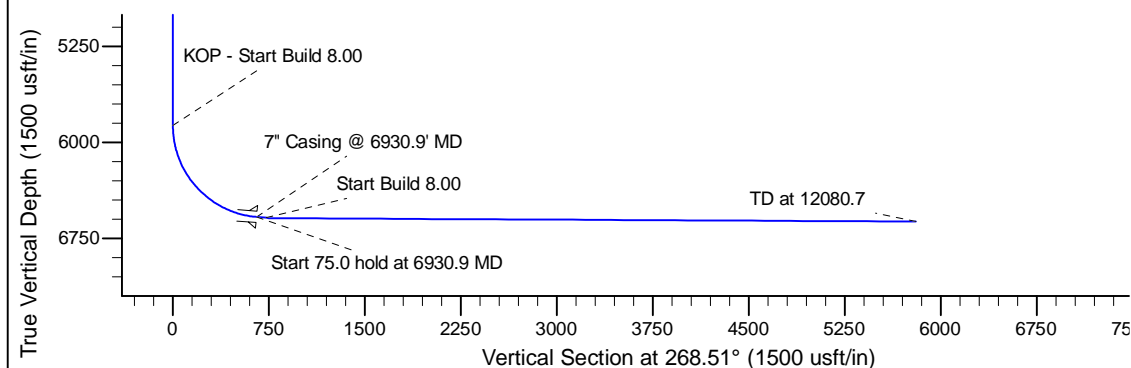
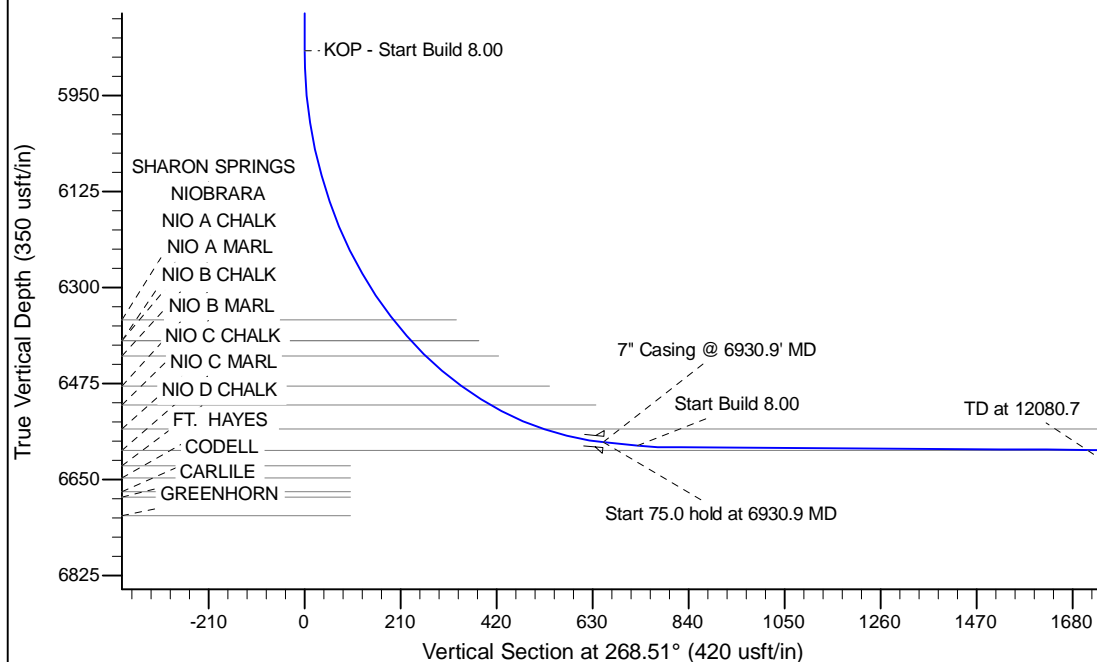
Project: Wattenberg Field
 Site: AE (Sec.29-T06N-R62W) Weld County, CO
 Well: Wells Ranch AE30-63-1HNC
 Wellbore: Original Drilling
 Design: APD - Rev 0

Northern Region Drilling - Working

Geodetic System: US State Plane 1983
 Datum: North American Datum 1983
 Ellipsoid: GRS 1980
 Zone: Colorado Northern Zone
 System Datum: Mean Sea Level

SECTION DETAILS

Sec	MD	Inc	Azi	TVD	+N/-S	+E/-W	Dleg	TFace	VSec	Target
1	0.0	0.00	0.00	0.0	0.0	0.0	0.00	0.00	0.0	
2	5868.4	0.00	0.00	5868.4	0.0	0.0	0.00	0.00	0.0	
3	6930.9	85.00	268.51	6581.9	-17.0	-653.6	8.00	268.51	653.8	
4	7005.9	85.00	268.51	6588.4	-18.9	-728.2	0.00	0.00	728.5	
5	7064.7	89.70	268.51	6591.1	-20.4	-786.9	8.00	0.00	787.2	
6	12080.7	89.70	268.51	6617.4	-150.7	-5801.2	0.00	0.00	5803.1	Wells Ranch AE30-63-1HNC BHL 990'FSL, 385'FEL



WELL DETAILS: Wells Ranch AE30-63-1HNC					
Ground Level: 4752.0					
0.0	0.0	Northing	Easting	Latitude	Longitude
		1409950.16	3318293.55	40.453080	-104.356230
Plan: APD - Rev 0 (Wells Ranch AE30-63-1HNC/Original Drilling)					
Created By: Shailey Jewell			Date: 10:32, September 25 2013		
Checked: _____			Date: _____		
Reviewed: _____			Date: _____		
Approved: _____			Date: _____		