

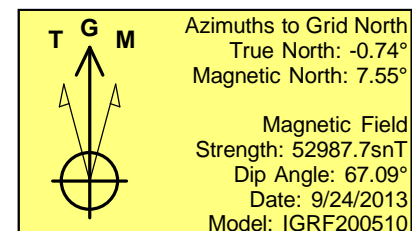
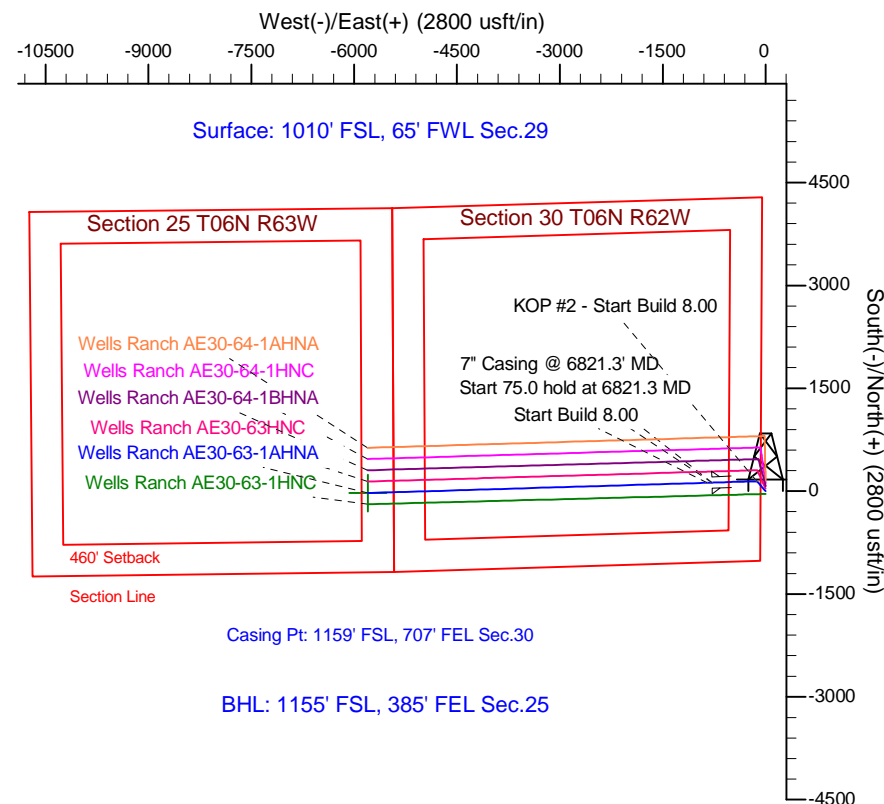
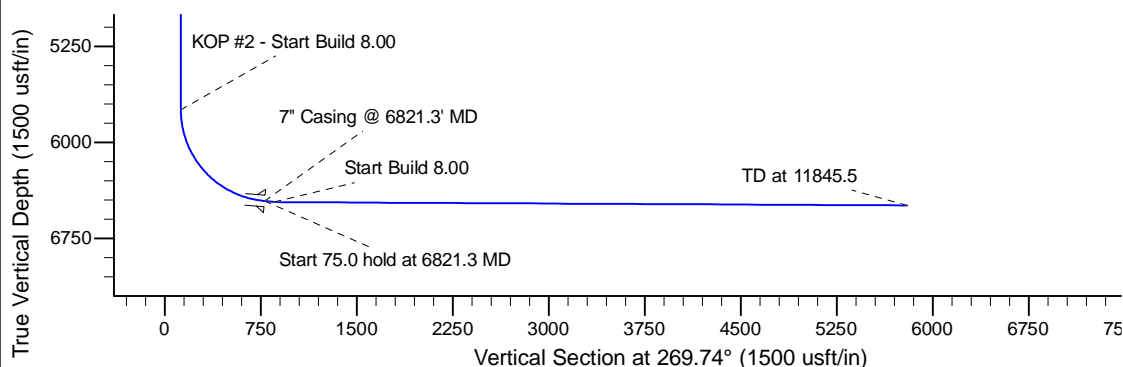
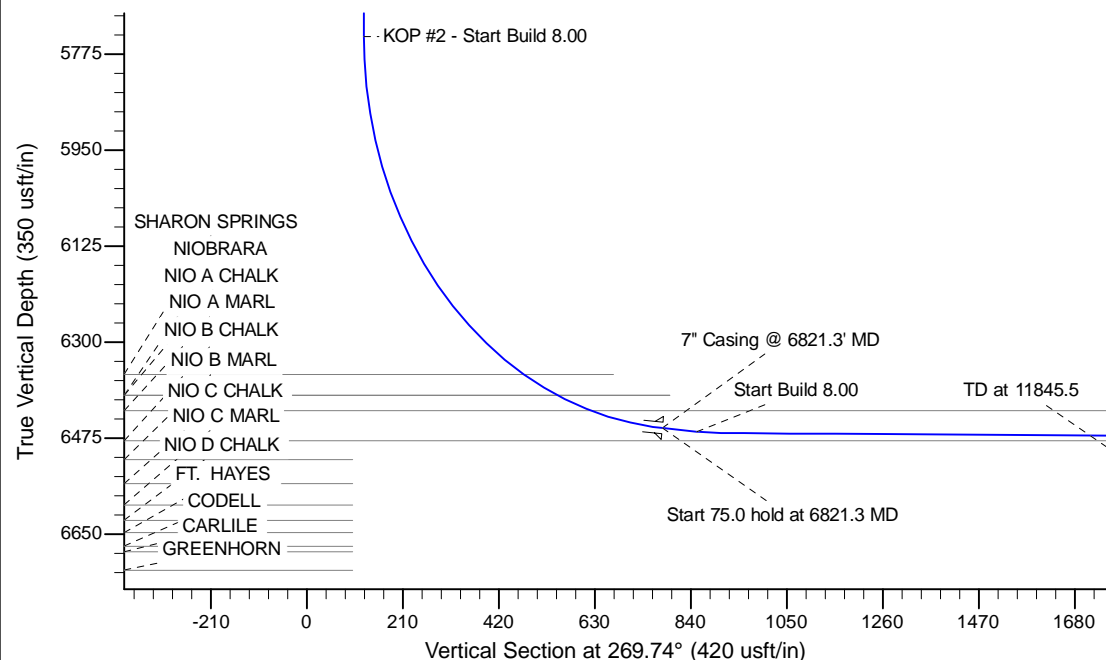
Project: Wattenberg Field
 Site: AE (Sec.29-T06N-R62W) Weld County, CO
 Well: Wells Ranch AE30-63-1AHNA
 Wellbore: Original Drilling
 Design: APD - Rev 0

Northern Region Drilling - Working

Geodetic System: US State Plane 1983
 Datum: North American Datum 1983
 Ellipsoid: GRS 1980
 Zone: Colorado Northern Zone
 System Datum: Mean Sea Level

SECTION DETAILS

Sec	MD	Inc	Azi	TVD	+N/-S	+E/-W	Dleg	TFace	VFace	Target
1	0.0	0.00	0.00	0.0	0.0	0.0	0.00	0.00	0.0	
2	2000.0	0.00	0.00	2000.0	0.0	0.0	0.00	0.00	0.0	
3	2601.6	12.03	319.24	2597.2	47.7	-41.1	2.00	319.24	40.9	
4	2916.1	12.03	319.24	2904.8	97.3	-83.9	0.00	0.00	83.5	
5	3517.7	0.00	0.00	3502.0	145.0	-125.0	2.00	180.00	124.3	
6	5758.8	0.00	0.00	5743.1	145.0	-125.0	0.00	0.00	124.3	
7	6821.3	85.00	268.27	6456.5	125.2	-778.5	8.00	268.27	777.9	
8	6896.3	85.00	268.27	6463.1	123.0	-853.2	0.00	0.00	852.6	
9	6955.1	89.70	268.27	6465.8	121.2	-911.8	8.00	0.00	911.2	
10	11845.5	89.70	268.27	6491.4	-26.8	-5799.9	0.00	0.00	5800.0	Wells Ranch AE30-63-1AHNA BHL 1155'FSL, 385'FEL



WELL DETAILS: Wells Ranch AE30-63-1AHNA					
Ground Level: 4752.0					
0.0	0.0	Northing	Eastng	Latitude	Longitude
		1409990.23	3318293.03	40.453190	-104.356230
Plan: APD - Rev 0 (Wells Ranch AE30-63-1AHNA/Original Drilling)					
Created By: Shailey Jewell			Date: 10:49, September 25 2013		
Checked: _____			Date: _____		
Reviewed: _____			Date: _____		
Approved: _____			Date: _____		