

1625 Broadway
Suite 2000
Denver, CO 80202

Tel: 303.228.4000
Fax: 303.228.4280
www.nobleenergyinc.com



10/1/13

Colorado Oil and Gas Conservation Commission
The Chancery Building
1120 Lincoln Street, Suite 801
Denver, CO 80203
Attn: Mr. Matt Lepore, Director

RE: Wells Ranch AA35-64-1BHNC
Niobrara New Drill
Township 6, Range 63 West, 6th P.M.
Section 36: 1966' FSL & 173' FEL (Surface Location)
Section 35: 1563' FSL & 536' FEL (Beginning of Lateral)
Section 35: 1560' FSL & 535' FWL (Bottom Hole Location)
Weld County, Colorado

Dear Director:

Noble Energy, Inc. ("NEI") is planning to drill the captioned boundary well in accordance with the provisions of COGCC Rule 318A.e.

NEI's proposed wellbore spacing unit consists of T6N R63W Sec. 35: S2 creating a 320-acre wellbore spacing unit for the subject formation. NEI is the only owner within the proposed wellbore spacing unit, therefore NEI hereby attests that no notice letters are required under COGCC Rule 318A(I).e.(6).

Enclosed are copies of the following documents to assist you in your review and approval of NEI's proposed APD for the captioned well:

- Map & plat illustrating proposed wellbore spacing unit.

Thank you for your attention to the enclosed. NEI respectfully requests that the COGCC review the enclosed information and approve the Application for Permit to Drill the captioned well.

Sincerely,

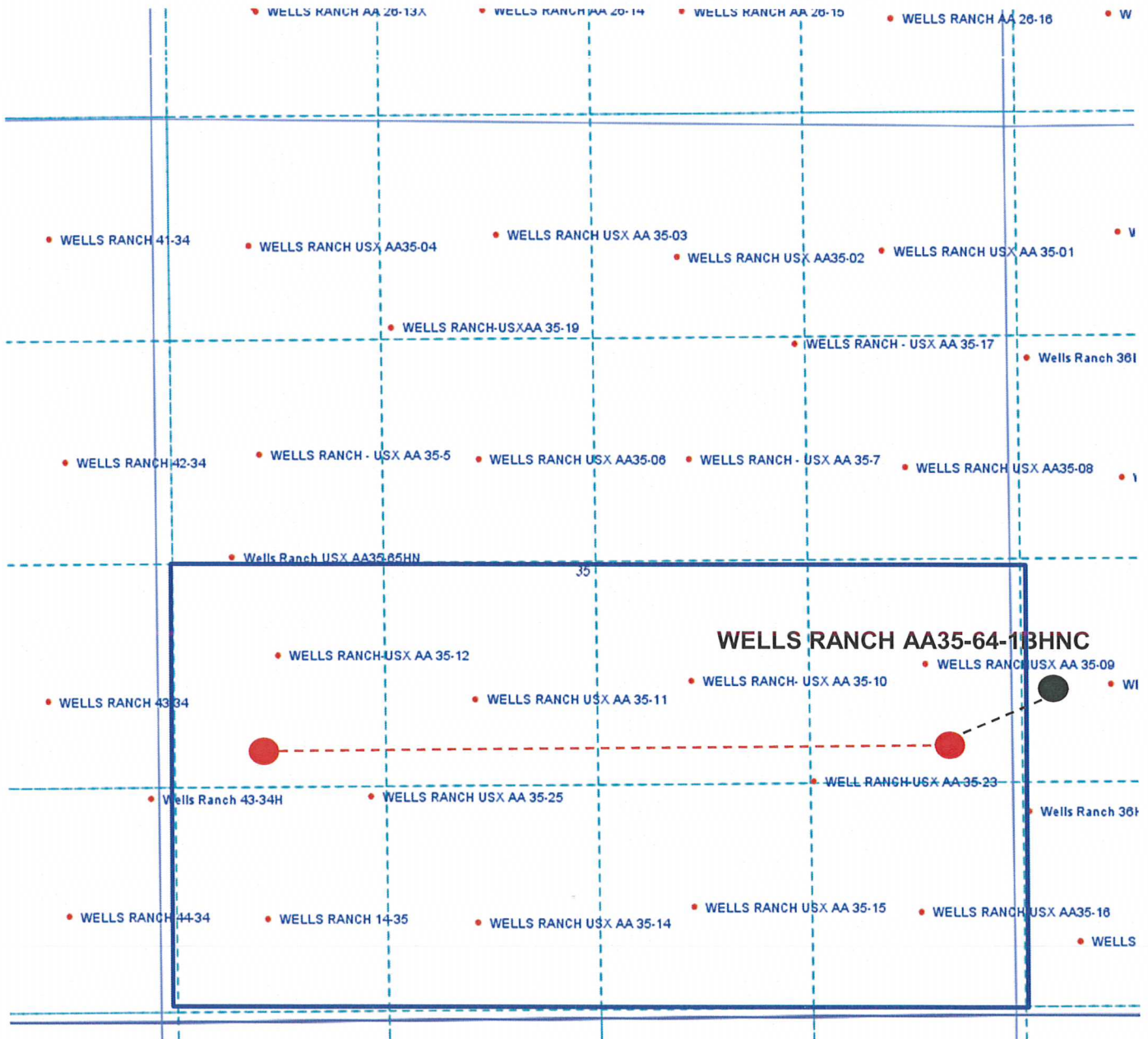
A handwritten signature in blue ink that reads 'Julie Webb'.

Julie Webb
Regulatory Analyst
Noble Energy Inc.

Wells Ranch AA35-64-1BHNC

Proposed Spacing Unit – Noble Energy, Inc

S/2 of Section 35, Township 6 North, Range 63 West



Legend



Proposed 320± acre spacing unit



Bottom Hole Location

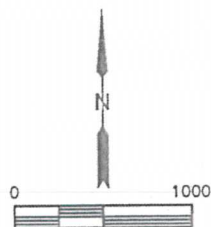
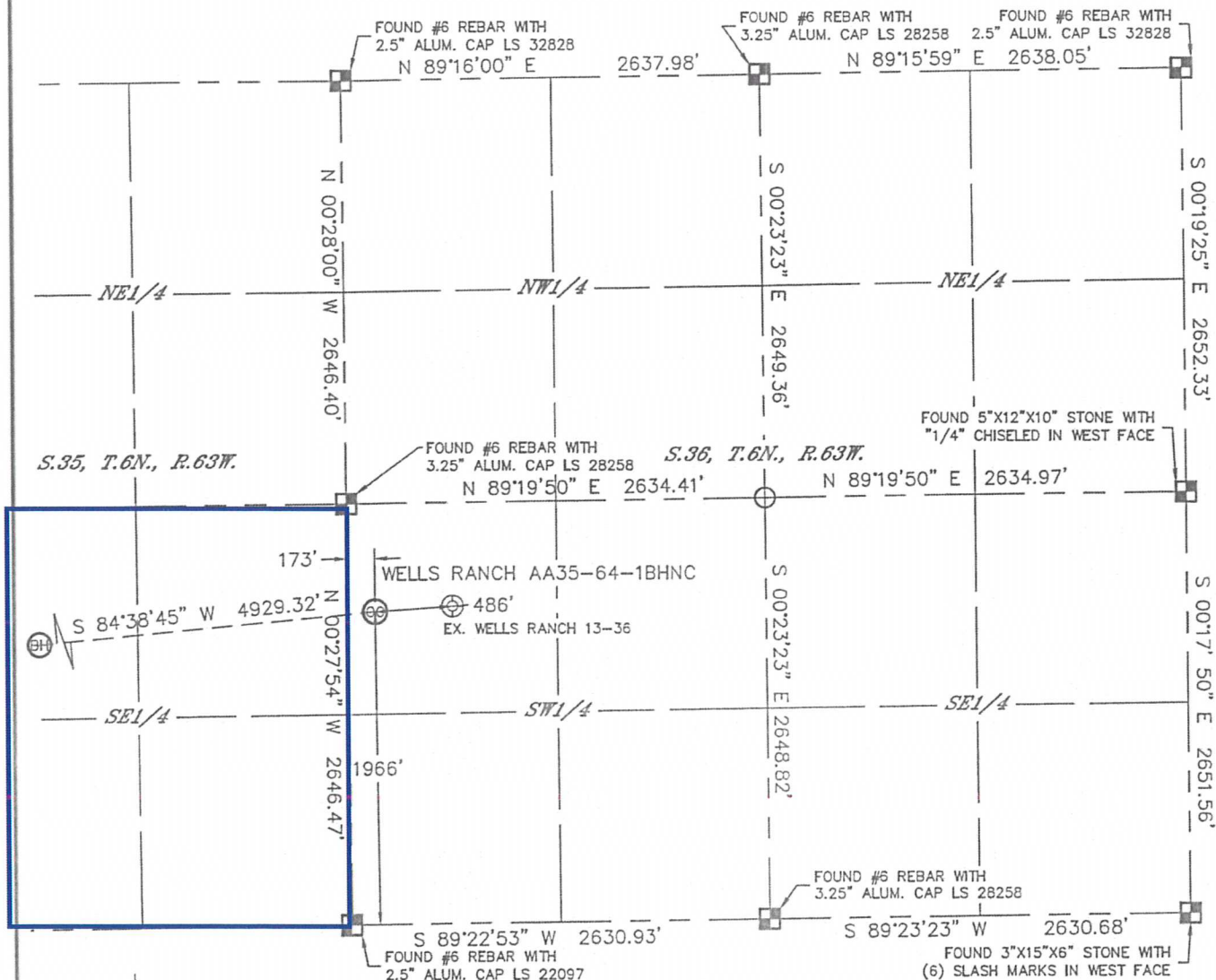


Lat40°, Inc. 1635 Foxtrail Drive, Suite 325 Loveland, CO 970-776-3321

WELL LOCATION CERTIFICATE

THIS MAP DOES NOT REPRESENT A BOUNDARY SURVEY

SECTION: 36
TOWNSHIP: 6N
RANGE: 63W



In accordance with a request from JACOB RICE with Noble Energy Inc. Lat40°, Inc. has determined the surface location of the WELLS RANCH AA35-64-1BHNC to be 1966' from the SOUTH line and 173' from the WEST line as measured at right angles from the section lines of Section 36, Township 6 North, Range 63 West and the bottom hole to be 1560' from the SOUTH line and 535' from the WEST line of Section 35, Township 6 North, Range 63 West of the Sixth Principal Meridian, County of Weld, State of Colorado.

I hereby state that this Well Location Certificate was prepared by me, or under my direct supervision, that the fieldwork was completed on 8/2/2013, for and on behalf of Noble Energy Inc. That this is not a Land Survey Plat or an Improvement Survey Plat, and that it is not to be relied upon for establishment of fence, building, or other future improvement lines.

SURFACE LOCATION
LAT: 40.44102N
LONG: 104.39410W
PDOP: 1.6
ELEV: 4772'
1/4, 1/4: NW1/4SW1/4

BOTTOM HOLE
LAT: 40.43992N
LONG: 104.41175W

- NOTE: 1"=1000'
- 1) Bearings shown are Grid Bearings of the Colorado State Plane Coordinate System, North Zone, North American Datum 1983/2007. The lineal dimensions as contained herein are based upon the "U.S. Survey Foot."
 - 2) Ground elevations are based on an observed GPS elevation (NAVD 1988 DATUM).
 - 3) IMPROVEMENTS: See LOCATION DRAWING for all visible improvements within 500' of disturbed area.
 - 4) SURFACE USE: RANGELAND
 - 5) INSTRUMENT OPERATOR: ADAM KELLY
 - 6) NEAREST EXISTING WELL: WELLS RANCH 13-36, 486'
- NEAREST CULTURAL ITEMS:
BUILDING: 5280'+
BUILDING UNIT: 5280'+
HIGH OCCUPANCY BUILDING UNIT: 5280'+
DESIGNATED OUTSIDE ACTIVITY AREA: 5280'+
PUBLIC ROAD: 5280'+
ABOVEGROUND UTILITY: 5280'+
RAILROAD: 5280'+
PROPERTY LINE: 173' WEST

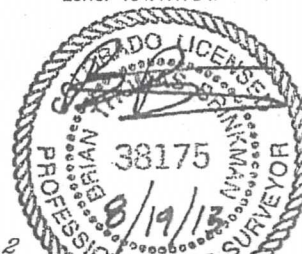
LEGEND

- = ALIQUOT MONUMENT AS DESCRIBED
- = CALCULATED POSITION

SHEET 1 OF 2

Brian T. Brinkman—On behalf of Lat40°, Inc.
Colorado Licensed Professional
Land Surveyor No. 38175

DATE: 8/19/2013
PROJECT#: 2013028



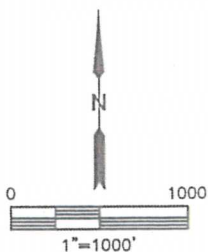
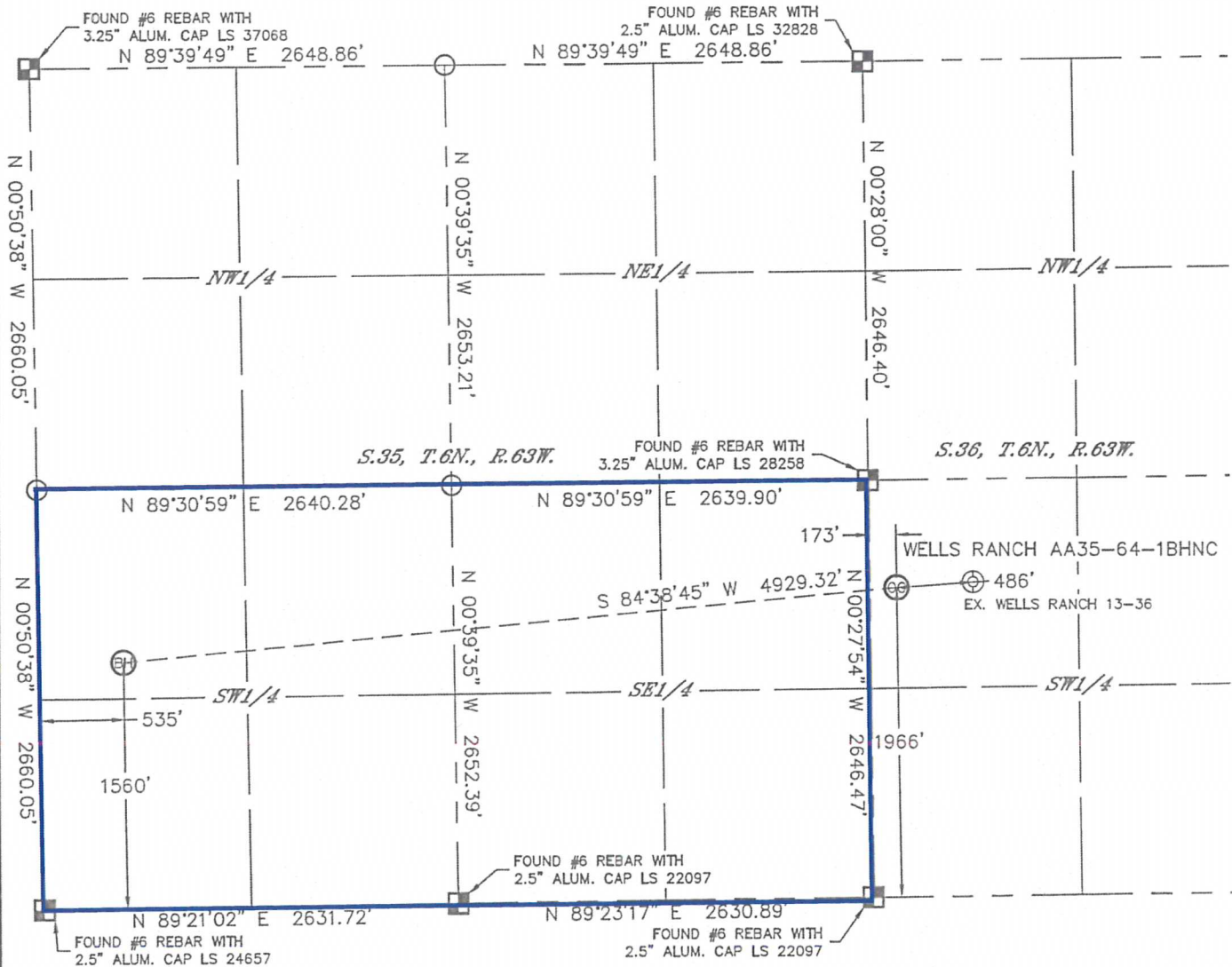


Lat40°, Inc. 1635 Foxtrail Drive, Suite 325 Loveland, CO 970-776-3321

WELL LOCATION CERTIFICATE

THIS MAP DOES NOT REPRESENT A BOUNDARY SURVEY

SECTION: 36
TOWNSHIP: 6N
RANGE: 63W



LEGEND

- = ALIQUOT MONUMENT AS DESCRIBED
- = CALCULATED POSITION

SHEET 2 OF 2

Brian T. Brinkman—On Behalf of Lat40°, Inc.
Colorado Licensed Professional
Land Surveyor No. 38175

DATE: 8/19/2013
PROJECT#: 2013028

