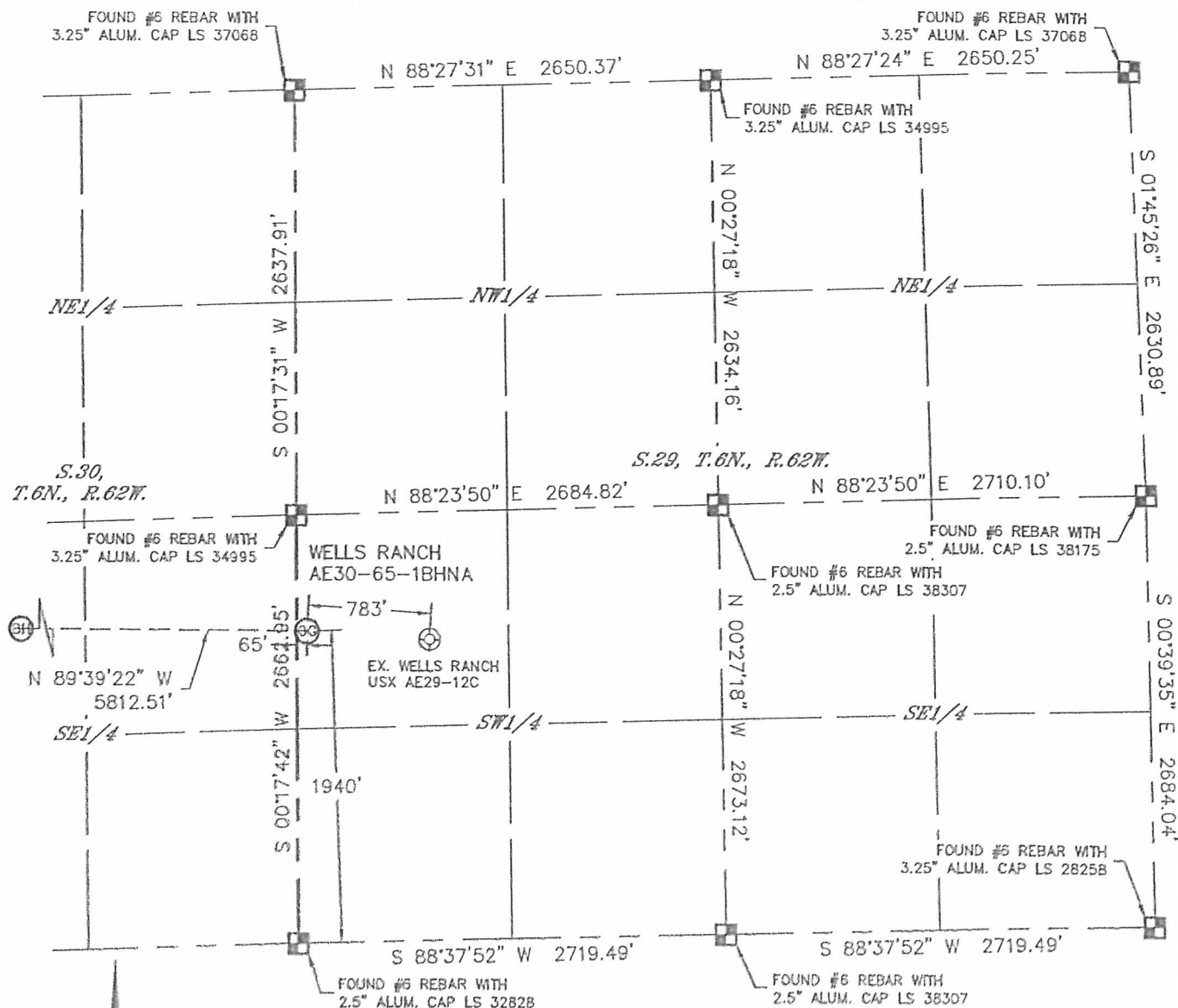


Lat40°, Inc. 1635 Foxtrail Drive, Suite 325 Loveland, CO 970-776-3321

# WELL LOCATION CERTIFICATE

SECTION: 29  
TOWNSHIP: 6N  
RANGE: 62W

THIS MAP DOES NOT REPRESENT A BOUNDARY SURVEY



In accordance with a request from Preston Foster with Noble Energy Inc., Lat40', Inc. has determined the surface location of the WELLS RANCH AF30-65-18HNA to be 1940' from the SOUTH line and 65' from the WEST line as measured at right angles from the section lines of Section 29, Township 6 North, Range 62 West and the bottom hole to be 2145' from the SOUTH line and 385' from the EAST line as measured at right angles from the section lines of Section 25, Township 6 North, Range 63 West of the Sixth Principal Meridian, County of Weld, State of Colorado.

I hereby state that this Well Location Certificate was prepared by me, or under my direct supervision, that the fieldwork was completed on 8/1/2013, for and on behalf of Nobis Energy Inc.. That this is not a Land Survey Plat or an Improvement Survey Plat, and that it is not to be relied upon for establishment of fence, building, or other future improvement lines.

NOTE:

1) Bearings shown are Grid Bearings of the Colorado State Plane Coordinate System, North Zone, North American Datum 1983/2007. The lined dimensions as contained herein are based upon the "U.S. Survey Foot."

2) Ground elevations are based on an observed GPS elevation (NAVD 1988 DATUM).  
3) IMPROVEMENTS: See LOCATION DRAWING for all visible improvements within 500' of disturbed area.

4) SURFACE USE: RANGELAND

5) INSTRUMENT OPERATOR: ADAM KELLY

6) NEAREST EXISTING WELL: WELLS RANCH USX AE28-12C, 783'  
NEAREST CULTURAL ITEMS:

BUILDING: 1210' SE

BUILDING UNIT: 5280'+  
HIGH OCCUPANCY BUILDING UNIT: 5280'+  
DESIGNATED OUTSIDE ACTIVITY AREA: 5280'+

PUBLIC ROAD: 5280'+  
ABOVEGROUND UTILITY: 5280'+

RAILROAD: 5280'+  
PROPERTY LINE: 65' W

## SURFACE LOCATION

LAT: 40.45574N

LONG: 104.35617°W

PDOP: 1.5

ELEV: 4757'

1/4, 1/4: NW1/4SW1/4

BOTTOM HOLE

LAT: 40.45604N

LONG: 104.37705°W

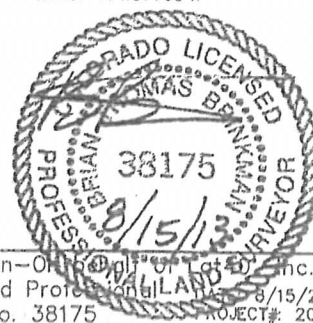
### LEGEND

 = ALIQUOT MONUMENT AS DESCRIBED

○ = CALCULATED POSITION

*SHEET 1 OF 3*

Brian T. Brinkman—Of the Order of Land Surveyors, Inc.  
Colorado Licensed Professional Land Surveyor No. 38175  
DATE: 8/15/2013  
PROJECT#: 2013028



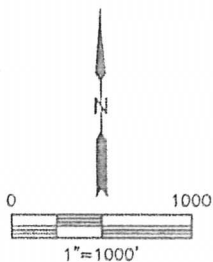
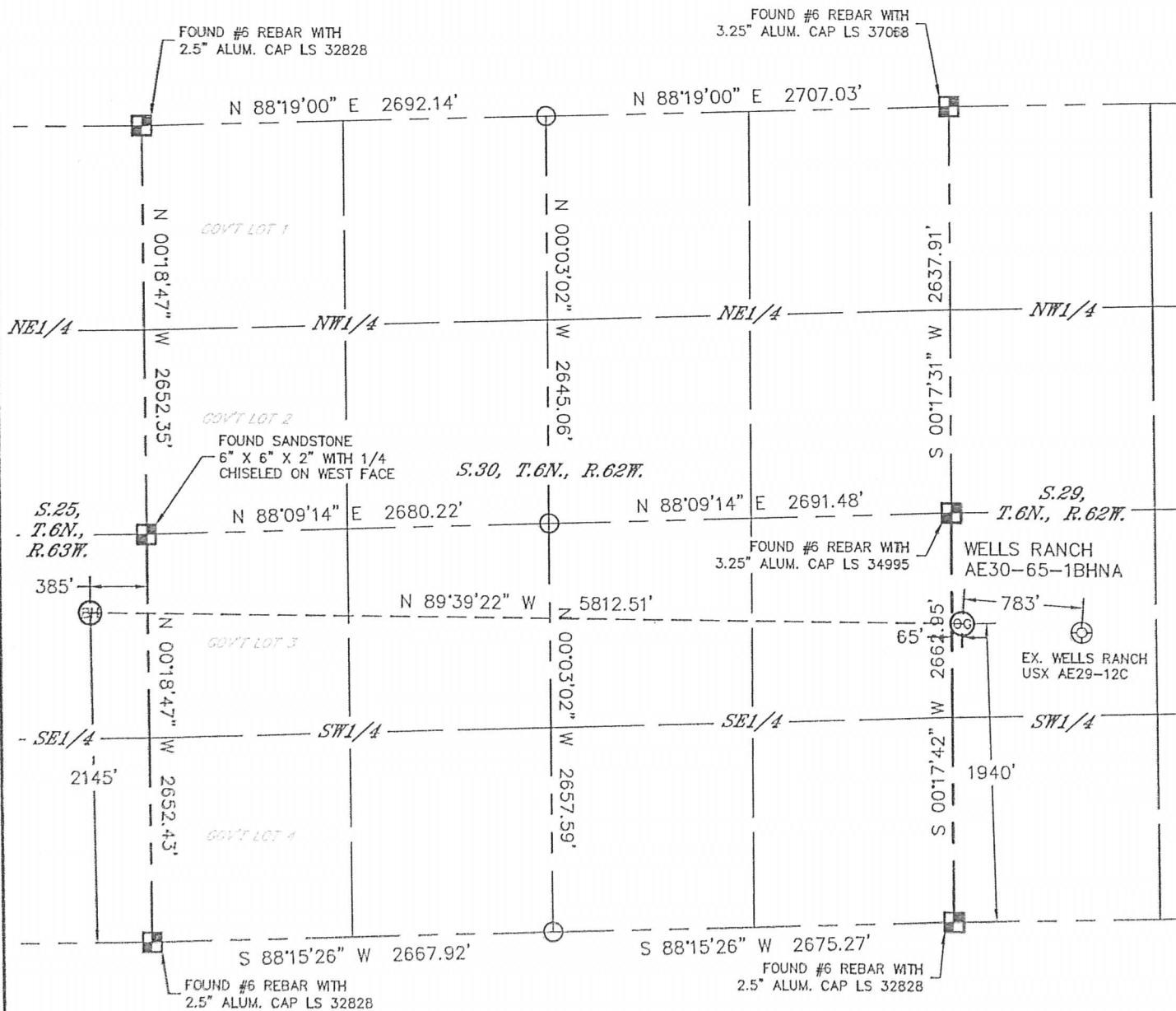


Lat40°, Inc. 1635 Foxtrail Drive, Suite 325 Loveland, CO 970-776-3321

# WELL LOCATION CERTIFICATE

THIS MAP DOES NOT REPRESENT A BOUNDARY SURVEY

SECTION: 29  
TOWNSHIP: 6N  
RANGE: 62W

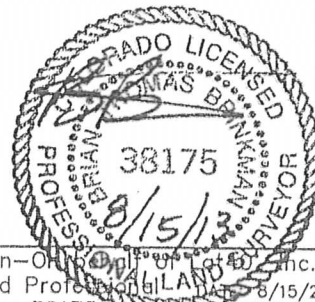


## LEGEND

- = ALIQUOT MONUMENT AS DESCRIBED
- = CALCULATED POSITION

## SHEET 2 OF 3

Brian T. Brinkman—Owner, Lat40°, Inc.  
Colorado Licensed Professional Land Surveyor No. 38175  
Date: 8/15/2013  
PROJECT#: 2013028



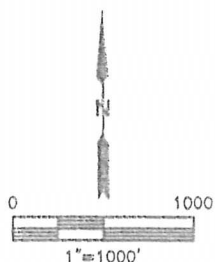
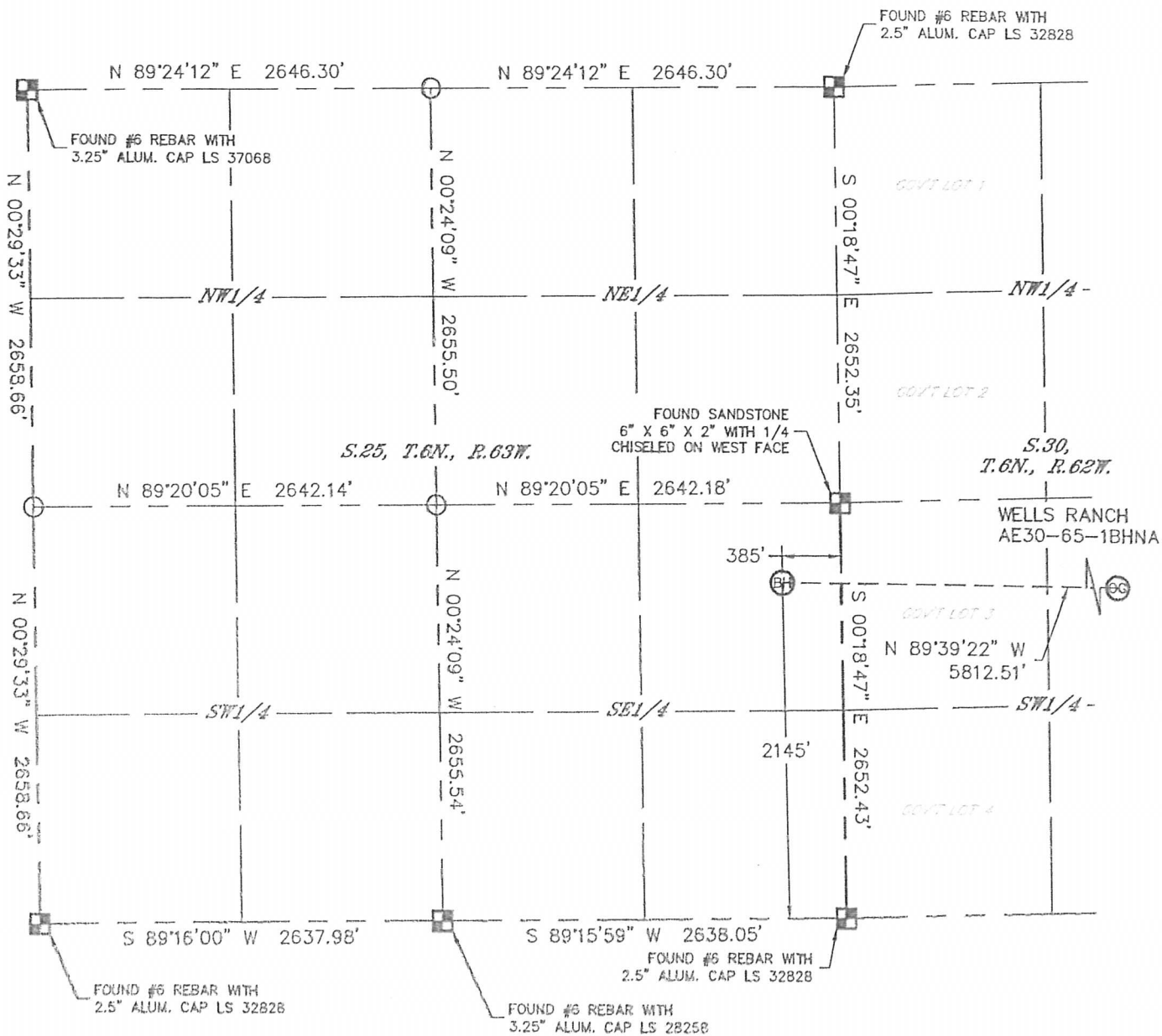


Lat40°, Inc. 1635 Foxtrail Drive, Suite 325 Loveland, CO 970-776-3321

# WELL LOCATION CERTIFICATE

THIS MAP DOES NOT REPRESENT A BOUNDARY SURVEY

SECTION: 29  
TOWNSHIP: 6N  
RANGE: 62W

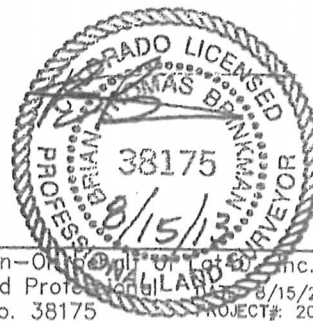


## LEGEND

- = ALIQUOT MONUMENT AS DESCRIBED
- = CALCULATED POSITION

## SHEET 3 OF 3

Brian T. Brinkman—Owner of Lat40°, Inc.  
Colorado Licensed Professional Land Surveyor No. 38175  
8/15/2013  
PROJECT#: 2013028



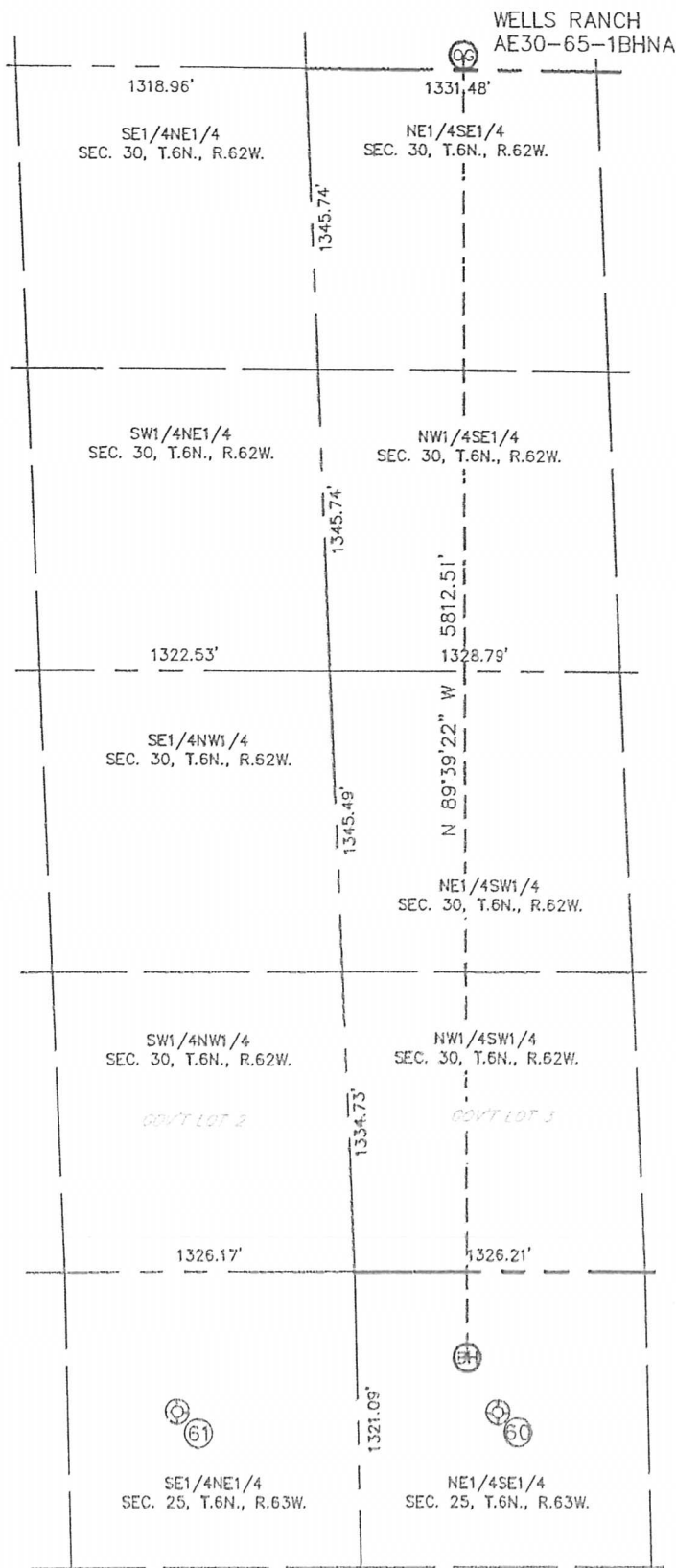


Lat40°, Inc. 1635 Foxtrail Drive, Suite 325 Loveland, CO 970-776-3321

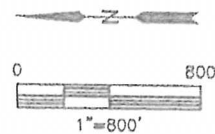
# SITE SKETCH

## WELLS RANCH AE30-65-1BHNA

SECTION: 29  
TOWNSHIP: 6N  
RANGE: 62W



WELL NO.	WELL NAME	SHL FOOTAGE				SHL LAT°	SHL LONG°	PDOP	ELEV (FT.)	1/4/1/4
60	WELLS RANCH USX AA 25-09	2012	FSL	631	FEL	40.45567	-104.37793	2.0	4718	NESE
61	WELLS RANCH USX AA 25-S	1829	FNL	626	FEL	40.45969	-104.37788	2.1	4745	SENE



DATE: 8/14/2013  
PROJECT#: 2013028