

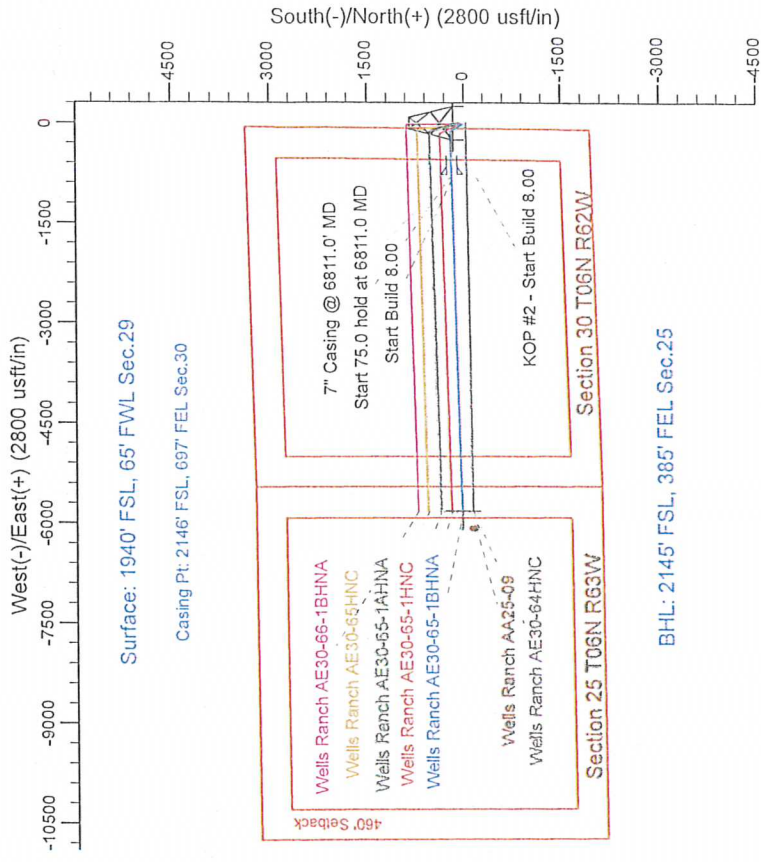
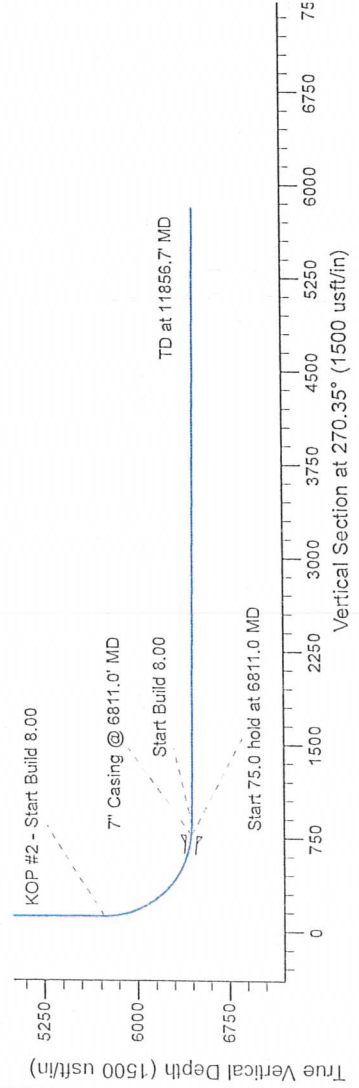
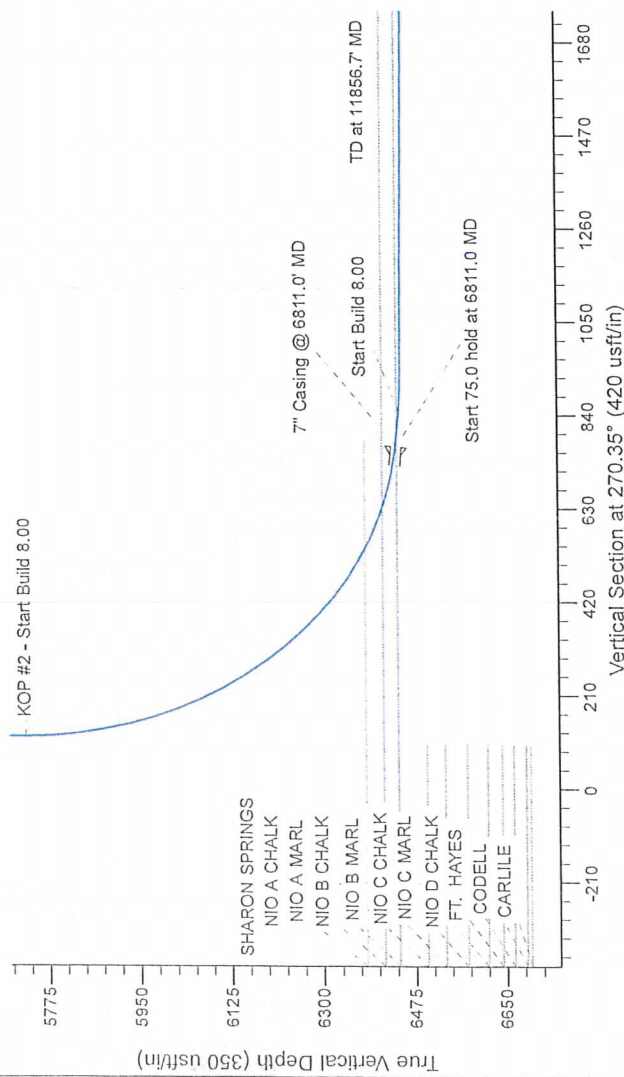
Project: Wattenberg Field
Site: AE (Sec.29-T06N-R62W) Weld County, CO
Well: Wells Ranch AE30-65-1BHNA
Wellbore: Original Drilling
Design: APD - Rev 0

Northern Region Drilling - Working

Geodetic System: US State Plane 1983
Datum: North American Datum 1983
Ellipsoid: GRS 1980
Zone: Colorado Northern Zone
System Datum: Mean Sea Level

SECTION DETAILS

Sec	MD	Inc	Azi	TVD	+N/S	+E/W	Dleg	TFace	VSect	Target
1	2000.0	0.00	0.00	0.0	0.0	0.0	0.00	0.00	0.0	
2	2603.1	12.06	330.10	2598.6	54.8	-31.5	2.00	330.10	31.9	
3	3101.8	0.00	330.10	3086.4	145.2	-83.5	0.00	0.00	84.3	
4	3704.9	0.00	0.00	3685.0	200.0	-115.0	2.00	180.00	116.2	
5	5748.5	0.00	0.00	5728.6	200.0	-115.0	0.00	0.00	116.2	
6	5811.0	85.00	268.34	6442.1	181.1	-768.5	8.00	268.34	769.6	
7	6886.0	85.00	268.34	6448.6	178.9	-843.2	0.00	0.00	844.2	
8	6943.5	89.60	268.34	6451.3	177.2	-900.6	8.00	0.00	901.6	
10	11856.7	89.60	268.34	6485.6	35.0	-6811.6	0.00	0.00	5811.7	Wells Ranch AE30-65-1BHNA BHL 2145FSL, 385FEL



Azimuths to Grid North
True North: -0.74°
Magnetic North: 7.59°
Magnetic Field Strength: 53020.0snT
Dip Angle: 67.10°
Date: 6/7/2013
Model: IGRF200510

WELL DETAILS: Wells Ranch AE30-65-1BHNA			
0.0	North	Ground Level: 4757.0	Longitude
0.0	0.0	Easting 3318297.74	Latitude -104.356170
Plan: APD - Rev 0 (Wells Ranch AE30-65-1BHNA/Original Drilling)			
Created By: Shalley Jewell		Date: 12-18, September 20 2013	
Checked:		Date:	
Reviewed:		Date:	
Approved:		Date:	