

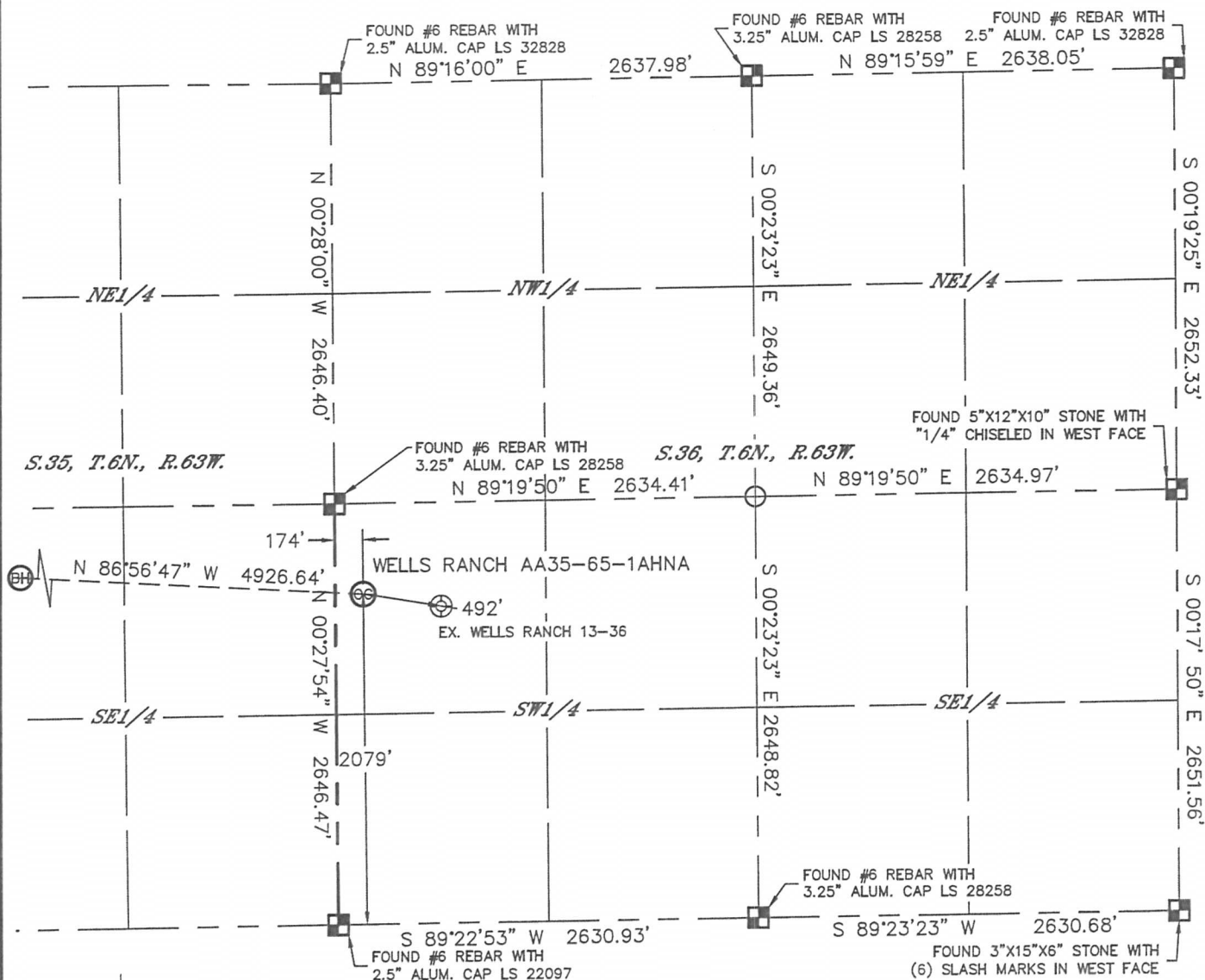


Lat40°, Inc. 1635 Foxtrail Drive, Suite 325 Loveland, CO 970-776-3321

WELL LOCATION CERTIFICATE

SECTION: 36
TOWNSHIP: 6N
RANGE: 63W

THIS MAP DOES NOT REPRESENT A BOUNDARY SURVEY



In accordance with a request from JACOB RICE with Noble Energy Inc. Lat40°, Inc. has determined the surface location of the WELLS RANCH AA35-65-1AHNA to be 2079' from the SOUTH line and 174' from the WEST line as measured at right angles from the section lines of Section 36, Township 6 North, Range 63 West and the bottom hole to be 2395' from the SOUTH line and 535' from the WEST line of Section 35, Township 6 North, Range 63 West of the Sixth Principal Meridian, County of Weld, State of Colorado.

I hereby state that this Well Location Certificate was prepared by me, or under my direct supervision, that the fieldwork was completed on 8/2/2013, for and on behalf of Noble Energy Inc. That this is not a Land Survey Plat or an Improvement Survey Plat, and that it is not to be relied upon for establishment of fence, building, or other future improvement lines.



NOTE: 1"=1000'

- 1) Bearings shown are Grid Bearings of the Colorado State Plane Coordinate System, North Zone, North American Datum 1983/2007. The lined dimensions as contained herein are based upon the "U.S. Survey Foot."
 - 2) Ground elevations are based on an observed GPS elevation (NAVD 1988 DATUM).
 - 3) IMPROVEMENTS: See LOCATION DRAWING for all visible improvements within 500' of disturbed area.
 - 4) SURFACE USE: RANGELAND
 - 5) INSTRUMENT OPERATOR: ADAM KELLY
 - 6) NEAREST EXISTING WELL: WELLS RANCH 13-36, 492'
- NEAREST CULTURAL ITEMS:
BUILDING: 5280'+
BUILDING UNIT: 5280'+
HIGH OCCUPANCY BUILDING UNIT: 5280'+
DESIGNATED OUTSIDE ACTIVITY AREA: 5280'+
PUBLIC ROAD: 5280'+
ABOVEGROUND UTILITY: 5280'+
RAILROAD: 5280'+
PROPERTY LINE: 174' WEST

SURFACE LOCATION

LAT: 40.44133°N
LONG: 104.39410°W
PDOP: 1.5
ELEV: 4775'
1/4, 1/4: NW1/4SW1/4

BOTTOM HOLE

LAT: 40.44222°N
LONG: 104.41175°W

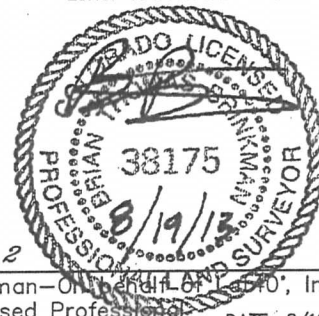
LEGEND

- = ALIQUOT MONUMENT AS DESCRIBED
- = CALCULATED POSITION

SHEET 1 OF 2

Brian T. Brinkman—Owner, Lat40°, Inc.
Colorado Licensed Professional
Land Surveyor No. 38175

DATE: 8/19/2013
PROJECT#: 2013028



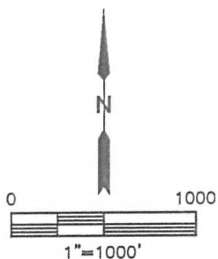
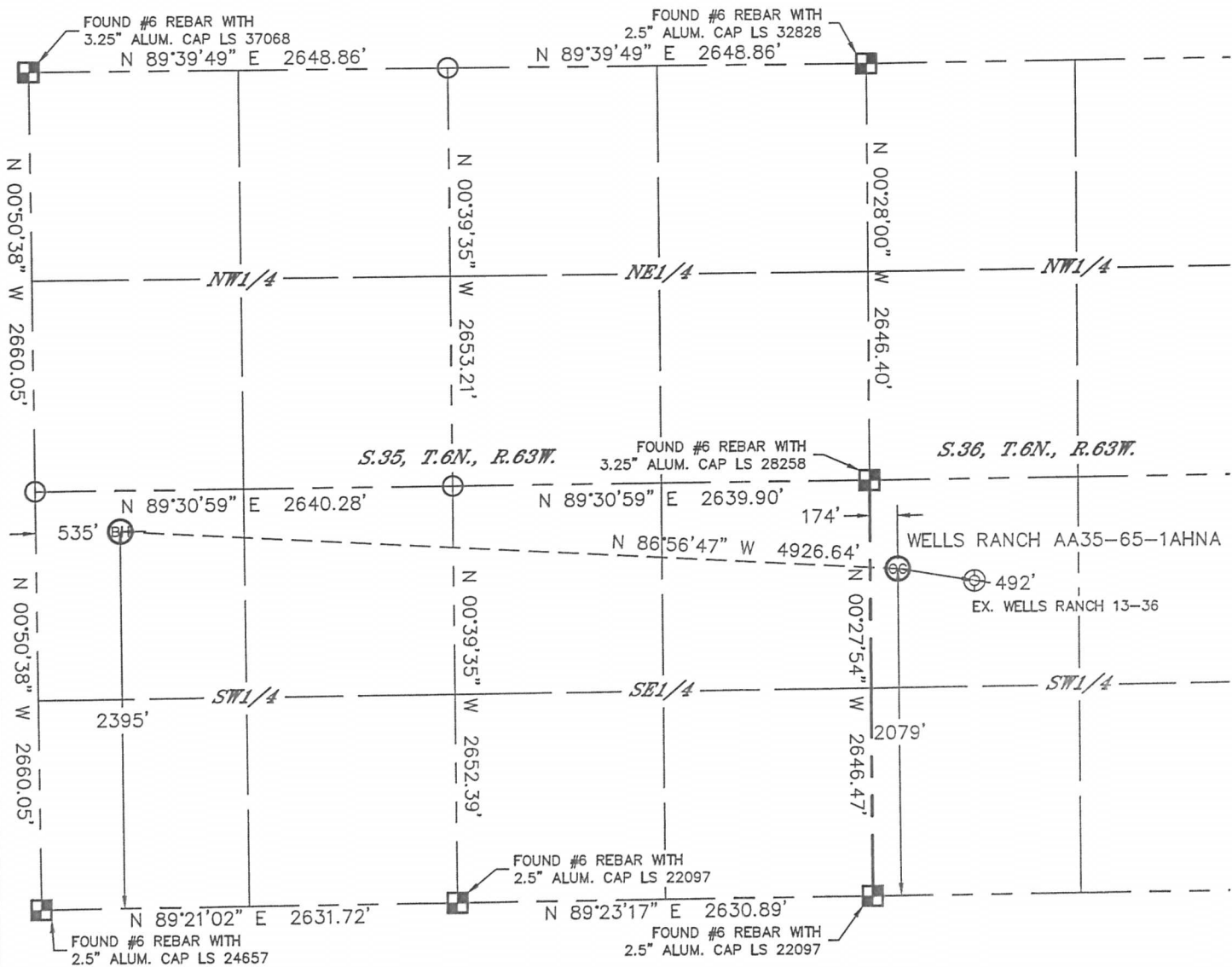


Lat40°, Inc. 1635 Foxtrail Drive, Suite 325 Loveland, CO 970-776-3321

WELL LOCATION CERTIFICATE

THIS MAP DOES NOT REPRESENT A BOUNDARY SURVEY

SECTION: 36
TOWNSHIP: 6N
RANGE: 63W



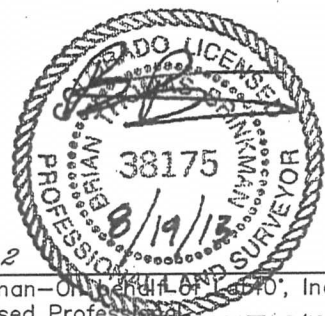
LEGEND

- = ALIQUOT MONUMENT AS DESCRIBED
- = CALCULATED POSITION

SHEET 2 OF 2

Brian T. Brinkman—On behalf of Lat40°, Inc.
Colorado Licensed Professional
Land Surveyor No. 38175

DATE: 8/19/2013
PROJECT#: 2013028



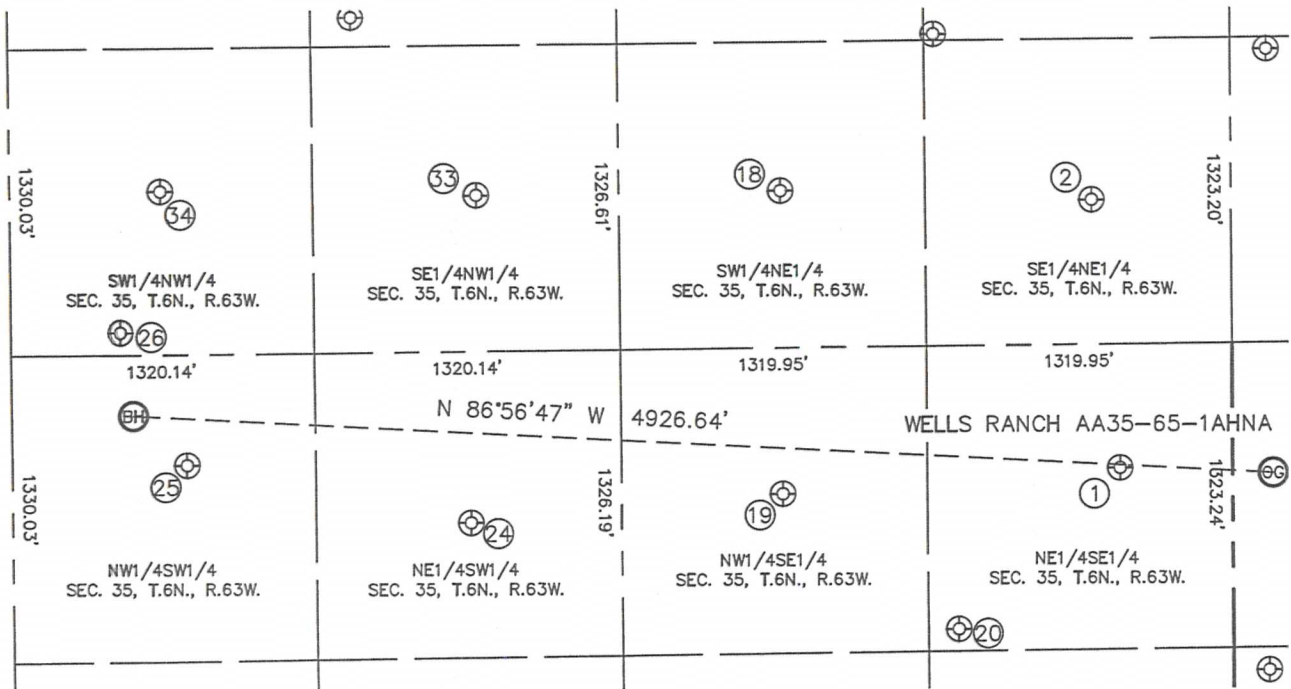


Lat40°, Inc. 1635 Foxtrail Drive, Suite 325 Loveland, CO 970-776-3321

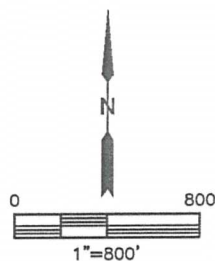
SITE SKETCH

WELLS RANCH AA35-65-1AHNA

SECTION: 36
TOWNSHIP: 6N
RANGE: 63W



WELL NO.	WELL NAME	SHL FOOTAGE				SHL LAT°	SHL LONG°	PDOP	ELEV (FT.)	1/4/1/4
1	WELLS RANCH USX AA 35-9	2107	FSL	487	FEL	40.44141	-104.39647	2.0	4754	NESE
2	WELLS RANCH USX AA 35-8	2023	FNL	603	FEL	40.44461	-104.39687	2.0	4774	SENE
18	WELLS RANCH-USX AA 35-7	1972	FNL	1946	FEL	40.44477	-104.40169	1.6	4774	SWNE
19	WELLS RANCH-USX AA 35-10	2016	FSL	1943	FEL	40.44117	-104.40170	1.6	4744	NWSE
20	WELLS RANCH-USX AA 35-23	1420	FSL	1187	FEL	40.43953	-104.39900	1.7	4756	NESE
24	WELLS RANCH USX AA 35-11	1910	FSL	1988	FWL	40.44088	-104.40653	1.9	4770	NESW
25	WELLS RANCH-USX AA 35-12	2178	FSL	763	FWL	40.44162	-104.41093	1.7	4785	NWSW
26	WELLS RANCH USX AA35-65H	2561	FNL	481	FWL	40.44321	-104.41195	1.8	4793	SWNW
33	WELLS RANCH USX AA35-06	1979	FNL	2027	FWL	40.44478	-104.40640	1.8	4769	SENE
34	WELLS RANCH USX AA 35-5	1951	FNL	662	FWL	40.44488	-104.41130	1.8	4789	SWNW



DATE: 8/19/2013
PROJECT#: 2013028