

---

# **CHEVRON - MID-CONTINENT EBIZ**

---

**SKR 598-08-BV-03  
SKINNER RIDGE  
Garfield County , Colorado**

**Cement Surface Casing**  
25-Sep-2013

**Post Job Report**

*The Road to Excellence Starts with Safety*

<b>Sold To #:</b> 338668		<b>Ship To #:</b> 3097911		<b>Quote #:</b>		<b>Sales Order #:</b> 900768210	
<b>Customer:</b> CHEVRON - MID-CONTINENT EBIZ				<b>Customer Rep:</b> Geiser, Greg			
<b>Well Name:</b> SKR			<b>Well #:</b> 598-08-BV-03			<b>API/UWI #:</b> 05-045-22096	
<b>Field:</b> SKINNER RIDGE		<b>City (SAP):</b> PARACHUTE		<b>County/Parish:</b> Garfield		<b>State:</b> Colorado	
<b>Lat:</b> N 39.622 deg. OR N 39 deg. 37 min. 18.019 secs.				<b>Long:</b> W 108.414 deg. OR W -109 deg. 35 min. 8.992 secs.			
<b>Contractor:</b> Ensign			<b>Rig/Platform Name/Num:</b> Ensign 122				
<b>Job Purpose:</b> Cement Surface Casing							
<b>Well Type:</b> Development Well				<b>Job Type:</b> Cement Surface Casing			
<b>Sales Person:</b> HIMES, JEFFREY				<b>Srvc Supervisor:</b> REEVES, BRANDON		<b>MBU ID Emp #:</b> 287883	
<b>Job Personnel</b>							
<b>HES Emp Name</b>	<b>Exp Hrs</b>	<b>Emp #</b>	<b>HES Emp Name</b>	<b>Exp Hrs</b>	<b>Emp #</b>	<b>HES Emp Name</b>	<b>Exp Hrs</b>
ANDERSON, ADAM S	10.0	456683	LYNGSTAD, FREDRICK D	10.0	403742	REEVES, BRANDON W	10.0
ROMKEE, DALE Alan	10.0	488215					
<b>Equipment</b>							
<b>HES Unit #</b>	<b>Distance-1 way</b>	<b>HES Unit #</b>	<b>Distance-1 way</b>	<b>HES Unit #</b>	<b>Distance-1 way</b>	<b>HES Unit #</b>	<b>Distance-1 way</b>
10616651C	120 mile	10784064	120 mile	10867094	120 mile	10897925	120 mile
11006314	120 mile	11583932	120 mile	11808827	120 mile		
<b>Job Hours</b>							
<b>Date</b>	<b>On Location Hours</b>	<b>Operating Hours</b>	<b>Date</b>	<b>On Location Hours</b>	<b>Operating Hours</b>	<b>Date</b>	<b>On Location Hours</b>
09/25/2013	10	2					
<b>TOTAL</b>		<i>Total is the sum of each column separately</i>					
<b>Job</b>				<b>Job Times</b>			
<b>Formation Name</b>				<b>Date</b>			
<b>Formation Depth (MD)</b>				<b>Time</b>			
<b>Top</b>				<b>Time Zone</b>			
<b>Bottom</b>				<b>Called Out</b>			
<b>Form Type</b>				<b>On Location</b>			
<b>Job depth MD</b>				<b>Job Started</b>			
<b>Water Depth</b>				<b>Job Completed</b>			
<b>Perforation Depth (MD)</b>				<b>Departed Loc</b>			
<b>From</b>				<b>To</b>			
<b>Well Data</b>							
<b>Description</b>	<b>New / Used</b>	<b>Max pressure psig</b>	<b>Size in</b>	<b>ID in</b>	<b>Weight lbm/ft</b>	<b>Thread</b>	<b>Grade</b>
<b>Sales/Rental/3<sup>rd</sup> Party (HES)</b>							
<b>Description</b>				<b>Qty</b>	<b>Qty uom</b>	<b>Depth</b>	<b>Supplier</b>
CMT CASING EQUIPMENT BOM				1	JOB		
SHOE,FLT,8-5/8 8 RD,2-3/4 SUPER SEAL				1	EA		
CLR,FLT,8-5/8 8RD 24-44PPF,2-3/4SSII				1	EA		
CENTRALIZER ASSY - API - 8-5/8 CSG X				13	EA		
CLAMP - LIMIT - 8-5/8 - HINGED -				2	EA		
KIT,HALL WELD-A				2	EA		
<b>Tools and Accessories</b>							
<b>Type</b>	<b>Size</b>	<b>Qty</b>	<b>Make</b>	<b>Depth</b>	<b>Type</b>	<b>Size</b>	<b>Qty</b>
Guide Shoe					Packer		
Float Shoe					Bridge Plug		
Float Collar					Retainer		
Insert Float							
Stage Tool							
<b>Miscellaneous Materials</b>							

Sold To # : 338668

Ship To # :3097911

Quote # :

Sales Order # : 900768210

SUMMIT Version: 7.3.0106

Thursday, October 10, 2013 12:46:00

Gelling Agt		Conc		Surfactant		Conc		Acid Type		Qty		Conc	%
Treatment Fld		Conc		Inhibitor		Conc		Sand Type		Size		Qty	

Fluid Data										
Stage/Plug #: 1										
Fluid #	Stage Type	Fluid Name	Qty	Qty uom	Mixing Density lbm/gal	Yield ft3/sk	Mix Fluid Gal/sk	Rate bbl/min	Total Mix Fluid Gal/sk	
1	Water Spacer with Dye		30.00	bbl	8.34	.0	.0	4.0		
	0.0625 lbm/bbl	RHODAMINE RED LIQUID DYE # 2 (101201084)								
	1 lbm/bbl	POLY-E-FLAKE (101216940)								
2	VariCem GJ1 Lead Cement	VARICEM (TM) CEMENT (452009)	193.0	sacks	12.3	2.38	13.75	6.0	13.75	
	13.75 Gal	FRESH WATER								
3	VariCem GJ1 Tail Cement	VARICEM (TM) CEMENT (452009)	215.0	sacks	12.8	2.11	11.75	6.0	11.75	
	11.75 Gal	FRESH WATER								
4	Displacement		61.00	bbl	.	.0	.0	6.0		
		FRESH WATER								
Calculated Values		Pressures		Volumes						
Displacement	61.5	Shut In: Instant		Lost Returns	NO	Cement Slurry	162.6	Pad		
Top Of Cement	SURFACE	5 Min		Cement Returns	60	Actual Displacement	61	Treatment		
Frac Gradient		15 Min		Spacers	30	Load and Breakdown		Total Job		
Rates										
Circulating		Mixing	6	Displacement	6	Avg. Job	6			
Cement Left In Pipe	Amount	41.89 ft	Reason	Shoe Joint						
Frac Ring # 1 @	ID	Frac ring # 2 @	ID	Frac Ring # 3 @	ID	Frac Ring # 4 @	ID			
The Information Stated Herein Is Correct				Customer Representative Signature						

*The Road to Excellence Starts with Safety*

<b>Sold To #:</b> 338668		<b>Ship To #:</b> 3097911		<b>Quote #:</b>		<b>Sales Order #:</b> 900768210	
<b>Customer:</b> CHEVRON - MID-CONTINENT EBIZ				<b>Customer Rep:</b> Geiser, Greg			
<b>Well Name:</b> SKR			<b>Well #:</b> 598-08-BV-03			<b>API/UWI #:</b> 05-045-22096	
<b>Field:</b> SKINNER RIDGE		<b>City (SAP):</b> PARACHUTE		<b>County/Parish:</b> Garfield		<b>State:</b> Colorado	
<b>Legal Description:</b>							
<b>Lat:</b> N 39.622 deg. OR N 39 deg. 37 min. 18.019 secs.				<b>Long:</b> W 108.414 deg. OR W -109 deg. 35 min. 8.992 secs.			
<b>Contractor:</b> Ensign			<b>Rig/Platform Name/Num:</b> Ensign 122				
<b>Job Purpose:</b> Cement Surface Casing						<b>Ticket Amount:</b>	
<b>Well Type:</b> Development Well			<b>Job Type:</b> Cement Surface Casing				
<b>Sales Person:</b> HIMES, JEFFREY			<b>Srv Supervisor:</b> REEVES, BRANDON			<b>MBU ID Emp #:</b> 287883	

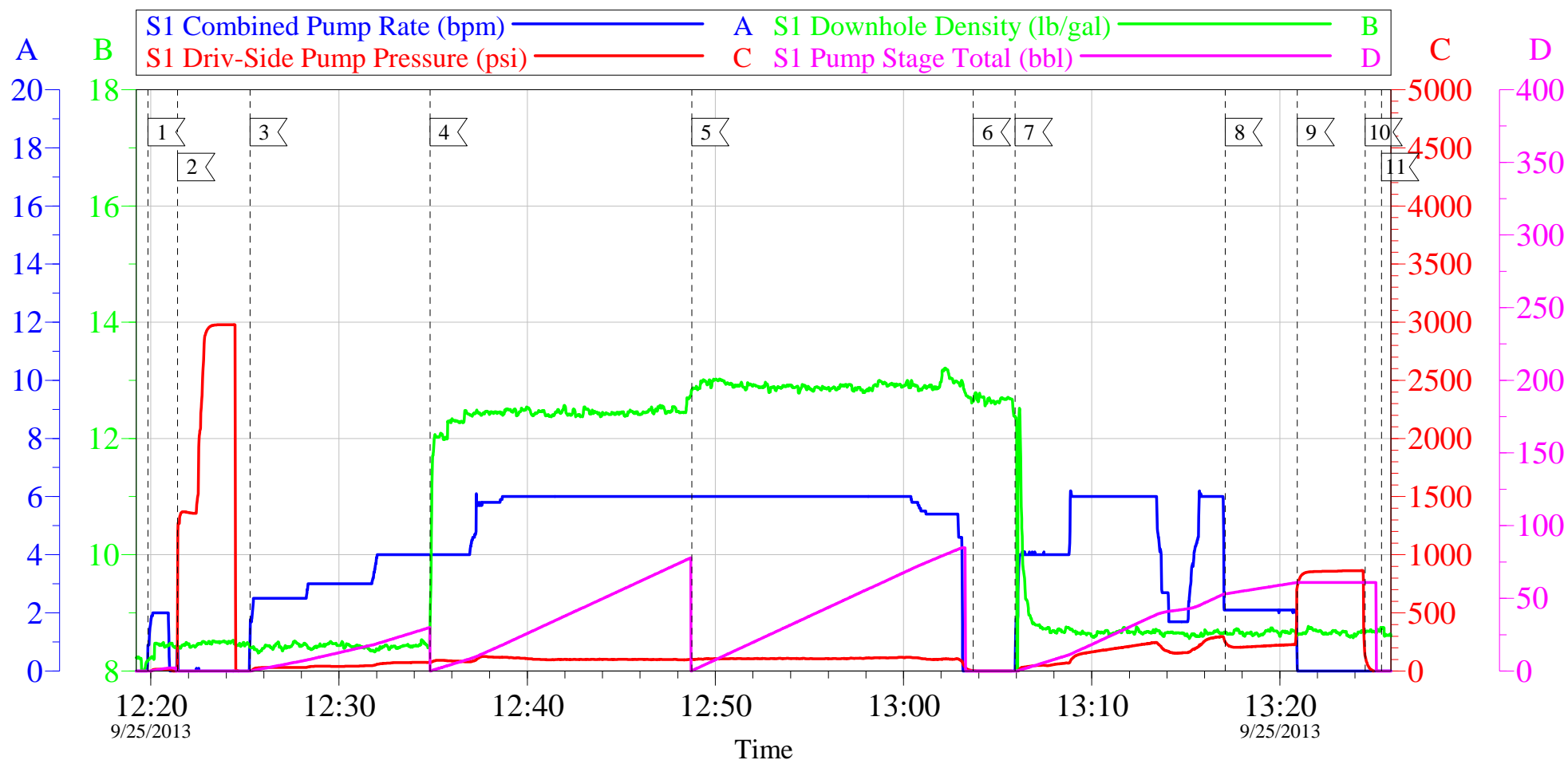
Activity Description	Date/Time	Cht #	Rate bbl/min	Volume bbl		Pressure psig		Comments
				Stage	Total	Tubing	Casing	
Call Out	09/25/2013 00:00							
Depart from Service Center or Other Site	09/25/2013 02:15							
Arrive At Loc	09/25/2013 03:40							REQUESTED ON LOCATION TIME WAS 04:00
Assessment Of Location Safety Meeting	09/25/2013 10:30							
Other	09/25/2013 11:00							SPOT EQUIPMENT
Pre-Rig Up Safety Meeting	09/25/2013 11:10							
Rig-Up Equipment	09/25/2013 11:20							
Pre-Job Safety Meeting	09/25/2013 12:00							
Start Job	09/25/2013 12:19							TD-1020' TP-1009' SJ-41.89' MW-9.1 PPG. HOLE-12 1/4" CASING-8 5/8" 24 PPF. J-55
Test Lines	09/25/2013 12:21					2990.0		
Pump Spacer 1	09/25/2013 12:25		4	30			100.0	FRESH WATER SPACER WITH RED DYE AND POLY FLAKE
Pump Lead Cement	09/25/2013 12:34		6	81.8			140.0	193 SKS. @ 12.3 PPG. 2.38 YIELD 13.75 GAL/SK.
Pump Tail Cement	09/25/2013 12:48		6	80.8			135.0	215 SKS. @ 12.8 PPG. 2.11 YIELD 11.75 GAL/SK
Drop Top Plug	09/25/2013 13:03							
Pump Displacement	09/25/2013 13:06		6				315.0	FRESH WATER DISPLACEMENT.

## Cementing Job Log

Activity Description	Date/Time	Cht #	Rate bbl/min	Volume bbl		Pressure psig		Comments
				Stage	Total	Tubing	Casing	
Slow Rate	09/25/2013 13:16		2	51			220.0	SLOW RATE TO LAND THE PLUG.
Bump Plug	09/25/2013 13:20		2	61			240.0	PLUG LANDED AT 240 PSI. PRESSURED UP TO 860 PSI.
Check Floats	09/25/2013 13:25							FLOATS HELD. .5 BBL. BACK TO THE CEMENT PUMP.
End Job	09/25/2013 13:26							THE WELL WAS CIRCULATED BEFORE STARTING THE JOB. GOOD CIRCULATION THROUGHOUT THE JOB. THE PIPE WAS NOT RECIPROCATED. CIRCULATED 60 BBLS. OF CEMENT TO SURFACE.
Comment	09/25/2013 13:27							THANK YOU FOR USING HALLIBURTON CEMENTING. BRANDON REEVES AND CREW.
Comment	09/25/2013 13:38							TOPOUT CEMENT, TON MILES AND CUBIC FEET FOR THE TOPOUT CEMENT WERE TAKEN OFF OF THE TICKET.

# CHEVRON SKINNER RIDGE 598-08-BV-03

## 8 5/8" SURFACE



Local Event Log			
Intersection		SDPP	Intersection
1 START JOB	12:19:50	-8.696	2 TEST LINES
4 PUMP LEAD CEMENT	12:34:50	75.30	5 PUMP TAIL CEMENT
7 PUMP DISPLACEMENT	13:05:56	-3.916	8 SLOW RATE
10 CHECK FLOATS	13:24:32	128.6	11 END JOB
			3 PUMP H2O SPACER
			6 DROP TOP PLUG
			9 LAND PLUG
			12:25:16 -0.696
			13:03:43 3.304
			13:20:55 710.6
			13:25:24 -8.696

Customer: CHEVRON  
 Well Description: SKINNER RIDGE 598-08-BV-03  
 Supervisor: BRANDON REEVES

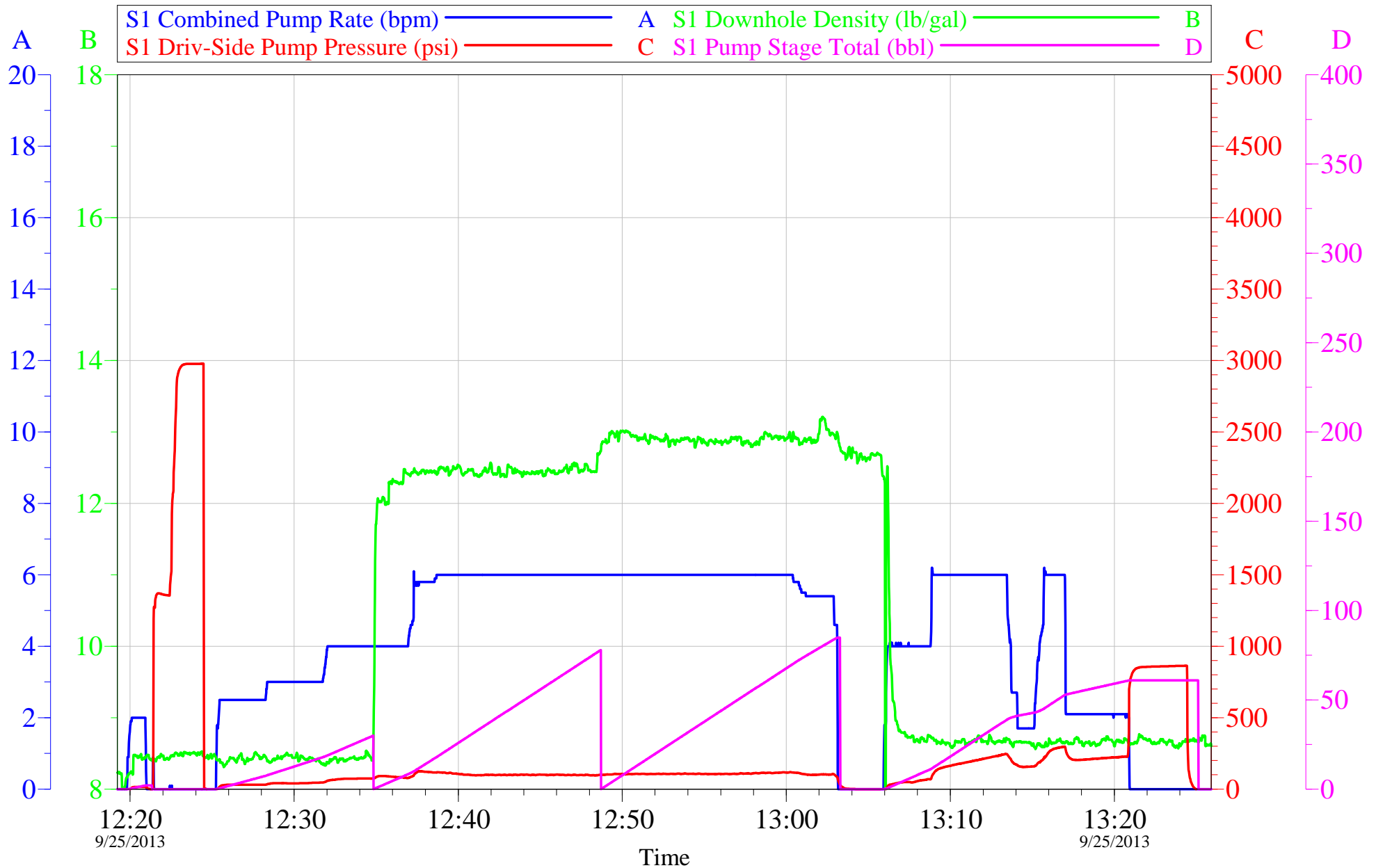
Job Date: 25-Sep-2013  
 Job Type: 8 5/8" SURFACE  
 Compant Rep: GREG GEISER

Sales Order #: 900768210  
 ADC Used: YES  
 Elite/Operator: 4/ADAM ANDERSON

OptiCem v6.4.10  
 25-Sep-13 13:30

# CHEVRON SKINNER RIDGE 598-08-BV-03

## 8 5/8" SURFACE



Customer: CHEVRON	Job Date: 25-Sep-2013	Sales Order #: 900768210
Well Description: SKINNER RIDGE 598-08-BV-03	Job Type: 8 5/8" SURFACE	ADC Used: YES
Supervisor: BRANDON REEVES	Compant Rep: GREG GEISER	Elite/Operator: 4/ADAM ANDERSON

OptiCem v6.4.10  
25-Sep-13 13:30

<b>Sales Order #:</b> 900768210	<b>Line Item:</b> 10	<b>Survey Conducted Date:</b> 9/25/2013
<b>Customer:</b> CHEVRON - MID-CONTINENT EBIZ		<b>Job Type (BOM):</b> CMT SURFACE CASING BOM
<b>Customer Representative:</b> GREG GEISER		<b>API / UWI: (leave blank if unknown)</b> 05-045-22096
<b>Well Name:</b> SKR		<b>Well Number:</b> 598-08-BV-03
<b>Well Type:</b> Development Well	<b>Well Country:</b> United States of America	
<b>H2S Present:</b>	<b>Well State:</b> Colorado	<b>Well County:</b> Garfield

Dear Customer,

We hope that you were satisfied with the service quality of this job performed by Halliburton. It is the aim of our management and service personnel to deliver equipment and service of a standard unmatched in the service sector of the energy industry.

Please take the time to let us know if our performance met with your satisfaction. Please be as critical as possible to ensure we constantly improve our service. Your comments are of great value to us and are intended for the exclusive use of Halliburton.

### CUSTOMER SATISFACTION SURVEY

CATEGORY	CUSTOMER SATISFACTION RESPONSE	
Survey Conducted Date	The date the survey was conducted	9/25/2013
Survey Interviewer	The survey interviewer is the person who initiated the survey.	BRANDON REEVES (HBT9414)
Customer Participation	Did the customer participate in this survey? (Y/N)	Yes
Customer Representative	Enter the Customer representative name	GREG GEISER
HSE	Was our HSE performance satisfactory? Circle Y or N	Yes
Equipment	Were you satisfied with our Equipment? Circle Y or N	Yes
Personnel	Were you satisfied with our people? Circle Y or N	Yes
Customer Comment	Customer's Comment	

<b>CUSTOMER SIGNATURE</b>
---------------------------



<b>Sales Order #:</b> 900768210	<b>Line Item:</b> 10	<b>Survey Conducted Date:</b> 9/25/2013
<b>Customer:</b> CHEVRON - MID-CONTINENT EBIZ		<b>Job Type (BOM):</b> CMT SURFACE CASING BOM
<b>Customer Representative:</b> GREG GEISER		<b>API / UWI: (leave blank if unknown)</b> 05-045-22096
<b>Well Name:</b> SKR		<b>Well Number:</b> 598-08-BV-03
<b>Well Type:</b> Development Well	<b>Well Country:</b> United States of America	
<b>H2S Present:</b>	<b>Well State:</b> Colorado	<b>Well County:</b> Garfield

*KEY PERFORMANCE INDICATORS*

General	
<b>Survey Conducted Date</b>	9/25/2013
The date the survey was conducted	

Cementing KPI Survey	
<b>Type of Job</b> Select the type of job. (Cementing or Non-Cementing)	0
<b>Select the Maximum Deviation range for this Job</b> What is the highest deviation for the job you just completed? This may not be the maximum well deviation.	Vertical
<b>Total Operating Time (hours)</b> Total Operating Hours Including Rig-up, Pumping, Rig-down. Enter in decimal format.	2
<b>HSE Incident, Accident, Injury</b> HSE Incident, Accident, Injury. This should be recordable incidents only.	No
<b>Was the job purpose achieved?</b> Was the job delivered correctly as per customer agreed design?	Yes
<b>Operating Hours (Pumping Hours)</b> Total number of hours pumping fluid on this job. Enter in decimal format.	1
<b>Customer Non-Productive Rig Time (hrs)</b> Lost time due to Halliburton in the start, execution, or completion of an ordered service or product, or delays in a follow-on service. Enter in decimal format. 0 if none.	0
<b>Type of Rig Classification Job Was Performed</b> Type Of Rig (classification) Job Was Performed On	Drilling Rig (Portable)
<b>Number Of JSAs Performed</b> Number Of Jsas Performed	6
<b>Number of Unplanned Shutdowns</b> Unplanned shutdown is when injection stops for any period of time.	0
<b>Was this a Primary Cement Job (Yes / No)</b>	Yes

<b>Sales Order #:</b> 900768210	<b>Line Item:</b> 10	<b>Survey Conducted Date:</b> 9/25/2013
<b>Customer:</b> CHEVRON - MID-CONTINENT EBIZ		<b>Job Type (BOM):</b> CMT SURFACE CASING BOM
<b>Customer Representative:</b> GREG GEISER		<b>API / UWI: (leave blank if unknown)</b> 05-045-22096
<b>Well Name:</b> SKR		<b>Well Number:</b> 598-08-BV-03
<b>Well Type:</b> Development Well	<b>Well Country:</b> United States of America	
<b>H2S Present:</b>	<b>Well State:</b> Colorado	<b>Well County:</b> Garfield

Primary Cement Job= Casing job, Liner job, or Tie-back job.	
<b>Did We Run Wiper Plugs?</b> Did We Run Top And Bottom Casing Wiper Plugs?	Top
<b>Mixing Density of Job Stayed in Designed Density Range (0-100%)</b> Density Range defined as +/- .20 ppg. Calculation: Total BBLs cement mixed at designed density divided by total BBLs of cement multiplied by 100	95
<b>Was Automated Density Control Used?</b> Was Automated Density Control (ADC) Used ?	Yes
<b>Pump Rate (percent) of Job Stayed At Designed Pump Rate</b> Pump Rate range defined as +/- 1bbl/min. Calculation: Total BBLs of fluid pumped at the designed rate divided by Total BBLs of fluid pumped, multiplied by 100	95
<b>Nbr of Remedial Sqz Jobs Rqd - Competition</b> Number Of Remedial Squeeze Jobs Required After Primary Job Performed By Competition	0
<b>Nbr of Remedial Plug Jobs Rqd - HES</b> Number Of Remedial Plug Jobs Needed After Primary Plug Pumped By HES	0
<b>Nbr of Remedial Sqz Jobs Rqd - HES</b> Number Of Remedial Squeeze Jobs Required After Primary Job Performed By HES	0