
CHEVRON - MID-CONTINENT EBIZ

**Skinner Ridge 589-08-BV-02
SKINNER RIDGE
Garfield County , Colorado**

Cement Production Casing
18-Sep-2013

Job Site Documents

The Road to Excellence Starts with Safety

Sold To #: 338668	Ship To #: 3097910	Quote #:	Sales Order #: 900741350
Customer: CHEVRON - MID-CONTINENT EBIZ		Customer Rep: Geiser, Greg	
Well Name: Skinner Ridge	Well #: 589-08-BV-02	API/UWI #: 05-045-22132	
Field: SKINNER RIDGE	City (SAP): PARACHUTE	County/Parish: Garfield	State: Colorado
Lat: N 39.622 deg. OR N 39 deg. 37 min. 18.109 secs.		Long: W 108.414 deg. OR W -109 deg. 35 min. 8.959 secs.	
Contractor: ENSIGN	Rig/Platform Name/Num: 122		
Job Purpose: Cement Production Casing			
Well Type: Development Well	Job Type: Cement Production Casing		
Sales Person: GROFF, THEODORE	Srvc Supervisor: PONDER, THOMAS	MBU ID Emp #: 427112	

Job Personnel

HES Emp Name	Exp Hrs	Emp #	HES Emp Name	Exp Hrs	Emp #	HES Emp Name	Exp Hrs	Emp #
BRENNECKE, ANDREW Bailey	28.0	486345	CAMPBELL, DAVID Arthur	28	544403	CARTER, ERIC Earl	9	345598
LINN, PAUL Andrew	9	479143	PONDER, THOMAS Lynn	28	427112	ROMKEE, DALE Alan	18	488215
SCHANZ, ANDREW Jacob	9	544399	SINCLAIR, DAN J	9	338784	WOLFE, JON P	28	485217

Equipment

HES Unit #	Distance-1 way	HES Unit #	Distance-1 way	HES Unit #	Distance-1 way	HES Unit #	Distance-1 way
10867094	120 mile	10872429	120 mile	11360883	120 mile	11583931	120 mile
11808833	120 mile						

Job Hours

Date	On Location Hours	Operating Hours	Date	On Location Hours	Operating Hours	Date	On Location Hours	Operating Hours
9/16/2013	18	0	9/17/2013	11	0	9/18/2013	7	4
TOTAL	Total is the sum of each column separately							

Job

Formation Name	Formation Depth (MD)	Top	Bottom	Form Type	Job depth MD	Job Depth TVD	Water Depth	Perforation Depth (MD)	From	To	Deparated Loc
				BHST	4666. ft	4666. ft					

Well Data

Description	New / Used	Max pressure psig	Size in	ID in	Weight lbf/ft	Thread	Grade	Top MD ft	Bottom MD ft	Top TVD ft	Bottom TVD ft
7-7/8" Open Hole				7.875				1000.	4500.	1000.	4500.
4-1/2" Production Casing	New		4.5	4.	11.6		N-80	.	4500.	.	4500.
8-5/8" Surface Casing	New		8.625	8.097	24.		J-55	.	1000.		

Sales/Rental/3rd Party (HES)

Description	Qty	Qty uom	Depth	Supplier
CMT CASING EQUIPMENT BOM	1	JOB		
CLR,FLT,4-1/2,BTC,11.6-15.1PPF,P-110,2-3	1	EA		
SHOE,FLT,4-1/2 8RD,2-3/4 SSII	1	EA		
CLAMP - LIMIT - 4-1/2 - HINGED -	2	EA		
CENTRALIZER ASSY - API - 4-1/2 CSG X	55	EA		
KIT,HALL WELD-A	1	EA		

Tools and Accessories

Type	Size	Qty	Make	Depth	Type	Size	Qty	Make	Depth	Type	Size	Qty	Make
Guide Shoe					Packer					Top Plug	4.5	1	HES
Float Shoe	4.5	1	HES	4666	Bridge Plug					Bottom Plug			

Float Collar	4.5	1	HES	4622	Retainer						SSR plug set							
Insert Float											Plug Container	4.5	1	HES				
Stage Tool											Centralizers							
Miscellaneous Materials																		
Gelling Agt			Conc		Surfactant		Conc		Acid Type		Qty		Conc	%				
Treatment Fld			Conc		Inhibitor		Conc		Sand Type		Size		Qty					
Fluid Data																		
Stage/Plug #: 1																		
Fluid #	Stage Type	Fluid Name			Qty	Qty uom	Mixing Density lbm/gal	Yield ft3/sk	Mix Fluid Gal/sk	Rate bbl/min	Total Mix Fluid Gal/sk							
1	Tuned Spacer III	TUNED SPACER III - SBM (483826)			40.00	bbl	11.	3.41	22.38	4.0								
	35.13 gal/bbl	FRESH WATER																
	130.5 lbm/bbl	BARITE, BULK (100003681)																
2	50/50 Poz Premium	VARICEM (TM) CEMENT (452009)			565.0	sacks	12.8	1.64	7.45	6.0	7.45							
	6 lbm	KOL-SEAL, 50 LB BAG (100064232)																
	0.125 lbm	POLY-E-FLAKE (101216940)																
	7.45 Gal	FRESH WATER																
3	50/50 Poz Premium	VARICEM (TM) CEMENT (452009)			385.0	sacks	13.2	1.51	6.45	6.0	6.45							
	6 lbm	KOL-SEAL, 50 LB BAG (100064232)																
	0.125 lbm	POLY-E-FLAKE (101216940)																
	6.45 Gal	FRESH WATER																
4	2% KCl				72.00	bbl	8.43			8.0								
Calculated Values			Pressures			Volumes												
Displacement	71.7	Shut In: Instant			Lost Returns		Cement Slurry		268.5	Pad								
Top Of Cement	SURFACE	5 Min			Cement Returns		70	Actual Displacement		71.7	Treatment							
Frac Gradient		15 Min			Spacers		40	Load and Breakdown		Total Job								
Rates																		
Circulating	RIG	Mixing			6	Displacement			6	Avg. Job		6						
Cement Left In Pipe	Amount	0 ft	Reason	Shoe Joint														
Frac Ring # 1 @	ID		Frac ring # 2 @	ID		Frac Ring # 3 @	ID		Frac Ring # 4 @	ID								
The Information Stated Herein Is Correct					Customer Representative Signature													

The Road to Excellence Starts with Safety

Sold To #: 338668		Ship To #: 3097910		Quote #:		Sales Order #: 900741350	
Customer: CHEVRON - MID-CONTINENT EBIZ				Customer Rep: Geiser, Greg			
Well Name: Skinner Ridge			Well #: 589-08-BV-02			API/UWI #: 05-045-22132	
Field: SKINNER RIDGE		City (SAP): PARACHUTE		County/Parish: Garfield		State: Colorado	
Legal Description:							
Lat: N 39.622 deg. OR N 39 deg. 37 min. 18.109 secs.				Long: W 108.414 deg. OR W -109 deg. 35 min. 8.959 secs.			
Contractor: ENSIGN			Rig/Platform Name/Num: 122				
Job Purpose: Cement Production Casing						Ticket Amount:	
Well Type: Development Well			Job Type: Cement Production Casing				
Sales Person: GROFF, THEODORE			Srv Supervisor: PONDER, THOMAS			MBU ID Emp #: 427112	

Activity Description	Date/Time	Cht #	Rate bbl/min	Volume bbl		Pressure psig		Comments
				Stage	Total	Tubing	Casing	
Call Out	09/15/2013 21:00							
Crew Leave Yard	09/15/2013 23:00							PRE CONVOY SAFETY MEETING WITH CREW, ERIC CARTER, ANDREW LINN, ANDREW SCHANZ, DAN SINCLAIR, AND DALE ROMKEE
Arrive At Loc	09/16/2013 01:00							RIG WAS STILL RUNNING WIPER TRIP WHEN CREW ARRIVED ON LOCATION
Call Out	09/16/2013 06:00							SENCOD CREW CALLED OUT FOR RELIEF
Crew Leave Yard	09/16/2013 08:00							PRE CONVOY SAFETY MEETING WITH CREW, THOMAS PONDER, ANDREW BRENNECKE, JON WOLFE, DAVID CAMPBELL
Activity Description	Date/Time	Cht #	Rate bbl/min	Volume bbl		Pressure psig		Comments
				Stage	Total	Tubing	Casing	

Cementing Job Log

Arrive At Loc	09/16/2013 10:00							RIG HAD JUST FINISHED PULLING DRILL PIPE OUT OF THE HOLE WHEN THE SECOND CREW ARRIVED ON LOCATION, TD- 4692', TP- 4666', SJ- 41', WF- 9.3 PPG WATER BASED MUD, SURFACE CASING - 8 5/8" 24# K-55 SET @ 1018', PRODUCTION CASING - 4 1/2" 11.6# N-80
Comment	09/16/2013 19:00							RIG WAS HAVING PROBLEMS RUNNING CASING WITH THEIR RUN IN TOOL ON THE TOP DRIVE, RAN IN APPROX 420' OF CASING BEFORE DECIDING THAT THEY WERE EITHER GOING TO RUN A DIFFERENT CRT OR GET A DIFFERENT CASING OUT TO LOCATION, RELEASED THE CREW @ 1900
Call Out	09/17/2013 10:00							
Crew Leave Yard	09/17/2013 11:00							ALL HES PRESENT FOR PRE-CONVOY SAFETY HUDDLE
Arrive At Loc	09/17/2013 13:00							RIG WAS STILL RUNNING CASING, COSTUMER ASKED TO BE ON LOCATION AT 1400
Assessment Of Location Safety Meeting	09/18/2013 00:00							JSA COMPLETED FOR HAZARDS BEFORE SPOTTING EQUIPMENT
Rig-Up Equipment	09/18/2013 00:30							1-550 PICKUP, 1-ELITE PUMP, 1-660 CUFT BULK TRUCK, 1-1600 CUFT STORAGE BIN
Activity Description	Date/Time	Cht #	Rate bbl/min	Volume bbl		Pressure psig		Comments
				Stage	Total	Tubing	Casing	

Safety Meeting	09/18/2013 02:00							ALL HES PRESENT, RIG CREW PRESENT, RIG STARTED CIRCULATING ON BOTTOM @ 2300. WAITED ON A SUCK TRUCK TO ARRIVE ON LOCATION BEFORE STARTING JOB
Start Job	09/18/2013 02:38							FILL LINES
Test Lines	09/18/2013 02:50		0.5	0.5				PRESSURED LINES 5493, NO LEAKS IN LINES
Pump Spacer 1	09/18/2013 03:00		6	40			380.0	TUNED SPACER III
Pump Lead Cement	09/18/2013 03:08		6	165			173.0	565SKS 12.8 PPG 1.64 FT3/SK 7.45 GAL/SK
Pump Tail Cement	09/18/2013 03:40		6	103.5			495.0	385 SKS 13.2 PPG 1.52 FT3/SK 6.45 GAL/SK
Shutdown	09/18/2013 04:00							
Clean Lines	09/18/2013 04:02							WASHED UP PUMPS AND LINES TO PIT
Drop Plug	09/18/2013 04:08							PLUG DROP VERIFIED VIA TATTLE TELL BY CUSTOMER REP
Pump Displacement	09/18/2013 04:10		8	61.7			1197. 0	FRESH WATER, 2%KCL
Slow Rate	09/18/2013 04:20		2	10	71.7		1009. 0	GOOD RETURNS THROUGH OUT JOB, CIRCULATED 70 BBL CEMENT BACK TO SURFACE
Bump Plug	09/18/2013 04:24						1537. 0	PLUG BUMPED. CUSTOMER USED 120 LBS SUGAR
Check Floats	09/18/2013 04:31							FLOATS HELD, .5 BBL BACK TO THE DISPLACEMENT TANKS
End Job	09/18/2013 04:35							THANK YOU FOR CHOOSING HALLIBURTON, THOMAS PONDER AND CREW

HALLIBURTON

iCem[®] Service

CHEVRON - MID-CONTINENT EBIZ

For: GREG GEISER

Date: Wednesday, September 18, 2013

SKR 598-08-BV-02

Case 1

Sincerely,

Legal Notice

Warning Disclaimer

Although the information contained in this report is based on sound engineering practices, the copyright owner(s) does (do) not accept any responsibility whatsoever, in negligence or otherwise, for any loss or damage arising from the possession or use of the report whether in terms of correctness or otherwise. The application, therefore, by the user of this report or any part thereof, is solely at the user's own risk.

Limitations of Liability

Except as expressly set forth herein, there are no representations or warranties by Halliburton, express or implied, including implied warranties of merchantability and/or fitness for a particular purpose. In no event will Halliburton or its suppliers be liable for consequential, incidental, special, punitive or exemplary damages (including, without limitation, loss of data, profits, use of hardware, or software). Customer accepts full responsibility for any investment made based on results from the Software. Any interpretations, analyses or modeling of any data, including, but not limited to Customer data, and any recommendation or decisions based upon such interpretations, analyses or modeling are opinions based upon inferences from measurements and empirical relationships and assumptions, which inferences and assumptions are not infallible, and with respect to which professional may differ. Accordingly, Halliburton cannot and does not warrant the accuracy, correctness or completeness of any such interpretation, recommendation, modeling or other products of the Software Product. As such, any interpretation, recommendation or modeling resulting from the Software for the purpose of any drilling, well treatment, production or financial decision will be at the sole risk of Customer. Under no circumstances will Halliburton or its suppliers be liable for any damages.

Table of Contents

To Generate a Table of Contents, right click here. Click "Update Field." If prompted, select "Entire Table."

1.0 Real-Time Job Summary

1.1 Stage Summary - Liquid Volume, Density, & Design Shutdown

1.2 Stage Summary - Pump Pressure & ECD

1.3 Stage Summary - Pump Rate & Nitrogen Rate

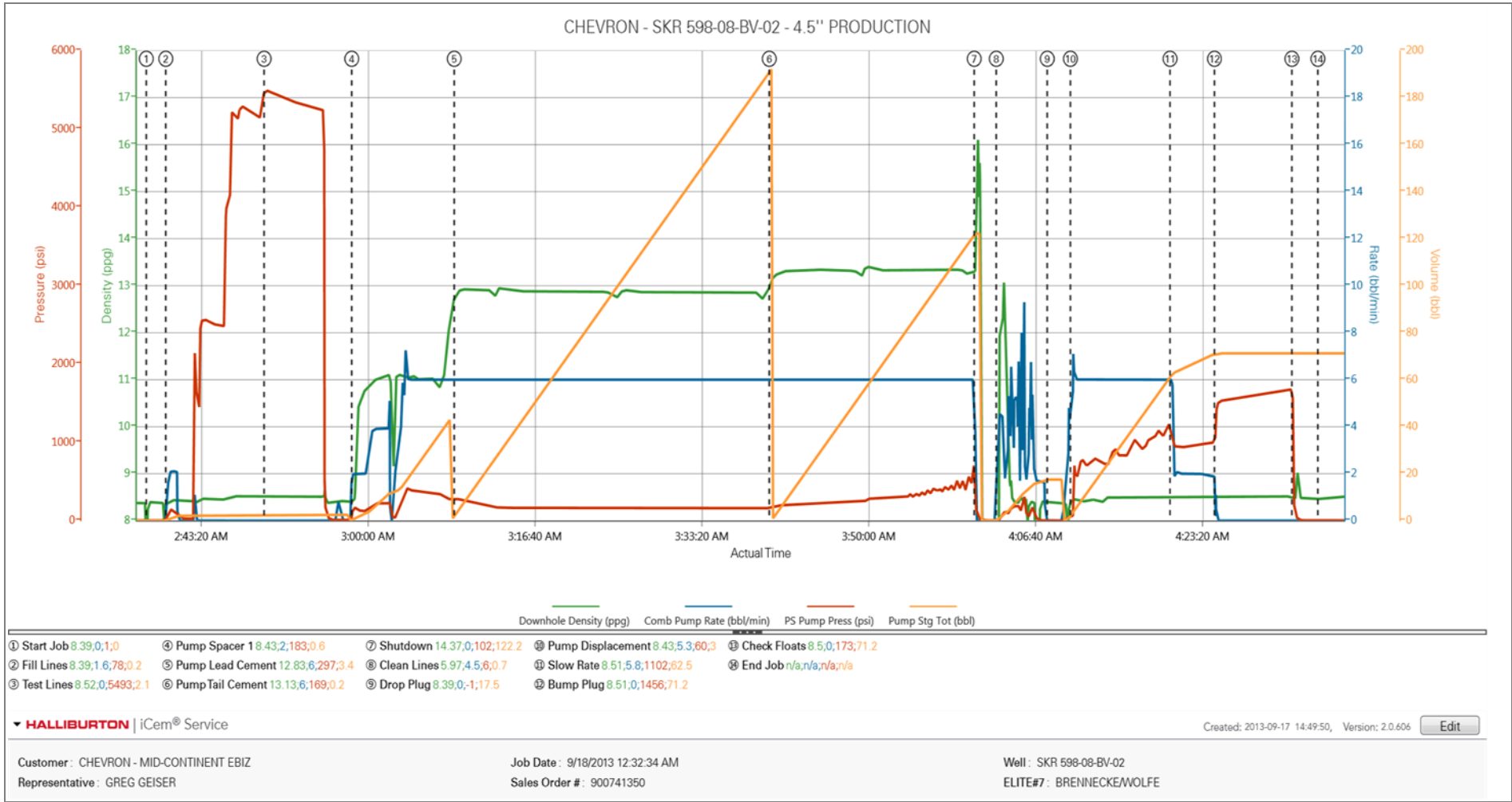
1.4 Shutdown Summary

1.5 Job Event Log

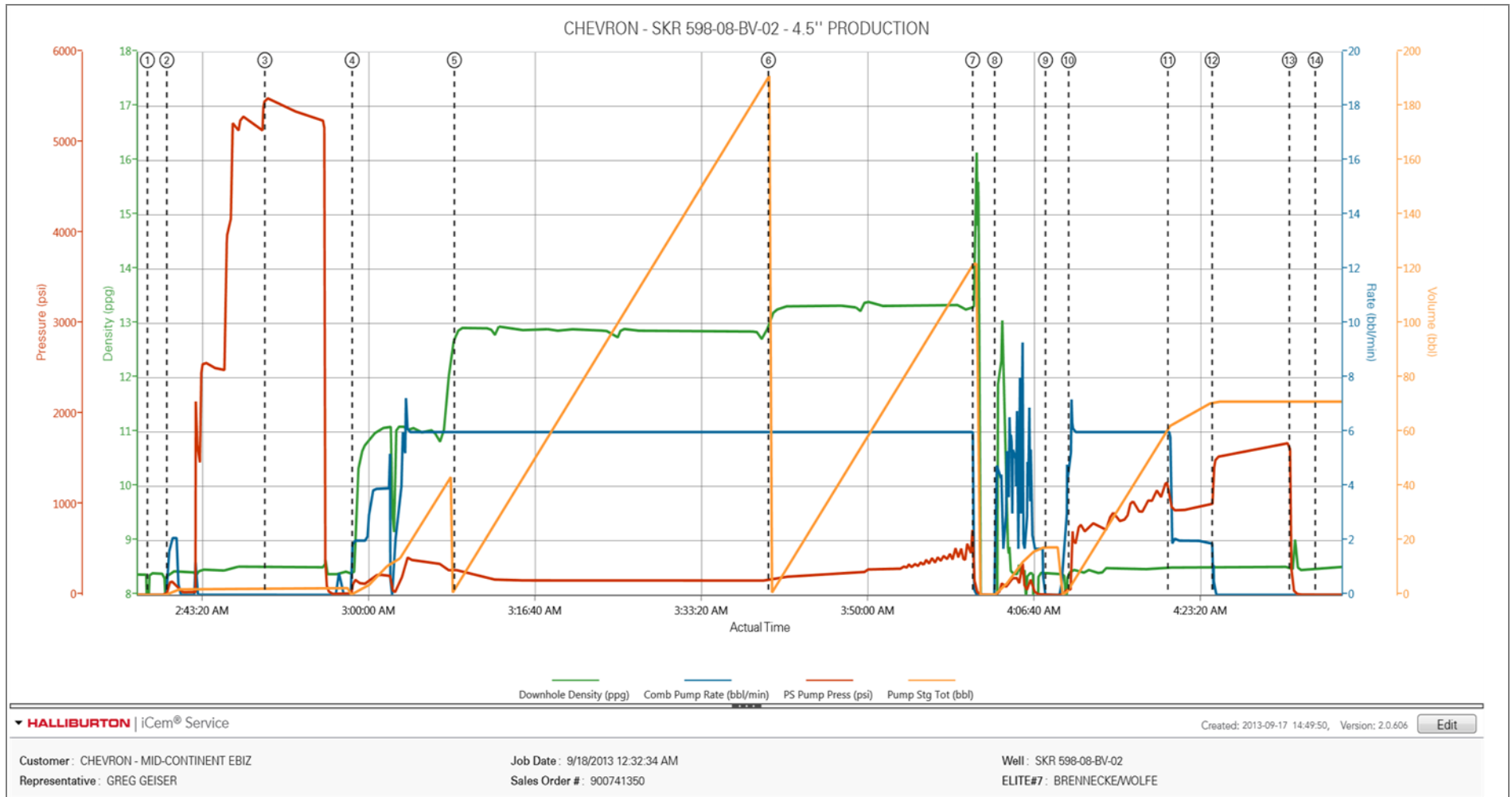
Time	Description	Graph Label	Downhole Density (ppg)	Combined Pump Rate (bbl/min)	Pass-Side Pump Pressure (psi)	Pump Stage Total (bbl)	Comment
02:38:03	Start Job	Start Job	8.39	0.00	1.00	0.00	
02:40:00	Other	Fill Lines	8.39	1.60	78.00	0.20	
02:49:49	Test Lines	Test Lines	8.52	0.00	5493.00	2.10	
02:58:34	Pump Spacer 1	Pump Spacer 1	8.43	2.00	183.00	0.60	
03:08:48	Pump Lead Cement	Pump Lead Cement	12.83	6.00	298.00	3.30	
03:40:15	Pump Tail Cement	Pump Tail Cement	13.12	6.00	166.00	0.10	
04:00:43	Shutdown	Shutdown	14.37	0.00	102.00	122.20	
04:02:55	Clean Lines	Clean Lines	5.97	4.50	6.00	0.70	
04:08:01	Drop Plug	Drop Plug	8.39	0.00	-1.00	17.50	
04:10:20	Pump Displacement	Pump Displacement	8.43	5.30	60.00	3.00	
04:20:16	Slow Rate	Slow Rate	8.51	5.80	1102.00	62.50	
04:24:43	Bump Plug	Bump Plug	8.51	0.00	1456.00	71.20	
04:32:26	Other	Check Floats	8.50	0.00	173.00	71.20	
04:35:02	End Job	End Job					

2.0 Attachments

2.1 CHART WITH EVENTS.png

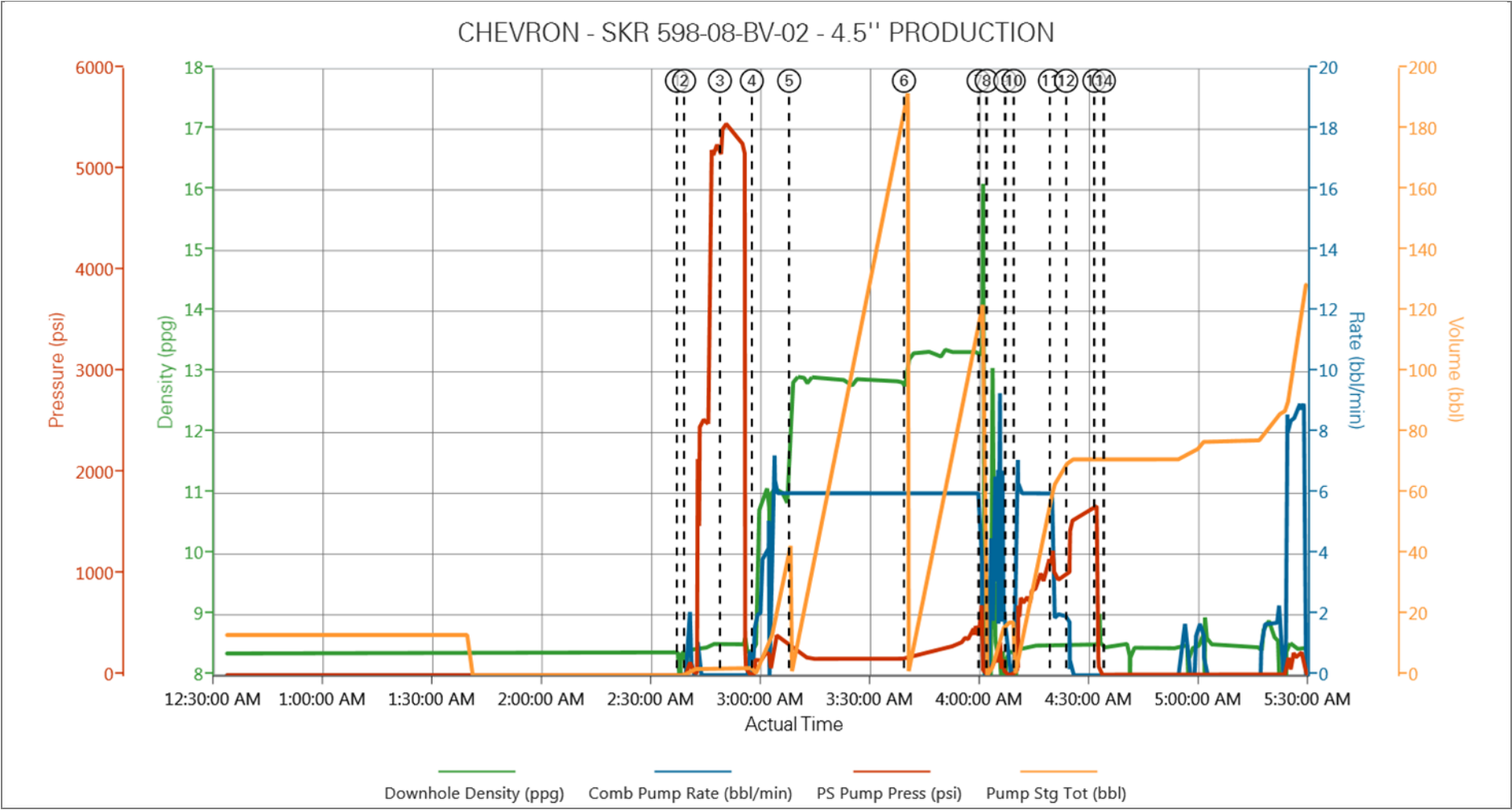


2.2 CHART WITH OUT EVENTS.png



3.0 Custom Graphs

3.1 Custom Graph



4.0 Appendix

4.1 One-Minutes Real-Time Data Listing
